



HELCON
STEEL CORPORATION

COMPANY PROFILE

" Our company holds premium goodwill in steel industries & profiles cutting field with sound knowledge since long aspect with to maintain our motto for quality & quantity at the competitive rates.

OUR S.S. PRODUCT RANGE

- Stainless Steel, Sheet, Plate & Coil.
- Specialist of Heavy & Wider Stainless Steel Plate.
- Round Pipe, Tubes & Pipe Fittings.
- Square & Rectangular Pipe (Hollow sections)
- Round Bar, Flat, Channel, Angel, Chequered Sheet.
- High Nickel Alloys, Aluminum Sheets, Pipe, Rod, Square.

OUR M.S. PRODUCT RANGE

- Mild Steel Profile Cutting, Plasma Cutting & Laser Cutting.
- Mild Steel Plate, Sheet & Coil.
- C-45, EN-8,9,19,24 & All Size.
- Specialist of Heavy & Wider Mild Steel Plate.
- Square & Rectangular Pipe (Hollow Sections).
- Round Bar, Polish Bar, Angel, Channel, Beam & Flat.
- Chequered Plate, T.M.T. Bar, G.I. Sheet, Color Coated Sheet & Coil.
- Alloy Steel, Ferrous & Non Ferrous Material & All Industrial Raw Material.

OUR MISSION

"Profitable growth through superior customer service, innovation, quality and commitment."

OUR VISION

"To grow continuously and become the partner of choice for customers seeking excellence in the manufacturing of steel products."

OUR VALUES

" Unity is Strength of our progress, Your Co-ordination is a part of our developing business. To some we are glorious past, to others we are the glowing present, we are many we are one."

Available Size For Pipes

Seamless Pipes - 1/8" to 40" Welded Pipes - 1/8" to 40"

Available Grade For Pipes

- ~ Carbon Steel Pipes - ASTM A 106 Gr. A, B & C & A53 with IBR & Non IBR
- ~ Mild Steel ERW Pipes - IS 1239 & 3589 Gr 330, 410
- ~ Alloy Steel - ASTM A 335 GR P1, P5, P9, P11, P12, P22, etc.
- ~ Low Temperature - ASTM A 333 Grade 1,3 & 6 etc.
- ~ Stainless Steel Pipes - ASTM A 312 TP 304, 304L, 321, 304, 310S, 316, 316L, 316H, 410, 420 etc.
- ~ Stainless Steel Sheets & Plates - A 240 TP 304, 304L, 316, 316L, 316H, 321, 310, 310S, 410, 420 etc.
- ~ Carbon Steel, Alloy Steel & BQ Plates - IS 2062 Gr-A, B & C, SA 387
- ~ Gr. 11,12, 22 & 516, Gr. 55, 60, 70 etc.

Available Items For Fittings

Elbows, Bends, Stubends, Tees, Reducers, Caps, Flanges, Nut, Bolt etc.

Available Size For Fittings

Seamless Fittings - 1/8" to 20" Welded Fittings 1/8" to 40"

Available Grade For Fittings

- ~ Carbon Steel - ASTM A234 GR. WPB, WPC with IBR & Non IBR
- ~ Alloy Steel - ASTM A234 GR. P1, P2, P5, P9, P11, P12, P22 etc.
- ~ Low Temperature - ASTM A420 WPL1, WPL3, WPL6 etc.
- ~ Stainless Steel B/W - ASTM A403 Gr, WP 304, 304L, 321, 309, 310, 316, 316L, 316H etc.
- ~ Stainless Steel S/W - ASTM A182F 304, 304L, 316, 316L, 321, 310 etc.

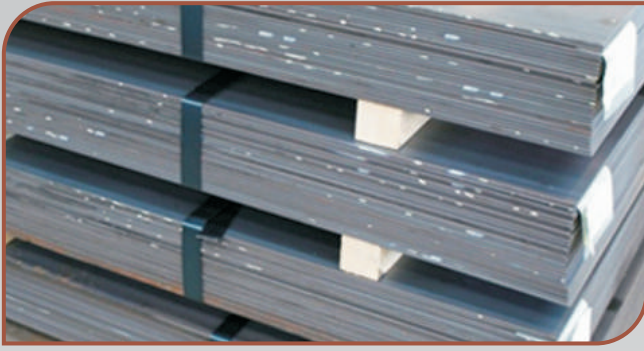
Available Items in Non Ferrous

Copper, Brass, Gum Metal P.B. Aluminum, Zinc Lead, Monel, Inconel, Titanium & Hastalloys, Cupro Nickle, Pipes, Sheets, Plates, Rods, Strips etc.

All requirements under one roof. Excellent, dimensional, compatibility, Reliable, trusted and proven quality. Large quantities available in stock & can be supplied under any third party inspection at a very competitive price. If there any formalities for registration, please send us necessary forms.



OUR STAINLESS STEEL PRODUCTS



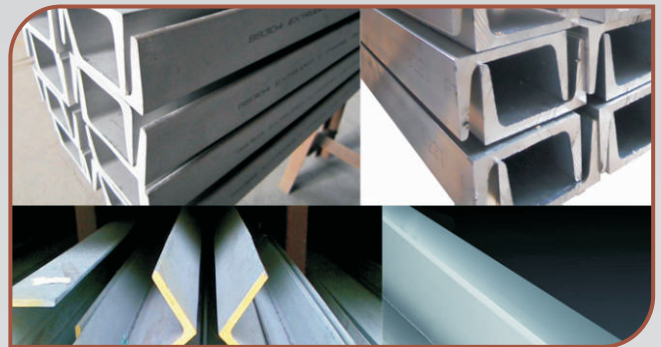
S.S. SHEET



S.S. PLATE



S.S. COIL



S.S. ANGLE & CHANNEL



S.S. FLAT



S.S. BAR



S.S. TUBE

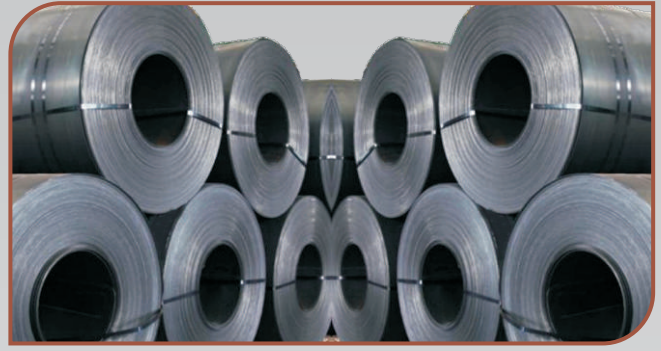


S.S. PIPE

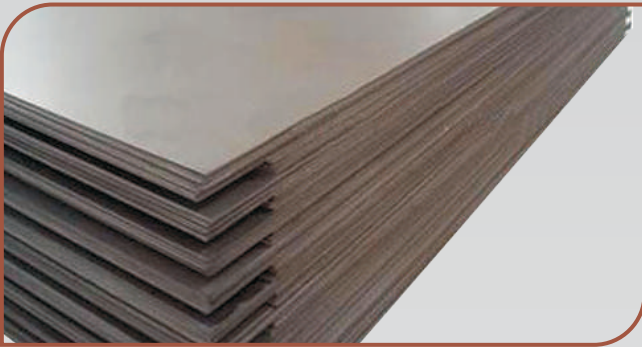
OUR MILD STEEL PRODUCTS



M.S. PLATE



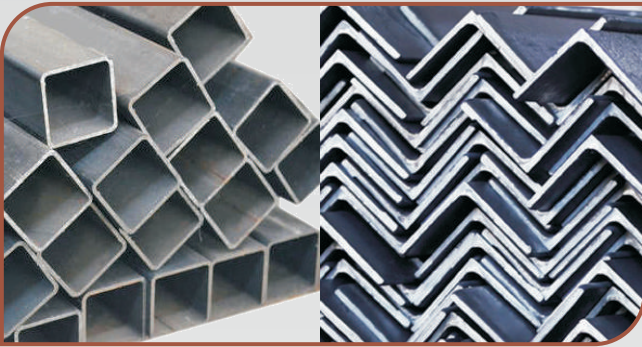
M.S. COIL



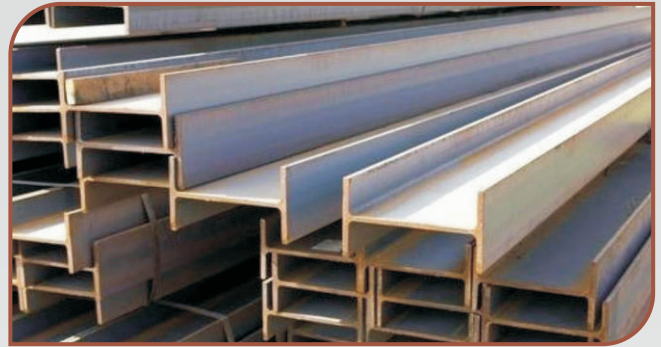
M.S. SHEET



M.S. FLAT



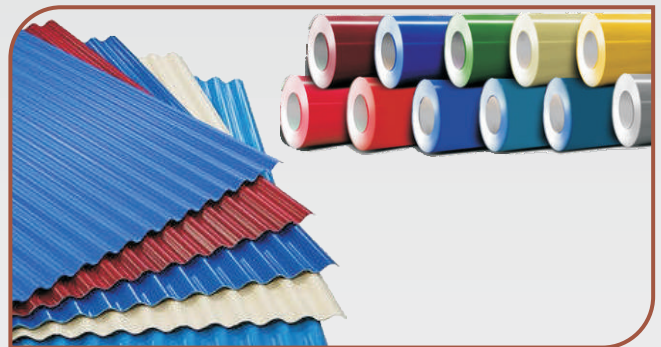
M.S. ANGLE & CHANNEL



M.S. BEAM

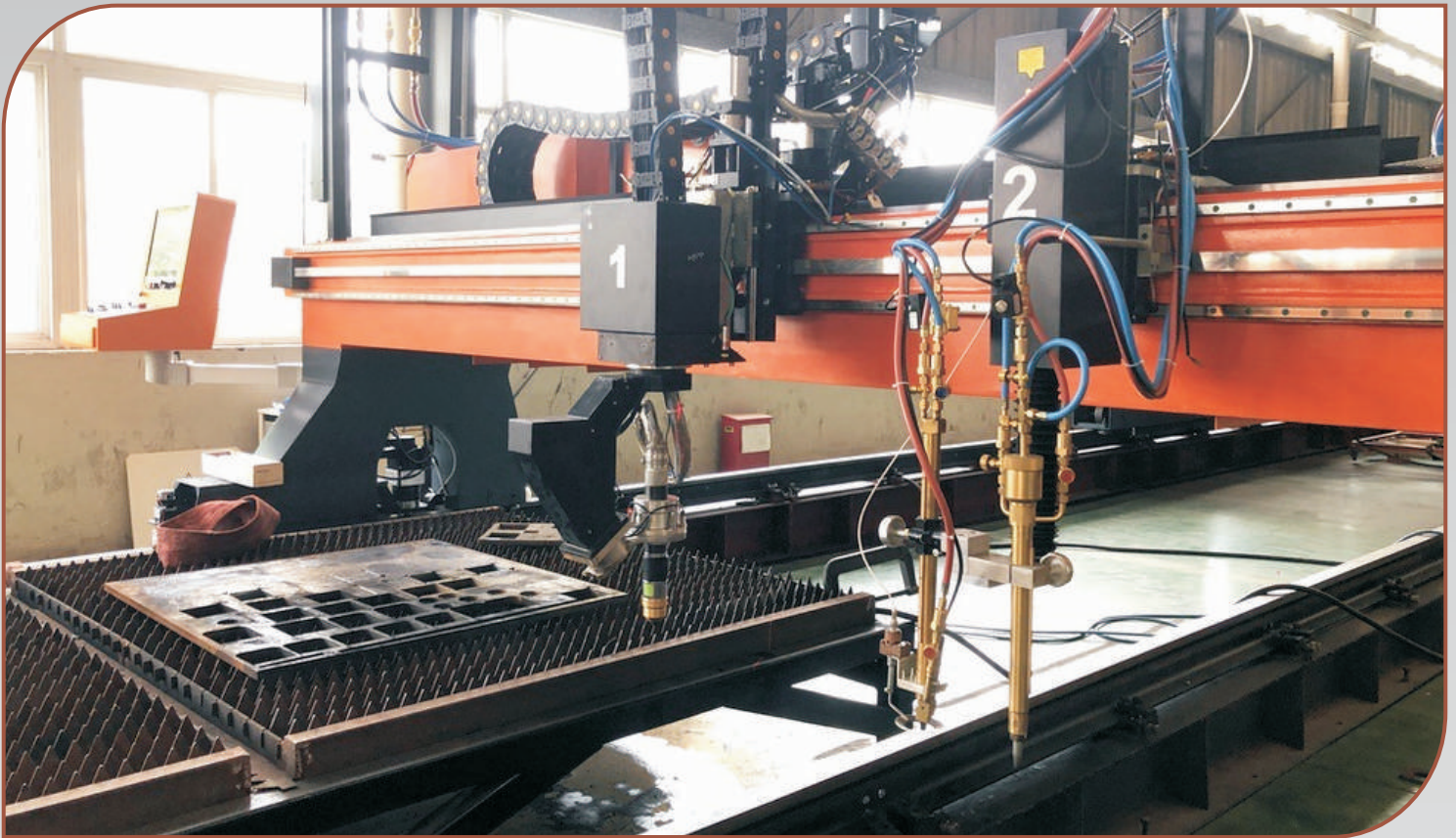


M.S. ROUND BAR / M.S.TMT BAR



GALVANIZED COLOR COATED SHEET/COIL

OUR PROFILE CUTTING PRODUCTS



OXY - FUEL / PLASMA CUTTING



M.S. CIRCLE



M.S. SQUARE



M.S. TEMPLATE



M.S. SLAB

Stainless Steel Fitting Items





DAIRY PLANT



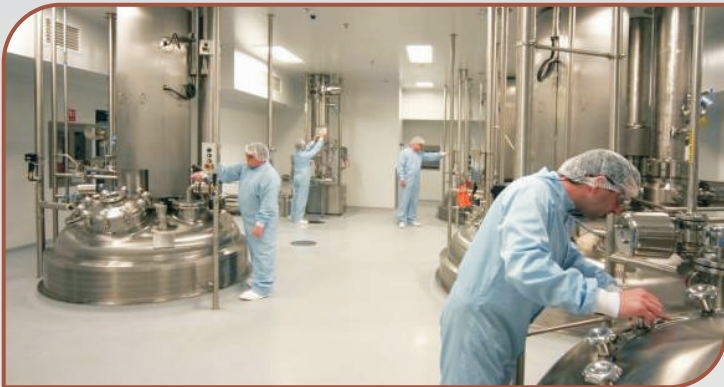
POWER PLANT



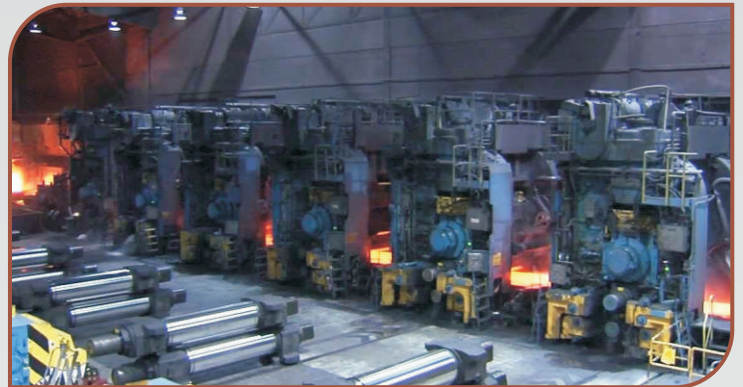
CERAMIC PLANT



STEEL PLANT



PHARMA PLANT



ROLLING MILL



HELCON STEEL CORPORATION

Office : Plot No. 47, Iscon, Pratappura Road, Chhatral,

Ta. Kalol, Dist. Gandhinagar - 382729 (N. Gujarat)

M. : +91 9998404721, +91 9898404721

E-mail : helconsteelcorp@gmail.com

Website : www.helconsteel.com



ISO 9001:2015 Certified Company