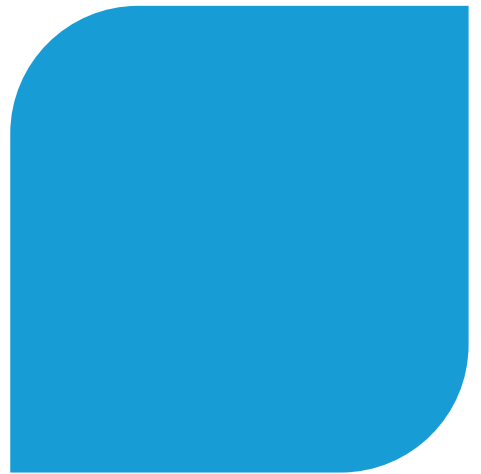


MIPATEX

DESIGNED FOR ADVANCED FARMING

MULCH FILM

Prevent Weeds, Protecting Soil & Crops



MIPATEX MULCH FILM

Mulch film, also known as mulching sheet or agriculture film, is a plastic sheet that covers the soil to limit moisture losses, weed growth and improves crop yield. It decreases water used in irrigation, prevents soil compaction, protects against erosion, and improves soil structure. Mulching film regulates the soil temperature evenly, insulating temperature-sensitive plants during the cooler months. Moreover, mulching has other advantages, such as transferring temperature to soil and plant roots and maximum fertilizers utilization and enhancing the soil's nutrient profile.

MIPATEX plastic mulch films are made from superior quality raw material. Our mulching films are suitable for almost every crop, withstand against any weather conditions, do not allow any light transfer, and are durable to secure crop yields and quality.

Features:



Weed Control



UV stabilized



Easy to Use



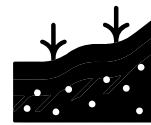
Protect Soil
& Crop



Repels Pests



Earlier Crop
Growth



Improves Soil
Structure



Water
Conservation

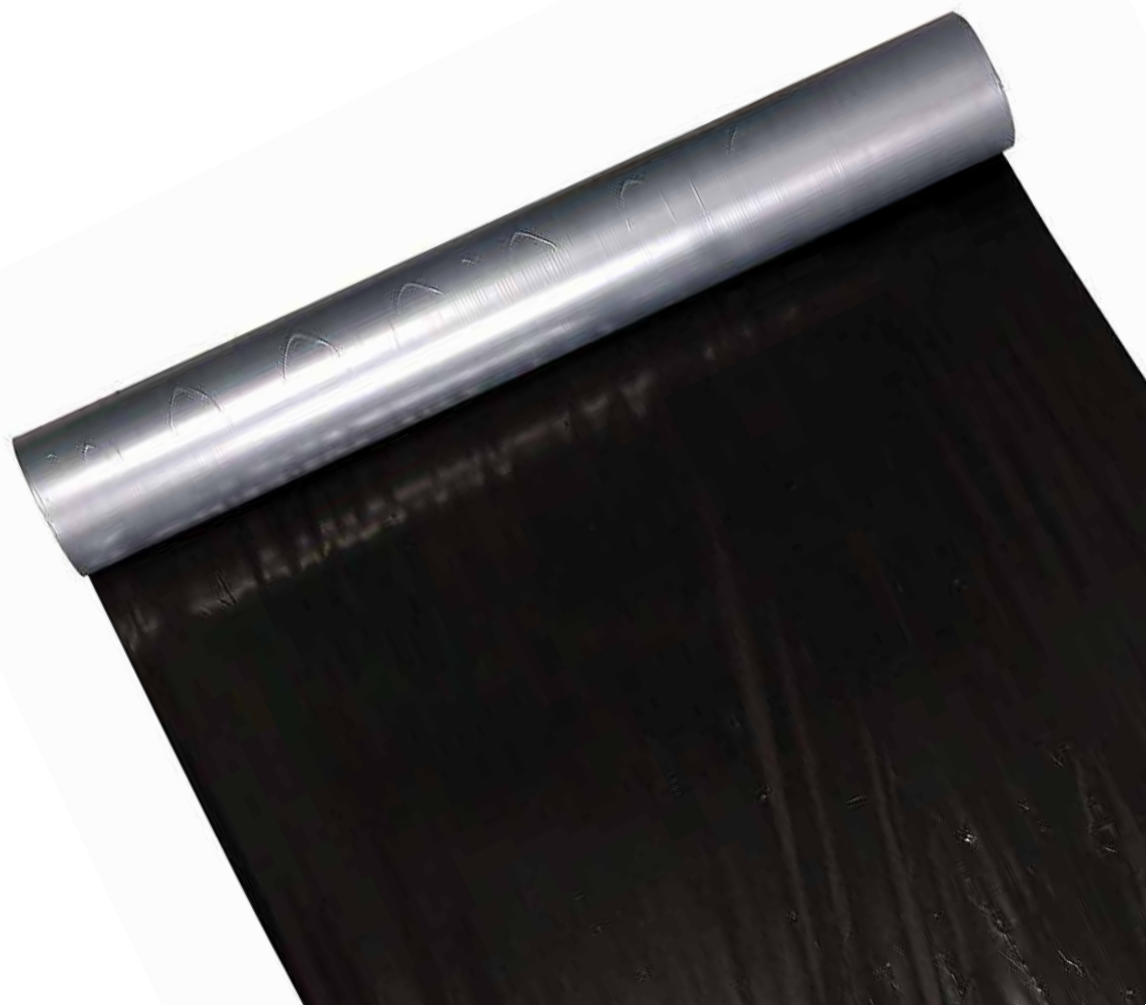


Durable



Mulch film saves farmers time, effort, and money along with these main benefits:

- **Minimize the growth of unwanted weeds and plants.**
- **It prevents water evaporation from the soil, helps retain moisture, and minimizes water usage.**
- **Reduce the temperature fluctuations in the soil, regulate soil temperature between day and night.**
- **Reflective silver/black mulch acts as an insect repellent; it helps in keeping insects away.**
- **Protect soil from temperature, rain, and other weather conditions and help the soil maintain good health.**
- **Prevents direct contact of fruit and vegetables with the soil, reducing fruit rot.**



MULCH FILM BENEFITS:

MIPATEX offers a wide variety of mulch films for different growing conditions.

Silver/Black Mulch: Suitable for almost every crop, silver-black mulch is the most popular mulch among farmers. It blocks sunlight from passing below mulch to prevent weed growth. The metallic silver outer surface reflects sunlight, acts as an insect repellent and helps decrease pesticides. This mulch reflects 27% of the light to the fruits and plants; it improves color development.

White/Black Mulch: Highly recommended for crops that require low temperature at the root system. Its outer white surface reflects 60% of sunlight and provides good insulation to the soil from temperature. The black inner surface blocks sunlight from reaching the soil and prevent weed growth.

Transparent (Clear Mulch): Transparent mulch film is ideal for the winter season as it allows sunlight to increase soil temperature and boost root development and early harvest. The disadvantage of clear mulch is that it does not prevent weed growth.

Black Mulch: Black mulch film is ideal for cold weather. It retains maximum sunrays received during the day and transmits them to the soil to increase its ambient temperature and provide an optimized environment for the best root stock growth. Also, eliminate weed growth by preventing light transmission to the soil.

Color Mulch: Color mulch film is a midway solution for an application that requires advanced weeds controls and moderate soil heat up for optimized roots growth. Color mulch also attracts harmful insects that can attack plant leaves. These films are available in red, brown, green, yellow, and blue.

Biodegradable Mulch: MIPATEX biodegradable mulch film contains biobased content, which works as traditional plastic mulch and reduces environmental impact. In addition, the farmer does not have to collect and dispose of the mulch films after harvest.

TECHNICAL DATA SHEET

MULCH FILM **MMF-30**

MIPATEX Mulching Film is made of High Strength LLDPE and LDPE Material. It's a multilayer PE Film with UV stabilizer and additives to improve the life of the soil. Mulching is a technique of adding a layer to the surface of soil around the plant with plastic film to conserve the soil's moisture that suppresses weeds growth, regulate soil temperature and prevent water loss through evaporation

PROPERTY	OBTAINED VALUE	SPECIFIED REQUIREMENT
Density, g/cc	0.928	0.908 to 0.930 g/cm ³ at 27°C (0.910 to 0.932 g/cm ³ at 23°C)
Melt Flow Index, g/10 min	0.39	Between 0.1 to 2.5 g/10 min.
Thickness, microns	31	30
Width, mm Tolerance, %	1220 0.0	(-)0 (+)5
Tensile Strength, kgf/cm ² a)Length b)Cross	201.1 206.1	200 (min.)
Elongation at break, % a)Length b)Cross	903.9 886.2	400 (min.)
Coefficient of Friction	0.34	0.22 to 0.35
Elmendorf Tear Strength, g a)Length b)Cross	100 140	(min) 2g/micron=60 (min) 4g/micron=120
Opacity, %	99.5 (-)0.5	Shall be 100 percent Tolerance (-1%)
Carbon black, percent, %	2.21	2.0 to 3.0
Carbon black dispersion	Satisfactory	Shall be satisfactory

*The test data is based on an average taken over several production runs and should not be considered or interpreted as minimum or maximum values. Values are typical data and not limiting specifications.

The information contained herein is accurate and reliable to the best of our knowledge and provided for reference purposes only.



MIPA INDUSTRIES

S No. 28/1/5, Kondhwa Road,
Near Hotel Garwa Hills, Yewalewadi Pisoli,
Pune, Maharashtra, 411048

Phone No. +91-9923126429 / 8605512109

Toll free : 1800 419 1393

E-mail : info@mipaindustries.com

www.mipaindustries.com

Order Online at : www.mipatex.in



For more information please scan **QR code**

