

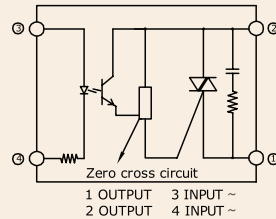
# Series: 001 J/K

**Single Phase SSR (240VAC)  
10~60Amps**

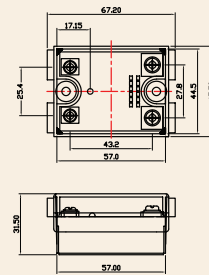
INPUT : AC Control  
OUTPUT : Triac



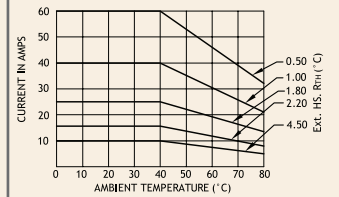
Schematic



Mechanical Drawing



Derating Curve



### Salient Features

- Opto Isolation 4000 VAC • Zero Voltage Turn On/Random Turn On • TTL/CMOS Compatible (Sink mode)
- Output: NO/NC Configuration • Safety Cover Provision • Built-in Snubber • Panel Mountable/DIN Mountable
- Transient Protection Available (Optional)

ELECTRICAL SPECIFICATION @ TA = 25°C			NOTE: FOR RANDOM T-ON SSR, ADD LETTER 'K' IN PLACE OF 'J'				
PARAMETER	SYMBOL	UNIT	PRODUCT PART NUMBERS				
			001 JAA 331028	001 JAA 331628	001 JAA 332528	001 JAA 334028	001 JAA 336028

### INPUT

PARAMETER	SYMBOL	UNIT	001 JAA 331028	001 JAA 331628	001 JAA 332528	001 JAA 334028	001 JAA 336028
Control Voltage Range		Vac	90~280	90~280	90~280	90~280	90~280
Control Current Range		mA	9~25	9~25	9~25	9~25	9~25
Pick-up Voltage		Vac	90	90	90	90	90
Drop-out Voltage		Vac	45	45	45	45	45
Input Resistance		KOhms	11	11	11	11	11

### OUTPUT

PARAMETER	SYMBOL	UNIT	001 JAA 331028	001 JAA 331628	001 JAA 332528	001 JAA 334028	001 JAA 336028
RMS on state Current	IT	A	10	16	25	40	60
Mains Control Voltage	Vrms	Vac	24-330	24-330	24-330	24-330	24-330
Rep Peak Off state Voltage	Vdrm	Vpk	600	600	600	600	600
Peak one cycle surge Current (Non-Rep)	ITSM	A	100	160	250	400	750
On state Voltage Drop	VTM	Vac	1.6	1.6	1.6	1.6	1.6
Off state Leakage current	ldrm	mA	5	5	5	5	5
Zero T-On Voltage		Vpk	25	25	25	25	25
Critical Rate of Rise Off state Voltage	dv/dt	V/μs	400	400	500	500	500
Holding Current	IH	mA	50	50	75	80	100
Fusing Current	I²T	A²s	55	144	340	880	2800
Thermal Resistance	RTH	°C/W	2.4	2.1	0.9	0.6	0.6
Turn-On	T-On	ms	40	40	40	40	40
Turn-Off	T-Off	ms	80	80	80	80	80
Frequency Range	f	Hz	47~63	47~63	47~63	47~63	47~63
Operating Temp	T Oper	°C	-30 to +80	-30 to +80	-30 to +80	-30 to +80	-30 to +80

