

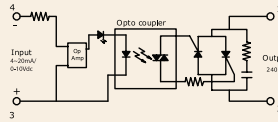
# Series: 012 PAC

**Phase Angle Control SSR (240VAC)  
10~50Amps**

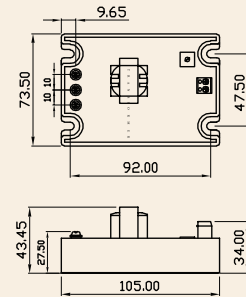
INPUT : 4-20 mA /0-10 Vdc  
OUTPUT : SCR



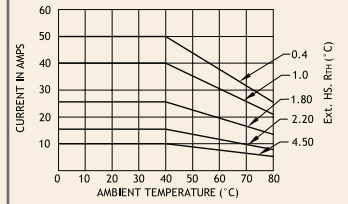
Schematic



Mechanical Drawing



Derating Curve



## Salient Features

- Opto Isolation 2500 VAC • Input Control 0~10 Vdc or 4~20m Amps • Built in Power Supply • Built - In Snubber
- Panel Mountable

ELECTRICAL SPECIFICATION @ TA = 25°C			PRODUCT PART NUMBERS				
PARAMETER	SYMBOL	UNIT	012 PAC 241010/42	012 PAC 241610/42	012 PAC 242510/42	012 PAC 244010/42	012 PAC 245010/42
<b>INPUT</b>							
Control Voltage Range		Vdc	0-10	0-10	0-10	0-10	0-10
Control Current Range		mA	4~20	4~20	4~20	4~20	4~20
<b>OUTPUT</b>							
RMS on state Current	$I_T$	A	10	16	25	40	50
Mains Control Voltage	$V_{rms}$	Vac	24-240	24-240	24-240	24-240	24-240
Rep Peak Off state Voltage	$V_{drm}$	Vpk	600	600	600	600	600
Peak one cycle surge Current (Non-Rep)	$I_{TSM}$	A	100	160	250	400	800
On state Voltage Drop	$V_{TM}$	Vac	1.6	1.6	1.6	1.6	1.6
Off state Leakage current	$I_{drm}$	mA	5	5	5	5	5
Critical Rate of Rise Off state Voltage	$dv/dt$	V/ $\mu$ s	400	400	500	500	475
Holding Current	$I_H$	mA	50	50	75	80	80
Fusing Current	$I^2T$	A <sup>2</sup> s	55	144	340	880	3745
Thermal Resistance	$R_{TH}$	°C/W	2.4	2.1	0.9	0.6	0.86
Turn-On	T-On	ms	1.0	1.0	1.0	1.0	1.0
Turn-Off	T-Off	ms	10	10	10	10	10
Frequency Range	f	Hz	47~63	47~63	47~63	47~63	47~63
Operating Temp	T Oper	°C	-30 to +80	-30 to +80	-30 to +80	-30 to +80	-30 to +80

