

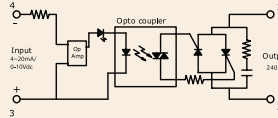
# Series: 012 PAC

**Phase Angle Control SSR (240VAC)  
75~205Amps**

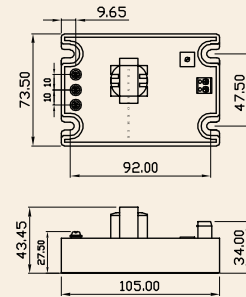
INPUT : 4~20 mA/0-10 Vdc  
OUTPUT : SCR



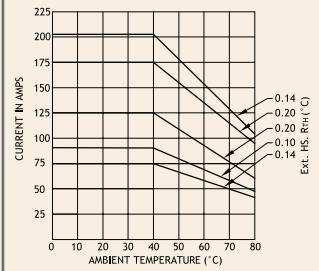
Schematic



Mechanical Drawing



Derating Curve



## Salient Features

- Opto Isolation 2500 VAC • Input Control 0~10 Vdc or 4~20m Amps • Built in Power Supply • Built - In Snubber
- Panel Mountable

ELECTRICAL SPECIFICATION @ TA = 25°C			PRODUCT PART NUMBERS				
PARAMETER	SYMBOL	UNIT	012 PAC 247510/42	012 PAC 249010/42	012 PAC 2412510/42	012 PAC 2417510/42	012 PAC 2420510/42
<b>INPUT</b>							
Control Voltage Range		Vdc	0-10	0-10	0-10	0-10	0-10
Control Current Range		mA	4~20	4~20	4~20	4~20	4~20
<b>OUTPUT</b>							
RMS on state Current	$I_T$	A	75	90	125	175	205
Mains Control Voltage	$V_{rms}$	Vac	24-240	24-240	24-240	24-240	24-240
Rep Peak Off state Voltage	$V_{drm}$	Vpk	600	600	600	600	600
Peak one cycle surge Current (Non-Rep)	$I_{TSM}$	A	870	870	1000	1350	2000
On state Voltage Drop	$V_{TM}$	Vac	1.6	1.6	1.6	1.6	1.6
Off state Leakage current	$I_{drm}$	mA	5	5	5	5	5
Critical Rate of Rise Off state Voltage	$dv/dt$	V/ $\mu$ s	1000	1000	1000	1000	1000
Holding Current	$I_H$	mA	100	100	200	200	200
Fusing Current	$I^2T$	A <sup>2</sup> s	3780	3780	5000	9100	20000
Thermal Resistance	$R_{TH}$	°C/W	0.8	0.8	0.7	0.5	0.26
Turn-On	T-On	ms	1.0	1.0	1.0	1.0	1.0
Turn-Off	T-Off	ms	10	10	10	10	10
Frequency Range	f	Hz	47~63	47~63	47~63	47~63	47~63
Operating Temp	T Oper	°C	-30 to +80	-30 to +80	-30 to +80	-30 to +80	-30 to +80

