

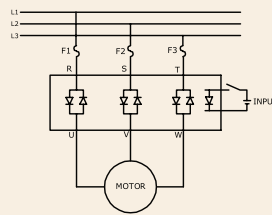
Series: 012 SJ/K

**Three Phase SSR (480~660VAC)
50~125Amps**

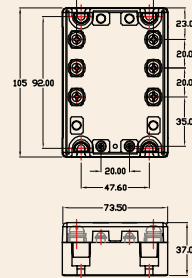
INPUT : DC Control
OUTPUT : SCR



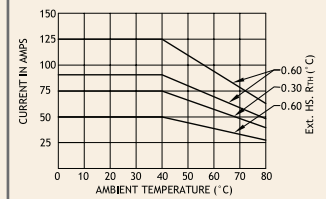
Schematic



Mechanical Drawing



Derating Curve



Salient Features

- Opto Isolation 4000 VAC • Input Control DC • Zero Voltage Turn On/Random Turn On • Load Current 3x50A/75A/90A/125A
- Reverse Polarity Protection for DC Input Control • Universal Input (optional) • Safety Cover Provision to Meet IP 20 Protection

ELECTRICAL SPECIFICATION @ TA = 25°C			NOTE: FOR RANDOM T-ON SSR, ADD LETTER 'K' IN PLACE OF 'J'			
PARAMETER	SYMBOL	UNIT	PRODUCT PART NUMBERS			
			012 SJDA 485000	012 SJDA 487500	012 SJDA 489000	012 SJDA 4812500
INPUT						
Control Voltage Range		Vdc	4-32	4-32	4-32	4-32
Control Current Range		mA	50	50	50	50
Pick-up Voltage		Vdc	4.0	4.0	4.0	4.0
Drop-out Voltage		Vdc	1.0	1.0	1.0	1.0
Input Resistance		KOhms	0.65	0.65	0.65	0.65
OUTPUT						
RMS on state Current	I _T	A	50	75	90	125
Mains Control Voltage	V _{rms}	Vac	48-480	48-480	48-480	48-480
Peak Off state Voltage	V _{drm}	Vpk	800-1200	800-1200	800-1200	800-1200
Peak one cycle surge Current (Non-Rep)	I _{TSM}	A	520	750	870	1000
On state Voltage Drop	V _{TM}	Vac	1.6	1.6	1.6	1.6
Off state Leakage current	I _{drm}	mA	5	5	5	5
Zero T-On Voltage		Vpk	25	25	25	25
Critical Rate of Rise Off State Voltage	dv/dt	V/μs	1000	1000	1000	1000
Holding Current	I _H	mA	150	200	100	200
Fusing Current	I ² T	A ² s	1350	2812	3780	5000
Thermal Resistance	R _{TH}	°C/W	1.0	0.6	0.8	0.7
Turn-On [Zero/Random]	T-On	ms	10/0.1	10/0.1	10/0.1	10/0.1
Turn-Off [Zero/Random]	T-Off	ms	10	10	10	10
Frequency Range	f	Hz	47~63	47~63	47~63	47~63
Operating Temp	T Oper	°C	-30 to +80	-30 to +80	-30 to +80	-30 to +80

For 1200 Vpk add "60" in place of "48" (eg.: 012 SJDA 609000).

