

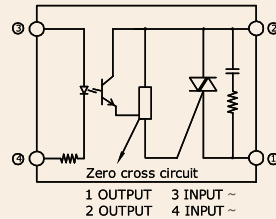
Series: 001 J/K

**Single Phase SSR (480VAC)
10~60Amps**

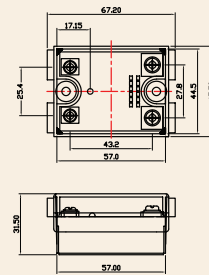
INPUT : AC Control
OUTPUT : Triac Output



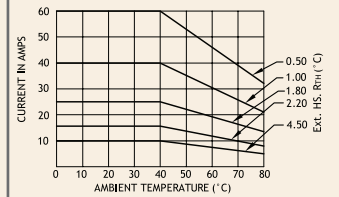
Schematic



Mechanical Drawing



Derating Curve



Salient Features

- Opto Isolation 4000 VAC • Zero Voltage Turn On/Random Turn On • TTL/CMOS Compatible (Sink mode)
- Output: NO/NC Configuration • Safety Cover Provision • Built-in Snubber • Panel Mountable/DIN Mountable
- Transient Protection Available (Optional)

ELECTRICAL SPECIFICATION @ TA = 25°C			NOTE: FOR RANDOM T-ON SSR, ADD LETTER 'K' IN PLACE OF 'J'				
PARAMETER	SYMBOL	UNIT	PRODUCT PART NUMBERS				
			001 JAA 481028	001 JAA 481628	001 JAA 482528	001 JAA 484028	001 JAA 486028

INPUT

PARAMETER	SYMBOL	UNIT	001 JAA 481028	001 JAA 481628	001 JAA 482528	001 JAA 484028	001 JAA 486028
Control Voltage Range		Vac	90-280	90-280	90-280	90-280	90-280
Control Current Range		mA	9-25	9-25	9-25	9-25	9-25
Pick-up Voltage		Vac	90	90	90	90	90
Drop-out Voltage		Vac	45	45	45	45	45
Input Resistance		KOhms	11	11	11	11	11

OUTPUT

PARAMETER	SYMBOL	UNIT	001 JAA 481028	001 JAA 481628	001 JAA 482528	001 JAA 484028	001 JAA 486028
RMS on state Current	IT	A	10	16	25	40	60
Mains Control Voltage	Vrms	Vac	48-480	48-480	48-480	48-480	48-480
Rep Peak Off state Voltage	Vdrm	Vpk	800	800	800	800	800
Peak one cycle surge Current (Non-Rep)	ITSM	A	100	160	250	400	750
On state Voltage Drop	VTM	Vac	1.6	1.6	1.6	1.6	1.6
Off state Leakage current	ldrm	mA	5	5	5	5	5
Zero T-On Voltage		Vpk	25	25	25	25	25
Critical Rate of Rise Off state Voltage	dv/dt	V/μs	400	400	500	500	500
Holding Current	IH	mA	50	50	75	80	100
Fusing Current	I²T	A²s	55	144	340	880	2800
Thermal Resistance	RTH	°C/W	2.4	2.1	0.9	0.6	0.6
Turn-On	T-On	ms	40	40	40	40	40
Turn-Off	T-Off	ms	80	80	80	80	80
Frequency Range	f	Hz	47~63	47~63	47~63	47~63	47~63
Operating Temp	T Oper	°C	-30 to +80	-30 to +80	-30 to +80	-30 to +80	-30 to +80

*Our policy is one of continuous development and specifications are subject to change without notice warranty is limited to a period of one year for relay value only

