

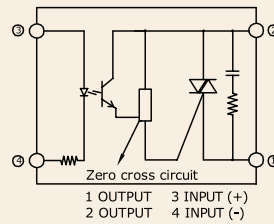
Series: 001 J/K

**Single Phase SSR (240VAC)
10~60Amps**

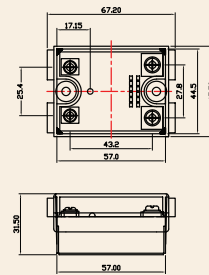
INPUT : DC Control
OUTPUT : Triac



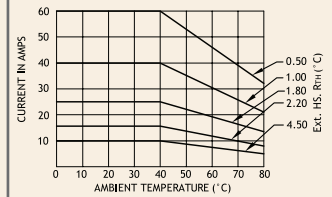
Schematic



Mechanical Drawing



Derating Curve



Salient Features

- Opto Isolation 4000 VAC • Zero Voltage Turn On/Random Turn On • TTL/CMOS Compatible (Sink mode)
- Output: NO/NC Configuration • Safety Cover Provision • Built-in Snubber • Panel Mountable/DIN Mountable
- Reverse Voltage Protection for DC/AC • Transient Protection Available (Optional)

ELECTRICAL SPECIFICATION @ TA = 25°C			NOTE: FOR RANDOM T-ON SSR, ADD LETTER 'K' IN PLACE OF 'J'				
PARAMETER	SYMBOL	UNIT	PRODUCT PART NUMBERS				
			001 JDA 331000	001 JDA 331600	001 JDA 332500	001 JDA 334000	001 JDA 336000

INPUT

PARAMETER	SYMBOL	UNIT	001 JDA 331000	001 JDA 331600	001 JDA 332500	001 JDA 334000	001 JDA 336000
Control Voltage Range		Vdc	3-32	3-32	3-32	3-32	4-32
Control Current Range		mA	1-20	1-20	1-20	1-20	1-25
Pick-up Voltage		Vdc	3.0	3.0	3.0	3.0	4.0
Drop-out Voltage		Vdc	1.0	1.0	1.0	1.0	1.0
Input Resistance		KOhms	1.6	1.6	1.6	1.6	1.6

OUTPUT

PARAMETER	SYMBOL	UNIT	001 JDA 331000	001 JDA 331600	001 JDA 332500	001 JDA 334000	001 JDA 336000
RMS on state Current	IT	A	10	16	25	40	60
Mains Control Voltage	Vrms	Vac	24-330	24-330	24-330	24-330	24-330
Rep Peak Off state Voltage	Vdrm	Vpk	600	600	600	600	600
Peak one cycle surge Current (Non-Rep)	ITSM	A	100	160	250	400	750
On state Voltage Drop	VTM	Vac	1.6	1.6	1.6	1.6	1.6
Off state Leakage current	ldrm	mA	5	5	5	5	5
Zero T-On Voltage		Vpk	25	25	25	25	25
Critical Rate of Rise Off state Voltage	dv/dt	V/μs	400	400	500	500	500
Holding Current	IH	mA	50	50	75	80	100
Fusing Current	I²T	A²s	55	144	340	880	2800
Thermal Resistance	RTH	°C/W	2.4	2.1	0.9	0.6	0.6
Turn-On [Zero/Random]	T-On	ms	10/0.1	10/0.1	10/0.1	10/0.1	10/0.1
Turn-Off [Zero/Random]	T-Off	ms	10	10	10	10	10
Frequency Range	f	Hz	47~63	47~63	47~63	47~63	47~63
Operating Temp	T Oper	°C	-30 to +80	-30 to +80	-30 to +80	-30 to +80	-30 to +80

