

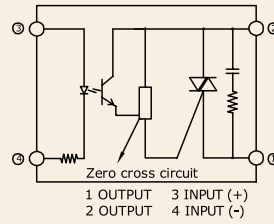
Series: 001 J/K

**Single Phase SSR (480VAC)
10~60Amps**

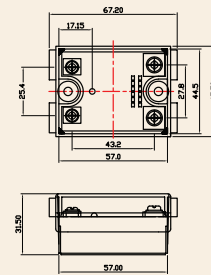
INPUT : DC Control
OUTPUT : Triac



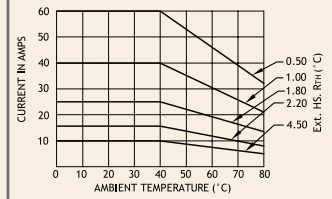
Schematic



Mechanical Drawing



Derating Curve



Salient Features

- Opto Isolation 4000 VAC • Zero Voltage Turn On/Random Turn On • TTL/CMOS Compatible (Sink mode)
- Output: NO/NC Configuration • Safety Cover Provision • Built-in Snubber • Panel Mountable/DIN Mountable
- Reverse Voltage Protection for DC/AC • Transient Protection Available (Optional)

ELECTRICAL SPECIFICATION @ TA = 25°C			NOTE: FOR RANDOM T-ON SSR, ADD LETTER 'K' IN PLACE OF 'J'				
PARAMETER	SYMBOL	UNIT	PRODUCT PART NUMBERS				
			001 JDA 481000	001 JDA 481600	001 JDA 482500	001 JDA 484000	001 JDA 486000

INPUT

PARAMETER	SYMBOL	UNIT	001 JDA 481000	001 JDA 481600	001 JDA 482500	001 JDA 484000	001 JDA 486000
Control Voltage Range		Vdc	3-32	3-32	3-32	3-32	4-32
Control Current Range		mA	1-25	1-25	1-25	1-25	1-25
Pick-up Voltage		Vdc	3.0	3.0	3.0	3.0	4.0
Drop-out Voltage		Vdc	1.0	1.0	1.0	1.0	1.0
Input Resistance		KOhms	1.3	1.3	1.3	1.3	1.3

OUTPUT

PARAMETER	SYMBOL	UNIT	001 JDA 481000	001 JDA 481600	001 JDA 482500	001 JDA 484000	001 JDA 486000
RMS on state Current	IT	A	10	16	25	40	60
Mains Control Voltage	Vrms	Vac	48-480	48-480	48-480	48-480	48-480
Rep Peak Off state Voltage	Vdrm	Vpk	800	800	800	800	800
Peak one cycle surge Current (Non-Rep)	ITSM	A	100	160	250	400	750
On state Voltage Drop	VTM	Vac	1.6	1.6	1.6	1.6	1.6
Off state Leakage current	ldrm	mA	5	5	5	5	5
Zero T-On Voltage		Vpk	25	25	25	25	25
Critical Rate of Rise Off state Voltage	dv/dt	V/μs	400	400	500	500	500
Holding Current	IH	mA	50	50	75	80	100
Fusing Current	I²T	A²s	55	144	340	880	2800
Thermal Resistance	RTH	°C/W	2.4	2.1	0.9	0.6	0.6
Turn-On [Zero/Random]	T-On	ms	10/0.1	10/0.1	10/0.1	10/0.1	10/0.1
Turn-Off [Zero/Random]	T-Off	ms	10	10	10	10	10
Frequency Range	f	Hz	47~63	47~63	47~63	47~63	47~63
Operating Temp	T Oper	°C	-30 to +80	-30 to +80	-30 to +80	-30 to +80	-30 to +80

