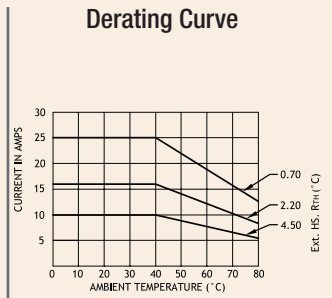
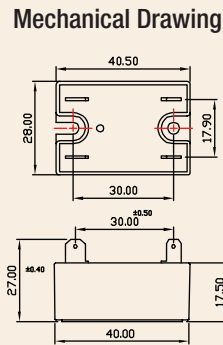
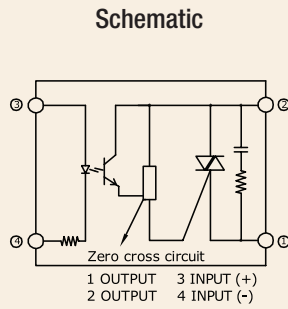


Series: 018 J/K

**Single Phase SSR (240VAC)
10~25Amps**

INPUT : DC Control
OUTPUT : Triac



Salient Features

- Opto Isolation 4000 VAC
- Zero Voltage Turn On/Random Turn On
- TTL Compatible (Sink mode)
- LED for Status Indication
- Output: NO/NC Configuration
- Built-In Snubber
- Reverse Voltage Protection
- Panel/DIN Mountable

| ELECTRICAL SPECIFICATION @ TA = 25°C | | | NOTE: FOR RANDOM T-ON SSR, ADD LETTER 'K' IN PLACE OF 'J' | | |
|---|------------------|------------------|---|----------------|----------------|
| PARAMETER | SYMBOL | UNIT | PRODUCT PART NUMBERS | | |
| | | | 018 JDA 331000 | 018 JDA 331600 | 018 JDA 332500 |
| INPUT | | | | | |
| Control Voltage Range | | Vdc | 3-32 | 3-32 | 3-32 |
| Control Current Range | | mA | 1-20 | 1-20 | 1-20 |
| Pick-up Voltage | | Vdc | 3.0 | 3.0 | 3.0 |
| Drop-out Voltage | | Vdc | 1.0 | 1.0 | 1.0 |
| Input Resistance | | KOhms | 1.6 | 1.6 | 1.6 |
| OUTPUT | | | | | |
| RMS on state Current | I _T | A | 10 | 16 | 25 |
| Mains Control Voltage | V _{rms} | Vac | 24-330 | 24-330 | 24-330 |
| Repetitive Peak Off state Voltage | V _{drm} | Vpk | 600 | 600 | 600 |
| Peak one cycle surge Current (Non-Rep) | I _{TSM} | A | 100 | 160 | 208 |
| On state Voltage Drop | V _{TM} | Vac | 1.6 | 1.6 | 1.6 |
| Off state Leakage current @ rated voltage | I _{drm} | mA | 5 | 5 | 5 |
| Zero T-On Voltage | | Vpk | 25 | 25 | 25 |
| Critical Rate of Rise Off state Voltage | dv/dt | V/μs | 400 | 400 | 475 |
| Holding Current | I _H | mA | 50 | 50 | 100 |
| Fusing Current | I ² T | A ² s | 55 | 144 | 259 |
| Thermal Resistance (Junction to case) | R _{TH} | °C/W | 2.4 | 2.1 | 2.0 |
| Turn-On [Zero/Random] | T-On | ms | 10/0.1 | 10/0.1 | 10/0.1 |
| Turn-Off [Zero/Random] | T-Off | ms | 10 | 10 | 10 |
| Frequency Range | f | Hz | 47~63 | 47~63 | 47~63 |
| Operating Temperature | T Oper | °C | -30 to +80 | -30 to +80 | -30 to +80 |

