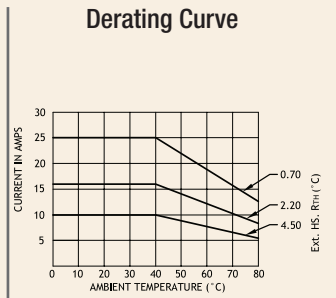
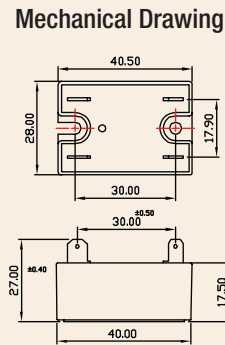
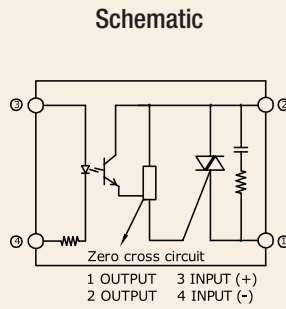


Series: 018 J/K

**Single Phase SSR (480VAC)
10~25Amps**

INPUT : DC Control
OUTPUT : Triac



Salient Features

- Opto Isolation 4000 VAC
- Zero Voltage Turn On/Random Turn On
- TTL Compatible (Sink mode)
- LED for Status Indication
- Output: NO/NC Configuration
- Built-In Snubber
- Reverse Voltage Protection
- Panel/DIN Mountable

ELECTRICAL SPECIFICATION @ TA = 25°C			NOTE: FOR RANDOM T-ON SSR, ADD LETTER 'K' IN PLACE OF 'J'		
PARAMETER	SYMBOL	UNIT	PRODUCT PART NUMBERS		
			018 JDA 481000	018 JDA 481600	018 JDA 482500
INPUT					
Control Voltage Range		Vdc	3-32	3-32	3-32
Control Current Range		mA	1-20	1-20	1-20
Pick-up Voltage		Vdc	3.0	3.0	3.0
Drop-out Voltage		Vdc	1.0	1.0	1.0
Input Resistance		KOhms	1.6	1.6	1.6
OUTPUT					
RMS on state Current	I _T	A	10	16	25
Mains Control Voltage	V _{rms}	Vac	48-480	48-480	48-480
Repetitive Peak Off state Voltage	V _{drm}	Vpk	800	800	800
Peak one cycle surge Current (Non-Rep)	I _{TSM}	A	100	160	208
On state Voltage Drop	V _{TM}	Vac	1.6	1.6	1.6
Off state Leakage current @ rated voltage	I _{drm}	mA	5	5	5
Zero T-On Voltage		Vpk	25	25	25
Critical Rate of Rise Off state Voltage	dv/dt	V/μs	400	400	475
Holding Current	I _H	mA	50	50	100
Fusing Current	I ² T	A ² s	55	144	259
Thermal Resistance (Junction to case)	R _{TH}	°C/W	2.4	2.1	2.0
Turn-On [Zero/Random]	T-On	ms	10/0.1	10/0.1	10/0.1
Turn-Off [Zero/Random]	T-Off	ms	10	10	10
Frequency Range	f	Hz	47~63	47~63	47~63
Operating Temperature	T _{Oper}	°C	-30 to +80	-30 to +80	-30 to +80

