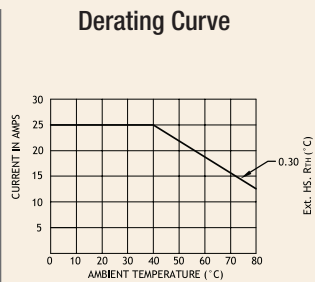
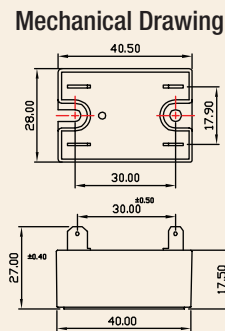
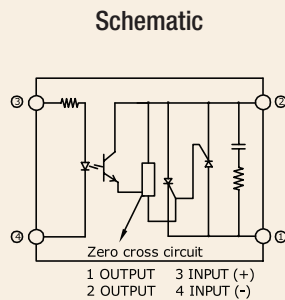


# Series: 018 SJ/K

**Single Phase SSR (240~480VAC)  
25Amps**

INPUT : DC Control  
OUTPUT : SCR



### Salient Features

- Opto Isolation 4000 VAC
- Zero Voltage Turn On/Random Turn On
- TTL Compatible (Sink mode)
- LED for Status Indication
- Output: NO/NC Configuration
- Built-In Snubber
- Reverse Voltage Protection
- Panel/DIN Mountable

ELECTRICAL SPECIFICATION @ TA = 25°C			NOTE: FOR RANDOM T-ON SSR, ADD LETTER 'K' IN PLACE OF 'J'	
PARAMETER	SYMBOL	UNIT	PRODUCT PART NUMBERS	
			018 SJDA 242500	018 SJDA 482500
<b>INPUT</b>				
Control Voltage Range		Vdc	3-32	3-32
Control Current Range		mA	1-20	1-20
Pick-up Voltage		Vdc	3.0	3.0
Drop-out Voltage		Vdc	1.0	1.0
Input Resistance		KOhms	1.6	1.6
<b>OUTPUT</b>				
RMS on state Current	$I_T$	A	25	25
Mains Control Voltage	$V_{rms}$	Vac	24-330	48-480
Repetitive Peak Off state Voltage	$V_{drm}$	Vpk	600	800
Peak one cycle surge Current (Non-Rep)	$I_{TSM}$	A	300	300
On state Voltage Drop	$V_{TM}$	Vac	1.6	1.6
Off state Leakage current @ rated voltage	$I_{drm}$	mA	5	5
Zero T-On Voltage		Vpk	25	25
Critical Rate of Rise Off state Voltage	$dv/dt$	V/ $\mu$ s	300	300
Holding Current	$I_H$	mA	100	100
Fusing Current	$I^2T$	A <sup>2</sup> s	510	510
Thermal Resistance (Junction to case)	RTH	°C/W	2.35	2.35
Turn-On [Zero/Random]	T-On	ms	10/0.1	10/0.1
Turn-Off [Zero/Random]	T-Off	ms	10	10
Frequency Range	f	Hz	47~63	47~63
Operating Temperature	T Oper	°C	-30 to +80	-30 to +80

