

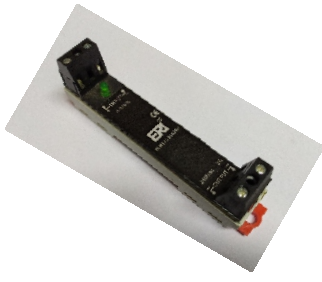
DIN17D600500

INPUT : 4-32 Vdc Control
OUTPUT : SCR Output.

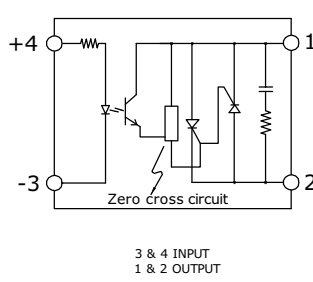


Series : DIN 17D

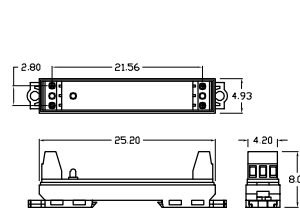
Product image



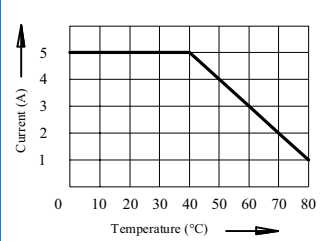
Schematic



Mechanical drawing



Derating curve



Salient features:

- * Zero switching/random switching
- * Transient over voltage protection(Optional)
- * LED indicator showing relay ON status
- * Opto-Isolation 4000VAC
- * IP20 protection

Electrical specifications :

@TA=25°C

Characteristics	Units	Specification value
Input Voltage Range	Vdc	4 - 32
Maximum Pickup Voltage	Vdc	4.0
Minimum Drop Out Voltage	Vdc	1.0
Control Current Range	mA	3-20
Typical Input Current Range @ 24Vdc	mA	16.0
RMS On State Current (IT)	A	5
Main Control Voltage (VRMS)	Vac	48-600
Switching configuration	---	SPDT-NO
Repetitive Peak Off State Voltage (VDRM)	Vac	800
Non Repetitive Surge Current (1 cycle surge)	A	350
Fusing Current (I ² t)	A ² s	630
Holding Current (IH)	mA	100
Critical Rise of Off State Voltage DV/DT	V/μs	500
RMS On State Voltage Drop across SSR O/P at rated Current (VTM)	Vac	1.6
Off State Leakage Current (IDRM)	mA	10
Zero Turn On Voltage	Vpk	15
Maximum Turn-On Time	ms	10
Maximum Turn-Off Time	ms	10
Operating Temperature	°C	-30 to +80
Storage Temperature	°C	-30 to +100
Dielectric Strength VISO	Vac	4000
Thermal Resistance Junction to Case	°C/W	1.5
Frequency Range	Hz	47-63

Input

Output