

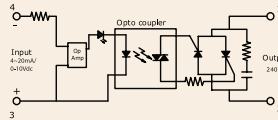
Series: 020 PAC

**Phase Angle Control SSR (240VAC)
25~75Amps**

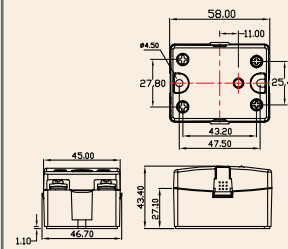
INPUT : 4~20mA/0-10Vdc
OUTPUT : SCR



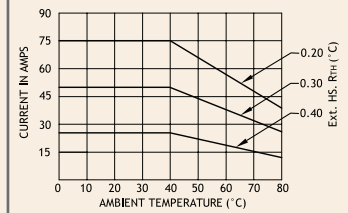
Schematic



Mechanical Drawing



Derating Curve



Salient Features

- Opto Isolation 2500 VAC • Input Control 0~10 Vdc or 4~20m Amps • Built in Power Supply • Built - In Snubber
- Panel Mountable

ELECTRICAL SPECIFICATION @ TA = 25°C			PRODUCT PART NUMBERS		
PARAMETER	SYMBOL	UNIT	020 PAC 242510/42	020 PAC 245010/42	020 PAC 247510/42
INPUT					
Control Current Range		mA	4~20	4~20	4~20
Control Voltage Range		Vdc	1~10	1~10	1~10
OUTPUT					
RMS on state Current	I _T	A	25	50	75
Mains Control Voltage	V _{rms}	Vac	24-240	24-240	24-240
Rep Peak Off state Voltage	V _{drm}	Vpk	600	600	600
Peak one cycle surge Current (Non-Rep)	I _{TSM}	A	300	520	750
On state Voltage Drop	V _{TM}	Vac	1.6	1.6	1.6
Off state Leakage current	I _{drm}	mA	5	5	5
Critical Rate of Rise Off state Voltage	dv/dt	V/μs	300	1000	1000
Holding Current	I _H	mA	80	150	200
Fusing Current	I ² T	A ² s	510	1350	2812
Thermal Resistance	R _{TH}	°C/W	2.35	1.0	0.6
Turn-On	T-On	ms	1.0	1.0	1.0
Turn-Off	T-Off	ms	10	10	10
Frequency Range	f	Hz	47~63	47~63	47~63
Operating Temp	T Oper	°C	-30 to +80	-30 to +80	-30 to +80

