



INDOINFY STEELCORP

redefining **FABRICATION**



Manufacturer of Stainless Steel & Mild Steel Equipment

Storage Tanks, Process Tanks, Pressure Vessels, Agitators,
Mixers & Other General Engineering Activities



13/1, Bazri, Badkal Pali Road, NIT Faridabad 121001, Haryana

www.indoinfy.com

www.indoinfy.com/indiamart



Our mission

We will be the customers' preferred choice for steel fabrication solutions. We will strive to continuously improve and provide the best value in products, services and solutions to our customers.



Jacketed Heater 5,000L

Light Glass & Sight Glass Equipped Insulated Mirror Polished
SS304 Food Grade Triple Layered Vessel

About us

Our vast industry experience of over 25 years has garnered us with the expertise in manufacturing and supplying a specialised range of heavy fabricated products including **pressure filters, pressure vessels, insulated hot/cold water storage tanks, truck mounted demineralised water supply tanks, water & wastewater collection and storage tanks, chemical tanks, fuel oil storage tanks, acid storage tanks, settling tanks, biological reactors, process tanks, inside/outside coil liquid heaters, jacketed tanks, agitator tanks, skids, screw conveyors, and industrial clamps & vices.**

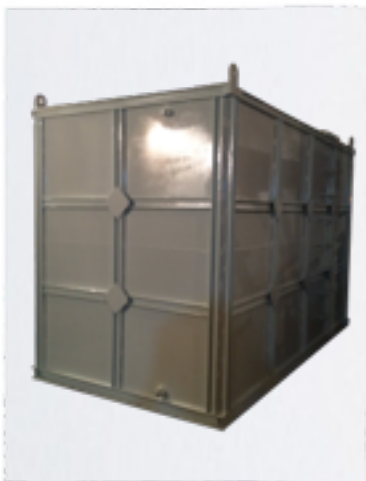
Our manufactured tanks and vessels are used in water & wastewater industry, chemical processing & manufacturing industry, HVAC, food processing, dairy & beverage industry etc. We utilise the best quality raw material and have the ability to manufacture and fabricate both in Mild Steel (IS:2062) and Stainless Steel (SS304, SS304L, SS316, SS316L).



Agitator 600 L
Mirror Polished SS304
Food Grade, 3HP

Our offered Mild Steel products are also available in a variety of inside and outside coatings including **fibre reinforced plastic (FRP), rubber lined, sand blasted epoxy finish, spray paint, powder coating, bitumen etc.** Our Stainless Steel products are offered both in **matte and mirror polished surface finishes.**

We also offer sheet metal fabricated products and services utilising shearing machines, power presses and brake presses to manufacture and supply various specialty components used in the processes of our esteemed clientele and also offer finished ready to use products such as fire hose boxes, electrical panels, tool boxes & tool chests, de-aerator trays & accessories, pneumatic scissor lifts etc. among many others.



Fire Water
Storage 25,000 L
Mild Steel, Sand Blasted
Epoxy Paint



Hopper 2,000 Kg
Matte Polished SS304
Food Grade



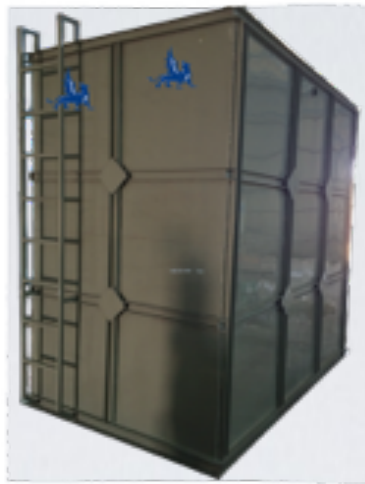
Agitator 2,000 L
Matte Polished SS304
Food Grade, Bottom Mounted
7.5HP Motor



Pressure Vessel

5,000 L

Test Pressure 8 kg/cm²,
Mild Steel



Aeration Tank

25,000 L

Mild Steel



Oil Storage Tank

1,000L

Matte Polished SS304

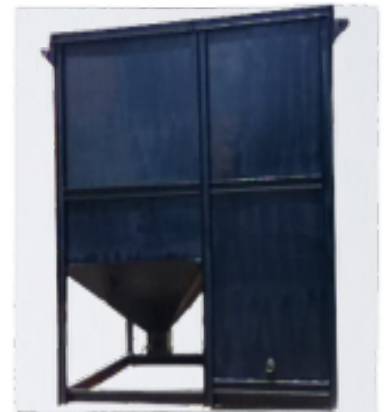
In our fabrication and manufacturing methodology we utilise the following to deliver the best quality finished product:

- * Innovative cost effective solutions
- * High quality raw material
- * Highly skilled workmanship
- * Use of advanced technology
- * Complete quality checks and testing procedures
- * Low maintenance highly durable products
- * Efficient time bound delivery
- * Complete customer satisfaction

Our manufacturing process strictly adhere to the prescribed industry standards and international quality norms & guidelines to ensure flawless quality and safe operation.

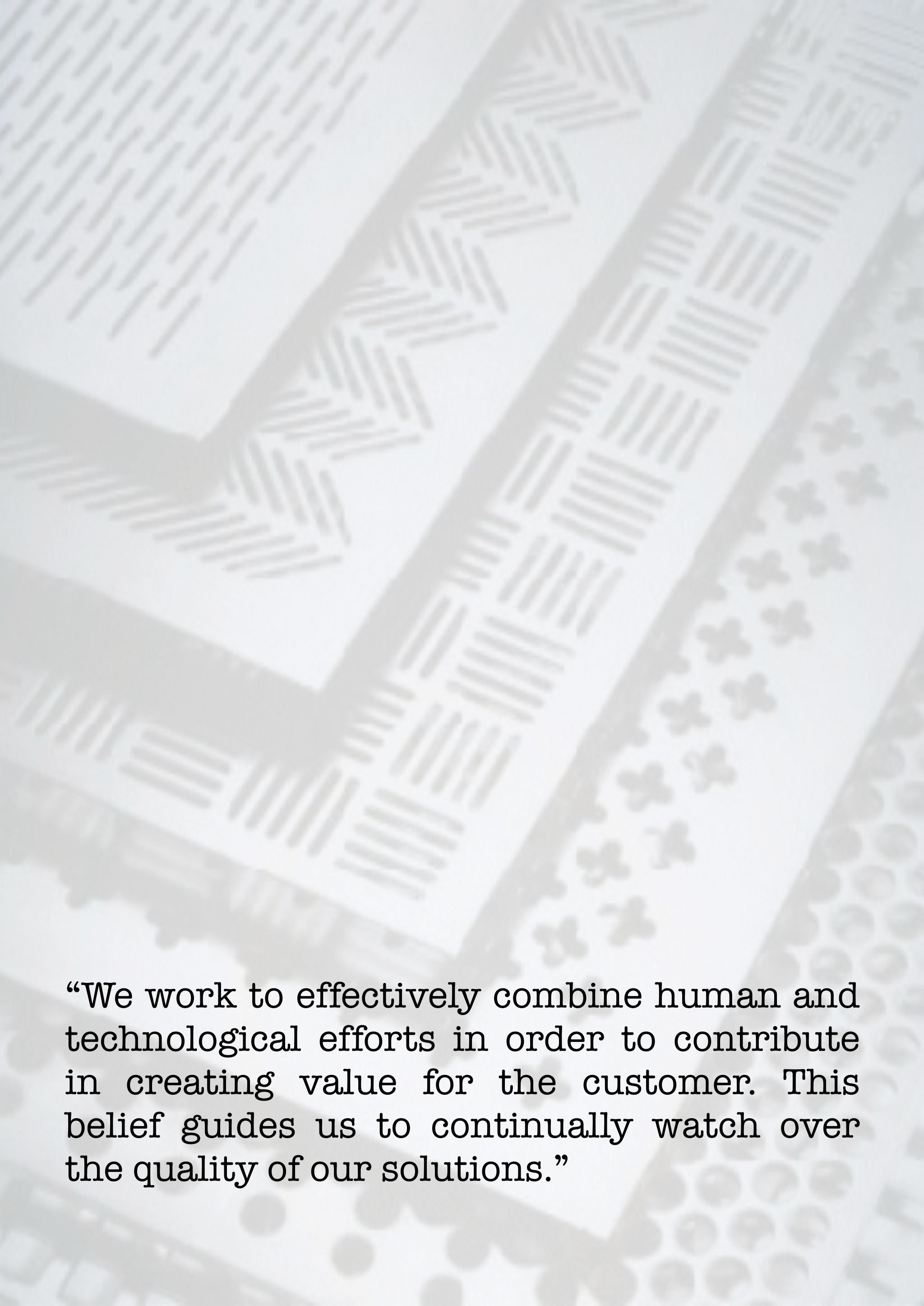
We are always enthusiastic to any and all challenges related to product development, design, customisation required by the customer, and maintaining definitive quality standards as required by our valued customers. Our excellence in workmanship is reflected in the quality and perfection we achieve consistently and dedicatedly work to maintain it. With our commitment, dedication, and our endeavour we aim to be the customers' preferred choice in steel fabrication and erection solutions and to provide the best value in products, services and solutions.

Backing on the years of industry presence, we understand the responsibility that comes with being a trustworthy name and make sure that we leave no stones unturned to deliver with absolute satisfaction.



Tube Settler

Mild Steel



“We work to effectively combine human and technological efforts in order to contribute in creating value for the customer. This belief guides us to continually watch over the quality of our solutions.”



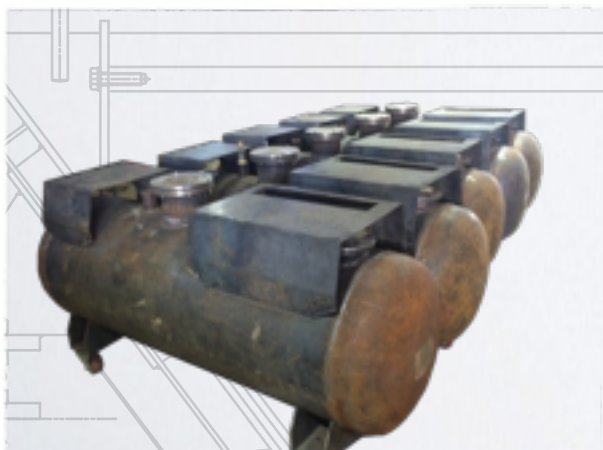
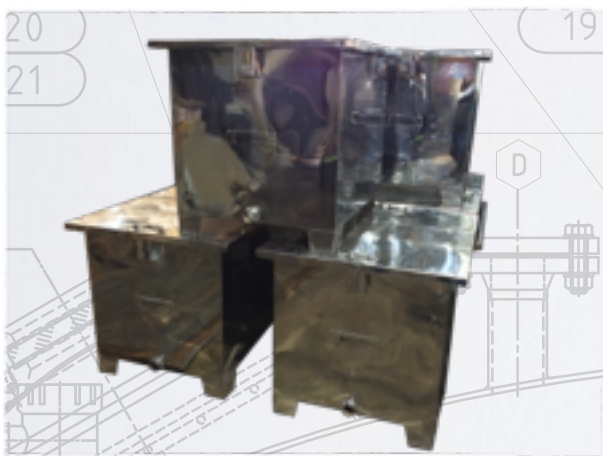
Agitator 2,000L

Mirror Polished SS304 Chemical Mixer, 3HP Flame Proof Motor, VFD & Gearbox for 100-480 RPM

Commitment to quality

We manufacture our products to the last bit of details and work to deliver the best of the products to our customers. We aim to provide a complete hassle free experience, and we take a modest pride in delivering the product as envisioned. Our brainstorming comprises that we follow -

- Latest codes and acceptable industry standards
- Offer cost effective innovative solutions
- Utilise the best available technologies and trends
- Maintain a technical and professional approach
- Deliver on our commitments



NOZZLES	
Nos.	QTY.
A	1
B	1
C	1
D	2
E	1
F	1
G	1
H	1
J	1

5

16

17

18

4 PLS

10

1

HA

8

6

THK.

Product portfolio

We are dedicatedly engaged in offering the best in class **Heavy Fabrication Services** to our esteemed clientele. Our products are highly valued for its low maintenance, high durability and fine finish. The offered products in both Mild Steel & Stainless Steel are:

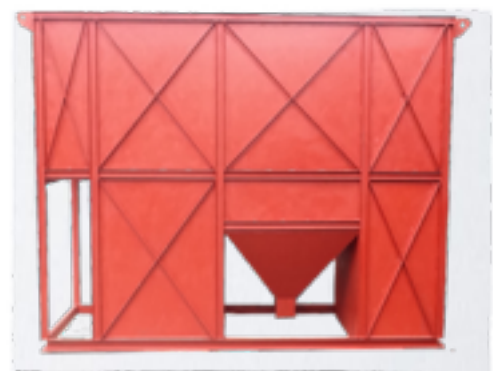
1. Tanks & pressure vessels

- Pressure vessels & filters
- Insulated hot/cold water storage tanks
- Water & wastewater collection and storage tanks
- Vacuum tanks
- Chemical tanks
- Fuel oil storage tanks
- Acid storage tanks
- Settling tanks and biological reactors
- Process tanks
- Water & oil supply tankers
- Underground oil storage tanks
- Hydraulic press frames



2. Specialised equipment

- Limpet heaters
- Jacketed heaters
- Agitators & mixers with top mounted motor
- Agitators & mixers with bottom mounted motor
- Pneumatic actuated sound proof canopies





Containerised Sewage Treatment Plant 75 KLD

Mild Steel Construction, Epoxy Primer & Paint, Aerobic
MBBR Process, Dimension 6.0 m x 1.75 m x 3.0 m

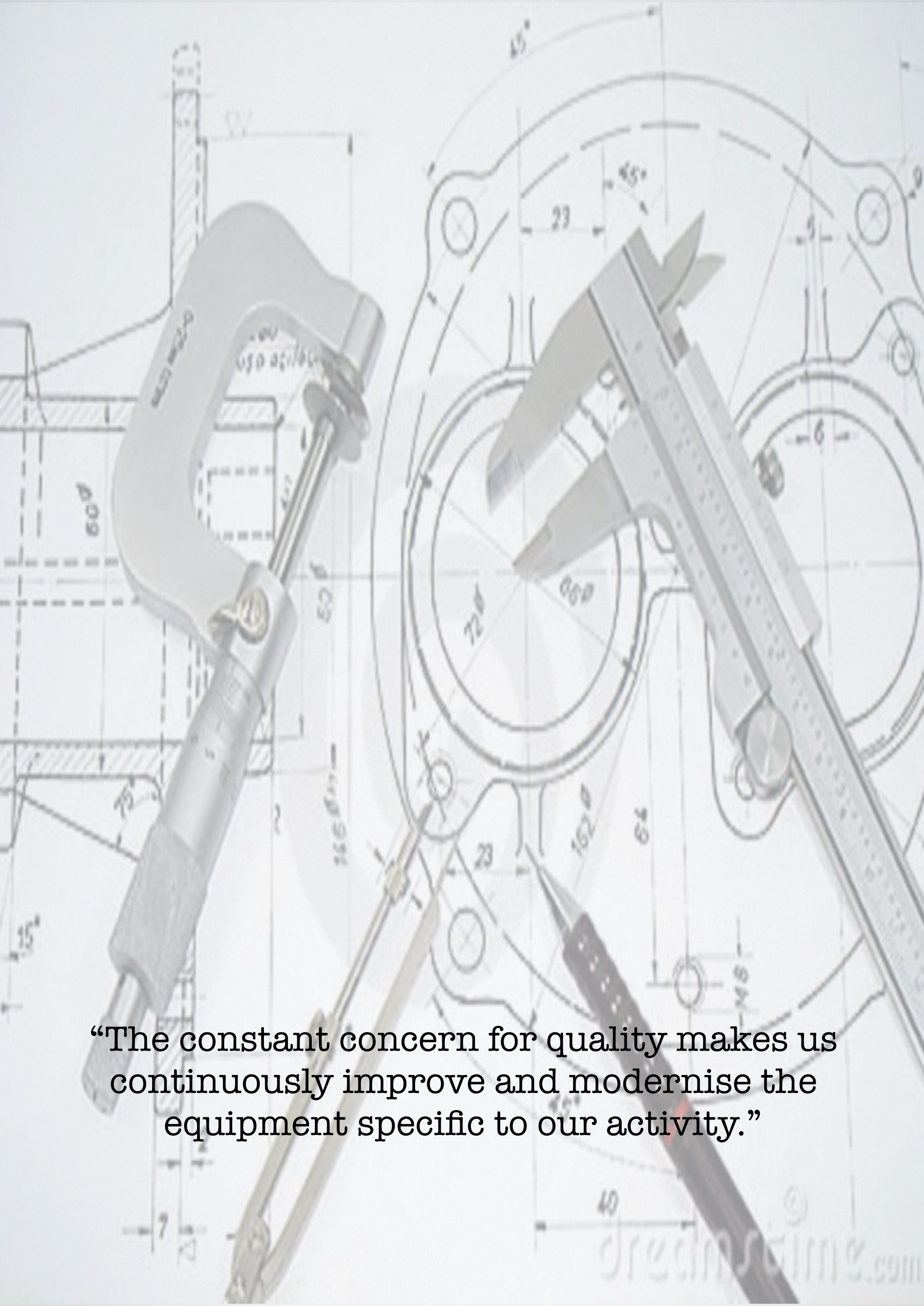
Customer Relations

Our customers value our experience, expertise and commitment to quality. We are a company our customers rely upon, a company with an open mind ready to embrace new opportunities, and driven to deliver exceptional value to its customers.

Our products and services are highly acknowledged for their reliability and our commitment to quality is well reflected in the products we manufacture and deliver.

The quality of our solutions is proved by the strong partnerships built over the years. We make sure that our products are infused with high-end quality and reliability, ensuring a continued relationship with our highly esteemed clients.



The background is a technical drawing of a mechanical part, possibly a flange or a bracket, with various circular features and dimensions. Overlaid on this drawing are several engineering tools: a vernier caliper on the right, a depth gauge on the left, and a pair of compasses at the bottom. The tools are rendered in a semi-transparent, light gray style. The text is centered in the lower half of the image.

“The constant concern for quality makes us continuously improve and modernise the equipment specific to our activity.”



Anaerobic Sewage Treatment Plant 50 KLD

Mild Steel Construction, FRP Lined Inside & Outside,
Underground Tank, Top Covered
Dimension 6.0 m x 1.5 m x 3.0 m

QUALITY ASSURANCE

Our manufacturing process strictly adhere to the prescribed industry standards and international quality norms & guidelines to ensure innovative cost effective solutions with flawless quality, low maintenance highly durable products and safe efficient operation. We are a registered member with FSIA and NSIC and are working to make the necessary upgrade to ISO 9001:2008 certifications.

Our manufacturing process use the best quality raw materials conforming to international quality standards and our constructions are sturdy, reliable and durable. Our concern for quality ensures our products to be of outstanding workmanship and are designed to perfection with high durability and cost effectiveness.

We provide an unmatched customer care and our team of quality controllers keep a check during all stages of manufacturing to ensure a defect free product delivery. We lay emphasis on maintaining international quality in all our products and test the products for -

- Defect-free raw material
- Construction methodology
- Technical and dimensional accuracy
- Weld quality and strength
- Load bearing capacity
- Reaction to environmental factors
- Paint quality and thickness
- Quality of the finished product



RO Pressure Vessel

SS304, Mirror Polished, Diameter 300MM, Test Pressure 6 kg/cm², Volume 100L



Mild Steel Pressure Vessel
Conforming to IS:2062, Test Pressure 6 kg/cm²,
Volume 2,000L



MS Pressure Vessel

Diameter 2,000MM, Test Pressure
6 kg/cm², Volume 5,500L

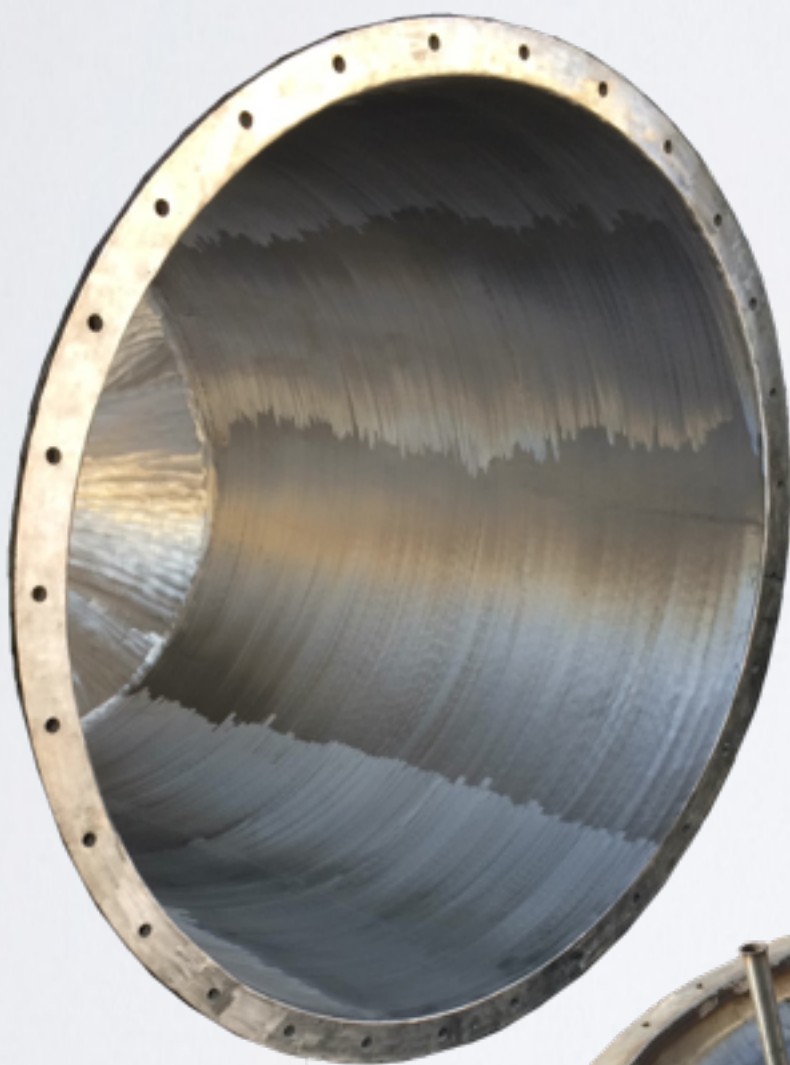
MANUFACTURING ASPECTS

Making sure of latest technologies, we offer products that have the following features:

- Technically accurate robust construction
- Resistant to environmental factors
- Low maintenance high durability

As one of the leading manufacturers and suppliers of storage tanks and pressure vessels, we believe in providing and maintaining:

- Reliable products and services
- World class infrastructure
- Quality control
- Customisation facility
- Ability to feed bulk orders
- Timely delivery
- Transparent business dealings
- Complete customer satisfaction



Pressure
Vessel with
Flanged Top
SS304, Mirror
Polished, Diameter
1500MM, Test
Pressure 6 kg/cm²,
Volume 2500L

THE BEST TEAM WINS

We are empowered by a competent team of professionals, working in coordination with each other and executing the jobs as per planned schedules and requirements of our customers. Our dedicated, well qualified, and technical manpower combined with their fine sense of craftsmanship and knowledge of the latest state of the art software and available products are able to address any and all challenging scenarios.

Our experts are highly adept at their art and produce precise fabrications in a time bound manner. They are adept in utilizing the installed machines and technology and work rigorously for achieving organizational goals. They maintain close coordination with each other for ensuring smooth and uninterrupted functioning of the organization.

Our Team comprises:

- Engineers
- Quality controllers
- Customer support personnel
- Warehousing, packaging & logistics personnel
- Sales and marketing executives





Truck Mounted RO Water Tanker 15,000L

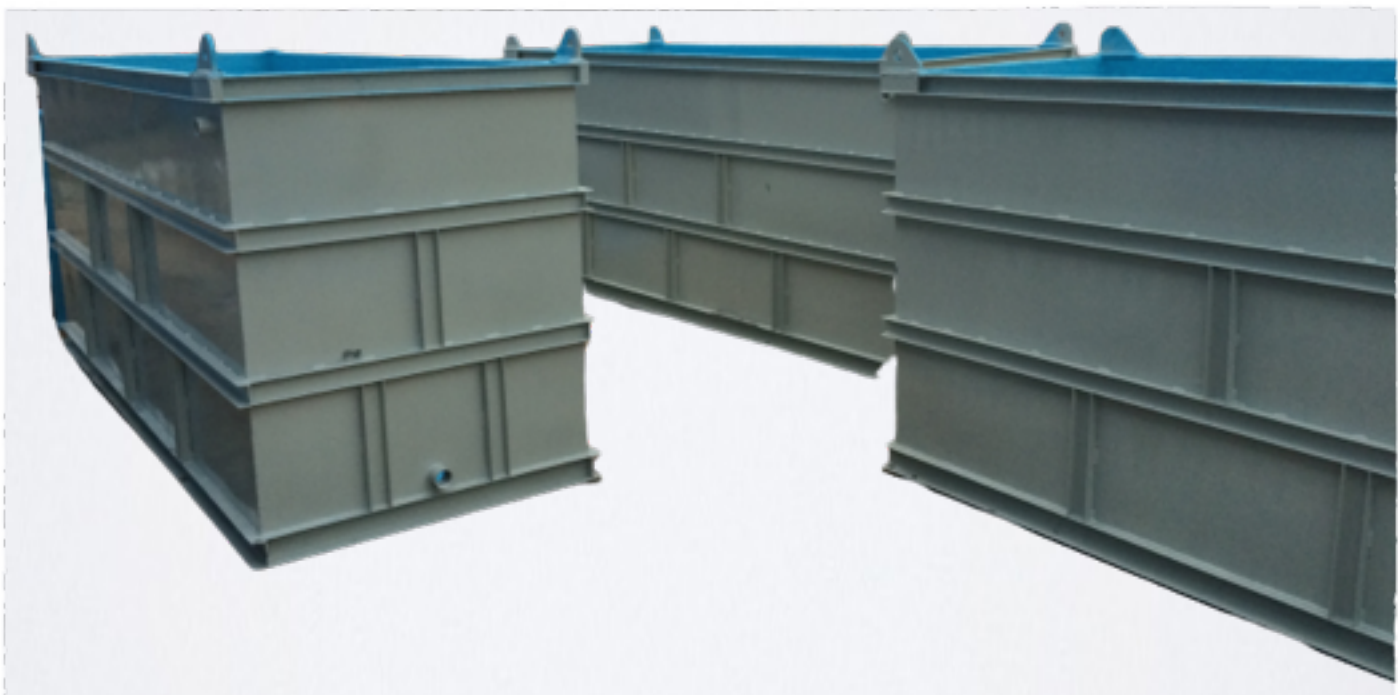
Matte Polished SS304 Food Grade, Inside Double
Partition, with Independent Outlets & Valves

CLIENTELE'

Our customers approach us for our unmatched best quality products and services and our commitment to total customer satisfaction. The quality of our products and solutions is proved by the strong partnerships we have built over the years. We boast of a long list of clients who are spread all across India . We make sure that we provide absolute satisfaction to all our clients.

Clients Served:

- Barmalt India
- Gopal Corp
- Apis India
- Continental Engines
- Heatex (India) Corporation
- Lampadaire Infrastructure
- TNA Infrastructure
- RD Enviro
- Shaw Almex India
- VeeGee Industrial Enterprises
- Tecumseh Products
- Pranav Vikas
- Manesar Steel Processing
- Dharna Engineers
- RT Automation
- Swastika Automation
- IFB Industries
- Whirlpool India
- Electrolux
- Thermadyne
- Allied Group of Industries
- Anjali Foundation
- Raga Engineers
- Ridhi Constructions
- Enki Water
- SenseNut Technologies
- RM Components
- Westwind Concepts
- Bhartiya Valves
- LPS Screws & Fastners
- Usha
- Shivalik Industries
- Imperial Auto
- Quad Solar
- Sarvodya Hospitals
- Apollo Hospitals
- Krishna Industries
- Achievers Buildcon
- Saanvi Engineering
- Archana Shudh Jal



List of machines

S.No	Machine	Quantity	Specs
FABRICATION SHOP			
1	Plate Bending Machine	1	1500 mm x 16mm
2	EOT Gantry	1	7.5 T, 40ft Wide
3	Brake Press	1	100 T (3000 mm x 16 mm)
4	Shearing Machine	1	1600 mm x 4 mm
5	Power Press	8	10T, 30T, 50T, 100T
6	Radial Drill / Tapping	3	32 mm / 16mm
7	Pneumatic Pipe Cutting	1	40 mm dia.
5	MIG Welding	14	200A - 400A
9	TIG Welding	2	400 A
10	Arc Welding	2	350 A
11	Gas Cutter / PUG	2	-
12	Jig Saw	2	-
13	Hand Grinder	12	-
14	Hand Drill	6	-
15	Polishing & Buffing M/c	2	-
16	Generator	1	62 kVA
TOOL SHOP			
17	Lathe	1	6 ft.
18	Surface grinder	1	-
PAINT SHOP			
19	Powder Coating Booth with Furnace	1	10' x 6' x 8'
20	Compressor	2	Elgi 6kg

Indoinfy SteelCorp

redefining **FABRICATION**

13/1 Bazri, Badkhal Pali Road, NIT Faridabad, Haryana –
121 001, India

+(91)-9717748989

+(91)-9560249084

nishant@indoinfy.com

support@indoinfy.com

www.indoinfy.com