

“MICRO” Magnetic Differential Pressure Gauges are designed to measure the difference in pressure between two points (High & Low) in a system where static pressure is very high.

Construction Features:

Nominal size –

Ø 40, 63, 80, 100 & 150 mm

Accuracy –

±2% or ±2.5% of full scale (Ascending)

Operating Temperature –

Ambient : -25°C to 65°C

Process : +80°C Maximum (Standard),
+200°C (Optional)

Housing –

Aluminium (Standard) / S. S. 316 (Optional)

Case & Bezel –

S. S. 304 with Neoprene Front Seal.

Ingress protection –

IP 65

Pressure element –

Stainless Steel Compression Spring

Magnetic Piston –

Hard Ferrite

Maximum static pressure –

200 bar / 450 bar / 700 bar

Wetted parts –

Aluminium, S. S. 302 spring / Teflon & Ceramic Magnet

Dial –

Aluminium – White with black numerical

Pointer –

Aluminium, black finish

Window –

Toughened / Safety Glass

Seals –

Viton & EPDM ‘O’ ring

Types of mounting –

In line direct mounting

Front flange panel mounting

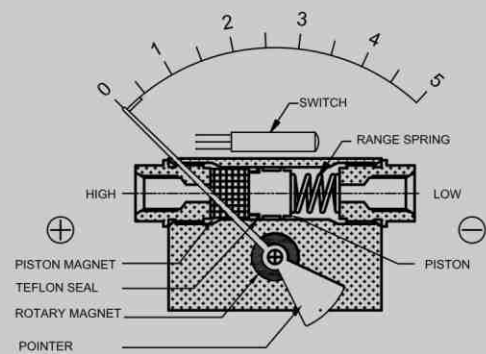
2” pipe mounting

Process connection –

1/4” NPT (F) Standard

Pressure ΔP range –

0 ... 10 bar



Operating Principle:

High & Low pressures are separated by a sensor assembly consisting of a magnet, piston, Teflon seal and a range spring. The difference in pressure causes the sensor assembly to move in proportion to the change against a range spring.

A rotary magnet located in a separate body cavity and isolated from the acting pressures, is rotated by magnetic coupling as per the linear movement of the sensor assembly. A pointer attached to the rotary magnet indicates differential pressure on the dial.

Switch: Reed switches are located adjacent to the pressure chamber and are activated by the magnetic field of the sensor assembly.

Optional features –

Switching facility (Between 20 to 100% of full span) 15 VA, 0.5 Amps, 230 V AC / 200 VDC or 100VA, 1.0 Amps, 230 V AC / 200 VDC

Case liquid filled

Red follower pointer

Application –

Filter Manufacturer

Water treatment plant

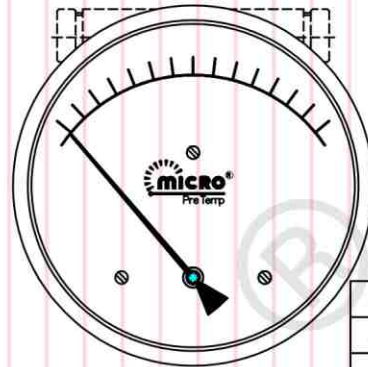
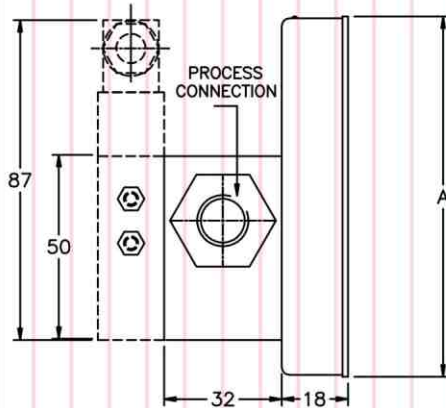
Textile Machinery

Air dryer system

Pharmaceutical industries

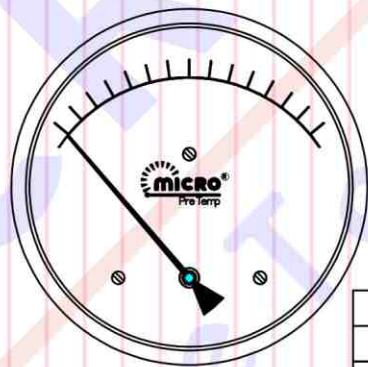
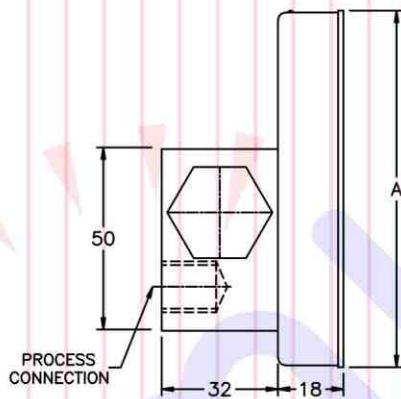
Air, Gas & Liquid media

Side Entry



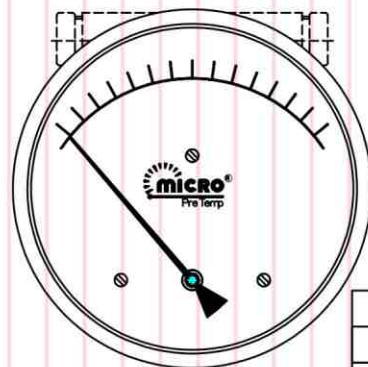
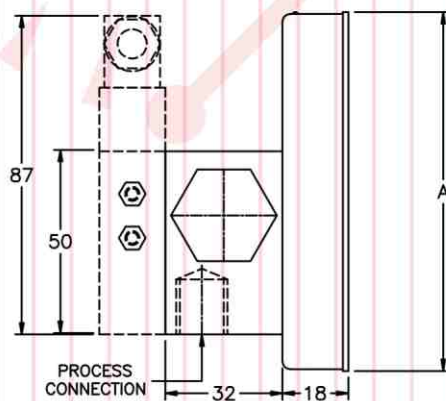
SIZE	A
40mm	39
63mm	62.5
80mm	79
100mm	98
150mm	149

Back Entry



SIZE	A
40mm	39
63mm	62.5
80mm	79
100mm	98
150mm	149

Bottom Entry



SIZE	A
40mm	39
63mm	62.5
80mm	79
100mm	98
150mm	149

Model De-codification

Model De-codification			
1.	Series / Basic Model with Static Pressure		XXXXX
	MD100	MICRO Magnetic DP Gauge with 100 bar Static Pressure	
	MD200	MICRO Magnetic DP Gauge with 200 bar Static Pressure	
	MD400 MD700	MICRO Magnetic DP Gauge with 400 bar Static Pressure MICRO Magnetic DP Gauge with 700 bar Static Pressure	
2	Dial Size (S. S. 304 Casing with Neoprene Rubber Ring)		XXX
	04S	40 mm (1 ½") Dial	
	06S	63 mm (2 ½") Dial	
	08S	80 mm (3") Dial	
	10S	100 mm (4") Dial	
	15S	150 mm (6") Dial	
3	Wetted Parts		XX
	AL	Aluminium Enclosure	
	SA	S.S. 316 wetted parts with Aluminium Enclosure	
	SS	SS 316 Wetted parts with enclosure	
4	Mounting		XX
	IL	In-Line Mounting	
	DB	Bottom Mounting	
	PM	Panel Mounting	
	YM	Yoke (Pipe) Mounting	
5	Connection		XXX
	4BF	1/4" BSP (F) (Standard)	
	4NF	1/4" NPT (F)	
	OTH	Others through Adaptors, Please specify	
6	Types of Magnetic Reed Switch with DIN Connector		XX
	WS	Without Switch	
	1S	1 SPDT	
	2S	2 SPDT	
7	Reed Switch Rating		X
	0	None	
	1	15 VA, 0.5 Amp, 125 VAC, / 200 VDC	
	2	100 VA, 1.0 Amp, 230 VAC / 300 VDC	
8	Option		X
	0	None	
	1	Liquid Filling	
	2	Red Pointer Follower	
	3	Dual Scale (Please Specify the unit for both scale)	
9	Ranges		
	Range Code		Range
	For bar	For Kg/cm²	
	B01	K01	0 to 0.25
	B02	K02	0 to 0.5
	B03	K03	0 to 0.75
	B04	K04	0 to 1.0
	B05	K05	0 to 1.6
	B06	K06	0 to 2.0
	B07	K07	0 to 2.5
	B08	K08	0 to 3.0
	B09	K09	0 to 3.5
	B10	K10	0 to 4.0
	B11	K11	0 to 5.0
	B12	K12	0 to 6.0
	B13	K13	0 to 7.0
	B14	K14	0 to 9.0
B15	K15	0 to 10.0	
OTH –Others (Please specify unit & ranges)			XXX