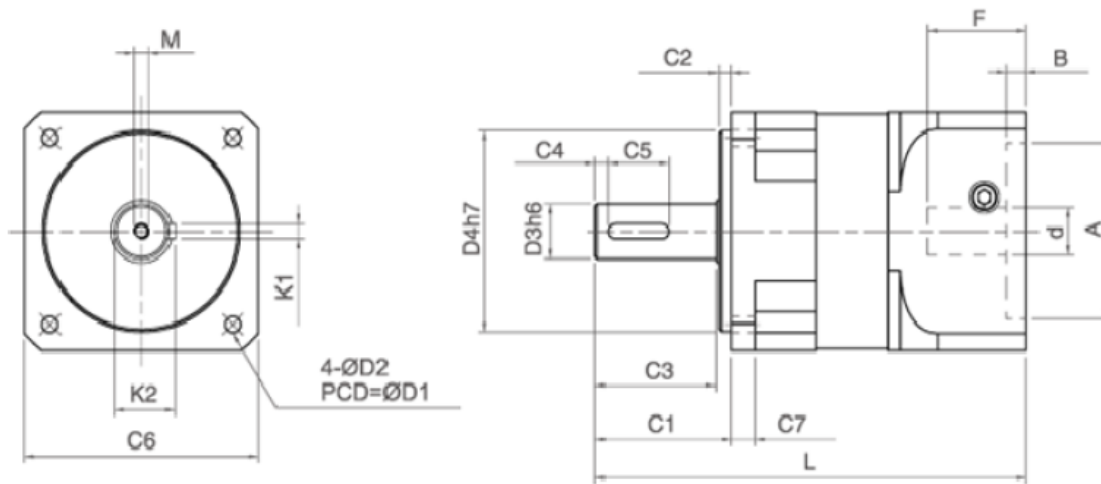


SPECIFICATIONS	STAGE	RATIO	POS042	POS060	POS080	POS090	POS120	POS150
Nominal Output Torque (N.m)	1	3	-	40	115	140	260	476
		4	35	60	135	168	306	560
		5	34	55	126	155	292	536
		7	30	50	132	166	285	520
		10	18	40	115	140	260	476
	2	12	-	40	115	140	260	476
		15	-	40	115	140	260	476
		20	34	55	126	155	292	536
		25	34	55	126	155	292	536
		28	30	50	132	166	285	530
		30	-	40	115	140	260	476
		35	30	50	132	166	285	520
		40	18	40	115	140	260	476
		50	18	40	115	140	260	476
	70	18	40	115	140	260	476	
	3	100	34	55	126	155	292	536
	Peak Output Torque (N.m)	1, 2, 3	3-100	3 Times of Nominal Output Torque				
Backlash (arc min)	1	3-10	≤10	≤10	≤10	≤10	≤10	≤10
	2	12-70	≤12	≤12	≤12	≤12	≤12	≤12
Nominal Input Speed (RPM)	1, 2	3, 4, 5	3300	3300	3000	2600	2300	2200
		7, 10	4000	4000	3000	2900	2700	2700
		12-40	4400	4400	3500	3200	3000	3000
		50	4800	4800	4000	3600	3300	3200
		70	5500	5500	4700	4200	3900	3500
Torsional Rigidity (Nm/arcmin)	1, 2, 3	3-100	5	7	8	11	27	48
Allowable Radial Force (N)			365	840	1600	6000	7500	14000
Allowable Axial Force (N)			305	605	1400	5000	6450	12000
Noise Level (dB)			65	65	64	64	64	64
Service Life (hrs.)			20,000					
Operating Temp. (°C)			-15°C~+90°C					
Protection Class			IP65					
Efficiency (%)	1	2-10	≥96%					
	2	12-70	≥94%					
Weights (kg)	1	3-10	0.4	1.3	2.3	3.5	6	16
	2	12-70	0.5	1.6	3.3	4.5	7.2	20

*Gearbox Inertia data per request.*

*Major Features & Applications: Wide frame sizes, high output torque, high allowable radial load, suitable for metal cutting machines, drilling machines, automation, bending, cutting machines, tube processing machines, grinding machines, machining center, metal forming machines, packaging machines, food machines, wood working machines, etc. Made in Taiwan.*

# POS DIMENSIONS



Unit: mm

Size	POS042	POS060	POS080	POS090	POS120	POS150
D1	50	70	90	105	130	165
D2	4.2	5.2	6.5	6.5	8.5	10.5
D3	12	16 (12~16)	20	20 (18~22)	32 (24~35)	42 (38~45)
D4	35	50	70	80	110	130
C1	24	35	56	55	58	74
C2	4	7	6	5	5	4
C3	20	27	49	49	52	67
C4	3	3	5	5	5	5
C5	12	20	25	25	40	45
C6	42	62	79	95	115	145
C7	8	9.6	16	10	19	23.5
L1	95	118	169	172.5	170.3	262
L2	109	137	194.5	198.5	198.6	314
M	M4 x P0.7 X 8	M4 x P0.7 x15	M6 XP1.0 X20	M6xP1.0x20	M8xP1.25x27	M12xP1.75x32
K1	4	5	6	6	10	12
K2	13.5	18	22.5	22.5	35.1	45
d	≤8	≤14	≤24	≤24	≤28	≤42
A	20~30	30~50	50~80	50~80	55~110	95~130
B	5	6	6	8	5	10
F	≤20	≤32	≤35	≤40	≤47.5	≤66.5