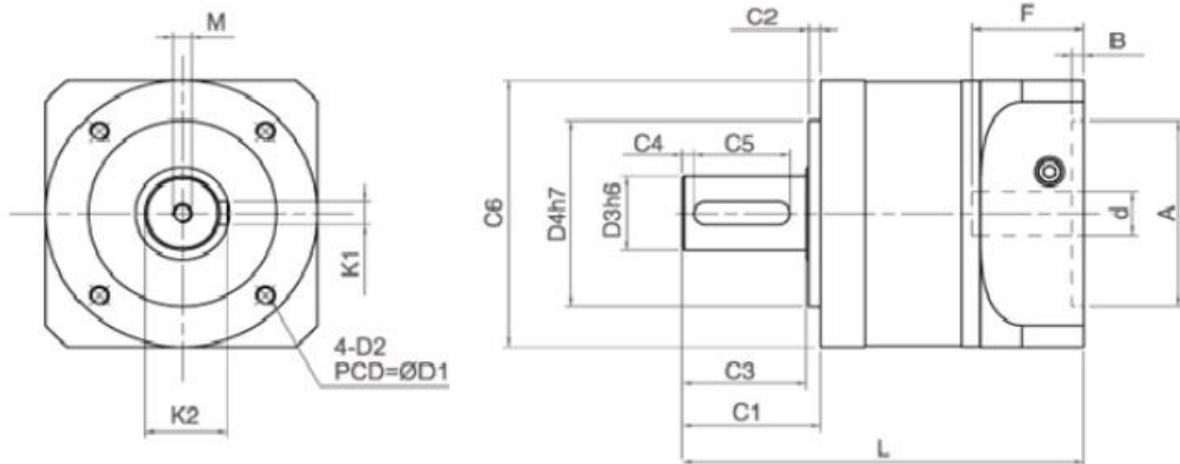


SPECIFICATIONS	STAGE	RATIO	PNO060	PNO080	PNO090	PNO120	PNO150
Nominal Output Torque (N.m)	1	3	40	115	140	260	476
		4	51	135	168	306	560
		5	47	126	155	292	536
		7	44	132	166	285	520
		10	40	115	140	260	476
	2	12	40	115	140	260	476
		15	40	115	140	260	476
		20	47	126	155	292	536
		25	47	126	155	292	536
		28	44	132	166	285	520
		30	40	115	140	260	476
		35	44	132	166	285	520
		40	40	115	140	140	476
		50	40	115	140	260	476
	70	40	115	140	260	476	
3	100	47	126	155	292	536	
Peak Output Torque (N. m)	1, 2, 3	3-100	3 Times of Nominal Output Torque				
Backlash (arc min)	1	3-10	≤10	≤10	≤10	≤10	≤10
	2	12-70	≤12	≤12	≤12	≤12	≤12
Nominal Input Speed (RPM)	1, 2	3, 4, 5	3300	3000	2600	2300	2200
		7, 10	4000	3300	2900	2700	2700
		12-40	4400	3500	3200	3000	3000
		50	4800	4000	3600	3300	3200
		70	5500	4700	4200	3900	3500
Torsional Rigidity (Nm/arcmin)	1, 2, 3	3-100	7	8	11	27	48
Allowable Radial Force (N)			750	1600	5400	7500	14000
Allowable Axial Force (N)			545	1400	4500	6450	12000
Noise Level (dB)			65	64	64	64	64
Service Life (hrs.)			20,000				
Operating Temp. (°C)			-15°C~+90°C				
Protection Class			IP65				
Efficiency (%)	1	2-10	96%				
	2	12-70	94%				
Weights (kg.)	1	3-10	1.2	2.3	3.5	6	16
	2	12-70	1.6	3.3	4.5	7.3	20

Gearbox inertia data per request.

MAJOR FEATURES & APPLICATIONS: High output torque, high allowable radial load, suitable for bending, cutting machines, tube processing machines, grinding machines, machining center, metal forming machines, packaging machines, food machines, cutting machines, etc. Made in Taiwan.

PNO DIMENSIONS



Unit: mm

Size	PNO060	PNO090	PNO120	PNO150
D1	50.0	70.0	100.0	145.0
D2	M5	M6	M8	M12
D3	16 (12~16)	20 (18~22)	32 (24~32)	48 (38~42)
D4	40.0	60.0	80.0	130.0
C1	31.0	55.0	58.0	74.0
C2	3.0	5.0	5.0	4.0
C3	27.0	49.0	52.0	67.0
C4	3.0	5.0	5.0	5.0
C5	20.0	25.0	40.0	45.0
C6	60.0	93.0	115.0	160.0
L1	118.0	172.5	170.3	262.0
L2	137.0	198.5	198.6	314.0
M	M4 x P0.7 x 15	M6 x P1.0 x 20	M8 x P1.25 x 27	M12 x P1.75 x 32
K1	5.0	6.0	10.0	12.0
K2	18.0	22.5	35.1	45.0
d	≤14	≤24	≤28	≤42
A	30~50	50~80	55~110	95~130
B	6.0	8.0	5.0	10.0
F	≤32	≤40	≤47.5	≤66.5