

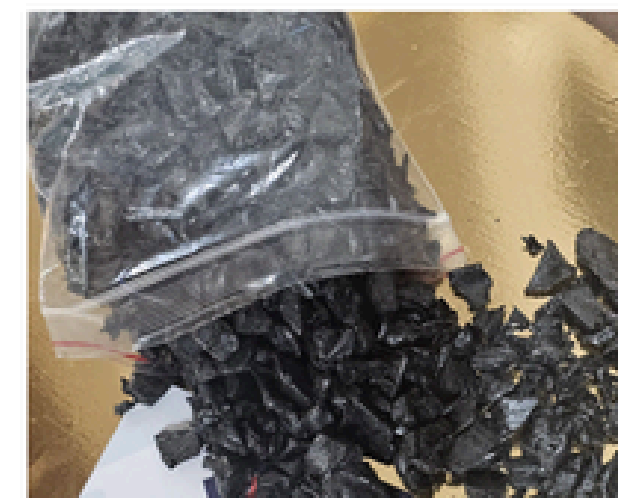
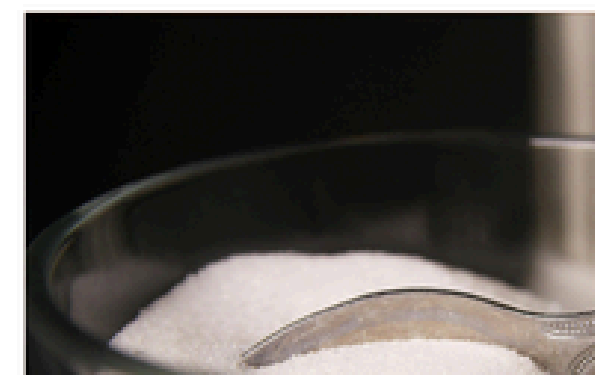
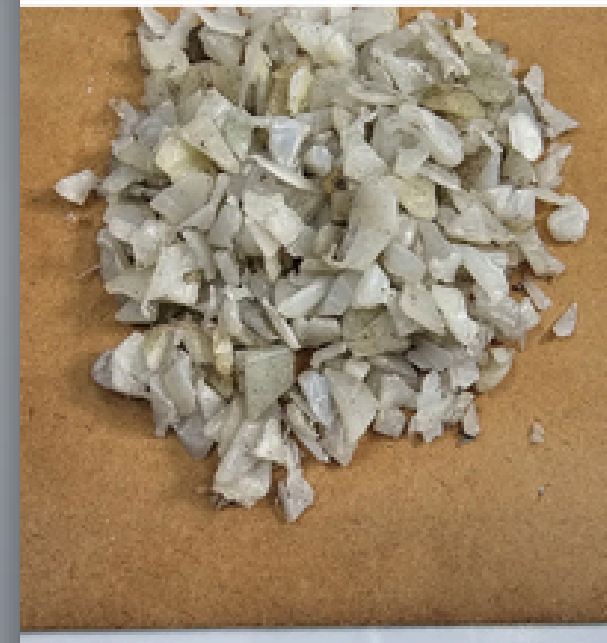


# PETROLEUM PRODUCTS MFG SOCIETY

Since 1969

# TABLE OF CONTENT

- Introduction
- Business overview
- Our milestones
- Product details Waxes
- Product details polymers
- Speciality products



# INTRODUCTION

- The Petroleum Products Mfg. Society was established in 1969 by the late Mr. G. M. Meghani.
- Based in Bhavnagar (Gujarat), India, our company is well-known for manufacturing and importing both hard and soft waxes.
- Currently, Mr. A. G. Meghani leads the company.
- Following extensive research and market analysis, leveraging reliable sources from various refineries and a substantial global network, we began importing a range of polymers tailored to meet our customers' needs.

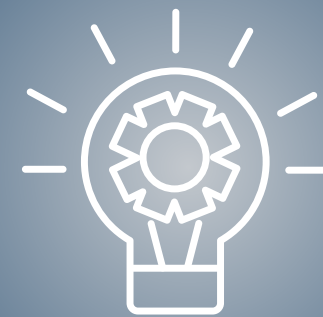




# BUSINESS OVERVIEW



Welcome to Petroleum Products Mfg. Society, your trusted partner in high-performance waxes and specialty polymers. With years of expertise and a commitment to innovation, we specialize in the manufacturing of premium-grade industrial and cosmetic waxes, as well as the import and supply of high-quality polymers tailored for diverse industrial applications.

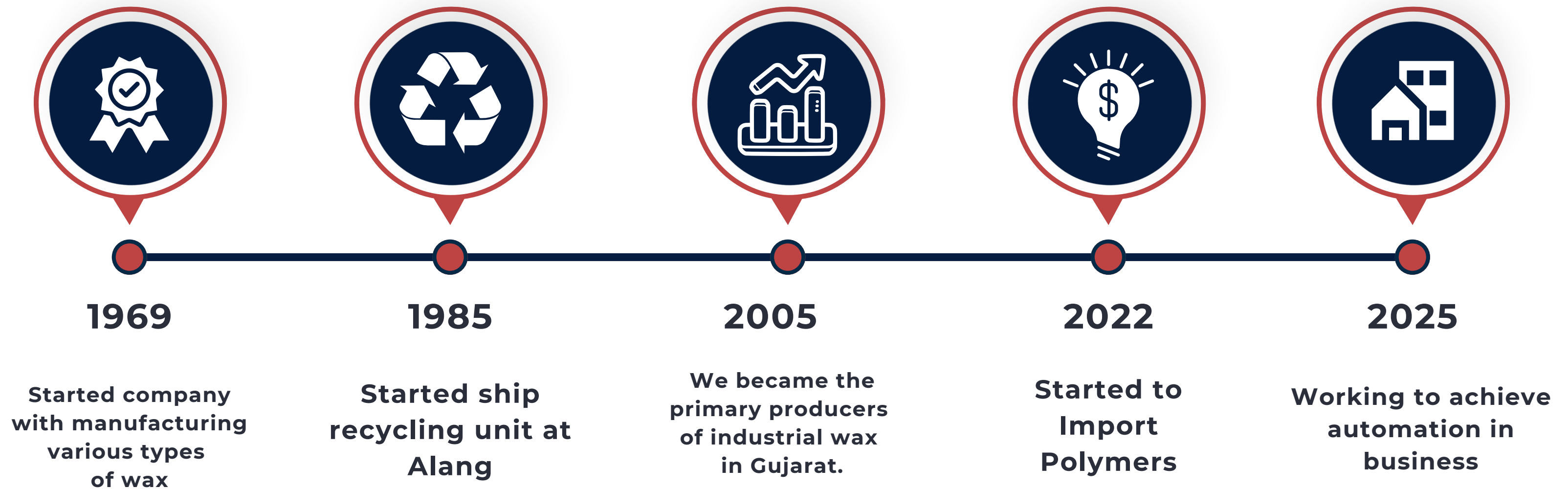


Our wide product portfolio includes Microcrystalline Wax, Paraffin Wax, Vegetable Wax, Slack Wax, and recycled-based HDPE, LDPE, and Engineering plastics - designed to meet the demanding needs of industries ranging from plastics and packaging to cosmetics, rubber, and construction.

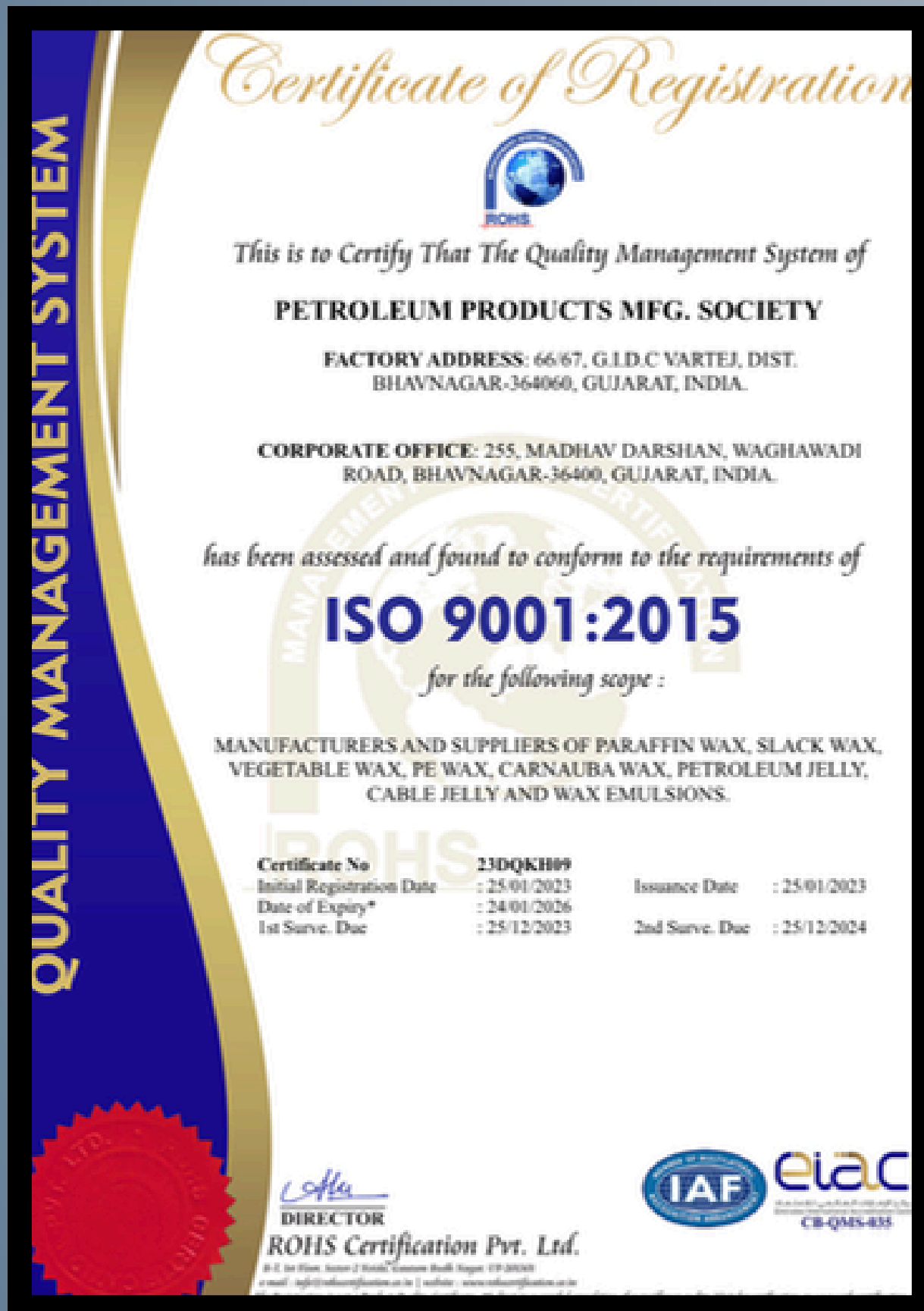


At PPMS we combine technical know-how, quality control, and customer-centric solutions to ensure timely delivery, competitive pricing, and consistent product performance. Whether you need reliable bulk supply or tailored formulations, our team is committed to delivering excellence with every shipment.

# Milestone



# CERTIFICATIONS





# **PRODUCT IMAGES AND SPECIFICATIONS**

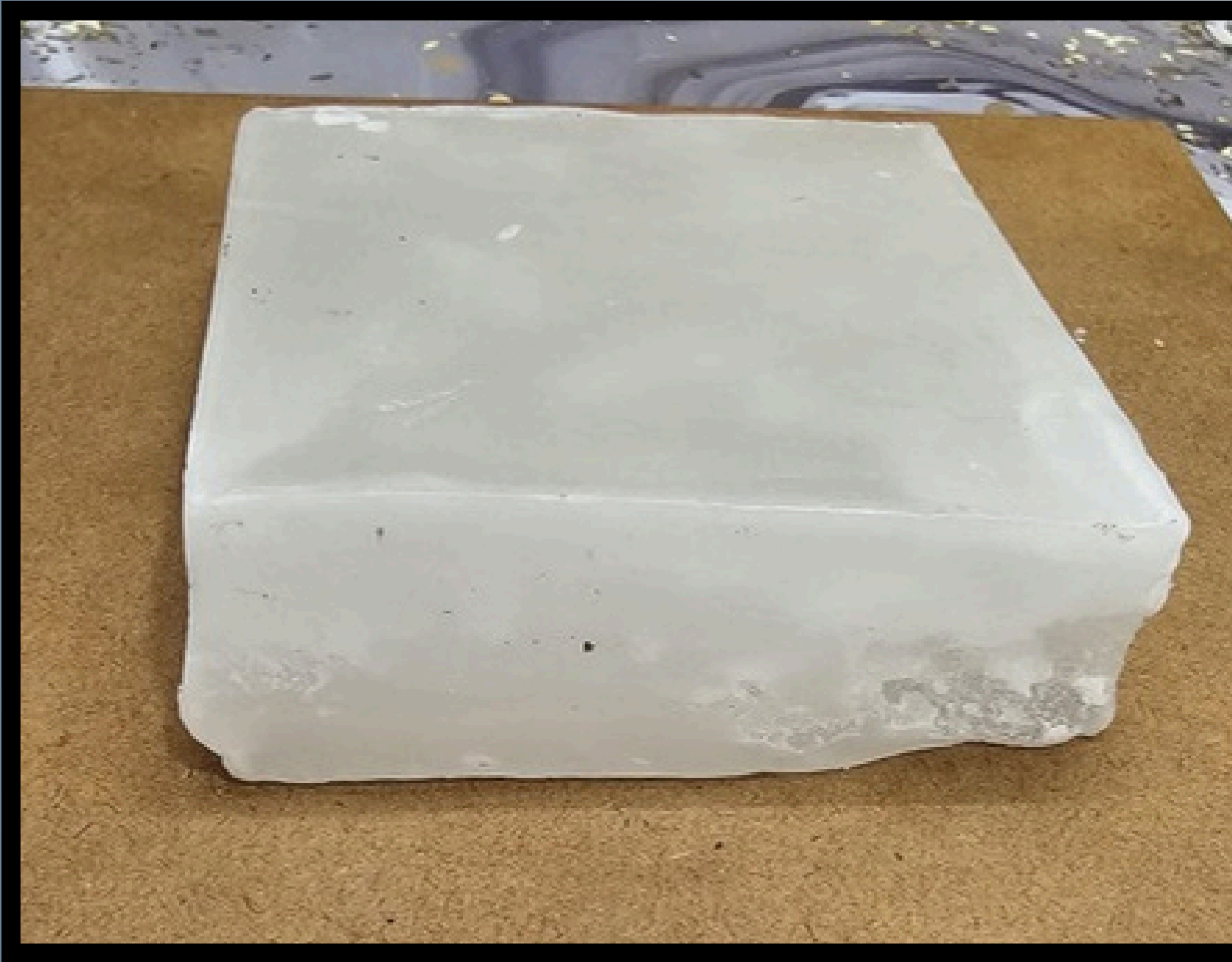
## **INDUSTRIAL & COSMETIC WAXES**

# 1. FULLY REFINED PARAFFIN WAX GRANULES



Properties	Result
Drop Melting Point	60-65°C
Congealing Point	58-60°C
Total Acidity	5 - 15
Penetration	10 mm
Flash Point	230°C
Colour	WHITE
Oil Content	0.5 – 1 %

## 2. FULLY REFINED PARAFFIN WAX SLAB



**OIL CONTENT :- 0.5**  
**MELTING POINT 58-60°C**

# 3. SEMI REFINED PARAFFIN WAX SLAB



Properties	Unit	Test Method	Result
Drop Melting Point	°C	ASTM D127-63	60
Congealing Point	°C	ASTM D938-71	58
Total Acidity (mg of KOH per gm)	Mg	IS 1448 P-2	0.5 max
Penetration	Mm	ASTM D5-73	13 – 15
Flash Point	°C	IS - 1448-P-21	195 – 210
Ash Content	%	ASTMD482-80	0.03 max
Colour	-	ASTM D-1500	0.5 – 1.5
Oil Content	%	ASTM D271 - 68	3 - 5 %

# 4. SLACK WAX



Properties	Result
Drop Melting Point	65°C- 68°C
Congealing Point	70°C
Flash Point	200°C+
Colour	1.5 - 2
Oil Content	6– 8 %

# 5. PE WAX FLAKES



Properties	Result
Drop Melting Point	105°C- 110°C
Congealing Point	95-100°C
Flash Point	180- 200°C
Colour	WHITE
Penetration	4-6 mm

## 6. PE WAX POWDER



**MELTING POINT**  
**100°C-110°C**

# 7. HYDROCARBON WAX POWDER



Properties	Result
Drop Melting Point	70 - 80°C
Congealing Point	75°C
Total Acidity	5 - 15
Penetration	20-25mm
Flash Point	280 - 300°C
Colour	5 to 7
Oil Content	10 – 15 %

# 8. V2M VEG



Properties	Result
Drop Melting Point	50 - 55°C
Congealing Point	42°C - 46°C
Odour	Slight Fatty
Penetration	20-25mm
Flash Point	160°C+
Colour	White to off whi
Oil Content	20% ± 10%

# 9. VEGETABLE INDIAN WAX



Properties	Result
Drop Melting Point	55°C - 57°C
Congealing Point	45°C - 50°C
Penetration	18 - 22mm
Flash Point	180°C+
Colour	Off white
Oil Content	20% ± 10%

# 10. MICROWAX IPR 30



Properties	Result
Drop Melting Point	65 - 75°C
Congealing Point	58 - 60°C
Penetration	22-24 mm
Flash Point	200°C
Colour	2

# 11. MICRO 111



Properties	Result
Drop Melting Point	80°C - 85°C
Congealing Point	75°C - 80°C
Colour	White
Penetration	5 – 8mm

# 12. MICRO 222



Properties	Result
Drop Melting Point	74°C -76°C
Congealing Point	66°C -68°C
Colour	1-1.5
Flash Point	200
Penetration	20

# 13. MICRO WAX SUPER PRIME



Properties	Result
Drop Melting Point	70°C - 72°C
Congealing Point	62°C - 64°C
Colour	1.50 - 2
Flash Point	200
Penetration	23 mm

# 14. MICROWAX 2308



Properties	Result
Drop Melting Point	82°C - 85°C
Congealing Point	72 – 75°C
Colour	2
Flash Point	220-230°C
Penetration	15-18

# 15. MICROWAX B2



Properties	Result
Drop Melting Point	84 - 86°C
Congealing Point	80°C - 82°C
Colour	0.5
Viscosity	5 – 10 CST
Flash Point	190
Penetration	17 mm

# 16. CARNAUBA WAX



Properties	Result
Drop Melting Point	80°C - 86°C
Moisture	1 – 0 % Max
Colour	83
Acid Value	6.52 mg



# **PRODUCT IMAGES AND SPECIFICATIONS**

## **POLYMERS & ENGINEERING PLASTICS**

# 1.HDPE PE 100 REGRIND



<b>MFI</b>	<b>0.2 – 0.3</b>
<b>APPLICATION</b>	<b>PIPE</b>
<b>GRADE</b>	<b>EXTRUSION</b>

# 2. HDPE CRATE REGRIND



**MFI**

**6.0 to 7.0**

**APPLICATION**

**CRATE**

**GRADE**

**INJECTION**

# 3. HDPE BLOW GRANULES



MFI	0.15 – 0.18
APPLICATION	DRUMS/ PIPES/ JERRY CANS
GRADE	BLOW

# 6. HDPE PIPE GRANULES



<b>MFI</b>	<b>0.25 – 0.45</b>
<b>APPLICATION</b>	<b>PIPE PE 100</b>
<b>GRADE</b>	<b>EXTRUSION</b>

# 7. IBC REGRIND



<b>MFI</b>	<b>0.15</b>
<b>APPLICATION</b>	<b>PIPE</b>
<b>GRADE</b>	<b>EXTRUSION</b>

# 8. PPCP REGRIND



**MFI**

**6 Oct 2025**

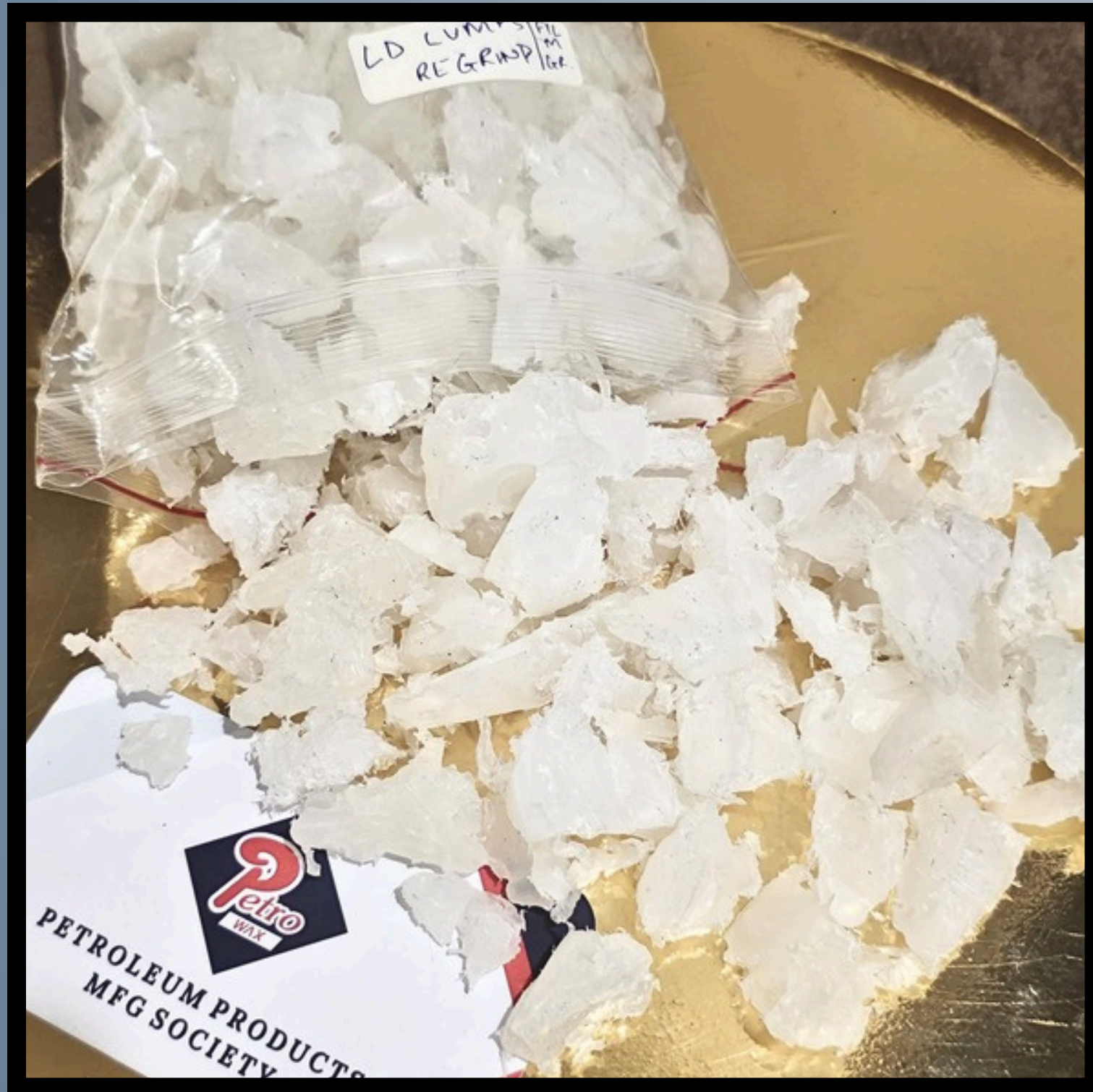
**APPLICATION**

**BATTERY**

**GRADE**

**BATTERY**

# 9. LDPE LUMPS REGRIND



**MFI**

**0.5 – 2.0**

**APPLICATION**

**GRADE**

**FILM**

# 10. LDPE REPROCESSED GRANULES



<b>MFI</b>	<b>1.0 – 2.0</b>
<b>APPLICATION</b>	<b>CARRY BAG, FILM</b>
<b>GRADE</b>	<b>FILM</b>

# 11. ABS REPROCESSED GRANULES



IZODE IMPACT	8
APPLICATION	ARTICLES
GRADE	INJECTION



# **PRODUCT IMAGES AND SPECIFICATIONS**

## **SPECIALITY PRODUCTS**

# 1. INDUSTRIAL JELLY



# 2. PETROLEUM JELLY



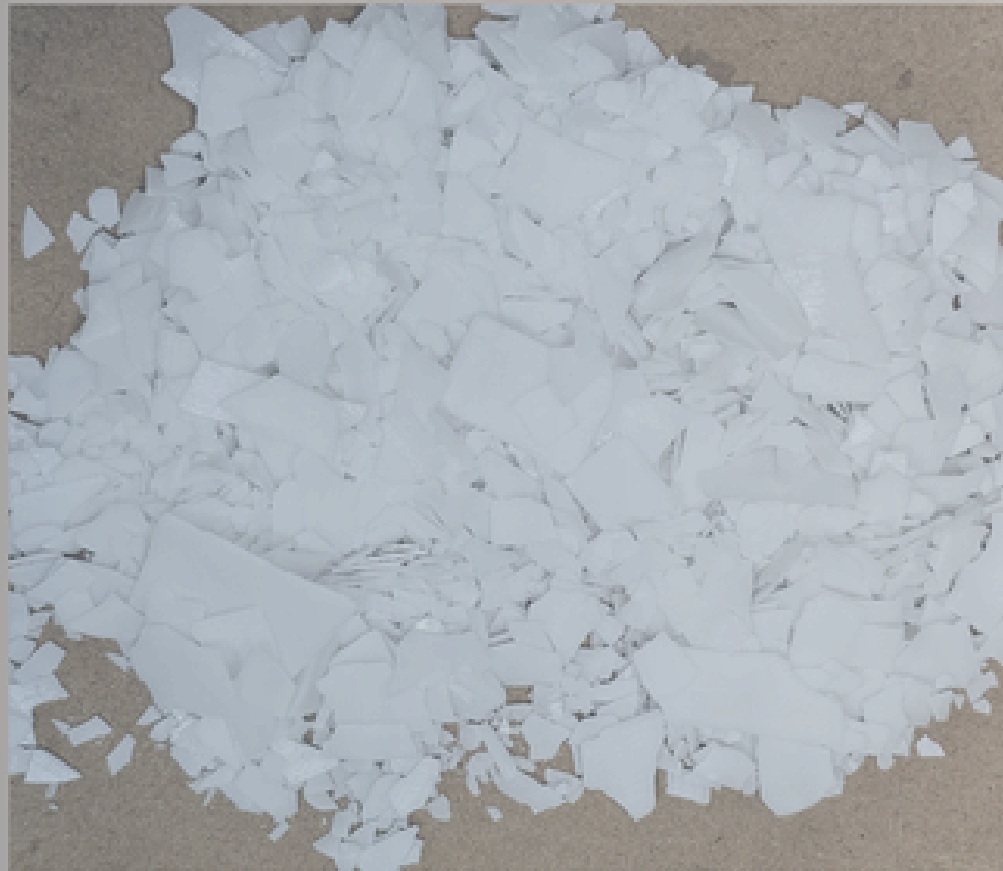
# 3. LINEAR ALPHA OLEFINS



Properties	Result
Drop Melting Point	30- 35°C
Viscosity	3.15 CP
Boiling Point	320-395°C
Density	765.8 KG/M <sup>3</sup>
Flash Point	180 - 200°C
Colour	White

# 4. EMULSIONS





PRODUCTS



# THANKYOU FOR VISITING

[www.microwax.in](http://www.microwax.in)