

METAL BEAM

CRASH BARRIER



ELECTRO POLES PRODUCTS PVT. LTD.

AN ISO 9001 : 2015 CERTIFIED COMPANY

W Beam

These Beams are widely used for Safety and Durability for Roadway Protection.

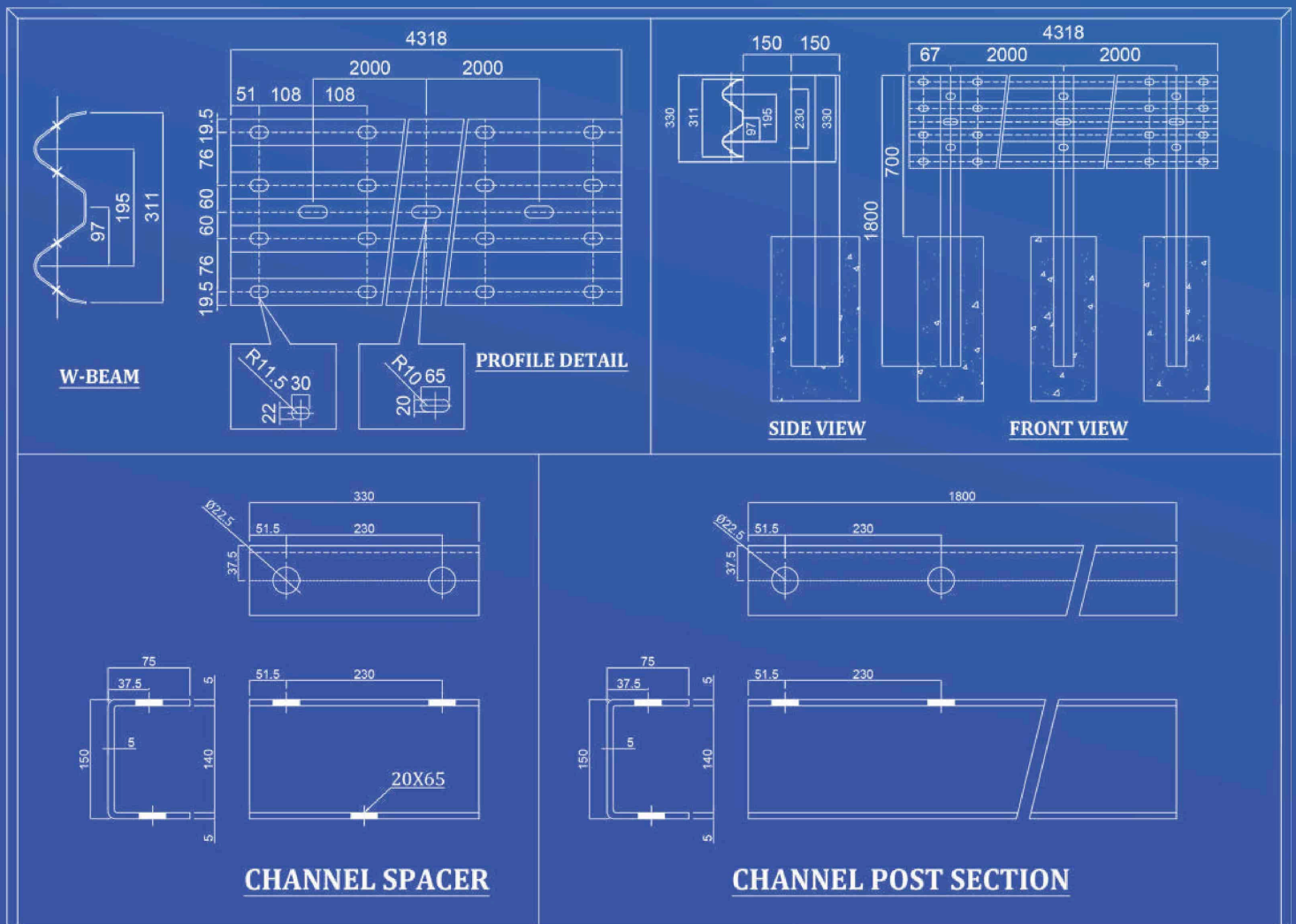
Our product, W-Beam Guardrails are engineered to provide reliable and robust protection on roadways, ensuring the safety of drivers and pedestrians alike. Designed to absorb impact and reduce the severity of accidents, these guardrails are a vital component of road safety infrastructure.

Key Features:

- **W-shaped Profile Two-wave:** Manufactured from premium-grade steel, our W-Beam Guardrails offer exceptional strength and durability, capable of withstanding high impact forces.
- **Durable materials:** Galvanized or coated to resist corrosion and environmental wear, ensuring long lasting performance even in harsh conditions.
- **Impact Absorption:** The unique W-shape is designed to absorb and dissipate Impact energy, reducing the risk of injury and vehicle damage in the event of a collision.
- **Easy Installation & Maintenance:** Modular Design, Easily adaptable to various road layouts and conditions, with components that can be quickly installed, replaced, or extended as needed.
- **Vehicle Re direction** Compliance with Safety Standards, Our W-Beam Guardrails meet or exceed national and international road safety standards, providing peace of mind that your project is protected by the best.
- **Customizable Option:** We are providing in different lengths, heights, and finishes to suit specific project requirements and aesthetic preferences.

Applications:

- Highways and expressways.
- Road Curves & Turns.
- Bridges Approaches.
- Steep slopes & Embankments.
- Road side Hazards.
- Parking lots and industrial areas.
- Work Zones.
- Urban & Rural Roads.



Thrie Beam

These Beams are widely used for Enhanced Road Safety with Superior Impact Resistance

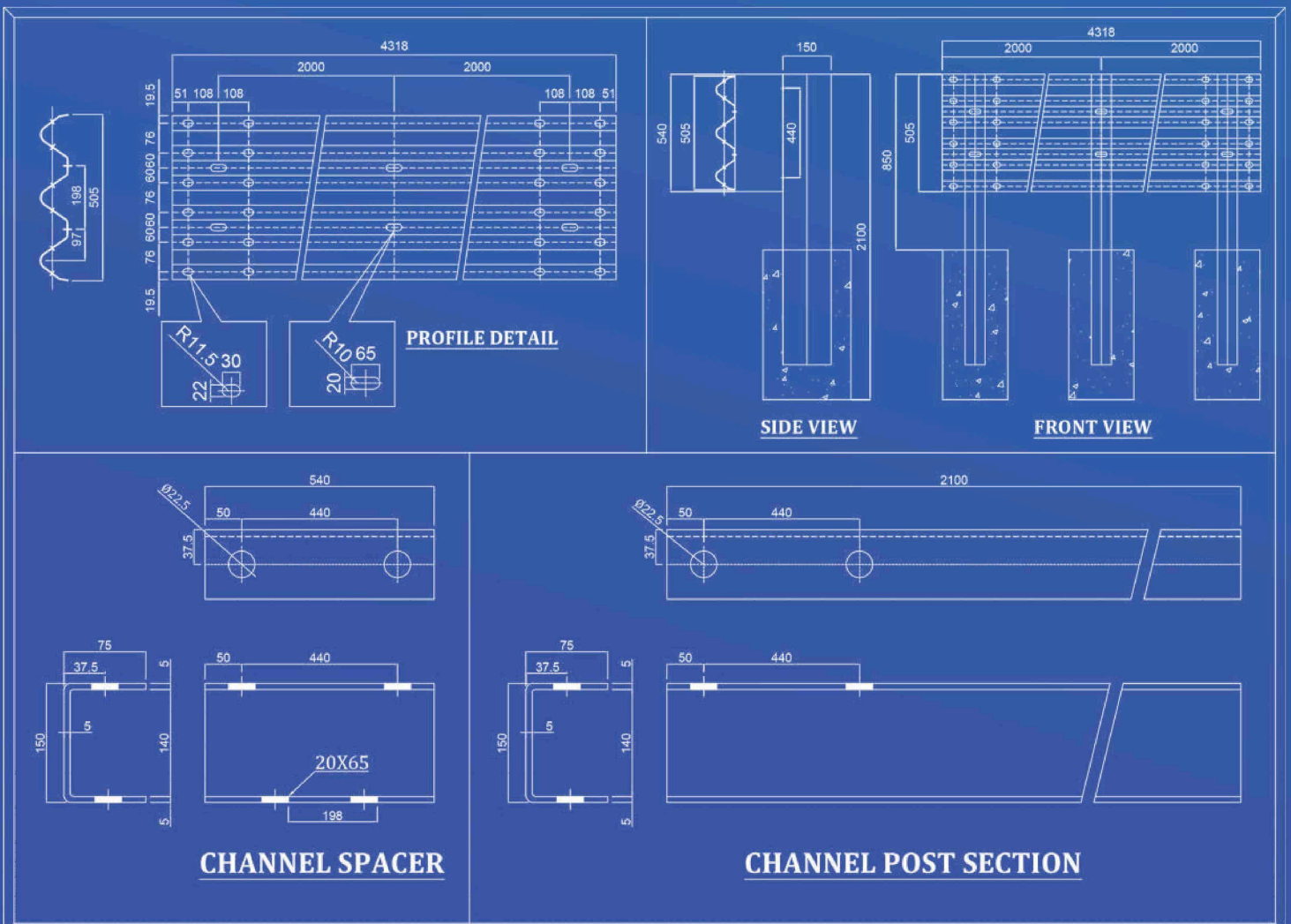
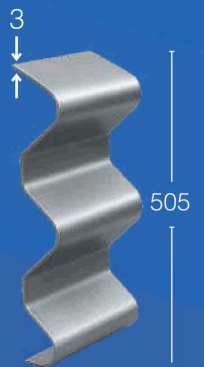
Our Product of Thrie Beam Guardrails are designed to provide enhanced safety on roadways, It is designed to absorb the Impact resistance and protection. With their distinctive three-wave shape, these guardrails offer greater strength and coverage compared to traditional.

Key Features:

- **Triple-Wave Profile Design:** Enhanced surface area offers superior impact absorption and reduces vehicle penetration.
- **Durable material:** Made from high-grade steel to withstand extreme impacts.
- **Steel Durable Galvanised:** Corrosion Protection, Galvanized or coated finishes ensure long-term durability to withstand extreme environmental conditions.
- **Modular system Design:** This is easy to Install, Adapts to straights, curves, and slopes with modular.
- **Certified Safety:** Exceeds national and international road safety standards.
- **Custom Options:** Available in various lengths, heights, and finishes to meet project needs.

Applications:

- High speed. Highways and expressways.
- Bridge approaches & Bridge Rails.
- Steep Embankment & slopes.
- Shape Curves and turns on roadways.
- Roadside Hazards Protection.
- High-risk or accident-prone areas.
- Median Barriers.
- Industrial Zones & work Zones.
- Urban Area & Parking areas.



Electro Poles Products Pvt. Ltd.(EPPPL) was incorporated in the year 2007.

Welcome to Electro Poles, where Innovation meets excellence. Established in 2007 and we have been at the forefront of Poles, Masts and Crash Barrier manufacturer & exporter with a commitment to delivering top-notch products and services.

Mission: At Electro Poles our mission is to conserve resources and improve life, finding ways to make innovation and technology beneficial in the real world.

Core Values

Integrity

Innovation

Customer Satisfaction

Sustainability

Our Story

Founded by Late Shri Manick Chand Agarwal in 2007, having experience in same industry since 1985. Electro Poles began with a vision to be the industry benchmark across all verticals, by creating value and demonstrating high ethical standards. Over the years, we have evolved into a 650 million company with a strong presence in India, South Asia, Middle East & African Region.

Why Choose Electro Poles

Quality Assurance: Rigorous quality control measures ensure the reliability and longevity of our products/services.

Innovation: We stay ahead of the curve by embracing the latest technologies and trends in Lighting & Transmission Poles manufacturing.

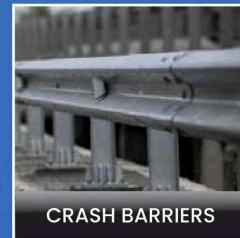
Customer-Centric Approach: Your satisfaction is our priority. Our customer service team is dedicated to providing a seamless experience.

Sustainability Initiatives

As stewards of the environment, Electro Poles is committed to sustainable practices.

Our manufacturing products

- | | |
|-------------------------------|----------------------|
| 1. Metal Beam Crash Barrier | 5. Flag Mast Pole |
| 2. Steel Tubular Poles | 6. Stadium Mast Pole |
| 3. Polygonal & Octagonal Pole | 7. Mono Pole |
| 4. High Mast Pole | |



CRASH BARRIERS



STEEL TUBULAR POLE



OCTAGONAL POLES



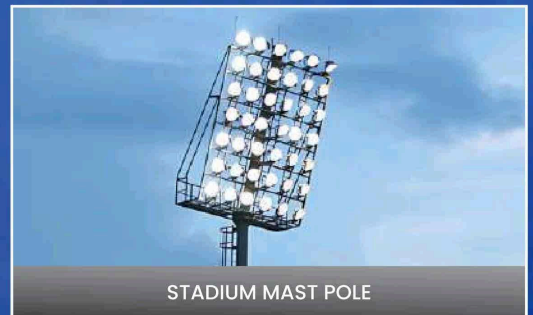
MONO POLES



FLAG MAST



HIGH MAST POLES



STADIUM MAST POLE

Registered Office

1-B, Ramlochan Mullick Street, 1st Floor, Room No.105, Kolkata - 700073, West Bengal, India.

Marketing Office

Ecosuite Business Tower, Plot II - D/22 Action Area II 6th Floor, Suite No: 607, (Near City Centre II), Kolkata - 700156, West Bengal, India.

Phone No : +919874245900, +919903915900
+919874245834, +919874245105

Factory Unit 1

Santra para, Village : Kharial, P.O. Dankuni Coal Complex, Hooghly, Pincode - 712310 (W.B.)

Factory Unit 2

Mother Dairy Gate No.3, Vill : Kharial, P.O.Dankuni Coal Complex, Dankuni, Hooghly, Pincode - 712310 (W.B.)



Email : info@electrogroups.com
Web : www.electropoles.in

Scan to know more

