



CE

CONTENTS

ICU BED	01
FOWLER BED	02
SEMI- FOWLER BED	03
PLAIN BED	04
MEDICAL TROLLEYS	05-08
PATIENT HANDLING EQUIPMENTS	09-10
GYNAE TABLES	11
OPD FURNITURES	12-13
WARD FURNITURES	14-16
MEDICAL FURNITURES	17-18
SURGICAL HOLLOWARES	19
STERILIZATION EQUIPMENT	20-21
SUCTION MACHINE	22-23
ACCESSORIES	24



ICU BED- PRIMO (Electric)

Description :

Advance Linear Actuator system 04 Pcs Motor, 01 Pc Control Box, 01 Pc Handset.

Four Pieces individual side rails, ABS Moulded.

ABS Moulded Head and Foot panel with locking and corner buffer.

Frame work made of Rectangular M.S. Tube.

4 section top made up of Oval perforated CRCA MS Sheet.

Bed Mounted on 5" Dia Castor.

Holder for Urine bag.

S.S. Telescopic IV Rod with 4 Locations

Overall Approx Size: 2090L x 910W x 460-700H MM.

Finish: Pretreated & Epoxy Powder Coated

Positions obtained by hand Remote :

Hi-Low

Backrest elevation

Kneerest elevation

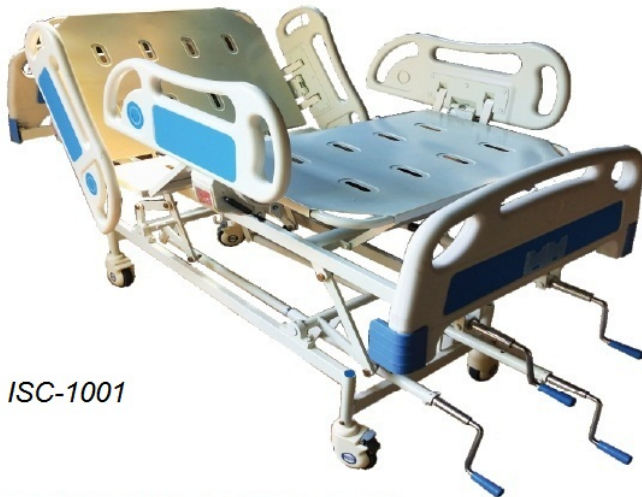
Trendlenburg / Reverse trendlenburg



ISC-1002



ICU BED- ROYAL (Manual)



ISC-1001



These are offered with the hi-low trendelenburg and head & leg side adjustments.

Specifications:

- Size: 2250 mm L X 1015 mm W X 625 / 820 mm H
- Mattress size: 2010 mm L X 910 mm W four perforated top section

Features:

- Head & leg side adjustments (Head side 90° up & Leg side 60° up)
- A set of imported split rails
- Hi-low 625 mm to 900 mm
- SS I.V. rod with four location
- SS/ABS head and leg bows fitted
- Four swivel castor 150 mm dia, two with brakes
- Finish with Epoxy Powder coated

ICU BED- DELUX (Manual)

OVERALL SIZE: 2300mm L X 1050mm W X 550mm-800mm H (Adjustable)

SUITABLE SIZE FOR MATTRESS: 1980mm L X 890mm W

- Four section perforated CRCA sheet top.

- Backrest, Knee rest, Trendelenburg, Reverse Trendelenburg &

Height Adjustable operated by screw and lever mechanism with four separated S.S. folding handles.

- ABS head & Leg Bow.
- A pair of new design collapsible railing.
- Four heavy duty swivel castors (two with brake).
- Saline rod.
- Pretreated and epoxy powder coated.



ISC-1007



FOWLER BED



ISC-1010

Description :

- ABS molded Head and Foot panel with locking and corner buffer.
- A pair of New Design Collapsible Side railings (1320mm long).
- Frame work made of Rectangular M.S. Tube
- Four section top made up of Oval perforated CRCA MS Sheet.
- Bed Mounted on 4" Dia Castor. 2 with brakes.
- Four Location for IV Rod.
- Overall Approx Size: 2200mm L x 1050mm W x 610 mm H.
- Finish: Pretreated & Epoxy Powder Coated
- Positions obtained by Screw & Lever mechanism with S.S. foldable handles:

- 1.Backrest elevation
- 2.Kneerest elevation

FOWLER BED



ISC-1012

Specifications:

- Approx: 2070 mm L X 910 mm W X 600 mm H
- Mattress size : 2010 mm LX 910 mm W Four section perforated top

Features:

- SS head & leg bows with laminated panels
- "D" type railing both side (drop side rails)
- SS I.V. rod with four location
- Four swivel castor 100 mm dia (two with brakes)
- Pre treated and epoxy powder coated
- Optional accessories at extra cost.
- Saline rod SS/MS

FOWLER BEDS

Description :

- Advance Linear Actuator system 02 Pcs Motor, 01 Pc Control Box, 01 Pc Handset.
- Four Pieces individual side rails, ABS Moulded.
- ABS Moulded Head and Foot panel with locking and corner buffer.
- Frame work made of Rectangular M.S. Tube.
- 4 section top made up of Oval perforated CRCA MS Sheet.
- Bed Mounted on 5" Dia Castor.
- Holder for Urine bag.
- S.S. Telescopic IV Rod with 4 Locations
- Overall Approx Size: 2090L x 910W x 460-700H MM.
- Finish: Pretreated & Epoxy Powder Coated
- Positions obtained by hand Remote :
- Backrest elevation Kneerest elevation

FOWLER BED



ISC-1011

Description :

- ABS molded Head and Foot panel with locking and corner buffer.
- A set of 4 ABS split rails for royal look
- Frame work made of Rectangular M.S. Tube
- Four section top made up of Oval perforated CRCA MS Sheet.
- Bed Mounted on 4" Dia Castor. 2 with brakes.
- Four Location for IV Rod.
- Overall Approx Size: 2200mm L x 1050mm W x 610 mm H.
- Finish: Pretreated & Epoxy Powder Coated
- Positions obtained by Screw & Lever mechanism with S.S. foldable handles:

- 1.Backrest elevation
- 2.Kneerest elevation

FOWLER BED



ISC-1014

SEMI-FOWLER BEDS

SEMI-FOWLER BED (SFB- ELECTRIC)



ISC-1015

Description :
Advance Linear Actuator system 01 Pcs Motor, 01 Pc Control Box,
ABS Moulded Head and Foot panel.
Frame work made of Rectangular M.S. Tube.
2 section top made up of Oval perforated CRCA MS Sheet.
Holder for Urine bag.
S.S. Telescopic IV Rod with 4 Locations
Overall Approx Size: 2090L x 910W x 460-700H MM.
Finish: Pretreated & Epoxy Powder Coated
Positions obtained by hand Remote :
Backrest elevation

SEMI- FOWLER BED

OVERALL SIZE: 2200mm L X 1050mm W X 610mm H

- Two section perforated CRCA sheet top
- Polymer moulded Head & Leg Bows
- A pair of New design collapsible railings
- Four heavy duty castors 100mm dia (two with brake)
- Two locations for IV rod
- Pre treated and Epoxy powder coated
- Optional Accessories At extra cost:
Saline rod MS/SS



ISC-1016

Overall Size: 2200mm L X 1050mm W X 610mm H

- Perforated CRCA sheet top
- Manually operated six position backrest
- 32mm dia SS Head & Leg Bows
- Two locations for IV rod
- Pretreated and Epoxy Powder coated.

Optional Accessories at extra cost:

Castors set of four(two with brake),Saline rod,A pair of side rails
Coloured laminated bow panel.

SEMI-FOWLER BED



ISC-1018

Optional Head & Leg Bows

Description:

1. Frame work made of angular M.S tube.
2. Top made of CRCA 18/20G Sheet
3. Tubular Head & Foot bows of unequal height.
4. Overall Size: 72L X 35W X 24H inch.
5. Finish: Epoxy Powder Coated
6. MS Cradle made of 5mm bar easily detachable can be attached to the bed.
7. Provided Mattress inside the cradle.

Optional: MS side railings, IV rod, Wheels & Mattress.

SEMI- FOWLER BED



ISC-1019

Optional Head & Leg Bows

Plain Bed



Size: 1900mm x900mm x550mm H
 Plain bed uniformly perforated.
 1 Section top in 20 swg CRCA sheet.
 Easily detachable SS Head and Foot end bows.
 Foot Stumps at Every Four Legs.

Size: 1900mm x900mm x550mm H
 Plain bed uniformly perforated.
 1 Section top in 20 swg CRCA sheet.
 Easily detachable polymer Head and Foot end bows.
 Urine hooks below the bed on either sides.
 100 mm Diagonally locking Castors.
 I.V. position at all the four corners of the Bed.

Plain Bed



Plain Bed



Description :

Overall size : 180L X 60W X 46H cms.
 Framework Made-up of Rectangular /Square M.S Tubes.
 5cm foam padded fixed mattress covered with rexine
 Legs fitted with PVC Stumps.
 Finish : Pretreated & Epoxy Powder Coated.

Specifications:

- Sizes: 1980 mm L X 910 mm W X 610 mm
- Mattress size: 1910 mm L X 900 mm W

Features:

- Fixed type bed
- Mosquito pole arrangement
- Mounted on rubber shoe
- Finish with paint
- Vertical support

Attendant Bed



Description :

Frame work made of rectangular M.S tube.
 Fitted with perforated CRCA sheet top
 SS/MS tubular Head & Foot Bows.
 Legs fitted with PVC stamps.
 Overall Size : 167L X 60W X 40H cms.
 Epoxy Powder Coated.

Attendant Bed



Instrument Trolley



ISC-1054

Features:

- MS/SS frame work
 - MS/SS rod for railing
 - Wholly SS/SS Top
 - Mounted on 50 mm/100 mm D.B. Castor
 - Finish with heavy polish/paint
- Available Sizes- 30"x18"x32"
36"x24"x32"

- Wholly Made of Stainless Steel/MS Powder Coated.
- Two S.S. Shelves, Covered with Three Sides Rails
- Provided with S.S. Bowls & Bucket
- Mounted on Four 50mm/ 100 mm.

Dressing Trolley



ISC-1052

Medicine Trolley



ISC-1053

SPECIFICATIONS:

Size: 660mm L X 457mm W X 812mm H

Full Stainless Steel frame

Stainless Steel Two Drawer Vertical Trolley with rails

100mm grey rubber castors.

Frame work of MS Tubular/Square pipe.
Mounted on 10cms castors,
Two SS shelves with guard railing on both shelves
Two MS drawers under the each shelf.
Pretreated and epoxy powder coated.

Medicine Trolley (4 Drawers)



ISC-1053

Medicine/Drug Trolley



Description :

SS frame work
SS shelves.
6 Modular Drawers.
1 SS Drawer at the bottom.
100mm imported castors.

Description :

Size-H36 inch X 40 inch.
Main frame built in argon welded 16G SS pipe.
4" PVC swivel castors and zinc finish.
Unit made from 304/202 Grade Stainless Steel.

Service Trolley



Utility Trolley



Description :

M.S frame work
S.S shelves
One M.S Drawer
100mm castors.

SPECIFICATIONS:

Size: 810mm L X 355mm W

Height: Adjustable 810mm to 1110mm

Features:

- MS/SS square and round construction
- Top tray SS (quality of '304')
- Mounted on 50 mm D.B. Castor
- Finish with paint or high quality polish

Mayo Trolley



Suture Trolley



Product description:

1. Body made of MS/SS CRCA Sheet 20 gauge
2. 4 anti rust wheels of 5" diameter provided
3. Push handle provided
4. 20 molded medicine racks provided
5. SS Shelf provided
6. Powder coated finish/polish finish

ABS body,
metal ball bearing rail
A-Aluminium columns
B-Plastic-steel columns.
IV Pole,needle disposal holder(optional);
Dust basket,utility container,file bag,multi bin container,sliding side shelf,
stainless steel guard rail,concave top covered with transparent soft plastic glass,
centralized lock,2 small & 3 big drawer,inner with partitions can be well organized.
Drawers responsitioned easily.

Luxurious Size : 850 X 520 X 950 mm

Anaesthesia Trolley



Crash Cart Suture Trolley



Product description:

1. Body made of MS/SS CRCA Sheet 20 gauge
2. 4 anti rust wheels of 4" diameter provided
3. 2 SS trays
4. 12 molded plastic bins
5. SS Shelf provided
6. Powder coated finish/polish finish

Optional: Provision For More Bins At Extra Cost

Crash Cart Trolley



ISC-1063

Description :

Overall Approx. Size : 940mm LX490mm WX1535mm H.
M.S/ SS tubular frame.
Six removable plastic bins and
two polystyrene lockable storage units with three drawers each.
Four swivel Castors, 100mm dia. (Two with Brakes.)
Complete with corner bluffers,
oxygen cylinder holder, S.S IV Rod, S.S Top and electric lamp.
Epoxy Powder Coated.

OVERALL SIZE:

800mm L X 600 mm D X 1400H

SPECIFICATIONS:

4 Shelf one drawer.

Trolley having two handle

The trolley mounted on 125 mm dia. Castor two with brakes.

Switch & socket for medical equipment

Supplied with ss I.V. Rod and M.S O2 cylinder cage

Finish: Pretreated & epoxy powder coated paint.

Available with Keyboard Tray And Extra Shelves at Extra Cost.

Laparoscopy Trolley



ISC-1055

ECG Trolley



Product description:

Size : W 22" x D 18" x H 30"
100mm Dia. castors and Cable Hange
1 ss top tray, bottom MS tray
Pre-treated & Epoxy powder coated
Available in Stainless Steel /
Powder coated frame with S.S. top.



Product description:

Size : W 355mm x D 480mm x H 665mm
4 trays, 50/100mm Dia. castors and Cable Hanger
Pre-treated & Epoxy powder coated
Available in Stainless Steel /
Powder coated frame with S.S. top.

Swab Rack Trolley



Full SS trolley with eight tubular rows with hooks.
Removable drip tray at the bottom
Mounted on four swivel castors, two with locks.
Overall Dimension 762 L x 508 W x 1524 H

Stretcher Trolley



ISC-1038

Specifications:

·Size: 1980 mm L X 560 mm W X 820 mm H

Features:

- MS/SS tubular frame work
- Top MS/SS quality of '304'
- Saline stand (SS rod) arrangement
- Swivel castor 100 mm or 125 mm D. B. castor
- Finish with powder coated paint/polish

Available in Full Stainless Steel, Full MS & MS Body With SS Top.

Also available in complete stainless steel

Description :

Overall Approx Size : 180L X 56W X 81h cms.
Frame work made of Tubular M.S Pipe with S.S handle
Swing Away type Safety Side Railing
Adjustable I.V Road, Utility Tray, Cylinder Cage Foam Padded to
Trolley mount on 125mm Dia castors-Two with Brakes
Finish : Pretreated & Epoxy Powder Coated

Patient Trolley



ISC-1039

Emergency & Recovery Trolley



ISC-1031

Adjustment facility of Height, Back Section , Trendelenburg /Reverse
Hydraulic pump and gas spring assisted movement.
X-Ray permeable top with x-ray cassette holder
Drop side railing and safety belts, IV rod, oxygen cage and utility tray
Removable stretcher mounted on individual locking castors
Overall Dimension 2136L x 610 W x 635~890 H

Stretcher Trolley Delux



ISC-1037

Specifications:

·Size: 1980 mm L X 560 mm W X 820 mm H

Features:

- MS tubular frame work
- Top SS quality of '304'
- Saline Rod, Utility Tray, Oxygen Case, Safety Rails.
- Swivel castor 100 mm or 125 mm D. B. castor
- Finish with powder coated paint/polish

Available in Full Stainless Steel.

Ambulance Stretcher



ISC-1040

Description :

Light weight, strong structure, lovely design. Good art and crafts, easy antiseptic, small size, convenient to use. Utilizes high precision mechanical transmission. Can be used automatically folded through the left and right hand control handle tubes. Made of high quality aluminium alloy tubes. Dimensions : A - High Position : 1900 X 560 X 900mm
B - Low position : 1900 X 560 X 280 mm
Load Weight : up to 120 kg. Product weight : 40 kg.
Diameter of the castors : 125 mm.
Applicable for various kind of hospitals, emergency centers, ambulances and battle fields

Description :

Product Size (LXWXH) : 210 X 60 X 11 cm.
Net Weight : 6 kg
Dimension of the packing box : 60 X 58 X 25 cm. (5 Pcs./Box)
Gross Weight : 32 Kg
Available in 2 Fold & 4 Fold.

Fold Stretcher

ISC-1044



2 Fold

4 Fold



ISC-1046

Scoop Stretcher



ISC-1041

It is made of high-strength aluminum alloy materials. It characterised by its being light-weighted, small-sized, easy-carried, use-safety and easy for sterilization and clean. It's seperatable-type emergency stretcher for ambulance to transfer fractured & serious patients.
Product size : 164*43*8cm(min), 201*43*8cm (max.),
Net weight : 8kg, The bearing pressure: <159kg,
Dimension of the packing box : 123*45*11cm, Gross weight : 11Kg.

The stretcher (spine board) is made of PE plastic this spine board is enduring, anti-ageing, good weight loading capacity and it is X-ray compatible as well. It comes with safety belts. It can be used with head immobile at the same time. It's mainly used for hospitals, sports, ambulance and outdoors carrying patients and wounded person.
Size :- 184 x 45 x 7 cm
loading weight 159Kgs, Net weight 7.5 kgs.

Spine Board



ISC-1042

Head Immobiliser



ISC-1043

Supports head during medical emergency/accidents. Can be fixed on spine board. Imported, made of high quality material.

Stair Stretcher



ISC-1070

This Aluminum Stair Chair is designed to transport patients through tight spaces and up or down stairs, safely and efficiently. The sturdy aluminum frame is strong enough to hold up to 150 K.G., yet surprisingly lightweight. Three adjustable straps with quick-release buckles ensure the patient's comfort and safety. Non-slip grips on the rear and front handles help rescuers.

Obstetric Labour Table



ISC-1107

Has a stainless steel top in two sections.

These are available with the self locking traction handle at the side and also has I.V. Rod & mattress.

Specifications:

·Size: 1870 mm L X 900 mm W X 800 mm H

Features:

- Three section top
- Middle section with "U" cut
- Backrest adjustment on ratchet 75° up
- Leg end section can slide under main frame
- Mechanical gear box assisted trendelenburg 30°up /54°dn
- Three side detachable SS rails
- Both side SS lithotomy or rubber padded lithotomy with belt
- Movable SS hand grips
- Finish with polish (upper part) & powder coated paint for other accessories

Labour Table (Fixed)

SIZE:

1830mm L X 690mm / 760mm W X 810mm H

FEATURES:

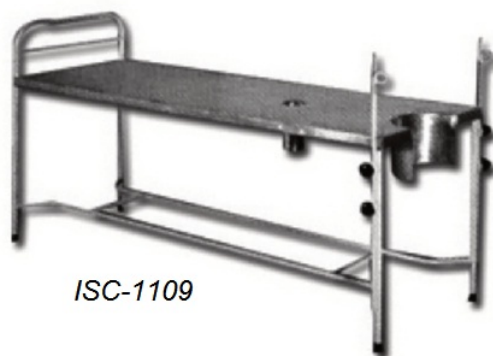
MS tubular construction. Cover with SS quality of '304'.

Leg end 'U' cut.

Lithotomy arrangement, with belt.

Finish with powder coated paint.

AVAILABLE IN FULL SS also.



ISC-1109

3 Fold O.T. Table(Gynae Cut)



Specifications:

·Size : 1880 mm L X 680 mm W X 820 mm H

Features:

- MS tubular frame work
 - Lithotomy arrangement with belt
 - Head & leg adjustment on ratchet
 - 50 mm swivel castor & rubber shoe
 - Pre treated and finish with powder coated paint
- Available in SS Top & Full SS

Labour Delivery Bed(Electric)

Description :

Overall Size: 1981mm x 965 mm (L x W) (Bed when fully extended)

Mattress Platform: 1880 mm x 660 mm (L x W)

Minimum Height: 673 mm 26.5

Maximum Height: 952 mm. 37.5

Three section top made of laminated board

User friendly handset for electrically adjustments of backrest, height and trendelenburg / Reverse trendelenburg.

Leg section can be telescoped under backrest for lithotomic positions

Easily removable ABS moulded head boards

Split away type ABS moduled safety side rail on each side can be easy lowered to aid in both routine and emergency nursing tasks

Stainless Steel bearing down supports with hand grip

A pair of upholstered lithotomic crutches mounted on stainless steel rods

125 MM Central locking castors

Stainless Steel telescopic I.V. pole

Stainless Steel Tray

Three Section mattress

All mild steel parts are pre-treated and powder coated finish



ISC-1110

Examination Table



ISC-1104

Also Available in Gyane Cut

In order to meet the particular demands of the customers, we are providing the customized Examination Table. These tables are available with the two sections and adjustable flap. These Examination Tables are manufactured using high quality material like MS steel pipe, stainless steel pipe.

Specifications:

·Overall size: 1830 mm L X 610 mm W X 760 mm H

Features:

- Head side adjustment 75° up on ratchet
- MS tubular construction
- CRCA sheet top
- Mounted on rubber shoe
- Finish with paint

Examination Couch

- Overall approx. size: 187 (L) x 51 (W) x 81 (H)
- Adjustable backrest by crank mechanism/gas spring.
- Two section foam padded, upholstered top
- Three drawers
- Three cabinets
- Tray for B. P. apparatus
- Foot Step
- Pre treated & epoxy powder coated



ISC-1102

Revolving Stools

ISC-1076



3 Legs

ISC-1071



4 Legs

ISC-1077



4 Legs (SS)

Specifications:

- Size: 304 mm dia
- Height: adjustable 457 mm to 710 mm

Features:

- MS/SS round frame work
- Rod for support
- SS Top / Full SS
- Mechanism screw for up/down adjustment
- Mounted on rubber shoe
- Finish with Powder coated paint/polish.

Foot Step



Specifications:

- Single size: 254 mm L X 225 mm W
- Double size: 254 mm L X 225 mm W X 457 mm H

Features:

- Square/round frame
- CRCA sheet top
- Rod for support
- Aluminium channels for anti-slip
- Mounted on rubber shoe
- Pretreated and epoxy powder coated finish

Attendant Stool

ISC-1073



Features:

- MS/SS round frame work
- SS Top / Full SS
- Mounted on rubber shoe
- Finish with Powder coated paint / polish.

Waiting Area Chair



3 Seater With Cushion

ISC-1139



3 Seater

Offer luxurious seating experience with maximum comfort and rest to any guests/visitors by three seater visitor chair.
Add a relaxing charm to your living room with this remarkable piece!

Made from metal, Chrome Plated.

Product Features:

- 1, When fold, it is a chair; when unfold, it is a bed;
- 2, High-quality powder coated steel frame;
- 3, Very easy to operate, useful and convenient ;

Product Specification:

- 1) Size : unfold 192cm(L)*62cm(W), fold 62(L)*72(W)*94(H);
- 2) Material:
 - A. Chair frame: Steel power coated;
 - B. Chair mattress: leather surface with sponge padded, 3cm thickness
- 3) Four wheels totally

Attendant Bed Cum Chair

ISC-1029



Blood Transfusion Chair



ISC-1028

Description :

Open size : 70X77X108 cms.
Frame work made of MS tubes
The fabric is pressed PVC artificial leather
Three angles adjustable with rotatable Arm
One side basket and one IV Rod will be provided
Finish : Epoxy Powder coated

Wheel Chair

Frame Style : Foldable, Frame Material : M.S.
Out to out width in open position (inches) : 26"
Seat Width (inches) : 18"
Total width in closing position (inches) : 9"
Rear Wheel Size : 24". Front Wheel Size : 8"
Seat to floor height (inches) : 19"
Seat Depth (inches) : 16"
Back height (inches) : 18"
Total height (inches) : 35"
Max User Weight Capacity (kgs) : 110
Net Weight (kgs) : 17.5 K.G.
Upholstery : BLACK cushion
Armrest : Fixed
Leg-rest : Fixed
Wheel Quality : SPOKE WHEEL WITH SOLID TYER



ISC-1067

Delux Locker



ISC-1049

These Deluxe Bedside Lockers are ideally placed at the bedside so that all the stored products remain within the reach.

Specifications:

- Size: 410 mm square
- Height: 810 mm

Features:

- CRCA sheets enclosed on three side having one drawer and one box
- SS top quality of '304' with raised edge on three sides
- Mounted on 50 mm D.B. castor
- Finish with paint

Bedside Locker



ISC-1050

Specifications:

- Size: 410 mm square, height: 810 mm

Features:

- MS square/round construction
- CRCA sheet box
- Machine pressed top
- Covered with SS/Aluminum
- Finish with paint

Delux Locker (ABS)



ISC-1047

Product information:

- * Dimensions: L480mm*W480mm*H760
- * Packing size: L500mm*W500mm*H780mm
- * Packing: carton packaging
- * Net weight: 12kg
- * Gross weight: 13.5kg
- * Overall made of ABS engineering plastic
- * Standard accessories: 1 drawer, 1 cabinet, 1* towel rack on the side
- * Optional: 4*universal casters

Semi-Deluxe Locker

Specifications:

- Size: 410 mm square, height: 810 mm

Features:

- MS square construction
- CRCA sheet box
- Machine pressed top
- Covered with SS Top
- 1 Drawer
- Finish with paint



ISC-1048

Delux Locker (lite)



ISC-1049

Specifications:

- Size: 410 mm square
- Height: 810 mm

Features:

- CRCA sheets enclosed on three side having one drawer and one box
- ABS top quality of with raised edge on four sides
- Cabinate Door is ABS, And Drawer Cover is ABS
- Mounted on 50 mm D.B. castor
- Finish with paint

Baby Cot



ISC-1079

Specifications:

·Size: 710 mm L X 410 mm W X 810 mm H

Features:

- MS round construction
- Rod for vertical support
- Mosquito pole arrangement
- Mounted on rubber shoe
- Finish with paint

Baby Crib Cot

Specifications:

·Size: 710 mm L X 410 mm W X 810 mm H

Features:

- SS round construction
- Rod for vertical support
- Mosquito pole arrangement
- Mounted on rubber shoe
- One Side Drop Railing
- Finish with Polish



ISC-1080

Baby Cradle



ISC-1081

Features:

- Frame Made of CRCA MS/SS tube
- Cradle made of MS/SS wire
- On PVC shoes
- Dimension: 900 L x 375 W x 975 H mm approx
- Pre-treated and Epoxy Powder Coated/ Polish

Baby Basinet Trolley

Technical Specification
Mobile basinet cot for neonates
Cart on 4 swivel castors,
approx. dia.100 mm, 2 castors with brake
Baby Tray with mattress,
along with head up/down facility
and X-ray cassette holder
Mattress density approx. 21-25 kg/m³ and
with removable, washable, waterproof covers
6mm thick - Transparent acrylic,
drop down and lockable side panels
Two shelves below baby bed for under
surface phototherapy and storage.



IV Stand



ISC-1051

Features:

- Height: adjustable 1050 mm to 1950 mm
- Base covered with SS sheet
- Height adjustment knob
- Mounted on plastic castor
- High strength
- Durable
- Stain resistance
- Customized usability
- Available in SS & MS

Bedside Screen



ISC-1060

Three fold screen with curtain.
Pretreated epoxy finish.

Overall size :
228w X 174h cm. Castors dia 5cm.

Jumbo O2 Trolley



ISC-1062

MS trolley for holding and transporting
single or multiple gas cylinders
Mounted on wheels

Oxygen Trolley



ISC-1061

Mobile on two fixed 10 cm. Castors.
Pretreated, Epoxy coated finish.

Patient Food Table



Food Table with height adjustment by gas spring.
Single section moulded top.
Mounted on swivel castors
Overall Dimension Top 812L x 406, 610~1015 H

Description :

Rectangular frame work mounted on 5 cms castors
30" x 16" ABS Top, adjustable by Gear Mechanism.
Finish : Pre-treated and Epoxy Powder Coated.

Patient Food Table



Description :

Rectangular frame work mounted on 5 cms castors
30" x 16" laminated top adjustable by Gear Mechanism.
Finish : Pre-treated and Epoxy Powder Coated.

Patient Food Table



Description :

Rectangular frame work mounted on 5 cms castors
30" x 16" laminated top adjustable by side knob.
Finish : Pre-treated and Epoxy Powder Coated.

Patient Food Table



Over Bed Table (ABS Top)



·Size of 810 mm L X 410 mm W

Features:

- Ms round structure
- Sanmica top
- 25 mm laminated panels (Sanmica)
- 50 mm Castor
- Finish with powder coated paint

Bowl Stand



Specifications:

- Size: 350 mm
- Height: 810 mm

Features:

- MS/SS round structure
- Rod for round
- Mounted on 50 mm D.B. Castor
- Finish with paint/polish.

Kick Bucket



- (a) Frame work made of Stainless Steel tubes.
- (b) Mounted on 50mm Castors

Linen Trolley



- Size : 500 mm
- Dia Height: 800 mm
- MS/SS round construction
- MS/SS flat for support
- Canvas fitted with round
- Mounted on 100 mm D.B. Castor
- Finish with powder coated/heavy polish.

Soiled Linen Trolley



Description :

Push handle at one end
Frame work of SS tube on 4" castor
Superior quality plastic bucket
Pre-treated and Epoxy powder coated
Also available in S.S Frame
Complete in S.S Frame

Features:

One, Two, Three and Four Compartment waste segregation system.
Stainless Steel trolley on castors
foot operating system for opening of lid
the bins can be interchanged as and when required
the bins comply UN & NFX standards of safety.
Autoclave-able and environment friendly,
reusable plastic bins as per BMW colour coding
Available Bin Size 30 Ltrs.

Waste Bin Trolley



4 Bins



2 Bins



1 Bin



3 Bins



ISC-1110

Specifications:

·Size: 610 mm L X 410 mm W X 1520 mm H

Features:

- 5 Shelves
- MS angle construction
- Top and behind side covered with CRCA sheet
- Both sides fitted with glass
- Lockable handle
- Finish with paint

4 Fold Traction Table offered comes in precision designed & constructed finish and provides suitable support for cervical and lumbar traction therapy involving application of mechanical force on cervical/lumbar traction. The smooth working action of the system allows providing desired relief from issues like muscle spasms as well as also provide for pain relief by improving blood circulation and assisting in repair of soft tissue damage. Some of its features include helps in subsiding of inflammation; helps in releasing soft tissue adhesions; aids in correcting spinal joints post micro abnormal changes to spine; support resetting micro-dislocation and restoring normal physiological curvature of spine

Traction Bed



ISC-1111

Tilt Table Manual



ISC-1112

This Tilt table manual offers a smooth and quiet tilt function and manufactured using superior quality raw material as per the set industry standards and norms. Moreover, the Tilt table Manual offered in various specifications to meet the variegated requirements of our clients and doctors.

Product details:

Size

180L x 75W x 60H cms

Product description:

Features :

Uniformly Perforated CRCA Sheet Top

Frame made of Strong Rectangular CRCA pipe

Tubular Head and Foot Bows of Equal Height with vertical Tube Supports

Pre-Treated and Epoxy Powder Coated

Size : 180L x 75W x 60H cms

Pediatric Bed



ISC-1113

Scrub Station



ISC-1114

Description :

Scrub Station wall mounted Scrub Station, made of heavy duty Stainless Steel 304 grade designed for splash free usage without touching the taps soap dispensers directly without the handle.

Instrument Tray



ISC-1115

Sizes:
8" x 6" 9" x 6"
10" x 8" 11" x 7"
11" x 9" 12" x 8"
12" x 9" 12" x 10"
14" x 10" 15" x 12"
18" x 12" 8"x12"x3"

Kidney Tray



Sizes:
6",8",10",12"

ISC-1116

Dressing Drum



ISC-1117

Sizes:
15"x12"
13"x10"
12"x10"
11"x18"
11"x9"
9"x9"
9"x6"

Cidex Tray



Sizes:
27"x7"x6" (lock)
27"x7"x5"

ISC-1118

Catheter Tray



ISC-1119

Sizes
8"x 3"
9"x3
16"x4"

Bed Pan

ISC-1120

Description :
Our stainless steel bed pans are completely Resistant to stains & cracks. The unique design of the pan makes it comfortable to use for patients at hospitals and home. Available in different specifications at most competitive prices.



Male & Female

Urinal Pot



Male & Female

Description :
Our urinal pots are specially designed keeping the convenience of patient in mind. The design of the pot allows easily disposal of the collected urine. Made from heavy gauge stainless steel, these pots are absolutely rust free and very durable.

ISC-1121

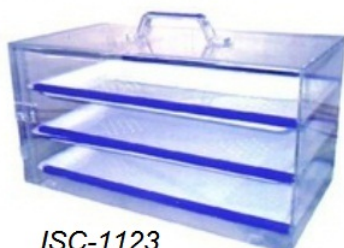
Bowl



ISC-1122

Sturdy basin with smooth and round corners. Designed for use in hospitals, our basin have stainless steel body with smooth finishing. The complete range basins can be availed in different sizes based on the requirement of the clients.

Formalin Chamber



ISC-1123

Description :
Our three tray formalin chambers are used in various hospitals for sterilization process. These chamber effectively kills the virus and other harmful germs that may cause infection.

A-20"x8"x8" (Three Trays), B-23"x8"x8" (Three Trays),
C-26"x8"x8" (Three Trays), C-23"x12"x12" (Three Trays)

Also Available in Two Trays.

A-12"x7"x6" (Two Trays), B-14"x8"x6" (Two Trays)

Fogger (Aerojet)



ISC-1124

Dry vapour fumigation machine
Compatible with wide range of (H₂O₂ based) fogging solutions & environment disinfectants.
Enables fast & safe aerial fumigation process.
Generates ultra fine (sub micron sized) dry fog of non wetting aerosols disinfecting large spaces uniformly.

Specifications:	
Power Supply	:220 AC, 50 or 60 Hz
Aerosols	:Submicron Size(non- wetting)
Spread & Reach	:50ft distance & 25ft height
Space Treatment	:Up to 15,000 cu.ft.
Treatment of 100sqft area	: 400ml disinfectant solution
Nozzle Assembly	: non clogging design- Stainless Steel Needle Non-reactive engineering plastic.
Precision metering system	: 50ml/minute
Solution Tank & Lid	: 5litre stainless steel Gr. 304(Autoclavable) Liquid filling nipple-SS 304 Or Engg. Plastic tank set 5 ltr. Capacity with graduated markings Tank gasket- Silicone grade
Silicon Tubing	: Complies to FDA & USP CLASS VI
Machine Handle	: Stainless Steel
Mounting Ring	: Stainless Steel
Strainer	: Stainless Steel
Liquid Line Connectors	: Stainless Steel
Hardware	: Stainless Steel
Intake Air Filter	:Uniquely designed two layers of dust & fog separately.
Machine Weight:	: 7 kg with SS tank set 6 kg with plastic tank

Fogger (Powerjet)



ISC-1125

POWERJET enables user to select optimum droplet size & flow control allowing to generate fine mist (1-3micron) and medium fine mist (3-10 micron) suitable for all types of chemical treatment.POWERJET is ideal for aerial fumigation in operation theatres, laboratories, clinics, disinfection in food & beverage plants, disinfection in animal houses, pest control hospitality sectors etc.

Specifications:	
Power Supply	:220 AC, 50 or 60 Hz
Aerosols	:Submicron Size(non- wetting)
Spread & Reach	:40ft distance & 20ft height
Space Treatment	:Up to 9,000 cu.ft.
Treatment of 100sqft area	: 400ml disinfectant solution
Nozzle Assembly	: non clogging design- Stainless Steel
Needle	Non-reactive engineering plastic.
Precision metering system	: 0-80ml/minute
Solution Tank & Lid	: 5litre stainless steel Gr. 304(Autoclavable) Liquid filling nipple-SS 304 Or Engg. Plastic tank set 5 ltr. Capacity with graduated markings Tank gasket- Silicone grade
Silicon Tubing	: Complies to FDA & USP CLASS VI
Machine Handle	: Stainless Steel
Mounting Ring	: Stainless Steel
Strainer	: Stainless Steel
Liquid Line Connectors	: Stainless Steel
Hardware	: Stainless Steel
Intake Air Filter	:Uniquely designed two layers of dust & fog separately.
Machine Weight:	: 7.2 kg with SS tank set 6.0 kg with plastic tank

RotoFog TurnTable



ISC-1126

360o Aerial Fogging Treatment
Unique turntable for Aerojet Steriz & fogstar fogging machines.
Spreads aerosol fog in all directions (360o rotation) uniformly.
Enhances space coverage capacity of fogger machine multiple times.
Increases effectiveness of aerial disinfection treatment of large spaces.
Useful in pharma, food processing, animal houses, medical device mfg. etc

Specifications:	
Weight Carrying capacity while in rotation	: 20 KG
Machine Body	: Stainless Steel
Rotation Speed	: 2 RPM

SCOPE OF SUPPLY OF ROTOFOG TURNTABLE DOES NOT INCLUDE FOGGER MACHINE

Fumigator

Hospital:
Operations theatres,
Post opera-tive area,
Patient Wards,
Mater-nity Nursing Homes,
Sanatorium Mortuary,
Pathological & Micro-Biological
Laboratories,
Mobile Family Planning Centres &
Isolat-ed Areas.

Specification:
Power:220 Volt, 50 Hz, 160 Watts
Output:1.5 to 5 Ltrs./ hr.
Speed of Motor:2.960 rpm
Height:17 Inch.
Diameter:18 Inches
Weight (Dry):8 Kgs (App.)
Metals Use:Stainless Steel & Non Ferrous Metals



ISC-1127

Horizontal Sterilizer



ISC-1128

Horizontal cylindrical Electrically operated at 440 volts. AC, 2 phase, 50 cycles.
The sterilizer is pressure type steam jacketed, made from 304 quality stainless steel.
All joints are argon arc welded.
Fitted with multiport operating valve, sterilizing vacuum drier, safety valve in jacket (spring), vacuum breaker, pressure gauge, compound gauge, dial thermometer, perforated tray, plug screen, steam trap and neoprene rubber gasket working pressure 20 lbs p.s.i. and Temperature range 2500 F.
The door made of gun metal and covered with stainless steel lining and have automatic self locking devices.
The Outside will be Well insulated.
The boiler which is to be fitted below will be made of corrosion resistant 304 quality stainless steel it will be fitted with immersion heaters low water protection device, pressure controller, a contractor and toggle switch

SIZES :

The sterilizer is mounted on tubular mild steel frame with ground leveling flangers.
E.load

16"X36 6.0 K.W
16"X48 9.0 K.W
20"X 48" 12 K.W
30"X 48" 18 K.W

Vertical Sterilizer



ISC-1129

Capacity of 11" x 9" 2pcs,
11" x 11" 2pcs & 15" x 12" 2pcs
12" dia x 20" H (3k.w. heater)
12" dia 24" H (4K.W heater)
16" dia x 24" H (5 k.w.heater)

Autoclave (Portable)



ISC-1130

Made of 304G Stainless steel dia. cast Silicon Alloy Lm6, with highly polished body.
Provided with pressure gauge, safety valve, steam release cock, perforated Aluminium tray, 8 bekalite fly nuts, spring handles and one synthetic rubber gasket for lid available in three different ways of operation.
Working pressure 15 to 17 lbs and hydraulic tested 40 lbs and dry sterilization fitted with iron stand without drums.
Stove or Gas/Electrically operated 220/30 volts, AC.

Instrument Sterilizer



ISC-1131

Description :
Our electric operated instrument sterilizer device is specifically designed for use in medical facilities for diagnostic or surgical instrument sterilization.
This reliable, easy-to-use system, provides safe sterilization for applications that demand high heat.

Sizes:
20"x10"x8"
20"x8"x6"
18"x8"x6"
16"x6"x4"
12"x6"x4"
10"x5"x3"

Instrument Sterilizer

Description :
Our electric operated instrument sterilizer device is specifically designed for use in medical facilities for diagnostic or surgical instrument sterilization.
This reliable, easy-to-use system, provides safe sterilization for applications that demand high heat.

Sizes:
20"x10"x8"
20"x8"x6"
18"x8"x6"
16"x6"x4"
12"x6"x4"



ISC-1132

InstaVac



ISC-1133

ISI & CE Marked, ISO:13485, WHO-GMP
Shock proof, Light Weight ABS (Plastic) Cabinet/MS.
Rocker Piston Pump with -720 ± 10 mm Hg
Free air displacement 40 ~ 45 LPM
Noise level of suction Machine is $50 \text{ dB} \pm 03 \text{ dB}$
Electrical Requirement - 220~230VAC, 50Hz, 1Phase
Heavy duty HN-50 PU Castors
76 mm Calibrated Vacuum Gauge
Non collapsible Suction Tubing
2 X 2.0 Ltrs Polycarbonate jars with overflow safety
Packing Size : 50 X 40 X 84 CM
Gross weight : 28 Kg
1/2 HP Motor

SurgiVac



ISC-1134

ISO:13485 & WHO-GMP
Powder Coated MS Cabinet with SS Top
Noise level of suction apparatus is $50 \text{ dB} \pm 03 \text{ dB}$
Rotary Vane Vacuum Pump with -650 ± 10 mm Hg
Free air displacement 18 ~ 20 ltrs/min
Electrical Requirement - 220~230VAC, 50Hz, 1Ph
50 mm Vacuum Gauge
Non collapsible suction tubing
2 X 1.5 Ltrs Glass jars with overflow safety
Bacterial filter fitted on back
Ideal for home healthcare, medical & surgical procedures.
1/4 HP Motor.

Accelerator



ISC-1135

ISI & CE Marked Accelerator High-Vacuum.
Quality Approved From Bureau of Indian Standards, New Delhi.
Anti corrosive Stainless Steel Chassis
Noise level of suction apparatus from is $50 \text{ dB} \pm 03 \text{ dB}$.
Electrical Requirement - 220~230V, 50Hz, 1Phase.
Ideal for MTP / medical / surgical procedures.
Rotary Vane Type Vacuum Pump with -740 ± 10 mm Hg.
Free air displacement 40 ~ 60 ltrs/min.
Heavy duty HN-65 PU Castors.
320 Watt, 1440 RPM, 0.50 H.P. Electric Motor.
100 mm Vacuum Gauge
Non collapsible Silicon tubing
2 X 2.0 Ltrs. Polycarbonate jars with overflow safety.
Bacterial filter fitted on top.
1/2 HP Motor.

PowerVac



ISC-1136

ISO:13485 & WHO-GMP
Powder Coated Mild Steel Heavy Cabinet
Noise level of suction Machine is $50 \text{ dBA} \pm 03 \text{ dBA}$
2 X 2.0 Ltrs. Polycarbonate jars with overflow safety
Rocker Piston Pump with -730 ± 10 mm Hg
Electrical Requirement - 220~230V, 50Hz, 1Phase
Free air displacement 60 ~ 65 ltrs/min
Non collapsible Suction Tubing
Heavy duty HN-50 Castors
50 mm Vacuum Gauge
Ideal for MTP / medical / surgical procedures
1 HP Motor.

LipoVac



ISC-1137

Quality Approved From Bureau of Indian Standards.
Anti corrosive, Powder Coated Chassis
200 Watt Heavy Thermal Protector Electric Motor
2 X 2.0 Ltrs. Polycarbonate jars with overflow safety
Noise level of suction apparatus from is 50 dB +/- 03 dB
Electrical Requirement - 220~230V, 50Hz, 1Phase
Ideal for MTP / medical / surgical procedures
Oil Free Rocker Piston Pump with -750 +/- 10 mmHg
Free air displacement >100 LPM
Non collapsible Silicon tubing
Bacterial filter fitted on top
Heavy duty HN-65 PU Castors
100 mm Vacuum Gauge
1 HP Motor

MiniVac



ISC-1138

The MiniVac is a compact and lightweight medical aspirators that has low vacuum/low flow performance.

It is specifically designed for use in intensive care, recovery rooms and pediatric wards where low flow/low vacuum is required. It has an oil-free Rocker Piston pump with permanently lubricated bearings, which ensures quiet operation and low maintenance.

It incorporates a 1.5 Liters Polycarbonate collection vessel fitted with a float valve system, providing automatic shut-off to avoid overflow and a bacterial filter.

Its lightweight robust design makes it ideal for use by the emergency services.

Foot Suction



ISC-1139

CE Marked, ISO:13485 & WHO-GMP
Powder Coated Heavy MS Base
1500ml Polycarbonate Jar with ABS Lid
High Chrome Metal Components
ABS (Plastic) Piston Pump
Aluminium Carrying Handle
Non-Collapsible Suction Tubing

The Nano is an AC/DC/Battery powered suction Machine that can be used in a wide variety of situations by emergency services, paramedic Machine and AMBULANCE because of its battery operation. This second-generation Nano suction Machine can be operated on AC line current, its own internal sealed lead acid battery or through an optional 12V power cord with cigarette lighter socket for vehicles.

The Nano will automatically switch from AC power, AC charging, 12V operation, and battery. 600ml autoclaveable Polycarbonate collection jar that incorporates with overflow device. Low Battery Indication is provided on front panel of the Machine. Nano has an oil-free Rocker piston pump with permanently lubricated bearings which ensures quiet operation and low maintenance.

Nano Suction



ISC-1140

Handheld Suction



ISC-1141

It is a new emergency product. portable, powerful and economical
It works only by hand pressure and permits to achieve a depression of -0.6 mbar
Delivered with a washable 300 ml jar
Thanks to its "GUNshape", it is possible to use only by one hand
It is possible to be connected to the catheters and to the endotracheal tube

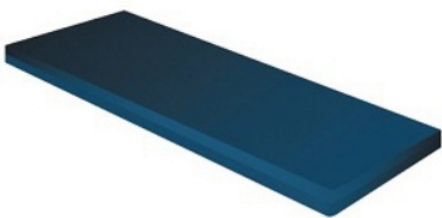
Mattress



Fowler & ICU



Semi Fowler



Plain

Available in 3 inch & 4 inch

Accessories

ABS Panels



MSI-2105

Railing (Imported)



SS Collapsible



Aluminium Collapsible

IV Pole



Imported(SS)



Stainless Steel

Medical Castors



Available Sizes: 4", 5"

X-Ray View Box



OUR OTHER RANGE OF PRODUCTS



Operation Theater Tables- Super Deluxe Table, C-Arm Hydraulic, C-Arm Electric, Electro Manual.
Operation Theater Lights (LED)- 3, 4, 4+3, 4+4 reflectors
Anaesthesia Workstations, Patient Monitoring System.
Electro Surgical Generators- Electro Surgical Units, Vessel Sealing Systems
Endoscopy Equipment- Co₂ Insufflator, Led Light Source, Endoscopy Camera



Infant Radiant Warmer, LED Photo Therapy, Infant Incubator, Smart Bubble CPAP with HHHFNC, Non-Invasive Ventilation (nCPAP), Neonatal Resuscitation Units (NRU) Resuscitation Kits, Resuscitation Accessories.

Manufactured By:

INNOVATION SURGICAL COMPANY

Work Shop: 265, Roy Bahadur Road, New
Alipore Kolkata-700053, (W.B), India

Mobile: 9593263572/6290992813

e-mail: innovationsurgicalcompany@gmail.com

website: www.innovationsurgical.co.in

Authorised Distributor/Dealer