

## Electromedical Devices Catalog



## Fingertip Pulse Oximeter

FPO 50

**Display Mode:** 0.96" Dual color OLED display  
**Screen Resolution:** 128\*64  
**SpO2 Measuring Range:** 0%~100%(the resolution is 1%)  
**Accuracy:** 70%~100%:  $\pm 2\%$ , Below 70% unspecified  
**PR Measuring Range:** 30bpm~250bpm, (the resolution is 1bpm)  
**Accuracy:**  $\pm 2$ bpm or  $\pm 2\%$  (select larger)  
**Resistance to surrounding light:** The deviation between the value measured in the condition of man-made light or indoor natural light and that of darkroom is less than  $\pm 1\%$ .  
**Power Consumption:** Less than 80mA  
**Voltage:** DC 2.6V~3.6V  
**Power Supply:** 1.5V (AAA size) alkaline batteries  $\times 2$   
 Battery working hourThe theoretical number is 32 hours.  
**Safety Type:** Interior Battery, BF Type  
**Measurement Performance in Weak Filling Condition:** SpO2 and pulse rate can be shown correctly when pulse-filling ratio is 0.4%. SpO2 error is  $\pm 4\%$ , pulse rate error is  $\pm 2$  bpm or  $\pm 2\%$  (select larger).  
**Certificate**CE/FDA



## Fingertip Pulse Oximeter (CHILD)

FPO 92

The children's fingertip pulse oximeter features in small volume, low power consumption, convenient operation and portability. It is only necessary for patient to put one finger into fingertip photoelectric sensor for diagnosis, and the display screen will directly show measured value of hemoglobin saturation. It has been proved in clinical experiments that it possesses rather high precision and repeatability.

### Detailed descriptions of product functions:

1. Display Type: OLED display
2. SpO2 Measurement range:70%~99%  
 Accuracy: $\pm 2\%$  on the stage of 80%~99%;  
 $\pm 3\%$  on the stage of 70%~79%;  
 Below 70% no requirement
- Resolution: $\pm 1\%$
3. PR:Measurement range:30BPM~240BPM  
 Accuracy: $\pm 1$ BPM or  $\pm 1\%$ (the larger one)
4. PI index:measurement scope:0~20 (optional)
- 5 Power: rechargeable lithium battery
- 6 Power consumption:below 30mA
- 7 Automatic power-off:the product shuts off by itself when no finger is in the product  $\geq 8$  seconds
8. Dimension:44mm $\times$ 28.3mm $\times$ 26.5mm
9. Operation Environment:Operation Temperature:5 $\square$ ~40 $\square$   
 Storage Temperature:-10 $\square$ ~40 $\square$   
 Ambient Humidity:15%~80% on operation  
 10%~80% in storage
- Air Pressure: 70kPa~106kPa
10. Declaration:EMC of this product comply with IEC60601-1-2 standard.
11. Measurement Performance in Low Perfusion Condition:required test equipment (BIO-TEK INDEX Pulse Oximeter tester) could measure the available pulse wave with the amplitude of 6% of the simulation pulse wave amplitude.
12. Interference Resistance Capacity against Ambient Light::Device works normally when BIO-TEK INDEX Pulse Oximeter tester exerts interfering signal test.



Upto 12 Years



## Fingertip Pulse Oximeter

SpO<sub>2</sub>, PR & PI

FPO 91

### Technical Parameter :

- Integrated with spo2 probe and processing display module.
- Application: hospital, home, community medical treatment, sports healthcare etc.
- Can measure spo2 and pulse rate accurately.
- Spo2 and pulse rate display, pulse rate waveform and bar graph display.
- Battery voltage low indication.
- Four directions and six modes.
- Screen brightness adjustable.
- Low power consumption, shut off automatically when no signal.
- Small volume(57(L) x 31(W) x 32(H) mm) light, convenient to carry.
- Display mode: 0.96" double color Led display, screen resolution; 1% for spo2, 1 bpm for pulse rate.
- Accuracy: +\_ 2%(70%~100%), unspecified (<70%) for spo2, +\_ 2bpm or +\_ 2% (select larger) for pulse rate.
- Power supply: 1.5v (AAA size) alkaline batteries can work 20 hours continuously.
- Interference resistance capacity against ambient light and measurement performance at low perfusion.



With Beep & Alarm

## Table Top Pulse Oximeter

Principle of the CMS70A Table top Pulse Oximeter is as follows: Photoelectric Oxyhemoglobin Inspection Technology is adopted in accordance with Capacity Pulse Scanning & Recording Technology, the Pulse Oximeter can be used in measuring the pulse oxygen saturation and pulse rate through finger. The product is suitable for being used in family, hospital, oxygen bar, community healthcare, physical care in sports (It can be used before or after doing sports, and it is not recommended to use the device during the process of having sport) and etc.

### Major Features

1. Operation of the product is simple, low power consumption
2. SpO<sub>2</sub> value display
3. Pulse rate value display, bar graph display
4. PI display
5. Pulse waveform display
6. Menu operation
7. Screen brightness can be changed
8. The display mode can be changed
9. Pulse rate sound indication, it can be turned on or turned off
10. With measured data overruns limits and low-voltage alarm function, the upper/down alarm range can be adjustable
11. Battery capacity indication
12. Low-voltage indication: low-voltage indicator appears before working abnormally which is due to low-voltage, and with alarm function
13. Connected with an external oximeter probe
14. Data storage function, and the storage data can be uploaded to computer
15. Real-time data can be transmitted to computers

CONTEC®  
CMS 70A



### Main performance

Display Mode: TFT Screen and LED display  
 Screen Resolution: 320\*240  
 SpO<sub>2</sub> Measuring Range: 0%~100% (the resolution is 1%)  
 Accuracy: 70%~100%: ±2%, Below 70% unspecified.  
 PR Measuring Range: 30bpm~250bpm (the resolution is 1bpm)  
 Accuracy: ±2bpm or ±2% (select larger)  
 Measurement Performance in Weak Filling Condition: SpO<sub>2</sub> and pulse rate can be shown correctly when pulse-filling ratio is 0.4%. SpO<sub>2</sub> error is ±4%, pulse rate error is ±2 bpm or ±2% (select larger).  
 Resistance to surrounding light: The deviation between the value measured in the condition of man-made light or indoor natural light and that of darkroom is less than ±1%.  
 Power Consumption: About 350mA  
 Voltage: AC 100~240V, 50/60HZ  
 Power Supply: Built-in recharge Li-Polymer  
 Battery working hour: after the device built-in battery finished the charge, it's continuous working time is not less than 1 hour  
 Safety Type: I device, BF Type

## Pulse Oximeter With NIBP

CONTEC®

CMS 5100

### Features:

2.8" (320×240) true color TFT LCD screen, displays the information of time, SpO2 Plethysmogram, alarm condition, trend graph, list and system settings, etc.;  
Visual and audible alarm for SYS, DIA, MAP, SpO2 and PR, and upper and lower limit of alarm can be set as necessary;  
Independent nonvolatile memory, storage for up to 2,000 groups of NIBP data and 78,000 groups of SpO2 data;  
Convenient and quick in reviewing measurement data, available for reviewing the NIBP trend graph of 24 hours and SpO2 trend graph of 22 hours.  
Built-in rechargeable lithium polymer battery, ensuring uninterrupted monitoring.  
Display the measurement result of SYS, DIA, MAP, SpO2, PR and bar graph by the display screen of high-brightness digital tube



### NIBP

Using Oscillometry technology, also called Oscillography technology to measure the blood pressure.

- 1) Measurement mode: manual/auto/continuous
- 2) Measurement interval in auto mode: 1, 2, 3, 4, 5, 5×n(n=2, 3, 4...51) min.
- 3) Resolution: 1 mmHg
- 4) Accuracy: max mean error: ±5 mmHg; max standard deviation: 8 mmHg.
- 5) Overpressure protection: dual protection for both software and hardware
- 6) Others: reset, self-testing and accuracy testing of static pressure
- 7) Measurement range: 25mmHg~260 mmHg

### SpO2

Measurement range: 0 %~100 %  
Alarm range: 0 %~100 %  
Resolution: 1 %  
Accuracy: 70 %~100 %, ±2 %; below 70 % unspecified.

### Pulse Rate

Measurement range: 25 bpm~250 bpm  
Alarm range: 25 bpm~250 bpm  
Resolution: 1 bpm  
Accuracy: ±2 bpm or ±2 %, whichever is greater

Dimension:  
190(L) x 162(W) x 240(H)mm

Weight:  
1.6 Kg

### Safety and Power supply

- 1) Power supply: rated voltage: ~220 V, rated power: 50 W
- 2) Safety classification: Class I equipment, type BF defibrillation-proof applied part

## Multi-Para Patient Monitor

ISC 8

The display is 8 inch high resolution color TFT.

### Features and Benefits

- 8 inch high-resolution color screen
- Exquisite design suitable to move operation
- Operation interface: Standard, Trend screen, Oxygen screen, NIBP list, Big font screen
- Freeze instant waveform for real time S-T segment analysis, pace-maker detection
- Storage for up to 400 groups of NIBP list, 60 alarm events records recall
- Built-in rechargeable lithium battery, 4 hours working capacity.
- Capture dynamic wave froms
- Patient info input management function



### Standard configuration

SPO2, PR, NIBP, ECG, RESP, TEMP

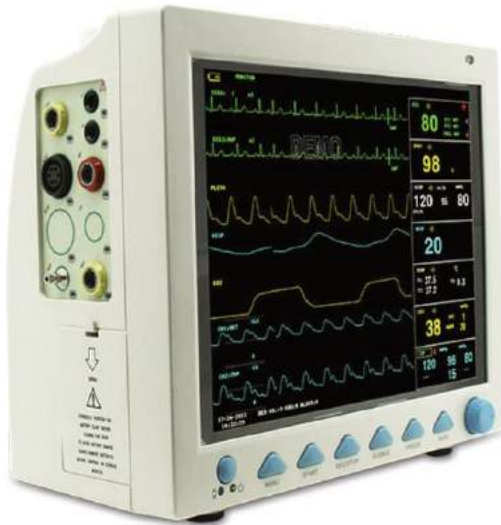
### Optional configuration

ETCO2



# Multi-Para Patient Monitor

**CONTEC®**  
**CMS 8000**



12.1" Screen  
EtCO2 & IBP Upgradable  
5 Parameter

## Standard configuration

- 1) Adult finger tip SpO2 probe (9-pin)
- 2) Adult NIBP cuff
- 3) NIBP extension tube
- 4) ECG lead cable
- 5) ECG electrode
- 6) Temperature probe
- 7) Power cord
- 8) User Manual

## Optional configuration

Central monitor software



## Different Parameter Configurations



Multi-parameter  
Monitor parameters:  
20mmHg CO2, EtCO2, HR, RESP,  
SaO2, SpO2, TBP

## Built-in Rechargeable Lithium Battery



Power management  
AC and DC

## Features

- 1) 12.1" TFT color LCD, multi-language interface (Simplified Chinese, Traditional Chinese, English, French, German, Turkish, Spanish, Portuguese, Italian, Dutch, Romanian, Russian, Kazakh, Polish, Czech).
  - 2) Fanless design, quiet, energy-saving and clean, which reduces the possibility of cross-infection.
  - 3) All-round monitor for adult, pediatric and neonate.
  - 4) With standard interface, oxygen graph, trend graph, big character interface and view bed, convenient to observe.
  - 5) Finish all operations by keys and knobs.
  - 6) Maximum 8-channel waveform synchronous display.
  - 7) Display 7-lead ECG waveform on one screen, cascade ECG waveform display.
  - 8) Adopt digital SpO2 technology, anti-motion and anti-ambient light interference, and measurement can be performed under the circumstance of weak filling.
  - 9) Heart rate variability (HRV) analysis function.
  - 10) NIBP measurement mode: Manual/AUTO/STAT, storage for 4800-group NIBP data.
  - 15) AC/DC, built-in rechargeable lithium battery achieve uninterrupted monitoring.
- Weight - 4.5 kg approx

## Performance

### ECG:

Multi-parameter Portable Cardiac Patient Monitor FDA  
Lead selection: I, II, III, aVR, aVL, aVF, V  
Waveform: 5-lead, dual-channel  
3-lead, single-channel  
Gain: 2.5mm/mV, 5.0mm/mV, 10mm/mV, 20mm/mV, 40mm/mV  
Scan speed: 12.5mm/s, 25 mm/s, 50 mm/s

### RESP:

Method: R-F(RA-LL) Impedance  
Respiration rate: Measurement and alarm range: 0~150 rpm  
Resolution: 1 rpm  
Measurement accuracy:  $\pm 2$  rpm  
Alarm accuracy:  $\pm 3$  rpm  
Apnea alarm: 10~40s  
Scan speed: 6.25 mm/s, 12.5 mm/s, 25 mm/s

### NIBP:

Method: Oscillometry  
Mode: Manual/AUTO/STAT  
Measurement interval in AUTO mode:  
1/2/3/4/5/10/15/30/60/90/120/240/480/960 minutes  
Measurement period in STAT mode: 5 minutes  
Measurement and alarm range: 10 ~ 270 mmHg  
Resolution: 1 mmHg  
Cuff pressure accuracy:  $\pm 3$  mmHg  
Measurement accuracy:  
Maximal mean deviation:  $\pm 5$  mmHg  
Maximal standard deviation: 8 mmHg  
Over-pressure protection:  
Adult mode:  $297 \pm 3$  mmHg  
Pediatric mode:  $240 \pm 3$  mmHg  
Neonatal mode:  $147 \pm 3$  mmHg

### Spo2:

Measurement and alarm range: 0 ~ 100%  
Resolution: 1%  
Measurement accuracy: 70%~100%:  $\pm 2\%$ ;  
0%~69%: unspecified  
PR Measurement and alarm range: 30 ~ 250 bpm  
Measurement accuracy:  $\pm 2$  bpm or  $\pm 2\%$ , whichever is greater

### TEMP:

Channel: dual-channel  
Measurement and alarm range: 0 ~ 50°C  
Resolution: 0.1 °C  
Accuracy:  $\pm 0.1$  °C

### EtCO2 (Optional):

Method: Sidestream or Mainstream  
Measuring Range: 0~150mmHg  
Resolution: 0~69 mmHg, 0.1 mmHg  
70~150 mmHg, 0.25 mmHg  
Accuracy: 0~40 mm Hg  $\pm 2$  mm Hg  
41~70 mm Hg  $\pm 5\%$   
71~100 mm Hg  $\pm 8\%$   
101~150 mm Hg  $\pm 10\%$

AwRR Range: 2~150 rpm

AwRR Accuracy:  $\pm 1$  BPM

Apnea Alarm: Yes

### IBP (Optional):

Channel: dual-channel  
Label: ART, PA, CVP, RAP, LAP, ICP, P1, P2  
Measuring and Alarm Range: -10~300 mmHg  
Resolution 1 mmHg  
Accuracy:  $\pm 2\%$  or 1mmHg, whichever is greater

Power supply: 100-240V~, 50/60Hz

Safety classification: Class I, type CF defibrillation-proof applied part

## ISC 15



### 15" Screen

## Multi-Para Patient Monitor

### Features

Original design and Advanced Technology with various function our products can satisfy the convenient operation and the selection for all data of monitor in all departments in the hospital.

#### Display

15 inch TFT screen, 1024\*768 high-resolution 8 channel waveforms display, suitable to bedside. Support alarm of voice, light character string, 3 level of adjustable voice.

#### Features

High capacity to information storage wired & wireless, suitable for central monitoring system

Standard parameters

ECG, RESP, SPO2, PR, NIBP, TEMP

#### Optional

IBP, touch screen, wireless module, recorder, central

#### Powerful Battery

AC power, Lithium battery for 200 Mins

## Multi-Para Patient Monitor

**CONTEC®**

**CMS 9200**

### Features

Elegant appearance, clear marks, standard interface, oxygen graph, trend graph, big characters, other BED observation, which are convenient for users. Standard parameters: ECG, RESP, NIBP, SpO2 and dual-channel TEMP, IBP, CO2 and built-in printer are optional.

Fifteen languages are optional, and all operations can be finished by keys and buttons.

15" Colour LCD display patient parameter and waveform collected, and alarm, bed NO, clock, equipment state and other information provided by the monitor synchronously.

Monitoring parameters, scan speed, volume and output contents can be set optionally.

Storage of 480-hour trend at, and review of 34-second holographic waveform.

High resolution 15.1" colour TFT display

Lightweight, compact and portable

**ECG, SPO2, NIBP, RESP, 2-TEMP PR**

32 second full disclosure waveform review

500 NIBP measurement data can be storage and recall

Data and waveforms colour be adjustable

Optional 2-IBP, ETCO2, and thermal printer

Built-in rechargeable lithium battery

ECG waveforms of 7-leads display on the same screen

72 hours graphic and tabular trends of all parameters

72 alarm events of all parameters recall

Arrhythmia analysis and S-T segment analysis



### 15" Screen



**CONTEC**

**CMS 7000**



### Features

1. 12.1" High brightness TFT LCD display, Multi-language interface
2. Portable, streamline handle design
3. Big figure display
4. ECG Waveforms of 7-lead displayed in one screen
5. 96-hour tabular and graphic trends & date storage
6. Compatible and self identify 3-lead and 5-lead ECG cable
7. NIBP dual Over Pressure Protection
8. Isolated floating, anti defibrillation protected and anti high-frequency interference
9. Lightweight, compact and portable
10. Built-in rechargeable lithium battery
11. ECG waveforms of 7-leads display on the same screen
12. 72-hours graphic and tabular trends of all parameters
13. 72 alarm events of all parameters recall
14. 32 seconds full-disclosure waveform review
15. 500 NIBP measurement data can be storage and recall
16. Date and waveforms color be adjustable
17. Arrhythmia analysis and S-T segment analysis
18. Suitable for adult, pediatric and neonatal patient

## Multi-Para Patient Monitor

12.1" Patient Monitor can monitor ECG, RESP, SpO2, NIBP, and Dual-channel TEMP (Standard configuration). This Multi-parameter patient monitor integrates parameter measuring module, display and recorder in one device to form a compact and portable device. At the same time, its built-in replaceable battery provides convenience for patient moving.

Details about Standard parameter & configuration :

#### NIBP:

1. Method: Oscillometry
2. Modes: Manual/Auto/Continuous
3. Auto measure time: Adjustable
4. Measurement range: 10-270mmHg

#### ECG:

1. Lead mode: 3-lead or 5-lead
2. Lead selection: I; II; III; aVR; aVL; aVF; V
3. Heart rate range: Adult: 15-300bpm; Pediatric/Neonatal: 15-300bpm
4. ECG waveform: 2 channels
5. Accuracy:  $\pm 1$  bpm or  $\pm 1\%$
6. S-T segment detection Measurement range:  $-0.2\text{mv} \sim 2.0\text{mv}$
7. Alarm: Yes, audible and visual alarm, alarm events review
8. High resolution 12.1" color TFT display

#### SPO2:

1. Measurement range: 0-100%
2. Accuracy: 70-100%,  $\pm 2\%$  0-69%, unspecified

#### Pulse rate:

1. Range: 20-254bpm
2. Accuracy:  $\pm 3$ bpm

#### Respiration:

1. Method: RA-LL impedance
2. Range: Adult: 0-120rpm; pediatric/neonatal: 0-150rpm
3. Apnea alarm: Yes

#### Temperature:

1. Range: 0-50°C
2. Apnea: 0.1°C
3. Channel: Dual-Channel

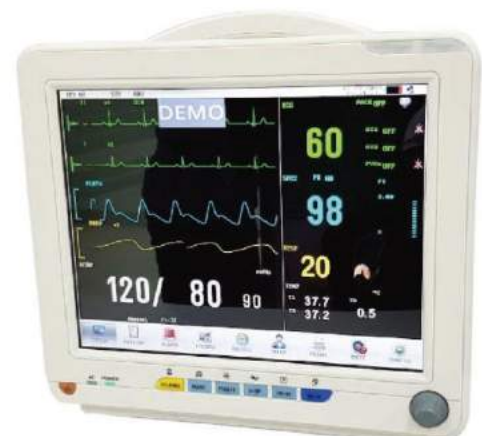
## Multi-Para Patient Monitor

### Features

1. 12.1 inch, high resolution colour TFT LCD Screen
2. Thinner and lighter design, convenient and portable for user. pacemaker detection.
3. Freeze instant waveform for real time S-T segment analysis,
4. 3-level audio/visual alarming.
5. Efficient resistance to interference of defibrillator and HF knife
6. Lasting working capacity with built rechargeable lithium battery
7. 400 group of NIBP list, 6000 second ECG waveform recall. 60 alarm events record recall, 7-day trend chart in storage.
8. Wire/wireless central monitoring system applicable to ICU/CCU/OR

#### Standard Configuration:

ECG, RESP, SpO2, NIBP, and Dual-channel TEMP.



**ISC 12**

## ETCo<sub>2</sub> Module

ET-01

CONTEC®

### Specifications

The module for China's first micro-plug-in ETCO<sub>2</sub> module, The appearance and size close to the United States Waliking plug-CO<sub>2</sub> module, the communication protocol is compatible with Kang plug-in module. The module gas sampling flow of 50ml / min with the international popular micro-flow CO<sub>2</sub> module. The module has atmospheric pressure automatic compensation function, so do not need to rely on doctors manually enter the atmospheric pressure value ensure that the CO<sub>2</sub> waveform and ETCO<sub>2</sub> numerical accuracy



Working principal Non-diffusion infrared absorption method, multi-wavelength, no moving parts in the sensor.

Initialization time With in 4 seconds after the start of sampling, a carbon dioxide waveform (ambient temperature of 25 degrees Celsius) 2 minutes after boot up to the specifications listed in the technical indicators.

Carbon dioxide range 0% - 20% by volume, 0- 152 mmHg (partial pressure) The module measures atmospheric pressure on its own.

Rise Time The infrared detector is 28 ms (typical) and the system is 200 mS.

Carbon dioxide resolution

0.1 mmHg (0 - 50 mmHg interval), 0.2 mmHg (51 - 100 mmHg interval), 0.4 mmHg (101 - 152 mmHg range)

Carbon dioxide accuracy

0 - 40 mmHg interval, + 2 mmHg 41 - 70 mmHg interval, + 5% of reading 71 - 100 mmHg interval,

Respiration rate range

2-150 beats / minute

Respiration rate accuracy

+ 1 / min

make up The module is free to perform atmospheric pressure compensation with a compensation range of 400 mmHg - 850 mmHg Operators can compensate for O<sub>2</sub>, N<sub>2</sub>O, HE and anesthetic gas through menus

## ECG Machine -Single Channel

CONTEC®

ECG 100G

### Features:

2.7" High resolution thermal printing array system

Frequency response is as high as 150Hz

Capable of printing continuously on channel trace and annotations including lead mark and parameter such as

sensitivity, paper speed and filter operation status

High resolution digital filter inhibits baseline drift without affecting ECG waveform

One-touch operation

Concept of floating input circuit meets IEC safety standard

Rechargeable battery supporting > 50 patient examinations.

Input circuit: floating, protection against defibrillator effect

Leads: 12 (standard) lead change automatically

Patient current leakage: < 10µA

Input impedance: ≥ 10<sup>6</sup>Ω

Calibrating voltage: 1mV ± 3%

A/D conversion: 12 bits

Frequency response: 0.05 to 150Hz (IEC)

Time constant: < 3.2 seconds

CMRR: > 80 and 100dB (with filter)

EMG filter: 35Hz (-3dB) or 25Hz (-3dB)

Sensitivity: 1/2, 1 and 2cm/mV

Conversion deviation: ≤ 5%



Recording System:

Thermal array

8 dots/mm (vertical)

16 dots/mm (horizontal, 25mm/second)

Paper speed: 25 and 50mm/s ± 3%

Recording paper: 50mm, 20m and high speed roll

Input circuit current: ≤ 50nA

Safety standard: IEC class I, type CF



## ECG Machine - 3 Channel

3.5" Display, ECG300G is an Electrocardiograph which can collect 12-lead ECG signal and print waveform by the thermal printing system. It features in: recording and displaying ECG waveform in AUTO/Manual mode, measuring and diagnosing ECG waveform parameters automatically, prompting for "Lead off" or "Lack of paper", optional interface languages (Chinese/English), case database management.

ECG 300G **CONTEC®**



### MAIN FEATURES

Sync collection for 12-lead ECG, adopt digital signal processing technology and get high-quality ECG waveform via power frequency filter, baseline filter and EMG filter of ECG signal.

Display of 1/2/3-lead ECG, print mode, sensitivity, paper speed and filter state, etc. on one screen, convenient for contrastively diagnosing.

Multiply printing modes and formats, including manual, auto 4×3, auto 3×4+1, auto 3×4, auto 2×6+1, auto 2×6, etc. Waveform length printed can be adjusted, and with time print function, which meets different requirements.

With the functions of auto-analysis and auto-diagnosis for routine ECG parameters, provide measurement results and auto-diagnosis conclusion for HR, P-R interval, P Duration, QRS Duration, Q-T interval, Q-Tc, P Axis, QRS Axis, T Axis, R(V5), S(V1), R(V5)+S(V1), etc. which reduces the doctor's burden.

Built-in memory stores up to 15 cases (optional SD card, store up to 50 cases), convenient for case review and statistic.

Two languages (Chinese or English) interface and report.

AC/DC, and in optimal DC state, built-in rechargeable lithium battery can continuously work for 8-hour, print up to 70-minute and 175-ECG, which meets the requirements of visiting a patient at home and body examination.

## ECG Machine - 3 Channel

ISC-301

### Specifications

- 7 inch 480\*680 color graphic LCD display.
- Three Channel ECG machine with interpretation
- 12-level ECG simultaneous acquisition
- Multiple Operation models: Manual/Auto/Rhythm analysis
- 80mm\*20m 3-channel recording with a rhythm analysis
- Digital filters eliminating EMG, AC baseline, Drift interference
- Built-in rechargeable Li-ion battery
- 110-240V, 50/60Hz AC power supply.
- 250 patient report save reply (external SD card store 1000 report)
- Frequency Response up to 150 Hz



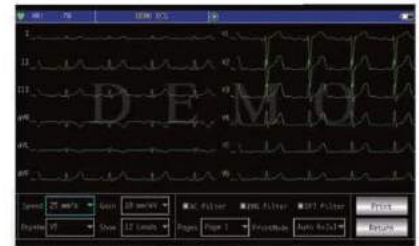
## ECG Machine - 6 Channel

ECG 600G

CONTEC®

### Features

- 7" TFT, touch screen, led backlight
- Digital isolation technology and signal processing solution, digital filter
- Patient management, name, age and id.
- Detail analysis report.
- Built-in lithium rechargeable battery, wide thermal printing system.
- USB and LAN socket.
- Memory: Built-in memory or mini SD Memory card.
- Stores more than 1000 pieces of archive
- Auto-measurement, auto-analysis, and auto-interpretation.
- Can print 90 minutes and print out 150 ECG continually
- ECG-Sync software, USB connection to PC and built-in memory can store more than 1000 cases



## ECG Machine - 12 Channel

### Features

- 1) Sync collection for 12-lead ECG, adopt digital signal processing technology and get high-quality ECG waveform via power frequency filter, baseline filter and EMG filter of ECG signal.
- 2) Display of 3/6/12-lead ECG, print mode, sensitivity, paper speed and filter state, etc. on one screen, convenient for contrastively diagnosing.
- 3) Multiply printing modes and formats, including auto 12x1, auto 6x2+1, auto 6x2+1\_H, auto 6x2, auto 6x2\_H, auto 3x4+1, auto 3x4+2, rhythm 12, rhythm 10, rhythm 8, rhythm 6, manual, etc. Trend chart and histogram of P-R interval can be printed, waveform length printed can be adjusted, and with time print function, which meets different requirements.
- 4) Paper speed: 5mm/s, 6.25mm/s, 10mm/s, 12.5mm/s, 25mm/s, 50mm/s.
- 5) With the functions of auto-analysis and auto-diagnosis for routine ECG parameters, provide measurement results and auto-diagnosis conclusion for HR, P-R interval, P Duration, QRS Duration, T Duration, Q-T interval, Q-Tc, P Axis, QRS Axis, T Axis, R(V5), S(V1), R(V5)+S(V1), etc. which reduces the doctor's burden.
- 6) Built-in memory stores up to 1000 cases, convenient for case review and statistic.
- 7) Multi-language (Turkish, French, Chinese, English, German, Kazakstan, Polish, Portuguese, Russian, Slovenian, Spanish and Ukrainian) interface and report.
- 8) In optimal DC state, up to 10-hour standby time, continuous print more than 3-hour, record up to 300 ECG waveform (commonly, it is 3s case), which meets the requirements of visiting a patient at home and body examination.

CONTEC®

ECG 1200G





## Syringe Pump

SP-01

### Product Feature

1. Syringe pump has Audible and visual alarm for occlusion, empty, near empty, low battery, end of infusion, syringe loose, wrong setting etc
2. HD LCD Display, high capacity words, friendly user interface, dynamically display working status
3. The syringe pump is compatible with 10ml, 20ml, 30ml, 50ml syringe of any brands
4. Preset Solution Volume to greatly reduce the workload of nurses
5. The syringe pump has three work modes: Rate mode, Time Volume mode, Dosage Weight mode
6. The syringe pump has three levels of occlusion: high, middle and low
7. Purge and Bolus function
8. Syringe pump will automatically open up KVO as infusion is completed.
9. Freely Stackable: Users can freely stack one syringe pump onto another to provide multiple Solutions, which have a wide range of clinical applications.
10. Power Source: AC100-240V, 50/60Hz; Internal Battery, DC12V car charge
11. One-key operation makes setup of the syringe pump easy and simple
12. Syringe Plunger Grabble Detector, operable with one hand in a No-Germ Environment
13. The syringe pump can automatically record the settings for last injection
14. Syringe pump has connecting Port for Nurse-Paging



### Technical Specifications

Volume Limit Range 0.1ml---999.9ml(increment of 0.1ml/h)

Injection Volume Done 9999ml(increment of 0.1ml/h)

Blockage-Alarm-Triggering Pressure Levels High 800mmHg $\pm$ 200mmHg(106.7kPa $\pm$ 26.7kPa)

Medium 500mmHg $\pm$ 100mmHg(66.7kPa $\pm$ 13.3kPa)

Low 300mmHg $\pm$ 100mmHg(40.7kPa $\pm$ 13.3kPa)

Alarm Types Solution is almost done  
Injection is finished Preset volume injection is done  
Injection blockage Syringe off Syringe improper  
installation Wrong injection Speed AC unplugged

KVO Speed 1ml/h

Power Consumption 30VA

IP-01

## Infusion Pump



### Product Specification

Speed Range 1ml/h---1200ml/h(increment of 1ml/h)  
 Infusion Accuracy within $\pm$ 5% (accuracy after syringe is installed)  
 High Speed Infusion 100ml/h---1200ml/h(can be calibrated)  
 Volume Limit 1ml---999.9ml(increment of 0.1ml)  
 Infusion Volume Done 9999ml(increment of 0.1ml)  
 Alarm Pressure Value  
 High:800mmHg $\pm$ 200mmHg(106.7kPa $\pm$ 26.7kPa)  
 Medium:500mmHg $\pm$ 100mmHg(66.7kPa $\pm$ 13.3kPa)  
 Low:300mmHg $\pm$ 100mmHg(40.7kPa $\pm$ 13.3kPa)  
 Alarm Types Preset volume is done Infusion blockage door  
 is open Bubbles in the infusion tube Wrong infusion Speed AC power  
 unplugged Battery is running out  
 Bubble Detector Ultra-sound type, sensitivity $\geq$ 25uL  
 KVO Speed 1ml/h---5 ml/h(increment of 1ml/h)  
 Power Consumption 30VA  
 Operation Environmenta) Temperature +5----+40 degree celsius  
 b)Relative Humidity 20----90%  
 Transportation&Storage a)Temperature -30-----+55 degree celsius  
 b)Humidity  $\leq$ 95%

## Fetal Monitor

BT-350



### Features

- 7"wide TFT colour LCD Display.
- Upto 150 patients data saving.
- Fetal heart sound play and record in PC.
- Rotating Screen.
- Multiple language support.
- Built-in quick guide(LCD Type).
- Waterproof probe.

## Fetal Monitor

CONTEC®

### Function

- 1.Compact design, it can be placed horizontally or hung on the wall.
- 2.8.0" color LCD, 60° convertible screen
- 3.Display monitoring curve and data clearly
- 4.Area mark for normal FHR(120 BPM~160 BPM).
- 5.Manual record for fetal movement.
- 6.Alarm for abnormal FHR
- 7.Real-time monitoring for continuous 24 hours.
- 8.Storage, playback and print the monitoring curve for continuous 12 hours.
- 9.Optional interface languages: Chinese and English.
- 10.Optional twins monitoring.
- 11.9-crystal and broad beam transducer.
- 12.Extra long-life and high-resolution built-in thermal printer.
- 13.Communicate with central monitoring system by the built-in RJ45.
- 14.Built-in rechargeable lithium battery ensures that the device can work for 2 hours after unexpected interruption of power supply.



CMS 800G1



## Fetal Doppler

### Features

1.77"TFT colour LCD displays FHR Number and Curve(dual interface),Monitoring time,probe frequency,counting mode,volume and battery capacity.  
Abnormal sound alarm with Fhr data turning from green to red.  
Function setting : switch interface ,count mode,alarm switch,FHR upper &lower limit alarm setting and language.  
Automatic power off(one minute)  
Various frequency probe for different use.  
Battery: 8.4Vrechargeable battery /9V dry battery.



## ISC-105

## Fetal Doppler



Main Technology Specifications Working Frequency : 2.0 MHZ + 10%  
Ultrasonic output Power :  $10b < 10 \text{ mW/cm}^2$  Overall Sensitivity :  $> 90 \text{ dB}$   
(integrated sensitivity 200mm away from the surface of the probe) While  
measuring integrated sensitivity using the doppler frequency (300 + 50) Hz  
Reflecting target speed:  $10 \text{ cm/s} \sim 40 \text{ cm/s}$  FHR measuring range : No  
narrower than 50bpm-240bpm (+ bpm). (Beat Per Minute) FHR accuracy: + 2  
bpm Spatial-peak temp-peakacoustic pressure:  $< 0.1 \text{ MPa}$ . Negative Peak  
Sound Pressure:  $(p_-) < 1 \text{ Mpa}$  ob 2 Output Beam Intensity:  $(I) < 20 \text{ mW/cm}^2$   
2Spatial-peak Temporal-average Derived Intensity:  $(I) < 100 \text{ mW/cm}^2$  spta  
Continous Working Time:  $> 5 \text{ h}$  (Low battery capacity or large volume may  
reduce working hours) 6 2 Coupling gel acoustic impedance  $1.5 \sim 1.6 (10 \text{ g/cm}^2 \cdot \text{s})$   
Auto output power  $< 1.0 \text{ W}$  Battery Type Recommended Two  
pieces of 1.5 V DC battery ( SIZE AA LR6 ) Working Environment  
Temperature  $+5 \text{ }^\circ\text{C} \sim +40 \text{ }^\circ\text{C}$  Humidity  $< 80\%$  atmospheric pressure  $86 \text{ kPa} \sim 106 \text{ kPa}$   
Transport and Storage Environment Temperature :  $-10 \text{ }^\circ\text{C} \sim +40 \text{ }^\circ\text{C}$   
Humidity  $< 80\%$  Atmospheric Pressure :  $86 \text{ kPa} \sim 106 \text{ kPa}$ , well-ventilated  
room without corrosive gases.



## Nasal Mask

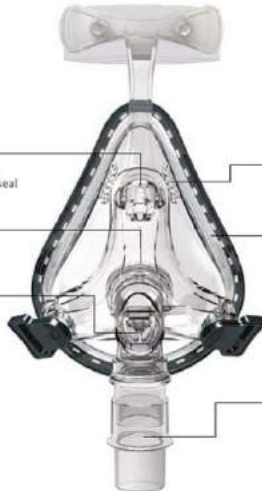
N2



Unique forehead frame adopts 3\*2 adjustable gears, offers more personalized fit, seal and comfort

360° elbow rotation positions the tubing for maximum comfort

Anti-asphyxia valve guarantees the safety if the airflow is stopped or blocked.



Bilateral vent hole disperses air gently and quietly, away from bed partner; Effectively reduce dead space.

Dual-wall cushion Soft silicone material, ergonomic pad shape offers more comfort and seal

Adaptive headgear clips are easy to attach and detach, adapt to different people's faces, maintain the most comfortable headgear position

Optional vice-swivel offers a convenient way to connect and disconnect tubing



## Full Face Mask

F2



**Simple**

Detachable silicone mask seal with anatomically mold feature

**Light**

Extreme light weight provides pleasant & comfortable feel

**Quiet**

Quiet exhalation system



Adjustable angle of pillows for best fit.



360° rotating elbow with gentle and quiet exhaust.



Dual direction adjustable headgear.



Packed with S/M/L pillows.



*Super lightweight design provides minimal face contact for maximum comfort.*

*One mask fits most people with three pillow sizes included.*

*Excellent value for money.*



## Nasal Pillow Mask





## GII Bi-Pap 25T with AVAPS

GII 25T

Pressure support automatically adjusts according to target tidal volume as to improve Hypoventilation Real time Monitoring includes Pressure flow Expiratory tidal volume (vte),respiratory rate (RR) minutes ventilation (MV),leakage Inspiration time (Ti) SpO2\* and pulse rate (PR)\*

BMC + iCode App

SpO2 Kit (Optional)

GPRS / Wifi-Kit (Optional ,individually or combined with SpO2 Kit

Advanced leakage compensation promises adequate volume support. Ti Control ,I/E Sense and Rise time guarantee better ventilation synchronization.



## GII Auto CPAP

GII

### Features

Resmart GII Auto CPAP System

Resmart GII Auto CPAP System E-20A-H-O assembled with LCD screen and 3-button control simplifies your life.

### Easy Data Access

iCode and SD card are two easy ways to transfer your compliance records.

### Smart Pressure Match

Pressure are automatically adjusted to prevent sleep apnea. Reslex respiratory pressure

Relief technology reduce the work of breath so use remain comfortable and compliance.

### Technical Specifications

Dimension: 220 194 112mm/313 194 112mm (with Inh2 heated humidifier)

Weight : <1.6kg/2.4kg(with Inh2 heated humidifier)

Temperature : 5 to 40-C-20 to 55-C / Humidity : <80%

Non-condensing <93% Non-condensing

Atmospheric Pressure : 860 to 1060 hPa 500 to 1060 hPa Standard Compliance

IEC 60601-1 General Requirements for Safety of Medical Electrical Equipment ISO

17510 Sleep Apnoea Breathing Therapy

Mode of Operation : Continuous

AC Power Consumption : 100-240VAC,50/60Hz Type of protection Against Electric

Shock : Class II Equipment

Degree of Protection Against Electric Shock : Type BF Applied Part.

IPXI - Drip -Proof , Vertical

Pressure Range : 4 to 20 hPa (IN 0.5 hPa increment )

Sound Pressure Level : <30 dB,when the device is working at the pressure of 10 hPa

Maximum Flow : > 35 LPM

Pressure Display Accy : 0.5 hPa



## Oxygen Concentrator- 5 ltrs with Nebulizer

OC-101 S



**Single Flow**

### Specifications

Model	OC-101 S
Flow Rate	0-5L/min
Purity	93+3%
Outlet Pressure (Mpa)	0.04-0.07
Sound Level	<50db
Power	AC230V,50Hz(AC220V/110+10%,50/60+1Hz are available)
Power Consumption	<480W
LCD Display	Switch times, Operating pressure, Present Working Time, Accumulating Time, Presentong Timr from 10mins to hours
Alarm	Power failure alarm, High & Low pressure alarm
Net Weight	25Kgs
Size(mm)	365x375x600

It can be used for adjuvant treatment for respiratory system diseases, cardio vascular and cerebral vascular system diseases, chronic obstructive pulmonary disease, carbon monoxide poisoning and other hypoxia diseases. It is suitable for clinics, community hospitals, township health clinics, etc.

## Oxygen Concentrator- 5 ltrs with Nebulizer

OC-101 D



**Dual Flow**

### Specifications

Model	OC-101 D
Flow Rate	0-5L/min
Purity	93+3%
Outlet Pressure (Mpa)	0.04-0.07
Sound Level	<50db
Power	AC230V,50Hz(AC220V/110+10%,50/60+1Hz are available)
Power Consumption	<480W
LCD Display	Switch times, Operating pressure, Present Working Time, Accumulating Time, Presentong Timr from 10mins to hours
Alarm	Power failure alarm, High & Low pressure alarm
Net Weight	25Kgs
Size(mm)	365x375x600

It can be used for adjuvant treatment for respiratory system diseases, cardio vascular and cerebral vascular system diseases, chronic obstructive pulmonary disease, carbon monoxide poisoning and other hypoxia diseases. It is suitable for clinics, community hospitals, township health clinics, etc.

The optional dual-flow configuration allows two users to inhale oxygen at the same time by sharing one machine.

**\* Also Available in 10 ltrs.**



## Emergency Ventilator

EV-900



### Main Features:

1. Easy to operate, easy to carry.
2. Has the function of security protection.
3. The main components are imported high-end devices, which can run stably and reliably for a long time

### Basic configuration:

Mainframe of ventilator, breathing circuits, pressure reducing valve, high-pressure oxygen tubes, power adapter, mask, etc.

### Classification

Class Type B—by protection against electric shock.  
IPX4—by protection against harmful ingress of water, particulate matter.

### Parameters and Functions:

CMV, adjustable respiratory rate, adjustable I:E, adjustable tidal volume.

Build-in relief valve, which will deflate automatically when the airway pressure is too high, avoiding the injury of over ventilation.

In the process of using, the ventilator will stop ventilating immediately and open the autonomous airway when it is suddenly shut down or power cut.

### Environmental Requirements

Relative humidity: 15%~95%  
Ambient temperature: -18~ 50°C  
Atmospheric pressure: 70~106kPa  
Gas source: 0.28~0.6Mpa 60l/min  
Power: AC100V-240V  
Li-battery: 12 V, rechargeable

### Configuration

Standard Configuration: Ventilator, Oxygen Pressure Reducer, High-Pressure oxygen hose, Lung Simulator, Breath Circuit, Mask, Power Adapter.

### Service Conditions:

AC: 110V ~240V, DC: 12V.  
Build-in Li-battery: 12V, 2Ah, working time: more than 8 hours.  
Gas Supply: Oxygen cylinder, Central oxygen supply.



## Automatic External Defibrillator

AED 7000



### Specifications

The AED7000 Automatic External Defibrillator, which is a defibrillation device safe, portable and easy to use. two-button operation

- three-step defibrillation process
- two-button operation
- extensive voice and visual prompts for the operator
- biphasic energy output
- lock-out protection to prevent inadvertent defibrillation

The AED7000 Automatic External Defibrillator, which is a defibrillation device safe, portable and easy to use, can be applied in family and public place to give first aid for the sudden death symptom. Combined with advanced ECG analytical technique from M&B company, the defibrillator can analyze the patients ECG, make a judgement for the patients cardiac condition and indicate whether the defibrillation is needed and the defibrillation strength, which not only enhances the success rate of defibrillation, but also reduces the injury of defibrillation to heart to the utmost extent. There is low requirement for the operator to use the device. The defibrillator will guide the operator to carry out defibrillation treatment via voice prompt step by step, give safety alert if the occasion arises, and can carry out early defibrillation treatment effectively as well as protect the operator farthest, being very applicable to the emergency treatment for the sudden cardiac death patient in family and public place.

## Biphasic Defibrillator

BD-200J



### AED Mode

Wave form	: Biphasic truncated exponential
AED Shock Series	: Energy level 200J
Charge Command	: Automatic after identifying shockable rhythm
Shock Command	: Front Panel button, shock
Controls	: Analyze
Defibrillation Electrode	: Self adhesive, adult pads
Voice and Text prompt	: Extensive text and audible message to guide user

### Heart Rate

Rate	: 10- 250 BPM
Accuracy	: +/-2 BPM
Resolution	: 1 BPM
Tone	: Beep on every QRS detected
Alarm Limit setting	: 10-250(step of 1)

### ECG

Frequency response	: 0.5Hz to 35Hz
Patient isolation	: Optical isolation
Lead selection	: Lead I, II, III
Gain setting	: 0.5, 1.0 and 2.0
CMRR	: >90db
Sweep Speed	: 12.5, 25.0, 50.0 mm/sec
Digital filter	: Digital signal processing for good quality of ECG
ECG traces viewing	: 4 seconds ECG traces can be viewed

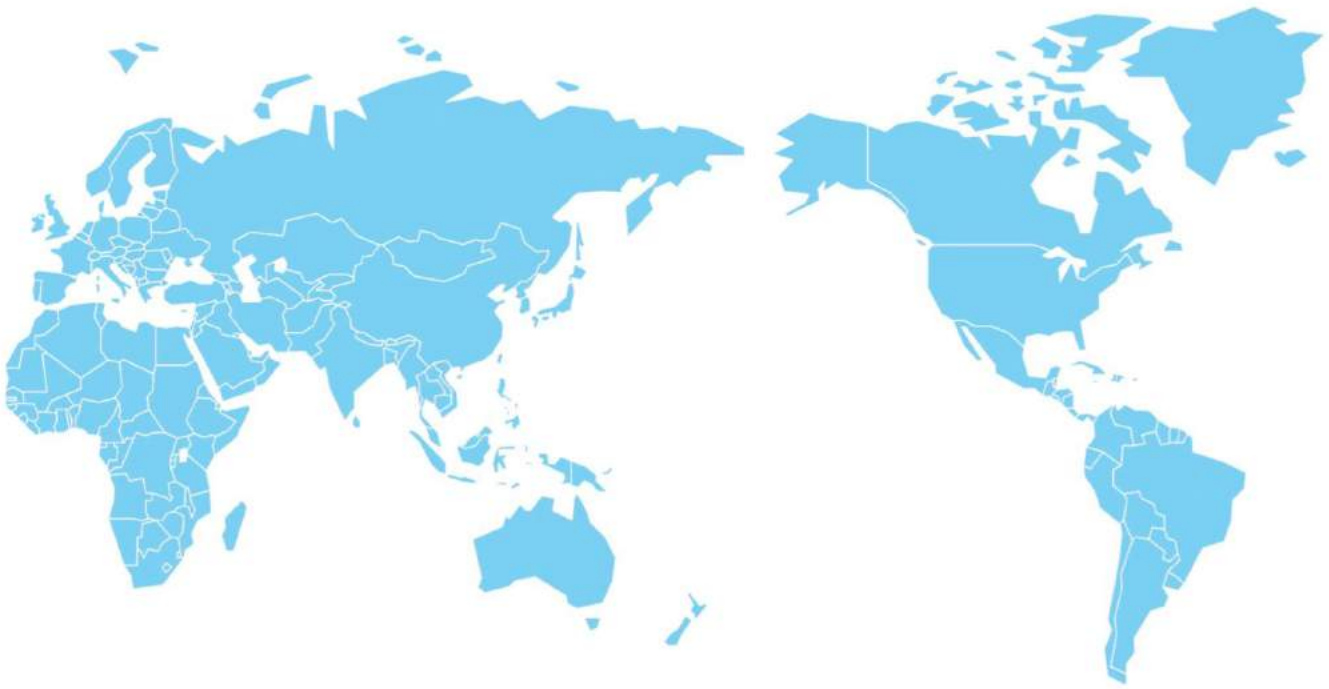
### General

Display	: 7" Colour TFT
Display area	: 150mmx90mm
Dimension	: H280xW330xD220mm(MAX)
Weight	: Approx. 6 Kgs
Unit ON-OFF	: By front panel keyboard, Encoder
Operation	: User adjustable high & low limit,
Audible and visual alarming	
Alarm	: 24 hrs Graphical and Tabular trend of
ECG, Spo2, NIBP EtcO2	
Charge/Discharge	: Charge and Shock button on front
Control panel paddles.	

### Environmental

Operating Temp	: -5 C to +50 C
Humidity	: Up to 95 % non-condensing





Marketed & Service by:

## **INNOVATION SURGICAL COMPANY**

2NO. MANIK PIRTALA LANE, BALITIKURI,

HOWRAH-711113, (W.B), INDIA

MOBILE : +91 9836096417 , +91 9830436926

EMAIL: [innovationsurgicalcompany@gmail.com](mailto:innovationsurgicalcompany@gmail.com)

WEBSITE: [www.innovationsurgical.co.in](http://www.innovationsurgical.co.in)