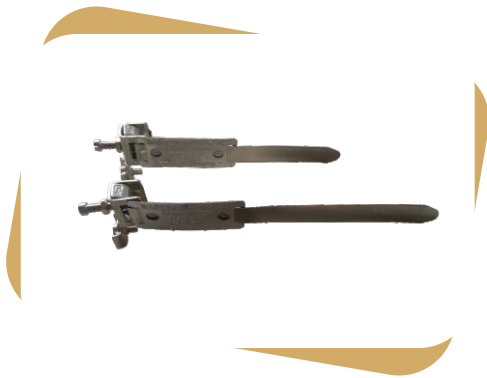


■ Sheet Metal Components (Brass, Copper, Aluminum, Bronze, Steel)

■ Adjustable Earth Clamps



- High performance earth clamp is widely used to connect the pipes to conductor for earthing. Available in three colours - Red for non-corrosive dry atmospheres, Blue or Green for corrosive or humid conditions. Available in three standard band lengths.

Code No	Pipe Diameter	Strip Length
EC-14/1	12mm to 32mm	150mm
EC-14/2	32mm to 50mm	220mm
EC-14/3	50mm to 75mm	330mm
EC-15/1	12mm to 32mm	150mm
EC-15/2	32mm to 50mm	220mm
EC-15/3	50mm to 75mm	330mm

- **Material** : Brass / Bronze
- **Standard** : BS-951
- **Terminal size - A-D 2.5 - 10mm²**
- **Strip** : SS304 (Deburring)
- **Aluminum Label** : White/Green/Blue/Red

■ Earthing Band Clamps



Code/Ref.	Pipe/Tube Dia.	Strip Length	Terminal Section (mm ²)
12	12 to 32mm	120mm	2.5 mm ² - 16 mm ²
19	18 to 50mm	190mm	2.5 mm ² - 16 mm ²
42	18 to 115mm	420mm	2.5 mm ² - 16 mm ²
58	28 to 165mm	580mm	2.5 mm ² - 16 mm ²

- **Material** : Steel / Stainless Steel
- **Strip** : SS304 (Deburring)

■ Sheet Metal Components (Brass, Copper, Aluminum, Bronze, Steel)

■ Earth Tags



- Accessories for cable glands, Earth Tags installed between the Cable Gland and equipment, provide an earth bond connection.

Metric Size	NPT Size	Thickness
M16	1/2"	1.3mm
M20	3/4"	1.3mm
M25	1"	1.5mm
M32	1 1/4"	1.5mm
M40	1 1/2"	1.5mm
M50	2"	1.5mm
M63	2 1/2"	1.5mm
M75	3"	1.5mm
M90	3 1/2"	2.0mm
M100		2.0mm

■ Flat Tape Clips / Saddles



- These are used to secure copper / Aluminum tape to the building. The clip has a hole in the base a fixing to wall / structure with a appropriate screw and plug.

Flat Tape Size
25 x 3mm
38 x 3mm
50 x 3mm

■ Sheet Metal Components (Brass, Copper, Aluminum, Bronze, Steel)

■ LSOH Cable Clips

Designed for use on mineral insulated or soft skin fire Cables. Clips are ideal for One cable fixing which is use high risk applications.



Part No.	Cable mm ²	Cable Diameter
RCHL-26	2L 1.0	6.6mm
RCHL-28	2L 1.5/3L 1.0	7.3mm
RCHL-30	3L 1.5/4L 1.0	7.9mm
RCHL-32	2L 2.5	8.1mm
RCHL-34	3L 2.5/4L 1.5	9.0mm
RCHL-37	2L 4.0/4L 2.5/7L 1.0	9.8mm
RCHL-40	7L 1.5/2H 2.5	10.4mm
RCHL-43	7L 2.5/1H 25	11.5mm
RCHL-47	1H 35 / 2H 6.0	12.6mm
RCHL-51	3H 6.0	13.2mm
RCHL-54	1H 50 / 2H 10	14.4mm
RCHL-59	1H 70 / 3H 10	15.4mm

- **Fixing Clip Material** : Copper
- **Coating** : Polyester Powder Coating, Halogen Free, Low Smoke and Fume, Fire Resistant
- **Color** : Red / Orange / White / Black

■ LSOH Saddles



: Designed for use on mineral insulated or soft skin fire Cables. Saddles are ideal for Two Way Cable fixing which is use high risk applications.

Part No.	Cable mm ²	Cable Diameter
RCFL-272	2L 1.0	6.6mm X 2
RCFL-302	2L 1.5/3L 1.0	7.3mm X 2
RCFL-342	2L 2.5/3L 1.5/4L 1.5	8.1mm X 2
RCFL-382	2L 4.0/7L 1.0/2H 1.5	9.6mm X 2
RCFL-422	4L 2.5/7L 1.5/1H16	10.0mm X 2
RCFL-462	7L 2.5/1H25	11.4mm X 2
RCFL-502	1H35 / 2H6.0	12.6mm X 2
RCFL-542	1H50 / 3H6.0	13.2mm X 2
RCFL-592	2H10 / 4H6.0	14.4mm X 2

- **Two Way Saddle Material** : Copper
- **Coating** : Polyester Powder Coating, Halogen Free, Low Smoke and Fume, Fire Resistant
- **Color** : Red / Orange / White / Black

■ Sheet Metal Components (Brass, Copper, Aluminum, Bronze, Steel)

■ One Hole Clip



- Cable Clip are copper sheet metal products and made of high grade Electrolytic Copper, These used for fixing cable connectors,

Cable-Wire Size
25mm ²
35mm ²
50mm ²
70mm ²
95mm ²
120mm ²
150mm ²
185mm ²
240mm ²
300mm ²

Material : copper electrolytic, BS EN - 13601,C -101

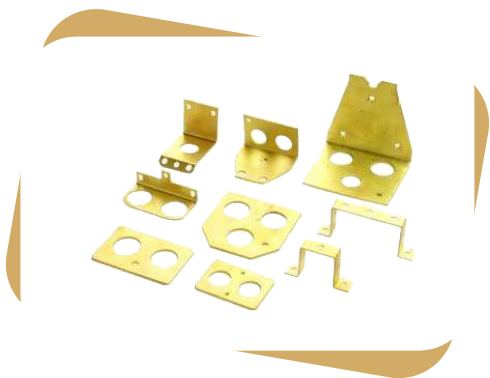
■ Copper Busbars



- **Busbar** : Copper
- **Insulation Cover** : PP V2 FR (Blue / Black)
- **Terminal Sections** : 16 mm² - 13 Pin

■ Sheet Metal Components (Brass, Copper, Aluminum, Bronze, Steel)

■ Cable Gland Brass Plate



- The Brass Plate are use for Street Light Cut Out extension boxes Brass Plate have available One Way, Two Way and Three Way External and Internal.

- **Material** : Brass
- **Hole Size** : 20mm, 25mm or 28mm
- **Finished** : Natural or Nickel Plated.

■ Copper Submersible Rings

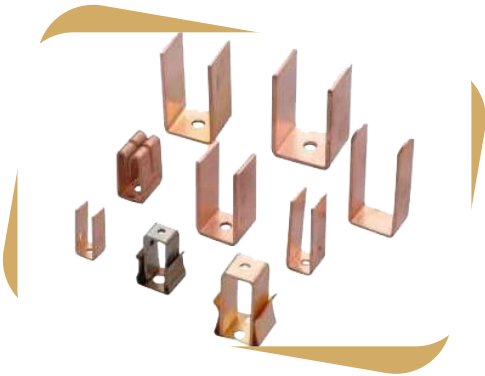


- The Copper Lamination Ring are used in submersible motor pump. These Ring have used EC Grade Copper for vareious type of the design like a (Round,Square...) Installing a motor pump of V3,V4,V5,V6,V8.

- **Material** : Copper
- **Finished** : Natural

■ Sheet Metal Components (Brass, Copper, Aluminum, Bronze, Steel)

■ Copper Electrical Fuse Contacts Parts



- The Copper Sheet Fuse kit kat parts is widely use in the market for having Outstanding performance and custom-designs. All these products are highly demanded for having features like long durability.

- **Material** : Copper or Brass
- **Size** : 63Amp To 400Amp
- **Finished** : Nickel, Tin, Silver Plated

■ Copper Electrical Fuse Contacts Parts



- The Copper Sheet HRC Fuse Parts is widely use in the market for having Outstanding performance and custom-designs. All these products are highly demanded for having features like long durability

- **Material** : Copper or Brass
- **Size** : 63Amp To 400Amp
- **Finished** : Nickel, Tin, Silver Plated

■ Sheet Metal Components (Brass, Copper, Aluminum, Bronze, Steel)

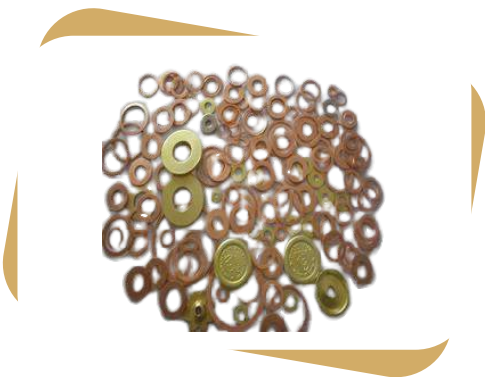
■ Brass And Copper Sheet Cutting Parts



- The Brass And Copper Sheet Cutting Parts are made from very high quality raw material which ensures hassle free work performance at its user end. These Brass And Copper Sheet Cutting Parts are widely used and find their applications in various industrial sectors.

- **Material** : Brass, Copper, Aluminum, Steel
- **Design** : As per customer's drawing.
- **Finished** : Natural, Nickel, Tin, Silver, Zinc Plated

■ Brass Washers Copper washers

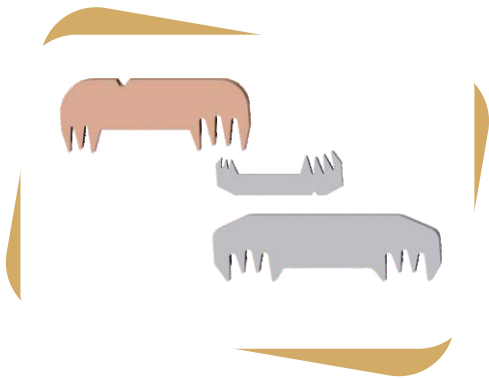


- We are a manufacturer of brass, copper washers widely used in the market.
- We have available various types of the designed washers.

- **Material** : Brass, Copper, Aluminum, Steel
- **Size** : M2mm to M50mm
- **Thickness** : 0.3mm to 6.0mm
- **Finished** : Natural, Nickel, Tin, Silver, Zinc Plated

■ Sheet Metal Components (Brass, Copper, Aluminum, Bronze, Steel)

■ Insulation Preation Connector



- Made from High-Conductivity copper & aluminium

RUN	TAP
1/0 - 8 AWG (50 - 6 mm ²)	2 - 8 AWG (35 - 6 mm ²)
4/0 - 1/0 AWG (95 - 50 mm ²)	1/0 - 6 AWG (50 - 16 mm ²)
4/0 - 1/0 AWG (95 - 50 mm ²)	4/0 - 1/0 AWG (95 - 50 mm ²)
350 - 4/0 AWG (185 - 95 mm ²)	4/0 - 1/0 AWG (95 - 6 mm ²)
350 - 4/0 AWG (185 - 95 mm ²)	350 - 4/0 AWG (185 - 95 mm ²)
500 - 350 kcmil (240 - 185 mm ²)	4/0 - 4 AWG (95 - 25 mm ²)

■ Earthing Products

● Application

The Earthing Connector is designed to group together the grounds of a floor.

It is to be installed in the building pillar near the floor supply grid according to the rules in force.

The earth cutting blade is implemented at the bottom of the earth wiring. It allows opening of the earth circuit when taking measures.

■ Earthing Breaker for Rail



- **Bus Bar** : Copper
- **Bolt** : Brass
- **Clips** : Steel
- **Terminal Sections** : 6 mm² - 25 mm²

■ Earthing Breaker



- **Clamp & Link** : Brass & Copper
- **Bolt** : brass
- **Base** : PP V2 FR
- **Terminal Sections** : 16 mm² - 35 mm² (Low isolation bar)

■ Earthing Products

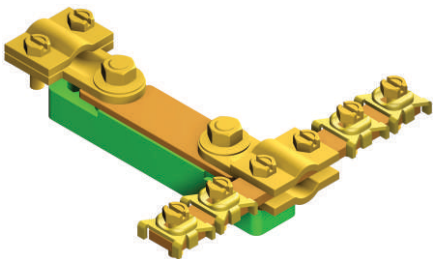
● Application

The Earthing Connector is designed to group together the grounds of a floor.

It is to be installed in the building pillar near the floor supply grid according to the rules in force.

The earth cutting blade is implemented at the bottom of the earth wiring. It allows opening of the earth circuit when taking measures.

■ Earthing Breaker With Rail



- **Clamp & Link** : Brass & Copper
- **Bus Bar** : Copper
- **Bolt** : brass
- **Clips** : Steel
- **Base** : PP V2 FR
- **Terminal Sections** : 6 mm² - 25 mm² (Bus Bar)
- **Terminal Sections** : 16 mm² - 35 mm² (Low isolation bar)

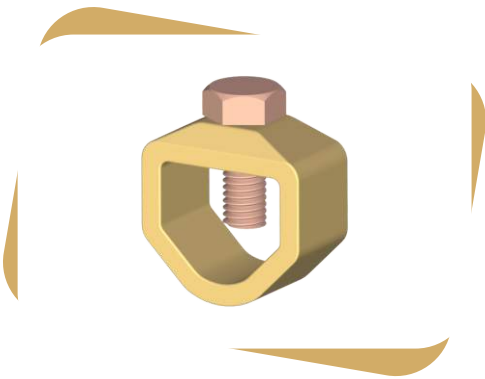
■ Disconnecting Link With Ceramic Base



- **Clamp & Link** : Brass & Copper
- **Bolt** : brass
- **Base** : porcelain insulator with Steel Plated
- **Terminal Sections** : 16 mm² - 35 mm² (High isolation bar)

■ Earthing Products

■ Earth Rod to Tape Clamp

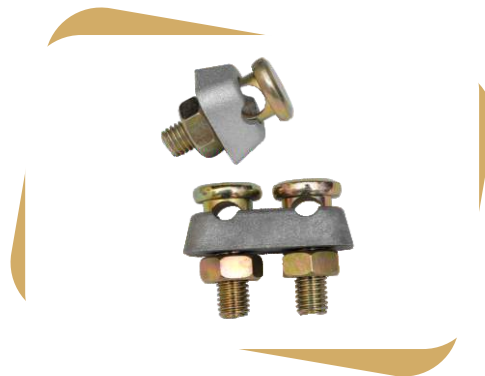


The Clamp are used joining to Ground Earth Rod and Copper Tapes ensure perfect fit and lasting connection and excellent resistance to corrosion.

Rod Dia		Tape Size
Inches	MM	mm
5/8"	14	30x6
3/4"	20	30 x6

- **Clamp** : Copper Alloy
- **Bolt** : Brass / Stainless Steel - M10

■ Earthing Connector Single & Double End Clamp



The Clamp joining to the round bar and metal strip.

- **Clamp Body** : Brass & Aluminium
- **Bolt & Nut** : Steel Nickel Plated
- **Conneccion** : Rod dia. - 08mm to 10mm

■ Earthing Products

■ Claws Connection



The claw fittings are used to connect conductors to each other or can also be used to fix an earth cable or a ground braid on a wire cable tray.

Cable Size
4 to 30mm ²
10 to 50mm ²

- **Cable Section** : 4 - 30mm²
- **Bolt** : M6-20mm
- **Body** : Brass Tin Plated
- **Bolt / Nut** : Steel Zn Plated

■ Tee Shape Cable Lug



Clamp with T-clamp for cable connection.

- **Material** : Brass body
- **U tightener** : M6 brass
- **Bolt** : Brass with copper washer
- **Capacity** : Cable from 10 to 70mm² max.

■ LPS (Lighting & Protection System)

■ Taper Pointed Air Rod



- Multi-point air terminal are copper alloys, Suitable for Lightning protection systems.

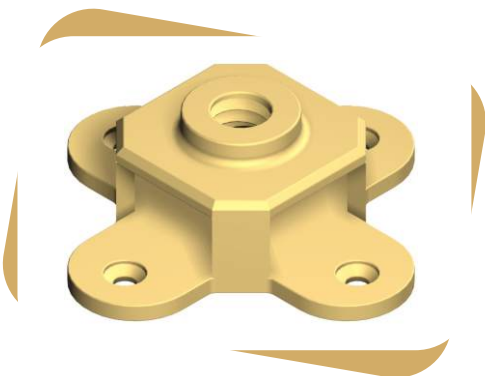
Rod Diameter (mm)
5/8"

- Taper Pointed Air Rod
Can be installed with or without multiple point as under

Rod Length (mm)	Rod Dia (mm)	Thread Dia (mm)
500	15	16
1000	15	16
2000	15	16

Material : copper C-101

■ Air Terminal Base



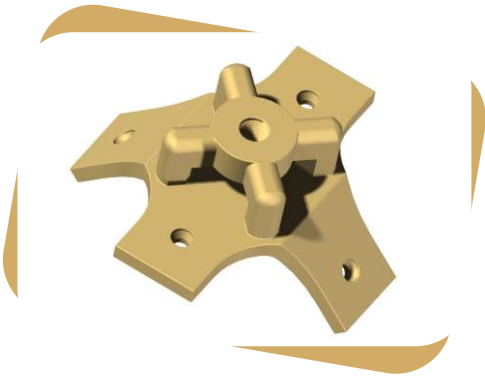
- Tape saddle are copper alloys or Aluminium suitable for use with an air rod fixes on to roof network of the lightning protection system connecting the tape to the air rod

Thread Dia (mm)	Tape size (mm)
5/8"	25x3
3/4"	25x6

Material : copper alloys, ASM C83600,BS EN 1982,LG-2

■ LPS (Lighting & Protection System)

■ Ridge Shddle

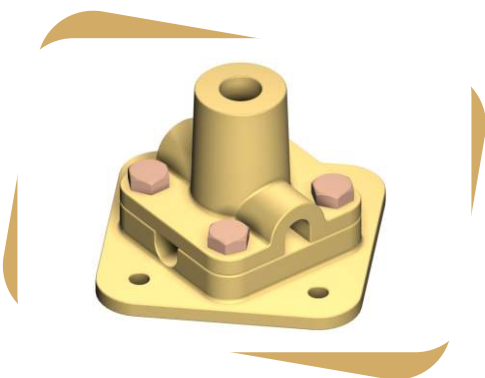


- Ridge saddle are copper alloys these ridge saddles fix on to the roof networking of the lightning protection system connecting the tapeto the air rod

Thread Dia (mm)	Tape size (mm)
5/8"	31x3
3/4"	31x6

Material : copper alloys, ASM C83600,BS EN 1982,LG-2

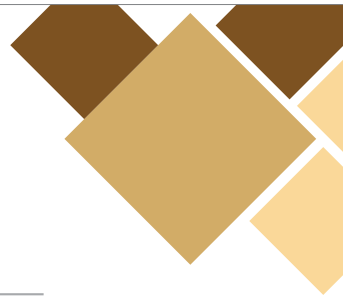
■ Flat Saddle



- Flat Saddle are copper alloy used with an air rod fixes, onto the roof or flat roof of building network of lightning protection system connecting the cable to the air rod.

Cable-Wire	Thread Dia
50 mm ²	16mm
70 mm ²	16mm
95 mm ²	16mm

Material : copper alloys, ASM C83600,BS EN 1982,LG-2
Bolt : Brass or Steel



■ LPS (Lighting & Protection System)

■ Plate Type Test Clamp

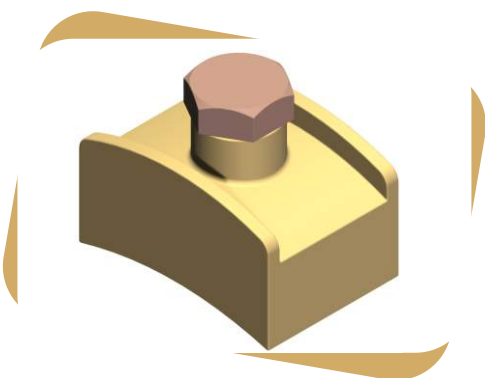


- Plate type test clamp are copper alloys
the fixes to tape to tape use for lightning protection system

Tape size
(mm)
26x12

Material : copper alloys, ASM C83600,BS EN 1982,LG-2
Bolt : brass or steel

■ Watermain Pipe Bond



- Water main bond are copper alloys
these type of bonds are used for bonding copper tape -
to water main pipes into the earthing lightning protection system

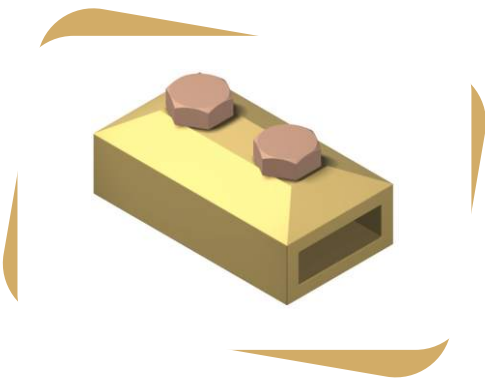
Tape size
(mm)
26x3

Material : copper alloys, ASM C83600,BS EN 1982,LG-2
Bolt : brass or steel



■ LPS (Lighting & Protection System)

■ Oblong Test Clamp / Junction Clamp

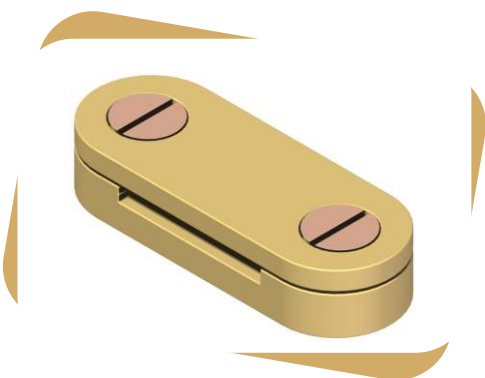


- Test clamp are copper alloys design for tape to tape jointing

Tape size (mm)
26x8

Material : copper alloys, ASM C83600,BS EN 1982,LG-2
Bolt : brass or steel

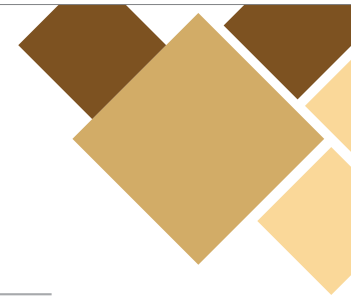
■ DC Tape Clip



- Dc tap clip are copper or Aluminium alloys for secures the tape conductor the tape fits into the support and is secured by tow screw

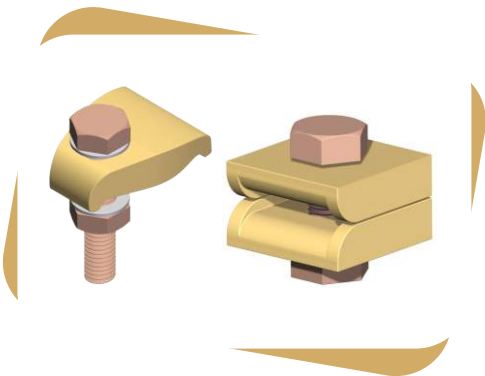
Tape size (mm)
20x3
25x3
25x4
25x6
31x3
31x6
38x3
38x5
38x6
50x3
50x4
50x6

Material : copper alloys, ASM C83600,BS EN 1982,LG-2
Bolt : brass or steel



■ LPS (Lighting & Protection System)

■ B Bond / RWP Bond

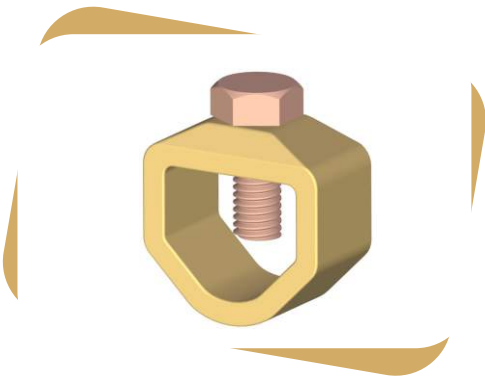


- Rwp bond are copper alloys used for bonding tapes to rainwater pipes

Tape size
(mm)
26x3

Material : copper alloys, ASM C83600,BS EN 1982,LG-2
Bolt : brass or steel

■ Rod To Tape Clamp



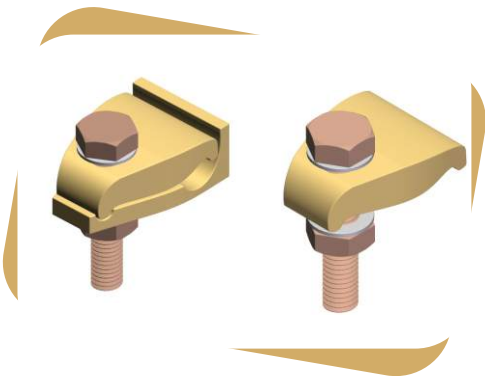
- Ground rod clamp are copper alloys used for joining to copper tapes these clamps are available to suit different sizes of earth rods and copper tapes ensure perfect fit and lasting connection and excellent resistance to corrosion

Rod Dia		Tape Size
Inches	MM	mm
1/2"	12.7	26X12
5/8"	16	26X12
3/4"	20	26X10
5/8"	16	30X2
3/4"	20	30X2
5/8"	16	40X12
5/8"	16	51X8
3/4"	20	51X12
1/2"	12.7	26X20
5/8"	16	26X18
3/4"	20	26X10
1"	25	26X10

Material : copper alloys, ASM C83600,BS EN 1982,LG-2
Bolt : brass or steel

■ LPS (Lighting & Protection System)

■ Tower Earth Clamp



- Tower clamp are copper alloy and are designed for bonding copper conductor to metal surfaces.

Cable-wire	Channel Thickness
70	10mm
120	10mm

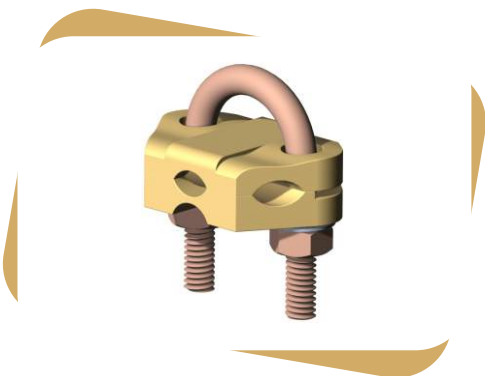
Material : copper alloys, ASM C83600,BS EN 1982,LG-2
Bolt : Brass or Steel Size : 10mm or 12mm

- Tower Tower clamp are copper alloy and are designed for bonding copper and aluminium conductors to steel structures.

Cable-wire	Channel Thickness
8mm	10mm

Material : copper alloys, ASM C83600,BS EN 1982,LG-2
Bolt : Brass or Steel Size : 10mm or 12mm

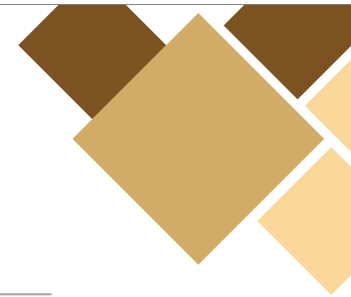
■ Rod To Cable Clamp



- Rod to cable clamp are copper alloy Double plated Clamps are Suitable for connecting earth rod with cable and round conductors.

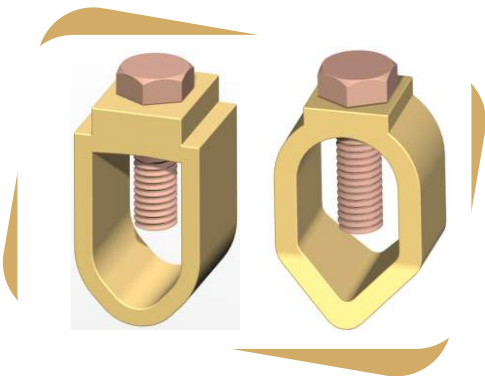
Rod Dia	Cable-wire
5/8"	16-95mm ²
3/4"	16-70mm ²
5/8"	70-185mm ²
3/4"	70-150mm ²
5/8"	150-300mm ²
3/4"	150-300mm ²

Material : copper alloys, ASM C83600,BS EN 1982,LG-2
U-Bolt : Copper And Brass



■ LPS (Lighting & Protection System)

■ Rod To Cable Clamp

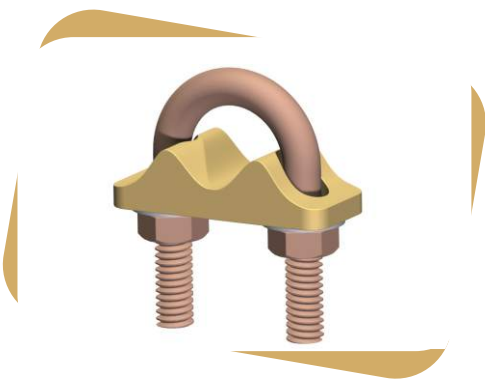


- Rod to cable clamp are copper alloy. These clamps are used for joining earth rods to copper cables with excellent resistance to corrosion.

Rod dia	cable-wire
3/8"	6-35mm ²
1/2"	16-50mm ²
5/8"	16-70mm ²
3/4"	35-95mm ²
1"	70-120mm ²

Material : copper alloys, ASM C83600,BS EN 1982,LG-2
Bolt : Brass or Steel

■ E-Clamp



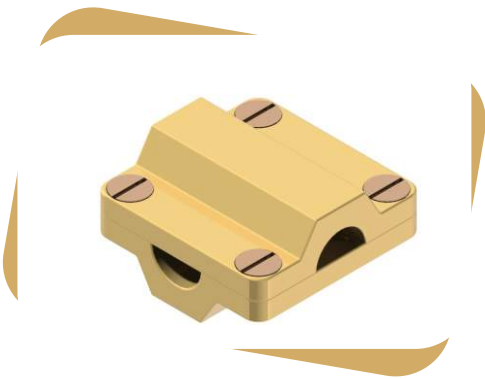
- U-bolt rod clamp are copper alloy base, These clamps are use to connect tape to the earth rod available in signal plate and dabble plate. Application being the same but suitable for fixing in different angles.

Rod dia	tape Size
Inches	
5/8"	25x3
3/4"	25x3
1"	25x3
5/8"	25x3

Material : copper alloys, ASM C83600,BS EN 1982,LG-2
U-Bolt : Copper And Brass

■ LPS (Lighting & Protection System)

■ Square Conductor

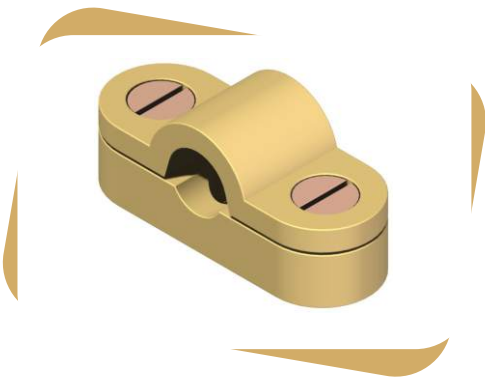


- Square conductor clamp are copper alloy for four way connectors are suitable for crossing over cable making straight through joint or these connections conductor.

 cable-wire
50 mm ²
70 mm ²
95 mm ²

Material : copper alloys, ASM C83600,BS EN 1982,LG-2
Bolt : Brass or Steel

■ Conductor Saddle



- Cast of high-strength copper alloy
- Support for Air Rod & Cable

 CONDUCTOR SIZE
35 mm ²
50 mm ²
70 mm ²
95 mm ²

■ LPS (Lighting & Protection System)

■ Tee Clamp



- Tee Clamp are copper alloys designed for Tee joints.

Cable-wire
50-70 mm ²
95-120 mm ²

Material : copper alloys, ASM C83600,BS EN 1982,LG-2
Bolt : Brass or Steel

■ Rod Brackets



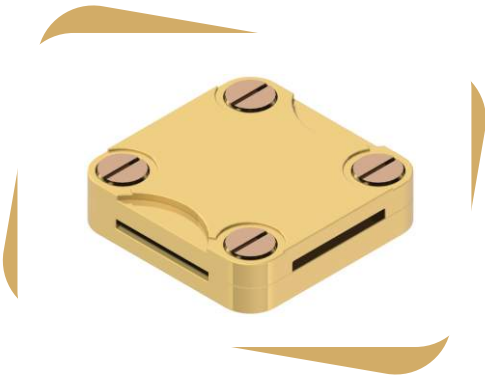
- Rod brackets are copper alloy,These are being used for providing projection from the building wall or face. Rod brackets are mainly used with rod to tape coupling where it is not possible to fit a saddle on the roof and the air rod has to be fitted on the side of the building.

Rod Size
15mm Dia

Material : copper alloys, ASM C83600,BS EN 1982,LG-2

■ LPS (Lighting & Protection System)

■ Square Tape Clamp

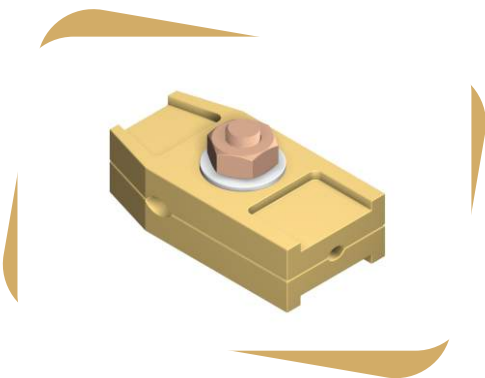


- Cast Square tape clamp support are copper or Aluminium alloys are suitable for four way crossing connection and is secured by four screw

Tape size (mm)
25x3
25x4
25x6
38x3
38x6
50x3
50x6

Material : copper alloys, ASM C83600,BS EN 1982,LG-2
Bolt : Brass or Steel

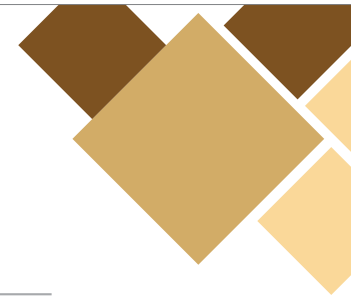
■ Junction Clamp



- JuJunction clamp are copper alloy,these clamps for forming straight through joints or for disconnection and test purpose.
- Also available for connecting 8mm diameter conductor to 25 x 3mm tape.

Cable and Tape Size	Wt/Kg.
35-50mm ² - 25 x3mm	0.200
70mm ² - 25 x 3mm	0.200
95mm ² - 25 x 3 mm	0.200

Material : copper alloys, ASM C83600,BS EN 1982,LG-2
Bolt : Brass or Steel



■ LPS (Lighting & Protection System)

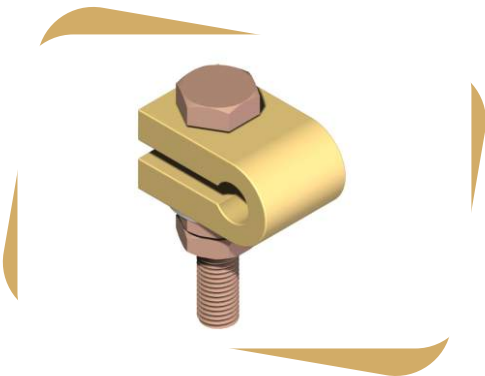
■ B-Bond Clamp



- Cast of high-strength copper alloy
- Used for Connect cable to Earth Rod

ROD DIA.
3/8" - 9.5 mm
5/8" - 16 mm
3/4" - 20mm

■ Split Connector



- Split clamp are copper alloy used with threaded and unthreaded rods, suitable for connecting earth rod with cable lugs.

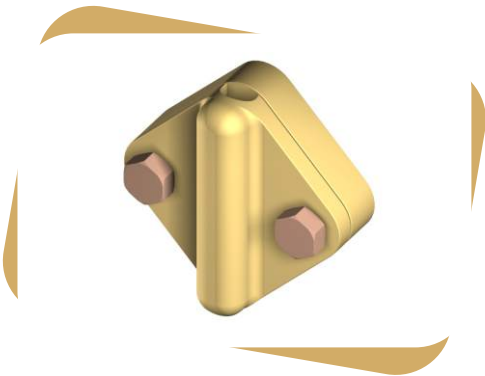
Rod dia
3/8" - 9.5mm
5/8" - 14mm
5/8" - 16mm
3/4" - 20mm

Material : copper alloys, ASM C83600,BS EN 1982,LG-2
Bolt : Brass or Steel Size : 12mm



■ LPS (Lighting & Protection System)

■ Test Clamp

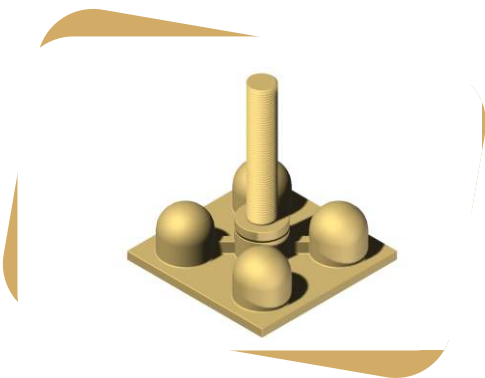


- Cast Test clamp are copper alloy, these clamps are suitable for end to end joints.

Cable-Wire Size
50mm ²
70mm ²
95mm ²

Material : copper alloys, ASM C83600,BS EN 1982,LG-2
Bolt : Brass or Steel

■ Earth Point



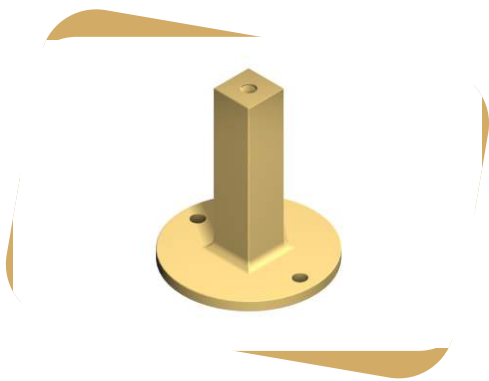
- Earth point are copper alloy, For providing earthing continuity and a multiple bonding point, and are available with one,two and four hole connection.

Frant Plate Tape-wire	No of Hole
No Frant Plate	4
25 x 3mm or 70mm ²	2
25 x 3mm or 8mm dia	2
No Frant Plate	2

Material : copper alloys, ASM C83600,BS EN 1982,LG-2
Bolt : Brass or Steel

■ LPS (Lighting & Protection System)

■ Back Plate Hole Fast

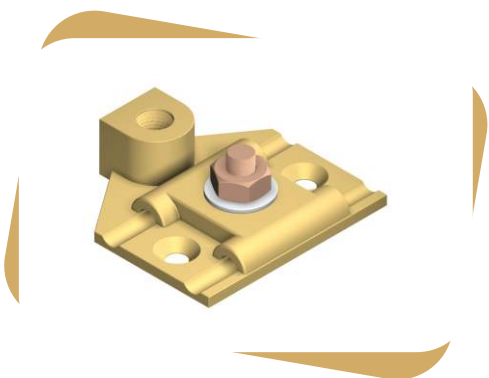


- Back Plate Holdfast Stem are copper alloy, These used with an appropriate DC Clip is to be secured away from the face of wall.

Stem Hight
75mm

Material : copper alloys, ASM C83600,BS EN 1982,LG-2
Screw : Brass M6

■ Air Rod Base



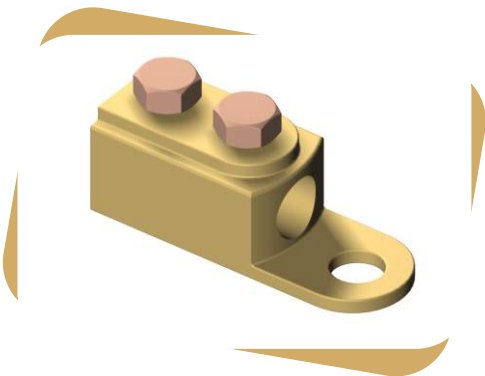
- Air terminal rod base are copper alloy, these used for mounting of air rods either horizontally or vertically.

Rod Size
8mm

Material : copper alloys, ASM C83600,BS EN 1982,LG-2
Bolt : Brass or Steel

■ LPS (Lighting & Protection System)

■ Straight Cable Socket

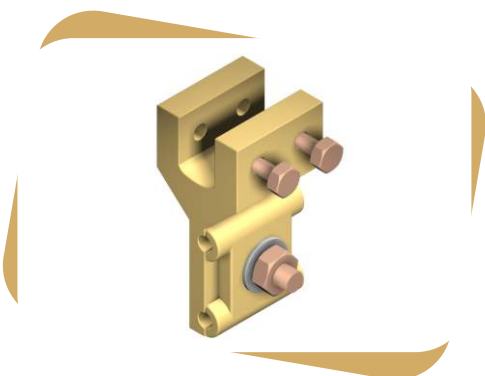


- Cable Socket are copper alloy, These socket are used for bonding copper and aluminium cable and conductor to steel work.

Cable-Wire dia	Palm hole
8mm	12mm

Material : copper alloys, ASM C83600,BS EN 1982,LG-2
Bolt : Brass or Steel

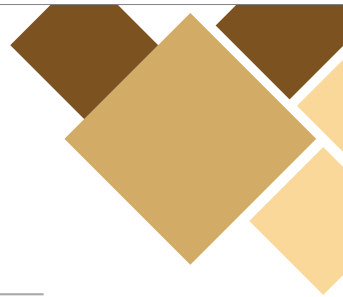
■ Metalwork Bond



- CastMetalwork bond are copper alloy, These clamps are used to fixed conductor on the tower structure, H-Beam structure or angle iron of the lightning protection systems.

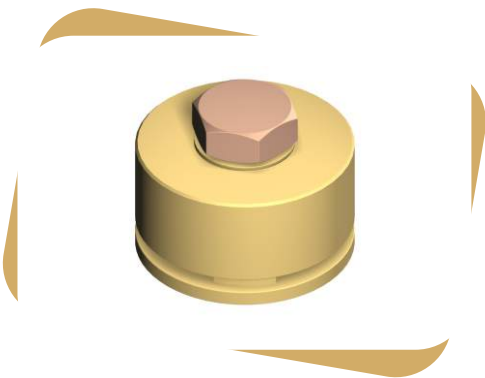
Cable-Wire dia	Beam thick
8mm	13mm Max.

Material : copper alloys, ASM C83600,BS EN 1982,LG-2
Bolt : Brass or Steel



■ LPS (Lighting & Protection System)

■ Screw Down Test Clamp

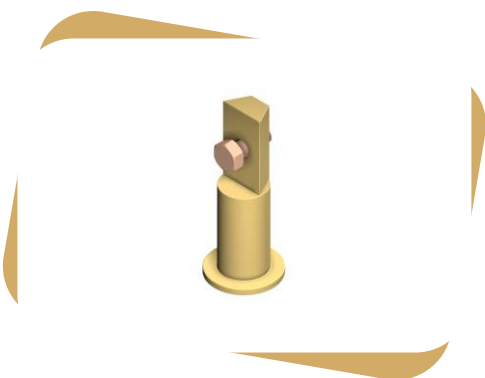


- Screw down clamp are copper alloy base. These clamps are provide easy access to copper tape conductors for inspection or testing.

Tape Size
MM
26x8

Material : copper alloys, ASM C83600,BS EN 1982,LG-2

■ Rod To Tape Coupling



- Cast Rod to tape coupling are copper alloy, Used in conjunction with the air rod brackets to connect the air rod and tapes. The coupling is screwd onto the air rod and then connects to the tape with the bolts.

Rod Dia
5/8"
3/4"

Material : copper alloys, ASM C83600,BS EN 1982,LG-2
Bolt : Brass or Steel



■ LPS (Lighting & Protection System)

■ Square Clamp

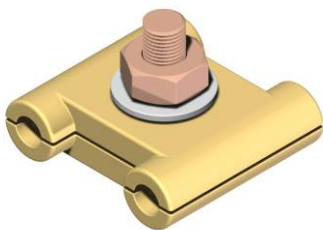


- Square clamps are copper alloy, These clamps are used for forming cross or tee joints.

Cable-Wire dia
8mm

Material : copper alloys, ASM C83600,BS EN 1982,LG-2
Bolt : Brass or Steel

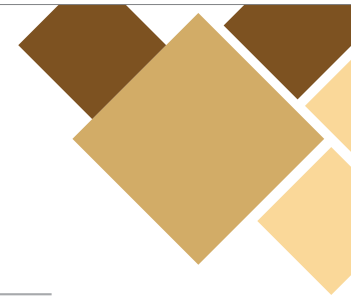
■ Jointing Clamp



- Jointing clamps are copper alloy, These clamps are used for forming straight through two cable or rod joints.

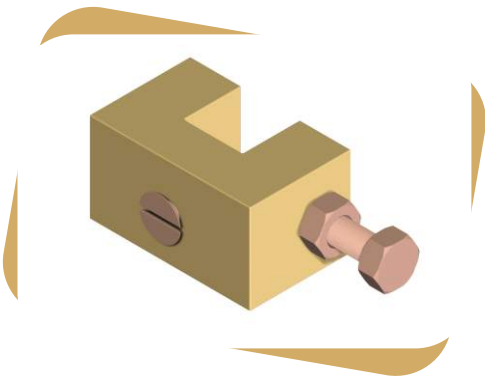
Cable-wire-dia	Wt/Kg.
8mm	0.170

Material : copper alloys, ASM C83600,BS EN 1982,LG-2
Bolt : Brass or Steel



■ LPS (Lighting & Protection System)

■ Glazing Bar Holdfast



- Bar holdfast are copper alloy, These holdfasts can be used for attaching DC Clip etc.. Onto a narrow projection or extension such as angle steel structure.

Maximum Bar
Width
12mm

Material : copper alloys, ASM C83600,BS EN 1982,LG-2
Bolt : Brass or Steel

■ Re-Bar Clamp



- Bar clamp are copper alloy, These clamps are used for bonding to handrails,re-inforcing bars, steem pipes etc..

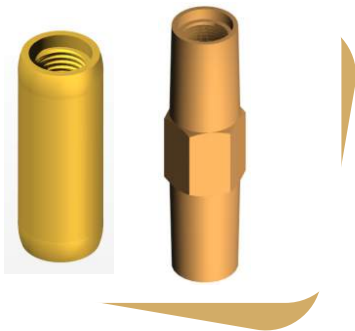
Cable-wire dia	Re-bar Dia
8mm	8-18mm
8mm	8-38mm

Material : copper alloys, ASM C83600,BS EN 1982,LG-2
Bolt : Brass or Steel



■ LPS (Lighting & Protection System)

■ Coupling

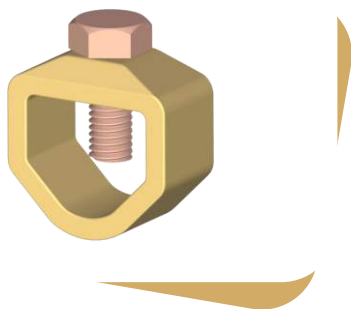


- Coupling are copper alloy made of high grade Silicon Bronze, Aluminium Bronze and Brass for high strength with counted bore for protecting the rod threads from damage. Also available ROUND & HEXAGON

Rod Size
1/2"
5/8"
3/4"

Material : copper alloys, ASM C83600, C95600,IS3091

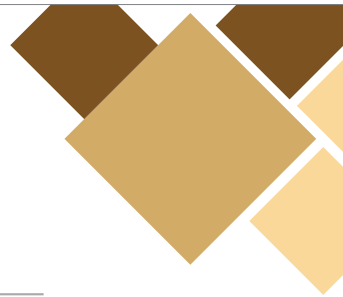
■ Earth Rod to Tape Clamp



The Clamp are used joining to Ground Earth Rod and Copper Tapes ensure perfect fit and lasting connection and excellent resistance to corrosion.

Rod Dia		Tape Size
Inches	MM	mm
5/8"	14	30x6
3/4"	20	30 x6

- **Clamp** : Copper Alloy
- **Bolt** : Brass / Stainless Steel - M10



■ LPS (Lighting & Protection System)

■ One Hole Clip



- Cable Clip are copper sheet metal products and made of high grade Electrolytic Copper, These used for fixing cable connectors,

Cable-Wire Size
25mm ²
35mm ²
50mm ²
70mm ²
95mm ²
120mm ²
150mm ²
185mm ²
240mm ²
300mm ²

Material : copper electrolytic, BS EN - 13601,C -101

■ Copper Tape Clip



- Made from Copper

CONDUCTOR SIZE
25 x 3 mm
38 x 3 mm
50 x 3 mm

■ LPS (Lighting & Protection System)

■ Tape Clip

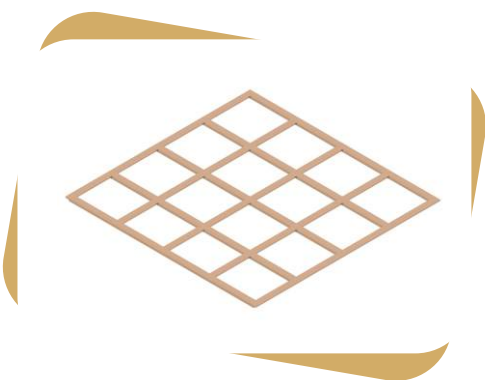


- Tape clip are used to hold the tape to the structure. These are fixed to the surface by using screws.

Tape Size
25 x 3
38 x 3
50 x 3
25 x 6
38 x 6
50 x 6

Material : Copper , Brass and Aluminium

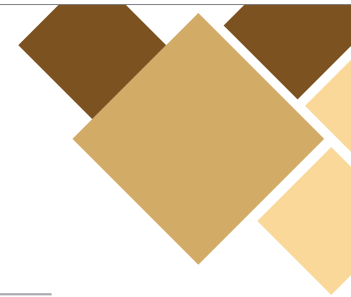
■ Lattice Copper Earth Plate



- Earth plates are used for mainly grounding area for purposed earthing protection. Earth Plates are made of high electrolytic Lattice copper earth plates.

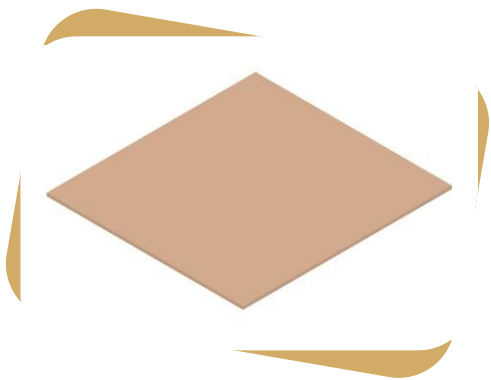
Plate Size	Tape Size	No Of Strip
500x500	- 25x2mm	10
500x500	- 25x3mm	10
600x600	- 25x2mm	10
600x600	- 25x3mm	10
900x900	- 25x2mm	10
900x900	- 25x3mm	10

Material : Copper C101, BS EN 13601



■ LPS (Lighting & Protection System)

■ Solid Copper Earth Plate



- Earth plates are used for mainly grounding area for purposed earthing protection. Earth Plates are made of high electrolytic solid copper sheets and also made copper bonded.

Plate Size
500mm x 500mm x 1.5mm
500mm x 500mm x 3mm
600mm x 600mm x 1.5mm
600mm x 600mm x 3mm
900mm x 900mm x 1.5mm
900mm x 900mm x 3mm

Material : Copper C101, BS 2874

■ Earth Bars For Housing



- Earth bar are copper sheet metal products and made of hard drawn copper are used for fitting into slots provided in the earth housings where multiple connection are required to the earth rod.

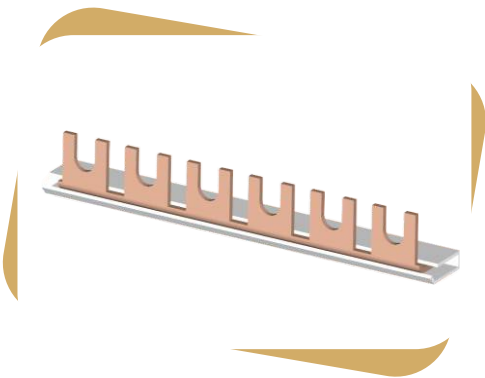
Lenth x Weith x Tickness
300mm x 31mm x 6mm
300mm x 31mm x 5mm
300mm x 31mm x 3mm
250mm x 31mm x 6mm
250mm x 31mm x 5mm
250mm x 31mm x 3mm
200mm x 25mm x 6mm
200mm x 25mm x 5mm
200mm x 25mm x3mm

Material : copper electrolytic, BS EN - 13601,C -101

Note : Hole Size As per Customer's require.

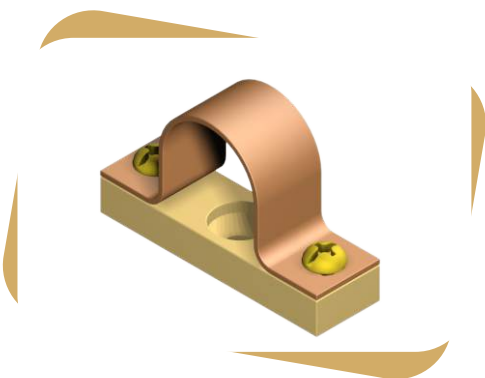
■ LPS (Lighting & Protection System)

■ Copper Bus Bar



- Made from High-Conductivity copper
- Available in Single pol, Two pol, Three pol
- Frock type & Pin type
- Length 1 meter

■ Pipe Clamp



- Made from High-Conductivity copper & Brass

PIPE SIZE
1/2"
3/4"
1"
1 1/2"

■ Electric Holder Parts

■ B-22 Holder



■ B-22 Holder



■ B-22 Holder



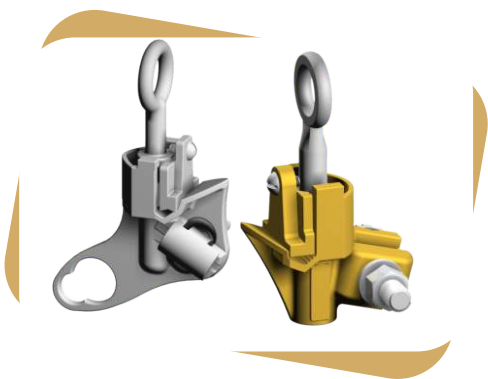
■ B-22 Holder Ring



- We are leading manufacturer of electrical holders accessories .
- These parts using for Batten, Angel, Pendant Holders technology; these bulb holders find extensive use in Industrial and House.
- Owing to their good electrical conductivity and wear & tear resistance, these are widely demanded in the domestic market. Our quality norms are strictly exercised right from the raw material procurement stage till the dispatch of finished products keeping up with the Quality.

■ Earthing & Grounding Systems

■ Overhead Connectors - Hot Line Clamps



- Live line tool compatible
- Choose bronze alloy or aluminum alloy castings
- Easy installation
- Extended jaw for improved connection
- Corrosion resistant

■ Center Bolt Parallel Groove Hot Tap Clamps



- Wide temperature range lubricant prevents seizing of protected threads
- Tap wire positively secured to clamp during installation and removal by hex head bolt and pressure pad
- Main and tap clamped securely as clamp is tightened
- Copper clamps for use on copper conductors only

■ Earthing & Grounding Systems

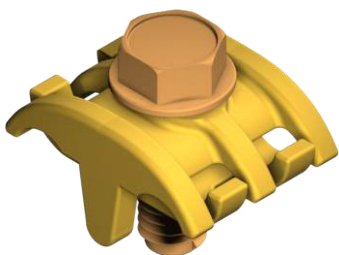
■ Aluminum Parallel Groove Clamps



ONE- AND TWO-BOLT ALUMINUM PARALLEL GROOVE CLAMPS

- Cast of high-strength copper alloy & aluminum alloy
- Copper inserts always face each other
- Order prefilled with oxide inhibitor for use on copper to aluminum
- Clamps are high-strength, heat-treated cast aluminum alloy
- Galvanized-steel carriage bolt, nut and lockwasher standard
- Extruded aluminum alloy, furnished with hex head bolt

■ Jumper Clamps



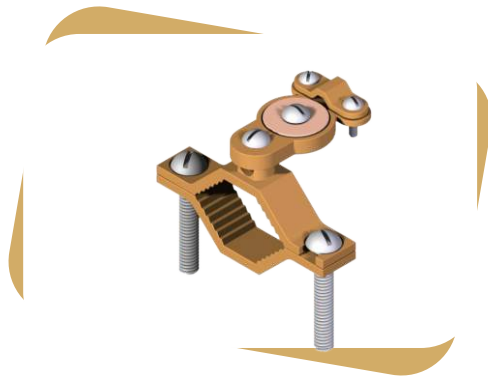
ONE SIZE FITS ALL REQUIREMENTS FROM #8 SOLID COPPER TO 1/0 ACSR OR 2/0 COPPER.

- Cast of high-strength copper alloy
- Furnished with silicon bronze hex washer head bolt
- Parallel groove design — no need to remove bolt for installation
- Available plated, unplated or with plating in one groove



■ Earthing & Grounding Systems

■ Grounding Clamps



- Cast of high-strength copper alloy
- Conduit size ½ or ¾ EMT and ½ rigid
- Hub 360* Swings

WATER PIPE SIZE	CONDUCTOR RANGE
½ to 1"	6 sol.
1¼ to 2"	6 sol.
2½ to 4"	6 sol.
4½ to 6"	6 sol.

■ Grounding Clamps



- Cast of high-strength copper alloy
- Matching serrations assure positive lock of adapter to clamp
- For Bonding bar or Armored Copper wire

WATER PIPE SIZE	GROUND WIRE	ADAPTOR
½ to 1"	2 str.	4/0 str.
1¼ to 2"	2 str.	4/0 str.
2½ to 4"	2 str.	4/0 str.
4½ to 6"	2 str.	4/0 str.



■ Earthing & Grounding Systems

■ Grounding Clamps

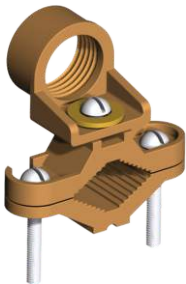


- Cast of high-strength copper alloy

WATER PIPE SIZE	GROUND WIRE
½ to 1"	#2 str.
1¼ to 2"	#2 str.
2½ to 4"	#2 str.
4¼ to 6"	#2 str.

CONDUIT HUB SIZE	GROUND WIRE
½	2/0 str.
¾	3/0 str.
1"	3/0 str.

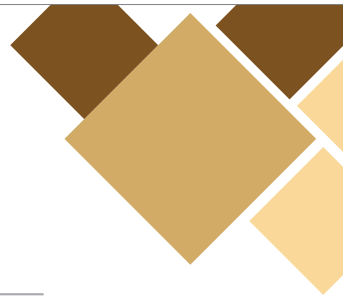
■ Grounding Clamps



- Cast of high-strength copper alloy

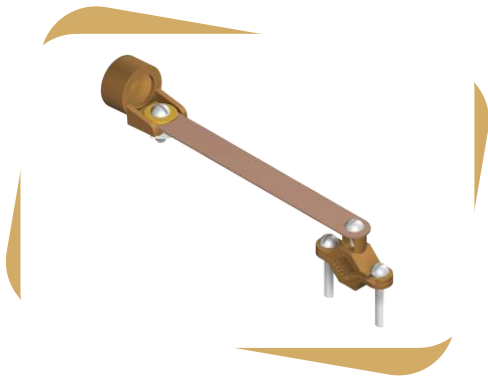
WATER PIPE SIZE	GROUND WIRE
½ to 1"	2 str.
1¼ to 2"	2 str.
2½ to 4"	2 str.
4¼ to 6"	2 str.

CONDUIT HUB SIZE	GROUND WIRE
½	4 str.
¾	4 str.
1"	4 str..



■ Earthing & Grounding Systems

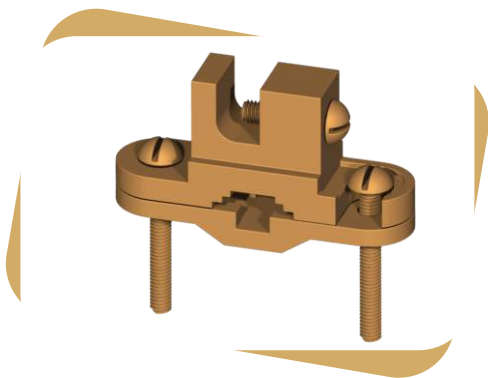
■ Grounding Clamps



- Cast of high-strength copper alloy
- Ground Clamp for conduit with copper strip
- Copper Strap helps protect conduit from water system vibration

WATER PIPE SIZE	CONDUIT HUB SIZE	GROUND WIRE
½ to 1"	½	6 sol.
1¼ to 2"	¾	2/0 str.
2½ to 4"	1"	3/0 str.

■ Grounding Clamps

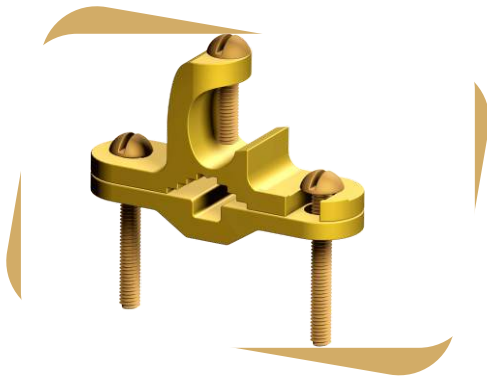


- Cast of high-strength copper alloy

WATER PIPE SIZE	REBAR SIZE	GROUND ROD SIZE	CONDUCTOR RANGE
½ to 1"	¾ to 1"	¼ to 1"	#10 sol. #2 str.

■ Earthing & Grounding Systems

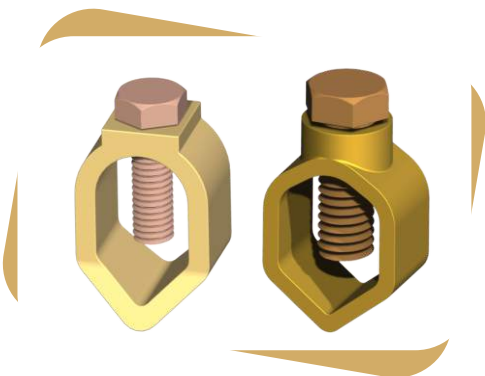
■ Grounding Clamps



- Cast of high-strength copper alloy

WATER PIPE SIZE	REBAR SIZE	GROUND ROD SIZE	CONDUCTOR RANGE
½ to 1"	¾ to 1"	½ to 1"	#10 sol. #2 str.

■ Ground Rod Clamps

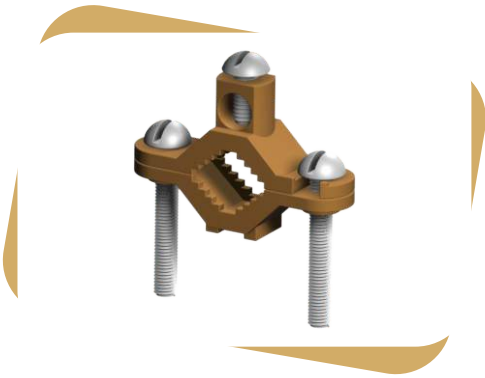


- Cast of high-strength copper alloy

NOMINAL ROD DIA.	
Inch	mm
⅜	9.5
½	12.7
⅝	15.8
¾	19.0

■ Earthing & Grounding Systems

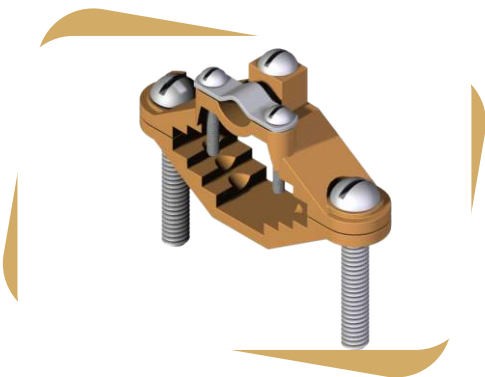
■ Grounding Clamps



- Cast of high-strength copper alloy

WATER PIPE SIZE	CONDUCTOR RANGE
½ to 1"	2 str.
1¼ to 2"	2 str.
2½ to 4"	2 str.
4¼ to 6"	2 str.

■ Grounding Clamps



- Cast of high-strength copper alloy
- For bonding bar or armored copper wire

WATER PIPE SIZE	CONDUCTOR RANGE
½ to 1"	4 str.
1¼ to 2"	4 str.

■ Earthing & Grounding Systems

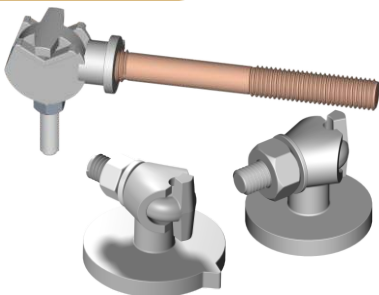
■ Grounding Clamps



- Cast of high-strength copper alloy
- For connecting armored cable or bonding bar to water pipe

WATER PIPE SIZE	CONDUCTOR RANGE
½ to 1"	6 sol.
1¼ to 2"	6 sol.
2½ to 4"	6 sol.
4¼ to 6"	6 sol.

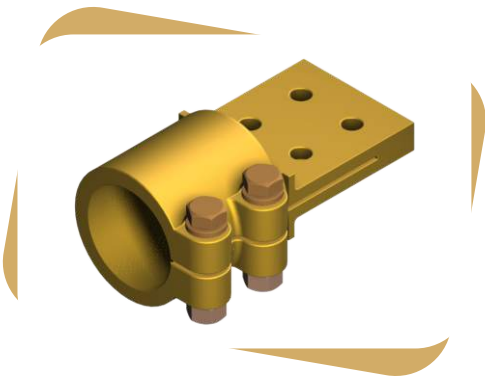
■ Bronze Terminal Caps (Eye Bolt)



- Cast of high-strength copper alloy
- Transformer Tank ground connector

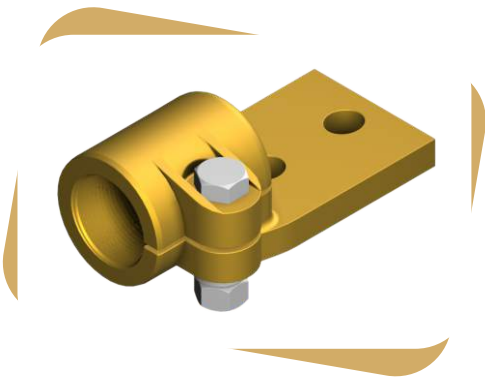
■ Earthing & Grounding Systems

■ Copper Alloy Stud Connector



- Cast of high-strength copper alloy
- Furnished with silicon bronze hex washer head bolt
- Stud to bar connector

■ Copper Alloy Stud Bar Connector



- Cast of high-strength copper alloy
- Furnished with silicon bronze hex washer head bolt
- Stud to bar connector

■ Earthing & Grounding Systems

■ Re-Useable Welding Cable Lugs

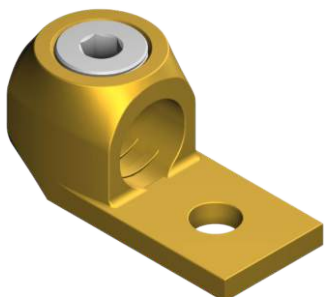


- Cast of high-strength copper alloy
- 2 or 4 Bronze Bolt
- All sizes furnished with reversible cable caps.

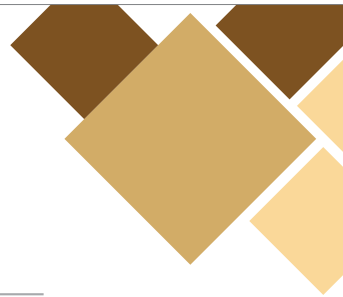


CABLE SIZE mm ²	CABLE SIZE DIA. mm	TYPE	BOLT SIZE
16	5.1	2 Bolt	M-5
25	6.3	2 Bolt	M-5
35	7.5	2 Bolt	M-5
50	9.5	4 Bolt	M-6
75	11	4 Bolt	M-6
100	13	4 Bolt	M-6
120	14	4 Bolt	M-6
170	16	4 Bolt	M-8
200	17	4 Bolt	M-8
250	18	4 Bolt	M-8
300	21	4 Bolt	M-10

■ Copper Cable Lug



- Compact, economical, high copper alloy terminal for joining a wide range of cable to equipment pads or terminal blocks.



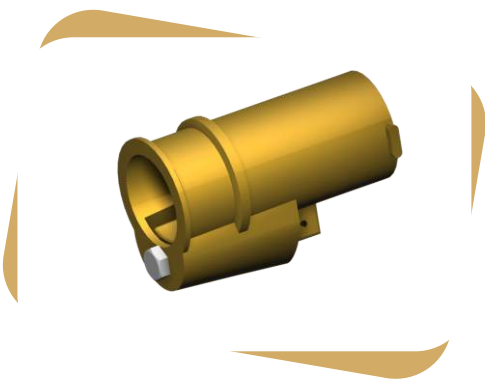
■ Earthing & Grounding Systems

■ Copper Alloy Stud Connector



- Cast of high-strength copper alloy
- Furnished with silicon bronze hex washer head bolt
- Substation Connector
- Stud to Bar Connector

■ Electric Pole Line Hardware

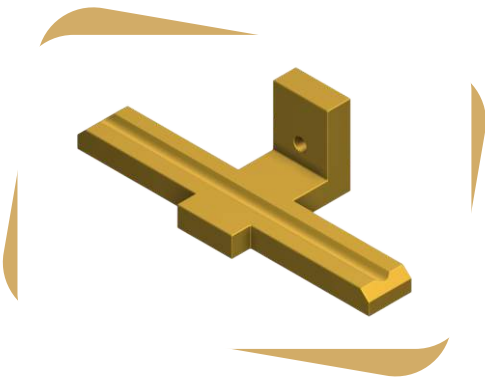


- Cast of high-strength copper alloy



■ Earthing & Grounding Systems

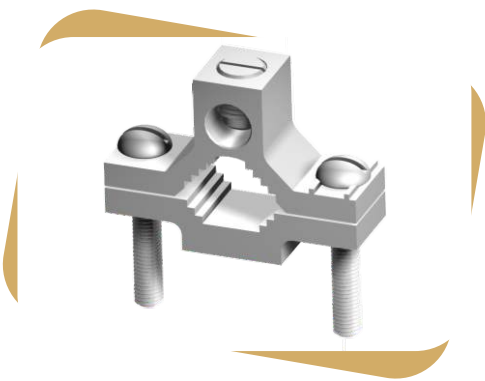
■ Rod Bracket



- Cast of high-strength copper alloy

■ Earthing & Grounding Systems

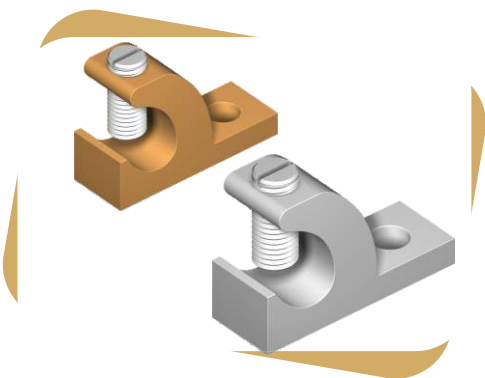
■ Grounding Clamps



- Extrusion Aluminum alloy

WATER PIPE SIZE	CONDUCTOR RANGE
½ to 1"	2 str.
1¼ to 2"	2 str.
2½ to 4"	2 str.
4¼ to 6"	2 str.

■ Lay - In Lug Connector

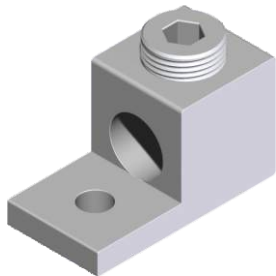


- Extrusion Aluminum & Copper alloy

CONDUCTOR RANGE
4 - 14 AWG

■ Earthing & Grounding Systems

■ Mechanical Connector

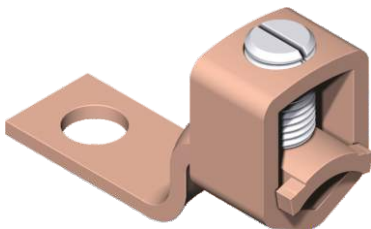


- Extrusion Aluminum alloy
- Available in Two, Three & Four-Hole Mount

CONDUCTOR RANGE
6 str
2 str
1/0 str
2/0 str

*Also available in various size

■ Copper Mechanical Lug





- Cast of high-strength copper alloy


CONDUCTOR SIZE AWG	CONDUCTOR SIZE
14 - 10	25 mm ²
14 - 6	35 mm ²
14 - 4	70 mm ²
2 - 1/0	125 mm ²
4 - 3/0	175 mm ²
2 - 4/0	225 mm ²
1/0 - 350	300 mm ²
1/0 - 500	400 mm ²
600 - 1000	650 mm ²

Dhyey

INDUSTRIES

 Gokulnagar Main Road, Tirupati Industrial Area,
Opp. Fortune Hotel, 150 Feet Ring Road,
Rajkot - 360 004 (GUJARAT) INDIA.

 info@dhyeyindustries.com | dhyeyindustries@gmail.com

 www.dhyeyindustries.com