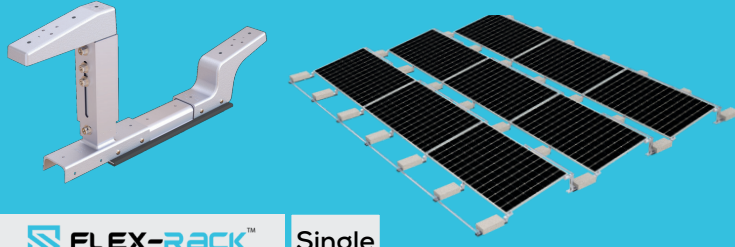






# SOLAR RACKING - FOR FLAT ROOF

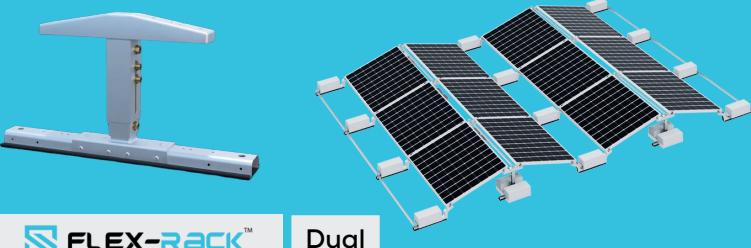
We offer Solar Racking systems and services Empowering your future with solar energy. We provide installer friendly racking system. Our Product portfolio has many varieties of Racking system with a cost-effective/quality ratio for you.

We provide various types of Flat roof solar module mounting structures







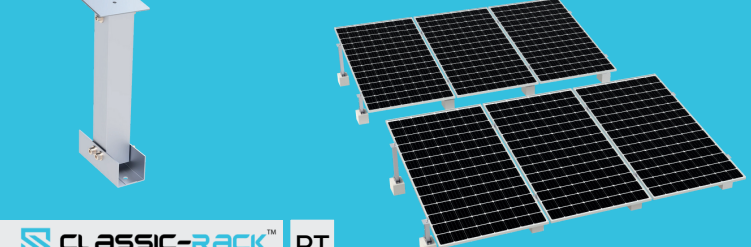
**FLEX-RACK**<sup>TM</sup> Single

-  SINGLE SOUTH ORIENTATION
-  NON-PENETRATIVE BALLAST - RACKING SYSTEMS
-  ADJUSTABLE AND PRE-ASSEMBLED
-  MADE UP OF HIGH-GRADE ALUMINIUM MATERIAL







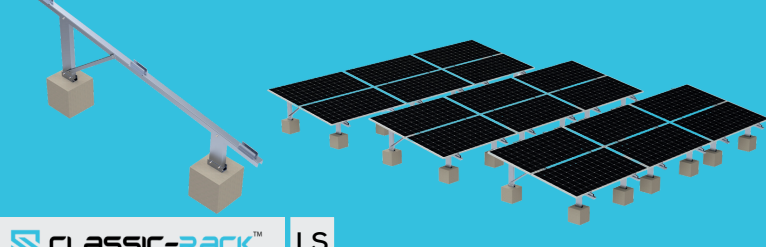
**FLEX-RACK**<sup>TM</sup> Dual

-  DUAL EAST-WEST ORIENTATION
-  AVAILABLE IN 10 DEGREE TILT ANGLES
-  NON-PENETRATIVE BALLAST RACKING
-  MADE UP OF HIGH-GRADE ALUMINIUM MATERIAL







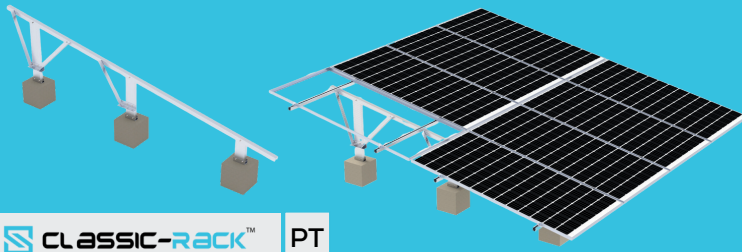
**CLASSIC-RACK**<sup>TM</sup> PT

-  COMPATIBLE WITH PORTRAIT AND LANDSCAPE ORIENTATION
-  PENETRATIVE BALLAST RACKING SYSTEM
-  AVAILABLE IN 5, 10, AND 15 DEGREE TILT ANGLES
-  MINIMUM NUMBER OF SKU'S



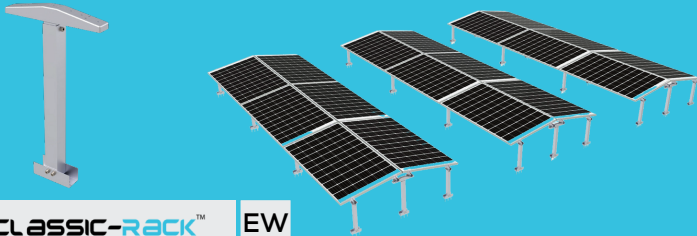
**CLASSIC-RACK**<sup>TM</sup> LS

-  CLASSIC RACK - DUPLET LANDSCAPE
-  COMPATIBLE WITH LANDSCAPE ORIENTATION
-  PENETRATIVE BALLAST RACKING SYSTEM
-  AVAILABLE IN 10 DEGREE TILT ANGLES



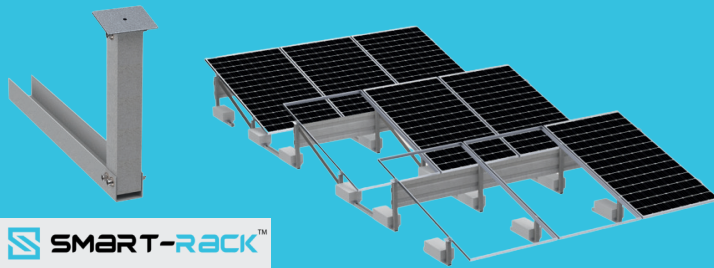
**CLASSIC-RACK™** PT

- ☑ CLASSIC RACK - DUPLET PORTRAIT
- ☑ COMPATIBLE WITH PORTRAIT ORIENTATION
- ☑ PENETRATIVE BALLAST RACKING SYSTEM
- ☑ AVAILABLE IN 10 DEGREE TILT ANGLE



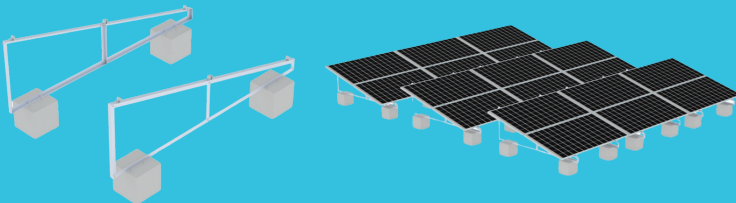
**CLASSIC-RACK™** EW

- ☑ DUAL ORIENTATIONS EAST-WEST SETUP
- ☑ PENETRATIVE BALLAST RACKING SYSTEM
- ☑ AVAILABLE IN 10 DEGREE TILT ANGLES
- ☑ EASY TO INSTALL



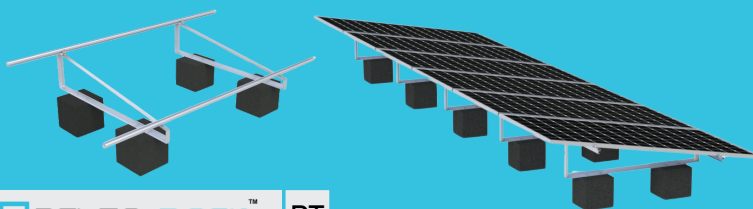
**SMART-RACK™**

- ☑ SMART RACK WITH REAR WIND DEFLECTOR
- ☑ SMART AND STRONG DESIGN
- ☑ STANDARD TOOL APPROACH
- ☑ 10-YEAR WARRANTY



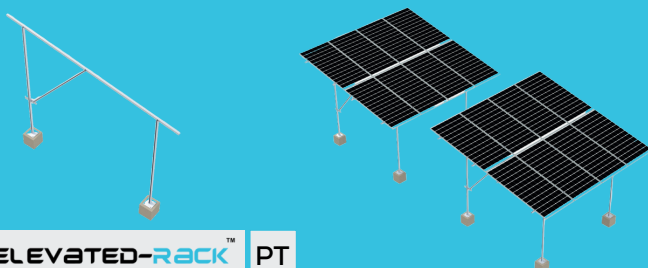
**DELTA-RACK™** LS

- ☑ COMPATIBLE WITH LANDSCAPE ORIENTATION
- ☑ PENETRATIVE BALLAST RACKING SYSTEM
- ☑ AVAILABLE IN 10, 15, 20 & 25 DEGREE TILT ANGLE
- ☑ RIGID AND STABLE DESIGN



**DELTA-RACK™** PT

- ☑ COMPATIBLE WITH PORTRAIT ORIENTATION
- ☑ PENETRATIVE BALLAST RACKING SYSTEM
- ☑ AVAILABLE IN 10, 15, 20 & 25 DEGREE TILT ANGLE
- ☑ RIGID AND STABLE DESIGN



**ELEVATED-RACK™** PT

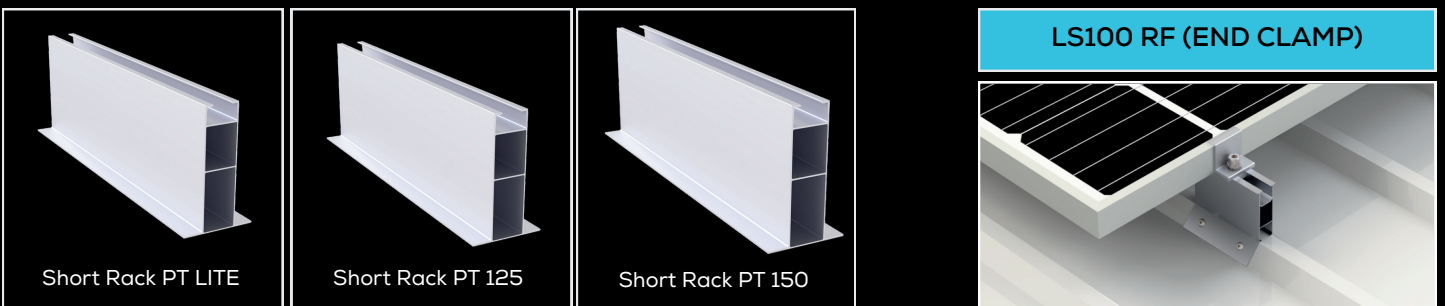
- ☑ COMPATIBLE WITH LANDSCAPE & PORTRAIT ORIENTATION
- ☑ PENETRATIVE BALLAST RACKING SYSTEM
- ☑ AVAILABLE IN MULTIPLE TILT ANGLES
- ☑ AVAILABLE IN CUSTOMISED SETUPS OF 2,3 & 5 PANELS SETUPS



# SOLAR RACKING - FOR METAL ROOF

Our Racking systems having a minimal number of SKUs can definitely make the installation process more efficient and less time-consuming, which can be a huge benefit for both the installers and the end users. We are providing solar racking solutions for trapezoidal metal roofs, corrugated metal roofs, and seam roofs.

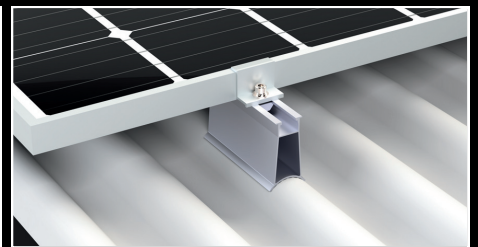
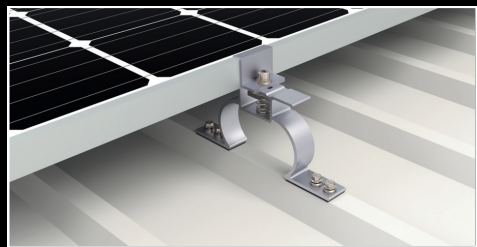
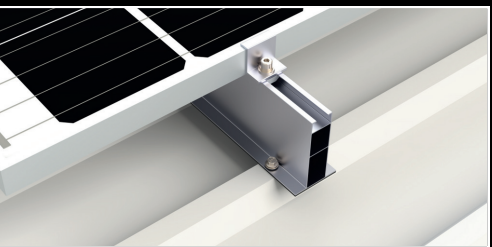
## SHORT-RACK™ FOR METAL ROOF







### PORTRAIT - TRAPEZOIDAL ROOF

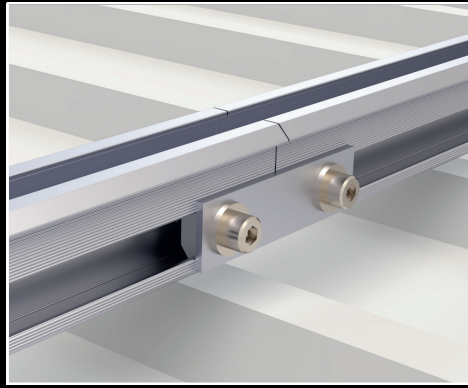
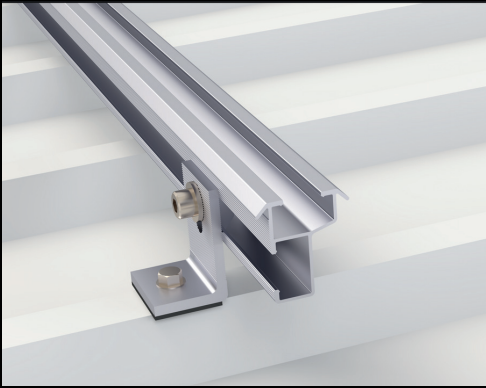
### LAND SCAPE- TRAPEZOIDAL ROOF

### CORRUGATED METAL ROOF



-  PENETRATIVE AND NON-PENETRATIVE SOLUTION
-  EASY AND QUICK INSTALLATION
-  MINIMUM NUMBER OF SKU'S

-  UNIQUE DESIGN
-  COST EFFECTIVE
-  25 YEARS OF WARRANTY



L Angle



55mm

L Angle










75mm

L Angle



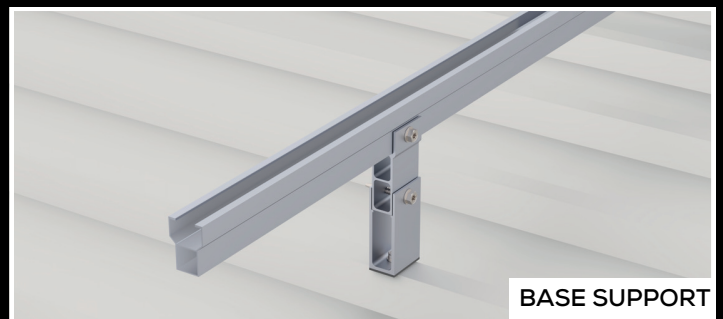
100mm

-  EASY ADAPTABILITY WITH MULTIPLE ROOFS
-  BETTER AIR CIRCULATION IN TROPICAL REGIONS.
-  COMPATIBLE WITH UNIVERSAL CLAMPS
-  PANEL-TO-ROOF CLEARANCE UP TO 120MM

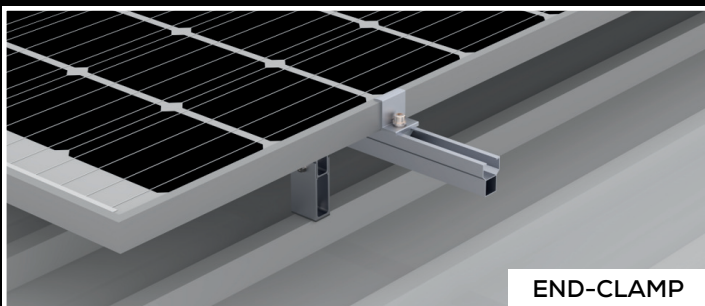
-  EASY AND QUICK INSTALLATION
-  WIND SPEED UP TO 200 KMPH
-  WEATHER/CORROSION RESISTANCE
-  L-ANGLES -55MM, 75MM & 100MM



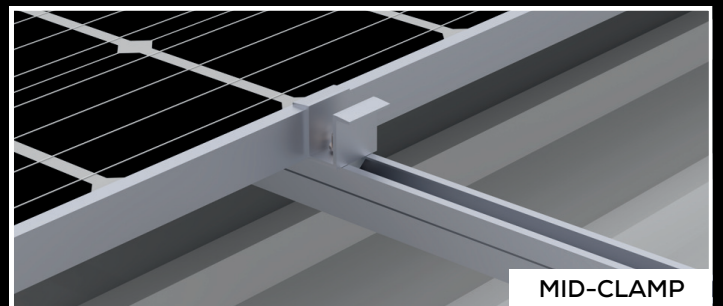
CONNECTOR







BASE SUPPORT







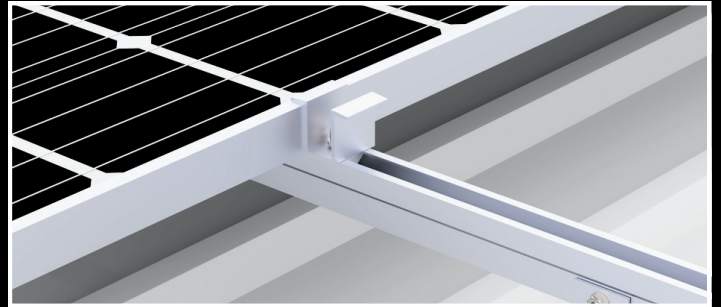
END-CLAMP







MID-CLAMP

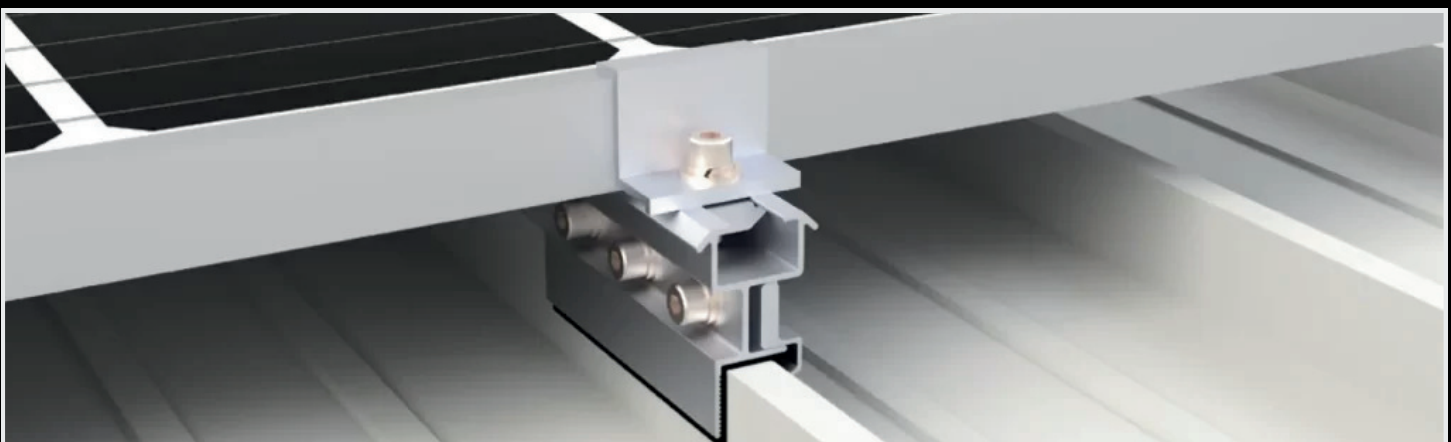
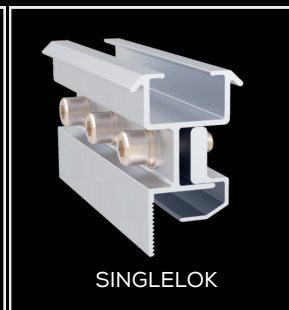
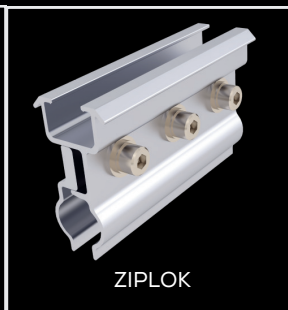
-  DESIGN AS PER IS STANDARD
-  LIGHT & UNIQUE DESIGN
-  STANDARD TOOL APPROACH
-  HEIGHT 150MM




-  GOOD STRENGTH-TO-WEIGHT RATIO
-  EASY AND QUICK INSTALLATION
-  COMPATIBLE WITH MULTIPLE ROOFS\*
-  25-YEAR WARRANTY






-  DESIGN AS PER IS STANDARD
-  LIGHT & UNIQUE DESIGN
-  STANDARD TOOL APPROACH
-  HEIGHT 100MM\*

-  GOOD STRENGTH-TO-WEIGHT RATIO
-  EASY AND QUICK INSTALLATION
-  COMPATIBLE WITH MULTIPLE ROOFS\*
-  25-YEAR WARRANTY



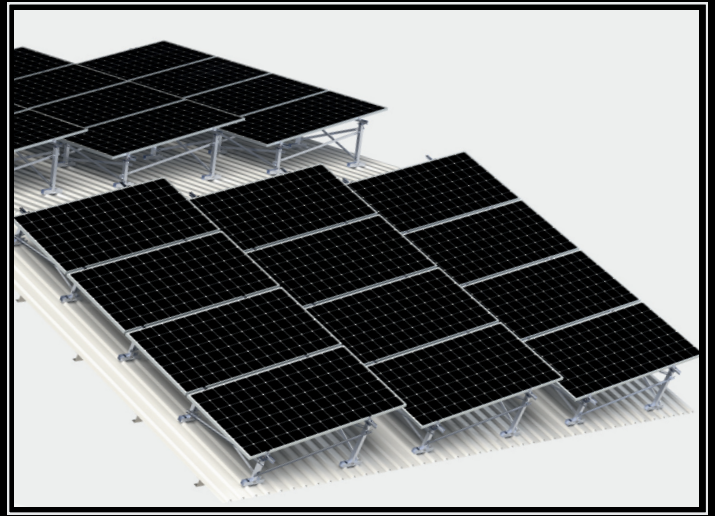
-  WIND SPEED UPTO 200 KMPH
-  STRONG AND UNIQUE DESIGNS
-  COMPATIBLE WITH UNIVERSAL CLAMPS

-  GOOD STABILITY, ALIGNMENT AND FIRMNESS
-  STANDARD TOOL APPROACH
-  25 YEARS OF WARRANTY

## COUNTER-RACK™

EAST-WEST

FOR SLOPED ROOF

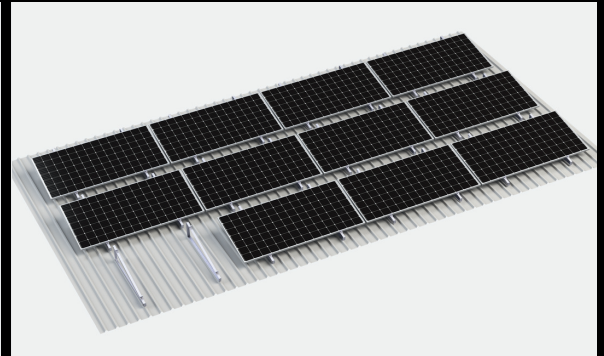
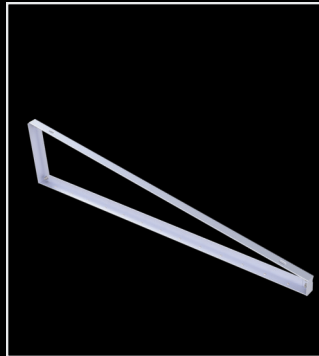


- ☑ LIGHTWEIGHT AND DURABLE
- ☑ COMPATIBLE WITH WIDE RANGE OF SOLAR PANEL
- ☑ PORTRAIT & LANDSCAPE ORIENTATION
- ☑ MAXIMIZES SUN EXPOSURE FOR BEST EFFICIENCY
- ☑ EASY TO INSTALL
- ☑ 25 YEARS OF WARRANTY

## DELTA-RACK™

FOR SLOPED ROOF

- ☑ LANDSCAPE ORIENTATIONS
- ☑ COUNTER- NS & EW ADV TILT
- ☑ MAX ROOF TILT-10°, 20°, 30°
- ☑ QUICK INSTALLATION
- ☑ PENETRATIVE SOLUTION
- ☑ RIGID, STABLE, LIGHT WEIGHT



## X-TEND-RACK™

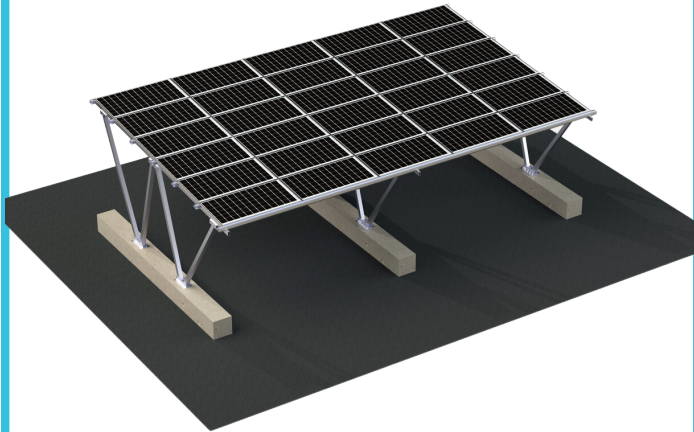
FOR SLOPED ROOF

- ☑ LS & PT ORIENTATIONS
- ☑ INCREASES SYSTEM EFFICIENCY
- ☑ TILT ANGLE -5°, 10°, 15°
- ☑ SMART AND STRONG DESIGN
- ☑ FOR THE SOUTHWARD ROOFS
- ☑ PENETRATIVE SOLUTION

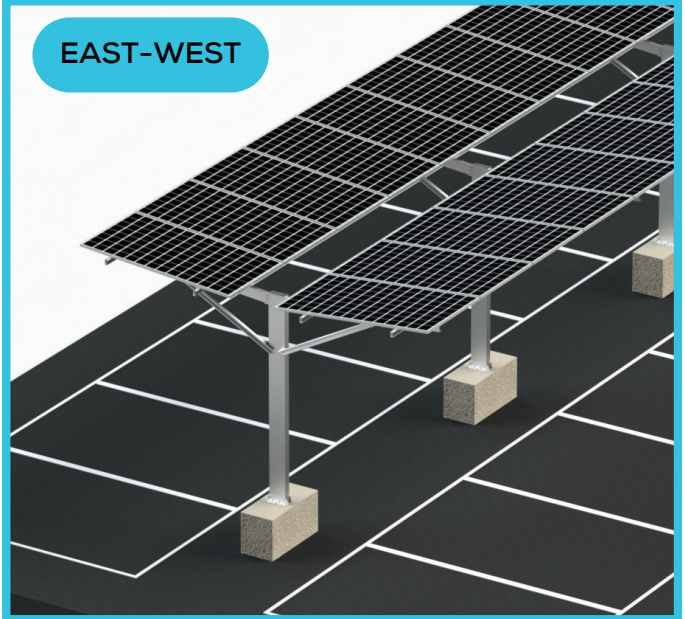


# CARPORT-RACK

Aluminum "W" Waterproof







EAST-WEST






Carport -variant

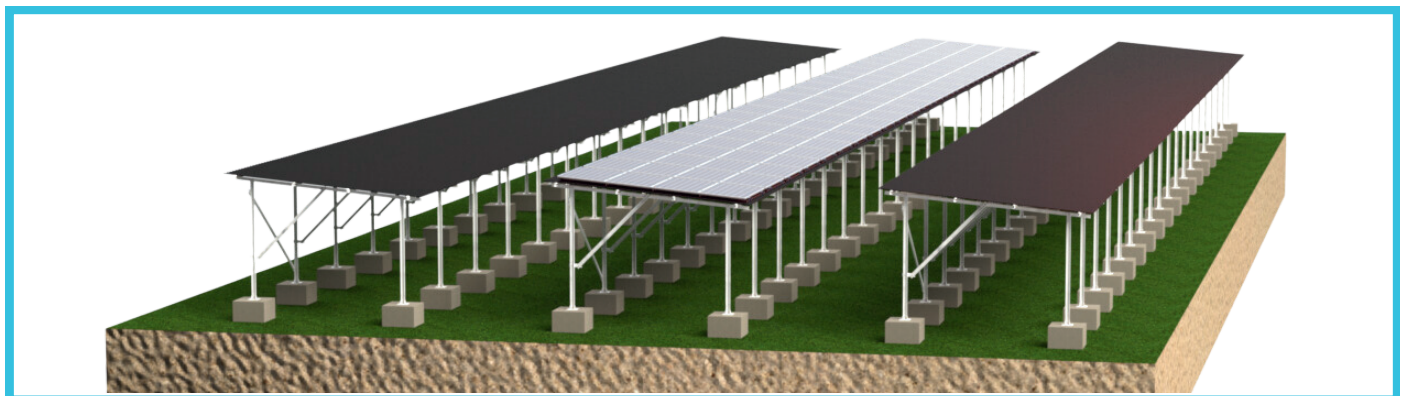
MS-(Tailor Made)  
MS-W




Aluminum "W" Waterproof  
MS-1P Dual




-  AVAILABLE IN STEEL & ALUMINIUM (PT & LS)
-  STRONG , RIGID & EASY TO INSTALL SYSTEM
-  CUSTOMIZATION AS PER SITE AVAILABLE
-  WATERRESISTANT SOLUTION IN LANDSCAPE VARIANTS

-  AVAILABLE IN 5 & 10 DEG.
-  STANDARD STRUCTURE
-  COMPATIBLE WITH SUVS

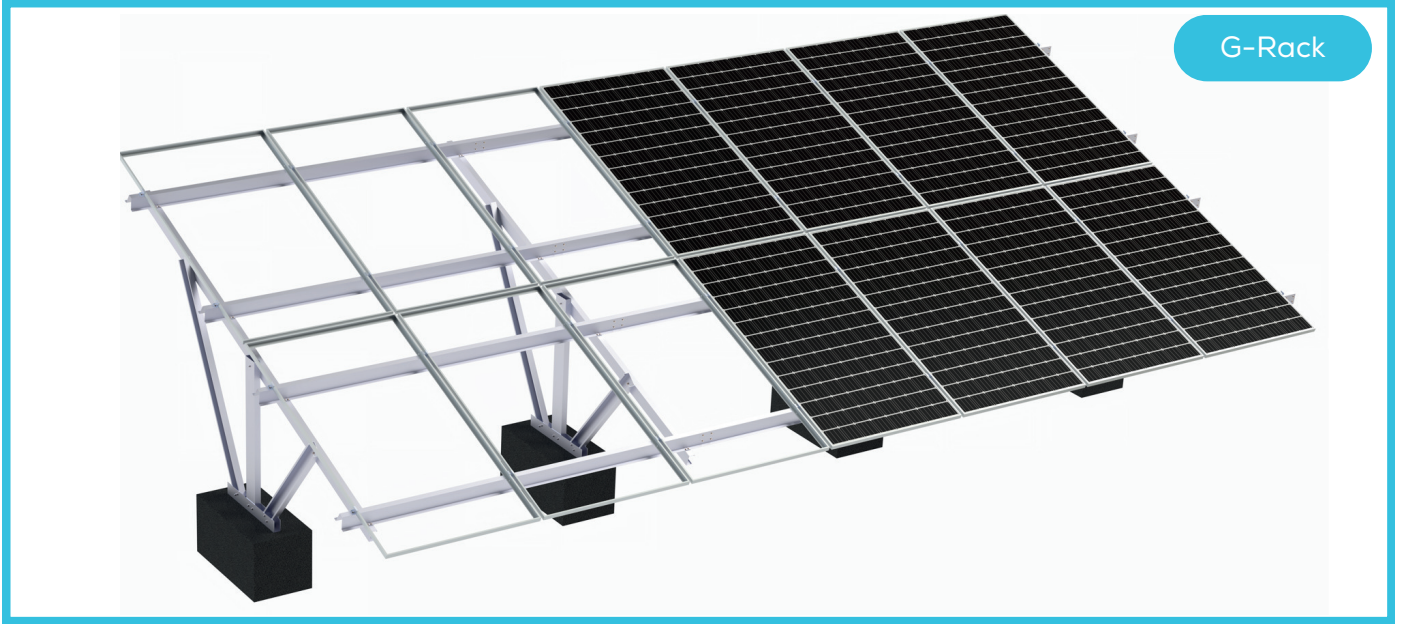
# GREEN-RACK



-  AVAILABLE IN 5 & 10 DEG.
-  STRONG , RIGID & EASY TO INSTALL
-  COMPATIBLE TO GARDENING TRACTOR

-  CUSTOMIZATION AS PER SITE AVAILABLE
-  OPTIONAL GREENHOUSE SHADES AVAILABLE
-  COMPATIBLE ENOUGH TO GROW LOW SHADE CROPS LIKE BERRIES, BUSHES ETC.







# GROUND-RACK



Ground Rack -variant

1P  
2P

2P with Ground Screw  
2p - Bifacial

-  AVAILABLE IN 10,15,20 DEGREE
-  MADE UP WITH STEEL ONLY
-  AVAILABLE IN UNI LEG & MULTI LEG FORMAT
-  VARIANTS FOR BI-FACIAL PANELS
-  SIMPLE AND STANDARD TOOL APPROACH
-  CUSTOMIZATION POSSIBLE

# GROUNDING-SCREW



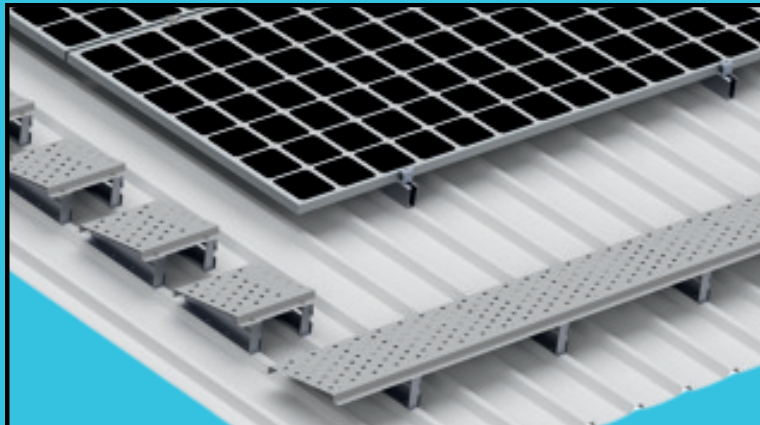
-  QUALITY FOUNDATION
-  USE FOR MULTIPLE APPLICATIONS
-  IMMEDIATE LOAD CARRYING CAPABILITY
-  15-YEAR WARRANTY









# WALK-RACK

The SRPL Walkway system features an open grillage design, providing a secure, anti-slip walking surface that offers protection for standing seam, metal profile, and flat roofs. SRPL walkway system can be adjusted to be level or stepped, depending on the roof's slope. For added safety, handrails can be installed on one or both sides.

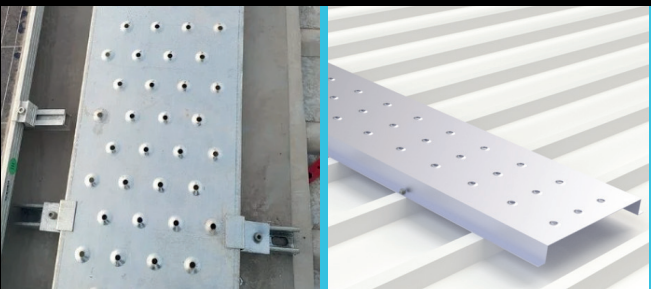


## ALUMINIUM - WALKRACK



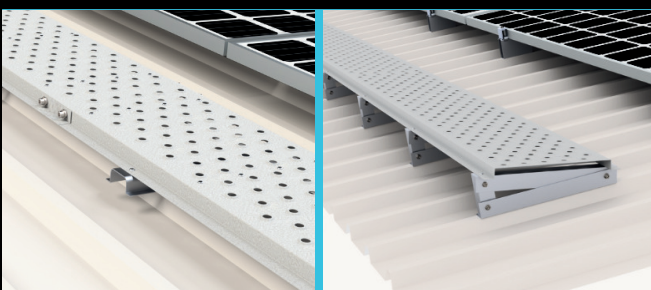
-  SUITABLE TO ALL TYPES OF ROOFS
-  ROOF ANGLES UP TO 30 DEGREES
-  LONG LASTING AND MAINTENANCE FREE
-  25-YEAR WARRANTY

## GALVANIZED IRON (GI) - WALKRACK



-  FASTER INSTALLATION
-  LIGHT WEIGHT AND HIGH STRENGTH
-  MULTIPLE FASTENING OPTIONS
-  10-YEAR WARRANTY





## GALVALUME - WALKRACK



-  QUICK INSTALLATION
-  MULTIPLE FASTENING OPTIONS
-  TESTED SAFE & CERTIFIED SYSTEM
-  10-YEAR WARRANTY

## FRP - WALKRACK



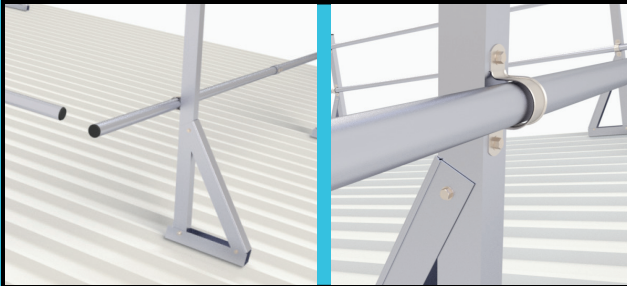
-  UV RESISTANT
-  WEATHER & CORROSION RESISTANT
-  LIGHT WEIGHT, HIGH STRENGTH & ANTI SKID
-  10-YEAR WARRANTY







A Safety Handrail for solar installations is a protective barrier designed to enhance worker safety during the installation and maintenance of solar panels, particularly on rooftops or elevated platforms. It helps prevent falls and provides support while ensuring compliance with safety regulations.





## ALUMINIUM - HAND RAIL



-  MADE FROM HIGH-STRENGTH ALUMINIUM
-  PROVIDES ENHANCED SAFETY MEASURES
-  PENETRATIVE SOLUTION
-  25-YEAR WARRANTY



## GP - HAND RAIL



-  ENHANCED SAFETY MEASURES
-  PENETRATIVE SOLUTION
-  STANDARD TOOL APPROACH
-  10-YEAR WARRANTY

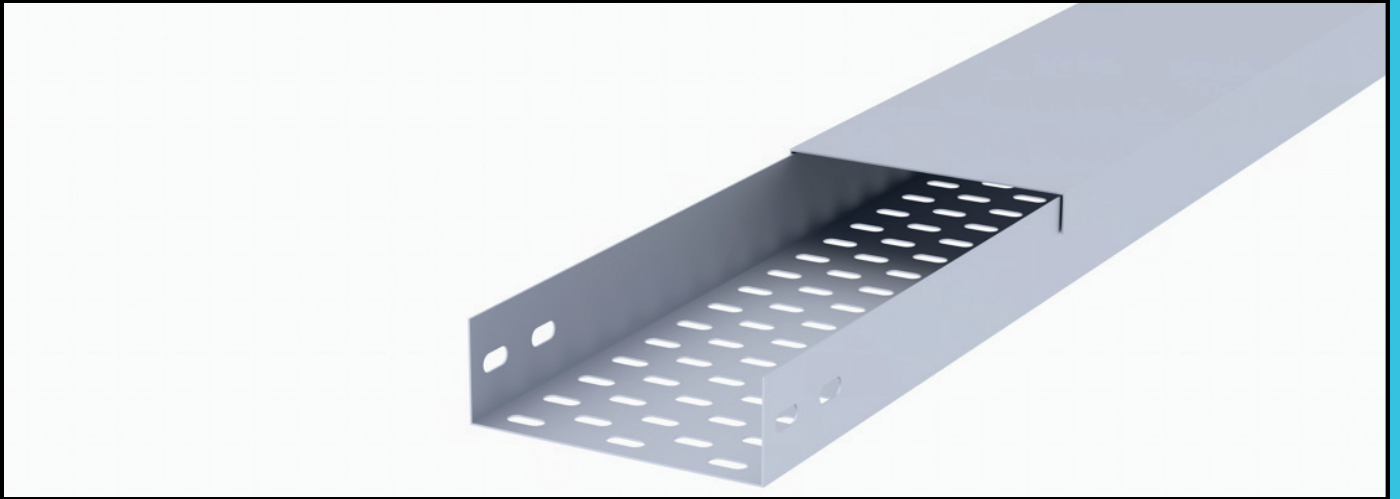
## FRP - HAND RAIL



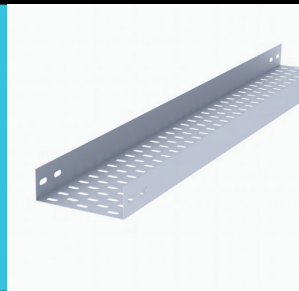
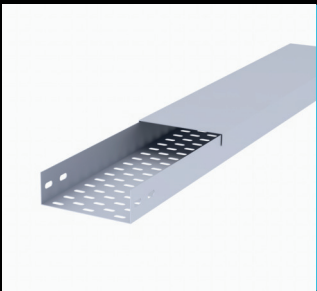
-  FLEXIBLE & IMPACT RESISTANT
-  LIGHTWEIGHT & EASY TO HANDLE
-  RESISTANT TO CORROSION
-  10-YEAR WARRANTY



# CABLE-RACK

A Solar Cable Tray is a system used to support and organize electrical cables in solar panel installations. It provides a safe and efficient way to route cables from solar panels to inverters and other components, protecting them from physical damage and ensuring proper airflow for heat dissipation.



## ALUMINIUM - CABLE RACK



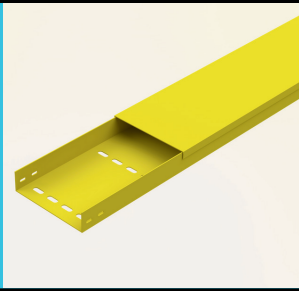
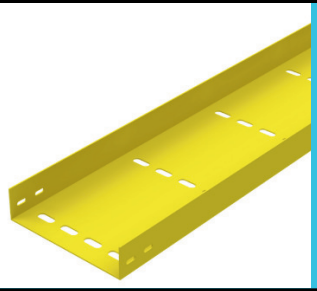
-  WEATHER AND CORROSION RESISTANT
-  LIGHT WEIGHT AND HIGH STRENGTH
-  PENETRATIVE SOLUTION
-  10-YEAR WARRANTY





## GALVANIZED IRON (GI) - CABLE RACK



-  QUICK INSTALLATION
-  PENETRATIVE SOLUTION
-  STANDARD TOOL APPROACH
-  5-YEAR WARRANTY

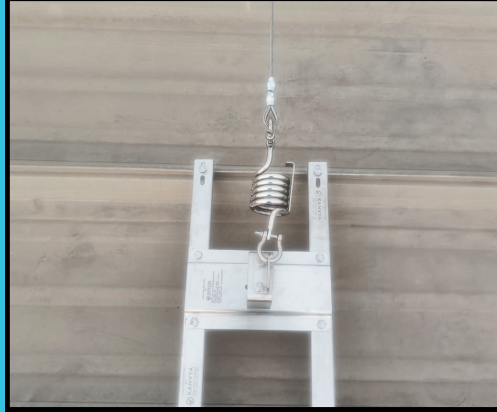
## FRP - CABLE RACK



-  UV RESISTANT WEATHER
-  CORROSION RESISTANT
-  LONGER SERVICE LIFE AND MAINTENANCE
-  5-YEAR WARRANTY







Safety line systems, also known as mansafe systems, lifeline systems, lanyards, harness lines, fall arrest systems, or fall restraint systems, provide a crucial lifeline for individuals who work in elevated environments. These systems come in both horizontal and vertical configurations, offering reliable protection against falls.

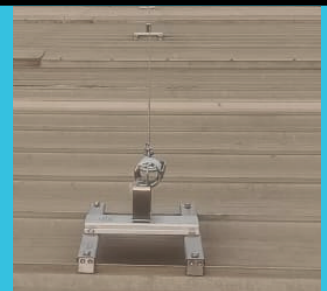


### STAINLESS STEEL (SS) - SAFETY RACK

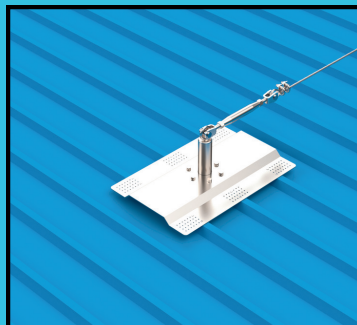


-  LOAD CAPACITY 200KG
-  CORROSION RESISTANCE
-  PENETRATIVE SOLUTION
-  10-YEAR WARRANTY

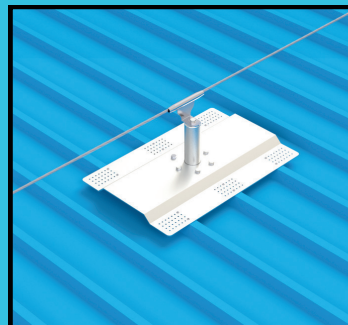
### GALVANIZED IRON (GI) - SAFETY RACK



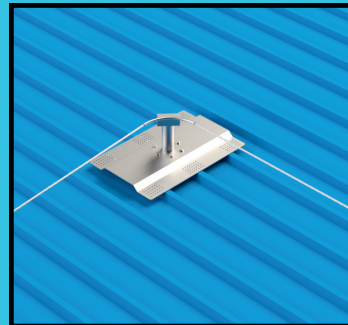
-  EFFICIENT INSTALLATION
-  STANDARD TOOL APPROACH
-  PREVENTS FALLS DURING INSTALLATION
-  5-YEAR WARRANTY



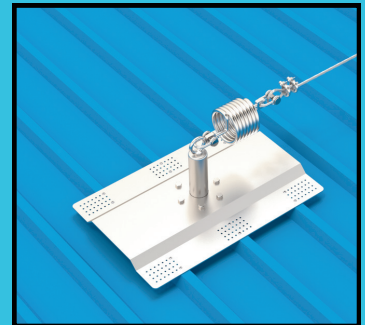
END POST WITH SHOCK ABSORBER



INTERMEDIATE POST



CORNER POST



END POST WITH SPRING