



IGNITE POLYMERS INDUSTRIES

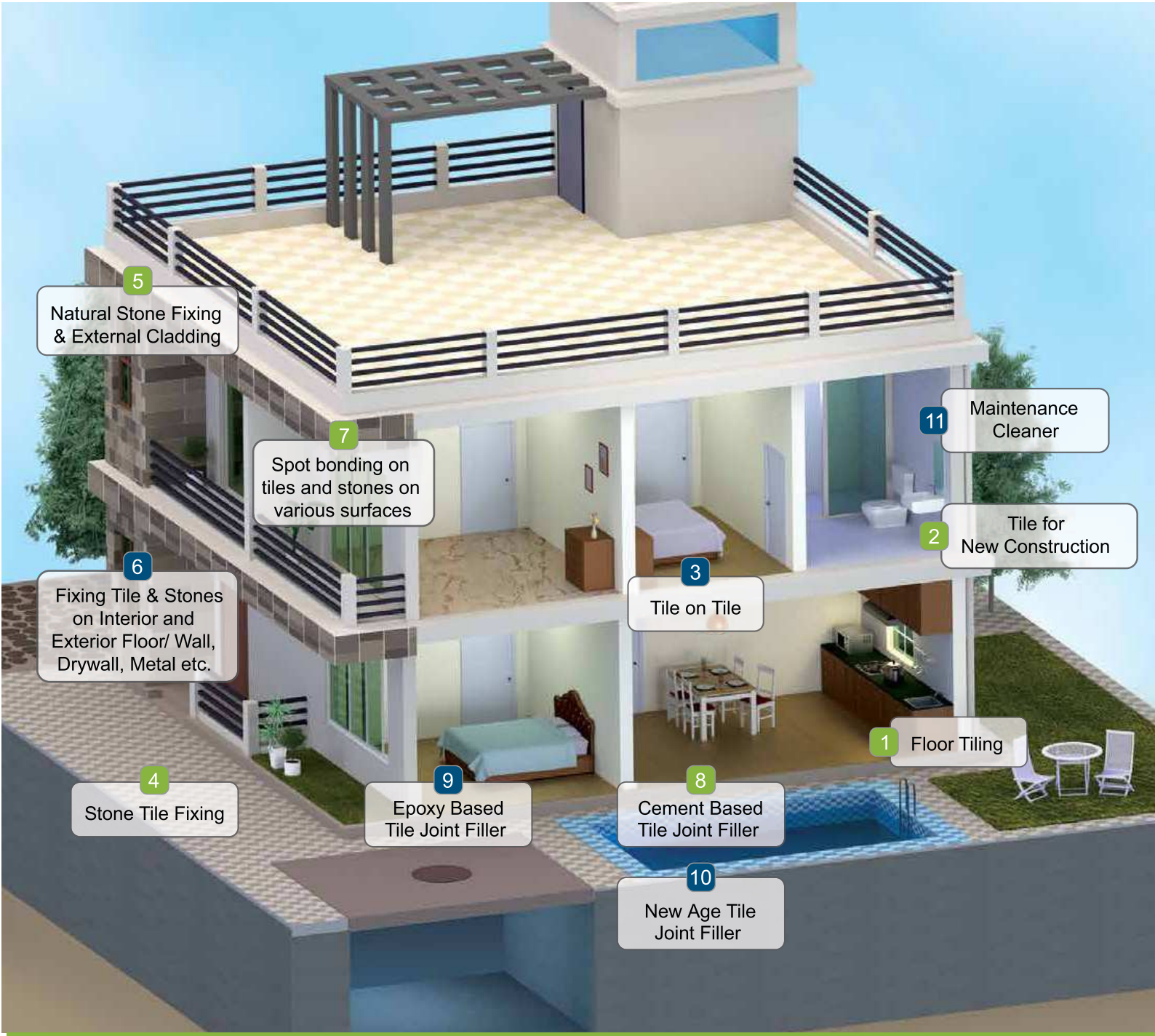
Building Future Together





IGNITE POLYMERS INDUSTRIES

Building Future Together



Ignite is a Global Brand That Manufactures Adhesives, sealants, repairs, Waterproofing, maintenance & Building Products. range Based On International Standards To Facilitate Global Construction Chemical And Building Materials Market. The Brains Behind The Product Development Have A Combined Experience Of More Than 120 Years In The Same Industry. with This Abundance Of Experience The Company Is Ready To Build Better!

PRODUCTION

We have modernized full automatic dry motor plant with annual production capacity of 32000 mt. ton with our 3 manufacturing units situated in **Karnal, Gurugram and Rudrapur** which insures optimum quality & best performance of our specially formulated products our epoxied plant, can delivered upto 1000 ton of epoxy grout annually.

GLOBAL PRESENTATION

We are looking for export in SAARC Countries as per our commitment for Global Presentation. In that process we are met certificate of European Standard **CE** for the quality of our products.



RESEARCH & DEVELOPMENT

We Have Invested Heavily In Research And Development To Create The Best Quality And A Certified Products Range. With Decades Of Experience Industry Knowledge And Materials Research, We Have Research, We Have Created A State-of-the-art Lab With Modern Equipment.



OUR PRODUCT CATERGORIES

We Develop Innovative Solutions For all type of construction segments & Sub Industries, using a combination of chemicals natural and renewable raw materials along with our deep knowledge & expertise in specialized building chemicals which are summarized in the following Industries

- Tiles Industry
- Paint Industry
- Cement Industry
- Industrial Products
- AAC Block Industry
- Marble Industry
- Water Proofing



SERVICES

We have fleet of 3 commercial vehicles and a large modernized Logistic system to ensure delivery on time.

Our after Sale service is our unique feature which improve customer retention and increase the likelihood of customer parching from us again or referrals business.

IGNITE PREMIUM 1101



Polymer Fiber Modified Grey Cement Based Adhesive With No Vertical Slip ,suitable For Fixing ceramic And Gres Tiles For Floors And Walls In Internal Applications.

CHARACTERISTICS

- For Ceramic And Gres Tiles
- No Vertical Slip
- Application Upto 10 Mm
- Prolonged Workability
- Adjustable
- Excellent Workability
- For Larger Vitrified tiles upto (2x4)sq.ft. on floor.



SCOPE OF USE

- Ignite Polymers is a Tiles Adhesive Designed For Gres Tiles And Ceramic Tiles (glazes, terracotta)
- for Vitrified Tiles Size Up To 4 Sq.ft on floors.
- indoor Use
- on Horizontal And Vertical Surfaces
- on Cement And Cement-lime Plaster, cement Screeds, Cement Ground Coats And Concrete



COLOR	: GREY
ACHIEVED THICKNESS	: Up To 10 mm
COVERAGE	: As A Guide: 1.2kg/m/mm Of The Thickness (consumption May Very Depending On Evenness On The Substrate, trowel Notch Size, type Of Tiles And The Application Technique)
COMPLIANCE/STANDARD	: C1 T As Per EN 12004 /iso 1007 Standard Type 1 T As Per IS 15477-2019 Standard
PACKAGING	: 20kg bag 40kg bag (for project sale only)
SHELF LIFE	: Until 12 Months Since The Date Of The Production When Stored In Un Damaged Dry Conditions And Original Packaging.

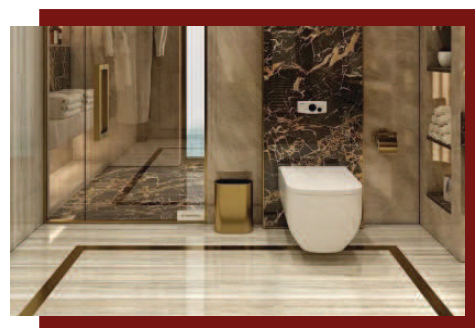
GOLD 2202



Universal Fiber and Polymer Modified, thin Bed and Middle Bed Adhesive For Application of Ceramic Tiles, Vitrified Tiles and Natural Stone on Wall & Floor in Internal & External Application.

CHARACTERISTICS

- For Ceramic,vitrified (Semi And Fully) Tiles,glass Mosaic And Natural Stone (non-sensitive)
- On Balconies,terraces,wet Rooms And Bathrooms
- On Water Proof And Moisture Proof Layers
- For Inside And Outside Use
- Adlonger Open Time For Safer Application
- For Tile On Tile Application



SCOPE OF USE

- Ignite Polymer Adhesive Mortar For Laying Ceramic Tile,vitrified (semi And Fully) Tiles And Natural Stone (nonsensitive & Color Fast).
- Indoors And Outdoors.
- Ignite Polymer Mortars Can Be Used In Rooms Exposed To Water.
- It Is Recomendted For Floors With Elevated Functional Loads, In Shopping Malls,staircase



COLOR	:Grey & White
ACHIEVED THICKNESS	:Up To 10 mm to 12mm
COVERAGE	:As A Guide:1.2kg/m ² /mm Of The Thickness (Consumption May Very Depending On The Evenness On The Substrate,trowel Notch Size,type Of Tiles And The Application Technique)
COMPLIANCE/ STANDARD	:C2 TE As Per EN 12004 / Iso 13007 Type 2 T As Per Is 15477-2019 Standard
PACKAGING	:40kg Bag (for Project Sale Only) :20kg Bag Only
SHELF LIFE	:Until 12 Months Since The Date Of Production When Stored In Undamaged Dry Conditions And Original Packaging.

PLATINUM S1 3303

DEFORMABLE TILE & STONE ADHESIVE



Deformable Cementitious Mineral, Polymer Fiber Modified Adhesive with Improved Characteristics, Slip Resistance and Extended Open Time, High Performance Adhesive for Installing Vitrified Tiles, large Scale, Thin Tiles and Slabs as well as Natural Stones

CHARACTERISTICS

- With Visible Fibers For Strength And Flexibility Balancing Substrate Deformations On Critical Surfaces Like Balconies,terraces,wet Rooms,bathrooms,swimming Pool And External Facade Etc.
- For Ceramic, vitrified Tiles(semi And Fully),glass Mosaic And Natural Stone(non-sensitive)
- Suitable For Large Scale And Heavy Duty Vitrified Tiles



SCOPE OF USE

- Ignite Platinum S1 is Used To Laying Vitrified Tiles (semi And Fully),Cement And Stone Tiles,large Format And Heavy Duty Tiles,Glass Mosaics And Natural Stone on Deformable Substrate.
- Its Features Keep Elastic Connection With Substrate Which Allowed To Carry Over Shear Stresses Between Tile And Substrate.
- On Horizontal And Vertical Surface.



COLOR	:Grey & White
ACHIEVED THICKNESS	:Up To 15 mm
COVERAGE	:As A Guide:1.2kg/m ² /mm Of The Thickness (Consumption May Very Depending On The Evenness On The Substrate,trowel Notch Size,type Of Tiles And The Application Technique)
COMPLIANCE/ STANDARD	C2 TE S1 As Per EN 12004 / Iso 13007 Standard Type3 T S1 as Per Is 15477-2019 Standard
PACKAGING	:20kg Bag, 40kg bag(For Project Sale Only)
SHELF LIFE	:Until 12 Months Since The Date Of Production When Stored In Undamaged Dry Conditions And Original Packaging.

DIAMOND S2 4404

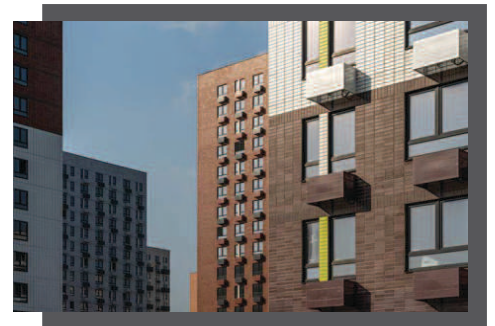


HIGHLY DEFORMABLE TILE & STONE ADHESIVE

Highly Flexible, Polymer, Mineral Fiber Modified Special Adhesive Mortar for Installing Vitrified and Natural Stones, Slabs with High Safety Reserves.

CHARACTERISTICS

- For Use On Difficult Substrates
- For Tile And Stones Of Size Morethan 1200 1200mm
- For indoor and outdoor use
- Application up to 15mm



SCOPE OF USE

- For The Highly Load Bearing, cavity-free Installation Of
- Vitrified Tiles And Slabs As Well As Porcelain Stoneware And Cotto
- Cast Concerete Slabs
- Natural Stones With A Low Tendency To Discolor
- Synthetic Resin Bonded Slabs (agglomerate Slabs).
- Glass Tiles, glass Mosaics And Mosaics And Thin Tiles.
- Ignite Diamond S2 4404 Is Suitable For Indoors And Outdoor Use



COLOR	: Grey & White
ACHIEVED THICKNESS	: Up To 15 mm
COVERAGE	: As A Guide: 1.2kg/m ² /mm Of The Thickness (Consumption May Very Depending On The Evenness On The Substrate, trowel Notch Size, type Of Tiles And The Application Technique)
compliance/standard	: C2 TE S2 As Per EN 12004 / Iso 13007 Standard type 4T S2 as Per Is 15477-2019 Standard
packaging	: 20kg Bag
Shelf Life	: Until 12 Months Since The Date Of Production When Stored In Undamaged Dry Conditions And Original Packaging.

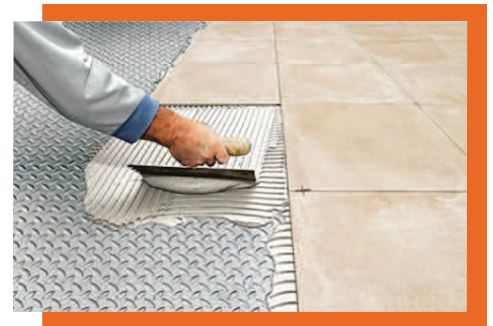
SUPERB FLAX 369



For The Installation Of Tiles, Natural Stones & Other Special Coverings - Specially On Difficult Substrates Such As Glass, Rubber, Wood, Metal Etc. It Is Pu Base High Performance And High Adhesion Fixing With No Vertical Slip On Deformable Surfaces.

CHARACTERISTICS

- Able To Absorb Stresses
- High Elasticity,
- Extremely Flexible
- For Areas Subject To Light Chemical Attack
- Resistant To Ageing,good Workability
- Highly Thixotropic



SCOPE OF USE

Superb Flax 369 is Used For Installing Vitrified Tiles And Slabs, Marble, Artificial Stones (agglomerated Stones), Natural Stone Slabs, Clinker, Porcelain, Glass Tiles And Glass Mosaic Etc. On Floors And Walls On Absorbent And Non-absorbent Surfaces.

Building Elements, Prefabricated Components, Profiles Made Of Wood, Glass, Rubber, Pvc And Metal. **Superb Flax 369** Is Suitable For Indoor And Outdoor Use.

It Ensures A Reliable And Firm Bond, Even On Difficult Substrates Like Metal, Wood, Rubber, Glass, Synthetic Resin And Coatings — Usually Without A Primer. Thanks To Its High Flexibility, It Can Also Be Used On Slightly Vibrating Surfaces.



	PART-A	PART- B
COLOR	White	pale brown
MIXING RATIO (BY WEIGHT)	90	10
PACKAGING	4.5kg	500kg
	5kg (A+B) Bucket	
MIXED COLOR	White	
MIXING CONSISTENCY	Viscous paste	
CONSUMPTION	1.5 Kg/m ² /mm Adhesive Thickness (coverage May Very Depending On Notch Trowel Size, Surface Smoothness And Absorption)	
SHELF LIFE	Until 12 Months In Original Packaging In Dry Place.	

EPOXY GROUT 909

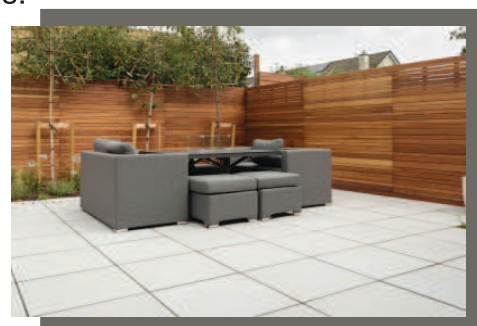


Three — Component Chemical-resistant Epoxy grout For Installation And Grouting Of Tiles, Mosaics And Stones, Where Hygiene Is Of Utmost Importance Such As Bathrooms, Kitchens, Living Room, Bedroom, Hospitals, Laboratories, Food & Beverages Industries, Dairy Industries, Swimming Pools, Showrooms, Airports And High Traffic Areas. It Is Chemical Resistant Joint Filler And Is Available In **72 Colors**.

CHARACTERISTICS

Optimized UV And Weather Resistant
Stable And Uniform Colors For All Types Of Tiles/stones
Easy Application And Cleaning As Cementitious Grout Mortar
High Mechanical Strength
Anti-bacterial & Anti-fungal
Ideal For Waterproof Grouting
Can Be Used As A Grout Mortar And Adhesive
Suitable For The Contact With Food

Excellent Chemical Resistance
Non Toxic
Strong, Durable
Vertical Resistance/Slip Resistance
Joint Width 1 To 12 mm



SCOPE OF USE

Suitable For Chemical-resistant Installation And Grouting Of Floor And Wall Tiles And Mosaic Interiors And Exteriors With Grout Joints Between 1 And 12 Mm Wide, Such As:

- Floor And Wall Tiles, Stones In General For Residential, Public And Industrial Areas
 - Floor And Wall Tiles, Stones In Bathrooms, Showers, Swimming Pool, Tanks, Thermal Or Brackish Water, Spas And Hammams
 - Under floor Heating, Kitchen Countertops, Terraces And Balconies.
 - Suited For Drinking Water And Food Processing Applications
- The product is Comply with RG & As per EN 12004 and EN 13888 or ISO 13007 Standards.



	PART-A	PART-B	PART - C
MIXING RATIO (BY WEIGHT)	70	20	10
PACKAGING	1 kg Combo Pack (A+B+C)		
	0.700kg	0.200kg	0.100kg
	5kg Combo Pack (A+B+C)		
	3.5kg	1.0kg	0.500kg
COLOR	72 Colors		
CONSUMPTION FORMULA	(A+B+C)		
	$(A \times B) \times C \times D \times 1.70 = 1 \text{kg/m}^2$		
	A = Tile Length(mm)	B = Tile Width(mm)	
	C = Tile Thickness(mm)	D = Tile Joint(mm)	
SHELF LIFE	Until <u>12 Months</u> In Original Packaging In Dry		

EPOXY 939



Two — Component Chemical-resistant Epoxy Mortar/grout For Installation And Grouting Of Tiles, Mosaics And Stones, Where Hygiene Is Of Utmost Importance Such As Bathrooms, Kitchens, Living Room, Bedroom, Hospitals, Laboratories, Food & Beverages Industries, Dairy Industries, Swimming Pools, Showrooms, Airports And High Traffic Areas. It Is Chemical Resistant Joint Filler And Is Available In **72 Colors**.

CHARACTERISTICS

Optimized UV And Weather Resistant
Stable And Uniform Colors For All Types Of Tiles/stones
Easy Application And Cleaning As
Cementitious Grout Mortar
High Mechanical Strength
Anti-bacterial & Anti-fungal
Ideal For Waterproof Grouting
Can Be Used As A Grout Mortar And Adhesive
Suitable For The Contact With Food

Excellent Chemical Resistance
Non Toxic
Strong, Durable
Vertical Resistance/Slip Resistance
Joint Width 1 To 12 mm



SCOPE OF USE

Suitable For Chemical-resistant Installation And Grouting Of Floor And Wall Tiles And Mosaic Interiors And Exteriors With Grout Joints Between 1 And 12 Mm Wide, Such As:

- Floor And Wall Tiles, Stones In General For Residential, Public And Industrial Areas
 - Floor And Wall Tiles, Stones In Bathrooms, Showers, Swimming Pool, Tanks, Thermal Or Brackish Water, Spas And Hammams
 - Under floor Heating, Kitchen Countertops, Terraces And Balconies.
 - Suited For Drinking Water And Food Processing Applications
- The Product Is Comply with R2 T & RG As per EN 12004 /EN 13888 & ISO 13007 Standard.



	PART-A	PART- B
MIXING RATIO (BY WEIGHT)	90	10
PACKAGING	1 kg Combo Pack (A+B)	
	0.900 kg	0.100 kg
	5kg Combo Pack(A+B)	
	4.5kg	0.500gm

COLOR	72 Colors	
CONSUMPTION FORMULA	(A+B) (AxB) x C x D x 1.70 = 1kg/m ²	
	A = Tile Length(mm)	B = Tile Width(mm)
	C = Tile Thickness(mm)	D = Tile Joint(mm)

SHELF LIFE Until 12 Months In Original Packaging In Dry

CEMENTITIOUS GROUT

Ignite Cementitious Grout is polymer modified grout, which is used for filling tile joints of 1 mm to 3 mm in both interior and exterior area. It is recommended for ceramic, vitrified, non vitrified tiles and stones.

Application : Residential, commercial, institution, hospital, schools.

Advantage: Easy maintenance, non shrinking and non cracking for tile joint 1-3 mm, hard and durable, economical.

Mixing Ratio: Used approximately 400 ml of Ignite grout admix for 1 kg of grout.

Coverage: Va ries with tiles size and grout width

Packaging: 10Kg Box & 20Kg Bags Pack

Colour: Available in all colours as per shade card.



GROUT ADMIXTURE

ignite Grout Admixture is polymer modified with other chemical to produce liquid Admixture, which is mixed with grout, gives high strength non porous grouts, which exceeds strength of normal grout and makes grout water repellent, flexible & non porous

Advantage : Colour fast, flexible, Comprehensive strength, shock and chemical resistant, reduced water absorption, Easy to clean.

Applications : It imprpoves the performance of cement grout.

Coverage : Varies by application.

Packaging : 400ml, 250ml

Certification : Meet ANSL : A 118.3



TILE GRIP +

Conforms to IS 15477:2019 TYPE 1

Description:

TILE GRIP + is a polymer additive which needs to be pre-mix with cement / cement & sand and then should be mixed with water for installing tiles and natural stones using the traditional cement slurry over freshly laid leveling bed / machan

Features & Benefits:

Easy to use -to be pre-mixed with cement and then mix with water, compatible with both grey & white cement, economical solution for tile fixing with less cement slurry consumption, good adjustability time with high water retention even at elevated temperature, no hollow sound behind tile due to high spreadability, improve adhesion & bond strength with self - curing property, low VOC - For health living.

Area of Application:

Floor, wall, for internal & external area, dry, wet area, domestic applications, commercial applications.

Installation Surface Preparation:

The substrate must be cured , undamaged, compact, rigid, resistant, dry and free from any debonding agents and from damp raising., New concrete slabs shall be damp cured and 28 days old before application which will reduce the shrinkage from tile fixing surface., Expansion joints to be provided & filled with suitable sealent., Don't cover expansion joints with thin set tile adhesive/tile., Ideally leveling bed/machan should be prepared using water : cement:sand:water into ratio of 0.4:1:6 (it can vary as per requirement

Mixing:

- *Tile Grip+ to be mixed with cement/cement & sand.
- *For cement-sand bedding (machan), mix 300gms of Tile Grip+ in 1 bag cement (50 kg) and add this fortified pre-mix mixed of cement & Tile Grip+ with sand in the ratio 1:6, or any other ratio as per industry best practices.
- *Add water to saturate the mix enough and bring to the desired levels and consistency . water dosage can be decreased /increased depending upon cement and sand available at site to achieve the desired consistency for application.
- *For tile or stone laying over the leveling bed; Mix 300 gms of Tile Grip+ in 1 bag cement (50 kg) and add this fortified pre-mix (mixer of cement & Tile Grip+) with required water. Mix it thoroughly, to make a smooth, flowable, lump free slurry.
- * Allow the mix to stand for 2 minutes before using it.
- *Apply either cement slurry or fortified Tile Grip+ + cement slurry over the base slab.
- *Proceed with tile laying using wet - on - wet method with Tile Grip+ + cement slurry
- * If necessary, tiles should be adjusted withing 5-10 minutes of installation.
- *Leave for at least 72 hours before grouting, Remove the spacer before the grouting.

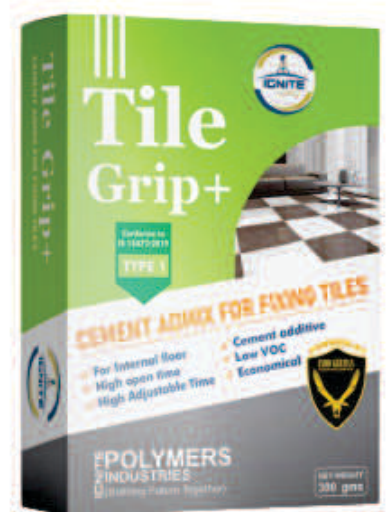
Shelf Life Storage:

12 months for sealed pack when stored under cover, out of direct sunlight, dampproof condition and protect from extremes of temperature

Coverage:

- *Only 300 gms to be mixed with 50 kg bag of cement & add this mixture in water.
- *Coverage will vary depending on the thickness of leveling bed and the mix proportion used to make the leveling bed.

Packing: 300 gms pouch



EXPERT CLEAN - 360

Ignite Export Clean -

360 Tile & Floor Cleaner

All Type of Gloss, Matte , Vitrified Tiles, Unpolished Marbels, Swimming Pools, Sanitary Fittings, Glass Mosaic Tiles etc...

A unique international Formula Meant for Cleaning of tiles & Hard Surface. it Effectively Cleans all Type of scales & stains by hard water, soap scum & dirt. It also kills algae, moulds, fungus & stop their regrowth.



EXPERT CLEAN - 360 SPRAY

Ignite Export Clean - 360

Tile & Floor Cleaner SPRAYABLE

All Type of Gloss, Matte , Vitrified Tiles, Unpolished Marbels, Swimming Pools, Sanitary Fittings, Glass Mosaic Tiles etc...

A unique international Formula Meant for Cleaning of tiles & Hard Surface. it Effectively Cleans all Type of scales & stains by hard water, soap scum & dirt. It also kills algae, moulds, fungus & stop their regrowth.



CLEANX TS - 363

Ignite CleanX TS - 363

TAP & SHOWER CLEANER

Bath Fittings, Bath Accessories, Bath Tubs, Kitchen Sinks, Steel & Brass Fixtures & Double Glazed & Border Tiles

A unique international Formula Meant for Cleaning of taps & Metal Surface. it Effectively Cleans all Type of scales & stains by hard water, soap scum & dirt. It also kills algae, moulds, fungus & stop their regrowth.



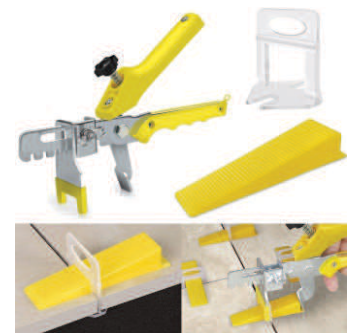
IGNITE SPACERS

Ignite spacers are small, T-shaped tools used to provide even gaps between the tile joints during installation. It is a crucial part of the tile application process, providing a professional finish and even distribution between adjacent tiles. A tile installation done by using the right application tool, like Roff spacers, has a clean look and straight grout lines when the adhesive dries. Roff spacers for tiles come in different sizes: 2, 3, 4, 5, and 6 mm. The availability of different sizes of grout spacers allows professionals to get grout lines ranging from narrow to wider. Depending upon the tile structure, space, and aesthetics, spacers can be used to get clean and equal spaces between tiles. It also ensures that the tile joints have the right amount of product for them to be grouted properly. Using spacers for tiles gives a secured and durable surface. Read Less Packaging Units- 2 / 3 / 4 / 5 / 6 mm Packaging Type- Tool



IGNITE TILE LEVELING SYSTEM

The Tile Leveling System was developed out of a need to diminish costly mistakes due to unlevelled tiles causing lippage in high-end installations. It is the perfect system to use with tile plank and large-format rectified porcelain, marble and stone and the flat base design is ideal for wall tile installations. This time saving system adjusts the height of the tiles and evenly holds their edges throughout the curing process. It is the most cost effective installation method on the market to eliminate lippage. The Tile Leveling System comes in 4 clip sizes, 1/32", 1/16", 1/8" and 3/16", and provides narrow grout lines for tiles up to 1/2" thick.



IGNITE RE-USABLE TILE LEVELER

Ignite reusable tile leveling system ensures flatness between tiles, saving installation time and improve speed of tile laying, Ignite Re-usable Tile Leveler makes 1.5 mm grout like for more space use Ignite tile spacers with reusable Leveler





Registration Certificate

This is to certify that

IGNITE POLYMERS INDUSTRIES
324, SECTOR 9, GURGAON - 122001, HARYANA, INDIA.

has been assessed by RAPL and found to comply with the requirements of

ISO 45001 : 2018

Occupational Health and Safety Management Systems

For the following activities:
AAC BLOCK ADHESIVES, ADHESIVES FOR TILES, STONE ADHESIVES, PU ADHESIVES, GROUTS, EPOXY GROUTS, WALL PUTTY, READY MIX WALL PLASTER, GYPSUM PLASTER, WATERPROOFING, ADMIXTURES, CLEANERS, TROWEL, TOOLS.

Certificate Number: E2023105225
Date of certification: 28/10/2023
1st Surveillance on or before: 27/10/2024
2nd Surveillance on or before: 27/10/2025
Certification Valid Until: 27/10/2026





Director (Certification)
Royal Assessments Pvt. Ltd.
623 A, Tower-B, 7th, Plot No. A-40, Sector-62, Noida-201301, India.
www.raapl.com, info@raapl.com
Phone: +91 120 4211029
This Certificate can be verified at www.raapl.com

This Certificate remains the property of Royal Assessments Private Limited. Must be returned on request or if certificate is withdrawn. Validity of this certificate is subject to successful surveillance audits. RAAPL is accredited by EGAC, EGAC is a member of International Accreditation Forum (IAF) and signatory of MIA.



Registration Certificate

This is to certify that

IGNITE POLYMERS INDUSTRIES
324, SECTOR 9, GURGAON - 122001, HARYANA, INDIA.

has been assessed by RAPL and found to comply with the requirements of

ISO 14001 : 2015

Environmental Management Systems

For the following activities:
AAC BLOCK ADHESIVES, ADHESIVES FOR TILES, STONE ADHESIVES, PU ADHESIVES, GROUTS, EPOXY GROUTS, WALL PUTTY, READY MIX WALL PLASTER, GYPSUM PLASTER, WATERPROOFING, ADMIXTURES, CLEANERS, TROWEL, TOOLS.

Certificate Number: E2023105224
Date of certification: 28/10/2023
1st Surveillance on or before: 27/10/2024
2nd Surveillance on or before: 27/10/2025
Certification Valid Until: 27/10/2026





Director (Certification)
Royal Assessments Pvt. Ltd.
623 A, Tower-B, 7th, Plot No. A-40, Sector-62, Noida-201301, India.
www.raapl.com, info@raapl.com
Phone: +91 120 4211029
This Certificate can be verified at www.raapl.com

This Certificate remains the property of Royal Assessments Private Limited. Must be returned on request or if certificate is withdrawn. Validity of this certificate is subject to successful surveillance audits. RAAPL is accredited by EGAC, EGAC is a member of International Accreditation Forum (IAF) and signatory of MIA.



Registration Certificate

This is to certify that

IGNITE POLYMERS INDUSTRIES
324, SECTOR 9, GURGAON - 122001, HARYANA, INDIA.

has been assessed by RAPL and found to comply with the requirements of

ISO 9001 : 2015

Quality Management Systems

For the following activities:
AAC BLOCK ADHESIVES, ADHESIVES FOR TILES, STONE ADHESIVES, PU ADHESIVES, GROUTS, EPOXY GROUTS, WALL PUTTY, READY MIX WALL PLASTER, GYPSUM PLASTER, WATERPROOFING, ADMIXTURES, CLEANERS, TROWEL, TOOLS.


Certificate Number: E2023105223
Date of certification: 28/10/2023
1st Surveillance on or before: 27/10/2024
2nd Surveillance on or before: 27/10/2025
Certification Valid Until: 27/10/2026





Director (Certification)
Royal Assessments Pvt. Ltd.
623 A, Tower-B, 7th, Plot No. A-40, Sector-62, Noida-201301, India.
www.raapl.com, info@raapl.com
Phone: +91 120 4211029
This Certificate can be verified at www.raapl.com

This Certificate remains the property of Royal Assessments Private Limited. Must be returned on request or if certificate is withdrawn. Validity of this certificate is subject to successful surveillance audits. RAAPL is accredited by EGAC, EGAC is a member of International Accreditation Forum (IAF) and signatory of MIA.



MQA Certification

Certificate of Compliance

This is to certify that

IGNITE POLYMERS INDUSTRIES
324, SECTOR 9, GURGAON, HARYANA-122001, INDIA

Has been assessed by MQA Certification Services and found to be in compliance with meeting the requirements of:




GMP

(Good Manufacturing Practices)

For the Following Activities:
AAC BLOCK ADHESIVES, ADHESIVES FOR ALL TYPE OF TILES, STONE ADHESIVES, PU ADHESIVES, GROUTS, EPOXY GROUTS, WALL PUTTY, READY MIX WALL PLASTER, GYPSUM PLASTER, WATERPROOFING, ADMIXTURES, CLEANERS, TROWEL, TOOLS.

:: Certificate No :: GMP/23M03277
Date of initial registration: 19 October 2023
First Surveillance Audit on or before: 18 October 2024
Second Surveillance Audit on or before: 18 October 2025
Re-certification Due: 18 October 2026

This Certificate is property of MQA and remains valid Subject to satisfactory surveillance audits.

Authorized Signatory
MQA CERTIFICATION SERVICES
130 Thessaly Rd, Nine Elms, London
SW8 5EL, United Kingdom
UKAF-08411

To check validity of the certificate please visit www.mqacertification.com

This certificate of registration is issued by MQA Certification Services, accredited with UKAF CERT LIMITED. Accreditation Body: The Certification Bodies (International) Group Ltd. This certificate remains the property of MQA Certification Services and must be returned upon request.



MQA Certification

Certificate of Compliance

This is to certify that

IGNITE POLYMERS INDUSTRIES
324, SECTOR 9, GURGAON, HARYANA - 122001, INDIA

Has been assessed by MQA Certification Services and found to be in compliance with meeting the requirements of:

OHSAS 18001-2007

(OCCUPATIONAL HEALTH & SAFETY MANAGEMENT SYSTEM)

For the Following Activities:
AAC BLOCK ADHESIVES, ADHESIVES FOR ALL TYPE OF TILES, STONE ADHESIVES, PU ADHESIVES, GROUTS, EPOXY GROUTS, WALL PUTTY, READY MIX WALL PLASTER, GYPSUM PLASTER, WATERPROOFING, ADMIXTURES, CLEANERS, TROWEL, TOOLS.

:: Certificate No :: OHSAS/23M03278
Date of initial registration: 19 October 2023
First Surveillance Audit on or before: 18 October 2024
Second Surveillance Audit on or before: 18 October 2025
Re-certification Due: 18 October 2026

This Certificate is property of MQA and remains valid Subject to satisfactory surveillance audits.





Authorized Signatory
MQA CERTIFICATION SERVICES
130 Thessaly Rd, Nine Elms, London
SW8 5EL, United Kingdom
UKAF-08411

To check validity of the certificate please visit www.mqacertification.com

This certificate of registration is issued by MQA Certification Services, accredited with UKAF CERT LIMITED. Accreditation Body: The Certification Bodies (International) Group Ltd. This certificate remains the property of MQA Certification Services and must be returned upon request.



MQA Certification

Certificate of Compliance

We hereby declare that the technical file of product complied with the requirement of The Construction Materials Directive (89/105/EEC).

Manufacturer
Name : **IGNITE POLYMERS INDUSTRIES**
Address: 324, SECTOR 9, GURGAON, HARYANA - 122001, INDIA

Product: AAC BLOCK ADHESIVES, ADHESIVES FOR ALL TYPE OF TILES, STONE ADHESIVES, PU ADHESIVES, GROUTS, EPOXY GROUTS, WALL PUTTY, READY MIX WALL PLASTER, GYPSUM PLASTER, WATERPROOFING, ADMIXTURES, CLEANERS, TROWEL, TOOLS.

The certificate only has validity if used for the intended product, specific system covering the design, manufacture and final inspection of certified product. The quality system has been assessed, approved and is subject to continuous surveillance according to the Construction Materials Directive (89/105/EEC).

This certificate issued under the following conditions:

1. Single-use or full quality system concerned: the manufacturing of these reformulated models and it does not allow any type of variation procedure, if required.
2. The certificate covers only the manufacturing conditions of the quality system as changed.
3. The conformity is confirmed by positive results of surveillance audits.
4. After lifting of the CE, the manufacturer shall still be under notice of the reformulated models. The CE shall be shown to the local market with the responsibility of the manufacturer after completion of the Declaration of conformity and compliance with all relevant EEC Directives. The statement is based on a single evaluation of one sample of these reformulated product. Not apply to assessment of the final production.

:: Certificate No :: CE/23M03279
Date of initial registration: 19 October 2023
First Surveillance Audit on or before: 18 October 2024
Second Surveillance Audit on or before: 18 October 2025
Re-certification Due: 18 October 2026

This Certificate is property of MQA and remains valid Subject to satisfactory surveillance audits.





Authorized Signatory
MQA CERTIFICATION SERVICES
130 Thessaly Rd, Nine Elms, London
SW8 5EL, United Kingdom
UKAF-08411

To check validity of the certificate please visit www.mqacertification.com

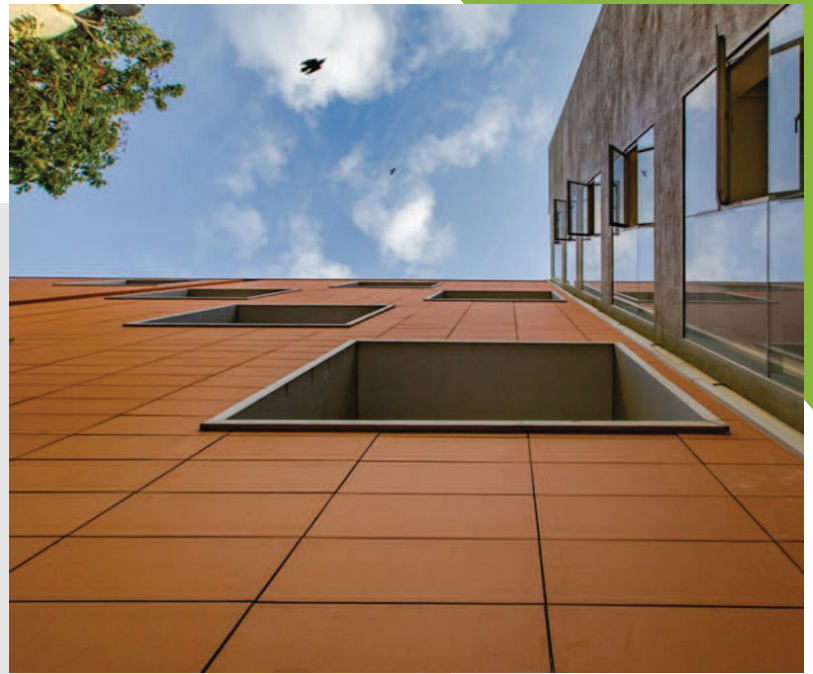
This certificate of registration is issued by MQA Certification Services, accredited with UKAF CERT LIMITED. Accreditation Body: The Certification Bodies (International) Group Ltd. This certificate remains the property of MQA Certification Services and must be returned upon request.

UNIQUE COLLABORATION OF 3 EXPERTS



www.ignitepolymers.com





IGNITE POLYMER INDUSTRIES. BUILDING FUTURE TOGETHER

Unit I : Sector - 37D, Ghari Road, Gurgaon - 122001

Unit II : 213/1, Village Nagla Megha, Meerut Road, Karnal, Haryana-132001

Unit III : Gadarpur - Dineshpur - Matkota Road, Narayanpur, Uttarakhand-263160

Regd. Office : #324, Sector-9, Gurgaon - 122001 Customer Care No. : 9873620002

Email: ignite.poly@gmail.com

Website : www.ignitepolymers.com