

General imsubs P. Ltd.

Quality Water Valves

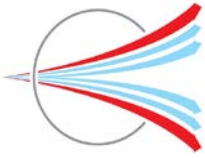
Large valve series

3711/A, GIDC, Phase-IV, Vatva, Ahmedabad-382445, India

Ph.: 91-79-25840845, 40085985

CIN: U29120GJ1992PTC018382

E mail: info@giplindia.com Web: www.giplindia.com



General imsubs P. Ltd.

25 mm, 40 mm, 50 mm, 75 mm, 100 mm (1", 1.5", 2",
3" & 4" inch)

Water solenoid valves

Features

- ✓ Pilot operated diaphragm type valves.
- ✓ Available in Normally closed and bistable (Latching) type.
- ✓ Wide Choice of operating voltage.
- ✓ Valve with manual over ride and flow controller (for 25 mm valve only).
- ✓ High flow, lower pressure drops.
- ✓ Durable synthetic rubber diaphragm.
- ✓ Sturdy, weather and corrosion resistant reinforced Nylon 66 body.
- ✓ Weather resistant, encapsulated coil.

Applications

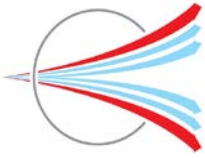
- ✓ Industrial water treatment plants.
- ✓ Farm & Garden Irrigation systems.
- ✓ Landscape watering and management systems.
- ✓ WC flushing systems.
- ✓ Water Supply system.
- ✓ Municipal water supply.

We also manufacture:

Solenoid valves for washing machines, dish washers, vending machine, domestic RO systems, small valves from ¼" to ¾" BSP size.

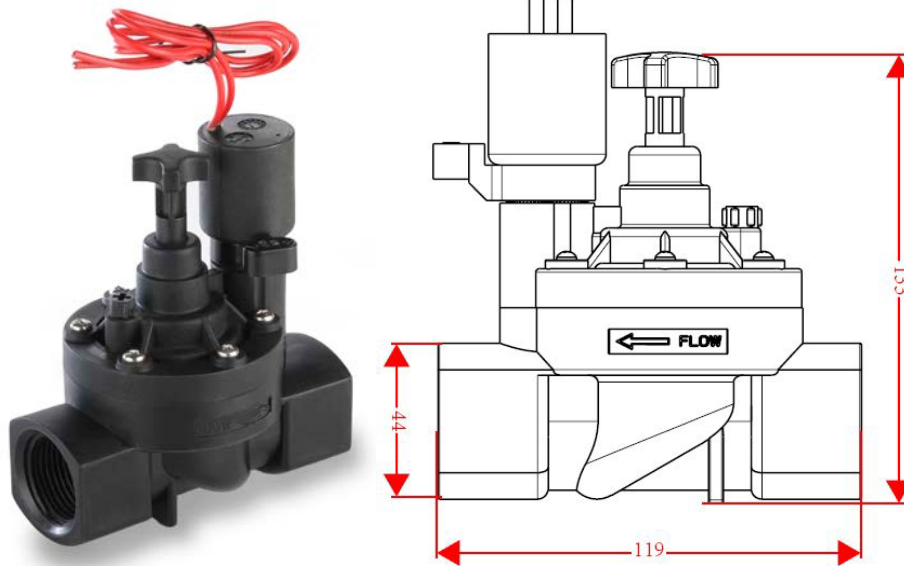
3711/A, GIDC, Phase-IV, Vatva, Ahmedabad-382445, India

**Ph.: 91-79-25840845, 40085985
CIN: U29120GJ1992PTC018382
E mail: info@giplindia.com Web: www.giplindia.com**



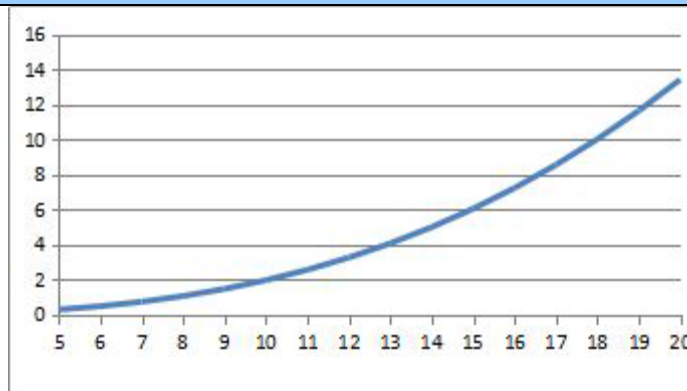
General imsubs P. Ltd.

Model: I-10F-M-F, Appearance



- ✓ Inlet: 1" BSP, Female thread
- ✓ Outlet: 1" BSP, Female thread
- ✓ Operating Pressure : 1.0 to 10 bar
- ✓ Available Coil Voltages : Normally Closed 12 V DC, 24 V DC, 24 V AC, 230 V AC and Bistable Latching (6-40 V DC*).
- ✓ Power consumption : 8 W for NC valves, Latching valve 6-40 V DC, 30-100 mS.
- ✓ Manual Over ride: Yes
- ✓ Flow Controller: Yes
- ✓ Bleeding valve: Yes

Flow Characteristics

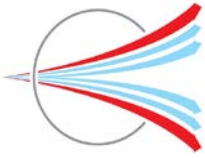


Vertical Axis : ΔH : Head loss / Pressure drop across the valve, in metres of water column - mwc; Horizontal Axis Q = Flow rate, - m³/hr

* Latching coil pulse width and voltage depends and varies on operating conditions

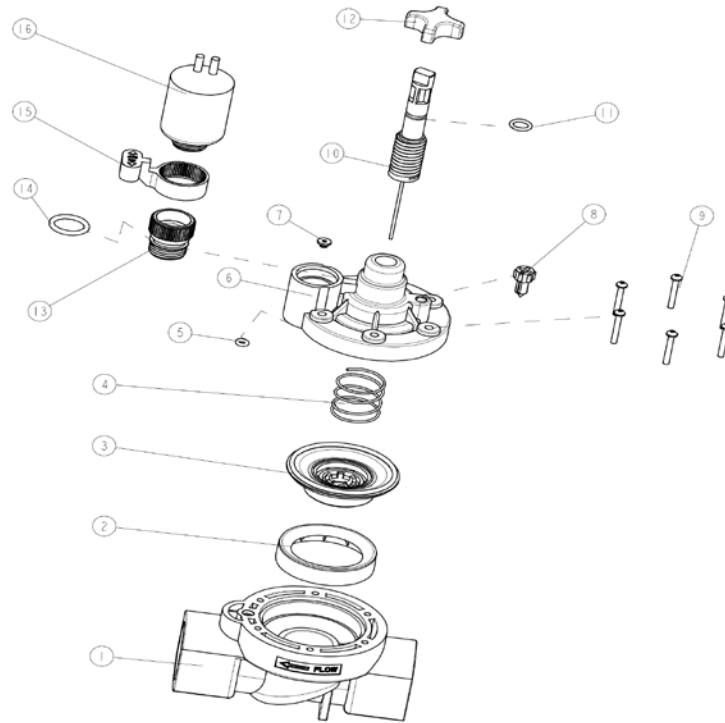
3711/A, GIDC, Phase-IV, Vatva, Ahmedabad-382445, India

Ph.: 91-79-25840845, 40085985
CIN: U29120GJ1992PTC018382
E mail: info@giplindia.com Web: www.giplindia.com



General imsubs P. Ltd.

Models: I-10F-M-F, EXPLODED VIEW AND PART LIST

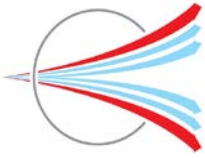


1	Valve Body Reinforced PA66
2	Diaphragm Ring PA66
3	Diaphragm NBR
4	Spring 304 SS
5	O-Ring NBR
6	Valve Bonnet Reinforced PA66
7	Core Plug 304 SS
8	External Bleed Screw POM

9	M4 Bolts x 6 304 SS
10	Flow Regulator Stem POM & 304 SS
11	O-Ring NBR
12	Knob POM
13	Core Seat POM
14	O-Ring NBR
15	Internal Bleed Lever POM
16	Solenoid coil Assembly

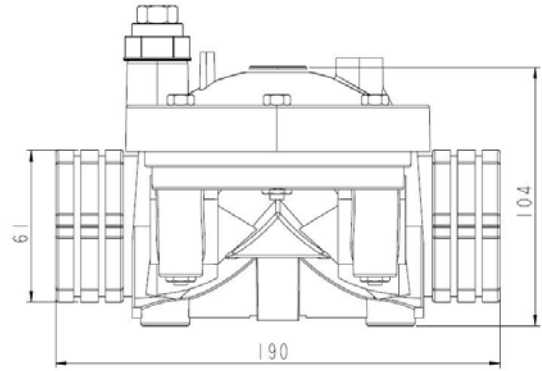
3711/A, GIDC, Phase-IV, Vatva, Ahmedabad-382445, India

Ph.: 91-79-25840845, 40085985
CIN: U29120GJ1992PTC018382
E mail: info@giplindia.com Web: www.giplindia.com



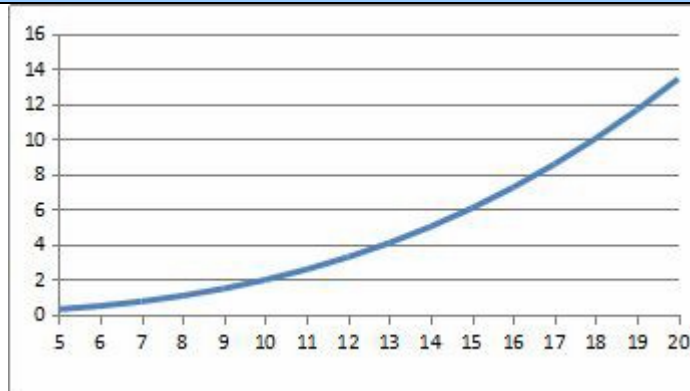
General imsubs P. Ltd.

Model: I-15F-M-F, Appearance



- ✓ **Inlet:** 1.5" BSP, Female thread
- ✓ **Outlet:** 1.5" BSP, Female thread
- ✓ **Operating Pressure :** 1.5 to 10 bar
- ✓ **Available Coil Voltages :** Normally Closed 12 V DC, 24 V DC, 24 V AC, 230 V AC and Bistable Latching (6-40 V DC*).
- ✓ **Power consumption :** 8 W for NC valves, Latching valve 6-40 V DC, 30-100 mS.
- ✓ **Manual Over ride:** No
- ✓ **Flow Controller:** No
- ✓ **Bleeding valve:** No

Flow Characteristics



Vertical Axis : ΔH : Head loss / Pressure drop across the valve, in metres of water column - mwc; Horizontal Axis Q = Flow rate, - m³/hr

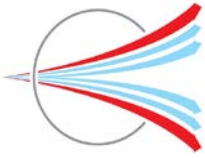
* Latching coil pulse width and voltage depends and varies on operating conditions

3711/A, GIDC, Phase-IV, Vatva, Ahmedabad-382445, India

Ph.: 91-79-25840845, 40085985

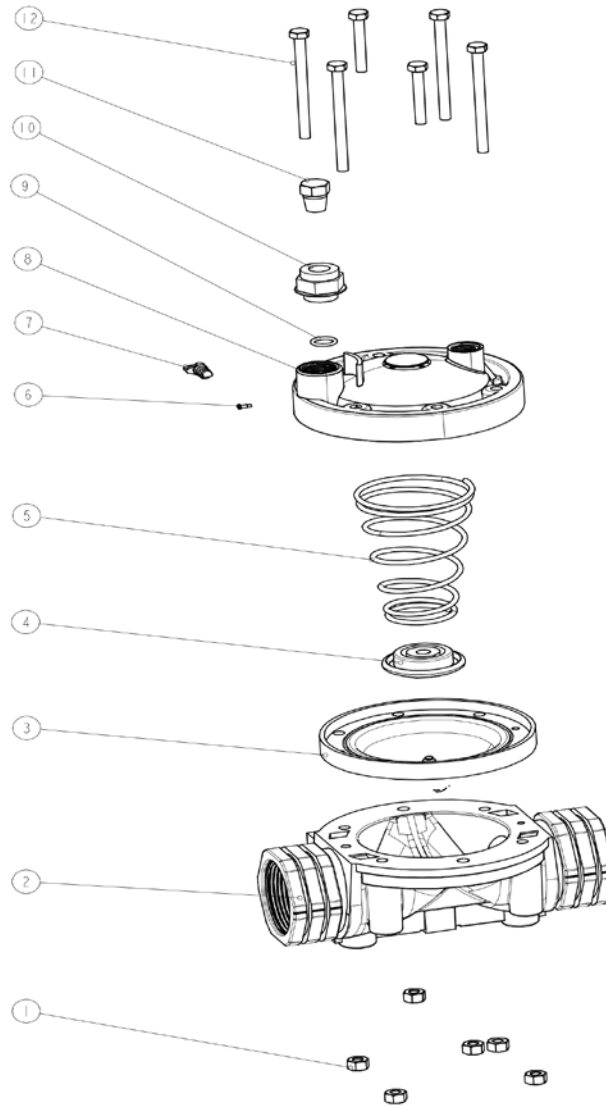
CIN: U29120GJ1992PTC018382

E mail: info@giplindia.com Web: www.giplindia.com



General imsubs P. Ltd.

Model: I-20F-M-F, EXPLODED VIEW AND PART LIST

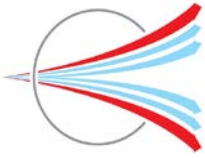


1	Hexagonal Nuts x 6 304 SS
2	Valve Body Reinforced PA66
3	Diaphragm Fabric-reinforced EPDM Rubber
4	Spring Seat POM
5	Spring 304 SS

6	Latch Brass
7	Manual Override Switch POM
8	Valve Bonnet Reinforced PA66
9	O-Ring NBR
10	Adapter Reinforced PA66
11	Screw Plug Reinforced PA66

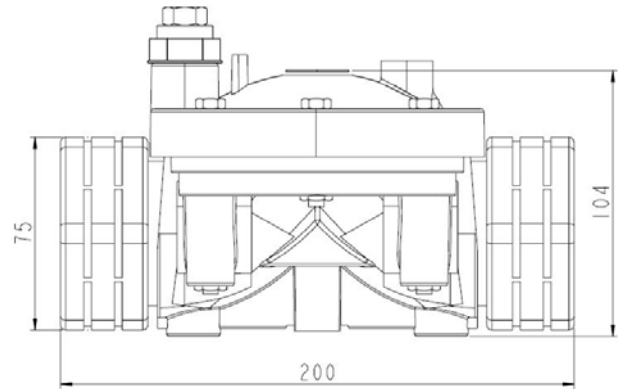
3711/A, GIDC, Phase-IV, Vatva, Ahmedabad-382445, India

Ph.: 91-79-25840845, 40085985
CIN.: U29120GJ1992PTC018382
E mail: info@giplindia.com Web: www.giplindia.com



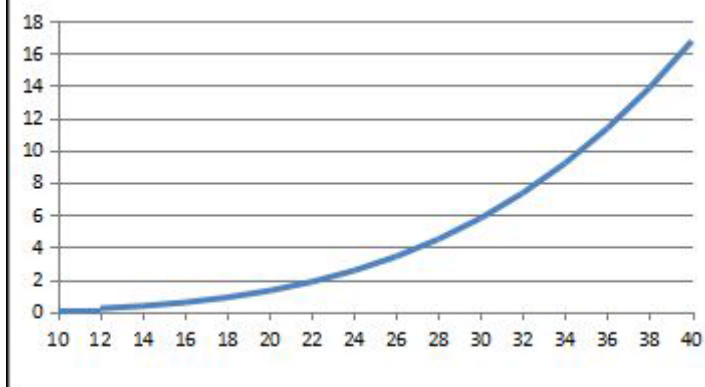
General imsubs P. Ltd.

Model: I-20F-M-F, Appearance



- ✓ Inlet: 2" BSP, Female thread
- ✓ Outlet: 2" BSP, Female thread
- ✓ Operating Pressure : 1.5 to 10 bar
- ✓ Available Coil Voltages : Normally Closed 12 V DC, 24 V DC, 24 V AC, 230 V AC and Bistable Latching (6-40 V DC*).
- ✓ Power consumption : 8 W for NC valves, Latching valve 6-40 V DC, 30-100 mS.
- ✓ Manual Over ride: No
- ✓ Flow Controller: No
- ✓ Bleeding valve: No

Flow Characteristics

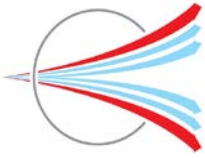


Vertical Axis : ΔH : Head loss / Pressure drop across the valve, in metres of water column - mwc; Horizontal Axis Q = Flow rate, - m³/hr

* Latching coil pulse width and voltage depends and varies on operating conditions

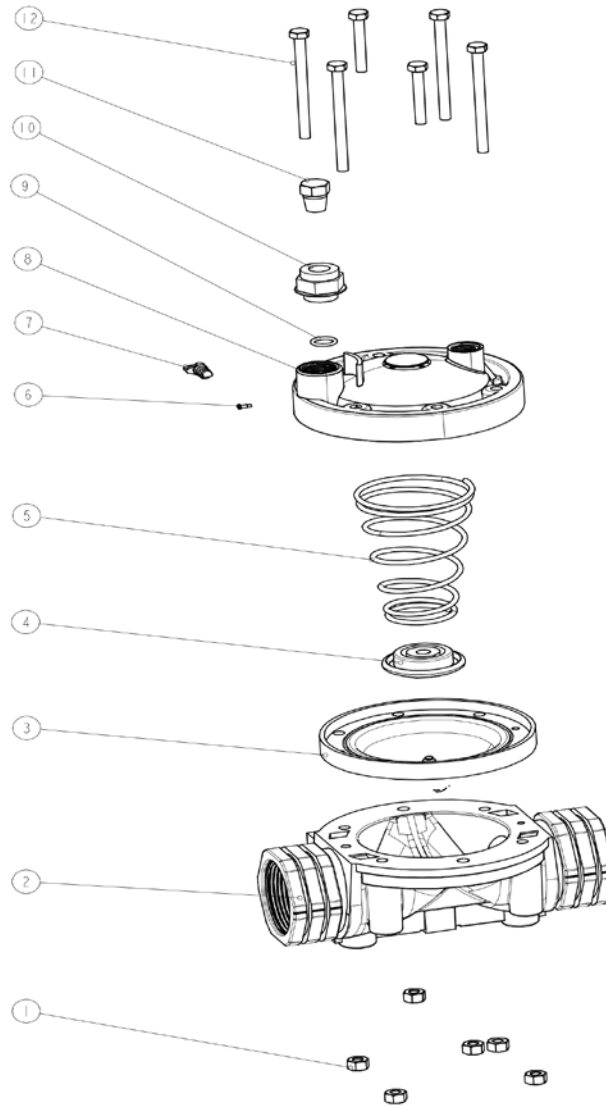
3711/A, GIDC, Phase-IV, Vatva, Ahmedabad-382445, India

Ph.: 91-79-25840845, 40085985
CIN: U29120GJ1992PTC018382
E mail: info@giplindia.com Web: www.giplindia.com



General imsubs P. Ltd.

Model: I-20F-M-F, EXPLODED VIEW AND PART LIST

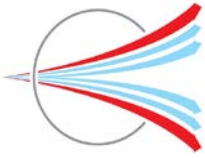


1	Hexagonal Nuts x 6 304 SS
2	Valve Body Reinforced PA66
3	Diaphragm Fabric-reinforced EPDM Rubber
4	Spring Seat POM
5	Spring 304 SS

6	Latch Brass
7	Manual Override Switch POM
8	Valve Bonnet Reinforced PA66
9	O-Ring NBR
10	Adapter Reinforced PA66
11	Screw Plug Reinforced PA66

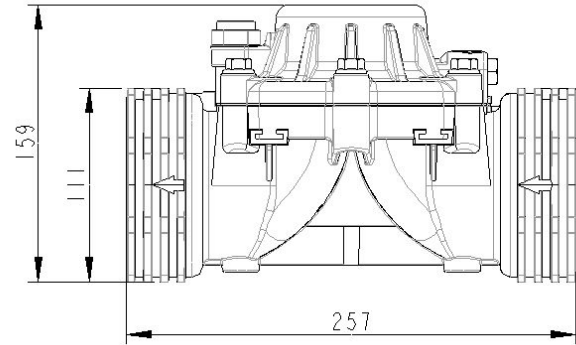
3711/A, GIDC, Phase-IV, Vatva, Ahmedabad-382445, India

Ph.: 91-79-25840845, 40085985
CIN.: U29120GJ1992PTC018382
E mail: info@giplindia.com Web: www.giplindia.com



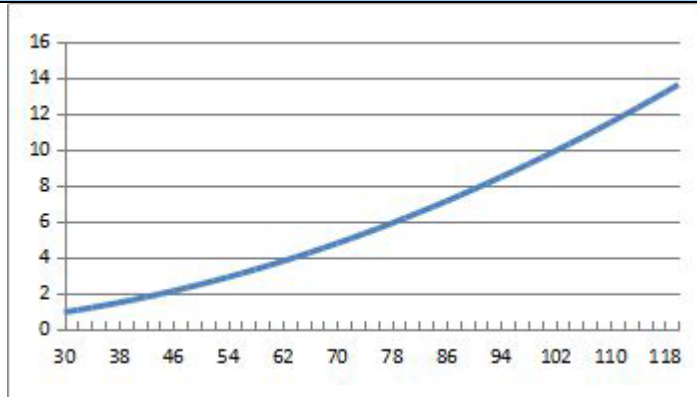
General imsubs P. Ltd.

Model: I-30F-M-F, Appearance



- ✓ **Inlet:** 3" BSP, Female thread
- ✓ **Outlet:** 3" BSP, Female thread
- ✓ **Operating Pressure :** 1.5 to 10 bar
- ✓ **Available Coil Voltages :** Normally Closed 12 V DC, 24 V DC, 24 V AC, 230 V AC and Bistable Latching (6-40 V DC*).
- ✓ **Power consumption :** 8 W for NC valves, Latching valve 6-24 V DC, 30-100 mS.
- ✓ **Manual Over ride:** Yes
- ✓ **Flow Controller:** No
- ✓ **Bleeding valve:** No

Flow Characteristics



Vertical Axis : ΔH : Head loss / Pressure drop across the valve, in metres of water column - mwc; Horizontal Axis Q = Flow rate, - m3/hr

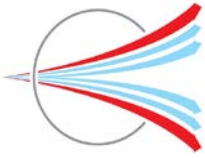
* Latching coil pulse width and voltage depends and varies on operating conditions

3711/A, GIDC, Phase-IV, Vatva, Ahmedabad-382445, India

Ph.: 91-79-25840845, 40085985

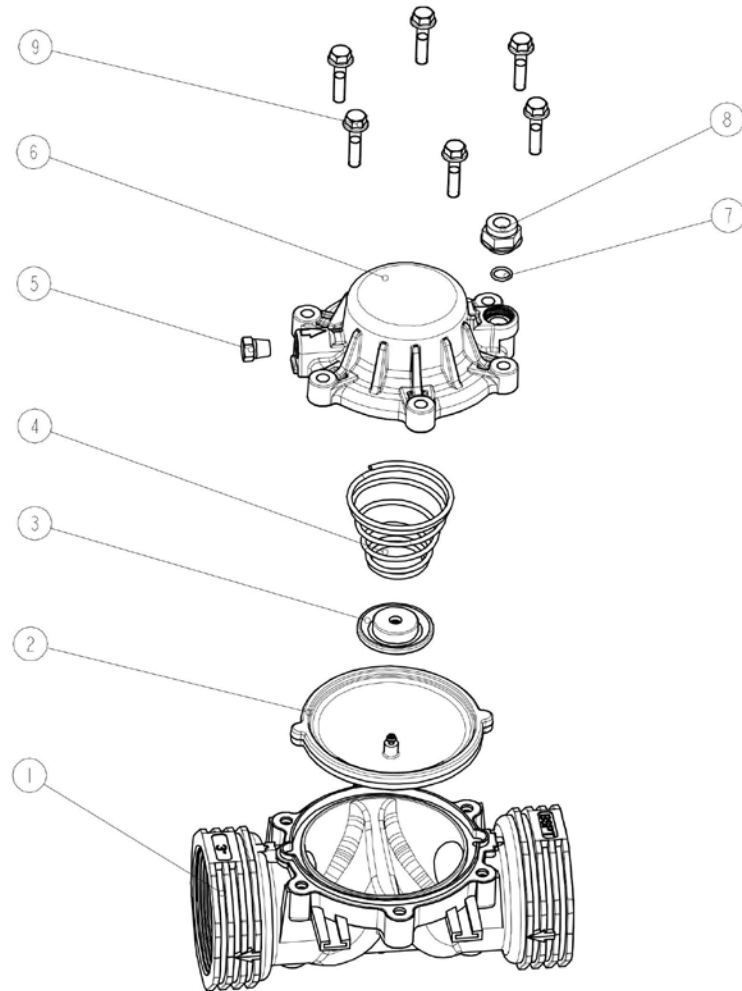
CIN : U29120GJ1992PTC018382

E mail: info@giplindia.com Web: www.giplindia.com



General imsubs P. Ltd.

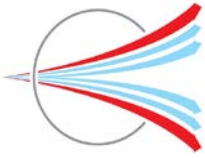
Model: I-30F-M-F, EXPLODED VIEW AND PART LIST



No.	Parts	Material
1	Valve Body	Reinforced PA66
2	Diaphragm	Fabric-reinforced EPDM Rubber
3	Spring Seat	POM
4	Spring	304 SS
5	Screw Plug	Reinforced PA66
6	Valve Bonnet	Reinforced PA66
7	O-ring	NBR
8	Adapter	Reinforced PA66
9	M8 Bolts x 6	304 SS

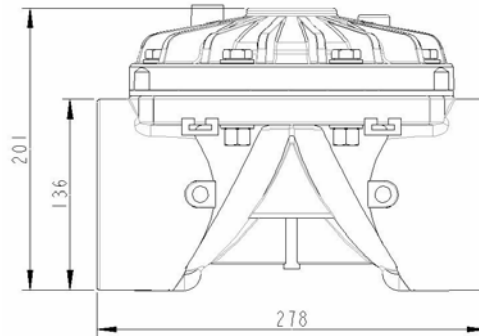
3711/A, GIDC, Phase-IV, Vatva, Ahmedabad-382445, India

Ph.: 91-79-25840845, 40085985
CIN: U29120GJ1992PTC018382
E mail: info@giplindia.com Web: www.giplindia.com



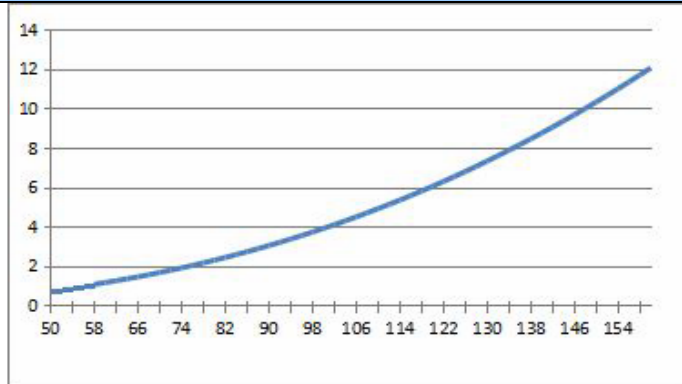
General imsubs P. Ltd.

Model: I-40F-M-F, Appearance



- ✓ Inlet: 4" Solvent Welding
- ✓ Outlet: 4" Solvent Welding
- ✓ Operating Pressure : 1.5 to 10 bar
- ✓ Available Coil Voltages: Normally Closed 12 V DC, 24 V DC, 24 V AC, 230 V AC and Bistable Latching (6-40 V DC*).
- ✓ Power consumption : 8 W for NC valves, Latching valve 6-24 V DC, 30-100 mS.
- ✓ Manual Over ride: No
- ✓ Flow Controller: No
- ✓ Bleeding valve: No

Flow Characteristics

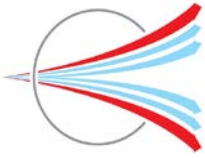


Vertical Axis : ΔH : Head loss / Pressure drop across the valve, in metres of water column - mwc; Horizontal Axis Q = Flow rate, - m³/hr

* Latching coil pulse width and voltage depends and varies on operating conditions

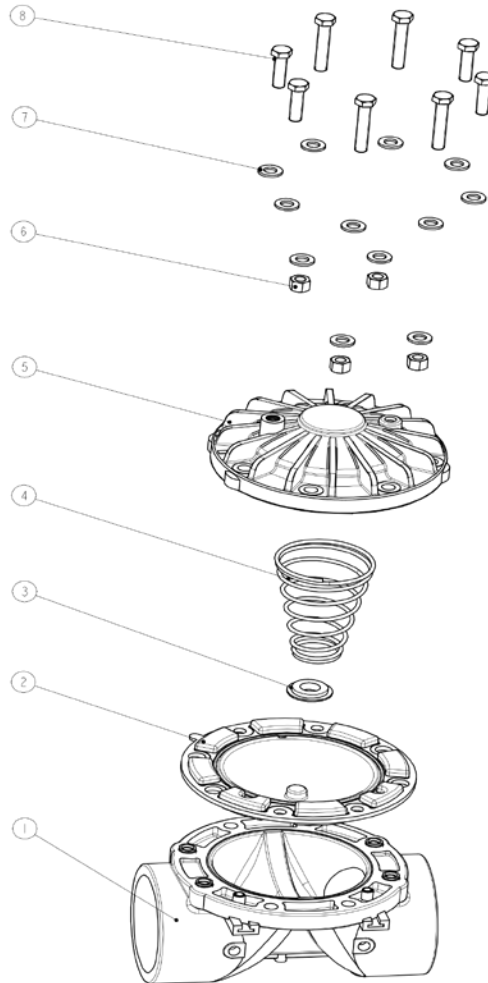
3711/A, GIDC, Phase-IV, Vatva, Ahmedabad-382445, India

Ph.: 91-79-25840845, 40085985
CIN: U29120GJ1992PTC018382
E mail: info@giplindia.com Web: www.giplindia.com



General imsubs P. Ltd.

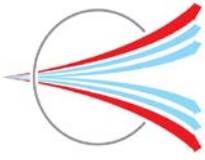
Model: I-40F-M-F, EXPLODED VIEW AND PART LIST



No.	Parts	Material
	Valve Body	UPVC
2	Diaphragm	Fabric-reinforced EPDM Rubber
	Spring Seat	POM
4	Spring	304 SS
5	Valve Bonnet	PA66
	Nuts x 8	#45 Steel
7	Washers x 8	#45 Steel
8	M12 Bolts x 8	#45 Steel

3711/A, GIDC, Phase-IV, Vatva, Ahmedabad-382445, India

Ph.: 91-79-25840845, 40085985
CIN: U29120GJ1992PTC018382
E mail: info@giplindia.com Web: www.giplindia.com



General imsubs P. Ltd.

About Us :

General Imsubs is pioneer manufacturer of water valves in India since 1992. We have been manufacturing wide range of water valves catering to the need of growing appliances industry.

Valve manufactured by General Imsubs complies with stringent international product standards.

All valves supplied by General Imsubs are warranted for performance. Our sophisticated manufacturing and tracking systems can track valves upto its component and raw material level. All valves are custom labeled with customer name to ease tracking even at customer end.

We also manufacture compressed air saving products like air amplifying blow guns, blow nozzles, vacuum gun, vortex tubes and panel coolers. For more details visit www.giplindia.com

3711/A, GIDC, Phase-IV, Vatva, Ahmedabad-382445, India

Ph.: 91-79-25840845, 40085985
CIN: U29120GJ1992PTC018382
E mail: info@giplindia.com Web: www.giplindia.com