

QUALITY GOES ON BEFORE THE NAME GOES ON



QUALITY GOES ON BEFORE THE NAME GOES ON



Products

- Pre-cured Tread Rubber
- Pre-cured Tread Rubber for O.T.R.
- Conventional Tread Rubber
- Bonding Gum
- Under Tread Stripe (U.T.S.)
- Black Vulcanising Solution

About Our Company

Moj Rubber Pvt. Ltd. is the leading manufacturer of all type of Tyre Retreading materials. Offering wide Range of patterns with outstanding field performance.

We are pledged to win your satisfaction as we trust in the quality of our products, by checking every stage of procurement of raw material, production and distribution.

We give best alternative to new tyres with performance and reliability equal to or better than new tyres.

Quality

Our quality control system is ISO 9001:2008 certified by STANCERT. This is for assuring that we provide continuous service to our valuable with quality & quantity.



ISO 9001:2008
CERTIFIED COMPANY



Pre-cured Tread Rubber



Conventional Tread Rubber



Bonding Gum



Under Tread Stripe (U.T.S.)



Black Vulcanising Solution

Pre-cured Tread Rubber

Made out of high quality raw material like synthetic rubber & natural rubber. Available in widest range of designs and size of small to huge tyre. Admired by worldwide and run through all road condition. Used for Cold Process, Suitable for all types and sizes of tyres in various designs.

Conventional Tread Rubber

Our hot compound is enriched with sufficient antioxidants so it will enhance more durability than other brands. Specially designed compound for extra shelf life and high mileage available in different grades to suit different applications. Available in customer specified sizes (such a Truck, Tractor & O.T.R.).

Bonding Gum

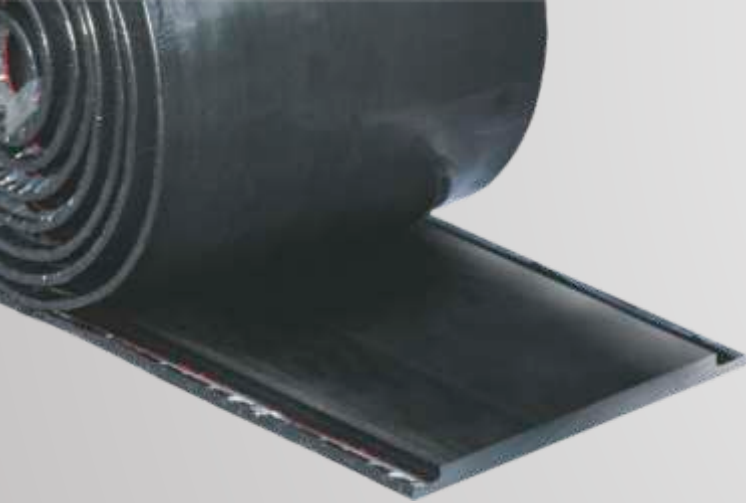
Our Bonding gum highly tackifying and made from 100% natural rubber to increase tack. Easily available in 5 kg. Roll as a box packing of 20 Kg. It can be used to fill nail holes and repair injured tyre casing.

Under Tread Stripe (U.T.S.)

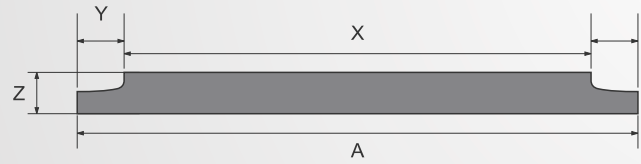
UTS means UNDER TREAD STRIPE, It can be used to repair side wall of tyre casing and fill the ruffed surface of tyre casing.

Black Vulcanising Solution

Our vulcanising solution is high quality vulcanising solution and available in 25 liters tin to handle easily and compatible with both hot & cold rubber process. Our vulcanising solution has standard gum property which can help to applied directly on the buffed area of belt without adding any solvents. Due to air tight tin packing, even the last drop of solution can be utilised for retreading process.



Conventional Tread Rubber Specifications



eg.	100x150x26	110x160x28	125x175x30	140x180x32	190x240x50
X	100	110	125	140	190
Y	25	25	25	20	25
Z	26	28	30	32	50
A	150	160	175	180	240

*And also avail in customer's specification

Testing Lab

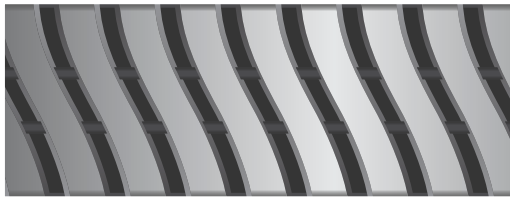
MOJ Rubber Pvt. Ltd. believes in achieving excellence through continuous improvement in our Products, Process & Systems. We are committed to provide Quality Products on time, Ensure to satisfy customer's need and expectation.

For that each sample is analysed at our laboratory for Perfection, Standard and Accuracy.....





23.5 X 25



23.5 X 25

**TYRE
SIZE**

**WIDTH
(MM)**

**LENGTH
(INCHES)**

**THICKNESS
(MM)**

**BASE
(MM)**

**WEIGHT
(APP.KG.)**

23.5*25

530

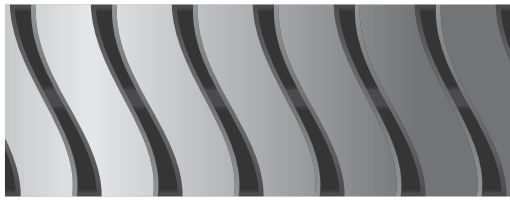
192

45

9

96.500 TO 97.500

18.00 X 25



18.00 X 25

18.00*25

435

201

54

8

104.500 TO 105.500

18.00*25

435

201

49

6

92.500 TO 93.500

14.00 X 25



14.00 X 25

14.00*25

325

166

37

9

43.000 TO 44.000

14.00*25

325

166

33

7

38.000 TO 39.000

MST



MST

12.00*24

240

149

23

3.5

18.800 TO 19.000

12.00*20

220

129

18.25

3.5

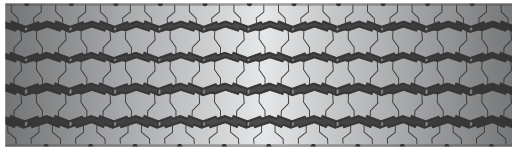
12.100 TO 12.300

ZDY



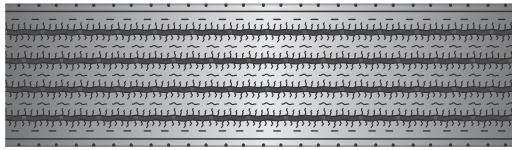
ZDY

M9



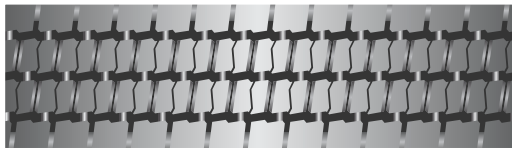
M9

ZM



ZM

BS



Black Stone

SM



Super Moj

TYRE
SIZE

WIDTH
(MM)

LENGTH
(INCHES)

THICKNESS
(MM)

BASE
(MM)

WEIGHT
(APP.KG.)

EXPORT	250	147	16.25	3.5	14.900 TO 15.100
12.00R*24	250	130	16.25	3.5	13.200 TO 13.400
EXPORT	230	147	19.5	4	15.900 TO 16.100
11.00R*20	230	130	19.5	4	14.100 TO 14.300

EXPORT	240	147	18.5	3.5	16.200 TO 16.400
12.00R*20	240	130	18.5	3.5	14.300 TO 14.500
11.00*20	220	130	15	4.5	11.200 TO 11.400
10.00*20	208	128	15	4.5	10.100 TO 10.300
6.70*15 / 6.50*20 / 7.00R*15	138	93	12.25	4	3.800 TO 4.000

10.00*20	210	128	14.75	4.5	10.200 TO 10.400
----------	-----	-----	-------	-----	------------------

11.00*20	220	128.5	16.25	5.25	11.200 TO 11.400
10.00*20	210	128	14	4	10.900 TO 11.100

10.00*20	205	128	14.75	4.25	10.300 TO 10.500
7.50*16	160	99	13	3.3	5.300 TO 5.500
7.00*15	150	97	13.3	3.5	4.800 TO 5.000

Ajax



Ajax

TYRE SIZE	WIDTH (MM)	LENGTH (INCHES)	THICKNESS (MM)	BASE (MM)	WEIGHT (APP.KG.)
10.00*20 (Super)	205	127	16.5	3.5	11.300 TO 11.500
10.00*20 (Lower)	205	127	16	3.5	10.300 TO 10.500
10.00*20	200	127	16	3.9	9.800 TO 10.000
9.00*20	187	124	16.5	4	9.700 TO 9.900
9.00*20 (Lower)	186	124	14.5	4	8.300 TO 8.500
8.25*20	168	119	14	3	7.300 TO 7.500
8.25*16	168	102	14	3	6.200 TO 6.400
7.50*16	158	99	15.5	3.9	5.700 TO 5.900
7.50*16	156	99.5	13.2	4	5.000 TO 5.200
7.50*16, 7.00*15	150	97	15	3.5	5.300 TO 5.500
6.70*15, 6.50*20, CAR	140	93.5	14.5	3	4.900 TO 5.100
6.00*16, 6.70*15	130	88	15	4.25	4.300 TO 4.500
6.00*16	122	90	15	4	3.800 TO 4.000
MINI DOR, 5.20*14	102	59	12	4	1.800 TO 2.000
MINI DOR, 5.20*14	101	59	11	3.5	1.500 TO 1.700

JT



Jet Track

10.00*20 (Heavy)	205	127	17.15	3.4	11.300 TO 11.500
10.00*20 (Medium)	205	127	15.5	3.4	10.300 TO 10.500
10.00*20 (Lower)	205	127	16.5	4	9.900 TO 10.100
10.00*20	195	126	17.5	4.5	9.900 TO 10.100
9.00*20	190	123	16.6	3.5	9.800 TO 10.000
9.00*16	190	108	16.6	3.5	8.600 TO 8.800
9.00*20	187	124	14.5	3	8.700 TO 8.900
9.00*16	187	108	14.5	3	7.500 TO 7.700
8.25*20	170	118	16	3.5	7.900 TO 8.100
8.25*16	170	100	16	3.5	6.600 TO 6.800
7.50*16, 78*15	156	97	17	3.7	6.100 TO 6.300
7.50*16, 7.00*15	150	97	15	3.5	5.000 TO 5.200
6.00*16, TATA ACE	120	66	14.25	4	2.800 TO 3.000

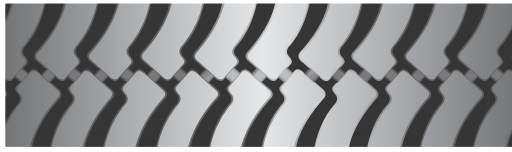
RS



Road Star

12.00*20/24	220	138	18.5	4	13.700 TO 13.900
10.00*20	205	127	17.5	3.5	10.300 TO 10.500
10.00*20	195	125	18	3	9.900 TO 10.100

EX



Extreme

**TYRE
SIZE**

**WIDTH
(MM)**

**LENGTH
(INCHES)**

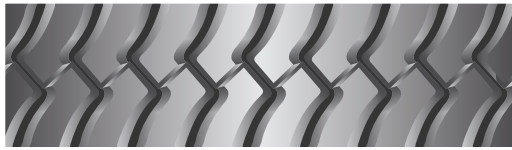
**THICKNESS
(MM)**

**BASE
(MM)**

**WEIGHT
(APP.KG.)**

10.00*20 (Heavy)	205	127	18.7	4	11.200 TO 11.400
10.00*20 (Lower)	205	127	18	4	10.100 TO 10.300

MS



Mines Stone

10.00*20	205	127	17	3.7	10.700 TO 10.900
10.00*20 (Lower)	205	127	16	4	9.800 TO 10.000
9.00*20	187	124	17.7	3.5	9.200 TO 9.400
9.00*16	187	108	17.7	3.5	8.000 TO 8.200
8.25*20	170	118	17.3	4	8.200 TO 8.400
8.25*16	170	100	17.3	4	7.000 TO 7.200

TS



Truck Star

11.00*20	215	127	18.5	4	11.800 TO 12.000
10.00*20	205	127	16.5	3.5	9.800 TO 10.000

KH



KH

10.00*20	210	127	18.7	4.5	11.300 TO 11.500
----------	-----	-----	------	-----	------------------

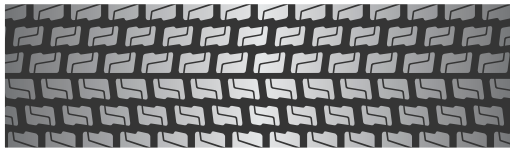
MAX



Maxima

10.00*20	210	128	17.2	5	10.800 TO 11.000
10.00*20	205	127	17.2	4	10.300 TO 10.500

MT



Moj Track

**TYRE
SIZE**

**WIDTH
(MM)**

**LENGTH
(INCHES)**

**THICKNESS
(MM)**

**BASE
(MM)**

**WEIGHT
(APP.KG.)**

10.00*20

210

128

18.7

4.4

10.800 TO 11.000

SL



Semi Lug

10.00*20

207

127

17

4

11.000 TO 11.200

10.00*20

205

127

15.5

3.5

10.200 TO 10.400

9.00*20

190

123

16.7

3.7

9.500 TO 9.700

7.50*16

158

98

16.5

4.1

5.900 TO 6.100

6.00*16, 6.70*15

132

88

16

4.3

4.400 TO 4.600

6.00*16

124

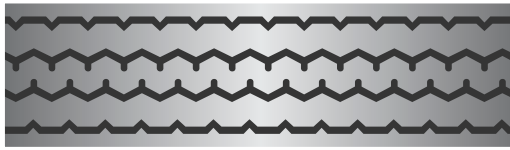
87

16

4.2

4.100 TO 4.300

VK



Viking

10.00*20

205

128

15.1

3.4

10.300 TO 10.500

9.00*20

187

124

16

3

9.200 TO 9.400

7.50*16, 7.8*15

156

97

15.6

3.7

6.000 TO 6.200

7.50*16, 7.00*15

150

97

13.7

3.5

5.000 TO 5.200

6.70*15, 6.50*20

140

93

15

3.75

4.700 TO 4.900

6.00*16

120

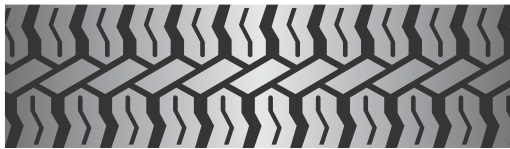
90

14.5

3.8

3.800 TO 4.000

CL



Cross Lug

10.00*20

205

127

16

3.2

10.300 TO 10.500

7.50*16

160

97

14.2

3.5

5.300 TO 5.500

CH



Challenger

10.00*20

205

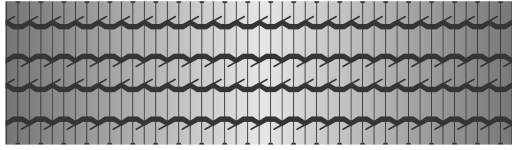
127

16

3

9.800 TO 10.000

MM



Moj Magic

**TYRE
SIZE**

**WIDTH
(MM)**

**LENGTH
(INCHES)**

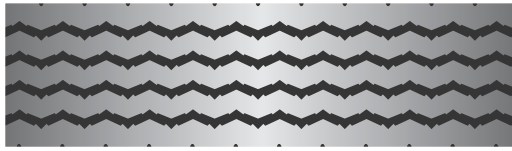
**THICKNESS
(MM)**

**BASE
(MM)**

**WEIGHT
(APP.KG.)**

11.00*20, 10.00*20	210	128	17	3.75	11.000 TO 11.200
9.00*20	187	124	17	3.75	9.200 TO 9.400
9.00*16	187	108	17	3.75	8.000 TO 8.200

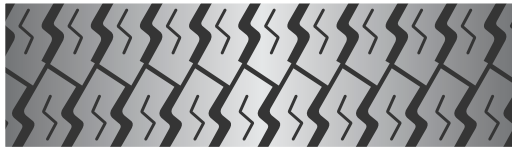
FT



Fast Track

10.00*20	205	127	15	3.5	9.800 TO 10.000
8.25*20	168	119	14	3.5	6.800 TO 7.000
8.25*16	168	102	14	3.5	5.800 TO 6.000

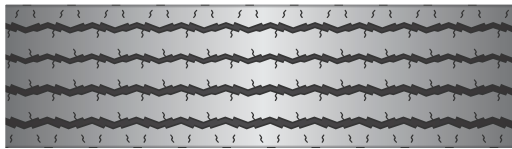
ML



Moj Lug

8.25*20	172	118	14	4	7.400 TO 7.600
8.25*16	172	101	14	4	6.300 TO 6.500

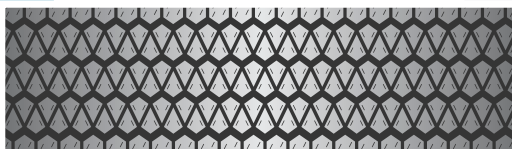
FF



FF

8.25*20	168	118	15	5	7.200 TO 7.400
8.25*16	168	102	15	5	6.100 TO 6.300

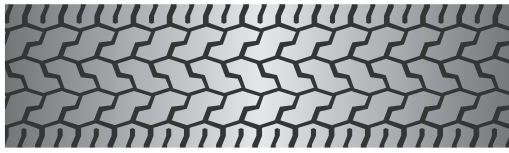
HTR



HTR

192 / 215R15	174	87	14.5	3.5	4.300 TO 4.500
--------------	-----	----	------	-----	----------------

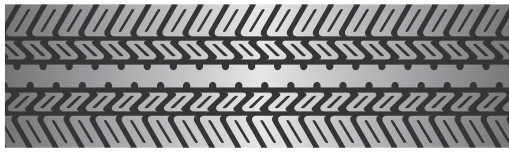
GD



Glider

TYRE SIZE	WIDTH (MM)	LENGTH (INCHES)	THICKNESS (MM)	BASE (MM)	WEIGHT (APP.KG.)
192 / 215R15	173	87	12	3.6	4.100 TO 4.300

Zigma



Zigma

192 / 215R15	173	87	15	4	5.100 TO 5.300
--------------	-----	----	----	---	----------------

TF



Tractor Front

7.50*16	158	94	18	4	5.500 TO 5.700
6.00*16	132	90	21.5	4.5	4.600 TO 4.800
TRACTOR FRONT	127	90	17	4.5	3.600 TO 3.800

TF



Tractor Front

7.50*16	160	96	20	3.5	6.000 TO 6.200
6.00*16, 6.50*20	140	105	22	4	6.000 TO 6.200
TRACTOR FRONT	128	91	17	3	4.000 TO 4.200
MINI TRACTOR	100	76	13	3.5	2.000 TO 2.200

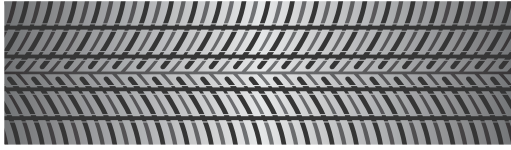
MG



Moj Grip

7.00R*15, 6.70*15	142	91	12.3	3.3	3.300 TO 3.500
-------------------	-----	----	------	-----	----------------

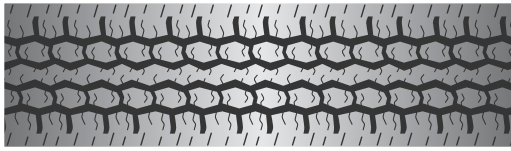
MR



Moj Radial

TYRE SIZE	WIDTH (MM)	LENGTH (INCHES)	THICKNESS (MM)	BASE (MM)	WEIGHT (APP.KG.)
6.70*15, CAR	140	90	14	3	3.700 TO 3.900

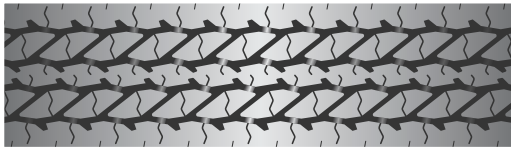
RM



Radial Master

7.00R*15	142	92	14	3.5	4.300 TO 4.500
----------	-----	----	----	-----	----------------

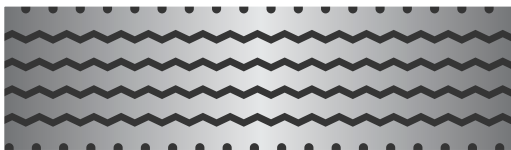
TDR



TDR

7.00R*15	145	92	14	4	4.300 TO 4.500
----------	-----	----	----	---	----------------

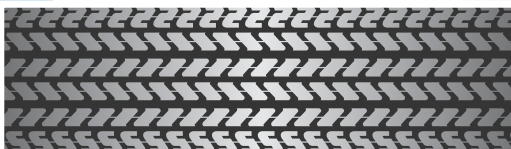
TP



Transporter

7.50*16	148	97	15	3.8	5.300 TO 5.500
7.00*15	148	92	15	3.8	4.900 TO 5.100
6.00*16	125	90	15.3	4.25	4.000 TO 4.200

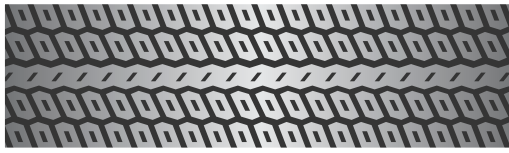
PR



Power Radial

78*15	155	84	13.25	3.75	3.600 TO 3.800
-------	-----	----	-------	------	----------------

Astro



Astro

TYRE SIZE	WIDTH (MM)	LENGTH (INCHES)	THICKNESS (MM)	BASE (MM)	WEIGHT (APP.KG.)
7.50*16, 78*15	156	88	15.4	3.7	4.900 TO 5.100

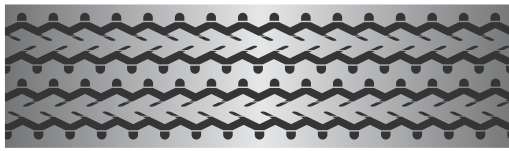
Rover



Rover

6.00*16, 6.70*15	132	90	14.5	3	4.000 TO 4.200
6.00*16	123	90	14.5	3.5	3.600 TO 3.800

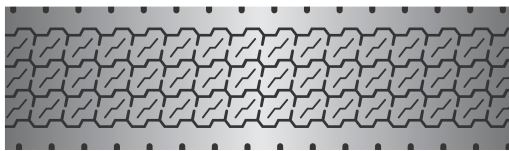
SK



Speed King

6.00*16, 6.70*15	133	91	14.5	3.4	4.000 TO 4.200
------------------	-----	----	------	-----	----------------

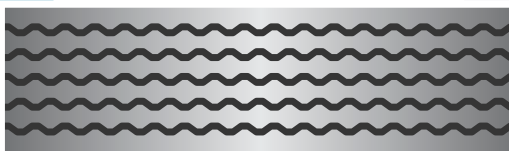
BRYR



BRYR

6.00*16	119	89	13.2	3.2	3.200 TO 3.400
TATA ACE, CAR SIZE	119	66	13.2	3.2	2.300 TO 2.500

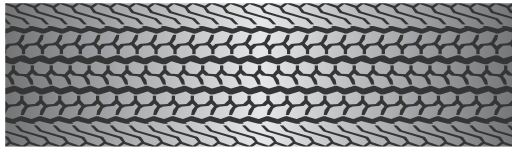
Mojax



Mojax

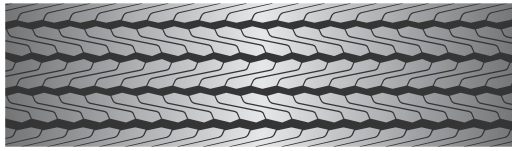
6.00*16	117	89	12.5	3.25	3.300 TO 3.500
AMBASSADOR, CAR SIZE	117	66	12.5	3.25	2.300 TO 2.500
5.20*14, AMBASSADOR, CAR SIZE	105	78	10	2.75	2.100 TO 2.300
5.20*14, 4.50*12, 5.65*12	95	68	10	2.75	1.600 TO 1.800

MXL / MXM



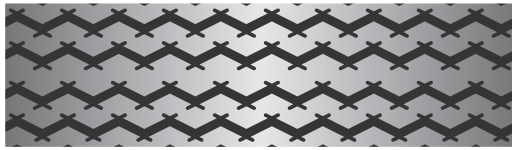
Maximus

ME



Millennium

AT



Auto

TYRE SIZE	WIDTH (MM)	LENGTH (INCHES)	THICKNESS (MM)	BASE (MM)	WEIGHT (APP.KG.)
-----------	------------	-----------------	----------------	-----------	------------------

6.00*16 (MXL)	115	87	12	3	2.900 TO 3.100
AMBASSADOR, CAR SIZE	115	82	12	3	2.700 TO 2.900
AMBASSADOR, CAR SIZE	110	82	12	2.75	2.600 TO 2.800

5.20*14, AMBASSADOR, CAR SIZE	105	77	11	2.5	2.200 TO 2.400
5.20*14, 4.50*12, 5.65*12	100	76	10.5	2	1.800 TO 2.000
5.20*14, 4.50*12, 5.65*12	95	67	11.25	2	1.700 TO 1.900
5.20*14, 4.50*12, 5.65*12	90	67	10	2	1.400 TO 1.600

RICKSHAW	85	50	10.5	2.2	1.100 TO 1.200
----------	----	----	------	-----	----------------

*Highlighted with Red color are newly launched designs.



PRODUCT APPLICABLE FOR



AGRICULTURE



PUBLIC TRANSPORT



GOODS TRANSPORT



EARTH MOVERS

ISO 9001:2008 CERTIFIED COMPANY



MOJ RUBBER PVT. LTD.

PLOT NO:- G / 1108, NEAR TELEPHONE EXCHANGE,
LODHKA G.I.D.C. METODA-360 021, DIST. RAJKOT, GUJARAT, INDIA.

Ph. : +91 2827 287234, 287230

E-Mail : mileage@mojrubber.com

Visit us at : www.mojrubber.com