

## OUR VALUED CLIENTS



AN ISO 9001:2005  
CERTIFIED COMPANY

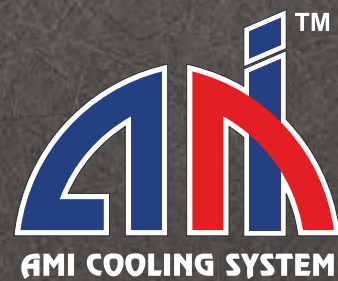


## SEGMENTS WE SERVE



**AMI COOLING SYSTEM**  
Since 1992

[www.amicoolingsystem.com](http://www.amicoolingsystem.com)



AHMEDABAD  
Plot No. : 190-191, Road No.3, G.I.D.C. Kathwada,  
Ahmedabad-382430. Gujarat-India.

**AUSTRALIA**  
39, Baldock Road, Ingle Farm, Adelaide,  
Australia.

+91 757 505 0371 / 2 / 3  
+91 966 250 7629  
+91 982 525 6117

sales@amicoolingsystems.com  
amicoolingsystem13@gmail.com  
amicoolingsystems22@gmail.com

+61414192251

[www.amicoolingsystems.com](http://www.amicoolingsystems.com)



**CHILLING PLANT - 2 TR TO 30 TR**



[www.amicoolingsystem.com](http://www.amicoolingsystem.com)

### THE COMPANY

AMI Cooling Systems is a principal Manufacturer, Exporter, Supplier & Trader in the field of Cooling Equipment. Chilling Plant, Air Chiller, Water Cooled Water Chiller, Industrial Water Chiller, Heat Pump, Ice Block Making Machine, Cooling Tunnel & All types of Heating and Cooling related technologies, Since 1992.

We incorporate effective material, methods, experience and thorough engineering work to produce the best possible cooling equipment for our clients. The offered products are engineered to ensure cost-effectiveness, long performance life and efficiency. We not only offer quality products to our clients but also offer satisfactory solutions that meet all their needs. Also, we serve different industries & provide right products for their applications.

### PRODUCT RANGE

- |                                 |                            |                             |
|---------------------------------|----------------------------|-----------------------------|
| ♦ Water Chilling Plant          | ♦ Air Chiller              | ♦ Water Cooled Chiller      |
| ♦ Air Cooled Chiller            | ♦ Industrial Water Chiller | ♦ Glycol Base Water Chiller |
| ♦ Oil Chiller                   | ♦ RMC Plant chiller        | ♦ Bio Gas Dryer             |
| ♦ Swimming Pool Heat Pump       | ♦ Domestic Heat Pump       | ♦ Ice Block Making Machine  |
| ♦ Tube Ice Machine              | ♦ Heat Exchanger           | ♦ Cooling Tunnel            |
| ♦ Individual Quick Frazer (IQF) | ♦ Carbonated Water Chiller |                             |

***Selling Something & Winning Trust***

## WATER CHILLER - 2 TR - 5 TR



It is the most common type of heat exchanger in Power Plant, Chemical Industry, Textile Industry, Air Condition Industry, Pharma Industry, Food and Beverages, Plastic Industry, Dairy Industry, Laboratory Industry, IT Industry, Printing Industry, Refrigeration Industry and many more applications.

## RMC PLANT CHILLER



RMC Plant chiller are customized for concrete mixing and cooling applications with 4°C chilled water temperatures, as per the process requirement. The major components in the refrigeration circuits are chosen or designed as per the available site conditions and utilities. we are making **10 TR to 250 TR** RMC Plant.

## SCREW CHILLER



It is the most common type of heat exchanger in Power Plant, Chemical Industry, Textile Industry, Air Condition Industry, Pharma Industry, Food and Beverages, Plastic Industry, Dairy Industry, Laboratory Industry, IT Industry, Printing Industry, Refrigeration Industry. and many more applications. 50 TR to 150 TR



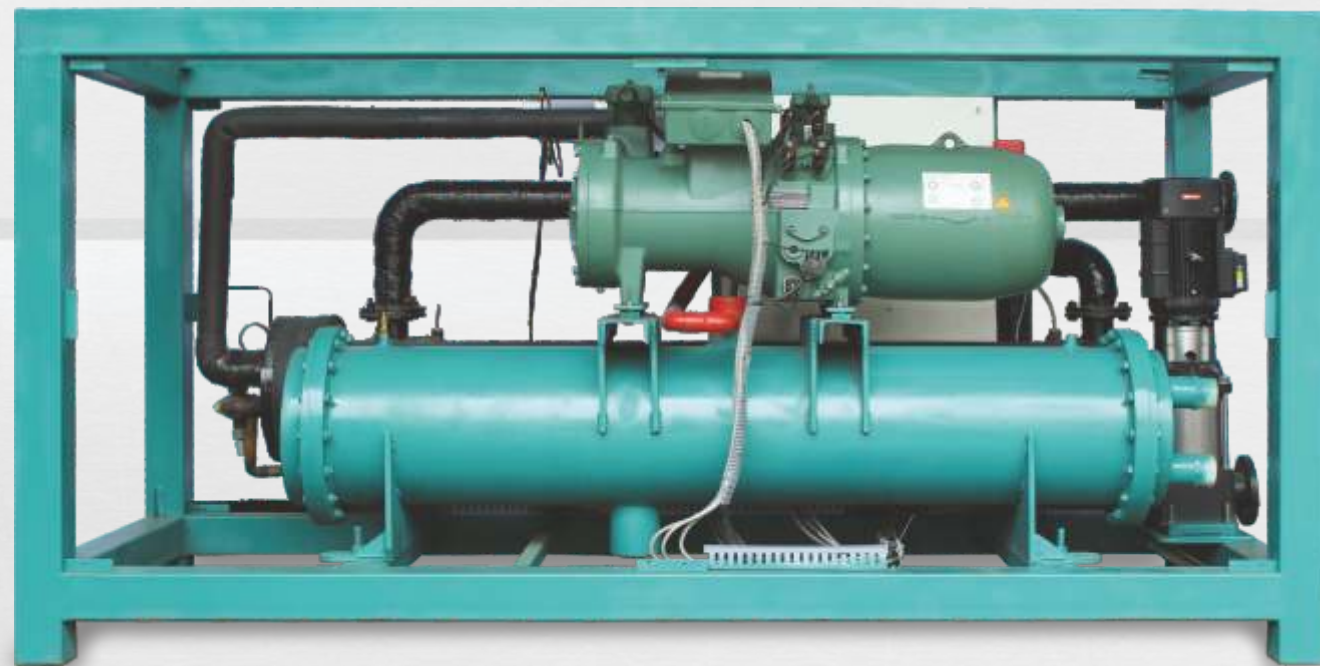
## INDIVIDUAL QUICK FREEZING IQF / COOLING TUNNEL



IQF FREEZER/COOLING TUNNEL are manufactured using latest machines, production techniques and as per international quality norms. Our range of IQF FREEZER/COOLING TUNNEL includes, IQF FREEZER/COOLING TUNNEL For Seafood, Fruit, Vegetable, Biscuits, Chocolates, Vaseline cream, Food, Etc.



## SHELL & TUBE TYPE SCREW CHILLER



Our precision-engineered range of Water, Oil and Gas chillers are provided with modular remote control system and superior quality water pumps. Easy to install, these chillers save electricity cost and hence are largely demanded in the market. 0.5 Tr. to 100 Tr. Water Cooled & Air Cooled Chillers.

## OPEN TYPE CHILLER



Our precision-engineered range of Water, Oil and Gas chillers are provided with modular remote control system and superior quality water pumps. Easy to install, these chillers save electricity cost and hence are largely demanded in the market. 0.5 Tr. to 100 Tr. Water Cooled & Air Cooled Chillers.

## AIR CHILLER - 120 TR



The Air Chiller offers energy efficiency that is superior to other chillers using eco-friendly gas. This is the benefit of Air Chiller innovative technologies.

## HEAT PUMP - 150 - 500 LTR



Ami cooling systems serves Heating/Cooling Dual option in 1 system. We Manufacture Commercial & Domestic Heat Pumps. Ami Cooling Heat Pump Systems deploy a special type of CFC free refrigerant that doesn't negatively affect the earth's ozone layer thus reducing our carbon footprint..

## BIO GAS DRYER



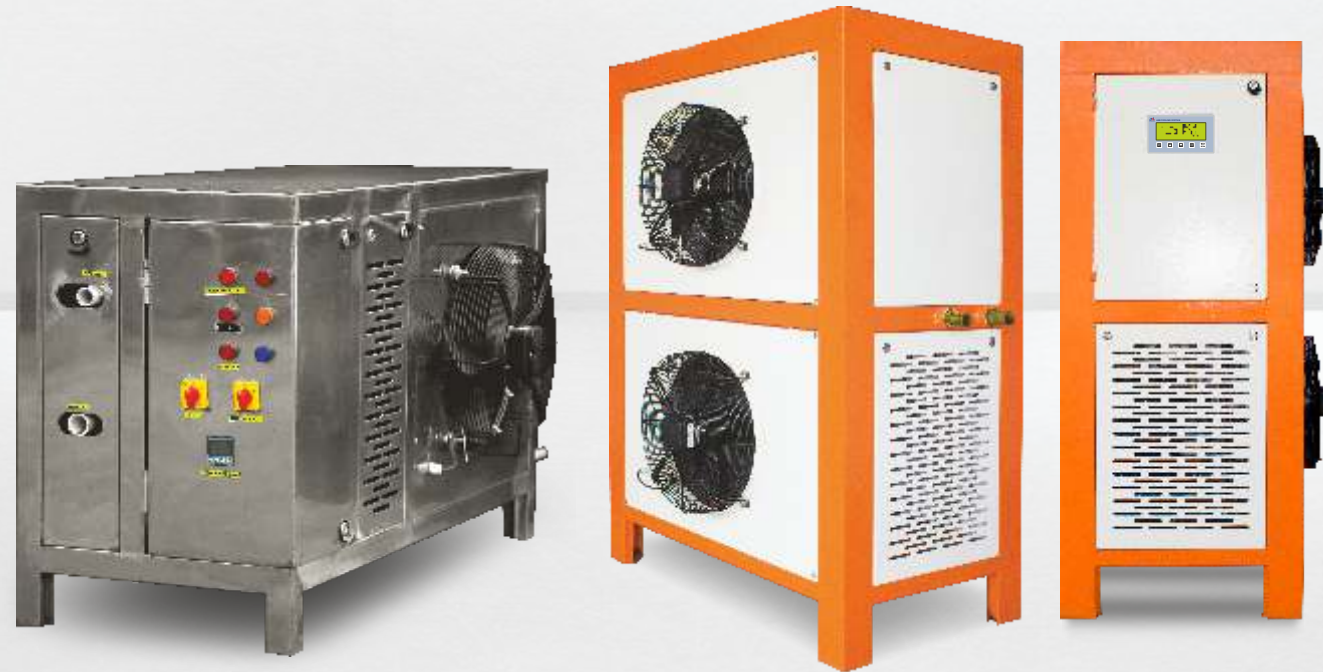
The range of Bio Gas Dryer that we offer is mainly used for Gas engine. It adopts heat-absorbing and cools the Gas and remove moisture from the gas. It also helps to keep the temperature according to usage of gas engine.

## WATER CHILLER 60 TR AIR COOLED



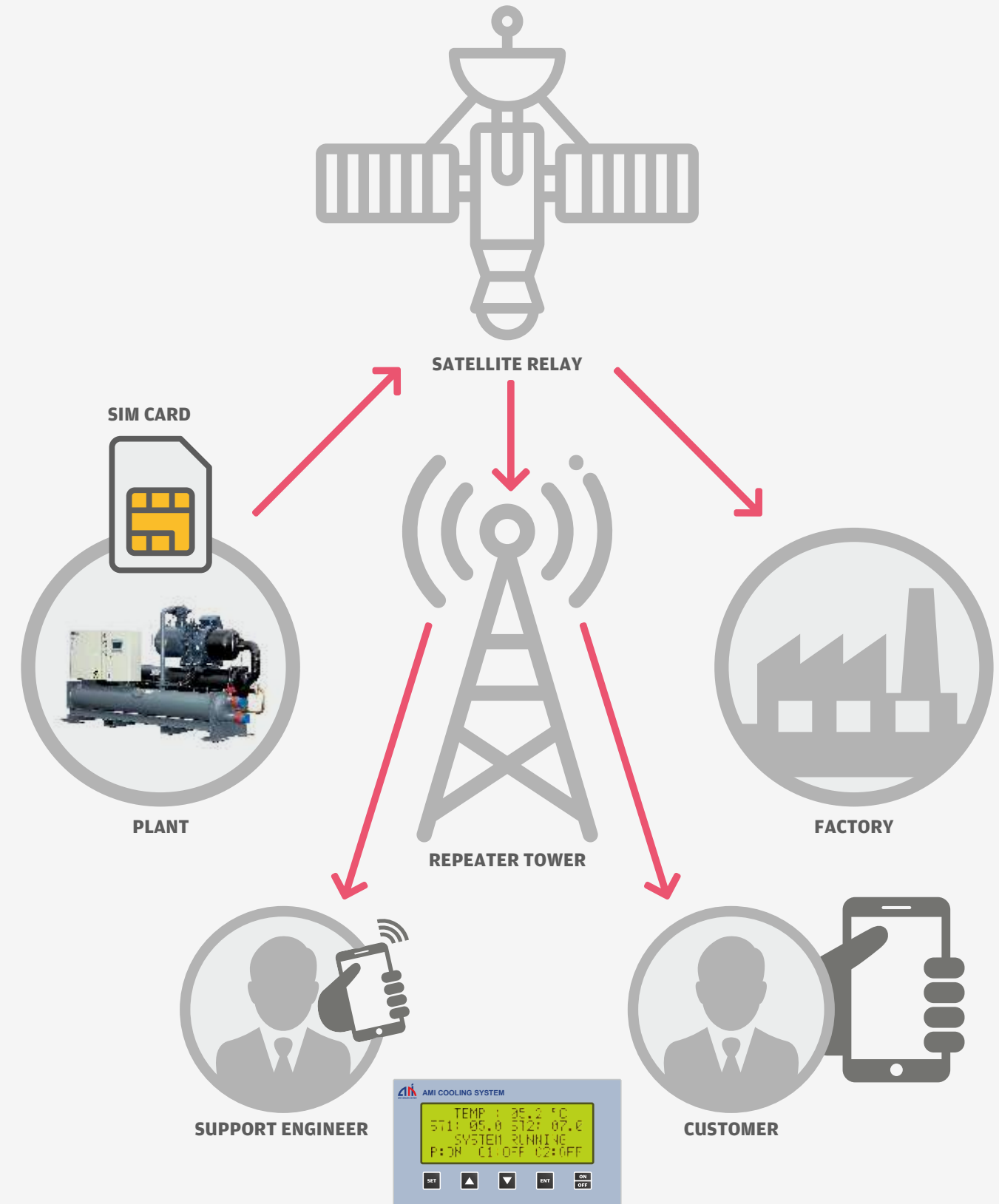
It is the most common type of heat exchanger in Power Plant, Chemical Industry, Textile Industry, Air Condition Industry, Pharma Industry, Food and Beverages, Plastic Industry, Dairy Industry, Laboratory Industry, IT Industry, Printing Industry, Refrigeration Industry. and many more applications. 50 TR to 150 TR

## HEAT PUMP - 1000 TO 20000 LTR.



Ami cooling systems serves Heating/Cooling Dual option in 1 system. We Manufacture Commercial & Domestic Heat Pumps Ami Cooling Heat Pump Systems deploy a special type of CFC free refrigerant that doesn't negatively affect the earth's ozone layer thus reducing our carbon footprint..

## OUR UNIQUE FEATURE



### G.S.M BASE PLC CONTROLLING SYSTEM

- ♦ Easy operating menu in our controlling panel to set temperature, all running systems notification on screen.
- ♦ Auto reminder by text message on given number for any fault in system.
- ♦ Designed by AMI COOLING SYSTEMS
- ♦ Current / Voltage maturement & safety controls
- ♦ Error intimation on Mobile through Text Message (SMS)
- ♦ If Required Static IP Address & software for saving the data (Facility cost is Extra)