



Aspiring for Perfection

Engaged in development of Special
purpose machines and automation

PATSON MACHINES PVT. LTD.



ABOUT US

Patson Machines Pvt Ltd is a leading Designer and Manufacturer of Special Purpose Machines (SPMs) for Automobile , Defence and general engineering industry since last 25 years serving the needs of domestic as well as international clients.

Patson Machines provide solutions in machining segment for mass production of components at an economical rate fulfilling all quality parameters. A sound background of machine tool design with expertise in machine tool manufacturing and Automation gives Patson Machines an advantage. Our solutions give our clients a competitive edge to be economical in todays market with optimum utilisation of resources and ensuring quality of the parts produced.

Over the years Patson Machines have developed SPMs of various designs and operations such as Multi Spindle Drilling / Tapping , Rotary Indexing machines , Fine Boring SPMs , Way type machines, CNC SPMs for 4WH Chassis elements , Facing & Centering SPMs (3 MTR) Micro drilling , Deep hole drilling and many more.

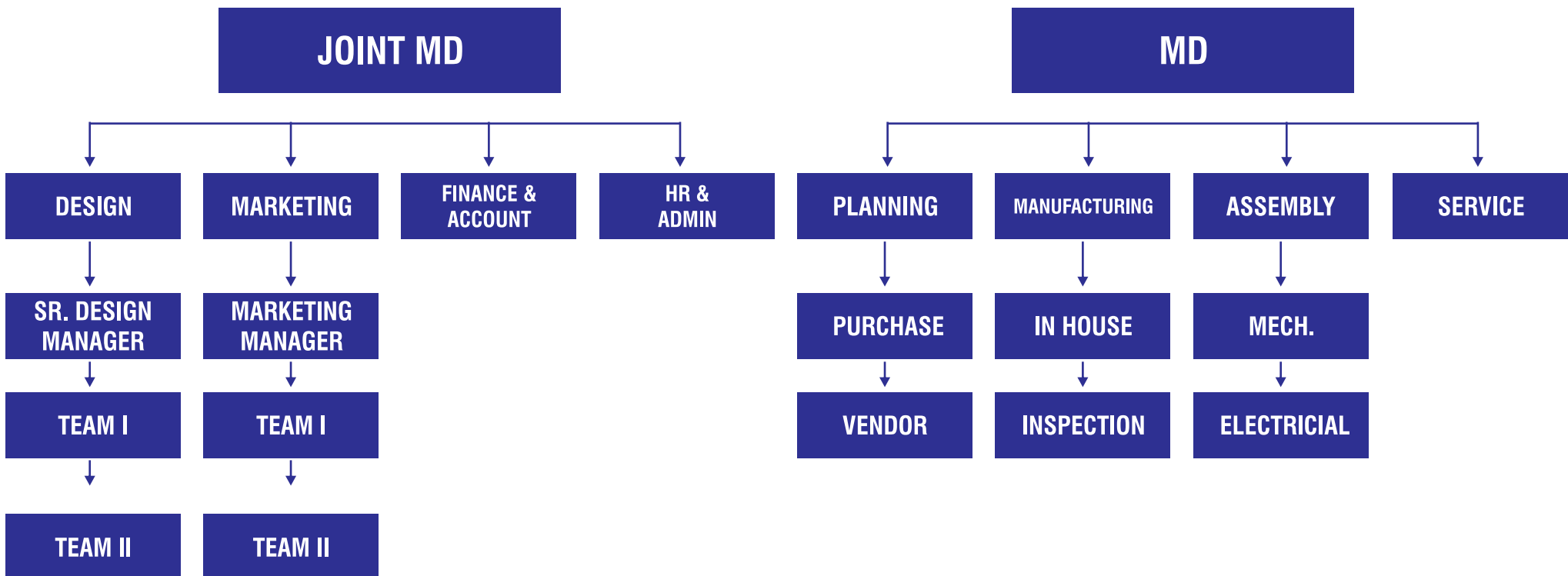
At Patson machines we have well equipped set up and qualified and well experienced team to study and your requirement and provide most suitable solution for machining needs with SPM at an economical price.



Aspiring for Perfection

PATSON MACHINES PVT. LTD.

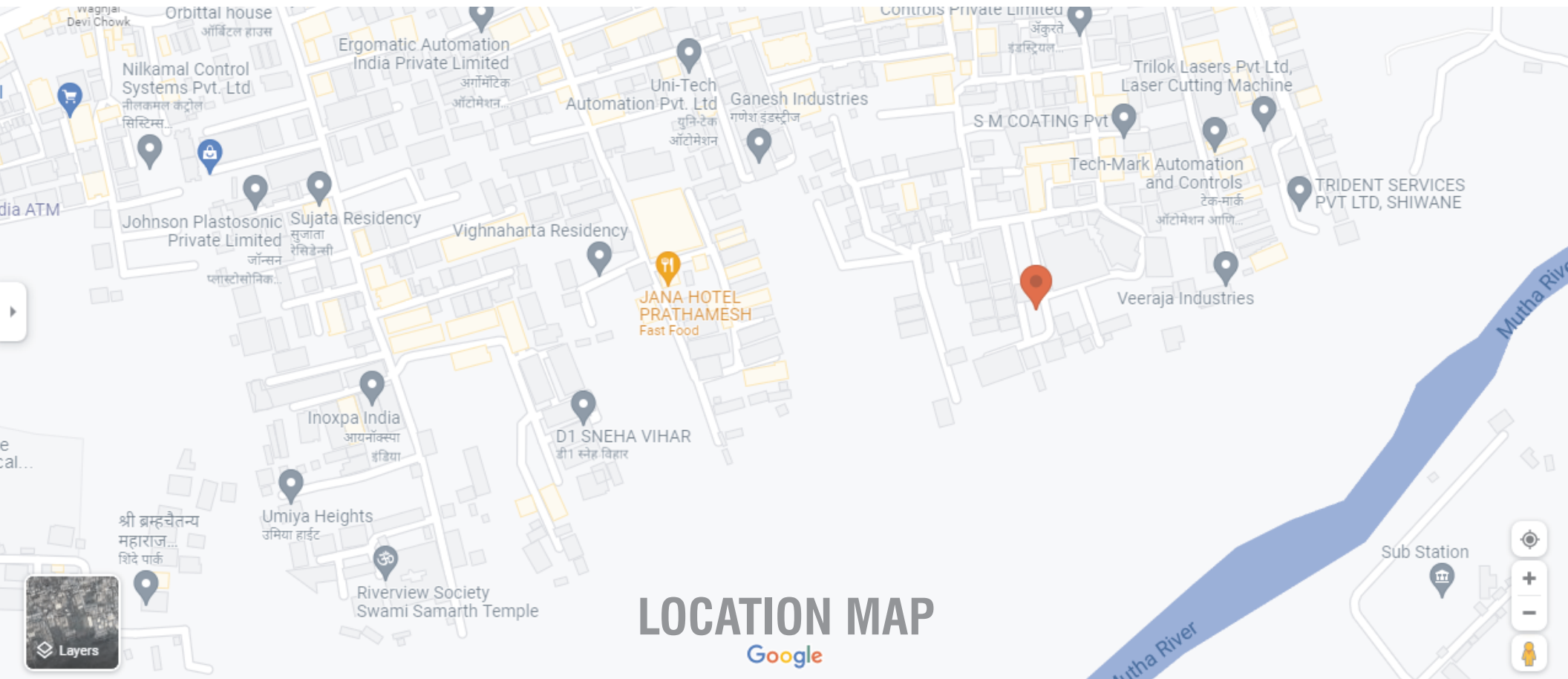
ORGANIZATION CHART





Aspiring for Perfection

PATSON MACHINES PVT. LTD.



MANUFACTURING FACILITIES

MACHINE	MAKE
A) CNC MACHINING CENTRE	MAHO
B) PRECISION TOOL MILLING MACHINE WITH DRO	TOS
C) UNIVERSAL MILLING MACHINE	HMT
D) PRECISION SURFACE GRINDER WITH DIA FORM PROFILE RESSING ATTACHMENT	JUNG GERMANY
E) CENTRE LATHE	-
F) BENCH DRILLING MACHINE	-
G) PEDESTAL GRINDER	-
H) ARM TAPPER	-

DETAILS OF INSTRUMENTS AND EQUIPMENT FOR QUALITY CONTROL

a) SURFACE PLATES	2 NOS.
b) HEIGHT MASTER	1 NO.
c) VERNIER CALIPERS	4 NOS.
d) MICROMETERS	5 NOS.
e) SLIP GAUGE BOX	1 NO.
f) BORE GAUGE	3 NOS.
g) HARDNESS TESTER	1 NO.
h) DEPTH MICROMETER	1 NO.
i) V BLOCKS & STRAIGHT EDGE	-
j) CMM , FARRO INSPECTION & CALIBRATION	OUTSOURCE

TYPES OF MACHINES

- **Multi Spindle Drilling & Tapping machines**
- **Fine Boring SPMs**
- **Milling SPMs**
- **CNC SPMs for 4 WH Chassis components like RTB**
- **CNC Facing, Centering, Drilling & Tapping SPMs (Shaft Dia. 250 mm X Length 3 Mtr)**
- **Precision drilling Tapping Reaming SPMs for Carburetor**
- **Micro drilling SPM**
- **Deep drilling SPMs**
- **Head Turning & Mouth Trilling SPMs for Small Arm Cartridge Cases**
- **Ordnance Factory machines – for various machininig , Filling & Pressing operations.**
- **SPMs for LED Light housing**
- **Standard units like – Slide , Spindles etc**

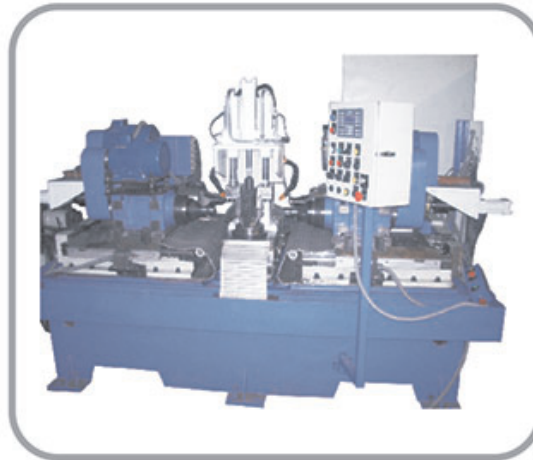
SPMs developed for

- **Auto components manufacturing**
- **4 WH Chassis elements RTB**
- **LED Lighting industry**
- **Lock industry**
- **Defence Industry**
- **Electrical component manufacturing**
- **Valve Industry**
- **General Engineering industry**

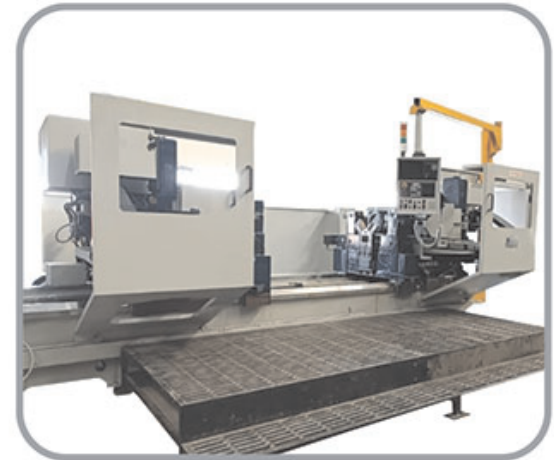
RANGE OF PORDUCTS



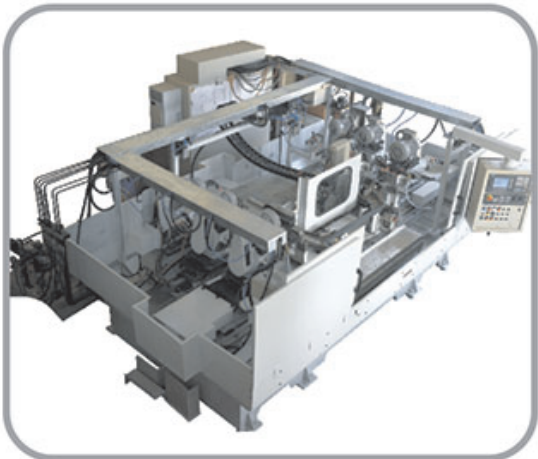
ROTARY INDEXING TYPE SPM



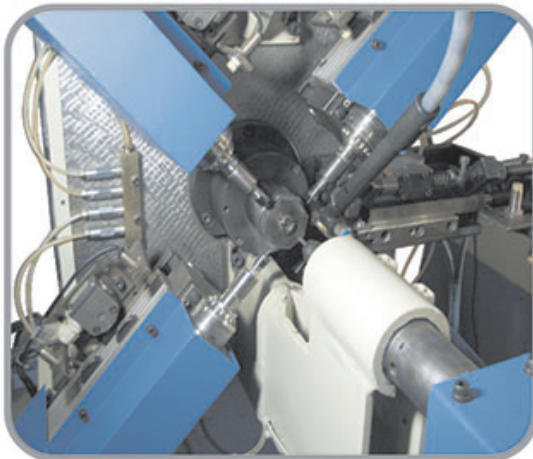
WAY TYPE SPM



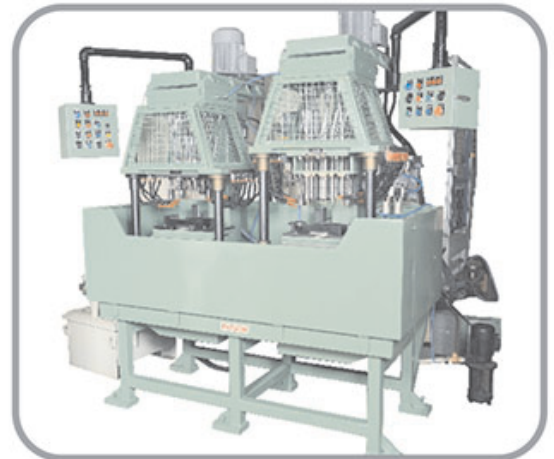
**FACING, CENTERING,
DRILLING & TAPPING SPM**



CNC SPM FOR CHASIS COMPONENT



5 AXIS MICRODRILLING SPM



**ADJUSTABLE MULTISPINDLE DRILLING & TAPPING
MACHINE FOR LED LIGHTING COMPONENTS**

OUR PRESTIGIOUS CUSTOMERS

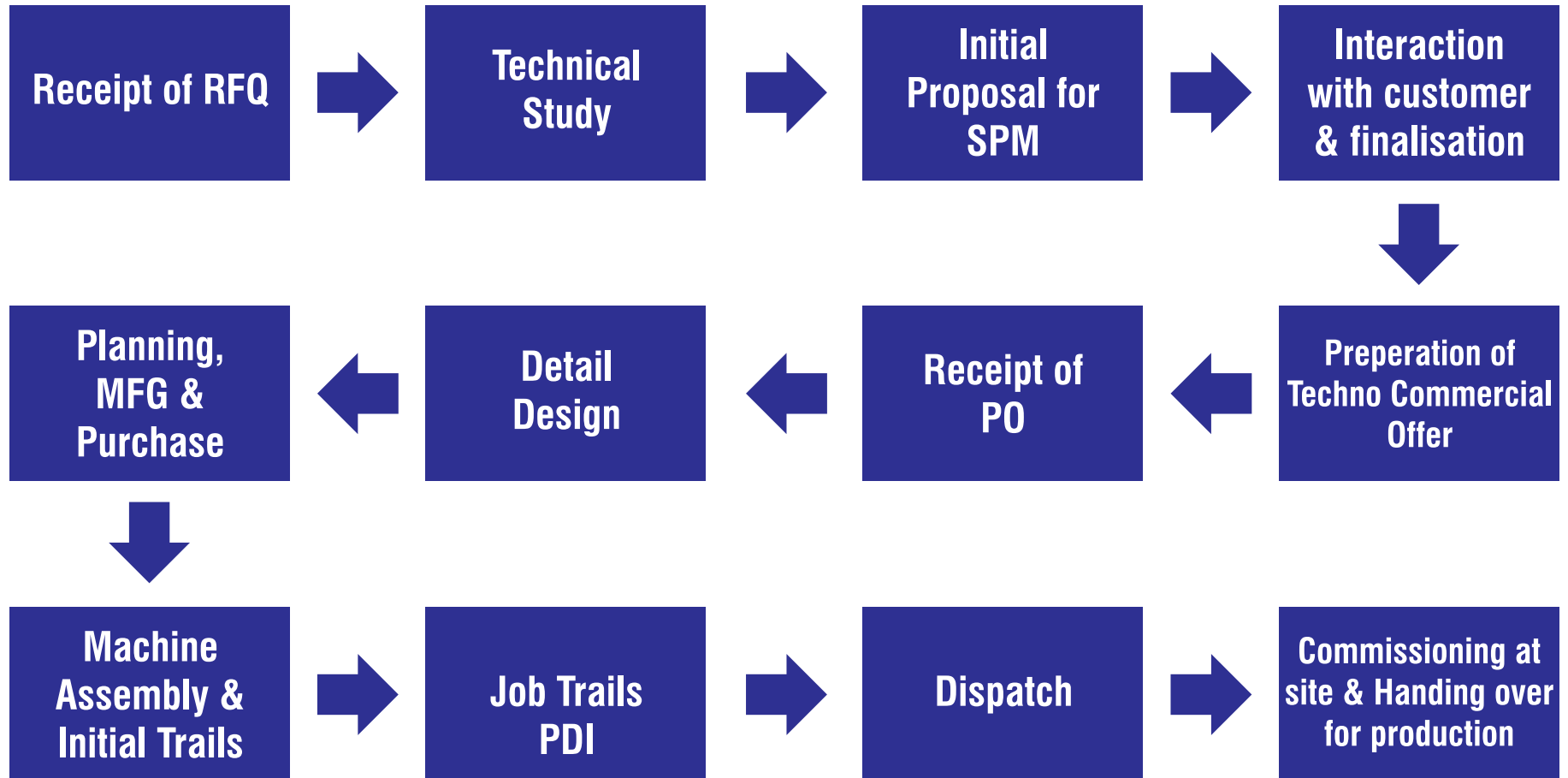
ORDNANCE FACTORY

- ORDNANCE FACTORY, AMBAJHARI, NAGPUR
- AMMUNITION FACTORY, KHADKI, PUNE
- ORDNANCE FACTORY, CHANDA, CHANDRAPUR
- ORDNANCE FACTORY, DEHRADUN
- GSF KASHIPUR
- ARDE PASHAN, PUNE
- RIFLE FACTORY ISHAPORE
- TEAR SMOKE UNIT, BSF. TEKANPUR
- 512 ARMY BASE WORKSHOP. KHADKI, PUNE
- MAGNUM INTEGRATED TECHNOLOGIES INC.. CANADA

FOR PRIVATE SECTOR

- TATA MOTORS LTD., PUNE
- MAHINDRA 2 WHEELERS LTD., PITHAMPUR
- SKF INDIA LTD., PUNE
- GROW EVER STEEL (INDIA) P. LTD. KOLKATA
- LUCAS TVS LTD. PUNE
- COSMA INTERNATIONAL (INDIA) PVT. LTD.,PUNE & CHENNAI PLANT
- IFB INDUSTRIES LTD., BANGALORE
- BALMER LAWRIE VAN LEER MUMBAI
- KHUSHEIM COMPANY INDUSTRIAL EQUIPMENT, SAUDI ARABIA
- SPACO CARBURATOR (I) PVT. LTD., PUNE
- KEIHIN FIE PRIVATE LIMITED, PUNE & BAWAL PLANT
- AUTOMOTIVE STAMPINGS & ASSEMBLIES LTD. PUNE
- B. P. ERGO LTD., NAGPUR
- HIGH TECHNOLOGY TRANSMISSION SYSTEM (I) PVT. LTD. (HTTS) AURANGABAD, PUNE & PANTNAGAR PLANT
- OBLUM ELECTRICAL INDUSTRIES PVT. LTD.,HYDRABAD
- ENDURANCE TECHNOLOGIES PVT. LTD. AURANGABAD
- AMPHENOL INTERCONNECT INDIA P. LTD.,PUNE.
- AARPIKA ENGINEERING PVT. LTD., AURANGABAD
- ALF ENGINEERING PVT. LTD., NASIK & PUNE PLANT
- MUTHA ENGINEERING PVT. LTD.,SATARA
- WELMADE LOCKING SYSTEMS PVT. LTD.,PUNE
- SUDDPRAM AUTO ENGINEERING CO. PVT. LTD. ,PUNE
- NEEL AUTO PVT. LTD., HOSUR, PANTNAGAR & AHMDABAD
- ROCA BATHROOM FITTINGS, BIWADI
- VANAZ ENGINEERS LTD., PUNE
- ALICON CASTALLOY LTD.,PUNE
- JADHAO GEARS PVT. LTD., AMARAVATI
- SOM AUTOTECH PVT. LTD., AURANGABAD
- AHURA MAZDA MFG. CO. PVT. LTD., VALSAD, GUJRAT
- EVERGREEN ENGG. CO. PVT. LTD., AHMADNAGAR
- RAPICUT CARBIDES LTD., ANKALESHWAR , GUJRAT
- GODREJ , MUMBAI

PROJECT PROCESS CYCLE





Aspiring for Perfection

PATSON MACHINES PVT. LTD.

Office:

SNEH, C11, ERANDWANE SOCIETY,14/5,
ERANDWANE PUNE 411004

Tel. 020 25410836

patsontech@gmail.com

sales.patson@gmail.com

Works:

M/S PATSON MACHINES PVT. LTD.,
S. No. 78/2 , Near Chaudhari Veet Bhatti,
Shivane Industrial Area, Off NDA road,
Village Shivane, Pune - 411023, Mah., India