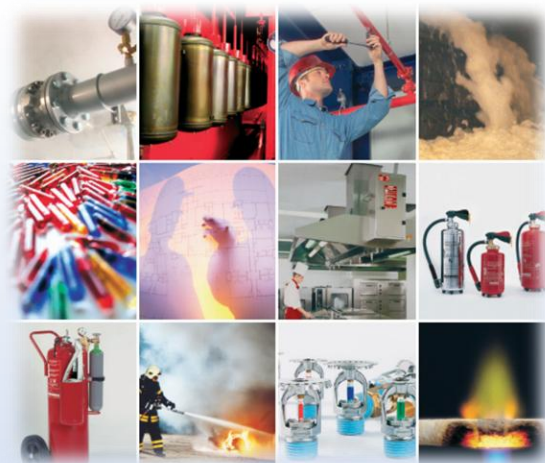


Fire Protection solutions:

Fire detection systems
Fire detection and extinguishing control panels
Water extinguishing systems
Gas extinguishing systems
Powder extinguishing systems
(Minimax)



Right angle boots (11kV) & conductor

Sleeves up to 66kV:

Type tested proven design
Voltage level: up to 220kV
Suitable for both indoor & outdoor applications
Shrouds for various applications



Chemical Earthing Solutions:

- UL certified solutions
- NABL approved chemical solutions
- Maintaining adequate resistance for effective earthing
- Supply includes copper bonded rod, pit cover & chemical



Cable Lugs & glands:

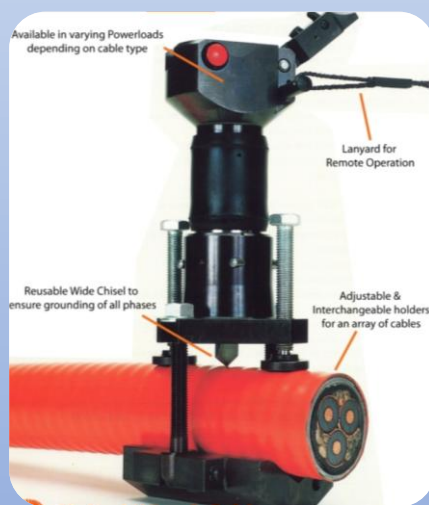
- Size up to 1000 sq mm
- Available in both copper and Aluminium
- Bimetallic lugs: Friction welded lugs and connectors
- Large variety of lugs: Insulated and pre insulated, brazed, copper tubular T or X connectors
- Glands: Single compression, double compression ,flame proof



Cable Spiker Tool:

Human safety:

- Operated from a distance of 7 meter
- In case of energized cable also, tool will operate and trigger the upstream protection device to trip
- With use of appropriate PPE kit the operator is safe
- Safety catch button for intentional firing set up of tool
- Supports in cutting the cable:
- Reusable: With the proper handling, storage , maintenance and spares
- it can be used for a long time



Chemical Sprays

- Electrical contact cleaner: online
- Degreasing
- Anti tracking spray
- Dielectric enhancement sprays
- Battery terminal protector spray
- PCB insulation
- Other applications



Panel & control room solutions

- HT Panels upto 33kV
- LV panels: Rittal type tested
- Control relay panels
- Marshalling cabinets
- Control desks
- Large Video Screens
- Kiosks
- Signages
- LILR
- Universal test benches



Power monitoring solution (Remote communication) :

Power management and optimization:

- Manage consumption
- Monitor power quality
- Monitor electrical events.

Simplified Maintenance

- Remote monitoring

Most appropriate solution for new and existing installations:

- Space saving with compact design
- Flexible architecture
- Local/ remote monitoring
- Multiple options in communications

