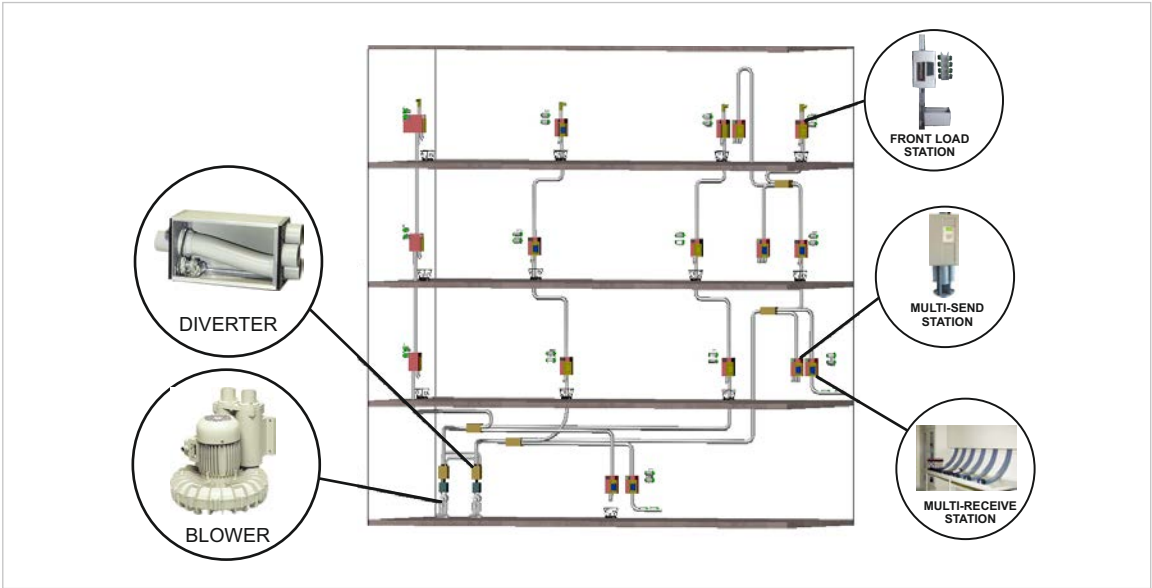




PNEUMATIC TUBE SYSTEM





PNEUMATIC TUBE SOLUTIONS

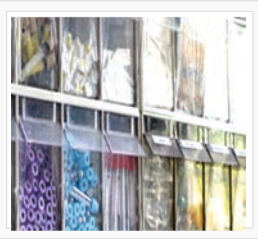
Greenvac Solutions is the technology leader for high-quality pneumatic tube systems for the healthcare service, retail, industry and administration.

With our decades of experience, we have the necessary in-depth expertise that makes us a leading innovator. We at Greenvac Solutions develop and manufacture our own plant components and provide mature control and software engineering, and are thus able to provide tailor-made, comprehensive solutions complete with consultancy, training and after-sales service.

SMART PTS



RECESSED STATION



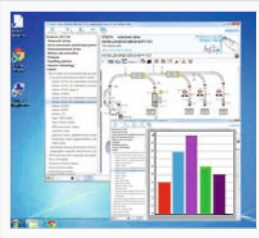
PHARMACY



USER ID



LAB RECEIVING STATION



MONITORING

SAFE AND SEALED

Safe and sealed transportation which also gives maximum leakage safety, protects the paramedic staff from cross contamination within the different areas of hospitals.

SECURE

Effective, secure and impactless transportation through variable speeds by VFD

ECONOMIC

Pneumatic tube transport provides various tangible and intangible economy benefits over the period of time.

AUTO UNLOAD SYSTEM

A FURTHER ENHANCEMENT IN PNEUMATIC TUBE SYSTEM IS THE AUTO UNLOAD SYSTEM WHICH IS USED FOR THE LAB WHEREIN INSTEAD OF THE CARRIERS ONLY THE SAMPLES DROP OUT OF THE LAB STATION

- Carriers unload samples automatically within the station.
- No manual handling
- Spread of infection is reduced drastically
- No bottlenecks and peak time in the lab
- Space saving
- Empty carriers are sent back automatically
- More flexibility
- Carriers are available to other users all the time.
- No blocking of carriers at the lab



LAB AUTOMATION



AUTO UNLOADING



AUTO UNLOAD CARRIER WITH SAMPLE CONTAINER



BLOOD TRANSFUSION BAG



TIME SAVING

Materials can be transported over long distances in a few seconds drastically reducing transportation time.

HIGHER EFFICIENCY

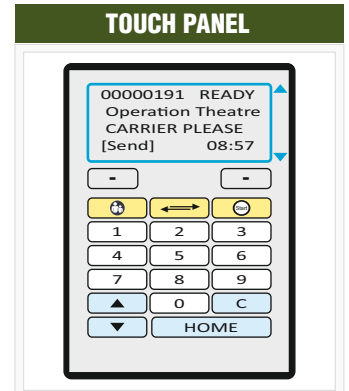
Users are able to focus on the core task rather than transportation | Peak lab period and bottlenecks are eradicated | Efficient and speedy analysis.

OPTIMAL FACILITY UTILIZATION

Facilities can be optimally utilized by having centralized lab and pharmacies and reducing man power and repetition of equipment and staffs.

TRANSPORT OF SAMPLES IN COMPLIANCE WITH EU DIRECTIVE 2002/98/EG

PERFORMANCE OPTIMIZATION



OUR ADVANTAGES

Efficient transportation in a timely manner | Reduction in errors | User friendly and easy to operate | Continuous process for the lab | Generation of data which may be used by the administration effectively | Integration with HIMS | Faster sample processing and generation of reports | Use of RFID technology.



APPLICATIONS

PTS CAN BE USED FOR THE VARIOUS INDUSTRIES

- Hospitals
- Laboratories
- Banks & Supermarkets (Cash)
- Offices (Documentation)
- Industries (Document, hot samples of upto 600°C)
- Hotels & Restaurants, etc.

TREND SETTING THROUGH R&D

Greenvac strongly believes in development of advanced solutions to improve the antiquated pneumatic tube system with the new features for higher efficiency and a better overall experience for the facilities and the users.



Narula's Tower-II, Top Floor, Building No. 3, Central Market,
Punjabi Bagh West, New Delhi-110 026 (INDIA)

Phone : +91-93195 98475

E-mail : info@greenvacolutions.com

Website : www.greenvacolutions.com

Data & Specification given are approximate and for guidance only.
Due to continued R&D we reserve the right to change them without prior notice.

Narula's are proud to be members of

