



**Waste Management  
Solutions for a  
Better Environment**

**PNEUMATIC WASTE & LAUNDRY COLLECTION SYSTEM**

**PWLCS**



## ABOUT US

**Greenvac** provides leading pneumatic technologies and smart design engineering that increases a facility's efficiency and improves cleanliness and aesthetics. It brings a powerful continuum of solutions, technology, innovation and execution.

**Greenvac** (along with its technology partners) works with facility owners, Developers, Architects, Consultants, Governments or stake holders to create a SMART, Green, Healthy & Clean environment through efficient collection, Transportation & Treatment of waste & laundry.

An experience of many years in pneumatic automation in various extensive and diverse backgrounds, **Greenvac** and its technology partners have perfected the development, installation and maintenance of state-of-the-art pneumatic solutions.

**Greenvac**, is a unit of UNG which has been catering to many sectors since 1953.

## HOW IT WORK

**Greenvac PWLCS** is a totally sealed automated system for collection of solid waste and / or Laundry throughout facilities maximizing performance, efficiency and reliability while delivering exceptional convenience and value. Every system provides simple access and ease of use while minimizing exposure of solid waste and dirty Laundry to users of the facility and the environment around.

### New, Upgrade or Retrofit

**Greenvac PWLCS** can be incorporated into new or existing building design.

Whether a single building, a multi building facility or a city center, our engineers design and install a system tailored and customized as per the facility.

Retrofitting into existing buildings or up-gradation of existing gravity chute systems is also possible

## ■ Size Of Pipes

- 90 MM
- 110 MM
- 160 MM
- 200 MM
- 300 MM
- 400 MM
- 500 MM
- 600 MM

# Benefits

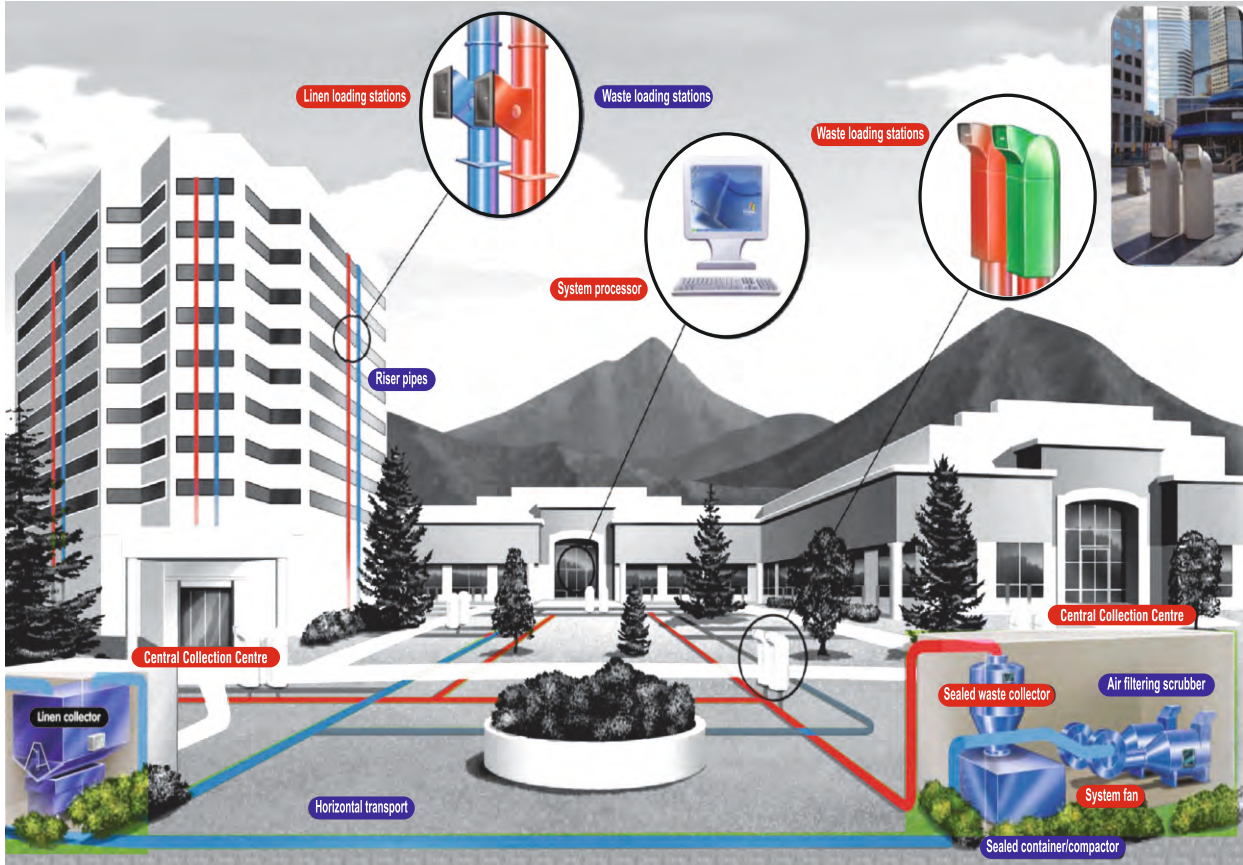
- SMART Utility.
- SMART City Concept.
- Less Visible Trash/Laundry - Minimizes human contact.
- Less staff required for collection & segregation.
- No Odor.
- No rodents or insects.
- Less traffic of trucks in the facility.
- Reduced carbon footprint.
- Green solution.
- Sealed automated solution for transportation.
- No air pollution.
- Eliminates cross contamination.
- Development space saving.
- Vehicle expense including fuel, maintenance and purchasing the vehicles themselves is reduced drastically.
- Improves aesthetics.
- No over flow of waste around dustbins.
- Reduced visual impact of containers and having waste in public thoroughfares.
- Only one collection point for entire facility.
- Adhartaal to Swachh Bharat Mission.

### Cost Savings

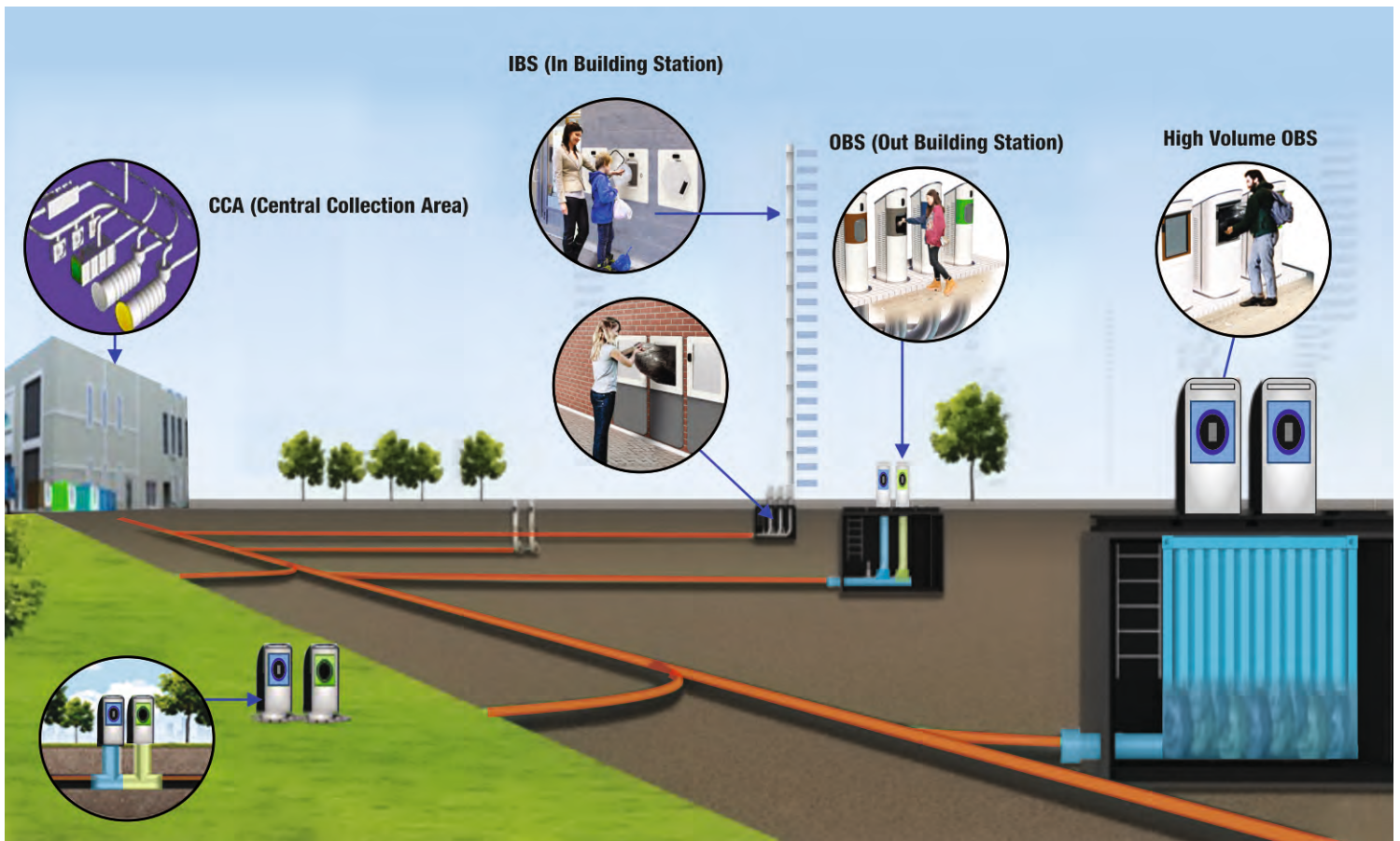
- Lowers overall collection expense
- Reduces housekeeping labor costs
- Reduces workplace injuries
- Reduces building wear and tear
- Frees up valuable real estate.

## ■ Pneumatic Tube System - Applications

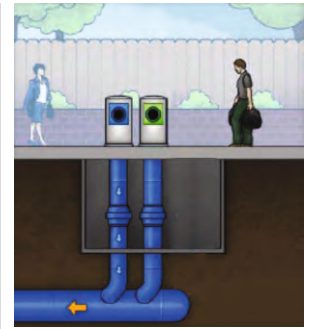
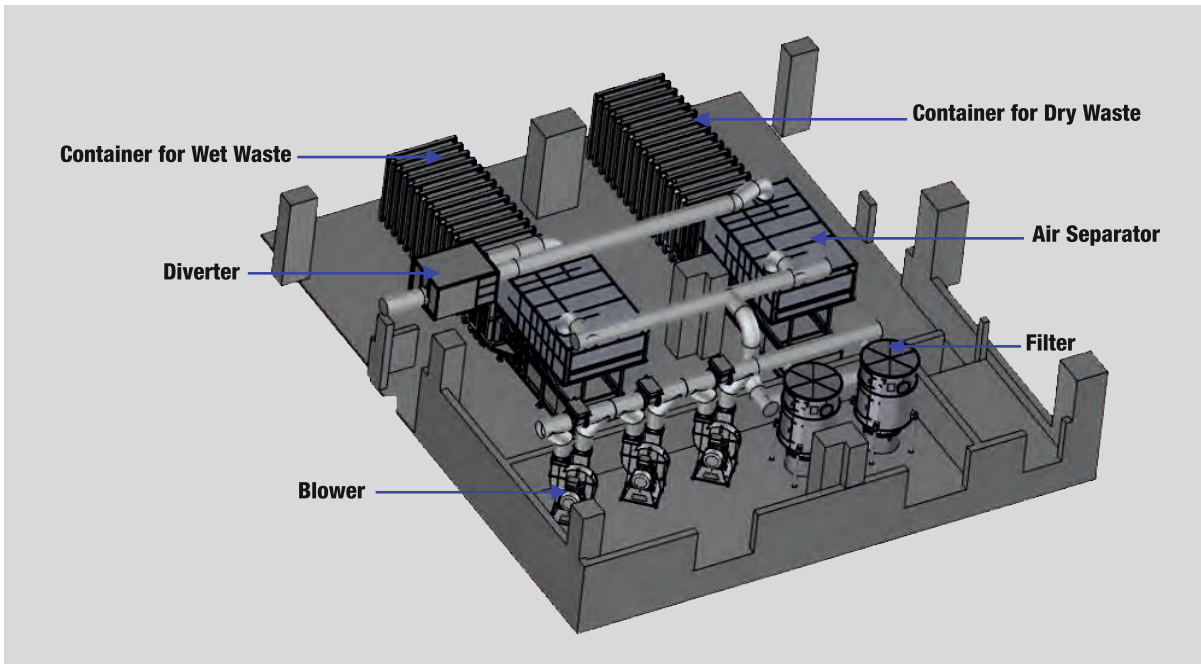
Cash System	Waste	Laundry	Hot Samples (upto 600°C)	Medicines, blood samples, Reports etc.	Documents	Jewellery
Banks	Hotels/Restaurants	Hospital	Industries	Hospitals	Hotels/Restaurants	Mines
Malls	Hospitals	Hotels		Labrotaries	Hospitals	Factory
Toll plaza	Airports	Seminars		Research Centres	Airports	Office
Hospitals	Commercial Complex	Apartment			Commercial Complex	
Super markets	Exhibition grounds				Exhibition grounds	
Hotels	Multi storey buildings				Multi storey buildings	
	Railway stations				Railway stations	
	Parks				Malls	
	Malls				Mines	
	Cities					



**Greenvac PWLCS** a network of pipe transports the solid waste or laundry at 60-100 km/hr through Pneumatic pressure to a central collection area from inside the building or outside.



## SEGREGATION OF WASTE



### How Does Segregation Work?

1. Type of waste can be selected before disposing off from each loading station.
2. The system (software) knows which type of waste is being disposed
3. Once the waste reaches the central collection area, that particular type of waste is diverted into the collector for that particular type of waste.

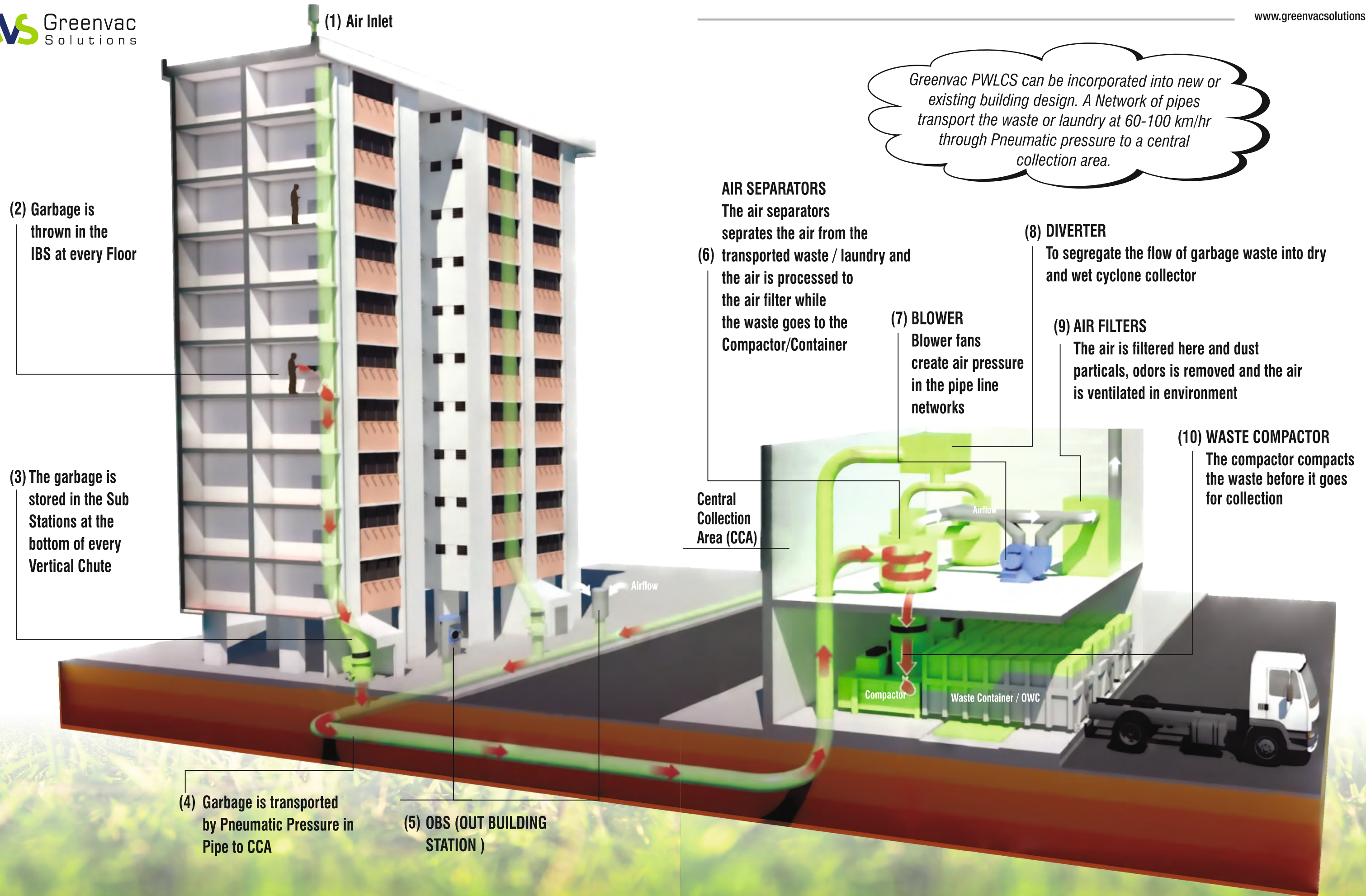
## GREENVAC PNEUMATIC WASTE COLLECTION SYSTEM AT HIGH SECURITY OR SENSITIVE AREAS LIKE AN AIRPORT

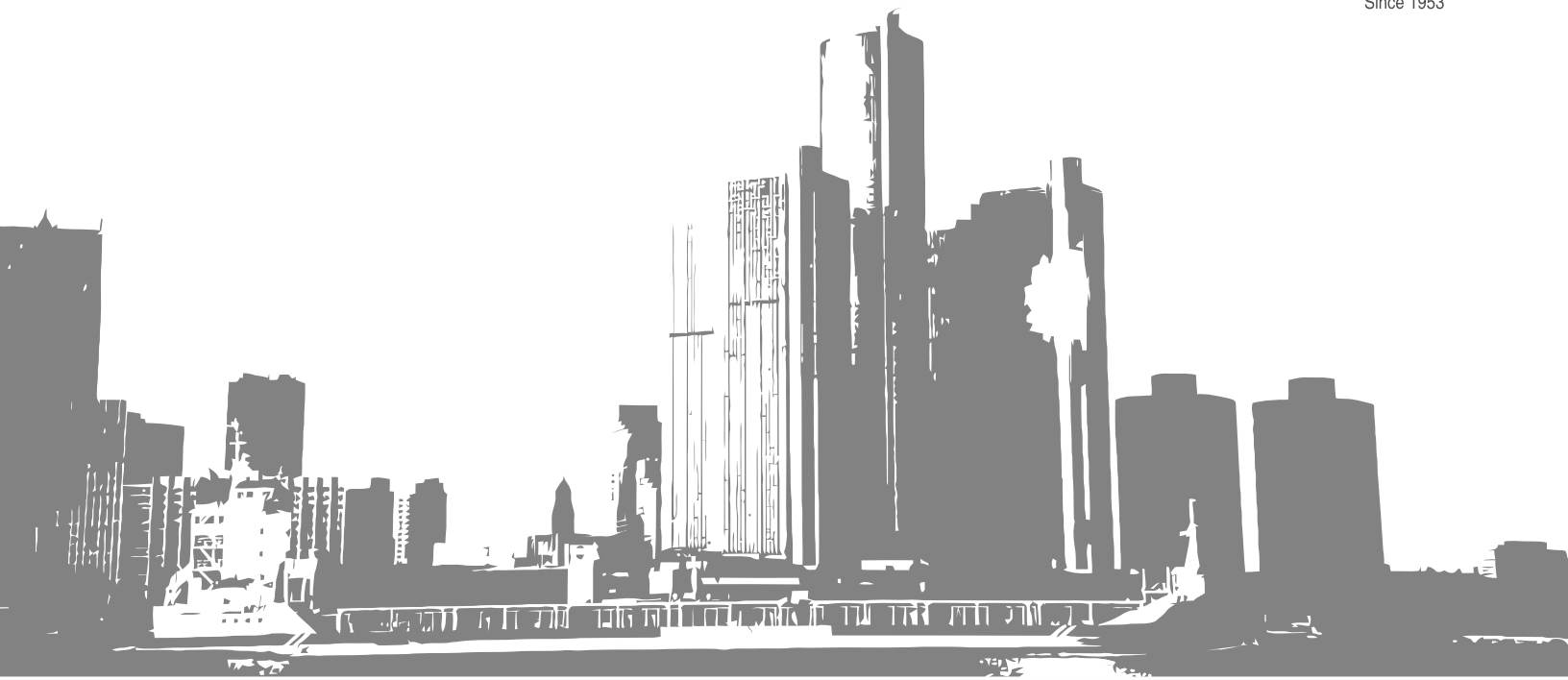
### Key advantages of the system over conventional system:

- Security is not compromised.
- No need for personnel to enter restricted area.
- No need of waste trucks within the restricted area of the facility.
- Emphasis on aesthetics.
- Hygiene is maintained.
- Facility are kept cleaner.
- No rodents, insects, flies due to waste.
- Green and SMART concept.
- Increased management tools via secure log-ins for system access.
- Detailed management, reporting, and control over the working, etc.



*Greenvac PWLCS can be incorporated into new or existing building design. A Network of pipes transport the waste or laundry at 60-100 km/hr through Pneumatic pressure to a central collection area.*






**Greenvac**  
Solutions Pvt. Ltd.

Narula's Tower-II,  
Top Floor, Building No. 3,  
Central Market, Punjabi Bagh West,  
New Delhi-110 026 (INDIA)

Phone : +91-93195 98475  
E-mail : info@greenvacolutions.com  
Website : www.greenvacolutions.com

## A Better Future Can Start Today

For a cleaner, healthier environment inside and outside your buildings, learn more about the **Greenvac** state-of-the-art Pneumatic Waste & Linen Collection System.

## Narula Exports

**Government Recognized Star Export House**  
(An ISO 9001:2015 / ISO 13485:2016 Certified Company)

Website: [www.narulaexports.com](http://www.narulaexports.com)



*Narula's are proud to be members of*



All the Images, Illustrations and Information is for reference only. Due continuous R&D we reserve the right to change them without notice.