

GUARD RAIL



"METAL CRASH BARRIER" (Guard Rail) is probably something most of the people don't think about, that is, until it saves their lives. It is a proven road safety system, and is brought to you by OM Wire & Wire Products Industries which undertakes design, manufacturing and installation of wide range of Guard Rails under stringent quality control.

The basic function of Guard Rails is to absorb the impact energy of the colliding vehicle thus minimizing the extent of risk and damage to the vehicle and its passengers. Besides, it prevents the vehicle from rolling down the high embankments and veering off the carriage way. Thus, Guard rails find its typical applications on Highways, Bridges and Flyovers.

Based on the guidelines issued by Ministry of Surface Transport (MOST) and other international specifications like AASHTO M 180, OM Wire & Wire Products Industries offers "W" beam and "Thrie" beam type steel crash barrier systems.

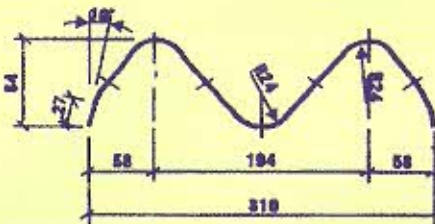
TECHNICAL SPECIFICATIONS

- Cold Roll formed
- Raw material : ST 42/IS 5986 Fe 410/510 Grade steel
- Available in different lengths and thickness to match customer requirements
- Hot Dip Galvanized (550 GSM minimum)



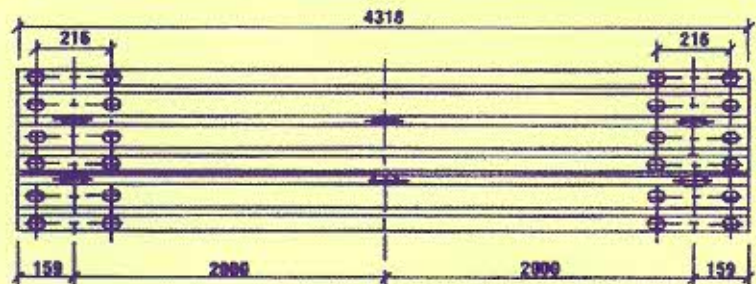
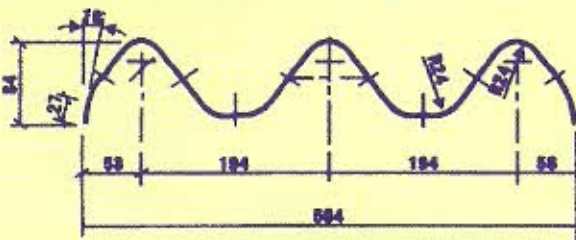
'W' beam Technical Data

Thickness	Effective Length	Overall Length	Section Area (cm ²)	Moment of Inertia		Section Modulus	
				I-xx (cm ⁴)	I-yy (cm ⁴)	Z-xx (cm ³)	Z-yy (cm ³)
3.00 mm	4000 mm	4318 mm	14.35	1328.8	106.15	88.8	24.57



'THRIE' beam Technical Data

Thickness	Effective Length	Overall Length	Section Area (cm ²)	Moment of Inertia		Section Modulus	
				I-xx (cm ⁴)	I-yy (cm ⁴)	Z-xx (cm ³)	Z-yy (cm ³)
3.00 mm	4000 mm	4318 mm	23.43	5640.3	170.75	223.82	40.08

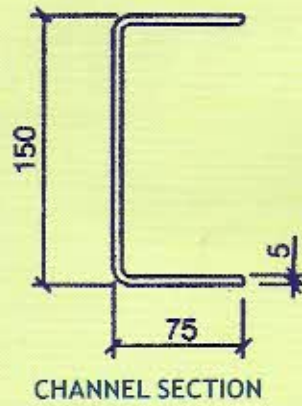


OM Wire & Wire Products Industries

26/1/1B, Strand Road, 4th Floor, Room No. 6, Kolkata - 700001
 Ph. : 033-2230 6008, 22311481, 22311838 • Fax : 033-22312076
 Email : omwireproducts@gmail.com, sales@omwireproducts.com
 Website : www.omwireproducts.com, www.omwireproducts.co.in

Post/Spacer

- Cold Roll formed 'C' channel
- Size: 150 x 75 mm and 5 mm thick
Available in customised lengths
- Raw Material :
ST 42/IS 5986Fe410 grade steel
- Hot DipGalvanize
(550 GSM – minimum)
- Post Spacing : 1.5 to 2.0 Mtr. C/e

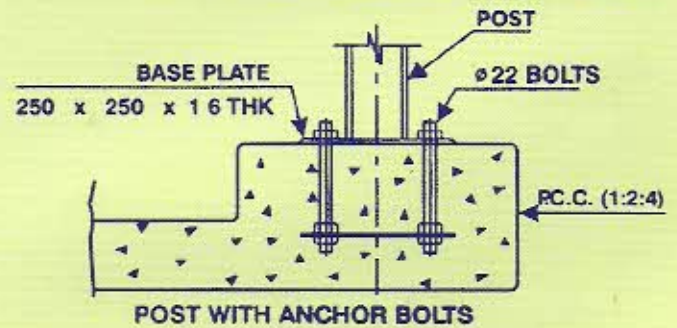
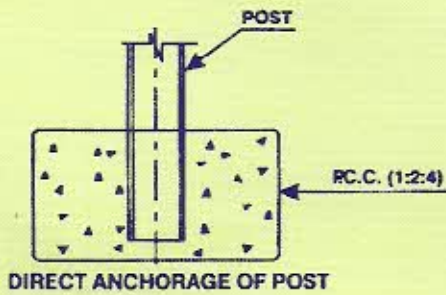


Technical Data

Section	Moment of Inertia				
	Area (cm ²)	I-XX (cm ⁴)	I-yy (cm ⁴)	Z-xx (cm ³)	Z-yy (cm ³)
	13.98	480.78	77.69	64.10	14.47

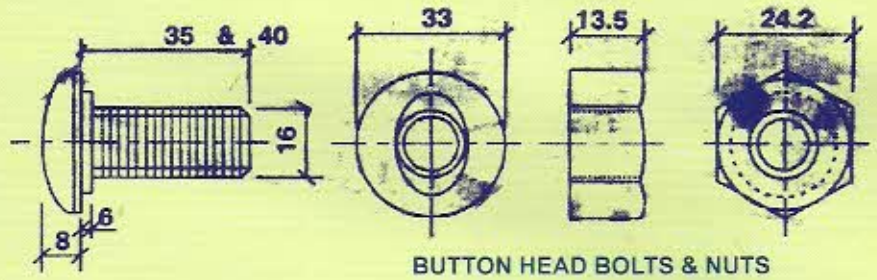


TYPICAL FOUNDATION

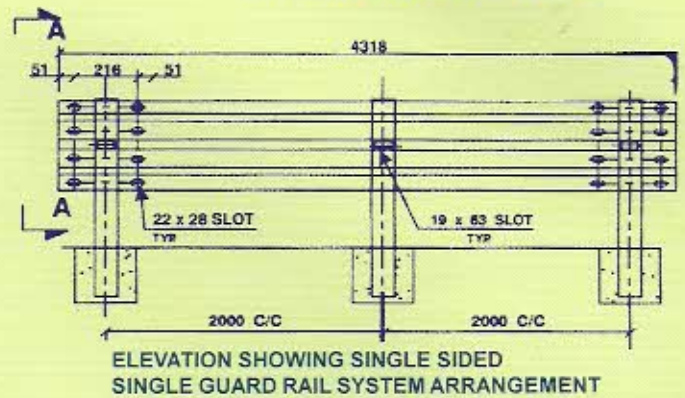
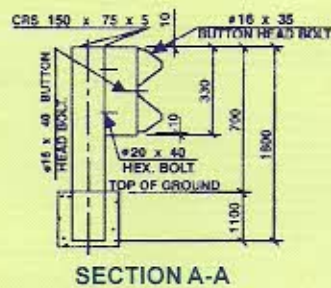


FASTNERS

- 16 mm Dia Button Head Bolts for splice joints and for connecting 'W' – 'THRIE' beam to spacer.
- 20 mm Dia Hexagonal Head Bolts for connecting spacer and post
- Hot dip/Electro Galvanized – Grade 4.6/8.8



GENERAL ARRANGEMENT



END TREATMENT

