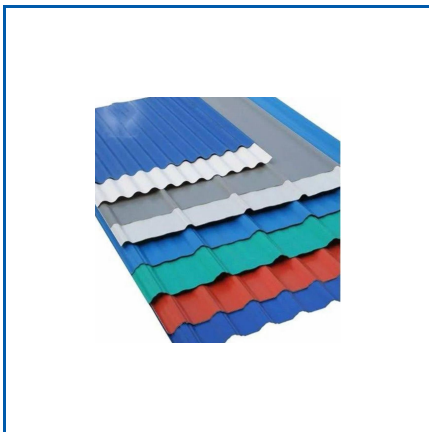




**Metal Pipes**  
*Customer's Faith Well-Kept For Lifetime*

3 mm Thickness GI Plain Sheet, Aluminium Roofing Sheet, Aluminium Zinc Roofing Sheet, Barricading Sheets PPGL, Bhushan Color Roofing Sheet, Blue Color Mild Steel Boundary Wall, Borewell Casing Pipe, C Purlin, Centering Sheets., Cladding Sheet, Color Coated Cladding, Color Coated GI Roofing Sheet, Crimping Roofing Sheets, Decking Sheet, ERW Black Steel Pipe, etc.



**CLADDING SHEET**



**POLYCARBONATE PROFILE SHEET**



**JSW STEEL COLOR ROOFING SHEET**



## About Us

Malur Tubes Pvt. Ltd., specializes in providing roofing sheets and products under the brand name Akash Roofing and MS tubes and pipes under the brand name MTPL. Our incorporation dates back to the year 2002 when we first began our manufacturing operations from Bengaluru, India. Providing Color Coated GI Roofing Sheet, Chequered Plate, GI Plain Sheet, Metal Purlin, Borewell Casing Pipe, ERW Black Steel Pipe, MS Square Pipe and more products under one roof, we have become a manufacturer, trader and retailer to rely upon.

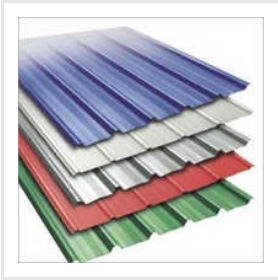
It is not merely the diversity in our product range which is appreciated by customers but our work approach and transparent business practices have also gained us a wide clientele. We keep our policies and deals clear so that clients can be rest assured that they are dealing with a credible business entity. From understanding their exact requirements to providing them with the finest solutions at great prices, we put in all efforts to make sure they are content, always.



## Key Facts

|                                       |                             |
|---------------------------------------|-----------------------------|
| <b>Nature of Business</b>             | Manufacturer                |
| <b>Primary Competitive Advantages</b> | ms erw pipes,roofing sheets |
| <b>No of Staff</b>                    | 50                          |
| <b>Year of Establishment</b>          | 2002                        |
| <b>No of Production Lines</b>         | 1                           |
| <b>OEM Service Provided</b>           | No                          |
| <b>Monthly Production Capacity</b>    | 1000 MT                     |
| <b>Memberships</b>                    | ISO 9001:2015               |
| <b>ProductRange</b>                   | ms erw pipes,roofing sheets |

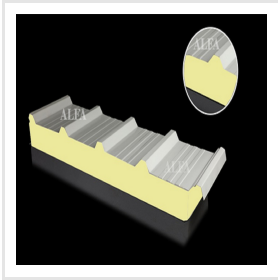
**Our Products**



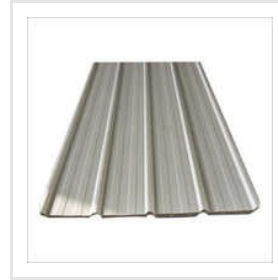
**Color Coated GI Roofing Sheet**



**Bhushan Color Roofing Sheet**



**PUF Panels**



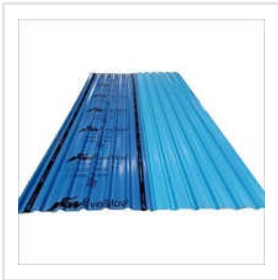
**PPGI Off White Profile Sheet**



**MS ERW Black Steel Pipe**



**Aluminium Zinc Roofing Sheet**



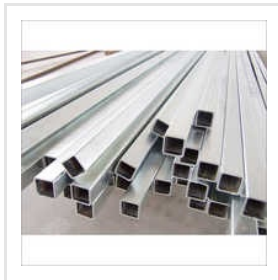
**JSW Galvanized Roofing Sheet**



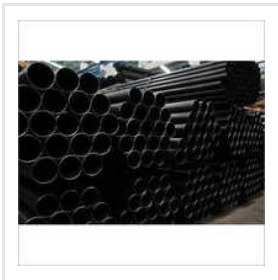
**Aluminium Roofing Sheet**



**JSW Color Coated Profile Roofing Sheet**



**GI Square Pipe**



**MS Borewell Black Steel Pipe**



**Galvanized Roofing Sheet**



**Tata Color Coated Roofing Sheet**



**ERW Black Steel Pipe**



**JSW Color Coated Roofing Sheet**



**Rectangular Hollow Section Pipe**



ADDRESS

No. 57, KIADB Industrial Area,  
Malur, Kolar District, Bengaluru,  
Karnataka, India (563130).



EMAIL

nalingupta\_1975@yahoo.co.in



MOBILE

+919900525121



WEBSITE

[www.malurtubes.co.in](http://www.malurtubes.co.in)

KEY PERSONNEL  
**Nalin Gupta**  
(DIRECTOR)