

Solid Top Manhole Covers, Sewer Cover, Drainage Cover, Telecom Cover, Earth Pit Cover, Recessed Cover, Iron Gratings, Channel Gratings, Square Gratings, Catch Basin, Tree Gratings, Hydrant Cover, Kerb Gullies

**MEGACITY KAJ** Roof Drain



Roof Drain product grid showing various sizes and types of roof drains.

**MEGACITY KAJ** Ductile Iron Manhole Cover



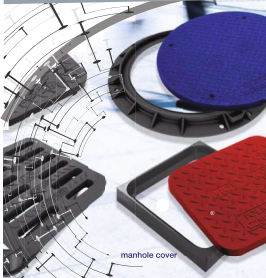
**MEGACITY KAJ** Cast Iron Manhole Cover



**MEGACITY KAJ** Aluminium Manhole Cover



**MEGACITY KAJ** FRP Manhole Cover



**MEGACITY KAJ** Catch Basin Inlet



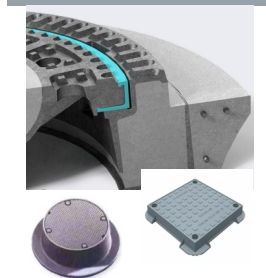
**MEGACITY KAJ** Surface Box



**MEGACITY KAJ** Stainless Steel



**MEGACITY KAJ** Water tight Air tight



**MEGACITY KAJ** Steel Gratings



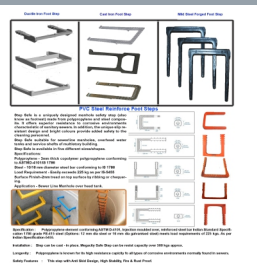
**MEGACITY KAJ** Hinged Solid Top Manhole Cover



**MEGACITY KAJ** Channel Grating



**MEGACITY KAJ** FOOT STEP





**MEGACITY**  
www.megacityiron.com

**KAJ**

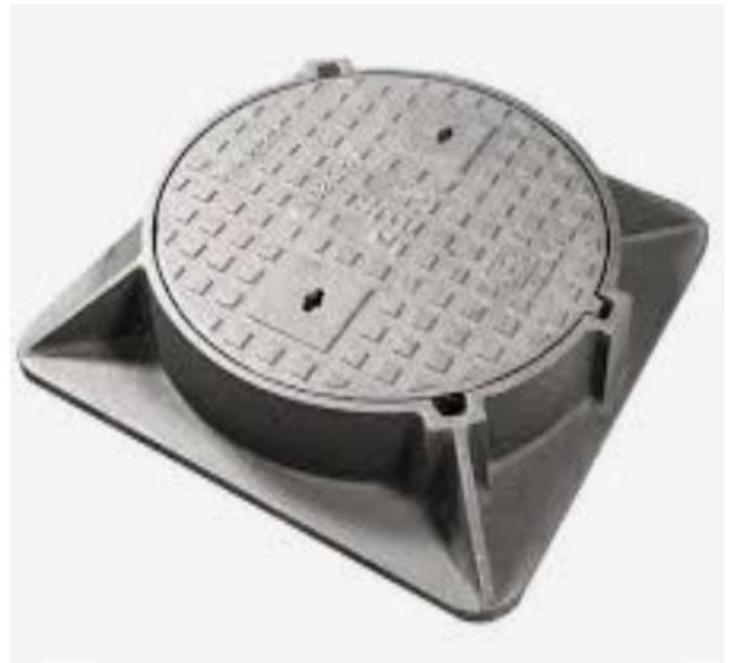
www.kajbuildingmaterial.com

# Ductile Iron Manhole Cover





# Cast Iron Manhole Cover





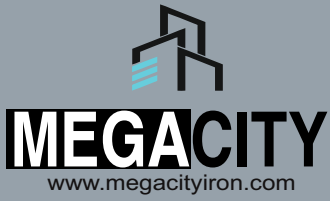
**MEGACITY**  
www.megacityiron.com

**KAJ**

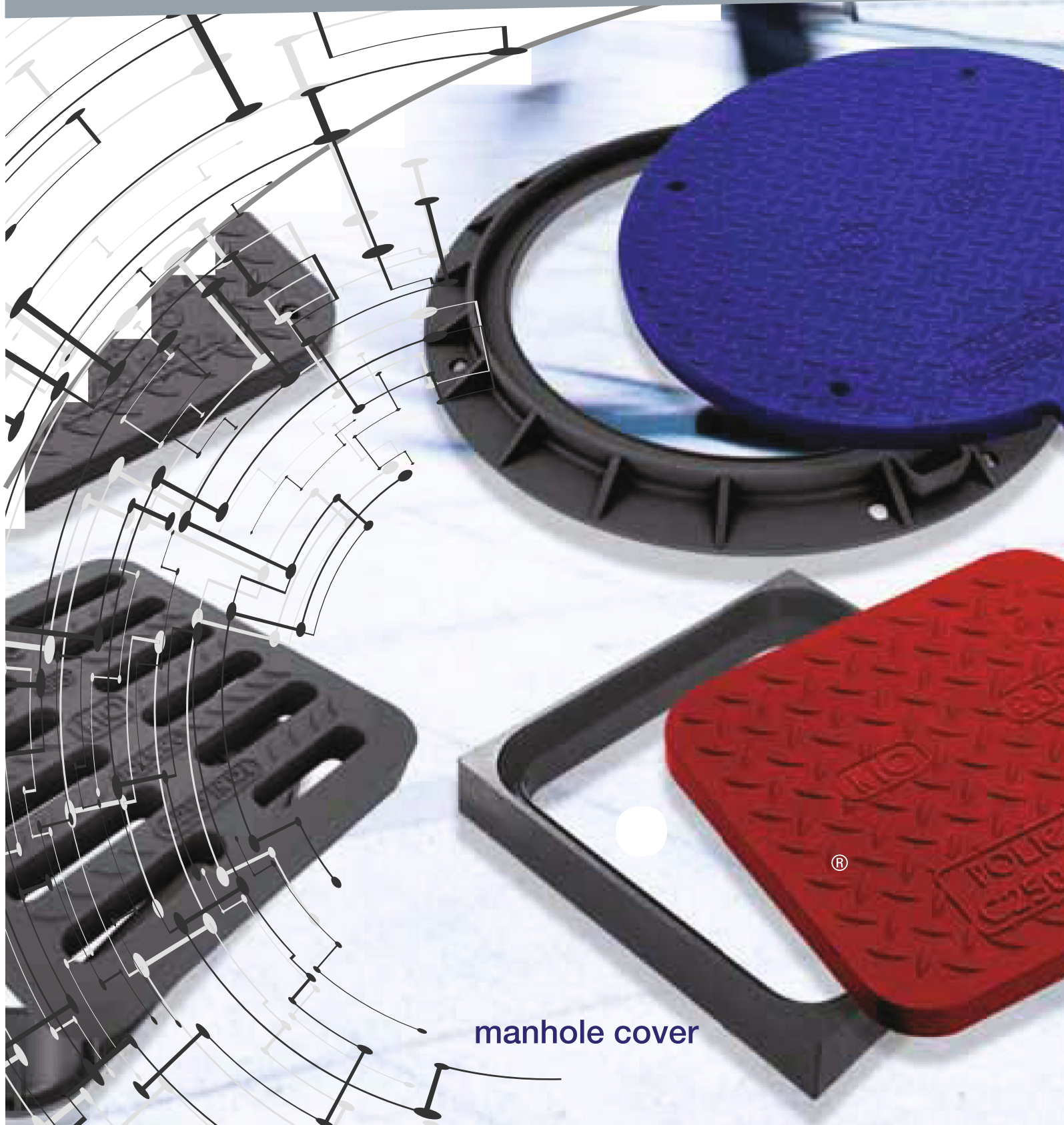
www.kajbuildingmaterial.com

# Aluminium Manhole Cover





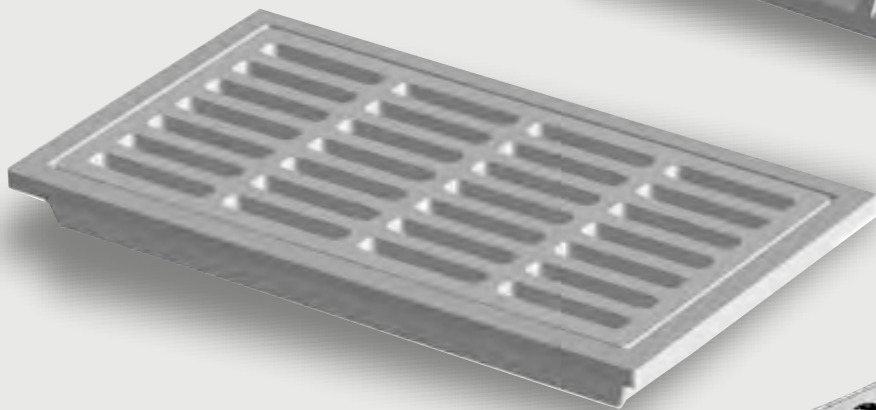
# FRP Manhole Cover



manhole cover



# Catch Basin Inlet

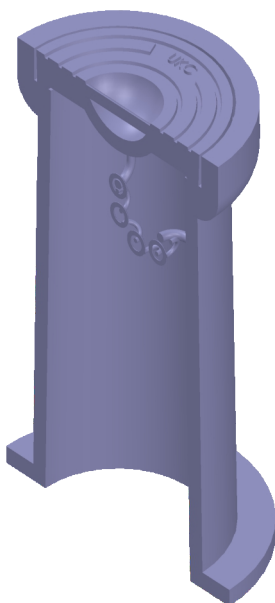




**MEGACITY**  
www.megacityiron.com

**KAJ**  
www.kajbuildingmaterial.com

# Surface Box





**MEGACITY**  
www.megacityiron.com

**KAJ**  
www.kajbuildingmaterial.com

# Stainless Steel Floor Drain

**MEGACITY**

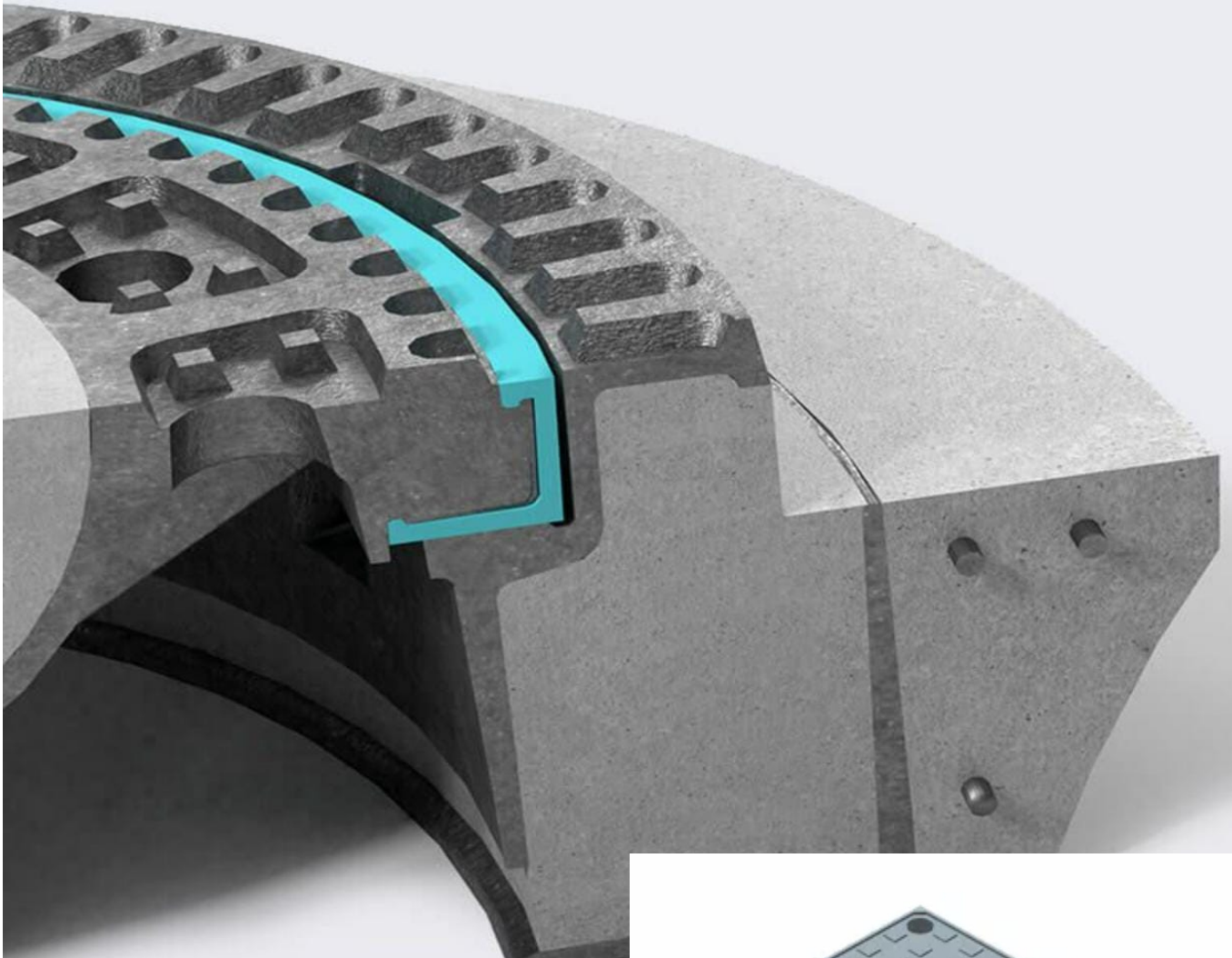


**SS FLOOR DRAIN**



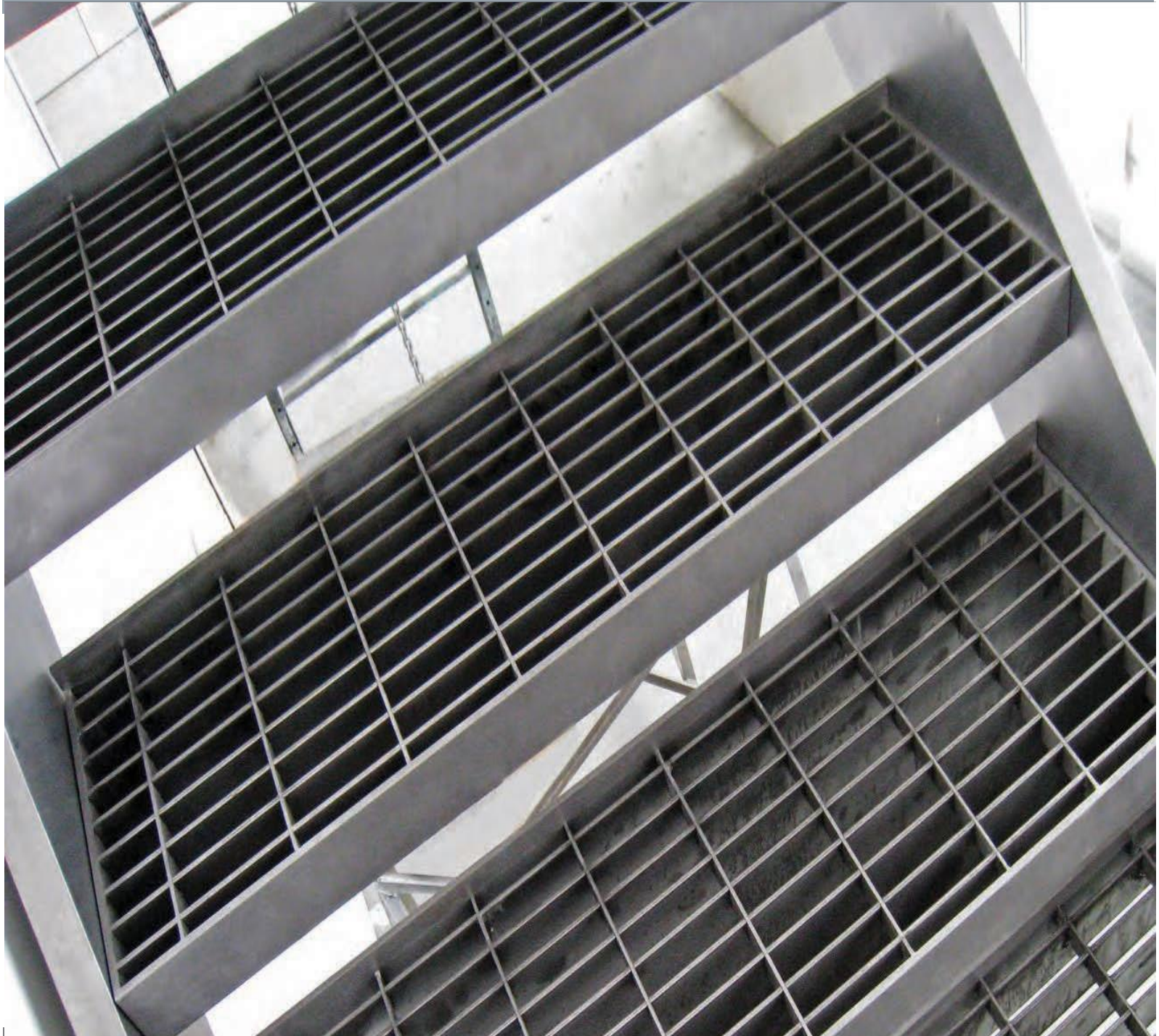


# Water tight Air tight Manhole Cover





# Steel Gratings



Product Details & Distribution

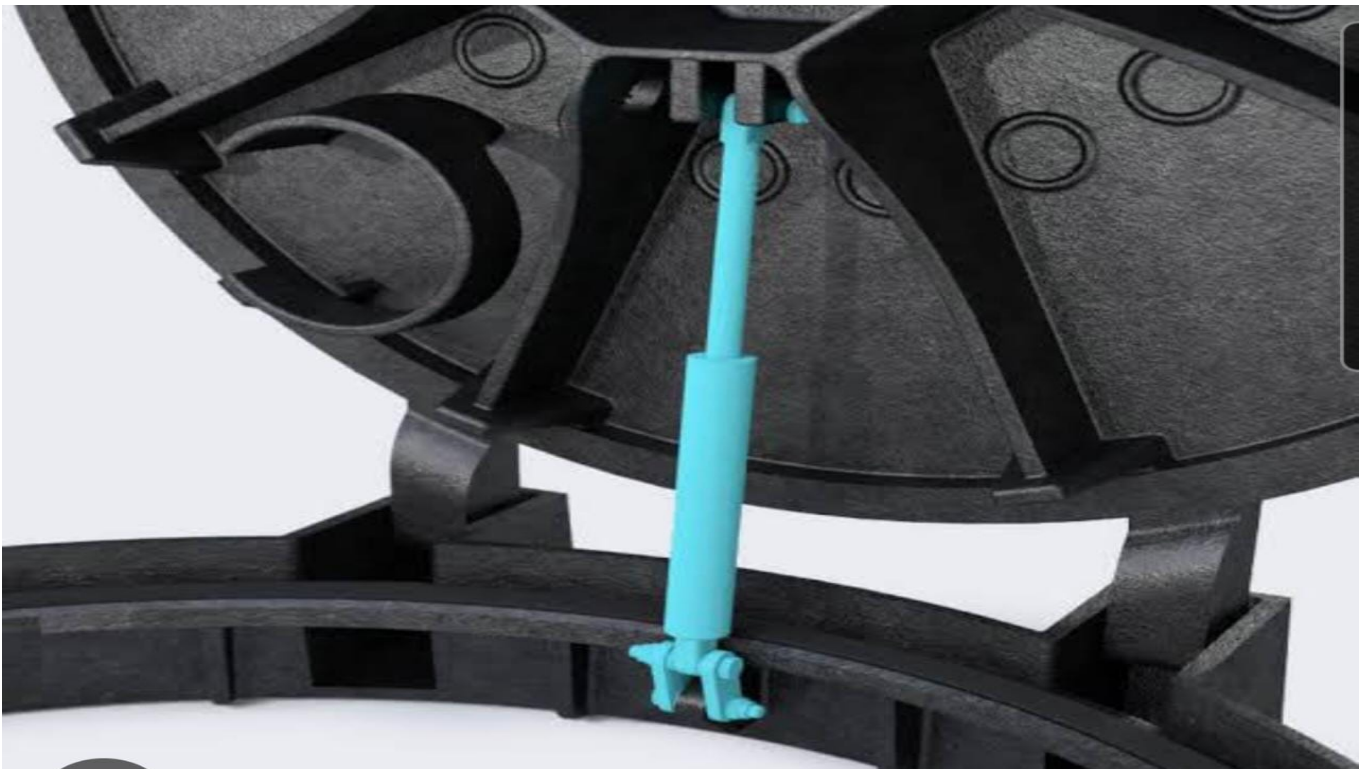


**MEGACITY**  
www.megacityiron.com

**KAJ**

www.kajbuildingmaterial.com

# Hinged Solid Top Manhole Cover





**MEGACITY**  
www.megacityiron.com

**KAJ**  
www.kajbuildingmaterial.com

# Channel Grating



# Roof Drain

## Scupper / Parapet Type



## Small Sump Type

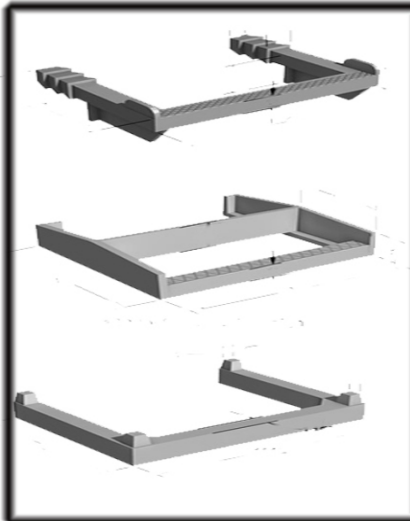


## Large Sump Type



# FOOT STEP

Ductile Iron Foot Step



Cast Iron Foot Step



Mild Steel Forged Foot Step



## PVC Steel Reinforce Foot Steps

Step Safe is a uniquely designed manhole safety step (also known as footrest) made from polypropylene and steel composite. It offers superior resistance to corrosive environments characteristic of sanitary sewers. In addition, the unique slip-resistant design and bright colours provide added safety to the cleaning personnel.

Step Safe suitable for sewerline manholes, overhead water tanks and service shafts of multistory building.

Step Safe is available in five different sizes/shapes.

Specifications:

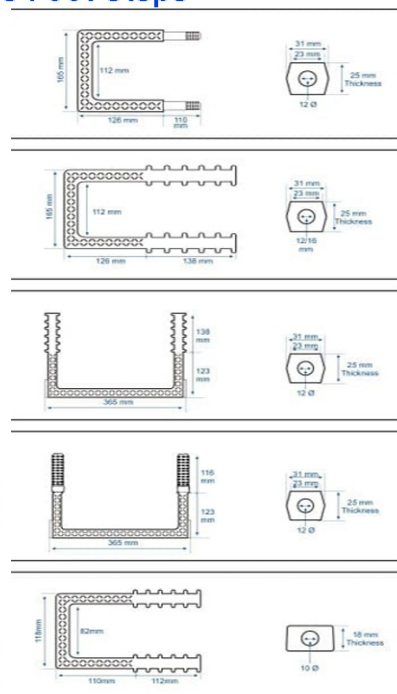
Polypropylene - 3mm thick copolymer polypropylene conforming to ASTM D-4101/IS 1786

Steel - 10/16 mm diameter steel bar conforming to IS 1786

Load Requirement - Easily exceeds 225 kg as per IS-5455

Surface Finish-2mm tread on top surface by ribbing or chequering.

Application - Sewer Line Manhole over head tank.



Specification : Polypropylene element conforming ASTM D-4101, Injection moulded over, reinforced steel bar Indian Standard Specification 1786 grade FE-415 steel (Options: 12 mm dia steel or 16 mm dia galvanised steel) meets load requirements of 225 kgs. As per Indian Specification-5455.

Installation : Step can be cast - in place. Megacity Safe Step can resist capacity over 500 kgs approx.

Longevity : Polypropylene is known for its high resistance capacity for all types of corrosive environments normally found in sewers.

Safety Features : This step with Anti Skid Design, High Stability, Fire & Rust Proof.