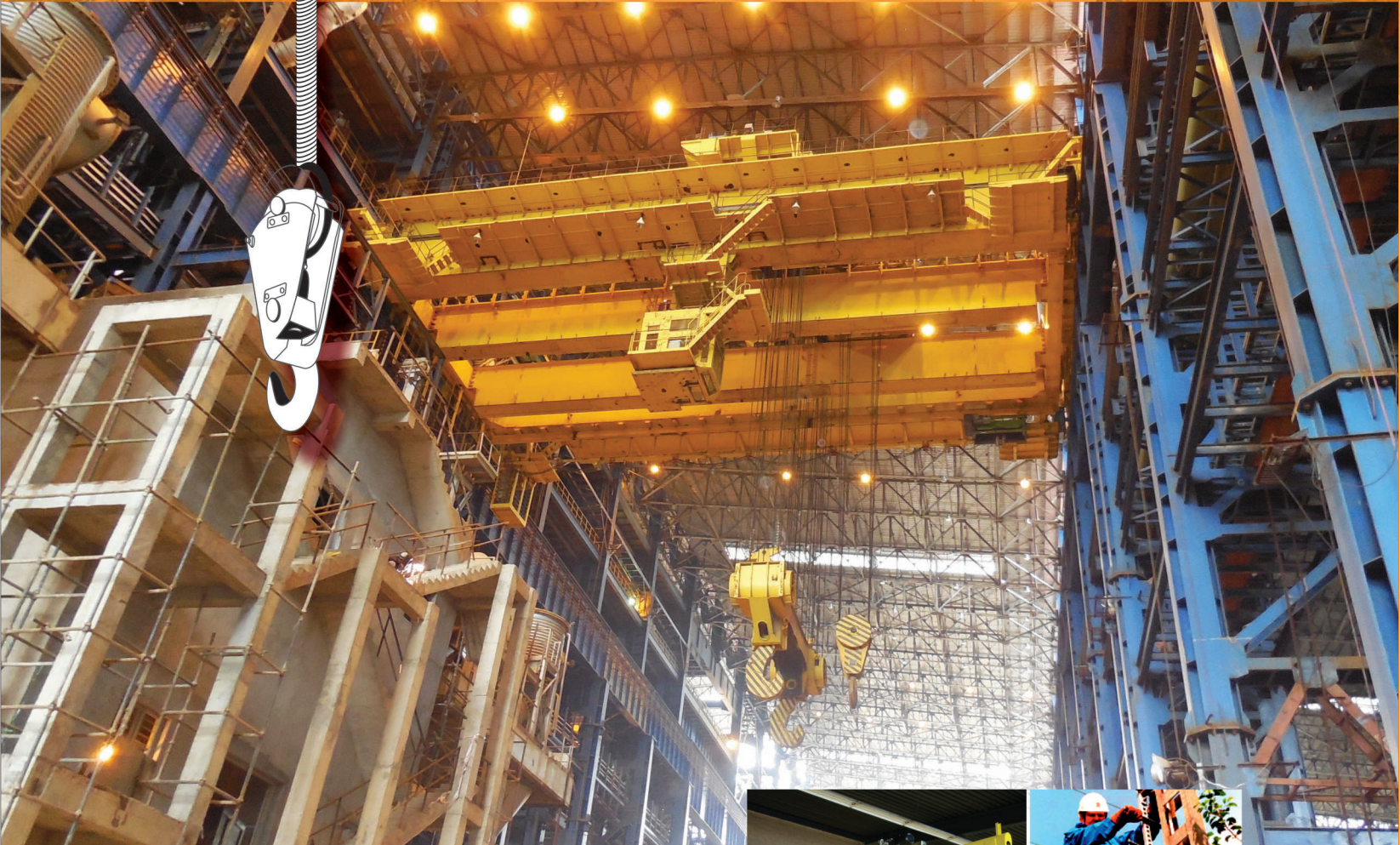


CRANE CONTROL EQUIPMENTS

SINCE 1988

A vital support of your Cranes



- Established Since 1988
- Complete In-house Testing Facilities
- Approved with various Govt. agencies
- Computer Aided Design.
- Compatible with all other makes.
- AN ISO 9001-2015 Certified Company.
- CE Certified Company.



An Introduction about us at Crane Control Equipments.

We are a leading **ISO 9001- 2015 & CE CERTIFIED COMPANY** established in the year **1988** manufacturing **Control Gear Equipment**, used in **EOT Cranes** , **Cane Unloaders** as well as **Grabbing Cranes** etc. which includes the following.

STARTING RESISTORS

- **AUTO Matic ROTOR STARTER PANEL**

DYNAMIC BRAKING RESISTORS

- **PUNCHED GRID RESISTANCE BOXES**

MASTER CONTROLLERS

- **S.S.WIRE GRID RESISTANCE BOXES**

LEVER LIMIT SWITCHES

- **ELECTRO HYDRAULIC THRUSTOR BRAKES**

ROTARY LIMIT SWITCHES

- **ELECTRO HYDRAULIC THRUSTORS**

CURRENT COLLECTORS

- **ELECTRO MAGNETIC BRAKES**

CABLE REELING DRUMS

- **FLEXIBLE GEARED COUPLINGS**

CABLE TROLLEYS

- **PENDANT PUSH BUTTON**

We are also manufacturing Starting / Slip Resistors used for starting high capacity Slip ring Motors in industries such as Sugar Mills, Rolling Mills etc. as well as Dynamic Braking Resistors for AC Drives.

Our **USP** has been to provide excellent service to both **Crane manufacturers** as well as users and most of the Crane manufacturers are installing our products as **original equipment**.

Our products are approved in both private as well as Government organisations.

We are in fact also a regular supplier to various Electricity Boards ,Railway Workshops and other government organisations all over India and our material is also being exported out side India.

Our products are designed, based on the respective Indian Standards and hence can be interchanged with other brands provided of course if the other manufacturer has also followed the correct Indian Standards while designing and manufacturing his product. Also in our company we have an on going process of **R&D** for improving the Quality of our products.

Since we are regularly manufacturing the products at times we can even supply material at short notice there by reducing the down time of the **customer's system during maintenance or brake down.**

Supplying equipment at short notice does not mean that the equipment does not under go proper tests.

An in house testing facility and quality control department checks every product as per the relevant standards before it is despatched from our works.

In addition to the complete range of Control Gear Equipment and in keeping with our commitment to provide our customers with the best possible services, We also supply **SHROUDED BUS BAR CONDUCTORS** as well as **RADIO REMOTE CONTROLS & ANTI-COLLISION DEVICE** etc. so that at our factory where we have a single out let, we can provide our customer be it a Crane manufacturer or a Crane user this unique service:

“The availability of complete range of Control Gear Products under one Roof”

COUNTER WEIGHT LIMIT SWITCH - ALUMINIUM ENCLOSURE

INTRODUCTION:

Counter Weight type Limit Switch is used for tripping supply to the Hoist Motion when the Moving Load reaches the extreme top position.

The Limit Switch operates the control change-over Contacts of motor of an moving equipment when a Cam moving with load actuates the Lever of the Limit Switch.

Once the Lever operates it turns the cams on a square shaft and operates the **NO/NC** contact elements.

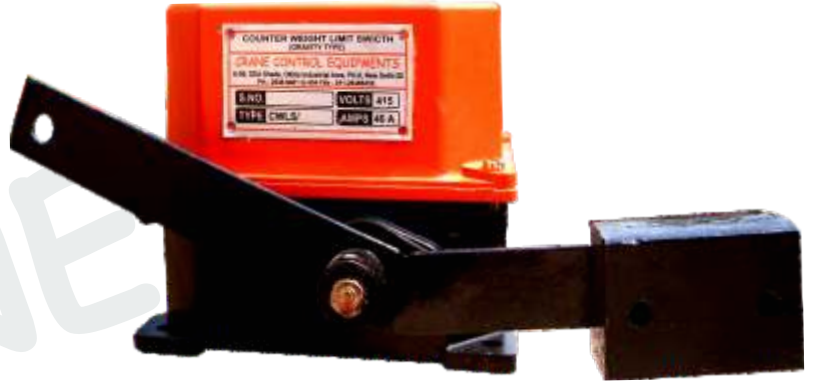
OPERATION :

Two or more Contact Elements are operated by respective rotating Cams, which are suitably fixed on a square Cam Shaft turned by a lever or weight. The contacts operate at 14° from central neutral position.

DESIGN : ALUMINIUM CAST BODY

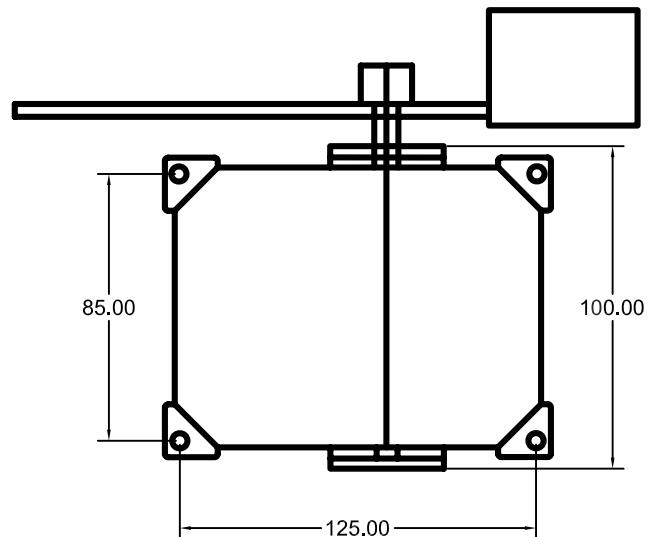
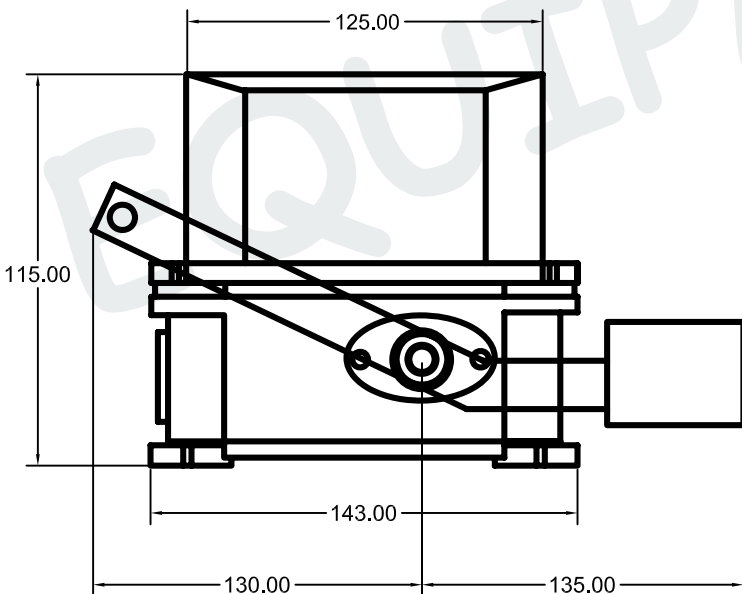
The Lever and Cover of the Limit Switches are finished by powder coating treatment. The Cam Shaft is mounted in the housing on moulded Nylon bushes (bearing) and are fixed through the front & rear walls.

The Wire Rope arrangement is in Customer's scope.



TECHNICAL DATA :

Body Material	Powder Coated Aluminium Cast
Degree of Protection	IP- 55
Mounting Position	Floor Mounting
Cable Entries	Twin. 3/4" BS conduit
No. of Contact	2
Wire Connection	Silver-Cadmimum
Rated Voltage	500 V AC
Thermal Test Current	40 Amps



COUNTER WEIGHT LIMIT SWITCH - SHEET METAL ENCLOSURE

INTRODUCTION:

Counter Weight type Limit Switch is used for tripping supply to the Hoist Motion when the Moving Load reaches the extreme top position.

The Limit Switch operates the control change-over Contacts motor of an moving equipment when a Cam moving with loc actuates the Lever of the Limit Switch.

Once the Lever operates it turns the cams on a square shaft and operates the **NO/NC** contact elements.

OPERATION:

Two or more Contact Elements are operated by respective rotating Cams, which are suitably fixed on a square Cam Shaft turned by a lever or weight. The contacts operate at 14° from central neutral position.

DESIGN: M S SHEET BODY

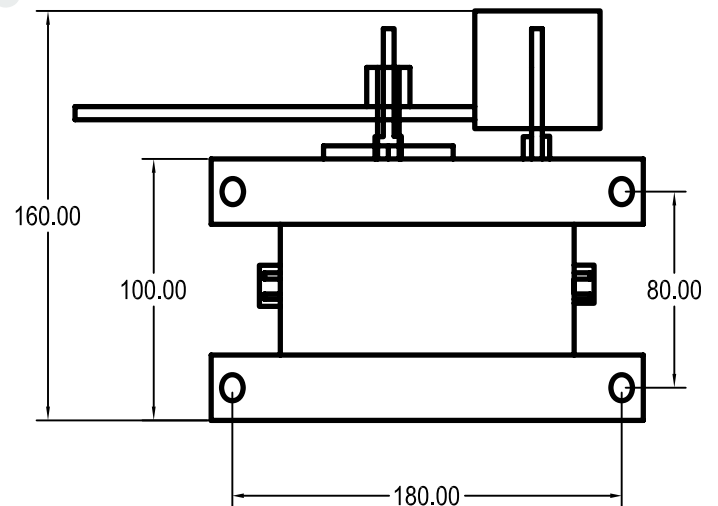
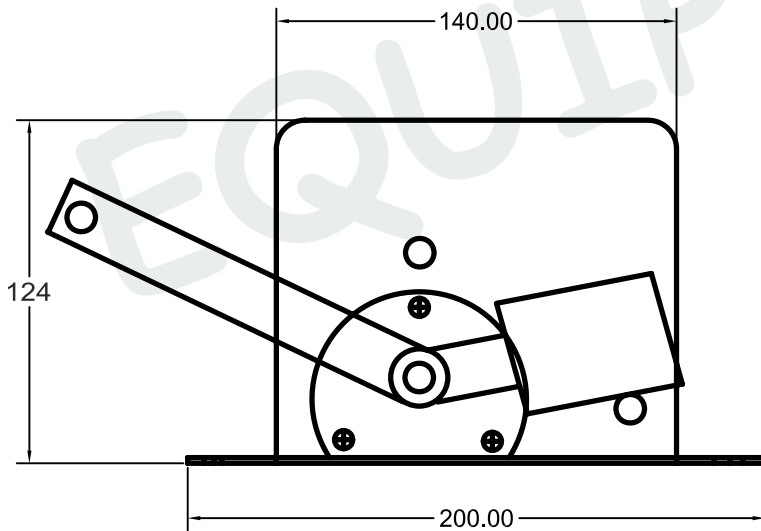
The Lever and Cover of the Limit Switches are finished by powder coating treatment. The Cam Shaft is mounted in the housing on moulded Nylon bushes (bearing) and are fixed through the front & rear walls.

The Wire Rope arrangement is in Customer's scope.



TECHNICAL DATA :

Body Material	Powder Coated Sheet Metal
Degree of Protection	IP- 41
Mounting Position	Floor Mounting
Cable Entries	Twin. 3/4" BS conduit
No. of Contact	2 / 3 / 4
Wire Connection	Silver-Cadmimum
Rated Voltage	500 V AC
Thermal Test Current	40 Amps



RADIO REMOTE CONTROL

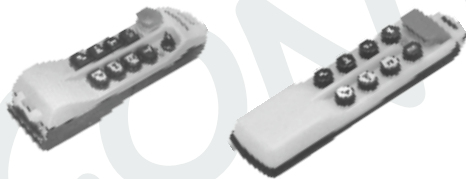


Durability, Reliability

Easy to use, Safe to operate

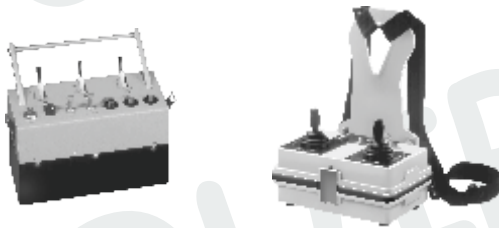


Economical, Safe to operate



User friendly, Easy to Install

Flexible push button layout



Compact, Choice of colour



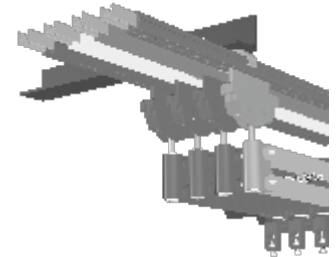
Designed as per requirement



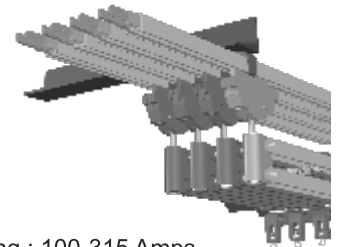
Compatible with all CC models

Handy / Compact Transmitter

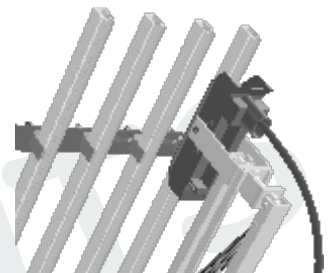
INSULATED CONDUCTOR BAR



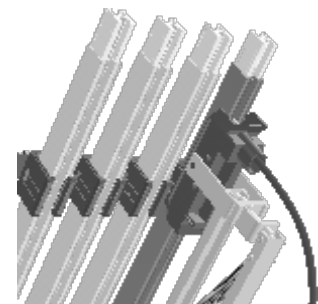
Rating : 60-400 Amps.



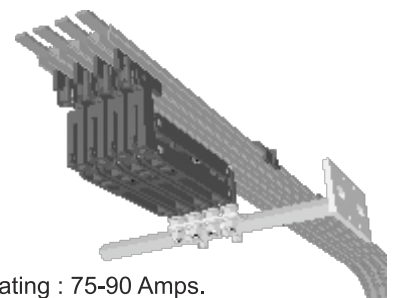
Rating : 100-315 Amps.



Rating : 60-150 Amps.

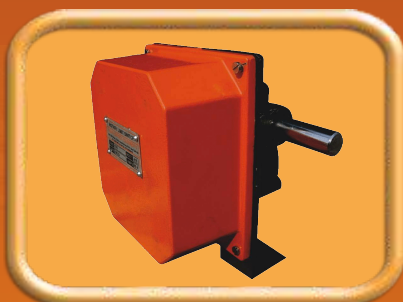


Rating : 500-1500 Amps.



Rating : 75-90 Amps.

CRANE CONTROL EQUIPMENTS



ROTARY GEARED LIMIT SWITCH



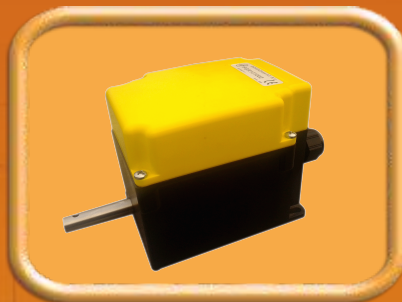
LEVER LIMIT SWITCH



COUNTER WT. LIMIT SWITCH



CROSS BAR LIMIT SWITCH



WORM DRIVE LIMIT SWITCH



DIFFERENTIAL LIMIT SWITCH



MASTER / CAM CONTROLLER



DUAL MASTER CONTROLLER



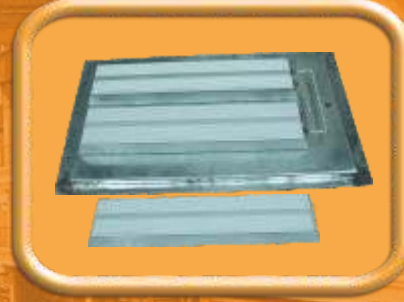
PENDANT PUSH BUTTON



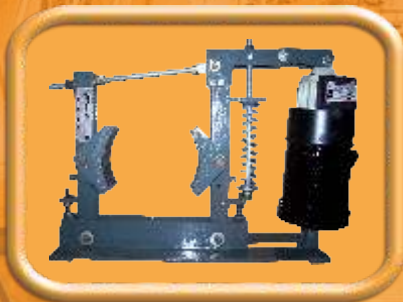
RESISTANCE BOX



DYNAMIC PUNCHED GRID TYPE



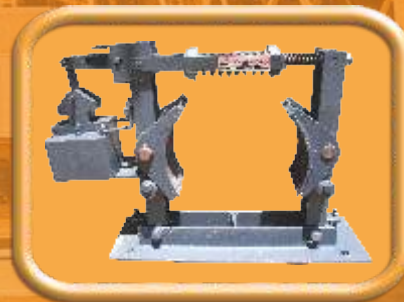
DBR MOULDED TYPE



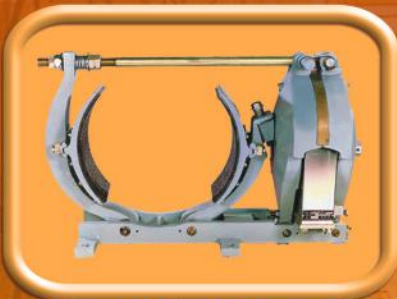
ELECTRO HYDRAULIC THRUSTER BRAKE



ELECTRO-HYDRAULIC THRUSTERS



A.C. ELECTROMAGNETIC BRAKE



D.C. ELECTRO - MAGNETIC BRAKE



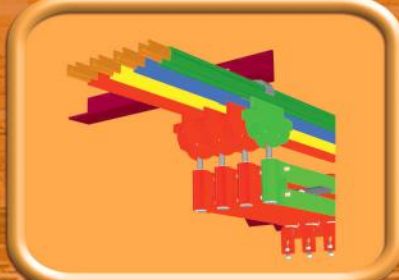
BRAKE DRUM COUPLING



FLEXIBLE GEARED COUPLING



RADIO REMOTE CONTROL



SHROUDED DSL



CURRENT COLLECTORS



DISC BRAKE



SNATCH BLOCK



RAIL CLAMPS



FLEXIBLE TRAILING CABLE



CABLE TROLLEYS



CABLE REELING DRUM

Works :

F-66, Okhla Industrial Area, Phase-I
New Delhi - 110 020

Ph. : +91-11-26818401 to 404

Fax : +91-11-26818405

E-Mail : ccedelhi@vsnl.com

salesccedelhi@gmail.com

cranecontrol@gmail.com

website : www.cranecontrolequipments.net

www.cranecontrolequipments.com

CRANE CONTROL EQUIPMENTS

AN ISO 9001-2015
AND CE CERTIFIED COMPANY

www.jas-anz.org