



UNITED AIR TECH INDS

Your Primary Source for Every Fan Requirement



CENTRIFUGAL BLOWER

MANUFACTURERS OF:

- ▶ INDUSTRIAL CENTRIFUGAL BLOWER
- ▶ DUST COLLECTION SYSTEM
- ▶ BAG FILTER
- ▶ TUBE AXIAL FLOW FAN
- ▶ CYCLONE DUST SEPARATOR
- ▶ MAN COOLER
- ▶ AIR CURTAIN
- ▶ SCRUBBER
- ▶ VENTILATION SYSTEM
- ▶ PRESSURIZATION SYSTEM
- ▶ FUME EXHAUST SYSTEM
- ▶ DUST FREE ROOM
- ▶ AIR POLLUTION CONTROL



DUST COLLECTOR



TUBE AXIAL FAN

MATERIAL OF CONSTRUCTION: (BLOWERS AND FANS) ▶

MS, MS + FRP, MS + HOT DIP GALVANIZED, MS + POWDER COATED, SS 304, SS304L, SS316, SS316L, SS317, SS310, SS202, SS316TI, PP, FRP, PP + FRP, ALUMINUM AND OTHER SPECIAL MATERIAL TO SPECIFICATION.

DUCTING MOC ▶ GI, MS, MS+FRP, SS 304, SS304L, SS316, SS316L, SS317, SS310, SS202, FRP, PP, PP+ FRP, ALUMINUM, SS316TI.

CENTRIFUGAL BLOWERS

CENTRIFUGAL BLOWER
FOR BOILER FLUE GASES



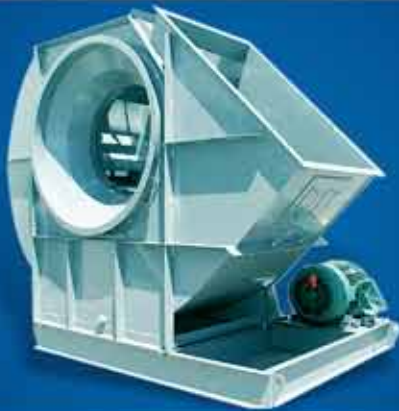
CENTRIFUGAL BLOWER
FOR HIGH PRESSURE AND
HIGH TEMPERATURE



CENTRIFUGAL BLOWER
V-BELT DRIVE
(MEDIUM PRESSURE)



VENTILATION FAN
(LOW PRESSURE)



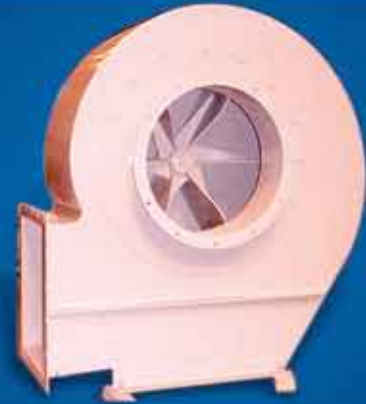
VENTILATION FAN
(MEDIUM PRESSURE)





**HIGH TEMPERATURE BLOWER
WITH BEARING COOLING
ARRANGEMENT**

**RADIAL BLOWER
FOR DUST HANDLING**



**CENTRIFUGAL BLOWER
DIESEL ENGINE DRIVEN
(SMOKE EXHAUST FAN)**

**HIGH TEMPERATURE FAN
(COUPLED DRIVE)**



**CENTRIFUGAL BLOWER
HIGH PRESSURE APPLICATION**



CYCLONE WITH BAG FILTER (OPEN TYPE)



Collection of dust in a cyclone separator is based on the action of inertial (centrifugal) forces upon dust particles.

Cyclone separators are normally used for the collection of coarse dust particles. The dusty air or the gas enters the cyclone separator from the top section through an inlet pipe which is designed for a tangential entry with high speed to effect a cyclonic motion in the cylindrical section of separator to enable the dust particles to lose their force and to fall through the hopper section to the bottom for the discharge and collection. The air or gas after reaching the end, namely the bottom conical section changes the direction and moves upwards to the outlet forming an inner vortex. Due to this upward movement of gases against gravity more dust particles are separated and fall through the bottom of the hopper section for discharge and collection.

- ▶ Dust filter Air/Gas Volume upto 1,00,000 CFM.
- ▶ Adequate to high dust concentration.
- ▶ Trouble free long life.
- ▶ High collection efficiency (Coarse Dust).
- ▶ Low initial cost.



CYCLONE SEPARATOR WITH CENTRIFUGAL BLOWER



CYCLONE SEPARATOR FOR RICE AND DAL MILL INDUSTRIES

INTEGRATED CYCLONE WITH BAG FILTER





**REVERSE PULSE JET BAG FILTER
(FULLY AUTOMATIC)**

BAG FILTERS (BAG HOUSE) AS DUST COLLECTORS

Available as per filter bag cleaning arrangement as (a) Manually shaker type, (b) Motorized Shaker type and (c) fully automatic as reverse pulsed jet system.

MANUAL SHAKER >

The dusty air enters at bottom level. The filter bags hangs by spring on holding frame has a connect lever for manually to shake to enable dust to fall for bottom collection through a tray or bin. The clean air leaves through the bags by suction pressure to the blower placed suitably on the collector or outside.

MOTORIZED SHAKER >

The bags on a holding frame is shaken by a vibratory motor for the dust on inside of filter bags to fall for bottom collection, while clean air leaves through the bags by suction pressure to the blower placed suitably on the collector or outside.

AUTOMATIC REVERSE PULSE JET >

The bags are cleaned row after row by compressed air released through solenoid valves actuated by an electronic sequential timer, while the pulsed air jet through a venturi, cleans the bags for dust to fall for bottom collection through a damper or a rotary valve operating by geared drive for designed output for dust for collection. The clean air leaves through the bags by suction pressure to the blower placed suitably on the collector or outside.



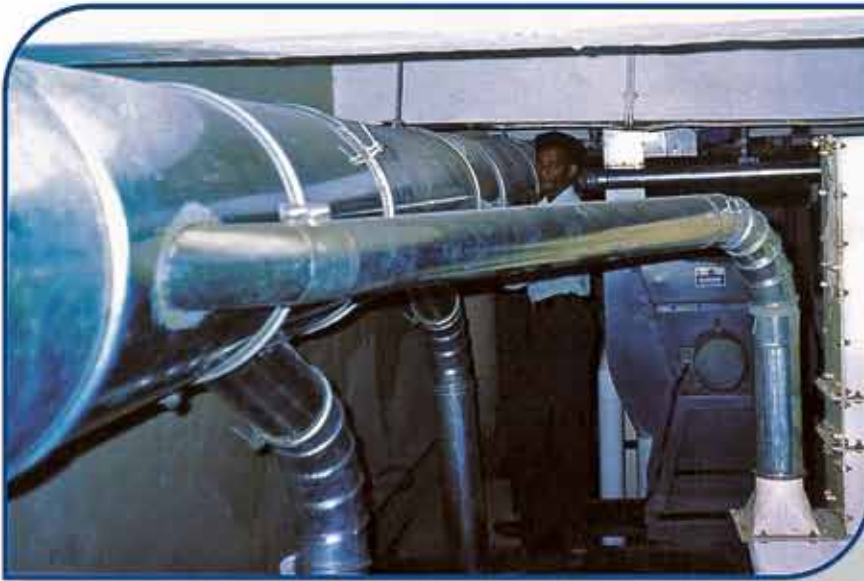
MINI DUST COLLECTOR



**DUST COLLECTOR
(MANUAL SHAKER TYPE)**



**REVERSE PULSE JET BAG FILTER
(FULLY AUTOMATIC)**

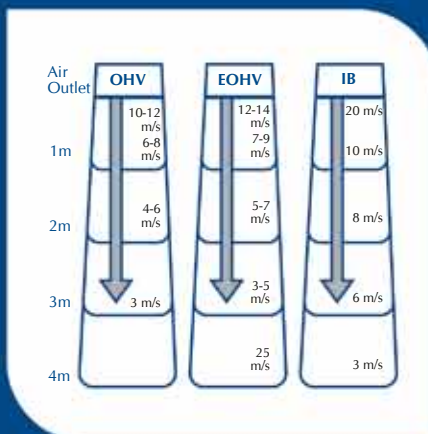


FABRICATION AND INSTALLATION OF DUCTING AT SITE (ALL OVER INDIA) : We fabricate and install ducting of SS, MS, GI, AL, PP, FRP, PP+FRP in round, square and rectangular size either to our design or as to customer design specifications and drawing.

AIR CURTAIN

Applications in a host of Establishments

- Ice Cream Parlours
- Sweet Shops
- Fast Food Centres
- Hotels
- Restaurants
- Bars
- Nursing Homes
- Hospitals
- Maternity Homes
- Clinics
- Laboratories
- Instrument Rooms
- Pharmaceuticals
- Manufacturing Units
- Factory Offices
- Banks
- Computer Rooms
- Airports
- Shopping Arcades
- Textile Mills
- Cold Storage



Technical Specification

MODEL	DIMENSIONS L x H x W mm	POWER CONSUMPTION watts
O H V	3 ft.	900 X 250 X 225
	1 m.	1000 X 250 X 225
	4 ft.	1200 X 250 X 225
	5 ft.	1500 X 250 X 225
E O H V	3 ft.	900 X 270 X 300
	1 m.	1000 X 270 X 300
	4 ft.	1200 X 270 X 300
	5 ft.	1500 X 270 X 300
I B	3 ft.	900 X 350 X 310
	1 m.	1000 X 350 X 310
	4 ft.	1200 X 350 X 310



**AIR HANDLING UNIT
FOR VENTILATION**



**ROTARY AIR LOCK VALVE
(CIRCULAR TYPE)**



**ROTARY AIR LOCK VALVE
(SQUARE TYPE)**



**FURNACE HOT AIR
RE-CIRCULATION FAN**



**FURNACE HOT AIR
RE-CIRCULATION FAN**



**DAMPER WITH GEAR WHEEL
MANUALLY OPERATED**



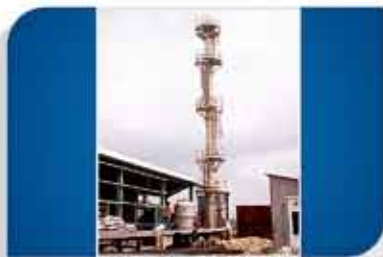
**HEAVY DUTY TUBULAR
MAN COOLER**



**HOT AIR FAN
FOR DRYING APPLICATION**



**PP+FRP BLOWER
FOR CHEMICAL FUME HANDLING**



SELF SUPPORTED CHIMNEY



**HDPE FILTER
90% DOWN TO 5 MICRON**



PAINTING BOOTH



**TUBE AXIAL FAN
(WALL MOUNTED/DUCT MOUNTED)**



**TUBE AXIAL FAN
FOOT MOUNTED**



TUBULAR MAN COOLER



**OIL RIG PLATFORM
COMPRESSOR ROOM EXHAUST FAN**



BIFURCATED AXIAL FAN



**SHIP ENGINE ROOM AND
PUMP ROOM EXHAUST FAN**



TUBE AXIAL FAN



TUBE AXIAL FAN V-BELT DRIVE



**TUBE AXIAL FAN V-BELT
FOR CORROSIVE FUMES**

UNITED AIRTECH INDS IS THREE DECADES OLD, REPUTED ENGINEERING ENTERPRISE CATERING TO EACH AND EVERY CLASS OF ENGINEERING AND PROCESS INDUSTRIES. OUR PRODUCTION AND SUPPLY PROGRAM INCLUDES INDUSTRIAL CENTRIFUGAL FANS, BLOWERS, AXIAL FANS AND ALSO TURN KEY INSTALLATIONS FOR VENTILATION, DUST AND FUME CONTROL FOR AIR POLLUTION CONTROL AS PER THE STATUTORY STANDARDS.

Head Office :
UNITED AIR TECH INDS
F-79, Solaris-1, Opp. L&T Gate 6,
Saki Vihar Road, Powai,
Mumbai : 400 072
INDIA

Manufacturing Unit :
UNITED AIR TECH INDS
Budhya Jadhav Wadi,
Saki Vihar Road, Powai,
Mumbai : 400 072
INDIA

Manufacturing Unit :
UNITED AIR TECH INDS
Unit-18&19, Nanda Indl Estate,
Sativli, Opp. Sagar Petrol Pump,
NH-8, Vasai (East), Thane : 401 208
INDIA

Branch Office & Manufacturing Unit :
UNITED STAR METAL WORKS LLC
Po Box : 121 866
Mobile : +97 1507466513
Dubai
UAE

Mob : +91 9324571126, 9920771126 TEL / FAX : +91 22 28571126 / 1125, 30580041, 66914977
Email : unitedairtech@gmail.com, blower@mtnl.net.in Web : www.alliedblowers.com