

# NEOCLASSICAL

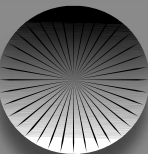
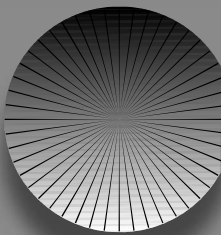
Furniture & Interior

## CATALOGUE

📷 neoclassicalfurniture

☎ 9896838821

#4, INDUSTRIAL ESTATE, AMBALA CANTT,  
HARYANA (INDIA)



# BRIEF PROFILE

We feel pleasure in introducing ourselves as the manufacturers of furniture of all kinds, wooden handicraft items, metal fabrication works etc.

Through this letter we would like to put some light on our brief history, product line, clients and capabilities.

Our group is a group of three firms **M/s Neoclassical Furniture & Interior, Metal Tech Industries and Rising international.**

Since 1985, in addition to our retail outlet of all types of furniture, we have catered to the **turnkey projects** for various **educational institutes, hotel industry, exporters, govt. organizations** etc. Wide range of our products allow us to serve such a diversified client base.

We are located in approved industrial estate of HSIIDC, having a plot area of 2400sq yard comprising a multi-story showroom area of about 10000sqft having display of wide range of tastefully crafted domestic furniture well fulfilling the needs of customers from Ambala, Chandigarh and surrounding cities.

Recently we have entered in the field of manufacturing of **laboratory furniture and outdoor furniture** also.

Our ignited enthusiasm and hunger for perfection drives us for constant improvisation and innovation.

Our enormous production capacity and vast workshop floor area along with the team of dedicated manpower enables us to efficiently execute almost any quantum of work orders in a time bound manner.

Both our manpower and machinery setup are efficient enough to take up any level of technical work. Machinery for wooden and metal fabrication work includes high power saw mill, cutters, lathe, punching and pressing, and MIG welding sets etc, in addition to the basic wood working and steel fabrication machines and hand tools.

**Regards,**

**AKHIL GUPTA 989683882**

**NEOCLASSICAL**



NC/COM/01

NC/COM/02



NEOCLASSICAL



NC/COM/03



NC/OT/01

**NEOCLASSICAL**



NC/OT/02



NC/OT/05



NC/OT/03



NC/OT/06



NC/OT/04

NEOCLASSICAL

NC/OT/07



NC/OT/08



NC/OT/09



NC/OT/10



NC/OT/11



NC/OT/12



NC/COM/04



NC/COM/05



NC/COM/06



NC/COM/07



NEOCLASSICAL

*NC/CT/01*



*NC/CT/02*



*NC/CT/03*



*NC/CT/04*



**NEOCLASSICAL**





NC/CT/05

NC/CT/06



NEOCLASSICAL





NC/OT/13



NC/OT/14



NC/OT/15

**NEOCLASSICAL**



NC/OT/16



NC/OT/17



NC/OT/18



NC/OT/19



NC/OT/20

**NEOCLASSICAL**



*NC/OT/21*



*NC/OT/22*



*NC/OT/23*



*NC/OT/24*

**NEOCLASSICAL**







NC/OT/25



NC/OT/26



NEOCLASSICAL FURNITURE AND INTERIORS

NC/OT/29



NC/OT/27



NC/OT/28

NEOCLASSICAL



*NC/T/01*



*NC/COM/08*



*NC/RT/01*





NC/COM/09



NC/COM/10



NC/COM/11



NC/COM/12



NC/COM/13



NC/COM/16



NC/COM/14



NC/COM/15

**NEOCLASSICAL**





*NC/COM/17*



*NC/COM/18*



*NC/COM/19*



*NC/COM/20*



*NC/COM/21*

**NEOCLASSICAL**



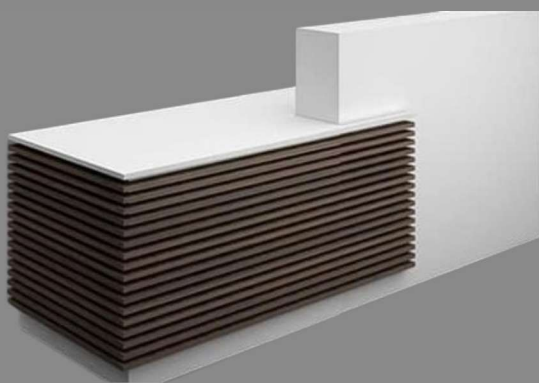
NC/RT/02



NC/RT/03



NC/RT/03



NC/RT/04

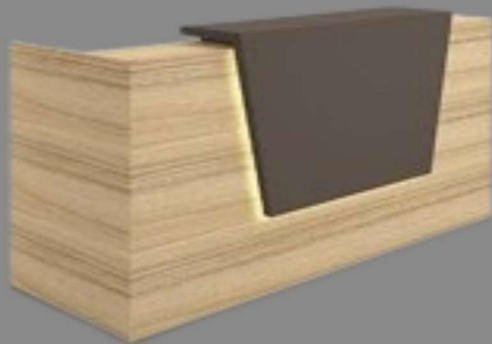


NC/RT/05

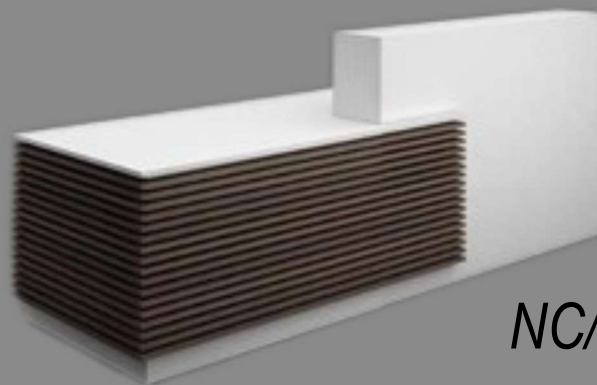


NC/RT/06

**NEOCLASSICAL**



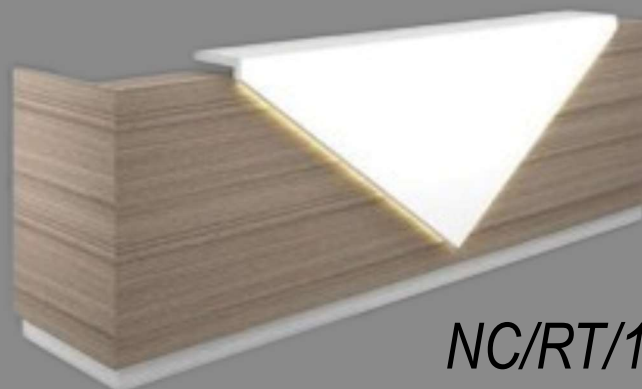
*NC/RT/07*



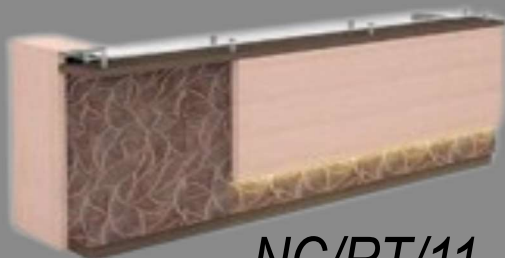
*NC/RT/08*



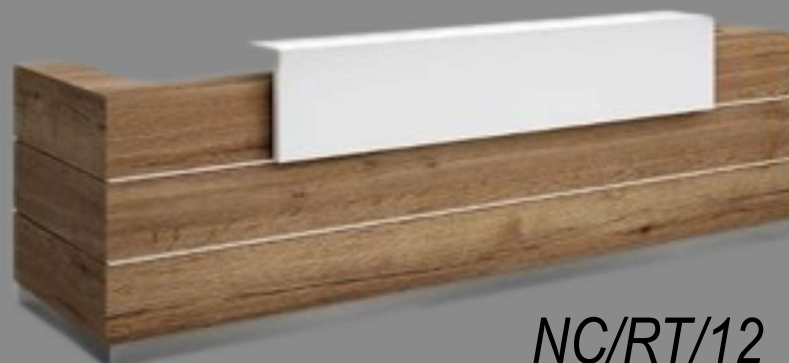
*NC/RT/09*



*NC/RT/10*



*NC/RT/11*



*NC/RT/12*

**NEOCLASSICAL**