



A JACTECH PROFILE

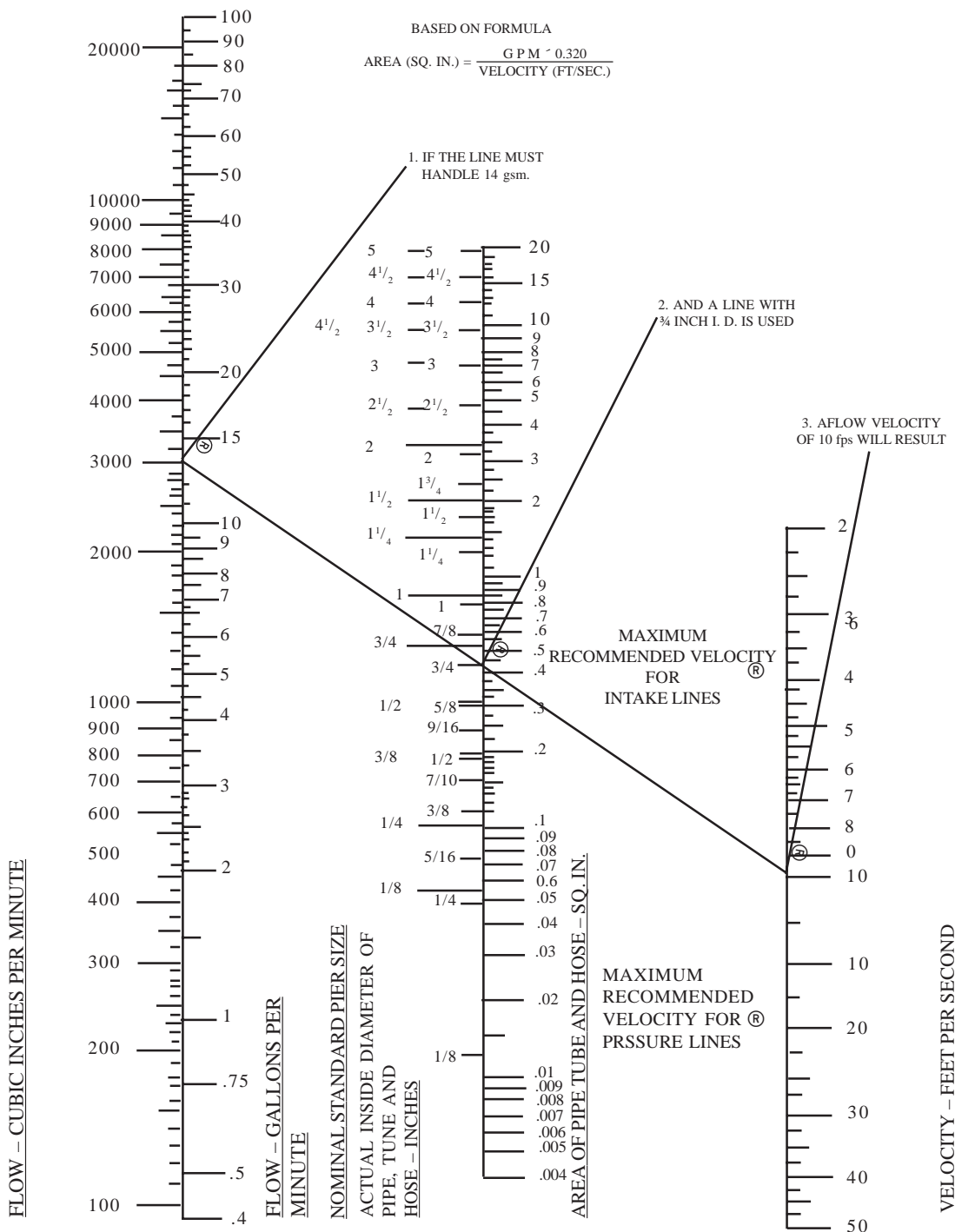
Jacktech Hydraulic is today a nationwide leader in the manufacturer of Hydraulic Fittings, Accessories, Power pack, Cylinder catering almost all leading Machine Tools Manufacturers, Earthmoving Machinery Automobile industries, Textile Machinery, Plastic Machinery, Pharmaceutical and Steel Plants. Founded in 1997, by a team of dedicate technocrats, it has always grown in leaps and bounds, and has won the esteem of all the customers. In attaining this goal, the Company's objectives of meeting the customer's increasing expectations for Quality, Delivery and Values, were never compromised.

The company has established a very good in house training, Design, manufacturing, inspection and testing facility, well equipped with latest equipment to maintain high quality standards. (Customer satisfaction) The company has over 2500 catalogue items, besides the product range of shut off valves, needles valves, direct acting pressure relief valves, modular valves, pipe clamps and SEA flange.

The company also doing Hose creeping on R1, R2, R12, and R13 hose pipe, with connection in BSP and metric size, the company has setup a coordinated and efficient distributor network all over county.



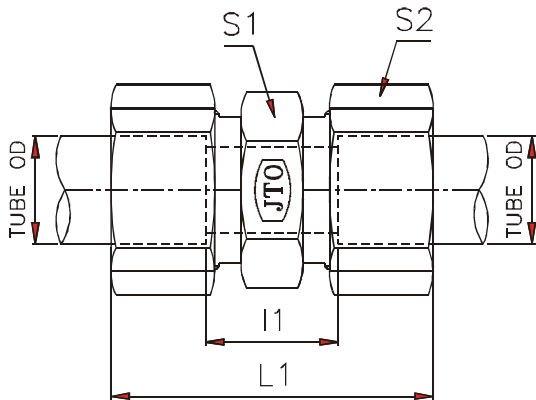
TUBE SELECTION CHART





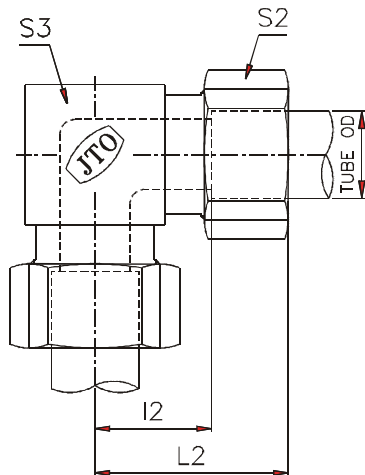
EQUAL COUPLINGS

STRAIGHT COUPLING



Series	Tube O.D.	S1	S2	L1 *	I1	Part No.	
Light	6	12	14	39	10	G 6-L	
	8	14	17	40	11	G 8-L	
	250 bar	10	17	19	42	13	G 10-L
	12	19	22	43	14	G 12-L	
160 bar	15	24	27	46	16	G 15-L	
	18	27	32	18	16	G 18-L	
	22	32	36	52	20	G 22-L	
	28	41	41	54	21	G 28-L	
100 bar	35	46	50	63	20	G 35-L	
	42	55	60	66	21	G 42-L	
	60	80	90	106	34	G 60-S	
	Heavy S	6	14	17	45	16	G 6-S
8		17	19	47	18	G 8-S	
630 bar		10	19	22	49	17	G 10-S
12		22	24	51	19	G 12-S	
400 bar	14	24	27	57	22	G 14-S	
	16	27	30	57	21	G 16-S	
	20	32	36	66	23	G 20-S	
	25	41	46	74	26	G 25-S	
250 bar	30	46	50	80	27	G 30-S	
	38	55	60	90	29	G 38-S	
150 bar	48	65	75	98	32	G 48-S	

EQUAL ELBOW COUPLING



Series	Tube O.D.	S2	S3	L2 *	I2	Part No.	
Light	6	14	12	27	12	W 6-L	
	8	17	14	29	14	W 8-L	
	250 bar	10	19	17	30	15	W 10-L
	12	22	19	32	17	W 12-L	
160 bar	15	27	22	36	21	W 15-L	
	18	32	27	40	23.5	W 18-L	
	22	36	30	44	27.5	W 22-L	
	28	41	36	47	30.5	W 28-L	
100 bar	35	50	46	56	34.5	W 35-L	
	42	60	55	63	40	W 42-L	
	60	90	80	95	62	W 60-S	
	Heavy S	6	17	14	31	16	W 6-S
8		19	17	32	17	W 8-S	
630 bar		10	22	19	34	17.5	W 10-S
12		24	22	38	21.5	W 12-S	
400 bar	14	27	22	40	22	W 14-S	
	16	30	24	43	24.5	W 16-S	
	20	36	30	48	26.5	W 20-S	
	25	46	36	54	30	W 25-S	
250 bar	30	50	46	62	35.5	W 30-S	
	38	60	55	72	41	W 38-S	
150 bar	48	75	65	85	55	W 48-S	

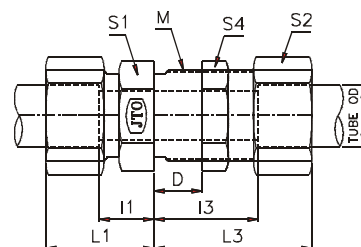


BULKHEAD COUPLINGS

STRAIGHT BULKHEAD COUPLING

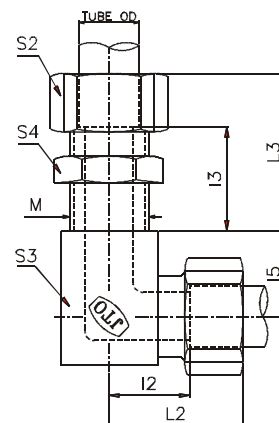
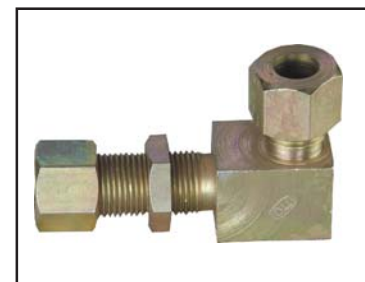
Series	Tube O.D.	M	S1	S2	S4	L1 *	I1	L3 *	I3	Part No.
Light	6	M12x1.5	17	14	17	22	7	42	27	SV 6 L
	L	8	M14x1.5	19	17	19	23	8	42	SV 8 L
	250	10	M16x1.5	22	19	22	25	10	43	SV 10 L
	bar	12	M18x1.5	24	22	24	25	10	44	SV 12 L
160	15	M22x1.5	27	27	30	27	12	46	31	SV 15 L
	bar	18	M26x1.5	32	32	36	30	13.5	49	SV 18 L
	bar	22	M30x2	36	36	41	33	16.5	51	SV 22 L
100	bar	28	M36x2	41	41	46	35	18.5	52	SV 28 L
	bar	35	M45X2	50	50	55	40	18.5	58	SV 35 L
	bar	42	M52X2	60	60	65	42	19	59	SV 42 L
Heavy	S	6	M14x1.5	19	17	19	27	12	44	SV 6 S
	S	8	M16x1.5	22	19	22	28	13	44	SV 8 S
	630	10	M18x1.5	24	22	24	31	14.5	46	SV 10 S
	bar	12	M20x1.5	27	24	27	31	14.5	47	SV 12 S
400	bar	14	M22x1.5	30	27	30	34	16	50	SV 14 S
	bar	16	M24x1.5	32	30	32	36	17.5	50	SV 16 S
	bar	20	M30x2	41	36	41	40	18.5	55	SV 20 S
250	bar	25	M36x2	46	46	46	43	19	59	SV 25 S
	bar	30	M42x2	50	50	50	47	20.5	64	SV 30 S
bar	38	M52x2	65	60	65	52	21	68	SV 38 S	

D = 16mm Max



ELBOW BULKHEAD COUPLING

Series	Tube O.D.	M	S2	S3	S4	L2 *	I2	L3 *	I3	I5	d2	Part No.
Light	6	M12x1.5	14	17	17	27	12	42	27	14	17	WSV 6 L
	L	8	M14x1.5	17	19	19	29	14	42	17	19	WSV 8 L
	250	10	M16x1.5	19	22	22	30	15	43	18	22	WSV 10 L
	bar	12	M18x1.5	22	24	24	32	17	44	19	24	WSV 12 L
160	bar	15	M22x1.5	27	27	30	36	21	46	23	27	WSV 15 L
	bar	18	M26x1.5	32	32	36	40	23.5	49	24	32	WSV 18 L
	bar	22	M30x2	36	36	41	44	27.5	51	30	36	WSV 22 L
100	bar	28	M36x2	41	42	46	47	30.5	52	34	42	WSV 28 L
	bar	35	M45X2	50	50	55	56	34.5	58	39	50	WSV 35 L
	bar	42	M52X2	60	60	65	63	40	59	36	43	WSV 42 L
Heavy	S	6	M14x1.5	17	19	19	31	16	44	17	19	WSV 6 S
	S	8	M16x1.5	19	22	22	32	17	44	18	22	WSV 8 S
	630	10	M18x1.5	22	24	24	34	17.5	46	20	24	WSV 10 S
	bar	12	M20x1.5	24	27	27	38	21.5	47	21	27	WSV 12 S
400	bar	14	M22x1.5	27	27	30	40	22	50	23	27	WSV 14 S
	bar	16	M24x1.5	30	30	32	43	24.5	50	24	30	WSV 16 S
	bar	20	M30x2	36	36	41	48	26.5	55	30	36	WSV 20 S
250	bar	25	M36x2	46	42	46	54	30	59	35	34	WSV 25 S
	bar	30	M42x2	50	50	50	62	35.5	64	37	43	WSV 30 S
bar	38	M52x2	60	60	65	72	41	68	37	43	WSV 38 S	

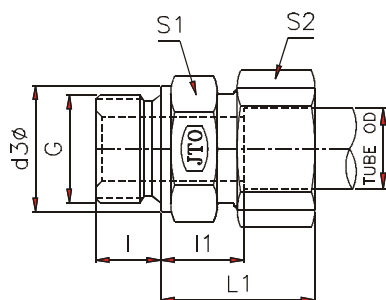


* Dimension given are approximate figures with tightened nut.



PARALLEL STUD COUPLINGS

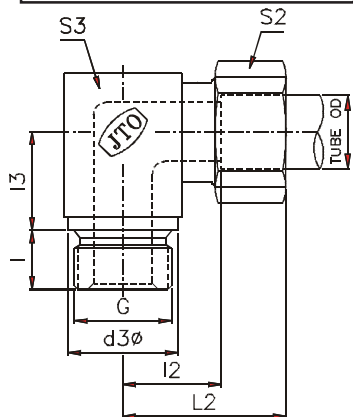
MALE STUD COUPLING



Series	Tube O.D.	S1	S2	L1 *	I1	I	d3 _E	G	Part No.	
Light	6	14	14	23	8.5	10	14	G/18	GE 6L X 1/8	
	8	19	17	25	10	12	18	G1/4	GE 8L X 1/4	
	8	22	17	26	11.5	12	22	G3/8	GE 8L X 3/8	
	L	10	19	19	26	11	12	18	G1/4	GE 10L X 1/4
	250 bar	10	22	19	27	12.5	12	22	G3/8	GE 10L X 3/8
		12	22	22	27	12.5	12	22	G3/8	GE 12L X 3/8
		12	19	22	27	12	12	18	G1/4	GE 12L X 1/4
		15	27	27	29	14	14	26	G1/2	GE 15L X 1/2
	160 bar	18	27	32	31	14.5	14	26	G1/2	GE 18L X 1/2
		22	32	36	33	16.5	16	32	G3/4	GE 22L X 3/4
100 bar	28	41	41	34	17.5	18	39	G1	GE 28L X 1	
	35	50	50	39	17.5	20	49	G1 1/4	GE 35L X 1 1/4	
	42	55	60	42	19	22	55	G1 1/2	GE 42L X 1 1/2	
	60	85	90	66	30	26	84	G 2 1/2	GE 60S X 2 1/2	
	Heavy	6	19	17	28	13	12	18	G1/4	GE 6S X 1/4
S		8	19	19	30	15	12	18	G1/4	GE 8S X 1/4
10		22	22	31	15	12	22	G3/8	GE 10S X 3/8	
630 bar		12	22	24	33	17	12	22	G3/8	GE 12S X 3/8
		12	27	24	34	17.5	14	26	G1/2	GE 12S X 1/2
		14	27	27	37	19	14	26	G1/2	GE 14S X 1/2
400 bar	16	27	30	37	18.5	14	26	G1/2	GE 16S X 1/2	
	20	32	36	42	20.5	16	32	G3/4	GE 20S X 3/4	
	25	41	46	47	23	18	39	G1	GE 25S X 1	
250 bar	30	50	50	50	23.5	20	49	G1 1/4	GE 30S X 1 1/4	
	38	55	60	57	26	22	55	G1 1/2	GE 38S X 1 1/2	
150 bar	48	70	75	62	29	24	69	G 2	GE 48S X 2	

Also available with Elastomeric Seal, BSPT, Matric Series.

MALE STUD ELBOW COUPLING



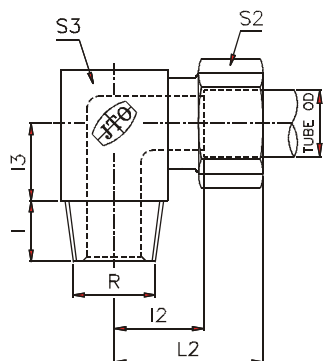
Series	Tube O.D.	S2	S3	L2	I2	I3	I	d3	G	Part No.
250 bar	15	27	27	36	21	20	14	26	G1/2	WE 15L X 1/2
Light	18	32	27	40	23.5	22	14	26	G1/2	WE 18L X 1/2
	160 bar	22	36	32	44	27.5	16	32	G3/4	WE 22L X 3/4
100 bar	28	41	41	47	30.5	30	18	39	G1	WE 28L X 1
	35	50	50	56	34.5	34	20	49	G1 1/4	WE 35L X 1 1/4
	42	60	55	63	40	39	22	55	G1 1/2	WE 42L X 1 1/2
630 bar	14	27	27	40	22	20	14	26	G 1/2	WE 14S X 1/2
Heavy	16	30	27	43	24.5	23	14	26	G 1/2	WE 16S X 1/2
	S	20	36	32	48	26.5	16	32	G3/4	WE 20S X 3/4
400 bar	25	46	41	54	30	30	18	39	G1	WE 25S X 1
	250 bar	30	50	50	62	35.5	35.5	20	49	G1 1/4
38		60	55	72	41	41	22	55	G1 1/2	WE 38S X 1 1/2

* Dimension given are approximate figures with tightened nut.



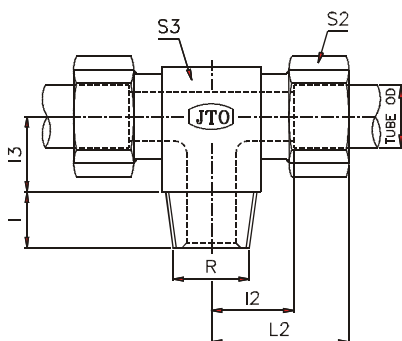
TAPER MALE STUD COUPLINGS

TAPER MALE STUD ELBOW



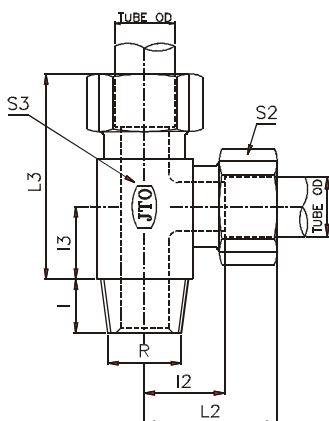
Series	Tube O.D.	S2	S3	L2 *	I2	I3	I	R	Part No.
Light	6	14	12	27	12	20	10	R1/8	WER 6L X 1/8
L	8	17	14	29	14	26	14	R1/4	WER 8L X 1/4
250	10	19	17	30	15	27	14	R1/4	WER 10L X 1/4
bar	12	22	19	32	17	28	15	R3/8	WER 12L X 3/8
	15	27	22	36	21	34	16	R1/2	WER 15L X 1/2
160	18	32	27	40	23.5	36	16	R1/2	WER 18L X 1/2
bar									
Heavy	6	17	14	31	16	26	14	R1/4	WER 6S X 1/4
S	8	19	17	32	17	27	14	R1/4	WER 8S X 1/4
630	10	22	19	34	17.5	28	15	R3/8	WER 10S X 3/8
bar	12	24	22	38	21.5	28	15	R3/8	WER 12S X 3/8
	14	27	22	40	22	32	16	R1/2	WER 14S X 1/2
400	16	30	24	43	24.5	32	16	R1/2	WER 16S X 1/2
bar									

TAPER MALE STUD BRANCH TEE COUPLING



Series	Tube O.D.	S2	S3	L2 *	I2	I3	I	R	Part No.
Light	6	14	12	27	12	20	10	R1/8	TER 6L X 1/8
L	8	17	14	29	14	26	14	R1/4	TER 8L X 1/4
250	10	19	17	30	15	27	14	R1/4	TER 10L X 1/4
bar	12	22	19	32	17	28	15	R3/8	TER 12L X 3/8
	15	27	22	36	21	34	16	R1/2	TER 15L X 1/2
160	18	32	27	40	23.5	36	16	R1/2	TER 18L X 1/2
bar									
Heavy	6	17	14	31	16	26	14	R1/4	TER 6S X 1/4
S	8	19	17	32	17	27	14	R1/4	TER 8S X 1/4
630	10	22	19	34	17.5	28	15	R3/8	TER 10S X 3/8
bar	12	24	22	38	21.5	28	15	R3/8	TER 12S X 3/8
	14	27	22	40	22	32	16	R1/2	TER 14S X 1/2
400	16	30	24	43	24.5	32	16	R1/2	TER 16S X 1/2
bar									

TAPER MALE STUD RUN TEE COUPLING



Series	Tube O.D.	S2	S3	L2 *	I2	L3	I3 *	I	R	Part No.
Light	6	14	12	27	12	47	20	10	R1/8	LER 6L X 1/8
L	8	17	14	29	14	55	26	14	R1/4	LER 8L X 1/4
250	10	19	17	30	15	57	27	14	R1/4	LER 10L X 1/4
bar	12	22	19	32	17	60	28	15	R3/8	LER 12L X 3/8
	15	27	22	36	21	70	34	16	R1/2	LER 15L X 1/2
160	18	32	27	40	23.5	76	36	16	R1/2	LER 18L X 1/2
bar										
Heavy	6	17	14	31	16	57	26	14	R1/4	LER 6S X 1/4
S	8	19	17	32	17	59	27	14	R1/4	LER 8S X 1/4
400	10	22	19	34	17.5	62	28	15	R3/8	LER 10S X 3/8
bar	12	24	22	38	21.5	66	28	15	R3/8	LER 12S X 3/8
	14	27	22	40	22	72	32	16	R1/2	LER 14S X 1/2
400	16	30	24	43	24.5	75	32	16	R1/2	LER 16S X 1/2
bar										

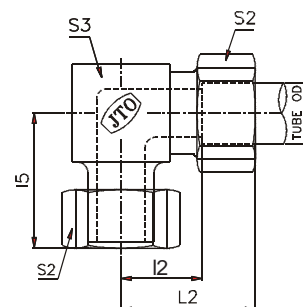
* Dimension given are approximate figures with tightened nut.



SWIVEL COUPLINGS

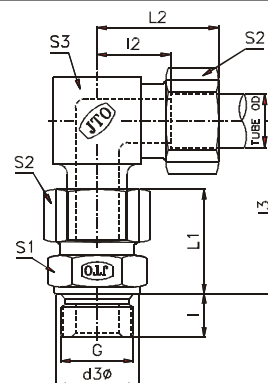
SWIVEL ELBOW COUPLING

Series	Tube O.D.	S2	S3	Thd. Size	L2 *	I2	I5	Part No.	
Light	6	14	12	M12x1.5	27	12	26	EVW 6 L	
	8	17	14	M14x1.5	29	14	27	EVW 8 L	
	250 bar	10	19	17	M16x1.5	30	15	28.5	EVW 10 L
		12	22	19	M18x1.5	32	17	29	EVW 12 L
160 bar	15	27	22	M22x1.5	36	21	32	EVW 15 L	
	18	32	27	M26x1.5	40	23.5	35	EVW 18 L	
	22	36	30	M30x2	44	27.5	38	EVW 22 L	
100 bar	28	41	36	M36x2	47	30.5	41.5	EVW 28 L	
	35	50	46	M45x2	56	34.5	51	EVW 35 L	
	42	60	55	M52x2	63	40	56	EVW 42 L	
Heavy S	6	17	14	M14x1.5	31	16	27	EVW 6 S	
	8	19	17	M16x1.5	32	17	27	EVW 8 S	
	630 bar	10	22	19	M18x1.5	34	17.5	29.5	EVW 10 S
		12	24	22	M20x1.5	38	21.5	30.5	EVW 12 S
400 bar	14	27	22	M22x1.5	40	22	34.5	EVW 14 S	
	16	30	24	M24x1.5	43	24.5	36	EVW 16 S	
	20	36	30	M30x2	48	26.5	44	EVW 20 S	
250 bar	25	46	36	M36x2	54	30	49.5	EVW 25 S	
	30	50	46	M42x2	62	35.5	55	EVW 30 S	
bar	38	60	55	M52x2	72	41	63	EVW 38 S	



SWIVEL ELBOW CONNECTOR

Series	Tube O.D.	S2	S3	L2 *	I2	I3	L1	S1	d3 \varnothing	I	G	Part No.	
Light	6	14	12	27	27	34.5	23	14	14	8	G1/8	EVWR 6S X 1/8	
	8	17	14	29	29	37.5	25	19	18	12	G1/4	EVWR 8S X 1/4	
	250 bar	10	19	17	30	30	40	26	19	18	12	G1/4	EVWR 10S X 1/4
		12	22	19	32	32	43	27	22	22	12	G3/8	EVWR 12S X 3/8
160 bar	15	27	22	36	36	47.5	29	27	26	14	G1/2	EVWR 15S X 1/2	
	18	32	27	40	40	50.5	31	27	26	14	G1/2	EVWR 18S X 1/2	
	22	36	30	44	44	55.5	33	32	32	16	G3/4	EVWR 22S X 3/4	
100 bar	28	41	36	47	47	61	34	41	39	18	G1	EVWR 28S X 1	
	35	50	46	56	56	72	39	50	49	20	G1 1/4	EVWR 35S X 1 1/4	
	42	60	55	63	63	79	42	55	55	22	G1 1/2	EVWR 42S X 1 1/2	
Heavy S	6	17	14	31	16	40	28	19	18	12	G 1/4	EVWR 6S X 1/4	
	8	19	17	32	17	44	30	19	18	12	G 1/4	EVWR 8S X 1/4	
	630 bar	10	22	19	34	17.5	47	31	22	22	12	G 3/8	EVWR 10S X 3/8
		12	24	22	38	21.5	50	33	22	22	12	G 3/8	EVWR 12S X 3/8
400 bar	14	27	22	40	22	55	37	27	26	14	G1/2	EVWR 14S X 1/2	
	16	30	24	43	24.5	56	37	27	26	14	G1/2	EVWR 16S X 1/2	
	20	36	30	48	26.5	65	42	32	32	16	G3/4	EVWR 20S X 3/4	
250 bar	25	46	36	54	30	73.5	47	41	39	18	G1	EVWR 25S X 1	
	30	50	46	62	35.5	80	50	50	49	20	G1 1/4	EVWR 30S X 1 1/4	
bar	38	60	55	72	41	93.5	55	57	55	22	G1 1/2	EVWR 38S X 1 1/2	



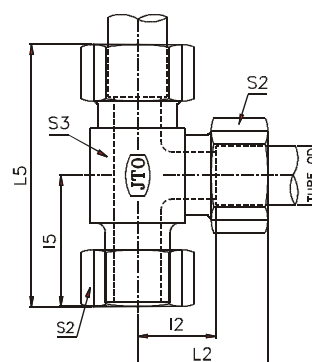
* Dimension given are approximate figures with tightened nut.



SWIVEL COUPLINGS

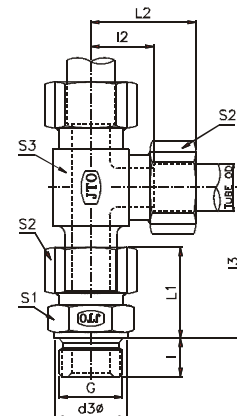
SWIVEL RUN TEE COUPLING

Series	Tube O.D.	S2	S3	M	L2 *	I2	L5 *	I5	Part No.	
Light	6	14	12	M12x1.5	27	12	53	26	EVL 06 L	
	L	8	17	M14x1.5	29	14	56	27	EVL 08 L	
	250 bar	10	19	17	M16x1.5	30	15	59	28.5	EVL 10 L
		12	22	19	M18x1.5	32	17	61	29	EVL 12 L
160 bar	15	27	22	M22x1.5	36	21	68	32	EVL 15 L	
	18	32	27	M26x1.5	40	23.5	75	35	EVL 18 L	
	22	36	30	M30x2	44	27.5	82	38	EVL 22 L	
100 bar	28	41	36	M36x2	47	30.5	89	41.5	EVL 28 L	
	35	50	46	M45x2	56	34.5	107	51	EVL 35 L	
	42	60	55	M52x2	63	40	119	56	EVL 42 L	
Heavy S	6	17	14	M14x1.5	31	16	58	27	EVL 06 S	
	8	19	17	M16x1.5	32	17	59	27	EVL 08 S	
	630 bar	10	22	19	M18x1.5	34	17.5	64	29.5	EVL 10 S
		12	24	22	M20x1.5	38	21.5	69	30.5	EVL 12 S
400 bar	14	27	22	M22x1.5	40	22	75	34.5	EVL 14 S	
	16	30	24	M24x1.5	43	24.5	79	36	EVL 16 S	
	20	36	30	M30x2	48	26.5	92	44	EVL 20 S	
250 bar	25	46	36	M36x2	54	30	104	49.5	EVL 25 S	
	30	50	46	M42x2	62	35.5	117	55	EVL 30 S	
	38	60	55	M52x2	72	41	135	63	EVL 38 S	



SWIVEL RUN TEE CONNECTOR

Series	Tube O.D.	S2	S3	L2	I2	I3	L1 *	S1	d3 _E	I	G	Part No.	
Light	6	14	12	27	12	34.5	23	14	14	8	G1/8	EVLR 6L X 1/8	
	L	8	17	14	19	14	37.5	25	19	12	G1/4	EVLR 8L X 1/4	
	250 bar	10	19	17	22	15	40	26	19	18	12	G1/4	EVLR 10L X 1/4
		12	22	19	24	17	43	27	22	22	12	G3/8	EVLR 12L X 3/8
160 bar	15	27	22	27	21	47.5	29	27	26	14	G1/2	EVLR 15L X 1/2	
	18	32	27	32	23.5	50.5	31	27	26	14	G1/2	EVLR 18L X 1/2	
	22	36	30	36	27.5	55.5	33	32	32	16	G3/4	EVLR 22L X 3/4	
100 bar	28	41	36	47	30.5	61	34	41	39	18	G1	EVLR 28L X 1	
	35	50	46	56	34.5	72	39	50	49	20	G1 1/4	EVLR 35L X 1 1/4	
	42	60	55	40	40	79	42	55	55	22	G1 1/2	EVLR 42L X 1 1/2	
Heavy S	6	17	14	31	16	40	28	19	18	12	G 1/4	EVLR 6S X 1/4	
	8	19	17	32	17	44	30	19	18	12	G 1/4	EVLR 8S X 1/4	
	630 bar	10	22	19	34	17.5	47	31	22	22	12	G 3/8	EVLR 10S X 3/8
		12	24	22	38	21.5	50	33	22	22	12	G 3/8	EVLR 12S X 3/8
400 bar	14	27	22	40	22	55	37	27	26	14	G1/2	EVLR 14S X 1/2	
	16	30	24	43	24.5	56	37	27	26	14	G1/2	EVLR 16S X 1/2	
	20	36	30	48	26.5	65	42	32	32	16	G3/4	EVLR 20S X 3/4	
250 bar	25	46	36	54	30	73.5	47	41	39	18	G1	EVLR 25S X 1	
	30	50	46	62	35.5	80	50	50	49	20	G1 1/4	EVLR 30S X 1 1/4	
	38	60	55	72	41	93.5	55	55	55	22	G1 1/2	EVLR 38S X 1 1/2	



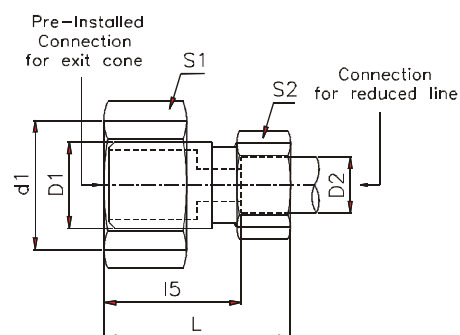
* Dimension given are approximate figures with tightened nut.



STANDPIPES

REDUCING STANDPIPE (Light Series L)

Nom. Pr. bar	Tube O.D. D1	Tube O.D. D2	Thd. Size d1	L *	I5	S1	S2	Part No.
250	8	6	M14X1.5	38	23.5	17	14	KOR 8L X 06L
	10	6	M16X1.5	38	23.5	19	14	KOR 10L X 06L
	10	8	M16X1.5	38	23.5	19	17	KOR 10L X 08L
250	12	6	M18X1.5	38	23.5	22	14	KOR 12L X 06L
	12	8	M18X1.5	38	23.5	22	17	KOR 12L X 08L
	12	10	M18X1.5	39	24.5	22	19	KOR 12L X 10L
250	15	6	M22X1.5	38	23.5	27	14	KOR 15L X 06L
	15	8	M22X1.5	38	23.5	27	17	KOR 15L X 08L
	15	10	M22X1.5	39	24.5	27	19	KOR 15L X 10L
	15	12	M22X1.5	39	24.5	27	22	KOR 15L X 12L
160	18	6	M26X1.5	39	24.5	32	14	KOR 18L X 06L
	18	8	M26X1.5	39	24.5	32	17	KOR 18L X 08L
	18	10	M26X1.5	40	25.5	32	19	KOR 18L X 10L
	18	12	M26X1.5	40	25.5	32	22	KOR 18L X 12L
	18	15	M26X1.5	42	26.5	32	27	KOR 18L X 15L
160	22	6	M30X2	40	25.5	36	14	KOR 22L X 06L
	22	8	M30X2	40	25.5	36	17	KOR 22L X 08L
	22	10	M30X2	41	26.5	36	19	KOR 22L X 10L
	22	12	M30X2	41	26.5	36	22	KOR 22L X 12L
	22	15	M30X2	43	27.5	36	27	KOR 22L X 15L
	22	18	M30X2	43	27	36	32	KOR 22L X 18L
100	28	6	M36X2	41	26.5	41	14	KOR 28L X 06L
	28	8	M36X2	41	26.5	41	17	KOR 28L X 08L
	28	10	M36X2	42	27.5	41	19	KOR 28L X 10L
	28	12	M36X2	42	27.5	41	22	KOR 28L X 12L
	28	15	M36X2	44	28.5	41	27	KOR 28L X 15L
	28	18	M36X2	44	28	41	32	KOR 28L X 18L
	28	22	M36X2	46	30	41	36	KOR 28L X 22L
100	35	6	M45X2	46	31.5	50	14	KOR 35L X 06L
	35	8	M45X2	46	31.5	50	17	KOR 35L X 08L
	35	10	M45X2	47	32.5	50	19	KOR 35L X 10L
	35	12	M45X2	47	32.5	50	22	KOR 35L X 12L
	35	15	M45X2	49	32.5	50	27	KOR 35L X 15L
	35	18	M45X2	49	33	50	32	KOR 35L X 18L
	35	22	M45X2	41	35	50	36	KOR 35L X 22L
	35	28	M45X2	52	35	50	41	KOR 35L X 28L
100	42	10	M52X2	48	33.5	60	19	KOR 42L X 10L
	42	12	M52X2	48	33.5	60	22	KOR 42L X 12L
	42	15	M52X2	50	34.5	60	27	KOR 42L X 15L
	42	18	M52X2	50	34	60	32	KOR 42L X 18L
	42	22	M52X2	52	36	60	36	KOR 42L X 22L
	42	28	M52X2	53	36	60	41	KOR 42L X 28L
	42	35	M52X2	57	35	60	50	KOR 42L X 35L



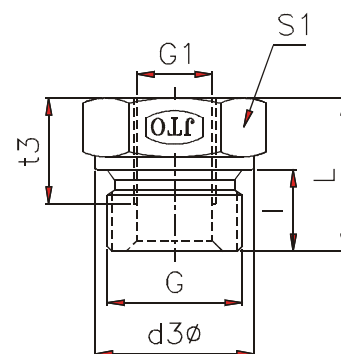
* Dimension given are approximate figures with tightened nut.



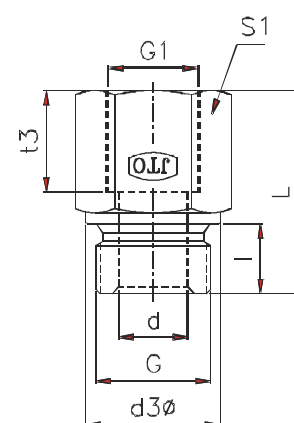
REDUCERS

MALE / FEMALE REDUCING THREAD ADAPTORS

Nom. Pr.	Male Stud G	Female Thread G1	L	I	S1	d 3 $\bar{\epsilon}$	t3	Part No.
630 bar	G3/8	G1/8	22.5	12	22	22	10	RI 3/8 M X 1/8 F
	G1/2	G1/4	24	14	27	26	12	RI 1/2 M X 1/4 F
	G3/4	G1/4	26	16	32	32	12	RI 3/4 M X 1/4 F
	G3/4	G3/8	26	16	32	32	12	RI 3/4 M X 3/8 F
400 bar	G1	G1/4	29	18	41	39	12	RI 1 M X 1/4 F
	G1	G3/8	29	18	41	39	12	RI 1 M X 3/8 F
	G1	G1/2	29	18	41	39	14	RI 1 M X 1/2 F
250 bar	G1 1/4	G1/2	32	20	50	49	14	RI 1 1/4 M X 1/2 F
	G1 1/4	G3/4	32	20	50	49	16	RI 1 1/4 M X 3/4 F
	G1 1/2	G1/2	36	22	55	55	14	RI 1 1/2 M X 1/2 F
	G1 1/2	G3/4	36	22	55	55	16	RI 1 1/2 M X 3/4 F
	G1 1/2	G1	36	22	55	55	18	RI 1 1/2 M X 1/2 F
	G2	G1	44	24	70	69	24.5	RI 2 M X 1 F
G2	G 1 1/4	G 1 1/4	44	24	70	69	26.5	RI 2 M X 1 1/4 F
								G 2 1/2



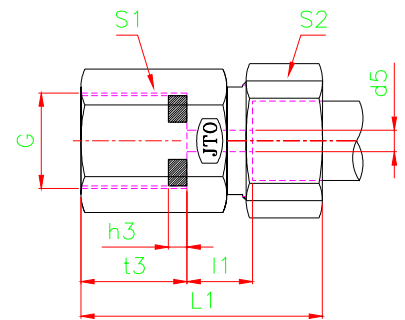
Nom. Pr. bar	Male Stud G	Female Thread G1	L	I	S1	d	d 3 $\bar{\epsilon}$	t2	Part No.								
630 bar	G1/8	G1/4	31	8	19	4	14	17	RI 1/8 M X 1/4 F								
	G1/8	G3/8	32	8	24	4	14	17	RI 1/8 M X 3/8 F								
630 bar	G1/4	G1/8	28	12	19	5	18	12	RI 1/4 M X 1/8 F								
	G1/4	G3/8	36	12	24	5	18	17	RI 1/4 M X 3/8 F								
	G1/4	G1/2	40	12	30	5	18	20	RI 1/4 M X 1/2 F								
	G1/4	G3/4	43	12	36	5	18	22	RI 1/4 M X 3/4 F								
630	G3/8	G1/4	36	12	22	8	22	17	RI 3/8 M X 1/4 F								
630	G3/8	G1/2	41	12	30	8	22	20	RI 3/8 M X 1/2 F								
400	G3/8	G3/4	44	12	36	8	22	22	RI 3/8 M X 3/4 F								
630	G1/2	G3/8	36	14	27	12	26	17	RI 1/2 M X 3/8 F								
400	G1/2	G3/4	46	14	36	12	26	22	RI 1/2 M X 3/4 F								
400	G1/2	G1	49	14	41	12	26	24.5	RI 1/2 M X 1 F								
250	G1/2	G1 1/4	53	14	55	10	26	26.5	RI 1/2 M X 1 1/4 F								
400	G3/4	G1/2	41	16	32	16	32	20	RI 3/4 M X 1/2 F								
400	G3/4	G1	51	16	41	16	32	24.5	RI 3/4 M X 1 F								
250	G3/4	G1 1/4	55	16	55	16	32	26.5	RI 3/4 M X 1 1/4 F								
250	G3/4	G1 1/2	57	16	60	16	32	28.5	RI 3/4 M X 1 1/2 F								
400	G1	G3/4	47	18	41	20	39	22	RI 1 M X 3/4 F								
250	G1	G1 1/4	57	18	55	20	39	26.5	RI 1 M X 1 1/4 F								
250	G1	G1 1/2	59	18	60	20	39	28.5	RI 1 M X 1 1/2 F								
250 bar	G1 1/4	G1	52	20	50	2	49	24.5	RI 1 1/4 M X 1 F								
									G1 1/4	G1 1/2	60	20	60	25	49	28.5	RI 1 1/4 M X 1 1/2 F
250	G1 1/2	G1 1/4	58	22	55	32	55	26.5	RI 1 1/2 M X 1 1/4 F								
									G2	G 1 1/2	62	24	70	40	69	28.5	RI 2 M X 1 1/2 F
																	G 2 1/2



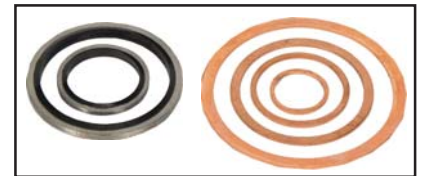
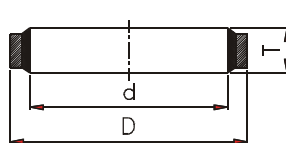
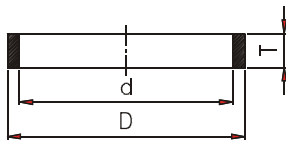


PRESSURE GAUGE COUPLING

series	Tube OD	Female Thread	S1	S2	L1	t3	h3	d5	Part No.
L	6	1/8	17	14	36	11	3	3	MAV 6L x 1/8
	6	1/4	19	14	38	13	4	3.5	MAV 6L x 1/4
NP 250	8	1/4	19	17	38	13	4	3.5	MAV 8L x 1/4
	8	3/8	22	17	38	15	4	4.5	MAV 8L x 3/8
	10	3/8	22	19	39.5	15	4	4.5	MAV 10L x 3/8
	10	1/2	27	19	40.5	19	5	5.5	MAV 10L x 1/2
	12	3/8	22	22	39.5	15	4	4.5	MAV 12L x 3/8
	12	1/2	27	22	40.5	19	5	5.5	MAV 12L x 1/2
S	6	1/4	19	17	40	13	4	3.5	MAV 6 S x 1/4
	6	3/8	22	17	42	15	4	4.5	MAV 6 S x 3/8
Havey seires	8	1/4	19	19	40	13	4	3.5	MAV 8 S x 1/4
	8	3/8	22	19	42	15	4	4.5	MAV 8 S x 3/8
	8	1/2	27	19	45	19	5	5.5	MAV 8 S x 1/2
NP 630	10	1/4	19	22	40	13	4	3.5	MAV 10 S x 1/4
	10	3/8	22	22	42	15	4	4.5	MAV 10 S x 3/8
	10	1/2	27	22	45	19	5	5.5	MAV 10 S x 1/2
	12	1/4	19	24	40	13	4	3.5	MAV 12 S x 1/4
	12	3/8	22	24	40	13	4	4.5	MAV 12 S x 3/8
	12	1/2	27	24	45	19	5	5.5	MAV 12 S x 1/2



SEALS



THREADS		COPPER WASHERS			DOWTY SEALS			Part No.
B.S.P	Metric	d	D	T	d	D	T	Part No.
1/8"	M10	9.9	13.8	1.5	11.6	17.3	3.2	
	M12				13.7	22	3.2	
1/4"	M14	13.8	18	1.5	14	20.6	3.9	
	M16				16.7	24	3.9	
3/8"		17	21.5	1.5	17.5	23.7	3.6	
	M18				18.7	26	3.6	
	M20				20.7	28	3.6	
1/2"	M22	21.2	25.8	1.5	21.5	28.5	3.6	
5/8"	M24	23.4	28	1.8	24.7	31	3.6	
	M26				26.7	35	3.6	
3/4"		26.8	33.3	1.5	27.7	34.8	4.2	
7/8"	M30				31	38.3	4	
1"		33	39.1	2	33.5	42.8	4.8	
	M36				36.7	46	4.8	
1 1/4"	M42	42.3	48.3	2	43.3	52.3	4.8	
1 1/2"	M48	48.7	55	2	48.6	58.3	4.8	
2"	M60	60.2	69.7	1.3	60.8	76.8	6.2	
2 1/2"		75.5	83.8	1.3	76.08	90.3	6.2	

For Ordering specify size e.g. DS M10 or DS 1/8"