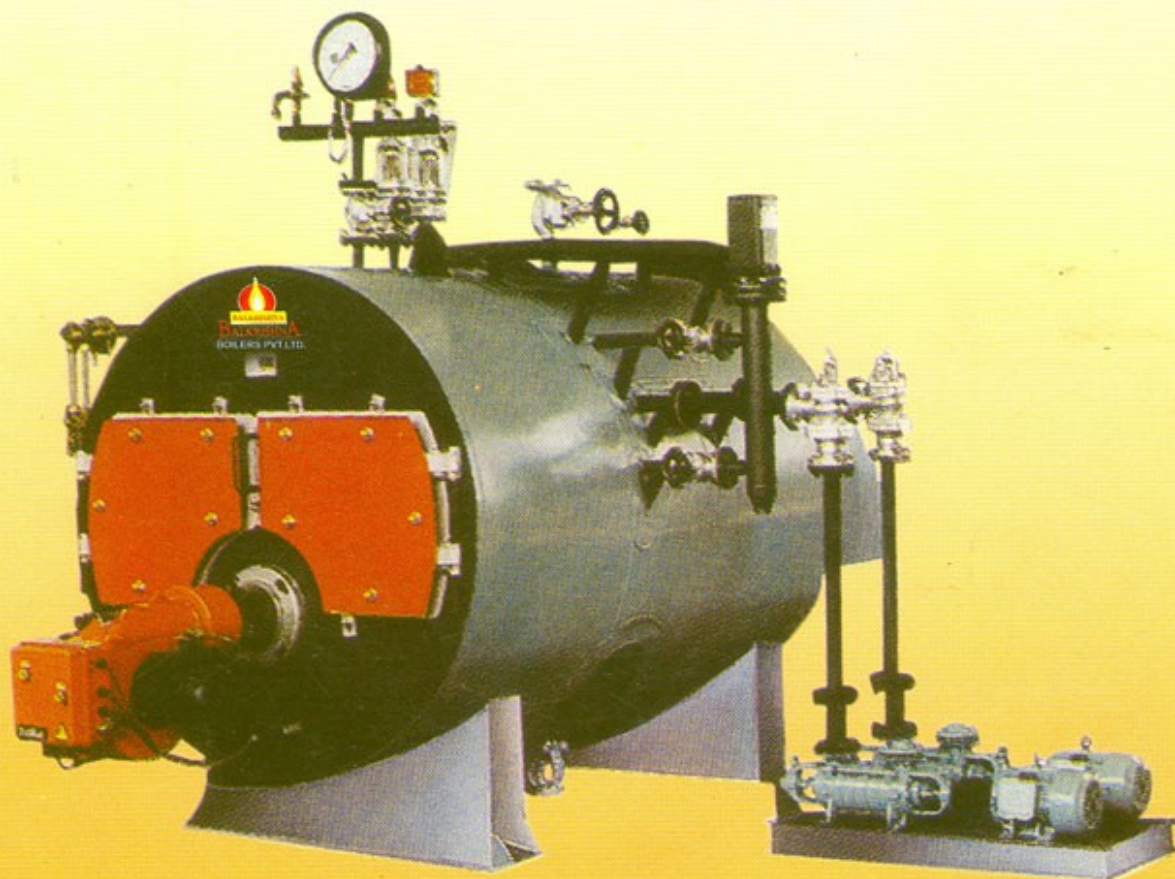


Process Heating Systems



STEAMJET

Packaged 3 Pass, Wet Back,
Smock Tube Type, Steam boiler
Super efficiency and Super Performance

STEAMJET

Oil / Gas / F.O. fired fully wet back boiler



TECHNICAL SPECIFICATION

MODEL	UNIT	BL-SJ-05	BL-SJ-10	BL-SJ-15	BL-SJ-20	BL-SJ-30	BL-SJ-40	BL-SJ-50	BL-SJ-60	BL-SJ-70	BL-SJ-80	BL-SJ-90	BL-SJ-100
Evaporation													
F & A 100° C	Kgs./Hr.	500	1000	1500	2000	3000	4000	5000	6000	7000	8000	9000	10000
Rating	M ²	15	30	45	60	90	120	150	180	210	240	270	300
Working Press	Kg/cm ²	←----- 10.54 kg/cm ² to 2100 kg/cm ² ----->											
Eff. on NCV	%	←----- 87% ± 2% ----->											
Fuel Consum. LDO	Kgs/Hr.	30.42	60.85	91.27	121.7	182.55	243.4	304.2	365.1	425.95	486.8	557.65	608.5
FO	Kgs/Hr.	32.16	64.32	96.48	128.64	192.96	257.28	321.6	385.92	450.24	514.56	578.8	643.2
Design Code		←----- IBR-1950 ----->											
Feed Pump	HP	3	5	5	7.5	7.5	7.5	7.5	10	12.5	12.5	15	15
Blower Motor	HP	1	1	2	5	7.5	7.5	10	10	15	15	20	25
Fuel Oil Preheater	KW	6	6	9	9	12	15	18	18	21	21	24	24
Fuel Pump	HP	0.5	0.5	1	1	1	1.5	1.5	2	2	2	3	3

Higher ratings Boilers are available request

LDO Net Calorific Value - 10200 Kcal/Kg.

FO Net Calorific Value - 9650 Kcal/Kg.

OUR OTHER RANGES OF STEAM BOILER



Oil/Gas Fired Semi Industrial Boiler

Technical Specification	
CAPACITY :	100 Kg/Hr to 600 Kg/Hr
PRESSURE :	Up to 7 Kg/Cm ²
FUEL :	L.D.O. /F.O. / GAS
FIRING MODE :	AUTOMATIC BURNER SYSTEMS
FURNACE :	INTERNAL FURNACE

Oil/Gas Fired Vertical Coil Type IBR Boiler

Technical Specification	
CAPACITY :	100 Kg/Hr to 1000 Kg/Hr
PRESSURE :	Up to 17.5 Kg/Cm ²
FUEL :	L.D.O. /F.O. / N.GAS / LPG
FIRING MODE :	AUTOMATIC BURNER SYSTEMS
FURNACE :	INTERNAL FURNACE



Electrical Fired Steam Boiler

Technical Specification	
CAPACITY :	12 Kw to 200 Kw
PRESSURE :	Up to 10.54 Kg/Cm ²
FUEL :	Electric Power
FIRING MODE :	AUTOMATIC Ele. Heater Systems
FURNACE :	INTERNAL Heater Systems

Vertical Coil Type SIB Steam Boiler

Technical Specification	
CAPACITY :	50 Kg/Hr to 800 Kg/Hr
PRESSURE :	Up to 7 Kg/Cm ²
FUEL :	L.D.O. / GAS / Diesel
FIRING MODE :	AUTOMATIC PRESSURE JET BURNER SYSTEM
FURNACE :	VERTICAL REVERSE FLAME SYSTEMS



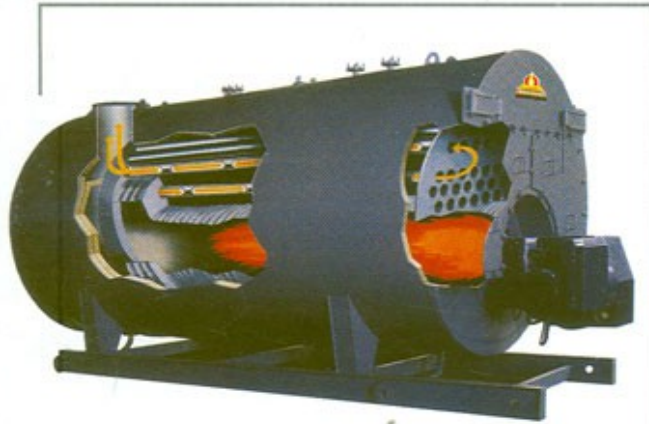
Steametic Mobile Steam Boiler

Technical Specification	
CAPACITY :	50 Kg to 100 Kg/Hr
PRESSURE :	Up to 10 Kg/Cm ²
FUEL :	LDO / Gas / Diesel
FIRING MODE :	Automatic Pressure Set Burner
FURNACE :	Internal Three Pass Coil Type

AQUATHERM

Pressurised or Non Pressurised Hot Water Boiler

Fully Automatic Smock tube & Water tube Type



Fully Automatic Smock tube Type
Fully Wet back, Three Pass H.W.B.



Fully Automatic
Coil Type, Three Pass H.W.B.

HOT WATER BOILER SPECIFICATION

MODEL	UNIT	BL-AT-10	BL-AT-20	BL-AT-30	BL-AT-40	BL-AT-60	BL-AT-100	BL-AT-150	BL-AT-200
Boiler output	kcal/hr	100000	200000	300000	400000	600000	1000000	1500000	2000000
Nominal working pressure	kg/cm ²	←-----10.54/kg/cm ² -----→							
Outlet water temperature	°C	95	95	95	95	95	95	95	95
Return water temperature	°C	70	70	70	70	70	70	70	70
C W P Pump flow	m ³ /h	6	10	18	26	30	60	90	120
Water outlet / return diameter	mm	40	50	50	65	75	100	125	150
C.W. Pump	HP	3	5	5	10	12.5	15	25	30
Stack diameter	mm	150	150	200	200	300	400	450	575
Water Holding	Ltr	65	75	250	287	375	455	900	1460
Approximate Fuel consumption									
L D O	kg/h	11	22	33	44	66	110	165	220
Natural Gas	kg/h	14	28	42	55	83	138	207	276
Heavy oil (F.O.)	kg/h	0	0	0	48	71	119	179	238
Efficiency on NCV		87% ± 2%							



ISO 9001 - 2000 Certified Co.

BALKRISHNA BOILERS PVT. LTD.

Plot No. 78/8, Phase I, GIDC, Vatva. Opp. Abad Bread, Ahmedabad- 382445

Phone : (O) 079-25894701, Fax : (079) 25894702

Manish Patel - 98250 24450, Paresh Patel - 98980 11090

E- mail : info@balkrishn.com, URL : www.balkrishn.com

Note: In view of our constant endeavour to improve the quality of our products, we reserve the right to alter or change specifications without prior notice.