

SIDDHI ENGINEERING CO.

SPECIAL ENGINEERING COMPONENTS

3/10, Guru Darshan, Jagdusha Nagar, Ghatkopar (W). Mumbai – 400 086. INDIA.

Telefax: +91 22 251 49450

Cell: +91 93240 49450

E-mail: siddhiengineer@yahoo.com

C.S.T No.: 27070286981C w.e.f. 01/04/2006

TIN No.: 27070286981V w.e.f. 01/04/2006

Introduction to Foot Operated Hydraulic Pump:



**Correspondence Address: No. 21, Ground Floor, Girdhar Nagar, R B Kadam Marg (Jivdaya Lane),
Ghatkopar (W), Mumbai-400086.**

“Service Driven Organization”

SIDDHI ENGINEERING CO.

SPECIAL ENGINEERING COMPONENTS

3/10, Guru Darshan, Jagdusha Nagar, Ghatkopar (W). Mumbai – 400 086. INDIA.

Telefax: +91 22 251 49450

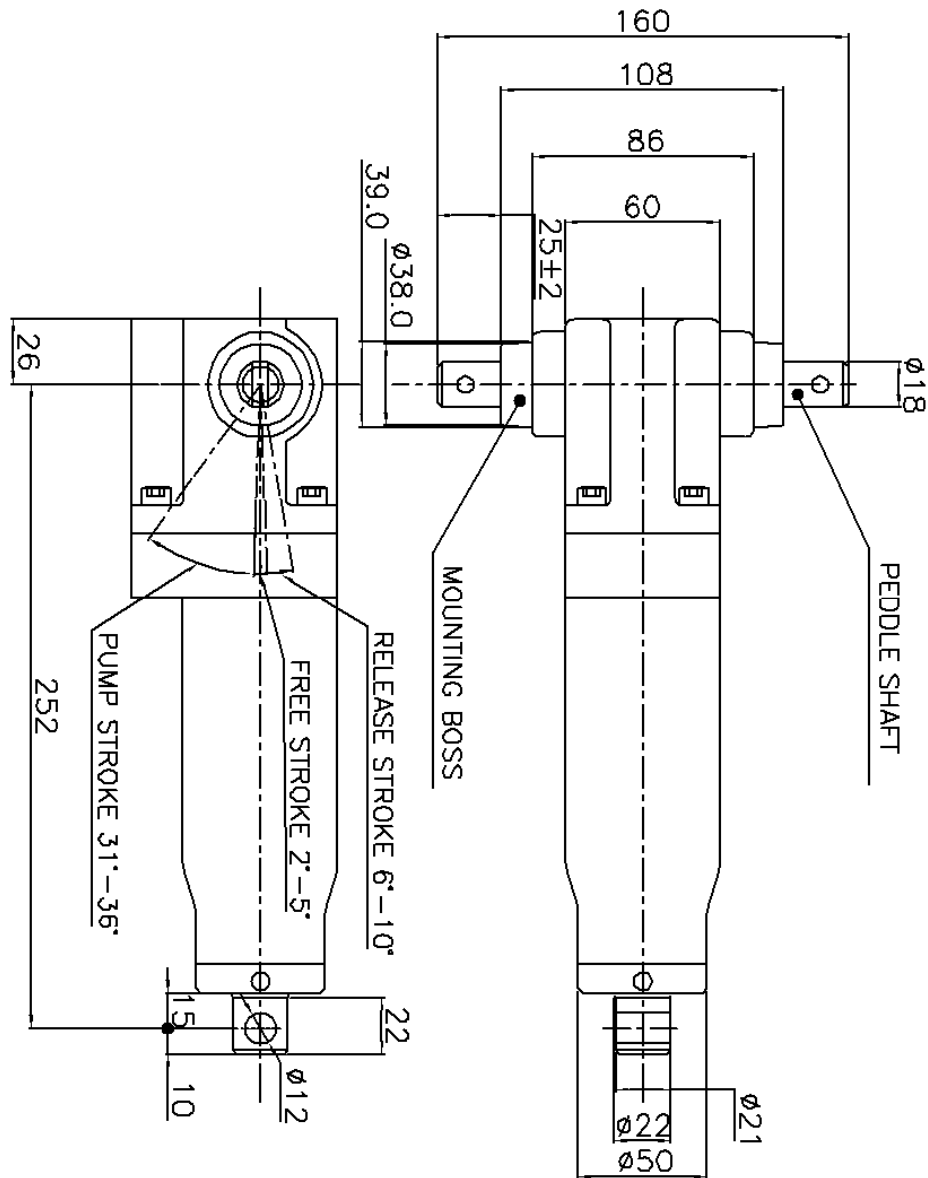
Cell: +91 93240 49450

E-mail: siddhic@yahoo.com

C.S.T No.: 27070286981C w.e.f. 01/04/2006

TIN No.: 27070286981V w.e.f. 01/04/2006

MOUNTING BOSS: IT HAS DRAFT ANGLE. DIM AT START IS 38MM & AT END IS 39MM



UNSPECIFIED TOLERANCES AS PER IS 2102:

1000 UP TO 2000	+ 1.20
400 UP TO 1000	+ 0.80
120 UP TO 400	+ 0.50
30 UP TO 120	+ 0.30
6 UP TO 30	+ 0.20
0.5 UP TO 6	+ 0.10

Correspondence Address: No. 21, Ground Floor, Girdhar Nagar, R B Kadam Marg (Jivdaya Lane), Ghatkopar (W), Mumbai-400086.

“Service Driven Organization”

SIDDHI ENGINEERING CO.

SPECIAL ENGINEERING COMPONENTS

3/10, Guru Darshan, Jagdusha Nagar, Ghatkopar (W). Mumbai – 400 086. INDIA.

Telefax: +91 22 251 49450

Cell: +91 93240 49450

E-mail: siddhi@yaho.com

C.S.T No.: 27070286981C w.e.f. 01/04/2006

TIN No.: 27070286981V w.e.f. 01/04/2006

Foot operated Hydraulic Pump is a highly reliable & self contained hydraulic actuator. It is a very compact & maintenance free unit. The pump, cylinder, valves & reservoir are combined into one unit.

Foot operated Hydraulic Pump comes with a pressure relief valve which avoids building of excessive pressure thus ensuring safety. Also it has built in release valve to ensure smooth lowering.

It is easy to install & built for long life. **It comes with a Replacement Guarantee of 12 months against any manufacturing defects.**

Operation:

It is equipped with pedal shaft to which the pumping lever is to be fitted. (*Pumping lever or pedal is not supplied by us*). Pumping is to be carried out as shown in the above drawing. The fitted lever is to be pressed downwards by foot & it comes to its original position after releasing pressure applied by foot. In every stroke pump comes out by 5 to 6 mm & 26 to 28 strokes are required for a pump to extend fully. While releasing, the pumping lever is to be pressed in reverse direction to that of pumping & force is to be kept applied to lower to desired level or till its bottom most position is achieved.

Applications:

Foot Operated Hydraulic Pump has found Various applications and designers have successfully applied for following applications:

- (a) Height adjustment for **various medical equipments & hospital furnitures** like trolleys, physiotherapy tables, operation tables, recovery trolley etc.
- (b) Height adjustment of Saloons & Beauty Parlour chairs.
- (c) Height adjustment in assembly lines.

Features & benefits:

1. Compact & self contained design
2. Quite & smooth operation
3. Maintenance Free
4. Easy to install
5. Maximum lifting capacity 300Kg.
6. Stroke Length: 140.00 mm.
7. Light Weight Aluminium Die Cast Body.
8. Colours available: Pearl White & Metallic Grey.

Kindly let us know in case of any technical queries. It will be our pleasure to clear the same.

Best regards,

Gaurang P. Bavishi

Proprietor

Mobile No.: +91 9324049450

Correspondence Address: No. 21, Ground Floor, Girdhar Nagar, R B Kadam Marg (Jivdaya Lane), Ghatkopar (W), Mumbai-400086.

“Service Driven Organization”