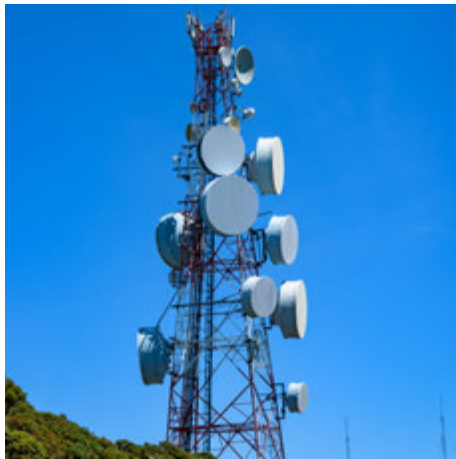
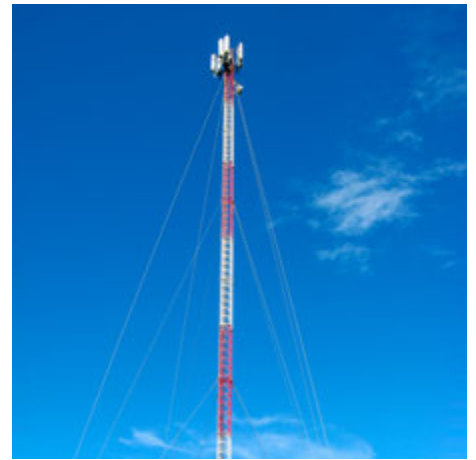


PRODUCT RANGE

TOWERS AND STEEL STRUCTURES

Cell-Com since its incorporation in 2003, has been dealing in quality steel structures, both Galvanized and Non-Galvanized.

We carry an in-depth experience of manufacturing steel structures in various industrial sectors, viz., Telecom, Power Transmission & Distribution, Power Plants, Hydro Power, Oil & Gas, Chemical Plants, Sugar Industries etc.



AN ISO 9001:2015, ISO 14001:2015 &
ISO 45001:2018 CERTIFIED COMPANY



www.cellcom.in



INDEX

- TOWERS AND STEEL STRUCTURES
- TRANSMISSION LINE TOWERS & SUBSTATION STRUCTURES
- MISCELLANEOUS STRUCTURES



TELECOM TOWERS & ACCESSORIES

Cellcom has been engaged in the field of manufacturing Telecom Towers since its inception. Cellcom provides all accessories required in the installation of a telecom site like Antenna Mounts, Cable Trays, BTS Cage etc.

We have a well established track record with most of the recognized telecom operators and Infrastructure providers within India and abroad. having successfully executed more than 20,000 telecom tower sites.

TOWERS

- Lattice/Tubular/Hybrid type Ground Base Towers (GBT) up to 80 meters.
- Fast Track Towers(FTT)/ Rapid Deployment Unit (RDU) upto 45m height for three operator applications.
- Roof Top Towers (RTT) and Delta type tower structures up to 24 meters height.
- Penetrating & Non-penetrating structures for supporting satellite/VSAT antenna.



MOUNTINGS AND ACCESSORIES

- Mounts : Diverse Antenna mounting structure; viz; Dual Pole Gantry, GSM and MW antenna mounts, Tri-Pole mounts, Universal Flexible couplings.
- Floor Pole mounts (self supporting type), and wall mounted pole mounts.
- Cable Trays.

TELECOM & SMART POLES

- Flanged Type Monopole Tower Structures up to 30 meters height.
- Lighting poles like swage pole, circular pole, etc.
- Pole clamps and accessories.



TRANSMISSION LINE TOWERS AND SUBSTATION STRUCTURES

Cellcom is approved from PGCIL (Power Grid Corporation of India Limited) and various state electricity boards for supply of Transmission Line Towers and Sub-Station Structures.

TRANSMISSION LINE TOWERS

- Transmission & Distribution Towers up to 400 KV.
- Approved EPC contractor with UPPTCL (Uttar Pradesh Power Transmission Corporation Limited).
- Transmission Line Accessories.



SUBSTATION STRUCTURES

- Lattice and Tubular types structures for Sub-Stations.
- Miscellaneous structures for hydro electric power generation projects viz., inspection platform runner lifting arrangement, runner trolley, balancing weights for generator and turbine rotors, rotor jacking device etc.

ANCHOR/ FOUNDATION BOLTS

Galvanized and non-galvanized foundation bolts from 12mm to 100mm diameter & upto 3 meter in length with BSW, metric or UNC threads & conforming to IS-1367 clause 4.6 & 5.6 for Telecom Towers, Solar structures and Power Plants on high precision machines viz; thread rolling machines & chasers.

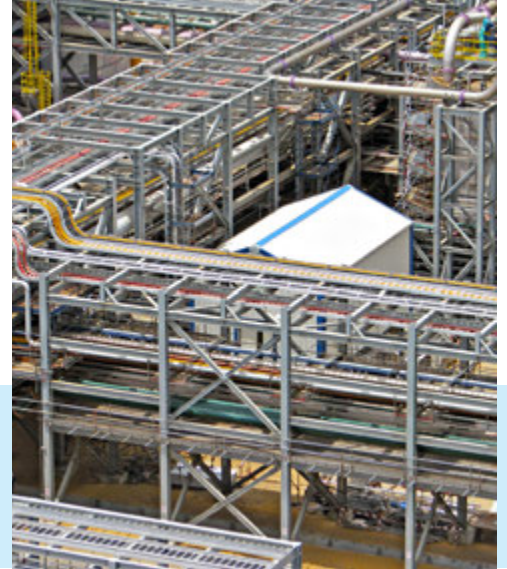


MISCELLANEOUS STRUCTURES

Cellcom has diversified and evolved its facilities to manufacture various heavy steel and material handling structures.

GENERAL STRUCTURES

- Our portfolio of activities includes a wide range of general steel structures:
 - Pipe Rack Structures for oil & gas industries
 - Girder, Gantries and Trusses for pre-fabricated Sheds and building structures,
 - Cage ladder, walkways and platform structures.
- Supply of galvanized structure (400MT) for rail siding unloading gantry in IOCL is one of our unique credentials.



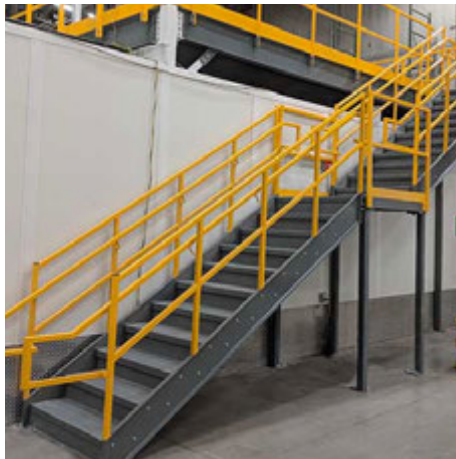
TECHNOLOGICAL STRUCTURES

- Equipment tower structure
- Material handling conveying structures
- Crusher house structures
- Crane gantries
- Hopper & Chutes
- Motor & Gear Box base frames

HANDRAIL

- Galvanized, non-galvanized and painted steel pipe handrails in circular/square section heavy gauge tubular construction to meet fall protection requirements as per
 - OSHA:1910.23:guarding floors & wall openings & holes
 - Offered in I.B.C. & ADA compliant styles.
 - As per customer layout/drawings
- Modular and ball type patterns.
- The material grade used is IS-1239 (Medium) or IS-1161 YST 240 as per customer requirement.





CELL-COM TELESERVICES PVT. LTD.

A-52, UPSIDC Industrial Area, Sikandrabad, Distt. Bulandshahar (U.P.) INDIA - 203205

Phone: +91 981 03103 27 / +91 987 33457 02 / +91 981 03711 38

Email: commercial@cellcom.in / cell_com@cellcom.in

www.cellcom.in