



SYDLER
ELECTRONICS PVT. LTD.

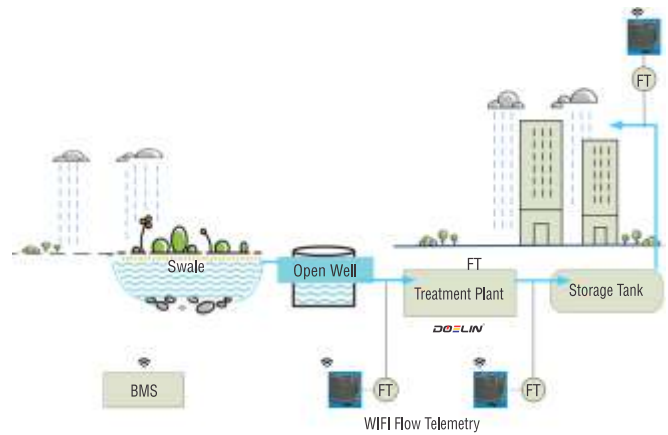
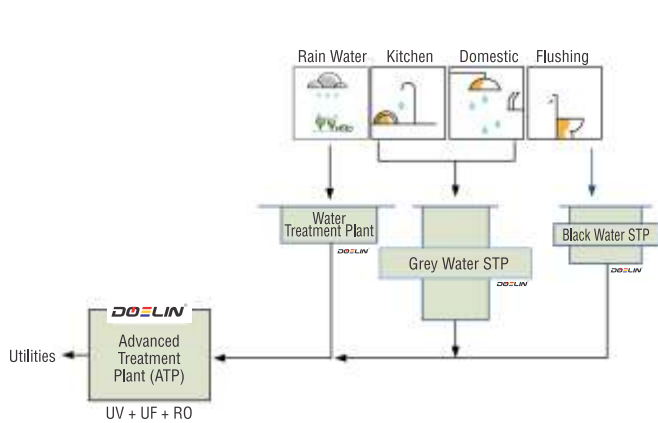
Waste Water Management & Control



Innovating
Power of Control

DOELIN[®]

WASTE & SEWAGE WATER MANAGEMENT AND CONTROL SYSTEMS

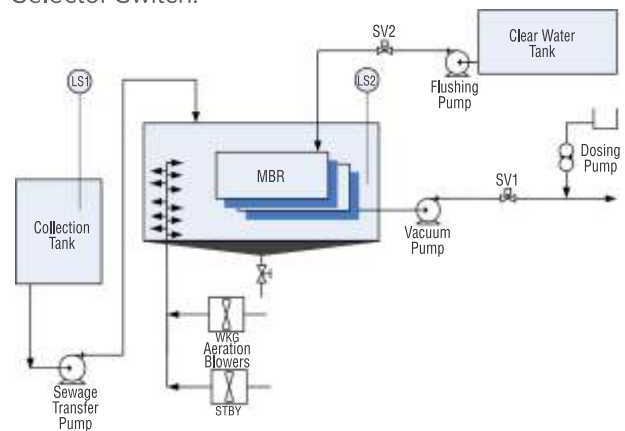


OPERATIONAL FEATURES :

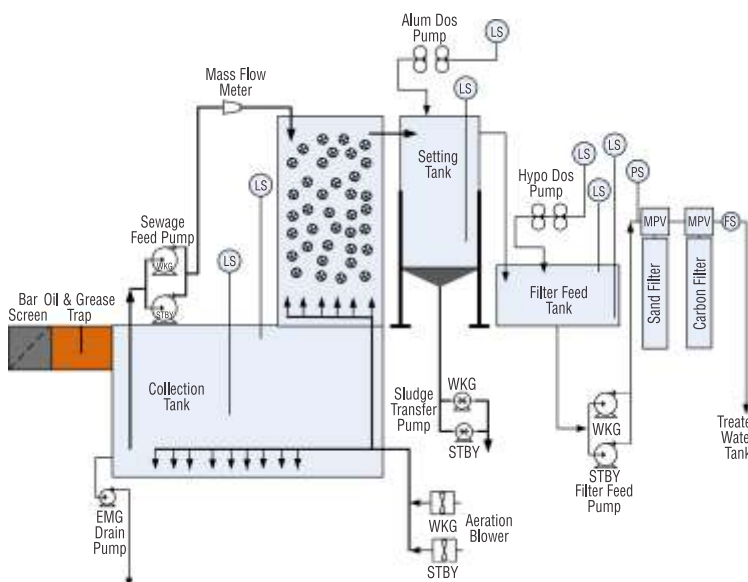
- Microcontroller holds the Process Sequence Firmware
- Much Lesser Internal Wiring Due to Data Communication for Input Output Cards
- Process Specific Timers, Process Parameters and Calibration Freely Settable
- Level and Time Based Operations Selectable
- Password Protected Settings for Electrical Protection Parameters
- Sequential Operation of Working and Stand by Devices
- Working and Stand by Devices can be set in Maintenance
- Star Delta Mode for Higher Capacity Blowers & Pumps
- Power Switch-Gear Offered with Software Based Protection as well as Thermal Relay Protection
- Semi Auto Mode Operation Through Soft Keys
- Manual Operation Through Control Panel Switches
- Remote Monitoring through Mobile Apps & Dashboard

HARDWARE :

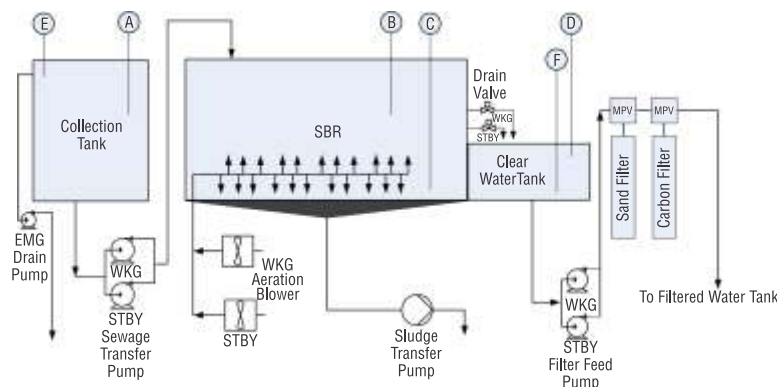
- State of the Art Microcontroller Based Design
- 128 X 64 Graphic LCD Display
- Dynamic Graphic Process Display
- Soft-Key / Touch Screen Process Interface
- Power Switch-Gear Control Part of the Control Panel
- Supports Remote Inputs and Outputs
- Supports Remote Process Instrumentation
- Offers Fully Automatic, Semi – Automatic and Fully Manual Modes of Operation by Simply Operating a Selector Switch.



STP-MBR AUTOMATION



STP-MBBR AUTOMATION



STP-SBR AUTOMATION

DOELIN MICRO STP PANEL FOR STP CAPACITY RANGING FROM 1 KLD TO 20 KLD

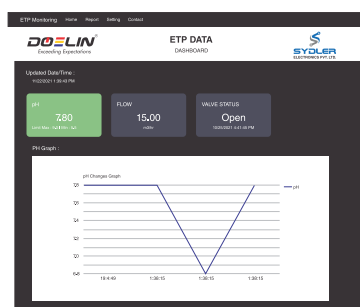
- Air Blower 1 Working + 1 Stand by
- Transfer Pump : 1 Working

Features :

- Regular Mode : Blowers will Interchange at Defined Time Periods
- Holiday Mode : Blower 1 and Blower 2 Operate at Pre-defined Intervals
- A Blower can be by Passed for Maintenance
- Level Control for Transfer Pump
- Input for Air Flow Sensor
- Service Date Reminder
- Display of Currents and Faults for Blower / Pump

Inputs :

- Power : 230Vac, 50Hz. (415Vac, 3 Phase-Optional)
- Press : Switch for Blower Air
- Level (Floaty) Switch to Control Transfer Pump



DASHBOARD-ETP

ETP Monitoring Home Report Setting Contact					
From Date : 10/01/2021		To Date : 11/02/2021		GET REPORT	
DATE TIME	pH	7.10	7.10	pH	1635144729
10/25/2021 12:22:39 PM	Flow	0.00	0.00	m3/hr	1635144729
10/25/2021 12:26:53 PM	pH	7.10	7.10	pH	1635145009
10/25/2021 12:26:53 PM	Flow	0.00	0.00	m3/hr	1365145009
10/25/2021 12:27:02 PM	pH	7.10	7.10	pH	1365145019
10/25/2021 12:27:02 PM	Flow	0.00	0.00	m3/hr	1365145019
10/25/2021 12:27:06 PM	pH	7.10	7.10	pH	1365145024
10/25/2021 12:27:06 PM	Flow	0.00	0.00	m3/hr	1365145024
10/25/2021 12:27:50 PM	pH	7.10	7.10	pH	1365145096
10/25/2021 12:27:50 PM	Flow	0.00	0.00	m3/hr	1365145096
10/25/2021 12:28:38 PM	pH	7.10	7.10	pH	1365145115
10/25/2021 12:28:38 PM	Flow	0.00	0.00	m3/hr	1365145115
10/25/2021 12:28:54 PM	pH	7.10	7.10	pH	1365145131
10/25/2021 12:28:54 PM	Flow	0.00	0.00	m3/hr	1365145131

REPORT-ETP

DOELIN ETP-RTL _001 Remote Data Logger is designed to read the online pH and Flow data (Rate and Cumulative Volume) of ETP Outlet continuously and upload it via a data link that can be connected to the Pollution Board server in a predefined format on GPRS.

Limit Values for the parameter/s can be set. Digital outputs have been provided to activate external devices, in response to the parameter values measured out of Set Limit.

Digital Input is provided to Monitor any binary state that is deemed necessary.

It provides for pH and Flow Sensors as direct connection as well as connection for third party pH and Flow Transmitters 4-20mA).

An RS485 and Ethernet connection can be optionally offered for instrumentation.

Battery back up is optionally offered to monitor data in case any of power failure.

Customised ETP / STP Control Solutions Offered

Our Other Systems :

- Water Level Controllers
- RO and UF Water Treatment Controllers
- Automatic Water Dispensing Systems
- Agriculture Water & Fertigation Control and Scheduling Systems
- Solar Pump Controllers
- Smart Pump Controllers with GSM / GPRS connectivity
- Servo Voltage Stabilizers

ABOUT US

The brainchild of two Electronic Engineering graduates Mr. Arinjay Dodal and Mr. Nishikant Jain, Sydlers Electronics Pvt. Ltd. (formerly known as Dodal Electro Instruments) was founded in the year 1988 with the sole purpose of bringing novel resources and technologies in the rapidly expanding fields of Electronics and Instrumentation.

With the sole purpose of creating user-friendly solutions, all the products are manufactured by adapting the state of art technology and are branded under the name - **DOELIN**

Sydlers is one of the leading manufacturers with complete range of motor starters and has a Pan India presence through a well-knit dealer network.

The team of trained service technicians addresses the needs of the Domestic, Agriculture and Industrial sectors and provides them their precise solutions with good quality products to the market at the right value. Sydlers provides an excellent service to the dealer network and is also involved in arranging training programs to update the vast network of service providers.

The marketing and the sales team ensures that they cover the entire country and leave no stone unturned to promote the sales of the products. The team goes the extra mile to assist the dealers in various promotional activities. It is our fervent belief that our dealers are an integral part of our family and their well being is very close to our heart.

Conclusively, **DOELIN** systems feature an innovative modular design that has a low initial cost, zero downtime and exceptional reliability, making them extremely easy to use and service.



Vision

Our Vision is to be a World-class organization in the Electronic segment. We will be a one-stop solution and a preferred destination for Customers. We will be innovative in our field, bringing ease to all human beings. We are part of Green evolution hence the Environment, Health & Safety of everybody in the Supply chain is our first aim.



Mission

To achieve customer satisfaction through excellence in designing, supply chain management and integrated business processes. We are a results-oriented organization that builds value for our customers through our employees by creating an atmosphere of optimism, teamwork, creativity, resourcefulness and dealing with all people in an open and ethical manner. Bring continuously new exciting innovations and Value for Money products to the market. Continue to improve design & processes to achieve the highest product quality.



Values

Sydlers has core values which are our fundamental beliefs upon which our business and behavior are based. They are guiding principals that our business use to manage its internal affairs and external relationship with customers and stakeholders.



Head Office :

S. No. 157/2A/3, Near Sai Petrol Pump,
Katraj-Dehu Highway, Tathwade,
PUNE - 411 033, Maharashtra.
Board Line : +91 7888077911
Customer Care : +91 7888077933 / 944

Factory :

L-24, MIDC, Waluj,
Aurangabad - 431136
Maharashtra.
Board Line : +91 7888077922

Channel Partner :



info@sydlerelectro.com | www.sydlerelectro.com



DOELIN : android app available on play store