

LOKOZO

SOLAR STREET & MINI MAST LIGHTING



MAKE IN INDIA



LOKOZO
TECHNOLOGY FOR PEOPLE

SOLAR STREET LIGHT

As the sun peeks over the horizon, it brings with it endless possibilities. It brings with it clean, green and sustainable energy.

With global warming becoming a real threat, the sun presents a renewable source of energy that does not cause pollution. For these reasons, solar energy is gaining momentum globally.

This solar revolution is also fast extending to outdoor lighting. Solar powered Street lighting systems are fast replacing the conventional grid based lighting.

Apart from being power guzzlers, conventional street lighting systems have other disadvantages too. They

- Require expensive and time consuming grid layout
- Cause blackout during power outages
- Have high maintenance costs



GENTRIX-S
TWO IN ONE SOLAR
STREET LIGHT



GENTRIX-I
ALL IN ONE SOLAR
STREET LIGHT



LYRA-S
STANDALONE
SOLAR STREET
LIGHT

GENTRIX-S

GTX-S

MADE IN INDIA

TWO IN ONE SOLAR STREET LIGHT

UNIQUE FEATURES:

- 20 % Higher Capacity Mono Solar PV Module as compared to competitions
- Bigger LiFePO4/LI-ION Battery for longer duration
- Inbuilt BMS for Battery Safety & Enhanced battery life.
- Customized Optical Lens for Light distribution
- Specially designed for Indian climatic conditions
- Theft Retardant system
- Higher System Lumen Output > 125 Lm/W
- LED life Span > 50000 hrs.
- Customized Lens for achieving light distribution as per standard
- PIR Motion Sensor for Automatic brightening & dimming
- Mono Crystalline Solar PV Module
- Higher efficiency > 17% for faster charging
- Anti Reflective Glass Coating
- MPPT Solar Charge Controller(SCC)for high performance
- High grade LiFePO4/ LI-ION battery
- BIS Approved Cells
- Operating temperature -20°to + 55°
- Battery 2000 life cycle : > 5yrs life
- Faster Charging
- Automatic dusk to dawn operation
- Easy to Store, Install, Dismount & Transport
- Maintenance -free, just install and forget for 5-6 years life



ADVANTAGES OVER STANDARD SOLAR STREETLIGHT

Description	Standalone Solar Street Light	Two In One Solar Street Light
Battery Shelf Life	3 Months	6 Months
No Of Components	10 Nos	2 Nos
Wiring Required	Yes	No
Wall Mounting	No	Yes
Installation On Existing Pole	No	Yes
Safety Of The Battery	Acid Leakage And Damage During Transportation	Safe And Easy To Transport
Transportation Cost	Approx. 110Kg per system	Approx. 8 to 20 Kg per System
Installation Cost	Approx. 4000 per system	Approx. 1500 per system
Maintenance Cost	For 5 years- Approx. Rs. 10000/-	Maintenance free

Model	GTX-S6	GTX-S9	GTX-S12	GTX-S15	GTX-S18	GTX-S20	GTX-S25	GTX-S30
Solar Panel	20 W	30 W	40 W	40 W	40 W	50 W	60 W	60 W
LED Power	6 W	9 W	12 W	15 W	18 W	20 W	25 W	30 W
Battery capacity	5.2 Ah	7.5 Ah	10 Ah	12.5 Ah	12.5 Ah	15 Ah	17.5 Ah	20 Ah
Battery Voltage	14.8V	14.8V	14.8V	14.8V	14.8V	14.8V	14.8V	14.8V
Lumen (LM)	>945lm	>1150lm	>1500lm	>2000lm	>2300lm	>2650lm	>3120lm	>3800lm
LED life time	50000hr	50000hr	50000hr	50000hr	50000hr	50000hr	50000hr	50000hr
Charging time	1 day	1 day	1 day	1 day	1 day	1 day	1 day	1 day
Autonomy	1 days	1 days	1 days	1 days	1 days	1 days	1 days	1 days
CCT (K)	5700K	5700K	5700K	5700K	5700K	5700K	5700K	5700K
Mounting height	3 - 5m	3 - 5m	3 - 5m	3 - 5m	5 - 6m	5 - 6m	5 - 6m	5 - 6m
Working Temp.	-10+55C	-10+55C	-10+55C	-10+55C	-10+55C	-10+55C	-10+55C	-10+55C
Dimension (mm)	450x382x55	450x382x55	656x382x55	791x382x55	791x382x55	1026x382x55	1230x382x55	1320x382x55
Net weight	5.0 Kg	5.4 Kg	6.8 Kg	7.5 Kg	9.1 Kg	9.5 Kg	10.5 Kg	11 Kg

GENTRIX-I

GTX-I

MADE IN INDIA

ALL IN ONE SOLAR STREET LIGHT

UNIQUE FEATURES:

- 20 % Higher Capacity Mono Solar PV Module as compared to competitions
- Bigger LiFePO4/LI-ION Battery for longer duration
- Inbuilt BMS for Battery Safety & Enhanced battery life.
- Customized Optical Lens for Light distribution
- Specially designed for Indian climatic conditions
- Theft Retardant system
- Higher System Lumen Output > 125 Lm/W
- LED life Span > 50000 hrs.
- Customized Lens for achieving light distribution as per standard
- PIR Motion Sensor for Automatic brightening & dimming
- Mono Crystalline Solar PV Module
- Higher efficiency > 17% for faster charging
- Anti Reflective Glass Coating
- MPPT Solar Charge Controller(SCC)for high performance
- High grade LiFePO4/ LI-ION battery
- BIS Approved Cells
- Operating temperature -20°to + 55°
- Battery 2000 life cycle : > 5yrs life
- Faster Charging
- Automatic dusk to dawn operation
- Easy to Store, Install, Dismount & Transport
- Maintenance -free, just install and forget for 5-6 years life



ADVANTAGES OVER STANDARD SOLAR STREETLIGHT

Description	Standalone Solar Street Light	Two In One Solar Street Light
Battery Shelf Life	3 Months	6 Months
No Of Components	10 Nos	1 Nos
Wiring Required	Yes	No
Wall Mounting	No	Yes
Installation On Existing Pole	No	Yes
Safety Of The Battery	Acid Leakage And Damage During Transportation	Safe And Easy To Transport
Transportation Cost	Approx. 110Kg per system	Approx. 8 to 20 Kg per System
Installation Cost	Approx. 4000 per system	Approx. 1500 per system
Maintenance Cost	For 5 years- Approx. Rs. 10000/-	Maintenance free

Model	GTX-I6	GTX-I9	GTX-I12	GTX-I15	GTX-I18	GTX-I20	GTX-I25	GTX-I30
Solar Panel	20 W	20 W	30 W	40 W	40 W	50 W	60 W	70 W
LED Power	6 W	9 W	12 W	15 W	18 W	20 W	25 W	30 W
Battery capacity	5.2 Ah	7.5 Ah	10 Ah	12.5 Ah	12.5 Ah	15 Ah	17.5 Ah	20 Ah
Battery Voltage	14.8V	14.8V	14.8V	14.8V	14.8V	14.8V	14.8V	14.8V
Lumen (LM)	>945lm	>1150lm	>1500lm	>2000lm	>2300lm	>2650lm	>3120lm	>3800lm
LED life time	50000hr	50000hr	50000hr	50000hr	50000hr	50000hr	50000hr	50000hr
Charging time	1 day	1 day	1 day	1 day	1 day	1 day	1 day	1 day
Autonomy	2 days	2 days	2 days	2 days	2 days	2 days	2 days	2 days
CCT (K)	5700K	5700K	5700K	5700K	5700K	5700K	5700K	5700K
Mounting height	3 - 5m	3 - 5m	3 - 5m	3 - 5m	5 - 6m	5 - 6m	5 - 6m	5 - 6m
Working Temp.	-10+55C	-10+55C	-10+55C	-10+55C	-10+55C	-10+55C	-10+55C	-10+55C
Dimension (mm)	450x382x40	450x382x50	656x382x40	791x382x40	791x382x40	1026x382x40	1230x382x40	1320x382x40
Net weight	8.0 Kg	8.4 Kg	9.0 Kg	11.0 Kg	11.5 Kg	16.5 Kg	18.5 Kg	19 Kg

LYRA-S

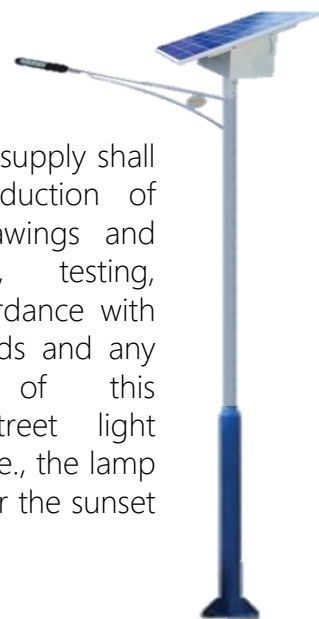
STANDALONE SOLAR STREET LIGHT

The solar street lighting system basically consists of:

- Solar photovoltaic Module
- Luminaire/LED street light
- Low maintenance battery
- Pole and solar panel bracket
- Battery box
- Interconnecting cables

The solar photovoltaic module is fixed firmly on top of the pole with suitable tilt and inclination so as to receive maximum sunlight throughout the day. The solar photovoltaic module thus produces suitable voltage and current, which is used to charge the battery inside the battery box. This energy stored in the battery is used to light up the LED which is housed inside the luminaire during night time. The charge controller protects the battery from over charge and deep discharge. The Solar photovoltaic module, led street lamp and the battery box are fixed on to the Pole and are interconnected through the cables. The solar street light operates in the stand alone mode.

The solar street light scope of supply shall consist of the design, production of materials, manufacturing, drawings and data, assembly, painting, testing, inspection and all in accordance with applicable codes and standards and any additional requirements of this specification, the Solar street light operates from Dusk to Dawn i.e., the lamp automatically switches ON after the sunset and switches OFF after sunrise.



Model	LED Power	Autonomy	Pole Height	Battery Capacity	Solar Panel
	(Watt)	No of Days	(Meter)	(Ah)	(Wp)
LYRA-S-9W	9	2	4.5	40	40
LYRA-S-12W	12	2	4.5	40	40
LYRA-S-15W	15	2	4.5	40	40
LYRA-S-20W	20	2	4.5	40	40
LYRA-S-24W	24	2	4.5	40	40
LYRA-S-30W	30	2	5	65	75
LYRA-S-40W	40	2	6	75	80
LYRA-S-50W	50	2	6	100	120
LYRA-S-60W	60	2	7	100	120
LYRA-S-80W	80	2	7	120	150
LYRA-S-90W	90	2	8	120	150

VISTA-S

SOLAR FLOOD LIGHT WITH LITHIUM BATTERY

LOKOZO is offering Solar High Mast Light to the customers, to cater to their Area lighting needs. Our experts carry out the designing procedure in accordance with the industry laid parameters and thus, bring forth products imparted with flawless configuration. Easy to maintain and capable of delivering brighter illumination, these lights are in big demand across the country. In addition to the area Lighting, the LED High Mast Light also provides safety and guidance of traffic and provides secure and comfortable surroundings for the travellers. High Mast Lighting plays a vital role in reducing accidents and crimes.



MADE IN INDIA

Model	VISTA-S20	VISTA-S30	VISTA-S-50	VISTA-S60
Solar Panel	50 W	70 W	100 W	120 W
LED Power	20 W	30 W	50 W	60 W
Battery capacity	21 Ah	30 Ah	45 Ah	55 Ah
Lumen (LM)	>2650lm	>3800lm	>5525lm	>7600lm
LED life time	50000hr	50000hr	50000hr	50000hr
Viewing angle	60°	60°	60°	60°
Charging time	1 day	1 day	1 day	1 day
Autonomy	2 days	2 days	2 days	2 days
CCT (K)	5700K	5700K	5700K	5700K
Mounting height	5 - 6m	7 - 9m	7 - 9m	7 - 9m
Working Temp.	-10+55C	-10+55C	-10+55C	-10+55C
Net weight	6 Kg	8 Kg	9.8 Kg	11 Kg



TWO IN ONE SOLAR FLOOD LIGHT



UNIQUE FEATURES:

- 20 % Higher Capacity Mono Solar PV Module as compared to competitions
- Bigger LiFeP04/LI-ION Battery for longer duration
- Inbuilt BMS for Battery Safety & Enhanced battery life.
- Customized Optical Lens for Light distribution
- Specially designed for Indian climatic conditions
- Theft Retardant system
- Higher System Lumen Output > 125 Lm/W
- LED life Span > 50000 hrs.
- Customized Lens for achieving light distribution as per standard
- PIR Motion Sensor for Automatic brightening & dimming
- Mono Crystalline Solar PV Module
- Higher efficiency > 17% for faster charging
- Anti Reflective Glass Coating
- MPPT Solar Charge Controller(SCC)for high performance
- High grade LiFeP04/ LI-ION battery
- BIS Approved Cells
- Battery 2000 life cycle : > 5yrs life
- Faster Charging
- Easy to Store, Install, Dismount & Transport
- Maintenance -free, just install and forget for 5-6 years life
- Automatic on/off control system.
- Automatic dimming control system
- Optional bluetooth communication
- Mppt/pwm both are available
- Optional hybrid connectivity



HLX-S

SOLAR MINI MAST LIGHTING

UNIQUE FEATURES:

- AUTOMATIC ON/OFF CONTROL SYSTEM.
- AUTOMATIC DIMMING CONTROL SYSTEM
- OPTIONAL BLUETOOTH COMMUNICATION
- MPPT/PWM BOTH ARE AVAILABLE
- OPTIONAL HYBRID CONNECTIVITY



157 lm/W IP66 D2D Motion Sensor Dimming

BATTERY

- Battery designed for solar lighting applications.
- Reduced topping up frequency.
- Suitable for frequent cyclic duty.
- Available in Tubular flooded and SMF Version.

POLE

Pole can be supplied with standard and customized requirements depending upon applications.

LUMINARY DISTRIBUTION

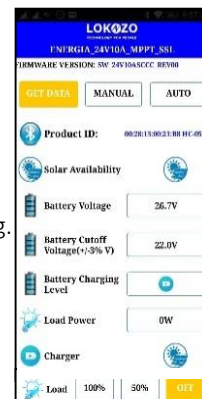
The beam distribution and throw are exceptional while the variable lamp holder position enables a choice of concentrated distribution to suit the location within the stadium structure.

LOKOZO
TECHNOLOGY FOR PEOPLE

LOKOZO is offering Solar High Mast Light to the customers, to cater to their Area lighting needs. Our experts carry out the designing procedure in accordance with the industry laid parameters and thus, bring forth products imparted with flawless configuration. Easy to maintain and capable of delivering brighter illumination, these lights are in big demand across the country. In addition to the area Lighting, the LED High Mast Light also provides safety and guidance of traffic and provides secure and comfortable surroundings for the travellers. High Mast Lighting plays a vital role in reducing accidents and crimes.

FEATURES

- More than 50% saving in Power Costs.
- Safe as they work on low-voltage.
- Low power consumption.
- Very luminous efficient.
- Very low heat radiation-cool and safe to touch.
- Fast response time -No flicker.
- Additional Power Saving can be achieved by dimming.
- Long life - 50,000 Hours.
- Data communication through blue tooth by LOKOZO App.
- Maintenance -free, just install and forget.
- We provide simulated result offer light based on customer application for optimum choice of the light and illumination.



 **Bluetooth®**

LED LUMINARIES

- 4 Nos. of highly LED street light / Flood light mounted at top of pole with 90° separation.
- Specially designed optics with highest quality lens which will give good uniformity and wider area coverage.
- Proper heat sink is designed to take care of thermal management that maintains the desired life and lumen output of LED.
- LED chips are with high lumen packages having longer life.
- Luminaries are designed for higher IP Protection.
- 360 degrees illumination.

SOLAR PV MODULE

- High efficiency poly-crystalline solar modules are tested for longer durability and manufactured with innovative technologies.
- Modules are available in wide watt power range suitable for different applications.
- Modules are designed for withstanding highly corrosive atmosphere and heavy wind loads. Tested as per IEC 61701.
- Junction boxes are supplied with IP65 protections.
- Solar panels are certified for industry standard IEC 61215, IEC 61730 (Safety class 1&11), IEC 61701 and CE.

PART NO.	HLX-I-7	HLX-I-8	HLX-I-9	HLX-I-12
Pole Height	7 Meters	8 Meters	9 Meters	12 Meters
Type	Manual	Manual	Manual	Motorized
Luminary Rating	20W x 4	30W x 4	45W x 4	36W x 4
Gel BATTERY	12V @40Ah	12V @60Ah	12V @60Ah	12V @80Ah
SOLAR PANEL	40Wp x 4	60Wp x 4	60Wp x 4	75Wp x 4
Dimming	YES	YES	YES	YES
Autonomy	2 Days	2 Days	2 Days	2 Days

12W ALL IN ONE SOLAR STREET LIGHT



Features

- Micro-processor based intelligent and efficient indigenous design
- Easy to install off-grid system
- Theft proof long life lithium battery pack
- All in one solar street-light comes with built-in passive infrared PIR motion sensor which automatically detects human/traffic presence adjusts LED brightness accordingly. If there is no motion for more than 30 seconds, the controller reduces brightness to fifty per cent. On detecting any movement in the range of 12 meters, the light will automatically glow at full power. This provides required illumination only when needed and helps in increasing battery backup period.



TECHNICAL SPECIFICATIONS

Product Name	GMX-12-PRM-A
LED Lamp	12 Watt
LED Chip	OSRAM OSLO
Solar PV Module	30wp Mono-Crystalline
Solar Panel MPP Voltage	19 volt
Battery Type and Capacity	12.8V 120WH LiFePO4
Motion Sensor	Passive Infrared Sensor - 12 meters working range, Detection: 102 degree horizontal 92 degree vertical
Lumen Output	1800 LUMEN
Secondary Optics	Yes
LED Driver Efficiency	> 92 %
LED Driver Methodology	Dual PWM dc-dc Buck Converter
Charge Controller Methodology	Three Stage Battery Charge Monitoring Algorithm
Ideal Current Consumption	Less than 2 ma
PWM Frequency	LED driver: 30.53 KHz Charge Controller: 25 Hz
Light Mounting Height	4 Meter Above Ground Level
Colour Temperature	6000K - 6500K
Humidity range	0 to 95%
Temperature Range	0°C TO 60°C
Dimensions(mm)	540x400x42
Weight(Kg)	7.5Kg
Product Warranty	5 Years

15W ALL IN ONE SOLAR STREET LIGHT



Features

- Micro-processor based intelligent and efficient indigenous design
- Easy to install off-grid system
- Theft proof long life lithium battery pack
- All in one solar street-light comes with built-in passive infrared PIR motion sensor which automatically detects human/traffic presence adjusts LED brightness accordingly. If there is no motion for more than 30 seconds, the controller reduces brightness to fifty per cent. On detecting any movement in the range of 12 meters, the light will automatically glow at full power. This provide required illumination only when needed and helps in increasing battery backup period.



TECHNICAL SPECIFICATIONS

Product Name	GMX-15-PRM-A
LED Lamp	15 Watt
LED Chip	OSRAM OSLO
Solar PV Module	40wp Mono-Crystalline
Solar Panel MPP Voltage	19 volt
Battery Type and Capacity	12.8V 154WH LiFePO4
Motion Sensor	Passive Infrared Sensor - 12 meters working range, Detection: 102 degree horizontal 92 degree vertical
Lumen Output	2250 LUMEN
Secondary Optics	Yes
LED Driver Efficiency	> 92 %
LED Driver Methodology	Dual PWM dc-dc Buck Converter
Charge Controller Methodology	Three Stage Battery Charge Monitoring Algorithm
Ideal Current Consumption	Less than 2 ma
PWM Frequency	LED driver: 30.53 KHz Charge Controller: 25 Hz
Light Mounting Height	4 Meter Above Ground Level
Colour Temperature	6000K - 6500K
Humidity range	0 to 95%
Temperature Range	0°C TO 60°C
Dimensions(mm)	655x400x42
Weight(Kg)	8.8Kg
Product Warranty	5 Years

18W ALL IN ONE SOLAR STREET LIGHT



Features

- Micro-processor based intelligent and efficient indigenous design
- Easy to install off-grid system
- Theft proof long life lithium battery pack
- All in one solar street-light comes with built-in passive infrared PIR motion sensor which automatically detects human/traffic presence adjusts LED brightness accordingly. If there is no motion for more than 30 seconds, the controller reduces brightness to fifty per-cent. On detecting any movement in the range of 12meters, the light will automatically glow at full power. This provide required illumination only when needed and helps in increasing battery backup period.



TECHNICAL SPECIFICATIONS

Product Name	GMX-18-PRM-A
LED Lamp	18 Watt
LED Chip	OSRAM OSOLON
Solar PV Module	45wp Mono-Crystalline
Solar Panel MPP Voltage	19 volt
Battery Type and Capacity	12.8V 192WH LiFePO4
Motion Sensor	Passive Infrared Sensor - 12 meters working range, Detection: 102 degree horizontal 92 degree vertical
Lumen Output	2700 LUMEN
Secondary Optics	Yes
LED Driver Efficiency	> 92 %
LED Driver Methodology	Dual PWM dc-dc Buck Converter
Charge Controller Methodology	Three Stage Battery Charge MonitoringAlgorithm
Ideal Current Consumption	Less than 2 ma
PWM Frequency	LED driver: 30.53 KHz Charge Controller: 25 Hz
Light Mounting Height	4 Meter Above Ground Level
Colour Temperature	6000K - 6500K
Humidity range	0 to 95%
Temperature Range	0°C TO 60°C
Dimensions(mm)	750x400x42
Weight(Kg)	9.8Kg
Product Warranty	5 Years

24W ALL IN ONE SOLAR STREET LIGHT



Features

- Micro-processor based intelligent and efficient indigenous design
- Easy to install off-grid system
- Theft proof long life lithium battery pack
- All in one solar street-light comes with built-in passive infrared PIR motion sensor which automatically detects human/traffic presence adjusts LED brightness accordingly. If there is no motion for more than 30 seconds, the controller reduces brightness to fifty per-cent. On detecting any in the range of 12meters, the light will automatically glow at full power. This provide required illumination only when needed and helps in increasing battery backup period.



TECHNICAL SPECIFICATIONS

Product Name	GMX-24-PRM-A
LED Lamp	24 Watt
LED Chip	OSRAM OSOLON
Solar PV Module	50wp Mono-Crystalline
Solar Panel MPP Voltage	19 volt
Battery Type and Capacity	12.8V 231WH LiFePO4
Motion Sensor	Passive Infrared Sensor - 12 meters working range, Detection: 102 degree horizontal 92 degree vertical
Lumen Output	3600 LUMEN
Secondary Optics	Yes
LED Driver Efficiency	> 92 %
LED Driver Methodology	Dual PWM dc-dc Buck Converter
Charge Controller Methodology	Three Stage Battery Charge Monitoring Algorithm
Ideal Current Consumption	Less than 2 ma
PWM Frequency	LED driver: 30.53 KHz Charge Controller: 25 Hz
Light Mounting Height	4 Meter Above Ground Level
Colour Temperature	6000K - 6500K
Humidity range	0 to 95%
Temperature Range	0°C TO 60°C
Dimensions(mm)	945x400x42
Weight(Kg)	12Kg
Product Warranty	5 Years

30W ALL IN ONE SOLAR STREET LIGHT



Features

- Micro-processor based intelligent and efficient indigenous design
- Easy to install off-grid system
- Theft proof long life lithium battery pack
- All in one solar street-light comes with built-in passive infrared PIR motion sensor which automatically detects human/traffic presence adjusts LED brightness accordingly. If there is no motion for more than 30 seconds, the controller reduces brightness to fifty per cent. On detecting any movement in the range of 12 meters, the light will automatically glow at full power. This provide required illumination only when needed and helps in increasing battery backup period.



TECHNICAL SPECIFICATIONS

Product Name	GMX-30-PRM-A
LED Lamp	30 Watt
LED Chip	OSRAM OSOLON
Solar PV Module	60wp Mono-Crystalline
Solar Panel MPP Voltage	19 volt
Battery Type and Capacity	12.8V 308WH LiFePO4
Motion Sensor	Passive Infrared Sensor - 12 meters working range, Detection: 102 degree horizontal 92 degree vertical
Lumen Output	4500 LUMEN
Secondary Optics	Yes
LED Driver Efficiency	> 92 %
LED Driver Methodology	Dual PWM dc-dc Buck Converter
Charge Controller Methodology	Three Stage Battery Charge Monitoring Algorithm
Ideal Current Consumption	Less than 2 ma
PWM Frequency	LED driver: 30.53 KHz Charge Controller: 25 Hz
Light Mounting Height	4 Meter Above Ground Level
Colour Temperature	6000K - 6500K
Humidity range	0 to 95%
Temperature Range	0°C TO 60°C
Dimensions(mm)	1155x400x42
Weight(Kg)	14.5Kg
Product Warranty	5 Years

40W ALL IN ONE SOLAR STREET LIGHT



Features

- Micro-processor based intelligent and efficient indigenous design
- Easy to install off-grid system
- Theft proof long life lithium battery pack
- All in one solar street-light comes with built-in passive infrared PIR motion sensor which automatically detects human/traffic presence adjusts LED brightness accordingly. If there is no motion for more than 30 seconds, the controller reduces brightness to fifty percent. On detecting any movement in the range of 12meters, the light will automatically glow at full power. This provide required illumination only when needed and helps in increasing battery backup period.



TECHNICAL SPECIFICATIONS

Product Name	GMX-40-PRM-A
LED Lamp	40 Watt
LED Chip	OSRAM OSLOM
Solar PV Module	75wp Mono-Crystalline
Solar Panel MPP Voltage	19 volt
Battery Type and Capacity	12.8V 385WH LiFePO4
Motion Sensor	Passive Infrared Sensor - 12 meters working range, Detection: 102 degree horizontal 92 degree vertical
Lumen Output	6000 LUMEN
Secondary Optics	Yes
LED Driver Efficiency	> 92 %
LED Driver Methodology	Dual PWM dc-dc Buck Converter
Charge Controller Methodology	Three Stage Battery Charge Monitoring Algorithm
Ideal Current Consumption	Less than 2 ma
PWM Frequency	LED driver: 30.53 KHz Charge Controller: 25 Hz
Light Mounting Height	4 Meter Above Ground Level
Colour Temperature	6000K - 6500K
Humidity range	0 to 95%
Temperature Range	0°C TO 60°C
Dimensions(mm)	1360x400x42
Weight(Kg)	17Kg
Product Warranty	5 Years

50W ALL IN ONE SOLAR STREET LIGHT



Features

- Micro-processor based intelligent and efficient indigenous design
- Easy to install off-grid system
- Theft proof long life lithium battery pack
- All in one solar street-light comes with built-in passive infrared PIR motion sensor which automatically detects human/traffic presence adjusts LED brightness accordingly. If there is no motion for more than 30 seconds, the controller reduces brightness to fifty per cent. On detecting any movement in the range of 12 meters, the light will automatically glow at full power. This provide required illumination only when needed and helps in increasing battery backup period.



TECHNICAL SPECIFICATIONS

Product Name	GMX-50-PRM-A
LED Lamp	50 Watt
LED Chip	OSRAM OSOLON
Solar PV Module	100wp Mono-Crystalline
Solar Panel MPP Voltage	19 volt
Battery Type and Capacity	12.8V 576WH LiFePO4
Motion Sensor	Passive Infrared Sensor - 12 meters working range, Detection: 102 degree horizontal 92 degree vertical
Lumen Output	7500 LUMEN
Secondary Optics	Yes
LED Driver Efficiency	> 92 %
LED Driver Methodology	Dual PWM dc-dc Buck Converter
Charge Controller Methodology	Three Stage Battery Charge Monitoring Algorithm
Ideal Current Consumption	Less than 2 ma
PWM Frequency	LED driver: 30.53 KHz Charge Controller: 25 Hz
Light Mounting Height	6 Meter Above Ground Level
Colour Temperature	6000K - 6500K
Humidity range	0 to 95%
Temperature Range	0°C TO 60°C
Dimensions(mm)	1100x730x42
Weight(Kg)	22.5Kg
Product Warranty	5 Years

80W ALL IN ONE SOLAR STREET LIGHT



Features

- Micro-processor based intelligent and efficient indigenous design
- Easy to install off-grid system
- Theft proof long life lithium battery pack
- All in one solar street-light comes with built-in passive infrared PIR motion sensor which automatically detects human/traffic presence adjusts LED brightness accordingly. If there is no motion for more than 30 seconds, the controller reduces brightness to fifty per cent. On detecting any movement in the range of 12 meters, the light will automatically glow at full power. This provide required illumination only when needed and helps in increasing battery backup period.



TECHNICAL SPECIFICATIONS

Product Name	GMX-80-PRM-A
LED Lamp	80 Watt
LED Chip	OSRAM OSOLON
Solar PV Module	150wp Mono-Crystalline
Solar Panel MPP Voltage	19 volt
Battery Type and Capacity	12.8V 1024WH LiFePO4
Motion Sensor	Passive Infrared Sensor - 12 meters working range, Detection: 102 degree horizontal 92 degree vertical
Lumen Output	10000 LUMEN
Secondary Optics	Yes
LED Driver Efficiency	> 92 %
LED Driver Methodology	Dual PWM dc-dc Buck Converter
Charge Controller Methodology	Three Stage Battery Charge Monitoring Algorithm
Ideal Current Consumption	Less than 2 ma
PWM Frequency	LED driver: 30.53 KHz Charge Controller: 25 Hz
Light Mounting Height	6 Meter Above Ground Level
Colour Temperature	6000K - 6500K
Humidity range	0 to 95%
Temperature Range	0°C TO 60°C
Dimensions(mm)	1475x600x42
Weight(Kg)	40Kg
Product Warranty	5 Years

COMPANY PROFILE



The Portfolio



Greenmax Systems – Started in the Year 2002 The leading Power Back-up Solution provider in India, with its consistent focus on technological innovation, has attained heights unheard of, in the largely unorganized industry. Having a clear technological edge, creating new benchmarks and upgrading standards for the industry, comes naturally to Greenmax. Today, Greenmax Systems is the established leader in product innovation, design sensibility and sales distribution network



CORPORATE OVERVIEW



15
YEAR SUCCESSFULLY

1
GLOBAL TRAINING
CENTRE

50
EMPLOYEES



1
MANUFACTURING
PLANTS

1
BHOPAL (M.P.)

2
BRANCHE IN BHOPAL



SOLAR STREET LIGHT

- All in one street light
- Integrated LED street light
- Luminaries Light
- AC Light/Traditional Light



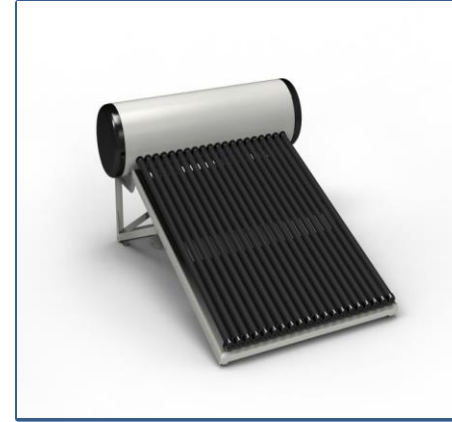
SOLAR PUMP

- Solar DC Pump
- Solar AC Pump
- DC, AC Combo



SOLAR ROOFTOP

- On Grid
- Off Grid
- Hybrid



SOLAR WATER HEATER

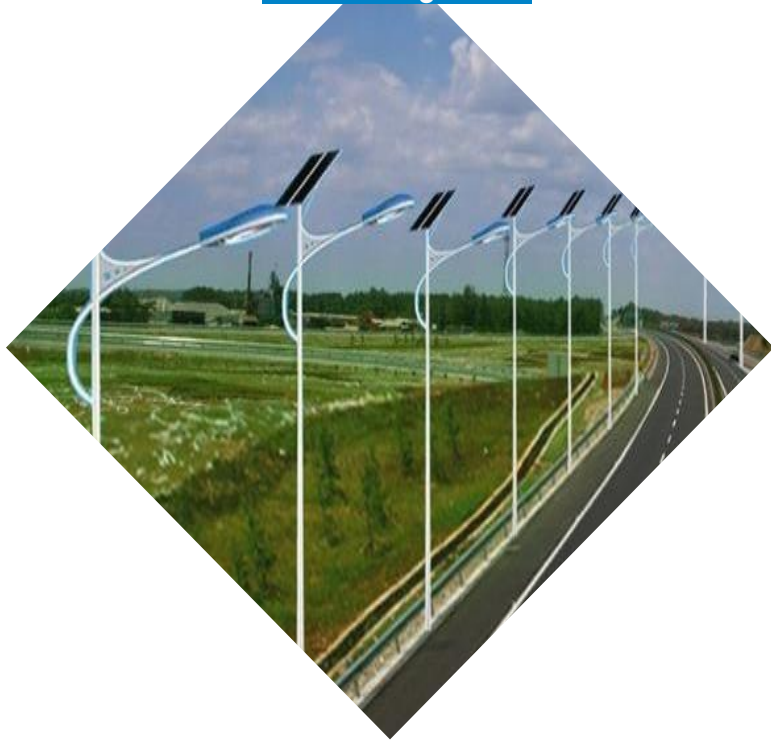
- All Type of Solar Water Heater
- FPC (Flat Plate Collectors)
- ETC (Evacuated Tube Collectors)



SOLAR HOME LIGHTING

- Home Light
- Lamp
- Solar Power Pack
- Lantern
- Solar Cooker

Solar Light



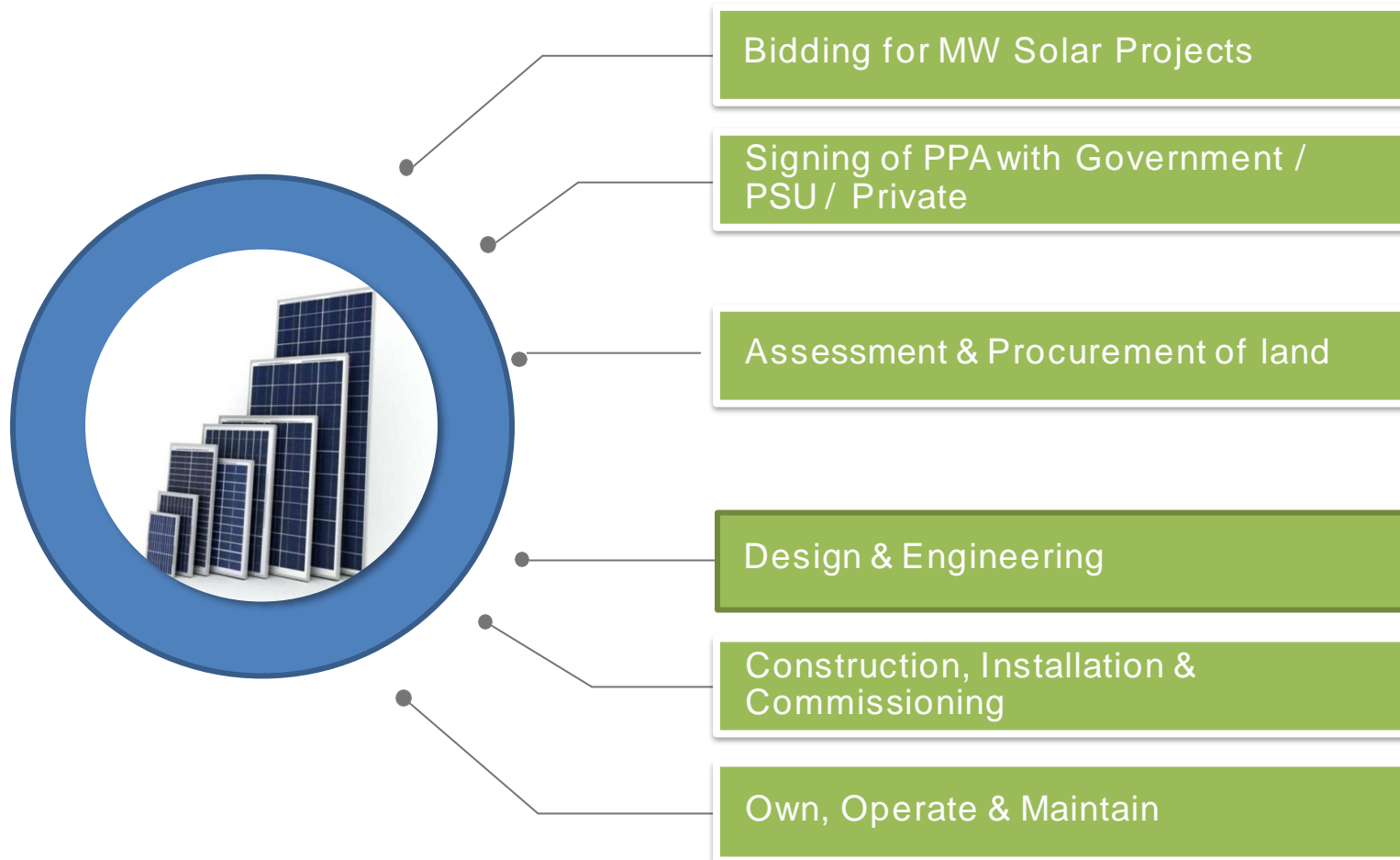
Solar Pump



Solar Products



SOLAR WHAT-WE DO

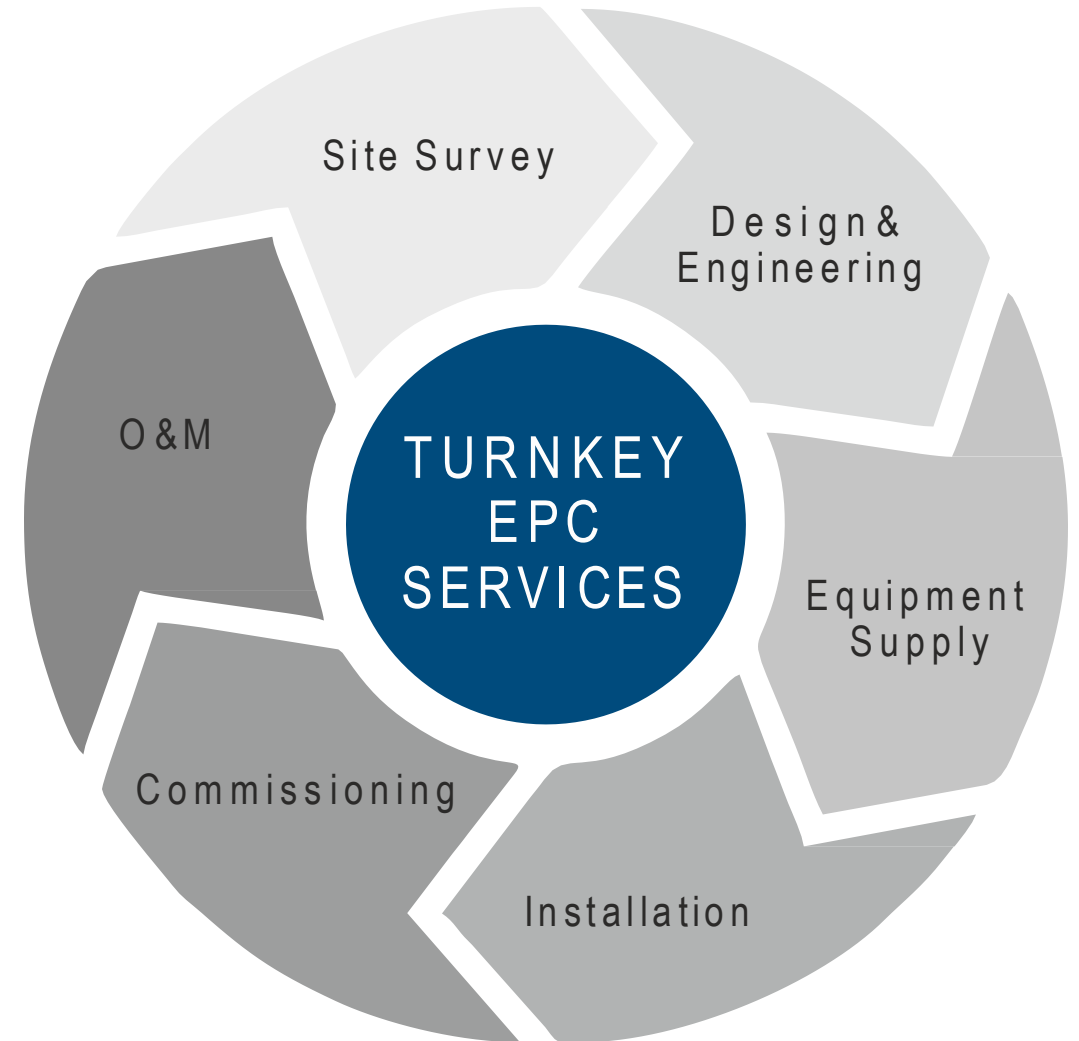


Setting up of MW scale land based Solar Power Plants under long term PPAs to sell power to Utilities

Setting up rooftop solar power plants on BOO/RESCO basis under long term PPAs to sell power to Government/Private customers

SOLAR - WHAT

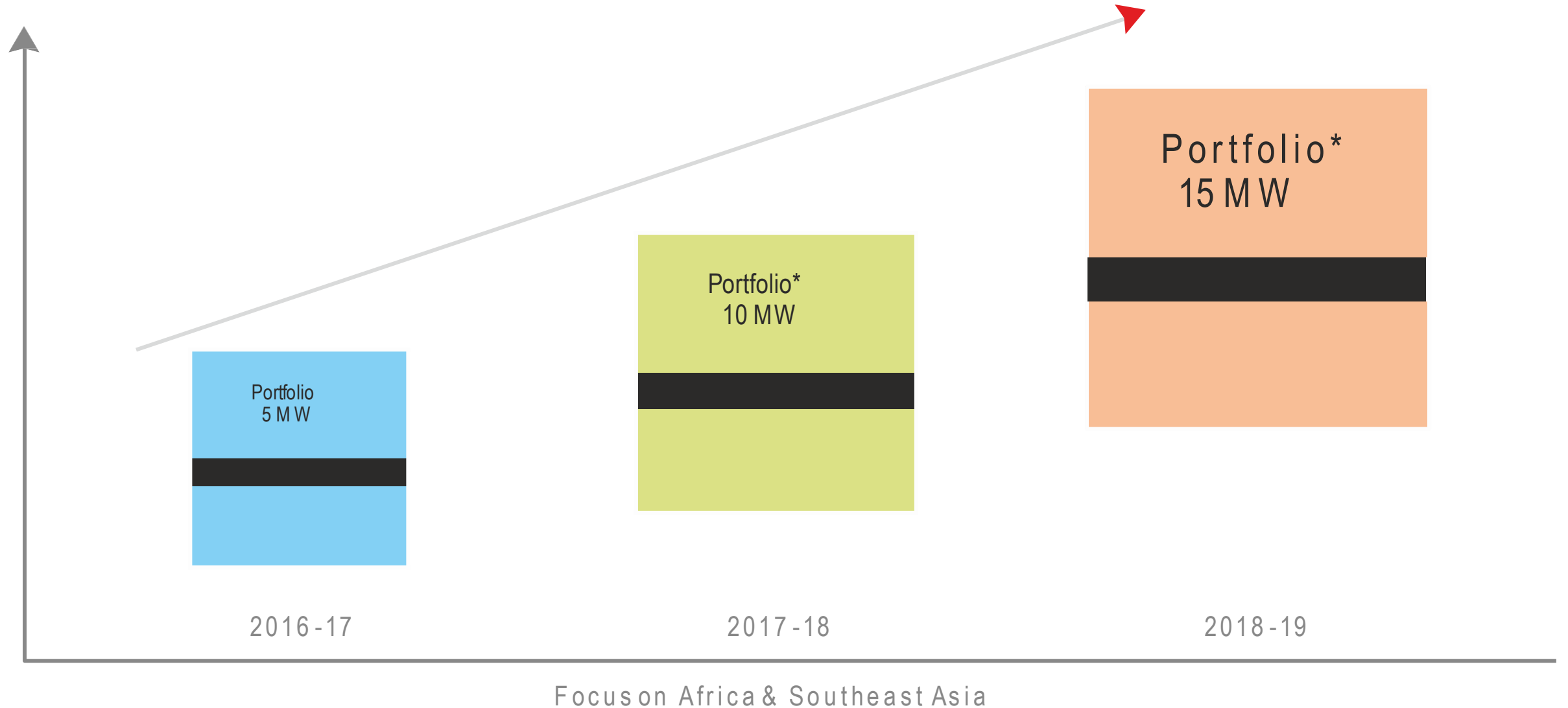
WE DO



SOLAR PLANTS



SOLAR GROWTH PLANS



SOLAR PRODUCT



Petrol Pump, Vidisha MadhyaPradesh



100 Kw Plant at Jaipur Rajsthan



1000KW , UP



Green Urja (P) Ltd., Gujrat, UP



Punj Lloyd, Mansa, Punjab



Rajasthan

Sr. No.	Customer	Location
1	Hero Moto Corp	Rajsthan/Haryana/Haridwar/Gurgaon
2	Solar Solution Company	Udaipur
3	Radhamani Traders	Odisha
4	Swati Enterprises	Bhuneaneshwar
5	H&L Enterprises	Bilaspur
6	Durak Energy	Sikandrabad

Manufacturing

- Solar Modules
- Solar Street Light
- Solar Pumping Systems
- Home Light Systems
- Solar Retail Products



MANUFACTURING



- Manufacturing area – 15000 sq. ft.
- Customized solutions
 - Ground mounting Systems
 - Rooftop mounting Systems
- Solar Street Light
- Solar Pump AC/DC



SOLAR RETAIL PRODUCTS



Solar Street Lights



Solar Water Pumps



Off-grid power packs



On-grid power packs



Solar Home Systems



Smart Modules



PV Modules



Solar Water Heater

Certification MNRI Approval/Solar Water Pump/All In One LED Street Light



Si'Tarc®
SCIENTIFIC AND INDUSTRIAL TESTING AND RESEARCH CENTRE
(Formerly Small Industries' Testing and Research Centre)
Recognised by Department of Scientific and Industrial Research (DSIR)
Govt of India, New Delhi (as Scientific and Industrial Research Organisation)
Sponsored By Industrial Development Bank Of India (IDBI)
Promoted by SIEMA & CODISSIA and Supported by COINDIA
83 & 84 Avarampalayam Road, K.R. Puram Post, Coimbatore - 641 006.
☎ : 91-0422 - 2560473, 4273612 ☎ : 94875 80473 E-mail : sitarcinfo@sitarc.com, Website : www.sitarc.com

TEST REPORT

Test Report No. : 03 3030
Date : 31.08.2017
Page No. : 1 of 5
Location of Testing Laboratory : SCIENTIFIC AND INDUSTRIAL TESTING AND RESEARCH CENTRE (Si'Tarc)
83 & 84, Avarampalayam Road, K R Puram Post COIMBATORE - 641 006.

Si'Tarc Invoice No. & Date : Invoice No. 1540/17-18 dated 31.08.2017
Name & Address of the Customer : Greenmax Technology
Plot No-8, Amaltas colony, Phase-1, Chunabhathi, Bhopal - 462016

Customer Doc. Ref. No. & Date : -, 23.08.2017
Item Description : 1 HP Solar Pump Controller
Sample Identification Details : Model No. GMT72T-0.75kW
Grade/Variety/Type/Size/Class. : -
Batch No./Date of Manufacturing : -
Item Tested on : 23.08.2017
Seal/Signature : -
Any Other Information : As per IEC 60529 Edition 2.1

Prepared By : R. JEYABHARATHI
Manager (Customer care)

Authorised By : A. M. SELVARAJ
Joint Director

* Note : This Report is Subjected to the Terms and Conditions Mentioned Overleaf.
* Recognised by Bureau of Indian Standards (BIS) and Bureau of Energy Efficiency (BEE), and Ministry of New and Renewable Energy (MNRE) New Delhi.
* Accredited by National Accreditation Board for Testing and Calibration (NABL), New Delhi in the Testing Field of Chemical, Electrical Mechanical & Biological and in the Calibration Field of Electro Technical, Mechanical & Thermal

SLFCC011 - 01.02 - 10.16

NISE
National Institute of Solar Energy
(An Autonomous Institution of MNRE, GOI)
19 K.m Stone, Gurgaon-Faridabad Road, Gwal Phari, Gurgaon (Haryana)-122303

File No. 251/2017-18 NIS/NISE 1743 Dated: 09-10-17

To, M/S - Greenmax Technology
Plot No. 8, Amaltas Phase-1
Opposite Petrol Pump, Chunabhathi, Bhopal - 462017.

Subject: Issue of Test Report by National Institute of Solar Energy (NISE)

Dear Sir,

Please refer to your letter No./Order Form No. 04 Dated 29-08-17 in this connection, I am directed to enclose herewith the Test Report No : 1540/17-18/2017/11/1 NISLS Dated 06-10-2017. In respect of your submitted samples in original, for ready reference and record.

2. Discrepancies, if any observed, in respect of any of the entries contained in the above report should be brought to the notice of this office within 30 days from the date of issue of this letter, failing which it will be presumed that the entries therein are in order and no further correspondence will be entertained thereafter on this particular report.

3. We would like to solicit your views and therefore enclosing a Feedback Form with a request to be filled up by you and then send as soon as possible. Your suggestions are valuable for us to make our further improvements and take corrective action in improving our quality of service.

4. Further, You are also requested to collect your samples at your cost within 30 days from the date of issue of this letter failing which NISE will dispose of the sample in best possible manner and NISE will not be responsible in any manner for this sample.

Kindly acknowledge the receipt of this letter along with original test report and original Invoice.

Yours faithfully
Shree
(In-charge, Customer Service Cell)
(National Institute of Solar Energy)

Encl:
1. Test Report-Total Page 05
2. Feedback Form

Copy forwarded for information to:
1. PA to Director General-NISE
2. Guard File
3. Office Copy



**B14 Dr. Guru Govind Narayan Singh Middle Town
Kolar Road Chunabhatti Bhopal (M.P)462016
Call:0755-4277167,9826017167
E-mail:greenmaxsystems@yahoo.in
Website:www.greenmaxsystems.com**



Welcome To LEAP INDUSTRIES

**LED Lights, Solar lights, BLDC fans &
Lithium Battery Manufacturers**

AN ISO 9001:2015 CERTIFIED COMPANY



Leap Industries

We are a Pure play

**LED Lights,
Solar Street lights,
BLDC fans &
Lithium Batteries
Manufacturing Company**

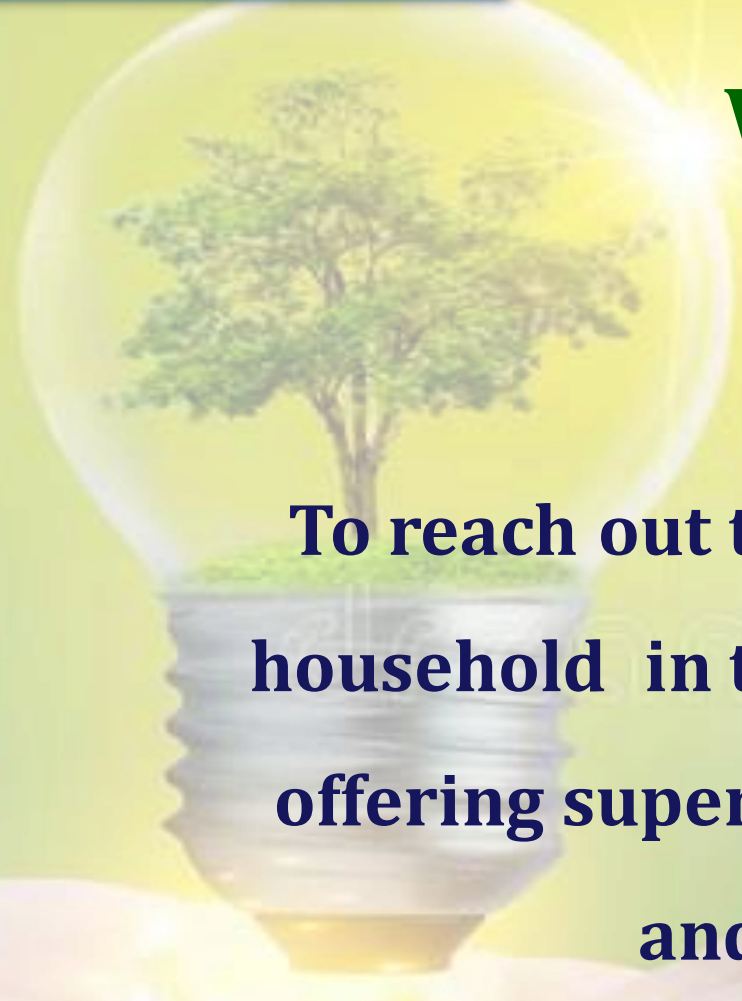
We work hard to ensure all our Stakeholders are at PEACE & HAPPY and at the same time ensure our products speak for itself.

AN ISO 9001:2015 CERTIFIED COMPANY

About LEAP Industries

- **Year of Formation - 2013**
- **Head Quarters - Bangalore, India**
- **2nd Assembly unit – Ghaziabad, U.P**
- **Branches - Chennai, Hyderabad,**
- **Team Size - 50 nos**
- **No of Unit – 4 nos (PCB unit , Lights Unit ,BLDC fan & Lithium batteries)**
- **Current Production Capacity – 2500 lights per day**

Vision

A hand is shown from the bottom, holding a glowing lightbulb. Inside the lightbulb, a small green tree is growing out of a patch of grass. The background is a soft, yellowish-green gradient.

To reach out to at least 25 million household in the next five years by offering superior quality products and services.

Mission

- 
- A hand is shown holding a glowing lightbulb. Inside the lightbulb, a green tree is visible, symbolizing growth and innovation. The background is a soft, out-of-focus green.
- Design and Develop superior products which offers the best performance in terms of **Light output and Durability** as compared to peers in the market
 - Build a robust distribution network across the top 12 states.
 - Offer superior service to our customers
 - Continuous engagement with all the stakeholders of the business.

Values

- 
- A hand is shown holding a glowing lightbulb. Inside the lightbulb, a small green tree is growing out of a layer of green grass. The background is a soft, out-of-focus green and yellow gradient.
- **People - First** : We place our customers and employees above all other aspects of the business and fully realize that we are no one without them.
 - **Customer Delight** : We are a customer focused company that constantly delivers in creating a lasting impact.
 - **Proactive approach** towards identifying solutions while meeting the customer as well as the market requirements.

HIGHLIGHTS

- ✓ Over 6 years in existence and growing steadily year on year
- ✓ Over 80% of production achieved in-house
- ✓ Dedicated Quality Control Department for Electronic, Luminary Assembly, and fan assembly Division.
- ✓ 2 Production Units and 50 Employees ensuring production capacity for over 2500 luminaries per day.
- ✓ Dedicated Research and Development wing for continuous improvement.
- ✓ **More than a dozen innovative products in pipeline for launch.**

Our Existing Product line

- 
- A conceptual image showing a hand holding a glowing lightbulb. Inside the lightbulb, a small green tree is growing out of a patch of grass, symbolizing sustainable energy and growth.
- **LED Bulbs**
 - **LED Tube Lights**
 - **LED Street Lights**
 - **LED Flood Lights / Bay Lights**
 - **Linear Lights**
 - **Solar Street Lights**
 - **2 in 1 & All in One Solar Street lights**
 - **BLDC fans –AC and DC**
 - **Lithium-ion & LifePO4 battery Packs**

Our Proposed New Product Range

- **Wall Washers**
- **LED Down lights / Panel lights / Surface mounted lights**
- **Track lights**
- **COB Spot lights**
- **Bollards / Gate lights / Hanging Lights**
- **LED Garden Lights**

The above products would be added to the existing range of products .

A glowing lightbulb is held in a person's open palm. Inside the lightbulb, a small green tree with a brown trunk grows out of a patch of green grass. The background is a soft, out-of-focus green.

PRODUCT GUARANTEE

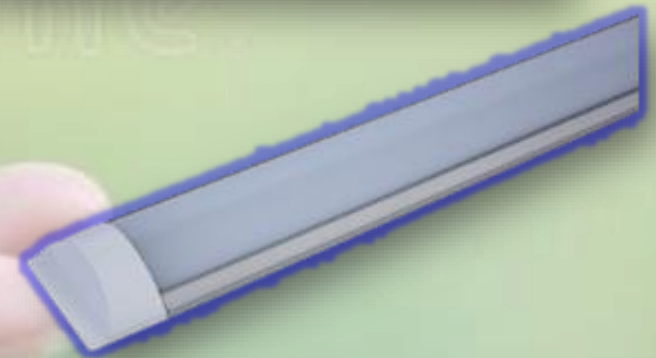
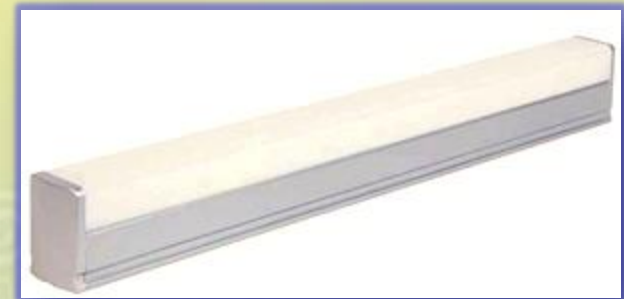
- Our LED products carry 1 year unconditional replacement warranty which is by far the best quality assurance offered by any serious player in this industry.

LED BULBS



We offer both AC and DC bulbs

LED TUBELIGHTS



**We supply AC and DC Tube lights in
1ft, 2ft and 4 ft of various Wattages**

LED STREET LIGHTS



**Our street lights range starts from 9W and goes up to 200W.
We offer customization as per the clients requirement**

LED FLOOD LIGHTS

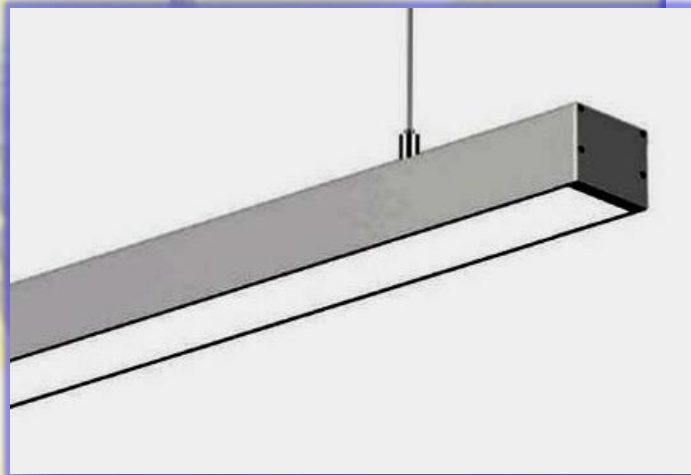


Wattage offered – 30w / 50w / 60w / 100w / 150w / 200w / 250w

HIGH BAY LIGHTS



LINEAR LIGHTS



Our Linear Lights are best in the category with respect to light output and also very competitive as compared to others players in the Industry

SOLAR STREET LIGHTS



2 IN 1 SOLAR STREET LIGHT

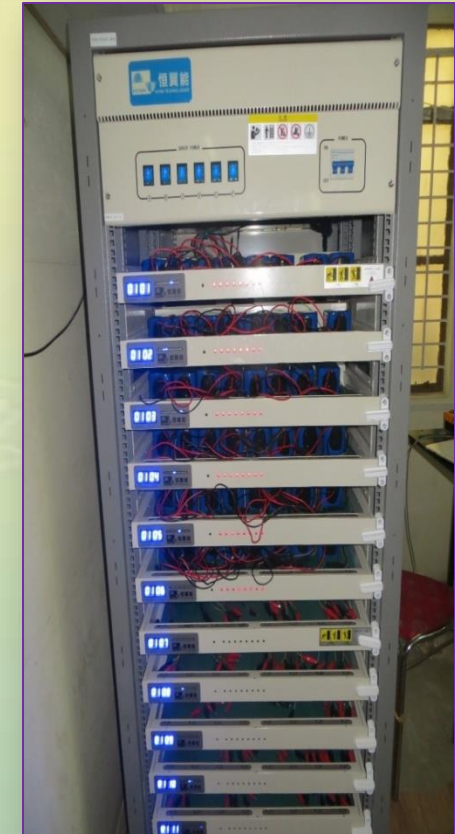
Our Solar Street lights come with in-built charge controllers and Dimming option. It is company's owned software designed to suit the Indian conditions and requirements

Highly energy efficient BLDC FANS in AC & DC



We manufacture highly energy efficient BLDC Pedestal and Table Fans in 12v to 48 V range and state of the art 220 V AC Fan with 28-30 watt power consumption

Lithium-ion and LifePO4 Batteries



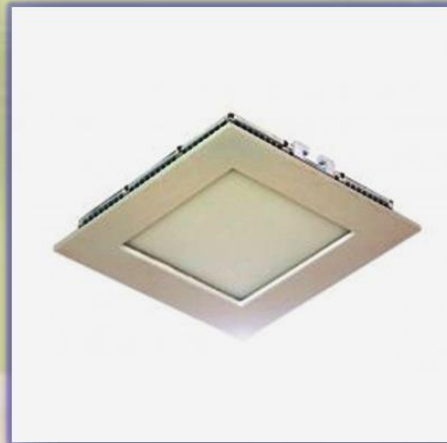
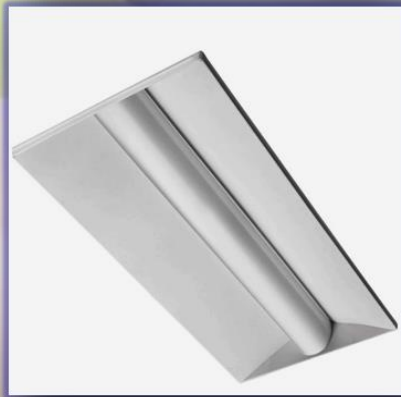
**We can customize and manufacture Batteries
as per Customers' requirements**

Wall Washers



***Proposed**

LED Down lights / Panel Lights / Surface Mounted Lights



TRACK Lights



***Proposed**

COB spot Lights

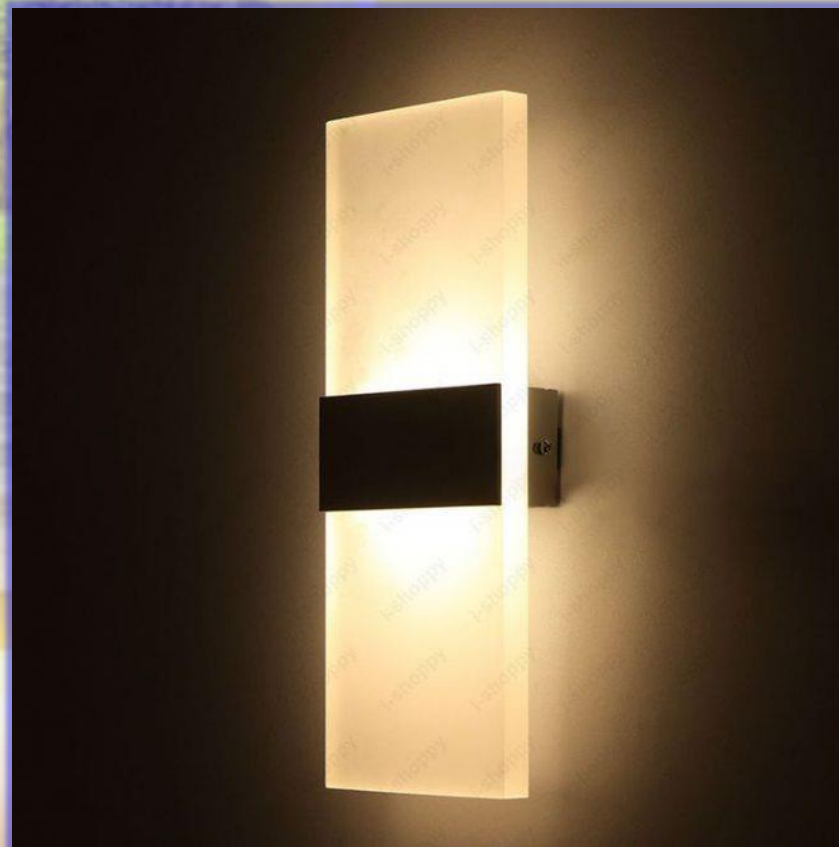


Bollards / Gate lights / Garden Lights



***Proposed**

Wall Mounted Lights



***Proposed**

Our Infrastructure

- 
- A large, glowing lightbulb is held in a person's hand. Inside the lightbulb, a small green tree with a brown trunk and dense foliage is growing out of a patch of green grass. The background is a soft, out-of-focus green and yellow gradient.
- **6000 sft of Assembling Area at Bangalore**
 - **1000 sft of Storage**
 - **750 sft for PCB Manufacturing unit**
 - **5000 sft Assembling & Testing Unit functioning at Ghaziabad, Uttar Pradesh.**

Some of our Machinery / Equipments



Our Strengths

- We are a pure play LED lighting company – Highly focussed and we track the developments in the industry on a real time basis and measure the trends
- Integrated facility right from PCB manufacturing to Electronics assembly to finished products.
- Dedicated Design and Development team for New products
- Management team with excellent customer insight
- Ability to build and execute Go to Market Strategy

List of our few valued clients

- 
- A conceptual image of a hand holding a glowing lightbulb. Inside the lightbulb, a small green tree is growing out of a patch of grass. The background is a soft, out-of-focus green.
- Govt. of Orissa
 - Govt. of Rajasthan
 - Govt. of Assam
 - Govt. of Jharkhand
 - Central Govt .Sowhagya Scheme
 - IOCL
 - Selco, Karanataka
 - Static Energy, U.P
 - Prosun Energy, T.Nadu



THANK YOU



AN ISO 9001:2015 COMPANY

MANUFACTURERS OF HIGH QUALITY:

LED LIGHTS – SOLAR & A/C
(Tube lights, Bulbs, Street Lights,
Flood Lights)

DRIVERS – SOLAR & A/C

BLDC FANS – SOLAR & A/C

BATTERIES – Lithium Ion & life PO4

Addresses: H.O

#57/58, A-unit, 2nd Floor, P.C.Industrial Estate, Kamakshipalya,
Magadi main Road, Bangalore-560079

GSTIN/UIN:29AKIPB56361ZI

Ph: 9342544556, 9591892502

E mail: rajan@leapindustries.in info@leapindustries.in

Web: www.leapindustries.in

Branch: Ghaziabad (Uttar Pradesh)

#1161,1162, Saddique Nagar, Opp: Delhi Public School,
Major Asharam Tyagi Marg, Meerut Road,

Ghaziabad – 201003 (Uttar Pradesh)

Ph: 7976337675, 8892225316

E mail: rajan@leapindustries.in info@leapindustries.in

Web: www.leapindustries.in

PRODUCT

CATALOGUE

Lighting Our Future



LOKOZO®

TECHNOLOGY FOR PEOPLE

ISO 9001 : 2015 Certified Company

OUR MISSION ▼

Harnessing the power of the
SUN with energy efficient **LIGHTING**
towards a greener planet

INDIAN
INNOVATIVE
PRODUCT
MANUFACTURER

LOKOZO
TECHNOLOGY FOR PEOPLE

WHY LOKOZO?

- MAKE IN INDIA PRODUCT
- PRODUCT WITH PRECISION ENGINEERING
- ALL INDIA DISTRIBUTOR SUPPORT
- NABL APPROVED LAB TESTED PRODUCT
- IN-HOUSE PRODUCT DESIGNED AND DEVELOPED

AREA OF LIGHTING

- SPORTS LIGHTING
- INDUSTRIAL LIGHTING
- INFRASTRUCTURAL LIGHTING
- COMMERCIAL LIGHTING
- ARCHITECTURAL LIGHTING



INTRODUCTION

LOKOZO Technologies Private Ltd. is a reputed manufacturer of LED Lights, Solar Products, Lighting Poles and Customized solutions. Lokozo takes pride in that our products are completely indigenously designed, developed, certified and manufactured in India, which gives us the advantage of the intellectual property, customization and at the same time being cost competitive. We have a highly experienced and technically competent team thus enabling the diverse lighting solutions developed over the past 7 years since the inception of LOKOZO. The founding members of Lokozo are from reputed engineering colleges like, IIT, IISc, MIT and have vast experience in technology and business space.



Who are we?

Indian Innovative Product Manufacturer



ISO 9001 : 2015 Certified

PRODUCT CERTIFICATION

- BIS for Street lights and Flood Lights.
- LM79 for all kinds of Light.
- CPRI Certificate for Solar Charge Controller.
- IK07 for Street Lights.
- 4 KV Internal Surge Protection for Street lights.
- IP65 for Outdoor Lights.
- IP40 for Bulbs / IP20 for Tube lights.

IS 10 322
(Part 5/Sec 5)



R-62001120

IS 10322
(Part 5/Sec 3)



R-62001082



LOKOZO
TECHNOLOGY FOR PEOPLE

Sports Lights



Other Sections

- Industrial Lights
- Infrastructure Lights
- Commercial Lights
- Architecture Lights

AREA LIGHTS

SPORTS(OUTDOOR)

MODEL : CANIS-Z

LED Flood Light luminaries are suitable for general purpose area lighting, High Mast Lighting, Sports Lighting. It delivers significant energy savings compared to conventional floodlights. With a choice of symmetric or asymmetric beam and of colour temperature, as well as a universal mounting bracket for easy angle adjustment, flexibility in application is assured.

A versatile range of floodlights available in 3 beam distributions for use with LED up to 1000W. Suitable for use in all general purpose exterior lighting applications.

FEATURING :

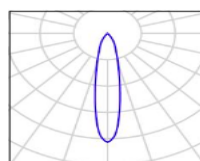
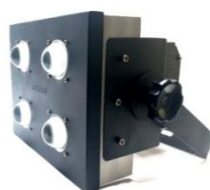
- Aluminum Heat sink body and MS with GI front cover frame, finished light grey polyester powder coating.
- The general benefits of good artificial lighting can be readily understood
- Indoors, artificial lighting helps designers to provide consistent, uniform, adequate lighting levels, sometimes using artificial lighting alone and sometimes with supplementation by daylight
- Aerodynamic design and ultra sleek
- Low weight
- High efficiency
- Family of 80W to 200W
- Extreme short ROI by energy cost saving only
- Very bright light
- Wide ambient temperature range

BIS APPROVED
BIS NO. **R-62001120**

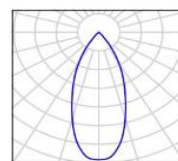
IS 10322
(Part 5/Sec 5)



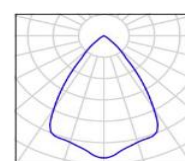
R-62001120



20°



45°



60°

TECHNICAL SPECIFICATIONS

LED Life Cycles:	50000 Hrs.
Correlated Color Temperature	5500K to 6500K
Colour Rendering Index	>70
Frequency (Hz)	50-60 Hz
Mains voltage (VAC)	110-270 VAC
Power Rating	150W, 200W, 250W, 300W, 350W, 400W, 500W, 800W, 1000W
Beam Angle	10°/20°/30°/45°/60°/90°
LED Efficacy	157 lm/W
IP	66
PF	>0.9
LED Make	OSRAM
Driver Make	LOKOZO
Finishing Color	Silver finish
Operating Temperature range	-10 to +40 °C
Driver Integrated (Yes/No)	Yes
Optical Material	Borosilicate
Housing	All noncorrosive hardware Pure Aluminium Body



AREA LIGHTS

SPORTS(INDOOR)

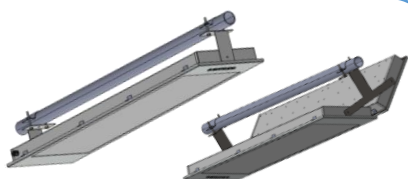


NINO

LED SPORTS LIGHT

160 lm/W

IP66



PART NO.

NINO-Z-50

50

120°

NINO-Z-100

100

120°

NINO-Z-150

150

120°

NINO-Z-200

200

120°

NINO-Z-250

250

120°

From HID to LED, LOKOZO continues to push Sports Lighting to new heights. Recognized for the highest quality and reliability in Sports lighting and area lighting applications, LOKOZO offers a wide selection of styles to meet the lighting needs of different outdoor sports ground such as Cricket, Football, Tennis, Volleyball and so on.

LOKOZO SPORTS LIGHT is an extremely flexible and versatile LED solution that ensure an excellent quality of light, targeted where is required, at the same time allows to decrease the hot spot and improve the light distribution onto different position for the playing field.

V-MAX

LED SPORTS LIGHT

160 lm/W

IP66



PART NO.

V-MAX-Z-100

100

BEAM ANGLE

30°/90°/120°

V-MAX-Z-150

150

30°/90°/120°

V-MAX-Z-200

200

30°/90°/120°

FEATURES

Aerodynamic design and ultra sleek

Low weight , High efficiency

Very bright light

Wide ambient temperature range

SLIMLINE

LED SPORTS LIGHT

160 lm/W

IP66



PART NO.

SLIMLINE-Z-30-3FT

30

BEAM ANGLE

60°/120°

SLIMLINE-Z-50-4 FT

50

60°/120°

SLIMLINE-Z-80-4FT

80

60°/120°

SLIMLINE-Z-100-4 T

100

60°/120°

SLIMLINE-Z-150-3FT

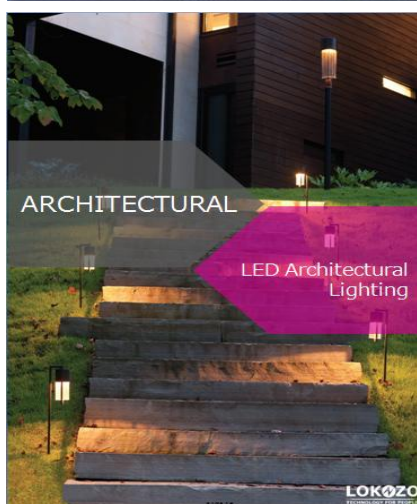
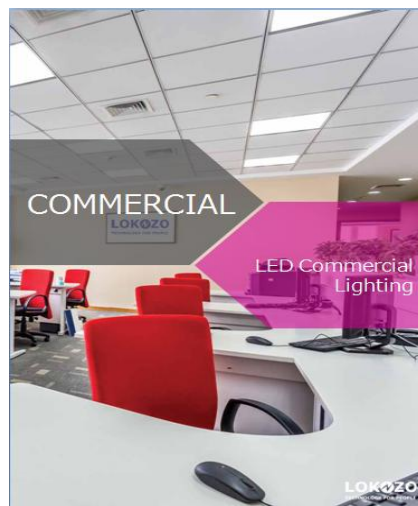
150

60°/120°

TECHNICAL SPECIFICATIONS

LED Life Cycles	50,000 Hrs.
Correlated Colour Temperature	5500K to 6500K
Colour Rendering Index	>70
PF	>0.9
Finishing Colour	Matt White / Silver
Driver Integrated (Yes/No)	Yes
LED Used	OSRAM / Seoul / CREE

Industrial Lights



Other Sections

- Infrastructure Lights
- Commercial Lights
- Architecture Lights
- Sports Lights

INDUSTRIAL LIGHTS

BAY/SHOP FLOOR

HB-COB

LED HIGH BAY LIGHT

160 lm/W

IP66



PART NO.

POWER (W)

BEAM ANGLE

HB-COB-Z-50	50	30°/60°/120°
HB-COB-Z-100	100	30°/60°/120°
HB-COB-Z-150	150	30°/60°/120°
HB-COB-Z-200	200	30°/60°/120°
HB-COB-Z-250	250	30°/60°/120°

SPICA-MAX

LED BAY LIGHT

160 lm/W

IP66



PART NO.

POWER (W)

BEAM ANGLE

SPICA-MAX-Z-100	100 x 2	30°/60°/120°
SPICA-MAX-Z-150	150 x 2	30°/60°/120°
SPICA-MAX-Z-200	200 x 2	30°/60°/120°

BAY-ELITE

LED BAY LIGHT

160 lm/W

IP66



PART NO.

POWER (W)

BEAM ANGLE

BAY-ELITE-Z-100	100	120°
BAY-ELITE-Z-150	150	120°
BAY-ELITE-Z-200	200	120°
BAY-ELITE-Z-250	250	120°
BAY-ELITE-Z-300	300	120°

ALTAIR

LED BAY LIGHT

160 lm/W

IP66

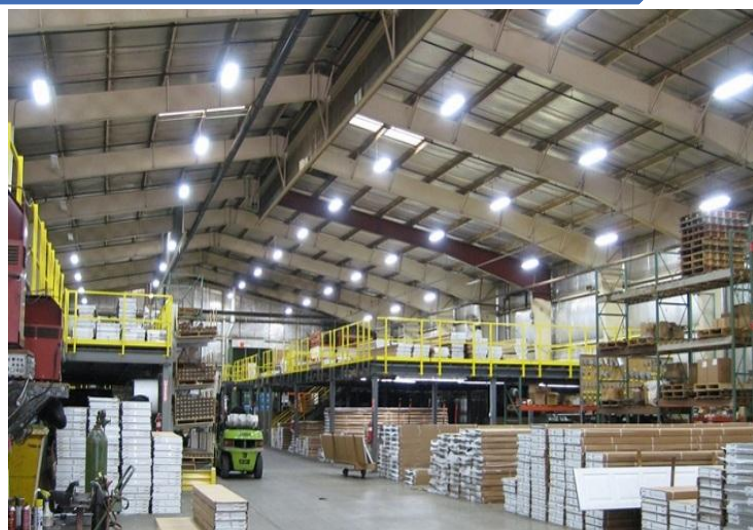


PART NO.

POWER (W)

BEAM ANGLE

ALTAIR-Z-75	75	30°/60°/120°
ALTAIR-Z-100	100	30°/60°/120°
ALTAIR-Z-150	150	30°/60°/120°
ALTAIR-Z-180	180	30°/60°/120°
ALTAIR-Z-200	200	30°/60°/120°



LED Bay Lights are suitable for industrial application including manufacturing plants and any other shop floors.

LOKOZO Bay lights are sturdy, long lasting, compact and elegant design, suitable to give with a range of reflectors types and attachments, the right solution for low and high bay lighting requirement.

FEATURES

Aerodynamic design and ultra sleek

Low weight, High efficiency

Very bright light

Wide ambient temperature range

Maintenance Supervisor

Energy efficient & Better Lighting

TECHNICAL SPECIFICATIONS

LED Life Cycles	50,000 Hrs.
Correlated Colour Temperature	5500K to 6500K
Colour Rendering Index	>70
PF	>0.9
Finishing Colour	Matt White / Silver
Driver Integrated (Yes/No)	Yes
LED Used	OSRAM / Seoul / CREE

INDUSTRIAL LIGHTS

BAY/SHOP FLOOR

CAPELLA

LED WELL GLASS LIGHT

160 lm/W

IP66



PART NO.

CAPELLA-Z-80
CAPELLA-Z-100
CAPELLA-Z-120
CAPELLA-Z-150
CAPELLA-Z-200

POWER (W)

80
100
120
150
200

BEAM ANGLE

60°/120°
60°/120°
60°/120°
60°/120°
60°/120°

ATRIA

LED CANOPY LIGHT

160 lm/W

IP66



PART NO.

ATRIA-Z-100
ATRIA-Z-130

POWER (W)

65x 1
130 x 2

BEAM ANGLE

30°/60°/120°
30°/60°/120°

CASTOR

LED WELL GLASS LIGHT

160 lm/W

IP66



PART NO.

CASTOR-Z-30
CASTOR-Z-50
CASTOR-Z-80

POWER (W)

30
50
80

BEAM ANGLE

60°/120°
60°/120°
60°/120°

NEO

LED CANOPY LIGHT

160 lm/W

IP66



R-Series



S-Series

PART NO.

NEO-R/S-30
NEO-R/S-50
NEO-R/S-80

POWER (W)

30
50
80

BEAM ANGLE

30°/60°/120°
30°/60°/120°
30°/60°/120°



LED Bay Lights are suitable for industrial application including manufacturing plants and any other shop floors.

LOKOZO Bay lights are sturdy, long lasting, compact and elegant design, suitable to give with a range of reflectors types and attachments , the right solution for low and high bay lighting requirement .

FEATURES

Aerodynamic design and ultra sleek

Low weight , High efficiency

Very bright light

Wide ambient temperature range

Maintenance Supervisor

Energy efficient & Better Lighting

TECHNICAL SPECIFICATIONS

LED Life Cycles	50,000 Hrs.
Correlated Colour Temperature	5500K to 6500K
Colour Rendering Index	>70
PF	>0.9
Finishing Colour	Matt White / Silver
Driver Integrated (Yes/No)	Yes
LED Used	OSRAM / Seoul / CREE

INDUSTRIAL LIGHTS

FACTORY

NOVA

LED EMERGENCY LIGHT

110 lm/W

IP54



PART NO.

NOVA-Z-20

NOVA-Z-30

POWER (W)

10x2

15x2

BACKUP(Hr)

2

1

ORCHID

LED WALL & AREA LIGHT

120 lm/W

IP66



PART NO.

ORCHID-Z-100

ORCHID-Z-130

POWER (W)

30

50

VOLTAGE(AC/DC)

12/24V/110VAC

12/24V/110VAC

VISION

LED EXIT LIGHT

160 lm/W

IP66



PART NO.

VISION-Z-6

VISION-Z-12

POWER (W)

6

12

BACKUP(Hr)

8

6

HLX

LED HAND LIGHT

160 lm/W

IP66



PART NO.

HLX-Z-10

HLX-Z-15

HLX-Z-50

HLX-Z-100

POWER (W)

10

15

50

100

VOLTAGE(AC/DC)

12/24V/110VAC

12/24V/110VAC

12/24V/110VAC

12/24V/110VAC



LED Lights are suitable for industrial application including manufacturing plants and any other shop floors.

LOKOZO Factory lights are sturdy, long lasting, compact and elegant design, suitable to give with a range of reflectors types and attachments , the right solution for low and high bay lighting requirement .

FEATURES

Aerodynamic design and ultra sleek

Low weight , High efficiency

Very bright light

Wide ambient temperature range

Maintenance Supervisor

Energy efficient & Better Lighting

TECHNICAL SPECIFICATIONS

LED Life Cycles	50,000 Hrs.
Correlated Colour Temperature	5500K to 6500K
Colour Rendering Index	>70
PF	>0.9
Finishing Colour	Matt White / Silver
Driver Integrated (Yes/No)	Yes
LED Used	OSRAM / Seoul / CREE

INDUSTRIAL LIGHTS

FACTORY

POLAR

LED COLD STORAGE LIGHT

95 lm/W

IP68



PART NO.

POWER (W)

BEAM ANGLE

POLAR-Z-5-1FT

5

120°

POLAR-Z-10-1/2FT

10

120°

POLAR-Z-18-1/2FT

18

120°

POLAR-Z-24-1FT

24

120°

CAPELLA-E

LED EXPLOSION PROOF LIGHT

110 lm/W

IP67



PART NO.

POWER (W)

BEAM ANGLE

CAPELLA-E-40

40

60°/120°

CAPELLA-E-80

50

60°/120°

COP

LED SEARCH LIGHT

130 lm/W

IP68



PART NO.

POWER (W)

BEAM ANGLE

COP-Z-100

100

4°/10°

COP-Z-200

200

4°/10°

COP-Z-500

500

4°/10°

FLD-E

LED EMERGENCY FLOOD LIGHT

160 lm/W

IP66



PART NO.

POWER (W)

BATTERY(Ah)

BEAM ANGLE

FLD-E-30

30

20Ah

30°/40°/90°

FLD-E-50

50

20Ah

30°/40°/90°

FLD-E-100

100

20Ah

30°/40°/90°



LED Lights are suitable for industrial application including manufacturing plants and any other shop floors.

LOKOZO Factory lights are sturdy, long lasting, compact and elegant design, suitable to give with a range of reflectors types and attachments , the right solution for low and high bay lighting requirement .

FEATURES

Aerodynamic design and ultra sleek

Low weight , High efficiency

Very bright light

Wide ambient temperature range

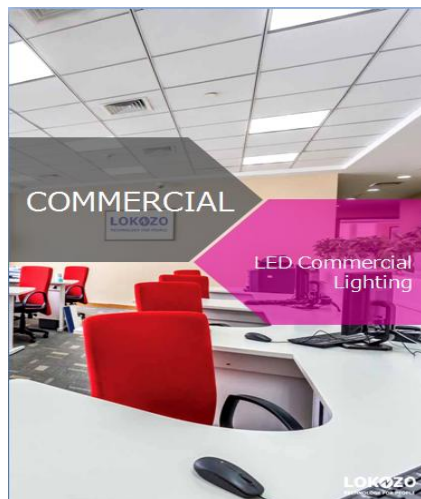
Maintenance Supervisor

Energy efficient & Better Lighting

TECHNICAL SPECIFICATIONS

LED Life Cycles	50,000 Hrs.
Correlated Colour Temperature	5500K to 6500K
Colour Rendering Index	>70
PF	>0.9
Finishing Colour	Matt White / Silver
Driver Integrated (Yes/No)	Yes
LED Used	OSRAM / Seoul / CREE

Infrastructure Lights



Other Sections

- Commercial Lights
- Architecture Lights
- Sports Lights
- Industrial Lights

INFRA- STRUCTURE LIGHTS

STREET LIGHT

Y-MAX

LED STREET LIGHT

160 lm/W

IP66



PART NO.

Y-MAX-Z-30-50
Y-MAX-Z-70-100
Y-MAX-Z-120
Y-MAX-Z-150

POWER (W)

30-50
70-100
120
150

SIZE

400x170x40
500x215x65
610x200x50
690x300x60

LYRA-Z

LED STREET LIGHT

80 lm/W

IP66



PART NO.

LYRA-Z-A/B-9-25
LYRA-Z-A/B-30-60
LYRA-Z-A/B-70-80
LYRA-Z-A/B-90-100

POWER (W)

9-25
30-60
70-80
90-100

BEAM ANGLE

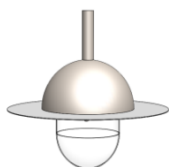
120°
120°
120°
120°

LIBRA-Z

LED STREET LIGHT

80 lm/W

IP66



PART NO.

LIBRA-Z-20
LIBRA-Z-30
LIBRA-Z-50
LIBRA-Z-80

POWER (W)

20
30
50
80

BEAM ANGLE

120°
120°
120°
120°

ADENIUM

LED STREET LIGHT

80 lm/W

IP66



PART NO.

ADENIUM-Z-30
ADENIUM-Z-40
ADENIUM-Z-80

POWER (W)

20
30
50

BEAM ANGLE

120°
120°
120°



LOKOZO street light fixtures enhance illumination along city streets while providing saving through increased energy efficiency, decreased maintenance needs and longer lifetimes.

LED Solar Street Lights also include the technology of obtaining usable energy from sun using solar panels and charging the battery.

FEATURES

Aerodynamic design and ultra sleek

Low weight , High efficiency

Very bright light

Wide ambient temperature range

Maintenance Supervisor

Energy efficient & Better Lighting

TECHNICAL SPECIFICATIONS

LED Life Cycles	50,000 Hrs.
Correlated Colour Temperature	5500K to 6500K
Colour Rendering Index	>70
PF	>0.9
Finishing Colour	Matt White / Silver
Driver Integrated (Yes/No)	Yes
LED Used	OSRAM / Seoul / CREE

INFRA- STRUCTURE LIGHTS

SMART LIGHT

MODEL : LYRA-Z-W

STREET LIGHTS AS CONNECTED AND MULTI-SENSORY GATEWAY

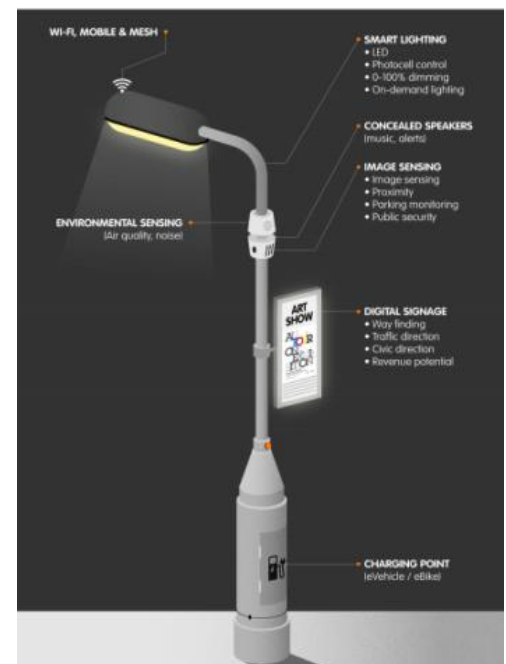
Need for Central Monitoring and Control of the Solar Street Lights

FEATURES

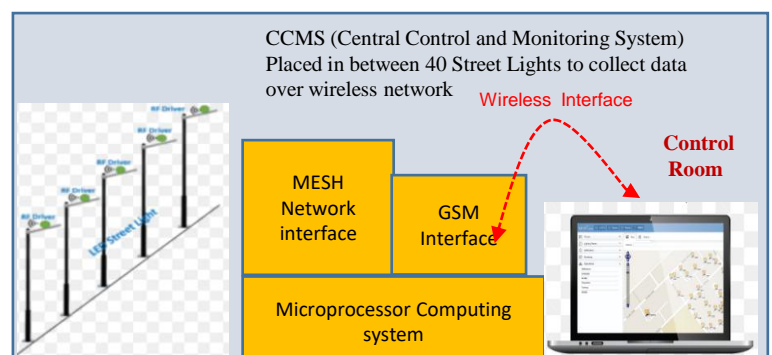
- Automatic Dusk to Dawn operation (Automatic switching ON at dusk and switching Off at dawn.
- Automatic Monitoring the status of the light at remote station
- Get the status and various parameters of the Photo voltaic Panel for further analysis
- Get the status of the Battery for further analysis
- Analyze the Panel Data to find out if cleaning is required
- Analyze the Battery Data to find out if maintenance is required
- Lower maintenance and operational cost
- Looking for a solution with better ROI
- Useful information is collected from the street light at the end of each day this information is stored in a database and based on this information charts are derived.
- Chart contains information like, Power consumption, Total number of burning hours, Total number of interruptions etc...

The Potential for New Service Development

- All Lights are connected and can be controlled from Remote for dimming and switching ON/OFF
- Status of the Lights can be remotely monitored
- CC camera for Public safety
- Traffic Management
- Wi-Fi and internet provision
- Digital signage and public communication



PART NO.	LED POWER (W)	RF MODULE
LYRA-Z-W-30	30	Yes
LYRA-Z-W-40	40	Yes
LYRA-Z-W-50	50	Yes
LYRA-Z-W-60	60	Yes
LYRA-Z-W-80	80	Yes
LYRA-Z-W-100	100	Yes



INFRA- STRUCTURE LIGHTS

SOLAR LIGHT

LOKOZO solar-powered LED lighting solutions harness the sun's energy to provide high-quality illumination for outdoor applications.

LOKOZO technology delivers a convenient, sustainable way to light your space with minimal investment and maintenance. Presenting a convenient and cost-effective way to light your streets at night. LOKOZO Solar street lighting systems provide clear visibility for pedestrians and drivers, without needing AC grid access.

These reliable street lights quickly pay back the low initial investment with substantial energy savings.

LYRA-S

SOLAR STREET LIGHT

110 lm/W

IP66

D2D

PART NO.

POWER (W)

BATTERY

LYRA-S-A/B-9-25

9-25

12V

LYRA-S-A/B-30-60

30-60

12V

LYRA-S-A/B-65

65

24V

LYRA-S-A/B-75

75

24V

LYRA-S-A/B-80

80

24V

LYRA-S-A/B-90

90

24V

LYRA-S-A/B-100

100

24V



A



B

GENTRIX-S-W

SOLAR STREET LIGHT WITH WIFI ENABLED INBUILT BATTERY AND MPPT CHARGE CONTROLLER

110 lm/W

IP66

D2D

PART NO.

POWER (W)

BATTERY

WIFI-COMMUNICATION

MOTION SENSOR

GENTRIX-S-W-40

40

14.08 VDC

Yes

Optional

GENTRIX-S-W-50

50

14.08 VDC

Yes

Optional

GENTRIX-S-W-60

60

14.08 VDC

Yes

Optional

GENTRIX-S-W-80

80

14.08 VDC

Yes

Optional

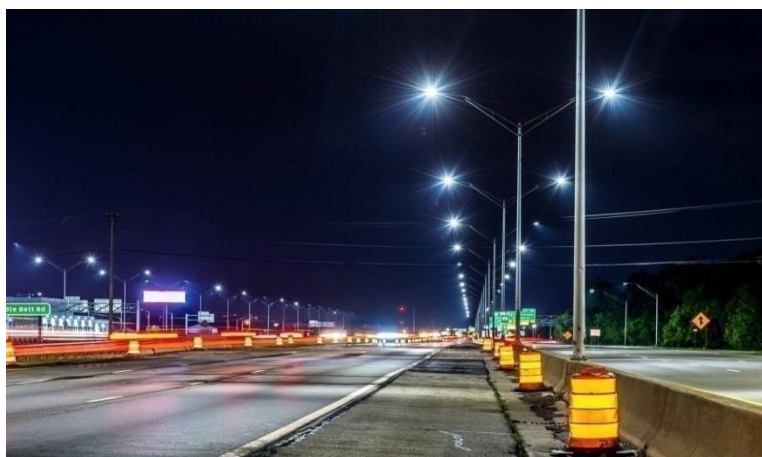
GENTRIX-S-W-100

100

14.08 VDC

Yes

Optional



TECHNICAL SPECIFICATIONS

LED Life Cycles	50,000 Hrs.
Correlated Colour Temperature	5500K to 6500K
Colour Rendering Index	>70
PF	>0.9
Finishing Colour	Matt White / Silver
Driver Integrated (Yes/No)	Yes
LED Used	OSRAM / Seoul / CREE

INFRA- STRUCTURE LIGHTS

SMART SOLAR

MODEL : LYRA-S-M

SOLAR STREET LIGHT WITH BLUETOOTH ENABLED AND INBUILT MPPT CHARGE CONTROLLER

LYRA-SM-SERIES LED SOLAR STREETLIGHTS is the technology of obtaining usable energy from the light of the sun using semi conductor materials and this is energy efficient lighting technology. **LOKOZO** lights are a range of high-quality luminaries designed to reduce lighting costs without compromise to the visual quality of outdoor environments.

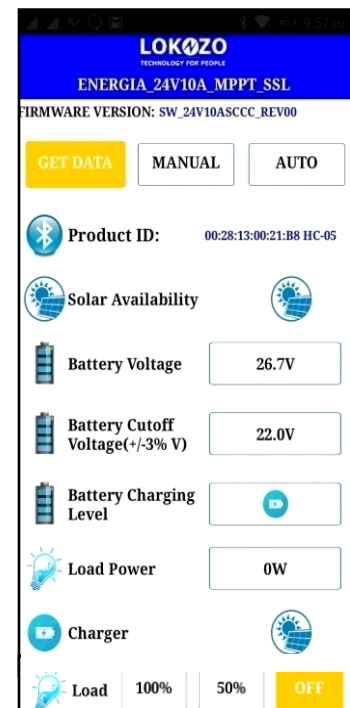
LYRA-SM-SERIES LED SOLAR STREETLIGHTS

Download the 'ENERGIA 24V10A_MPPT_SSL' App from the Play Store in Android based devices.

- Start the App and press the Bluetooth ICON on the screen.
 - Pair with Solar Street Light Unit .Following Display will appear:
 - Solar Availability, Battery Voltage, Battery Cut-off Voltages and Battery Charging Level will display on Smartphone app..
 - Load can be controlled by pressing ON or OFF on LOAD display.
 - Load Wattage can be seen on Display.
 - Load Wattage can be controlled by pressing on 50% and 100%
- Detailed screen shots are shown in below pictures.

FEATURES

- High efficiency.
- High lumens output & uniformity.
- Low power consumption.
- Low maintenance costs.
- Automatic ON/OFF control system.
- Automatic dimming control system.
- The aluminium material is of heat, corrosion and UV resistant type.
- Bluetooth communication.
- Solar Availability and Battery Cutoff will display on Smartphone app.
- Battery charging will display on Smartphone app.
- Load can be controlled by pressing ON/OFF/Dimming on LOAD display



PART NO.	LED POWER (W)	BATTERY (V)	Bluetooth Communication
LYRA-SM-40	40	24 VDC	Yes
LYRA-SM-45	45	24 VDC	Yes
LYRA-SM-50	50	24 VDC	Yes

INFRA- STRUCTURE LIGHTS

SOLAR LIGHT

LOKOZO solar-powered LED lighting solutions harness the sun's energy to provide high-quality illumination for outdoor applications.

LOKOZO technology delivers a convenient, sustainable way to light your space with minimal investment and maintenance. Presenting a convenient and cost-effective way to light your streets at night. LOKOZO Solar street lighting systems provide clear visibility for pedestrians and drivers, without needing AC grid access.

These reliable street lights quickly pay back the low initial investment with substantial energy savings.

GENTRIX-I

INTEGRATED SOLAR STREET LIGHT

110 lm/W

IP66

D2D

PART NO.	POWER (W)	BATTERY	SOLAR PANEL	MOTION SENSOR
GENTRIX-I-9	9	14.8V @3.5Ah	20WP	Optional
GENTRIX-I-12	12	14.8V 5Ah	20WP	Optional
GENTRIX-I-15	15	14.8V @8Ah	30WP	Optional
GENTRIX-I-20	20	14.8V @10Ah	30WP	Optional
GENTRIX-I-25	25	14.8V @25Ah	40WP	Optional
GENTRIX-I-45	45	14.8V @40Ah	75WP	Optional



GENTRIX-S

SOLAR STREET LIGHT WITH INTEGRATED LI-ION BATTERY & SEPARATE SOLAR PANEL

110 lm/W

IP66

D2D

PART NO.	POWER (W)	BATTERY	SOLAR PANEL	MOTION SENSOR
GENTRIX-S-9	9	14.8V @3.5Ah	20WP	Optional
GENTRIX-S-12	12	14.8V @5Ah	20WP	Optional
GENTRIX-S-15	15	14.8V @8Ah	30WP	Optional
GENTRIX-S-20	20	14.8V @10Ah	30WP	Optional
GENTRIX-S-25	25	14.8V @25Ah	40WP	Optional
GENTRIX-S-45	45	14.8V @40Ah	75WP	Optional



TECHNICAL SPECIFICATIONS

LED Life Cycles	50,000 Hrs.
Correlated Colour Temperature	5500K to 6500K
Colour Rendering Index	>70
PF	>0.9
Finishing Colour	Matt White / Silver
Driver Integrated (Yes/No)	Yes
LED Used	OSRAM / Seoul / CREE

INFRA- STRUCTURE LIGHTS

FLOOD/AREA

FLD

LED STREET LIGHT

160 lm/W

IP66



PART NO.	POWER (W)	BEAM ANGLE
FLD-Z-20	20	30°/60°/120°
FLD-Z-50	50	30°/60°/120°
FLD-Z-120	100	30°/60°/120°
FLD-Z-150	150	30°/60°/120°

SPICA-MAX

LED BAY LIGHT

160 lm/W

IP66



PART NO.	POWER (W)	BEAM ANGLE
SPICA-MAX-Z-100	50X2	30°/60°/120°
SPICA-MAX-Z-150	75X2	30°/60°/120°
SPICA-MAX-Z-200	100X2	30°/60°/120°

CANIS-E

LED FLOOD LIGHT

160 lm/W

IP66



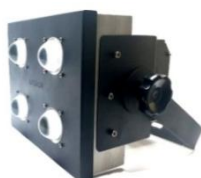
PART NO.	POWER (W)	BEAM ANGLE
CANIS-E-50	50	30°/60°/120°
CANIS-E-100	100	30°/60°/120°
CANIS-E-150	150	30°/60°/120°

CANIS-Z

LED FLOOD LIGHT

80 lm/W

IP66



PART NO.	POWER (W)	BEAM ANGLE
CANIS-Z-100	100	30°/60°/120°
CANIS-Z-150	150	30°/60°/120°
CANIS-Z-200	200	30°/60°/120°



LED Flood Light luminaries are suitable for general purpose area lighting, High Mast Lighting, Sports Lighting. It delivers significant energy savings compared to conventional floodlights.

With a choice of symmetric or asymmetric beam and of colour temperature, as well as a universal mounting bracket for easy angle adjustment, flexibility in application is assured.

FEATURES

Aerodynamic design and ultra sleek

Low weight , High efficiency

Very bright light

Wide ambient temperature range

Maintenance Supervisor

Energy efficient & Better Lighting

TECHNICAL SPECIFICATIONS

LED Life Cycles	50,000 Hrs.
Correlated Colour Temperature	5500K to 6500K
Colour Rendering Index	>70
PF	>0.9
Finishing Colour	Matt White / Silver
Driver Integrated (Yes/No)	Yes
LED Used	OSRAM / Seoul / CREE

INFRA- STRUCTURE LIGHTS

TRAFFIC LIGHT

TFX-100-Z

LED BLINK LIGHT

130 lm/W

IP66



PART NO.	POWER (W)	VOLTAGE(V)
TFX-100-Z-12	12	230
TFX-100-Z-15	15	230

TFX-310-Z

LED TRAFFIC LIGHT

130 lm/W

IP66



PART NO.	POWER (W)	VOLTAGE(V)
TFX-310-Z-12	12	230
TFX-310-Z-15	15	230

TFX-320-Z

LED TRAFFIC LIGHT

130 lm/W

IP66



PART NO.	POWER (W)	VOLTAGE(V)
TFX-320-Z-12	12	230
TFX-320-Z-15	15	230

TFX-330-Z

LED TRAFFIC LIGHT

130 lm/W

IP66



PART NO.	POWER (W)	VOLTAGE(V)
TFX-330-Z-12	12	230
TFX-330-Z-15	15	230



LED Traffic lights used to control the movement of traffic. They are placed on roads at intersections and crossings.

LED based "Traffic Lights" is highly reliable and designed for 24X7 operation to alert the road users at the intersections / U- turns. These blinkers are used at accident vulnerable locations, diverging points, unsigned intersection, turns, blind spots, school zones etc. to warn the motorists to slow down and to avoid accidents

FEATURES

Aerodynamic design and ultra sleek

Low weight , High efficiency

Very bright light

Wide ambient temperature range

Maintenance Supervisor

Energy efficient & Better Lighting

TECHNICAL SPECIFICATIONS

LED Life Cycles	50,000 Hrs.
Correlated Colour Temperature	5500K to 6500K
Colour Rendering Index	>70
PF	>0.9
Finishing Colour	Matt White / Silver
Driver Integrated (Yes/No)	Yes
LED Used	OSRAM / Seoul / CREE

INFRA- STRUCTURE LIGHTS

AVIATION LIGHT

AVX-AX/SX

LED RUNWAY AVIATION LIGHT

130 lm/W

IP66



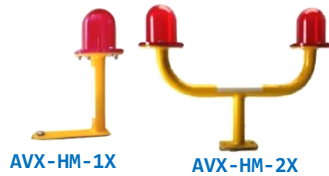
PART NO.	POWER (W)	COLOUR
AVX-AX/SX-5	5	G/R/B/O/W
AVX-AX/SX-12	12	G/R/B/O/W
AVX-AX/SX-20	20	G/R/B/O/W

AVX-HM

LED AVIATION LIGHT

130 lm/W

IP66



PART NO.	POWER (W)	COLOUR
AVX-HM-1X-5	5	G/R/B/O/W
AVX-HM-1X-12	12	G/R/B/O/W
AVX-HM-1X-20	20	G/R/B/O/W
AVX-HM-2X-12	12X2	G/R/B/O/W

HLP-Z/S

LED SEMIFLUSH HELIPORT LIGHT

130 lm/W

IP66



PART NO.	POWER (W)	COLOUR
HLP-Z/S-5	5	G/R/B/Y/W
HLP-Z/S-10	10	G/R/B/Y/W
HLP-Z/S-15	15	G/R/B/Y/W
HLP-Z/S-20	20	G/R/B/Y/W

HLP-F-Z/S

LED HELIPORT FLOOD LIGHT

130 lm/W

IP66



PART NO.	POWER (W)	COLOUR
HLP-F-Z/S-50	50	WHITE
HLP-F-Z/S-100	100	WHITE
HLP-F-Z/S-150	150	WHITE
HLP-F-Z/S-200	200	WHITE
HLP-F-Z/S-250	250	WHITE



AVX is designed to withstand the dynamic conditions experienced in the most severe environments around the world. It has been tested in temperatures ranging from -40 to +55 degrees Celsius , direct sunlight , wind blown rain , wind in excess of 150mph , high humidity , salt an fog.

FEATURES

Aerodynamic design and ultra sleek

Low weight , High efficiency

Very bright light

Wide ambient temperature range

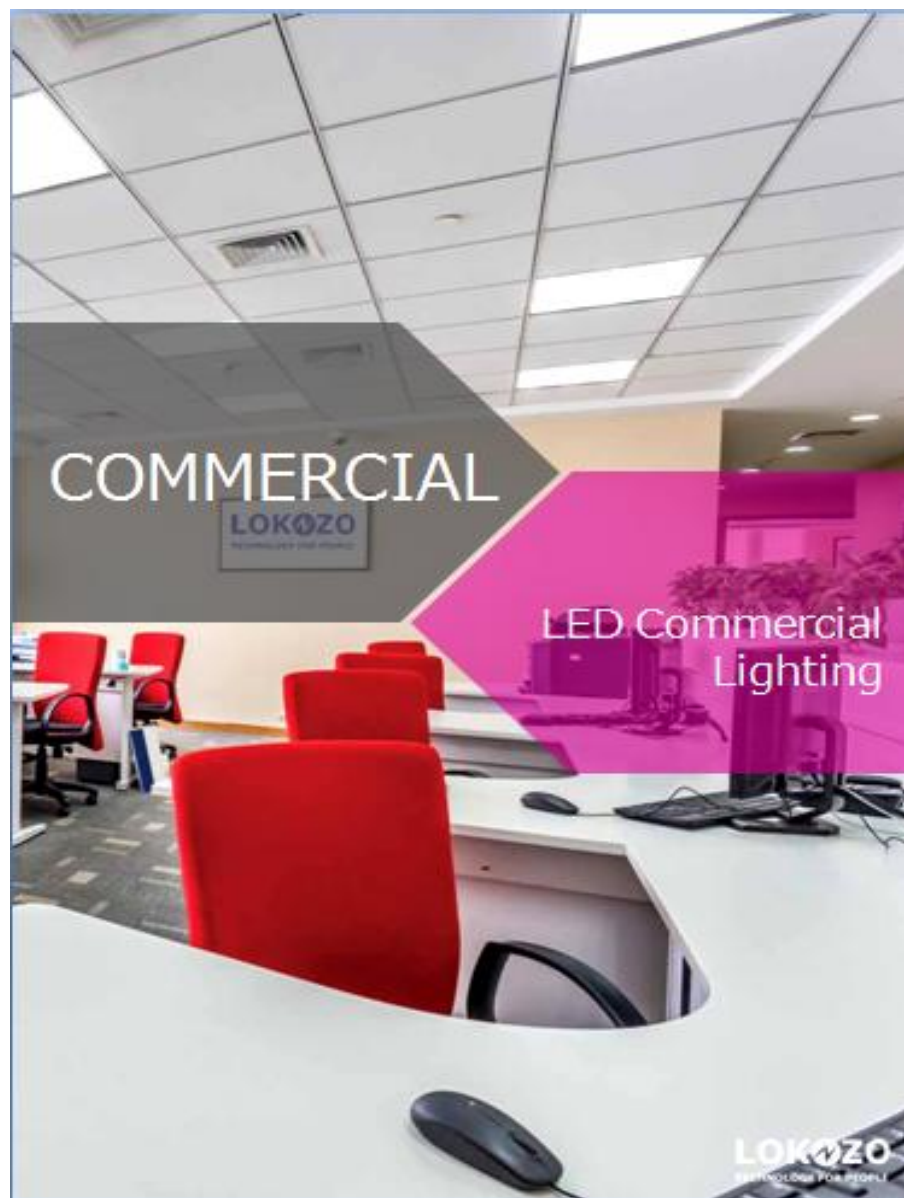
Maintenance Supervisor

Energy efficient & Better Lighting

TECHNICAL SPECIFICATIONS

LED Life Cycles	50,000 Hrs.
Correlated Colour Temperature	5500K to 6500K
Colour Rendering Index	>70
PF	>0.9
Finishing Colour	Matt White / Silver
Driver Integrated (Yes/No)	Yes
LED Used	OSRAM / Seoul / CREE
Control Options	Non-Wireless :AC Input, local control.

Commercial Lights



Other Sections

- Architectural Lights
- Sports Lights
- Industrial Lights
- Infrastructural Lights

COMMERCIAL LIGHTS

DOWN LIGHT

NINO

LED RECESSED TROFFER LIGHT

80 lm/W

IP32



PART NO.	POWER (W)	BEAM ANGLE
NINO-Z-40-1X4	40	120°
NINO-Z-40-2X2	40	120°
NINO-Z-60-2X2	60	120°
NINO-Z-80-2X4	80	120°
NINO-Z-60-2X4	60	120°

VEGA

LED COMMERTIAL LIGHT

130 lm/W

IP66



PART NO.	POWER (W)	BEAM ANGLE
VEGA-S/Z-5	5	120°
VEGA-S/Z-7	7	120°
VEGA-S/Z-9	9	120°

NIYAT

LED SLIM PANEL DOWN LIGHT

80 lm/W

IP32



PART NO.	POWER (W)	BEAM ANGLE
NIYAT-Z-R/S-5	5	120°
NIYAT-Z-R/S-15	15	120°
NIYAT-Z-R/S-18	18	120°
NIYAT-Z-R/S-22	22	120°
NIYAT-Z-R/S-30	30	120°

ORBIT

LED SLIM PANEL DOWN LIGHT

80 lm/W

IP32



PART NO.	POWER (W)	BEAM ANGLE
ORBIT-Z-R/S-5	5	120°
ORBIT-Z-R/S-15	15	120°
ORBIT-Z-R/S-18	18	120°
ORBIT-Z-R/S-22	22	120°



LED Down Light is designed to replace the inefficient conventional down lights. It offers a comprehensive solution to most domestic and commercial application with its high performance and superior lumen output .

LED Recessed Troffer combining high efficiency and high quality light in performance and value optimized package.

FEATURES

Aerodynamic design and ultra sleek

Low weight , High efficiency

Very bright light

Wide ambient temperature range

Maintenance Supervisor

Energy efficient & Better Lighting

TECHNICAL SPECIFICATIONS

LED Life Cycles	50,000 Hrs.
Correlated Colour Temperature	5500K to 6500K
Colour Rendering Index	>70
PF	>0.9
Finishing Colour	Matt White / Silver
Driver Integrated (Yes/No)	Yes
LED Used	OSRAM / Seoul / CREE

COMMERCIAL LIGHTS

BATTEN LIGHT

POLLUX-Z

LED SURFACE MOUNT TUBE LIGHT

130 lm/W

IP32



PART NO.	POWER (W)	BEAM ANGLE
POLLUX-Z-5-1FT	5	120°
POLLUX-Z-15-1FT	15	120°
POLLUX-Z-20-1FT	20	120°
POLLUX-Z-25-1FT	25	120°

VEGA-T

LED T-BULB LIGHT

130 lm/W

IP32



PART NO.	POWER (W)	BEAM ANGLE
VEGA-T-5-1FT	5	120°
VEGA-T-15-1FT	15	120°
VEGA-T-20-1FT	20	120°
VEGA-T-25-1FT	25	120°

POLLUX-M

LED SURFACE MOUNT TUBE LIGHT WITH MS

80 lm/W

IP32



PART NO.	POWER (W)	BEAM ANGLE
POLLUX-M-5-1FT	5	120°
POLLUX-M-15-1FT	15	120°
POLLUX-M-20-1FT	20	120°
POLLUX-M-25-1FT	25	120°

RFT-M

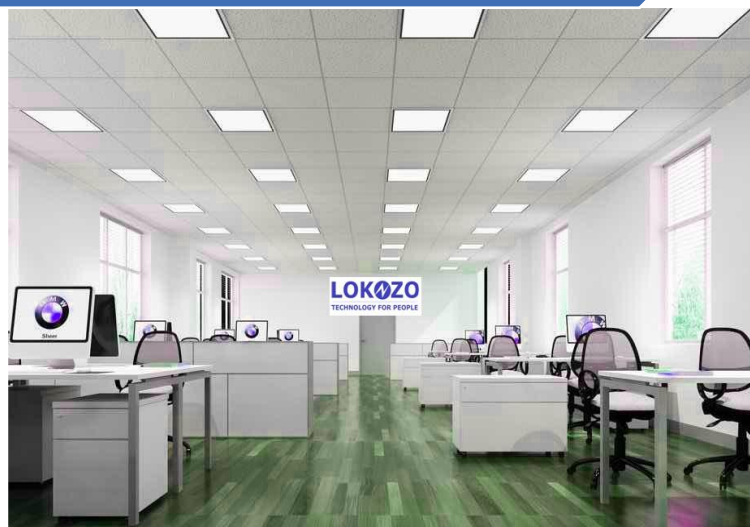
LED SURFACE MOUNT TUBE LIGHT WITH MS

80 lm/W

IP32



PART NO.	POWER (W)	BEAM ANGLE
RFT-M-18	18	120°
RFT-M-20	20	120°
RFT-M-24	24	120°



LED Batten Light is designed to replace the inefficient conventional down lights. It offers a comprehensive solution to most domestic and commercial application with its high performance and superior lumen output .

LED Recessed Troffer combining high efficiency and high quality light in performance and value optimized package.

FEATURES

Aerodynamic design and ultra sleek

Low weight , High efficiency

Very bright light

Wide ambient temperature range

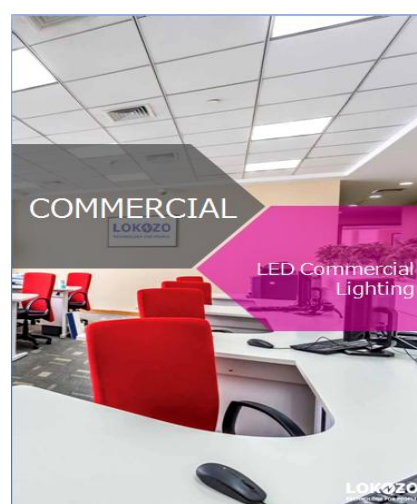
Maintenance Supervisor

Energy efficient & Better Lighting

TECHNICAL SPECIFICATIONS

LED Life Cycles	50,000 Hrs.
Correlated Colour Temperature	5500K to 6500K
Colour Rendering Index	>70
PF	>0.9
Finishing Colour	Matt White / Silver
Driver Integrated (Yes/No)	Yes
LED Used	OSRAM / Seoul / CREE

Architectural Lights



Other Sections

- Sports Lights
- Industrial Lights
- Infrastructural Lights
- Commercial Lights

ARCH-TECHTURE LIGHTS

GARDEN LIGHT

IRIS

LED GARDEN LIGHT

130 lm/W

IP66



TYPE-A



TYPE-B

PART NO.

IRIS A/B-Z-5
IRIS A/B-Z-10

POWER (W)

5
10

BEAM ANGLE

60°
60°

LENE

LED SPIKE LIGHT

130 lm/W

IP66



PART NO.

LENE-Z-5
LENE-Z-10
LENE-Z-5
LENE-Z-10

POWER (W)

5
10
5
10

BEAM ANGLE

30°
30°
40°
40°

SQUARE

LED FOOT LIGHT

120 lm/W

IP68



PART NO.

SQUARE-Z-5
SQUARE-Z-10
SQUARE-Z-15

POWER (W)

5
10
15

BEAM ANGLE

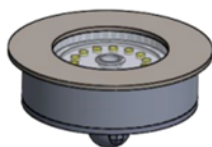
60°
60°
60°

AMBLE

LED GARDEN LIGHT

80 lm/W

IP32



PART NO.

AMBLE-Z-5
AMBLE-Z-9

POWER (W)

5
9

BEAM ANGLE

120°
120°



LED Garden lighting is mainly used for decoration and highlight in extension building frame, landscape lighting for gardens, parks, pools and fountains by offering colourful changing and magic environment.

Our innovative special lighting systems can help your everyday life in numerous ways, including many that you wouldn't have thought possible.

FEATURES

Aerodynamic design and ultra sleek

Low weight , High efficiency

Very bright light

Wide ambient temperature range

Maintenance Supervisor

Energy efficient & Better Lighting

TECHNICAL SPECIFICATIONS

LED Life Cycles	50,000 Hrs.
Correlated Colour Temperature	5500K to 6500K
Colour Rendering Index	>70
PF	>0.9
Finishing Colour	Matt White / Silver
Driver Integrated (Yes/No)	Yes
LED Used	OSRAM / Seoul / CREE

ARCH-TECHTURE LIGHTS

GARDEN LIGHT

ASTER

LED GARDEN LIGHT

110 lm/W

IP65



PART NO.

ASTER-Z-5

ASTER-Z-10

POWER (W)

5

10

BEAM ANGLE

120°

120°

DAISY

LED GARDEN LIGHT

110 lm/W

IP54



PART NO.

DAISY-Z-5

DAISY-Z-10

POWER (W)

5

10

BEAM ANGLE

120°

120°

POPPY

LED GARDEN LIGHT

110 lm/W

IP54



PART NO.

POPPY-Z-5

POPPY-Z-10

POWER (W)

5

10

BEAM ANGLE

120°

120°

ABHA

LED SOLAR LANTERN LIGHT

120 lm/W

IP68



PART NO.

ABHA-S-3

ABHA-S-5

POWER (W)

3

5

BEAM ANGLE

8

8



LED Garden lighting is mainly used for decoration and highlight in extension building frame, landscape lighting for gardens, parks, pools and fountains by offering colourful changing and magic environment.

Our innovative special lighting systems can help your everyday life in numerous ways, including many that you wouldn't have thought possible.

FEATURES

Aerodynamic design and ultra sleek

Low weight , High efficiency

Very bright light

Wide ambient temperature range

Maintenance Supervisor

Energy efficient & Better Lighting

TECHNICAL SPECIFICATIONS

LED Life Cycles	50,000 Hrs.
Correlated Colour Temperature	5500K to 6500K
Colour Rendering Index	>70
PF	>0.9
Finishing Colour	Matt White / Silver
Driver Integrated (Yes/No)	Yes
LED Used	OSRAM / Seoul / CREE

ARCH-TECHTURE LIGHTS

UNDERWATER LIGHT

ORLY

LED UNDERWATER LIGHT

130 lm/W

IP68



PART NO.	POWER (W)	INPUT	COLOUR
ORLY-S-10-30	10-30	12VAC	CW/WW/R/G/B
ORLY-S-50-100	50-100	24VAC	CW/WW/R/G/B



LED Underwater lights are for swimming pool, water fountain and any other water entertainment areas.

The LED light incorporates LEDs of maximum luminosity in red, blue and green.

Lamps are wall/floor mounted, fully filled with resin, completely waterproof.

SPLASH

LED UNDERWATER FOUNTAIN LIGHT

130 lm/W

IP68



PART NO.	POWER (W)	COLOUR
SPLASH-S-6	6	CW/WW/R/G/B
SPLASH-S-12	12	CW/WW/R/G/B
SPLASH-S-15	15	CW/WW/R/G/B
SPLASH-S-25	25	CW/WW/R/G/B

EILY

LED UNDERWATER RGB LIGHT

130 lm/W

IP68



PART NO.	POWER (W)	BEAM ANGLE
EILY-S-5	30	90°
EILY-S-50	50	60°

FEATURES

Aerodynamic design and ultra sleek

Low weight , High efficiency

Very bright light

Wide ambient temperature range

Maintenance Supervisor

Energy efficient & Better Lighting

STELLA-Z

LED UNDERWATER FISHING LIGHT

130 lm/W

IP68



PART NO.	POWER (W)	COLOUR
STELLA-Z-100-500	100-500	GREEN/WHITE
STELLA-Z-1000-2500	1000-2500	GREEN/WHITE

TECHNICAL SPECIFICATIONS

LED Life Cycles	50,000 Hrs.
Correlated Colour Temperature	5500K to 6500K
Colour Rendering Index	>70
PF	>0.9
Finishing Colour	Matt White / Silver
Driver Integrated (Yes/No)	Yes
LED Used	OSRAM / Seoul / CREE

ODORA

LED BOLLARD LIGHT

130 lm/W

IP66



PART NO.	POWER (W)	HEIGHT
ODORA-Z-10-2	10	2 FT
ODORA-Z-15-3	15	3 FT
ODORA-Z-10-2	18	4 FT
ODORA-Z-10-2	25	5 FT

ATLAS

LED BOLLARD LIGHT

130 lm/W

IP66



PART NO.	POWER (W)	HEIGHT
ATLAS-Z-10-1	10	1 FT
ATLAS-Z-15-2	15	2 FT
ATLAS-Z-20-3	20	3 FT
ATLAS-Z-20-4	20	4 FT

TULIP

LED BOLLARD LIGHT

130 lm/W

IP68



PART NO.	POWER (W)	HEIGHT
TULIP-Z-5-1	5	1 FT
TULIP-Z-10-1	10	1 FT
TULIP-Z-18-2	18	2 FT
TULIP-Z-18-3	18	3 FT

CROCUS

LED BOLLARD LIGHT

130 lm/W

IP66



PART NO.	POWER (W)	HEIGHT
CROCUS-Z-5-1	5	1 FT
CROCUS-Z-10-1	10	1 FT
CROCUS-Z-18-2	18	2 FT
CROCUS-Z-18-3	18	3 FT



LOKOZO LED Bollard Lights are a modern bollard range of light, ideal for amenity lighting for both commercial and domestic applications.

The best in modern landscape lighting, lighting Direct has an attractive range of hardwearing post

LED Bollard Lights are available with cool white and warm white LEDs.

FEATURES

Aerodynamic design and ultra sleek

Low weight , High efficiency

Very bright light

Wide ambient temperature range

Maintenance Supervisor

Energy efficient & Better Lighting

TECHNICAL SPECIFICATIONS

LED Life Cycles	50,000 Hrs.
Correlated Colour Temperature	5500K to 6500K
Colour Rendering Index	>70
PF	>0.9
Finishing Colour	Matt White / Silver
Driver Integrated (Yes/No)	Yes
LED Used	OSRAM / Seoul / CREE

ARCH-TECHTURE LIGHTS

WALL LIGHT

LEVO

LED WALL LIGHT

130 lm/W

IP66



PART NO.

POWER (W)

BEAM ANGLE

LEVO-Z-5	5	90°
LEVO-Z-10	10	90°
LEVO-Z-15	15	90°
LEVO-Z-20	20	90°

SOFY

LED BULK HEAD LIGHT

130 lm/W

IP66



PART NO.

POWER (W)

BEAM ANGLE

SOFY-Z-18	18	90°
SOFY-Z-30	30	90°

PANSY

LED WALL LIGHT

130 lm/W

IP68



PART NO.

POWER (W)

BEAM ANGLE

PANSY-Z-10	10	90°
PANSY-Z-20	20	90°

TULIP 132

LED DOUBLE WALL LIGHT WITH MS

130 lm/W

IP66



PART NO.

POWER (W)

BEAM ANGLE

TULIP 132-Z-2X6W	12	120°
TULIP 132-Z-2X10W	10	120°
TULIP 132-Z-2X15W	30	120°



The Wall lights are Flexible LED solutions offer unlimited design possibilities.

LOKOZO LED systems provide function and improved aesthetics, easier installation , less frequent maintenance and consistent performance in lighting designs.

FEATURES

Aerodynamic design and ultra sleek

Low weight , High efficiency

Very bright light

Wide ambient temperature range

Maintenance Supervisor

Energy efficient & Better Lighting

TECHNICAL SPECIFICATIONS

LED Life Cycles	50,000 Hrs.
Correlated Colour Temperature	5500K to 6500K
Colour Rendering Index	>70
PF	>0.9
Finishing Colour	Matt White / Silver
Driver Integrated (Yes/No)	Yes
LED Used	OSRAM / Seoul / CREE

ARCH-TECHTURE LIGHTS

POST TOP LIGHT

RIANTO

LED POST TOP LIGHT

130 lm/W

IP66



PART NO.

POWER (W)

HEIGHT

RIANTO-Z-30

10

2 FT

RIANTO-Z-50

50

3 FT

RIANTO-Z-80

80

4 FT

CHAPLIN

LED POST TOP LIGHT

130 lm/W

IP66



PART NO.

POWER (W)

HEIGHT

CHAPLIN-Z-12

12

1 FT

CHAPLIN-Z-18

18

2 FT

POMPON

LED POST TOP LIGHT

130 lm/W

IP68



PART NO.

POWER (W)

HEIGHT

POMPON-Z-30

30

1 FT

POMPON-Z-50

50

2 FT

POMPON-Z-80

80

3 FT

TULIP 109

LED POST TOP LIGHT

130 lm/W

IP66



PART NO.

POWER (W)

HEIGHT

TULIP-109-Z-30

30

2 FT

TULIP-109-Z-50

50

3 FT

TULIP-109-Z-80

80

4 FT



LED Post Top lights use high power LED as lighting source with high brightness, high thermal conductivity , good heat-radiation , small light decay , pure light , no ghosting, stable performance and quality advantages .

Eco-friendly and energy-saving , dust proof, no radiation and emitting heat , no mercury , lead and other pollution elements.

FEATURES

Aerodynamic design and ultra sleek

Low weight , High efficiency

Very bright light

Wide ambient temperature range

Maintenance Supervisor

Energy efficient & Better Lighting

TECHNICAL SPECIFICATIONS

LED Life Cycles	50,000 Hrs.
Correlated Colour Temperature	5500K to 6500K
Colour Rendering Index	>70
PF	>0.9
Finishing Colour	Matt White / Silver
Driver Integrated (Yes/No)	Yes
LED Used	OSRAM / Seoul / CREE

ARCH-TECHTURE LIGHTS

POST TOP LIGHT

TULIP 104

LED POST TOP LIGHT

130 lm/W

IP66



PART NO.	POWER (W)	HEIGHT
RIANTO-Z-30	10	2 FT
RIANTO-Z-50	50	3 FT
RIANTO-Z-80	80	4 FT

TULIP 105

LED POST TOP LIGHT

130 lm/W

IP66



PART NO.	POWER (W)	HEIGHT
TULIP-105-Z-30	30	1 FT
TULIP-105-Z-50	50	2 FT
TULIP-105-Z-80	80	3 FT

TULIP 106

LED POST TOP LIGHT

130 lm/W

IP68



PART NO.	POWER (W)	HEIGHT
TULIP-106-Z-30	30	1 FT
TULIP-106-Z-50	50	2 FT
TULIP-106-Z-80	80	3 FT

TULIP 107

LED POST TOP LIGHT

130 lm/W

IP66



PART NO.	POWER (W)	HEIGHT
TULIP-107-Z-30	30	1 FT
TULIP-107-Z-50	50	1 FT
TULIP-107-Z-80	80	2 FT



LED Post Top lights use high power LED as lighting source with high brightness, high thermal conductivity, good heat-radiation, small light decay, pure light, no ghosting, stable performance and quality advantages.

Eco-friendly and energy-saving, dust proof, no radiation and emitting heat, no mercury, lead and other pollution elements.

FEATURES

Aerodynamic design and ultra sleek

Low weight, High efficiency

Very bright light

Wide ambient temperature range

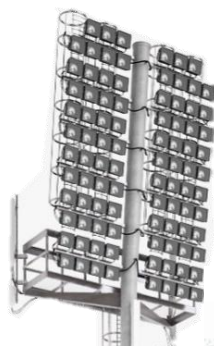
Maintenance Supervisor

Energy efficient & Better Lighting

TECHNICAL SPECIFICATIONS

LED Life Cycles	50,000 Hrs.
Correlated Colour Temperature	5500K to 6500K
Colour Rendering Index	>70
PF	>0.9
Finishing Colour	Matt White / Silver
Driver Integrated (Yes/No)	Yes
LED Used	OSRAM / Seoul / CREE

LOKOZO POLE



LOKOZO
TECHNOLOGY FOR PEOPLE

OUR MISSION ▼

Harnessing the power of the
SUN with energy efficient **LIGHTING**
towards a greener planet

**INDIAN
INNOVATIVE
PRODUCT
MANUFACTURER**

WHY LOKOZO?

- MAKE IN INDIA PRODUCT
- PRODUCT WITH PRECISION ENGINEERING
- ALL INDIA DISTRIBUTOR SUPPORT
- NABL APPROVED LAB TESTED PRODUCT
- IN-HOUSE PRODUCT DESIGNED AND DEVELOPED

AREA OF LIGHTING

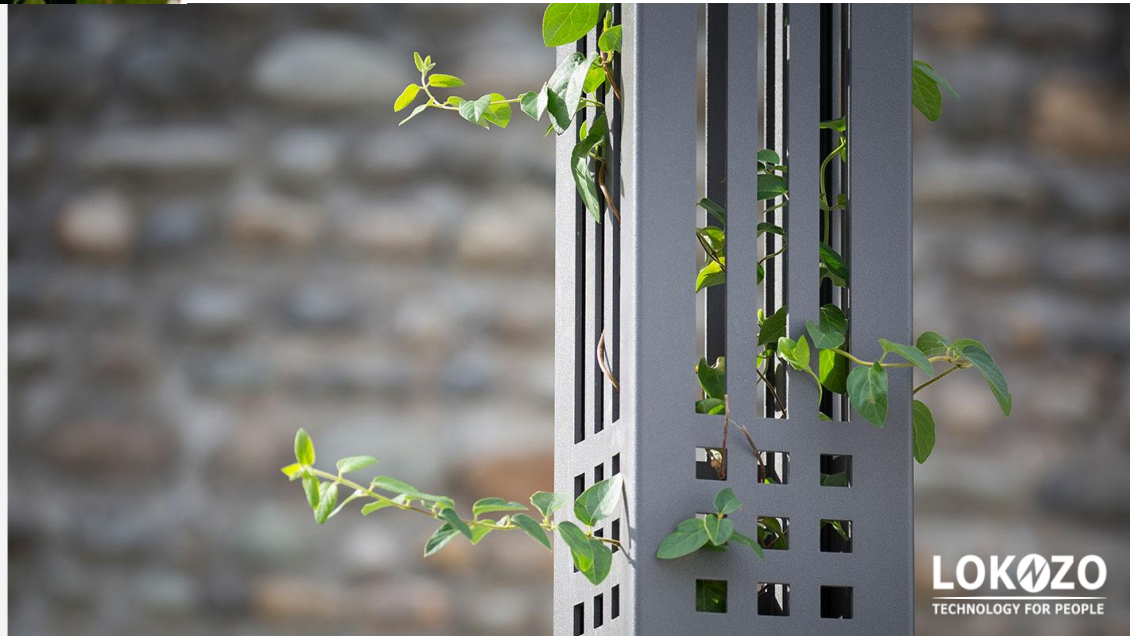
- INDUSTRIAL LIGHTING
- SPORTS LIGHTING
- INFRASTRUCTURAL LIGHTING
- AVIATION LIGHTING
- COMMERCIAL LIGHTING
- GARDEN LIGHTING
- HORTICULTURAL LIGHTING

LOKOZO
TECHNOLOGY FOR PEOPLE





CONTEMPORARY LIGHTING POLES



CONTEMPORARY LIGHTING POLES

This is a customizable pattern and the internal illumination enhances the model with a distinctive look, giving off a cascading light effect. The practical side is that the light source is conveniently protected.

Exclusive trapezoidal CRCA Sheet with internal structure. Fretted on 4 sides from 4ft up to 10ft from the top. Maximum cut out height: 10ft.

Possible variation: Opening(s) in the upper body to add extra floodlight.

Insulating rings on the 4 anchoring oblongs to avoid any contact with galvanized steel bolts.

Finishing: Polyester powder coating: more than 100 colors available, plus special finish. Natural anodization available.

Lighting element(s)

Source: LED

LED luminaire with integrated LED driver and heat sink.

Upon request: Additional floodlight on top.

Power: 16 W, 33 W

Outgoing flow: 2170 – 4380 lm

Lighting efficiency: 136 – 141 lm/W

Color temperature: 3000 K, 4000 K

CRI >70

Optic: Symmetrical, Asymmetrical



DECORATIVE STREET LIGHT POLES

We manufacture swaged poles from 5 meters to 12 meters (height) that find application in Street Lighting, Telecom Aerial Cabling, Power Distribution lines and Signboards, among others.

Key benefits:

- a) Fireproof, immune to insect infestation and no pole rot
- b) Weighs 50-70% less than comparable concrete structures
- c) Customization
- d) Elongation – up to 85% with no shrinkage
- e) Free of copper wire grounding
- f) Fully recyclable and non-toxic
- g) Steel pipes manufactures as per ASTM specification
- h) Capable of galvanizing all sizes of poles in Single Dip



STREET LIGHT POLES

We manufacture swaged poles from 5 meters to 12 meters (height) that find application in Street Lighting, Telecom Aerial Cabling, Power Distribution lines and Signboards, among others.

Key benefits:

- a) Fireproof, immune to insect infestation and no pole rot
- b) Weighs 50-70% less than comparable concrete structures
- c) Customization
- d) Elongation – up to 85% with no shrinkage
- e) Free of copper wire grounding
- f) Fully recyclable and non-toxic
- g) Steel pipes manufactures as per ASTM specification
- h) Capable of galvanizing all sizes of poles in Single Dip

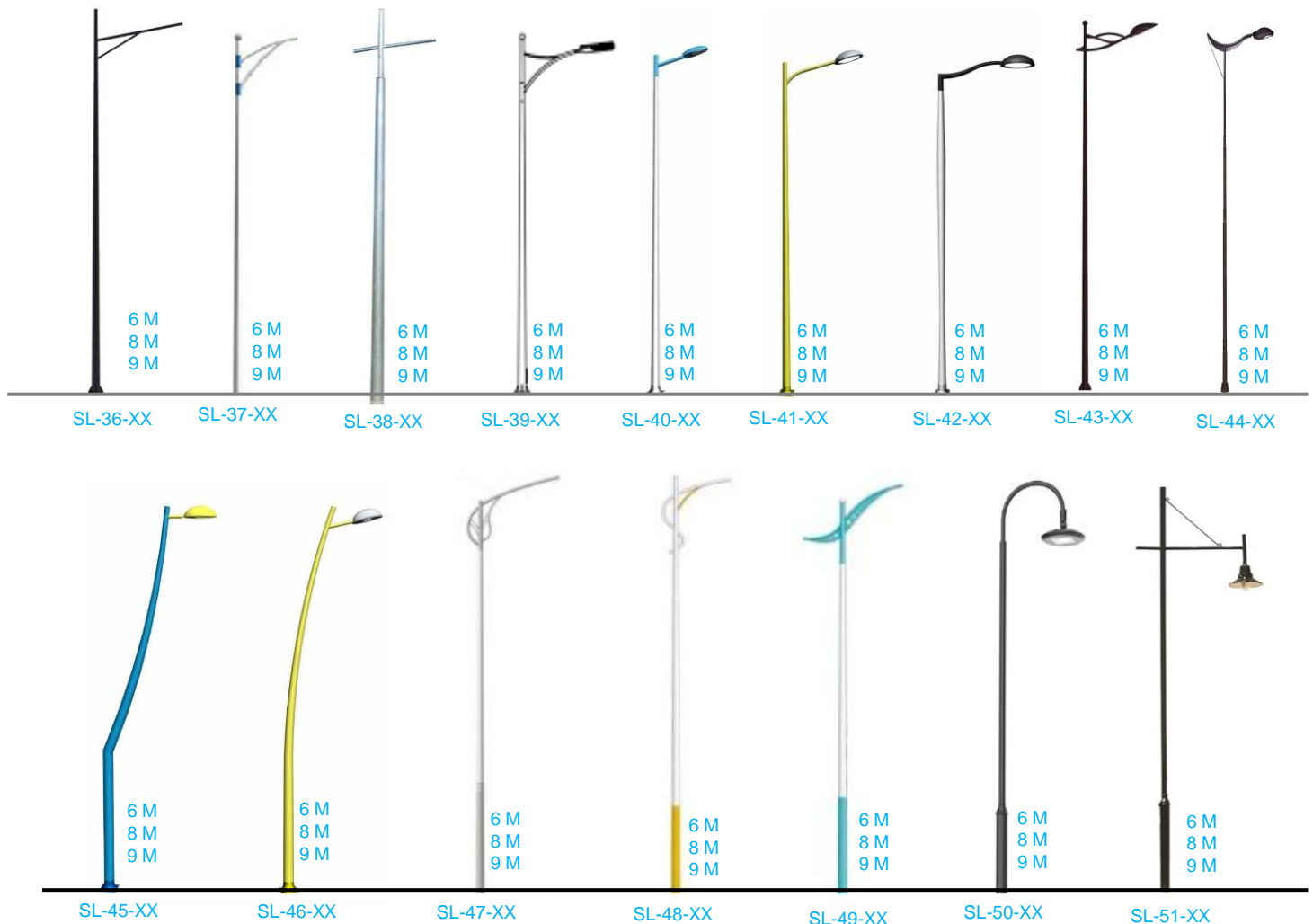


STREET LIGHT POLES

We manufacture swaged poles from 5 meters to 12 meters (height) that find application in Street Lighting, Telecom Aerial Cabling, Power Distribution lines and Signboards, among others.

Key benefits:

- a) Fireproof, immune to insect infestation and no pole rot
- b) Weighs 50-70% less than comparable concrete structures
- c) Customization
- d) Elongation – up to 85% with no shrinkage
- e) Free of copper wire grounding
- f) Fully recyclable and non-toxic
- g) Steel pipes manufactures as per ASTM specification
- h) Capable of galvanizing all sizes of poles in Single Dip

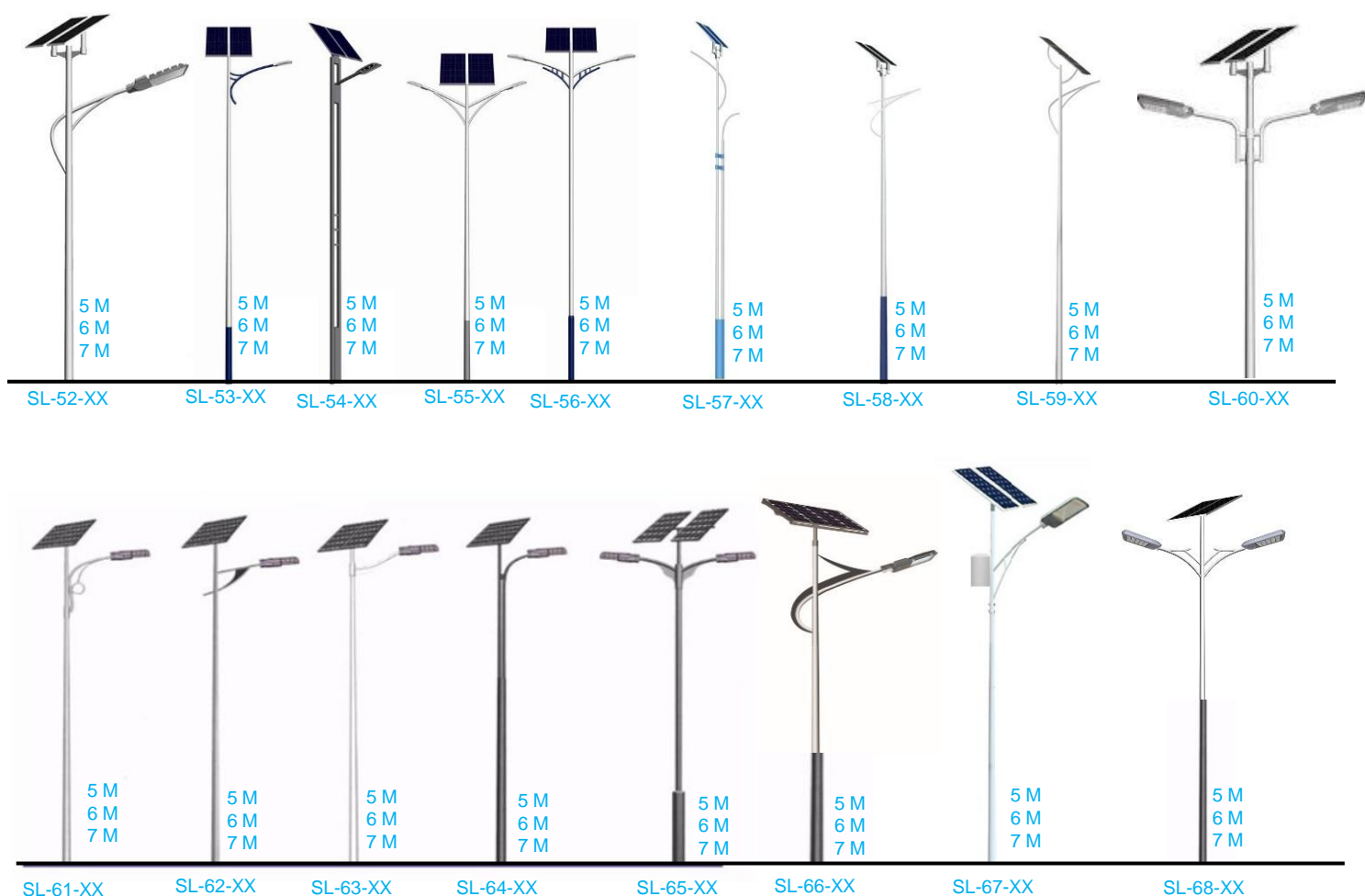


SOLAR STREET LIGHT POLES

We manufacture swaged poles from 5 meters to 12 meters (height) that find application in Street Lighting, Telecom Aerial Cabling, Power Distribution lines and Signboards, among others.

Key benefits:

- a) Fireproof, immune to insect infestation and no pole rot
- b) Weighs 50-70% less than comparable concrete structures
- c) Customization
- d) Elongation – up to 85% with no shrinkage
- e) Free of copper wire grounding
- f) Fully recyclable and non-toxic
- g) Steel pipes manufactures as per ASTM specification
- h) Capable of galvanizing all sizes of poles in Single Dip

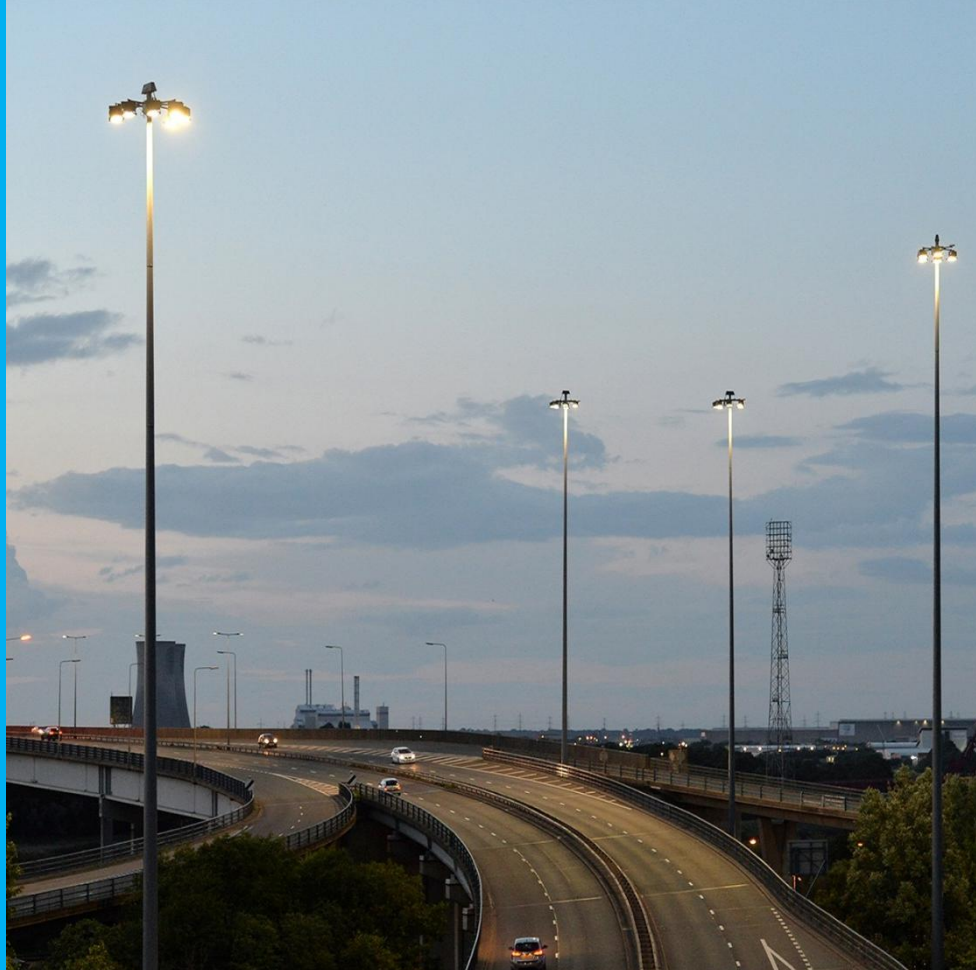


HIGH MAST POLES

High mast lighting is the most efficient method of lighting large areas with the minimum number of obstructions. LokoZo high mast achieved that distinction by continuous improvement, investment and innovation. Our experience is unequalled in the number of high masts we have manufactured and installed over the past 7 years.

APPLICATION

- Airports
- Hospital
- Highway
- Sports ground
- Parking Lots



TECHNICAL SPECIFICATION OF MOTORIZED HIGH MAST

SI No.	Description	12m Mast	16m Mast	20m Mast	25m Mast	30m Mast
1	DESIGNED WIND SPEED	160 km/h	160 km/h	160 km/h	160 km/h	160 km/h
2	MATERIAL	Hot Rolled MS Sheet as per BSEN 10025	Hot Rolled MS Sheet as per BSEN 10025	Hot Rolled MS Sheet as per BSEN 10025	Hot Rolled MS sheet as per BSEN 10025	Hot Rolled MS sheet as per BSEN 10025
3	NO. OF SECTIONS	2	2	2 or 3	3	3
4	BOTTOM THICKNESS	3 mm	3 mm	4 mm	4 mm	5 mm
5	MIDDLE THICKNESS	-	-	4 mm	3 mm	4 mm
6	TOP THICKNESS	3 mm	3 mm	3 mm	3 mm	4 mm
7	BOTTOM SECTION LENGTH	6250 mm	8250 mm	7000 mm	8700 mm	10500 mm
8	MIDDLE SECTION LENGTH	-	-	7000 mm	8700 mm	10500 mm
9	TOP SECTION LENGTH	6250 mm	8250 mm	7000 mm	8700 mm	10500 mm
10	CROSS SECTION	16 Sides Polygon	18 Sides Polygon	20 Sides Polygon	20 Sides Polygon	20 Sides Polygon
11	TOP DIAMETER	160 mm	160 mm	150 mm	165 mm	200 mm
12	BOTTOM DIAMETER	320 mm	350 mm	400 mm	490 mm	600 mm
13	BASE PLATE	Ø500mm x 20mm Thk	Ø540mm x 25mm Thk	Ø600mm x 25mm Thk	Ø740mm x 25mm Thk	Ø850mm x 25mm Thk
14	PITCH CIRCLE DIA	410 mm	460 mm	560 mm	620 mm	730 mm
15	GALVANIZING THICKNESS	As per IS 2629 - Min 70 micros	As per IS 2629 - Min 70 micros	As per IS 2629 - Min 70 micros	As per IS 2629 - Min 70 micros	As per IS 2629 - Min 70 micros
16	FOUNDATION BOLTS	M24 x 900 mm	M24 x 900 mm	M24 x 1000 mm	M24 x 1200 mm	M24 x 1200 mm
17	NO OF FOUNDATION BOLTS	6 nos	8 nos	12 nos	12 nos	16 nos
18	SUGGESTED TYPE OF FOUNDATION	Open Raft Shallow footing	Open Raft Shallow footing	Open Raft Shallow footing	Open Raft Shallow footing	Open Raft Shallow footing
19	SOIL BEARING CAPACITY	10 Tons/m²	10 Tons/m²	10 Tons/m²	10 Tons/m²	10 Tons/m²
20	DEPTH MINIMUM (RECOMMENDED)	1500 mm	1700 mm	1700 mm	1700 mm	1700 mm
21	NO OF DRUMS IN WINCH	2 nos	2 nos	2 nos	2 nos	2 nos
22	MATERIALS /DIAMETER OF MAIN ROPE	Stainless steel/6 mm	Stainless steel/6 mm	Stainless steel/6 mm	Stainless steel/6 mm	Stainless steel/8 mm
23	NO OF FLOOD LIGHTS	6 nos / 8 Nos	8 nos / 12 Nos	9 nos /12 Nos	12 nos / 16 Nos	16 Nos / 20 Nos

* PLEASE CONTACT LOKOZO IF DIFFERENT SIZES ARE REQUIRED

SPORTS & STADIUM POLES

For Stadium Flood Lighting, the most demanding lighting requirements are those for live television coverage with the HD transmission. Lokozo Stadium Light provides excellent visibility and visual comfort designed with multisided for greater strength. The pole can be customized to accommodate variable number of light fittings based on your requirement.

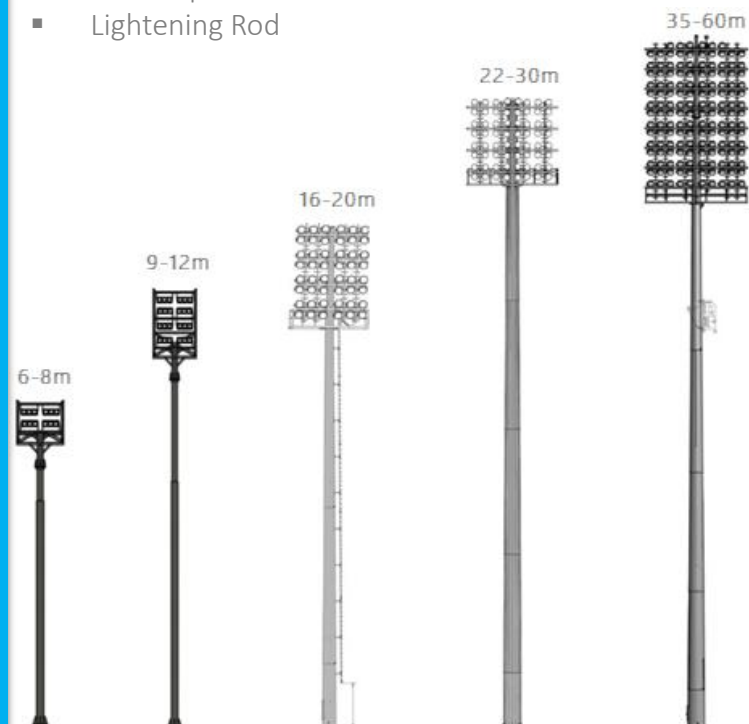
Stadium lighting masts are designed with fixed head frame for mounting a large concentration of sports lighting luminaires. The height of the mast and the number of flood lights are based on the lighting design. Our structural design team has wide experience in manufacturing and supplying stadium masts.

Lokozo also has an Optical design team. Depending on the field size, the location of the pole and the LUX requirement on the field, Lokozo can provide **OPTICAL SIMULATION** and suggest the height of the pole and the Luminaire requirement. The Stadium lighting masts are custom designed based on the lighting design and available site constraints.

LOKOZO
TECHNOLOGY FOR PEOPLE

VARIANTS BASED ON CUSTOMER REQUIREMENT:

- The Sports Lighting Pole Series is available in various length, diameters and hole arrangements.
- Multisided or Tapered round variations.
- The Sports Lighting Pole Series is available in base plate mounted or direct bury installed.
- All Sports Lighting Poles are hot dip galvanized according to EN 1461, and can also be powder coated or painted.
- Additional service doors.
- Ladders or Climb Pins.
- Arms and brackets.
- Service platform.
- Lightening Rod



SPORTS & STADIUM HEADFRAMES

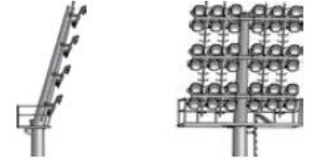
All headframe and ladder systems incorporate a security fall-arrest cable in conformity with EN353-1 and EN353-2

HEADFRAME CONFIGURATIONS

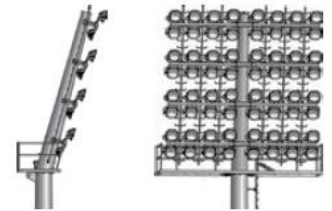
20 Nos Floodlight Configuration



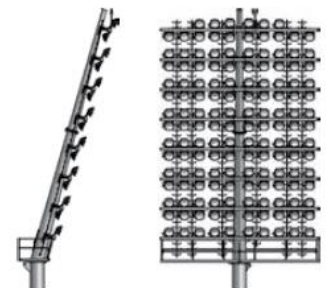
36 Nos Floodlight Configuration



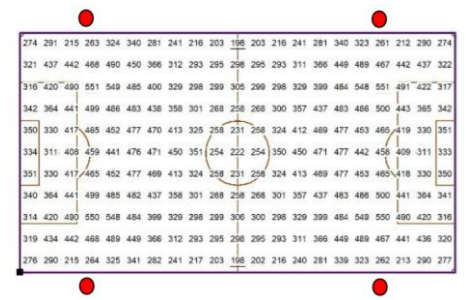
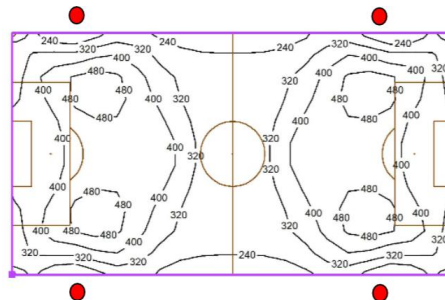
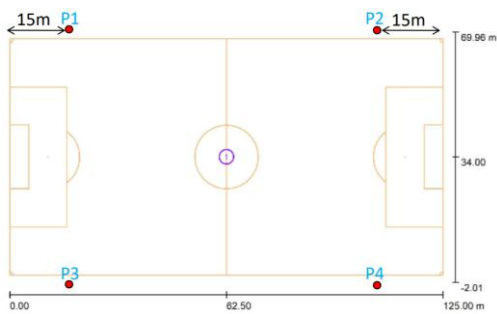
64 Nos Floodlight Configuration



150 Nos Floodlight Configuration



OPTICAL SIMULATION FOR FOOTBALL FIELD



Solar Street Light

1 Year Warranty



Specification:

Model Name	Solar Owl Street Light 10 Watt	
Model No	TTASLM10W	
Material	ABS + PC	
Sensor	IR Sensor	
Solar	Solar Panel	5V 9 Watt
	Life Span	25 Years
Battery	Type	LifePO4
	Capacity	3.2V,18 AH
LED	Lumens	10 W, 1500 LM
	Life Span	50000 Hrs
	Brand	Philips
Lighting Time	1 Night	



Solar Street Light

1 Year Warranty



Specification:

Model Name	Solar Owl Street Light 15 Watt	
Model No	TTASLM15W	
Material	Aluminum Die Cast + Metal + PC	
Sensor	IR Sensor	
Solar	Solar Panel	5V 14Watt
	Life Span	25 Years
Battery	Type	LifePO4
	Capacity	3.2V,24 AH
LED	Lumens	15 W, 2200 LM
	Life Span	50000 Hrs
	Brand	Philips
Lighting Time	1 Night	

Solar Street Light

2 Years Warranty



Specification:



Model Name	Solar Bat Street Light 15 Watt	
Model No	TTISL15W	
Controller	MPPT	
Material	Aluminum	
Solar	Solar Panel	30 Watt
	Life Span	25 Years
Battery	Type	LifePO4
	Capacity	3.2V,24 AH
LED	Lumens	15 W, 2400 LM
	Life Span	50000 Hrs
Lighting Time	1 Night	

Solar Street Light

2 Years Warranty



Specification:



Model Name	Solar Hawk Street Light 20 Watt	
Model No	TTASL20W	
Sensor	IR Sensor	
Material	Aluminum	
Solar	Solar Panel	26 Watt
	Life Span	25 Years
Battery	Type	LifePO4
	Capacity	3.2V,30 AH
LED	Lumens	20 W, 3200 LM
	Life Span	50000 Hrs
Lighting Time	1 Night	

Solar Street Light

2 Year Warranty



Specification:

Model Name	Solar Nightjars Street Light 20 Watt	
Model No	TTSSIL20W	
Material	Aluminum Die Cast + Metal + PC	
Solar	Solar Panel	5V 40Watt
	Life Span	25 Years
Battery	Type	LifePO4
	Capacity	6.4 V,40 AH
LED	Lumens	20 W, 3200 LM
	Life Span	50000 Hrs
	Brand	Philips
Lighting Time	1 Night	

Solar Street Light

2 Years Warranty



Specification:

Model Name	Solar Hawk Street Light 30 Watt	
Model No	TTASL30W	
Sensor	IR Sensor	
Material	Aluminum	
Solar	Solar Panel	42 Watt
	Life Span	25 Years
Battery	Type	LifePO4
	Capacity	3.2V,50 AH
LED	Lumens	30 W, 5600 LM
	Life Span	50000 Hrs
Lighting Time	1 Night	

Solar Street Light

2 Year Warranty



Specification:



Model Name	Solar Nightjars Street Light 30 Watt	
Model No	TTSSIL30W	
Controller	MPPT	
Material	Aluminum Die Cast + Metal + PC	
Solar	Solar Panel	10V 50Watt
	Life Span	25 Years
Battery	Type	LifePO4
	Capacity	6.4 V,60 AH
LED	Lumens	30 W, 4800 LM
	Life Span	50000 Hrs
	Brand	Philips
Lighting Time	1 Night	

Solar Street Light

2 Year Warranty



Specification:



Model Name	Solar Nightjars Street Light 40 Watt	
Model No	TTSSLP40W	
Controller	MPPT	
Material	Aluminum Die Cast + Metal + PC	
Solar	Solar Panel	18V 100Watt
	Life Span	25 Years
Battery	Type	LifePO4
	Capacity	12.8 V,75 AH
LED	Lumens	40 W, 6400 LM
	Life Span	50000 Hrs
Lighting Time	1 Night	

Solar Edison Garden Light

1 Year Warranty



Specification:



Model Name	Solar Edison Garden Light	
Model No	TTSEMGL2W	
Material	ABS	
Product Size	53*14*14 CM	
Solar	Solar Panel	2 V
	Life Span	10 Years
Battery	Type	Ni-MH
	Capacity	900 mAh
	Life Span	2 Years
LED	MCD	15000
	Life Span	50000 Hrs
Lighting Time	6 Hours	

Solar European Pathway Light

1 Year Warranty



Specification:



Model Name	Solar European Pathway Light	
Model No	TTSEMP2W	
Material	ABS	
Product Size	38*11*11 CM	
Solar	Solar Panel	2 V
	Life Span	10 Years
Battery	Type	Ni-MH
	Capacity	500 mAh
	Life Span	2 Years
LED	MCD	15000
	Life Span	50000 Hrs
Lighting Time	6 Hours	

Solar European Pearl Garden Light

1 Year Warranty



Specification:



Model Name	Solar European Pearl Garden Light	
Model No	TTSEPL2W	
Material	ABS	
Product Size	41*11*11 CM	
Solar	Solar Panel	2 V
	Life Span	10 Years
Battery	Type	Ni-MH
	Capacity	500 mAh
	Life Span	2 Years
LED	MCD	15000
	Life Span	50000 Hrs
Lighting Time	6 Hours	

Solar Vintage Garden Light

1 Year Warranty



Specification:



Model Name	Solar Vintage Garden Light	
Model No	TTSVMGL2W	
Material	ABS	
Product Size	45*15*15 CM	
Solar	Solar Panel	2 V
	Life Span	10 Years
Battery	Type	Ni-MH
	Capacity	600 mAh
	Life Span	2 Years
LED	MCD	15000
	Life Span	50000 Hrs
Lighting Time	6 Hours	

Solar Garden Light

1 Year Warranty



Specification:



Model Name	Solar Garden Light – Warm White	
Model No	TTSGLWW1W	
Material	Aluminum + ABS	
Product Size	80*16*16 CM	
Solar	Solar Panel	5.5V, 1.6W
	Life Span	15 Years
Battery	Type	Li-ion
	Capacity	2000 mAh
	Life Span	5-6 Years
LED	Lumens	1.6W 160 LM
	Life Span	50000 Hrs
Lighting Time	1 Night	

Solar Gate Light

1 Year Warranty



Specification:



Model Name	Solar Gate Light – Warm White	
Model No	TTSGL2W	
Material	Aluminum + ABS	
Product Size	26.50*15.50*15.50 CM	
Solar	Solar Panel	5.5V, 1.5W
	Life Span	15 Years
Battery	Type	Li-ion
	Capacity	2000 mAh
	Life Span	5-6 Years
LED	Lumens	1.5W 150 LM
	Life Span	50000 Hrs
Lighting Time	1 Night	

Solar Emergency Light

1 Years Warranty



Specification :



Model Name	Solar Emergency Tube Light	
Model No	TTSELT5W	
Material	Aluminium + PC + ABS	
Product Size	32*32*220mm	
Solar	Solar Panel	5W
	Life Span	15 Years
Battery	Type	Li - ion
	Capacity	2600mAh
	Life Span	5~6 Years
LED	Lumens	5W 400LM
	Life Span	50000 Hrs
Lighting Time	1 Night	



Twilight Renewable Energy

Clean Green Electricity

Created By
Sanjay Kumar D N

ABOUT US

- We TREE are a Bangalore based green energy promoters
- Initiated with a goal to return something to our Environment
- Excellent reviews from our obliged Customers
- We provide high quality solar products with new technology involved to be energy independent
- Our vision is to be the obvious choice for solar solution with innovative execution and reliable service
- We expertise in energy auditing & advising the best solution for costumers expectation
- Our Products & Services are for Solar Power Plant
On/Off-Grid, Street Light, Fencing, Water Heater, Heat Pump, Light Kits, Lanterns, Solar Home Systems, Agricultural Pumps

Introduction

It is proud to introduce, Twilight Renewable Energy, as reliable solar energy solution provider. Being a profound trader, supplier, service provider and distributor of Solar Ups System, Portable Solar Ups System, we have become the prominent choice of numerous residential and commercial sectors. With our products like Solar Ups System, Portable Solar Ups System, etc., we are providing greener energy, which is saving the cost and promoting sustainable development. The range is widely acclaimed in the market due to its ability to withstand high temperature for long time, cost effectiveness, high durability and environment friendly nature. We provide our assortment in both standard and custom finishes, suiting to the exact demand of the client.

The long-term goal of our company is to focus on being the pioneer in meeting the energy requirements of diversified industries. Hence, we procure our range from certified vendors or manufacturers who use high grade of raw material in its production. The vendors consider the current trend of the industry and accordingly develop the product. Every gamut is sourced from our manufacturers by the team of experienced procurement agents in stipulated period of time. These procured products like Solar Ups System, Portable Solar Ups System, etc. are kept in spacious warehouse which is safe and retain their original condition. In addition to this, our storeroom is properly ventilated and cleaned at regular interval of time.

What's Solar Energy?

- Solar energy originates with the thermonuclear fusion reactions occurring in the sun.
- Represents the entire electromagnetic radiation (Visible light, infrared, ultraviolet, x-rays and radio waves).
- This energy consists of radiant light and heat energy from the sun.
- Out of all energy emitted by sun only a small fraction of energy is absorbed by the earth.
- Just this tiny fraction of the sun's energy is enough to meet all your power needs.

Why Solar Energy?

While a majority of the world's current electricity supply is generated from fossil fuels such as coal, oil and natural gas, these traditional energy sources face a number of challenges including rising prices, security concerns over dependence on imports from a limited number of countries which have significant fossil fuel supplies, and growing environmental concerns over the climate change risks associated with power generation using fossil fuels. As a result of these and other challenges facing traditional energy sources, governments, businesses and consumers are increasingly supporting the development of alternative energy sources and new technologies for electricity generation. Renewable energy sources such as solar, biomass, geothermal, hydroelectric and wind power generation have emerged as potential alternatives, which address some of these concerns.

As opposed to fossil fuels, which draw on finite resources that may eventually become too expensive to retrieve, renewable energy sources are generally unlimited in availability. Solar power generation has emerged as one of the most rapidly growing renewable sources of electricity.

- The fossil fuels are non renewable energy sources so we cannot depend on them forever
- Though Dr. A. P. J. Abdul Kalam said that the nuclear energy is clean and green energy, there are always some problems associated with it
- So the only option we have is solar energy because it is easily reliable, abundant, non polluting and salient source of electricity and also low maintenance & long lasting energy

How solar energy is utilized

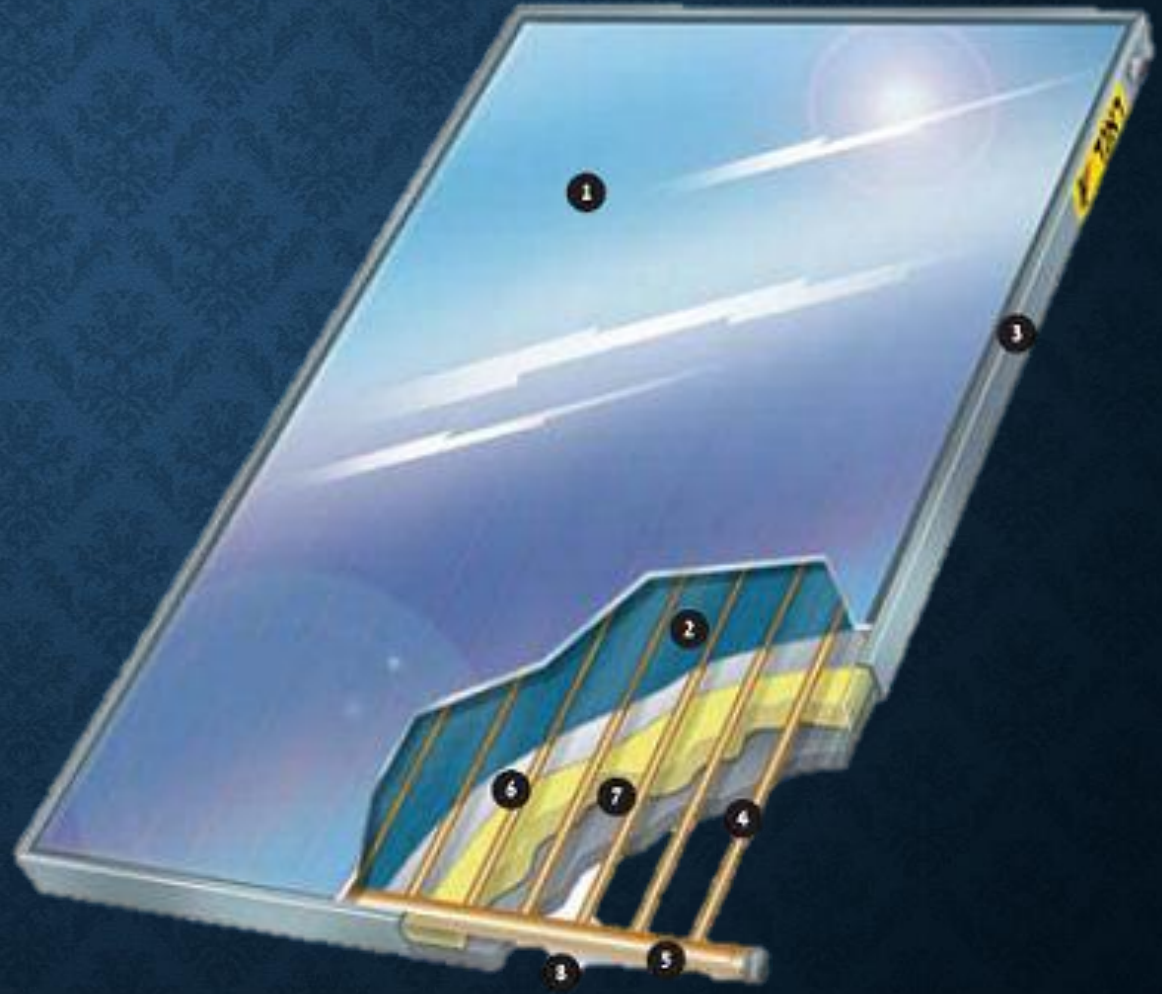
- Solar Thermal Energy
Solar Water Heater
- Solar Electrical Energy
Electricity Generation using Photovoltaic Cells
- Solar Lamps
- Solar Street Light
- Solar Fencing for security purpose
- Solar Pumping application for agricultural purposes

Solar Thermal Energy

- Solar Thermal technologies involve harvesting energy from the sun for heating water
- A solar thermal collector collects heat by absorbing sunlight
The term Solar Collector refers Solar hot water panels
- Two Types of them are
Evacuated – Tube Collectors
Flat – Plate Collectors

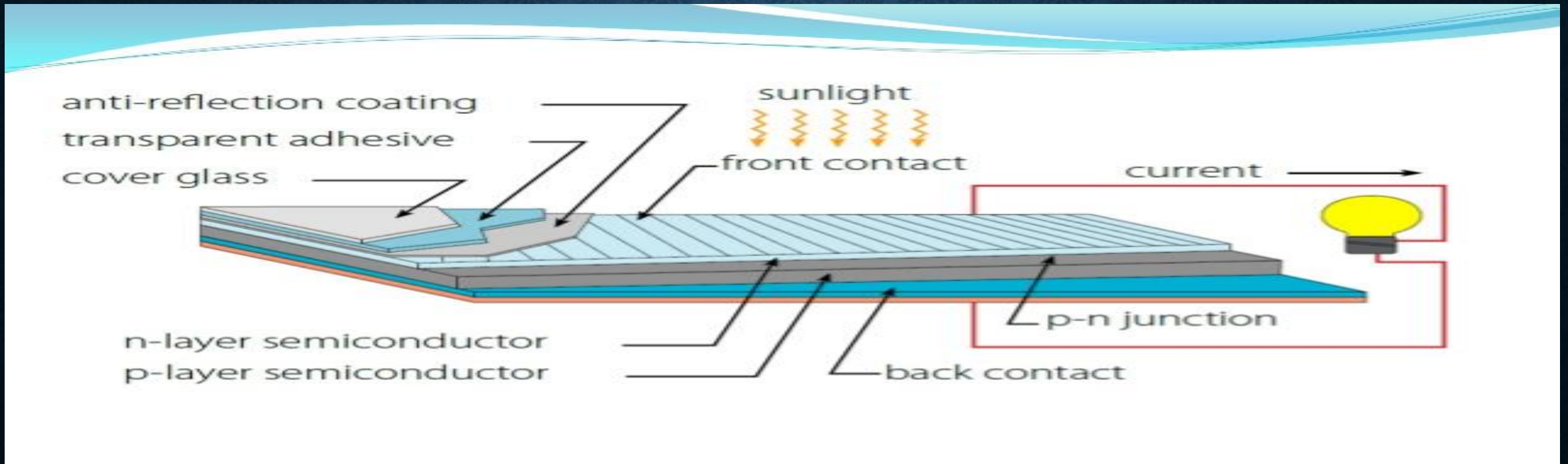
Solar Collector

- Glass on outside
- Absorbent on inside
- Circulating Fluid



Solar Electrical Energy

- Converting solar energy directly into electrical energy
- Device used is called solar panel
- Solar panel is a group of solar cell
- Solar cells work on the principle of photoelectric effect



The Types Of Solar Electric Systems

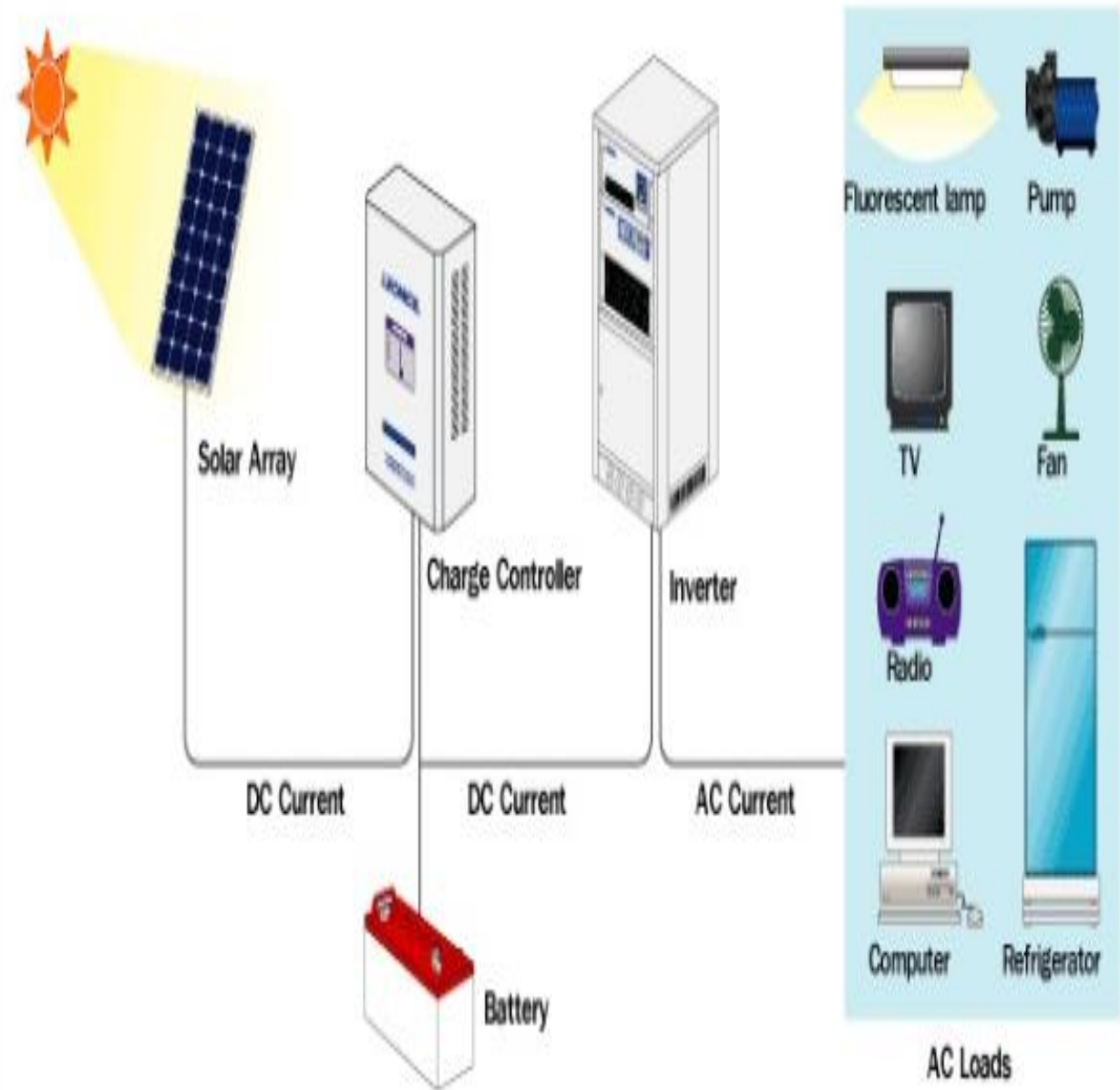
- **The Stand Alone System**

- ❖ **Standalone or Off-grid solar power system consists of solar panels & battery bank**
- ❖ **Used in rural areas or in the regions where there is no or less access to the utility grid or to save power with backup facility**
- ❖ **Very good at giving economical electricity**

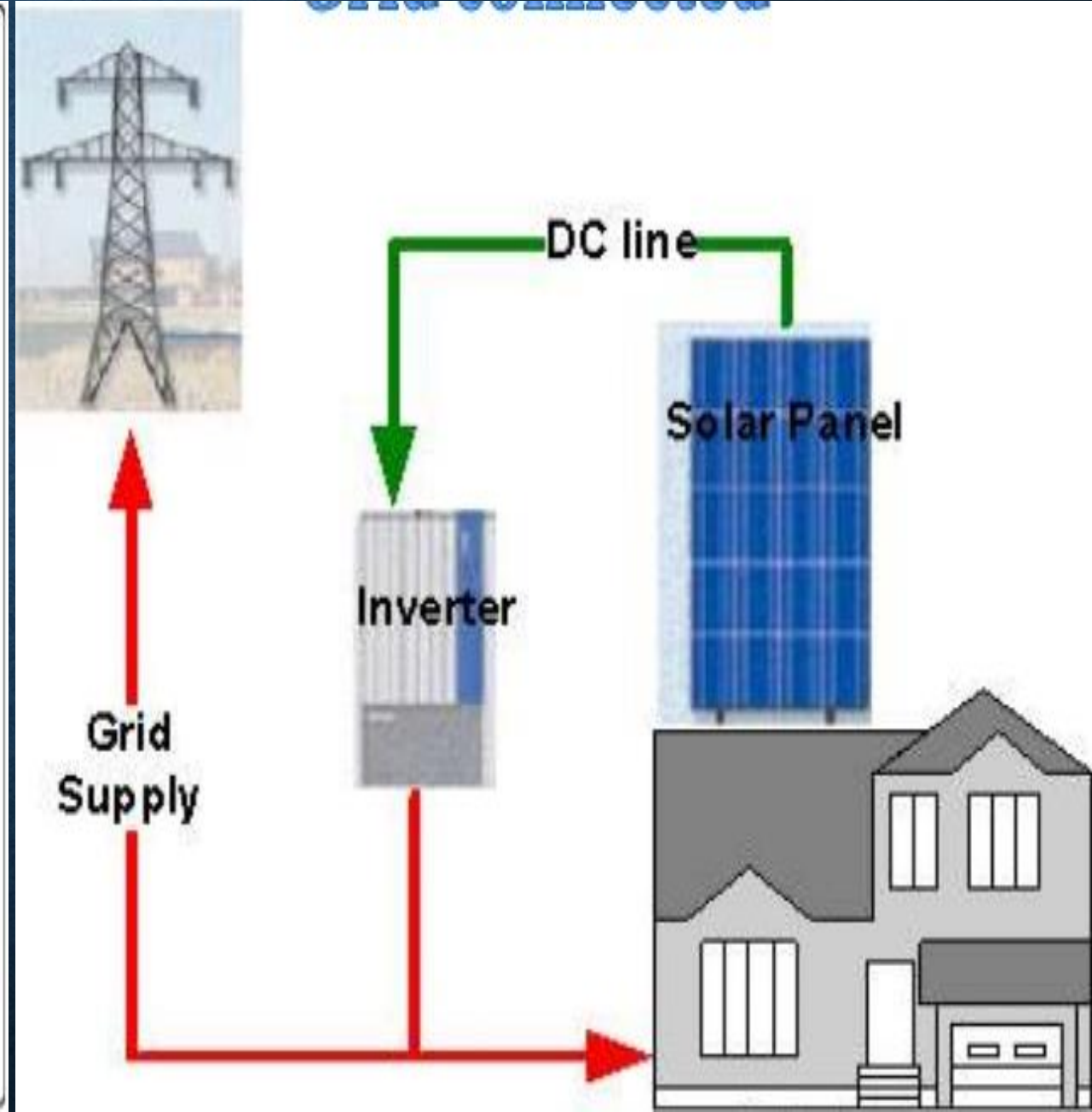
- **Grid-Tie Solar System**

- **Very useful for homes that are already linked to the utility grid**
- **Primary advantage is the cheap price for utility**
- **The system needs to be wired with an inverter that converts to AC electricity, which is needed for linking to the utility grid**

Stand Alone / Off-grid



Grid Connected



Uses of Solar Power Plant

- **Domestic Use**

- ☐ Solar Panels can be installed to run all commodities except heating & Cooling applications
- ☐ Save Power bill as during day hours every load will run with the help of solar power and during night 70% the power will be provided by the battery.
- ☐ Economically if customer wants to run fan and light we will provide light, fan and the solar equipment for handy price

- **Commercial Use**

- ☐ On an office building, roof areas can be covered with solar panels and use the bottom space as cafeteria/as required
- ☐ Remote buildings such as schools, hospitals communities can make use of solar energy
- ☐ In developing countries, these solar panels are very much useful
- ☐ Even on highways, gardens, main entrance for each interval a Solar street has to be installed

Advantages of Solar Power Plant

- **The power source of the sun is absolutely free**
- **The production of solar energy produces no pollution**
- **The technological advancements in solar energy systems have made them extremely cost effective**
- **Most systems do not require any maintenance during their lifespan, which means you never have to put money into them**
- **Long lasting and can be used anywhere**
- **Solar panels can be upgraded, when there is demand for more energy**

Advantages over other forms of electricity generation

- **Reduced Dependence on Fossil Fuels** Solar energy production does not require fossil fuels and is therefore less dependent on this limited and expensive natural resource
- **Environmental Advantages** Solar power production generates electricity with a limited impact on the environment as compared to other forms of electricity production.
- **Matching Peak Time Output with Peak Time Demand** Solar energy can effectively supplement electricity supply from an electricity transmission grid, such as when electricity demand peaks in the summer
- **Modularity and Scalability** As the size and generating capacity of a solar system are a function of the number of solar modules installed, applications of solar technology are readily scalable and versatile.

- **Government Incentives** A growing number of countries have established incentive programs for the development of solar and other renewable energy sources, such as
 - (i) Net metering laws that allow on-grid end users to sell electricity back to the grid at retail prices
 - (ii) Direct subsidies to end users
 - (iii) Low interest loans for financing solar power systems and tax incentives
 - (iv) Government standards that mandate minimum usage levels of renewable energy sources.



Solar Home Lighting System (SHLS) harnesses the sun's energy to light up your home and power your small appliances. With benefits that extend both to your wallet and to the environment, TREE's Solar Home Lighting System is not just a 'brilliant' idea; it is a 'responsible' one.

Providing illumination powered from the sun's renewable energy, the solar cells in the system convert the sun's energy directly to electricity. This electricity is stored in the battery and used for lighting whenever required.



Stand-Alone Solar Street Light

Most solar lights turn on and turn off automatically by sensing outdoor light using solar panel voltage. Solar streetlights are designed to work throughout the night. Many can stay lit for more than one night if the sun is not available for a couple of days.

Older models included lamps that were not fluorescent or LED. Solar lights installed in windy regions are generally equipped with flat panels to better cope with the winds.



All in One Solar Street Light

New Integrated Solar led Street Light is an extremely versatile and robust solar parking lot light, it is perfect for all kind of weather conditions. Here our own Production of this integrated solar light. This compact solar powered street light provides extra lighting easily in no time. Installation is straightforward; only 4 bolts need to be tightened onto a pole (pole not included). The unit can also be wall mounted. No trenching or connection to the electric grid is needed. The all-in-one LED solar street light is perfect for retrofitting old electric powered fixture or new installations.



Service Providers for Solar Power panels



Service Providers for Solar Water Heaters



Service Providers for Solar Inverters



Air Source Heat Pump

A Revolution in Water heating technology

Air Source Heat Pump Water Heating System works with a proven high performance & power saving technology and regarded as 4th generation water heater. It is unique because, approximately 75% of total heat energy generated is absorbed from surrounding air & 25% from electricity.

Salient Features:

24 / 7 hot water solution

Automatic defrosting function

Easy and flexible installation and maintenance.

Durability : long lifespan & low maintenance

Successfully launched in Indian market.

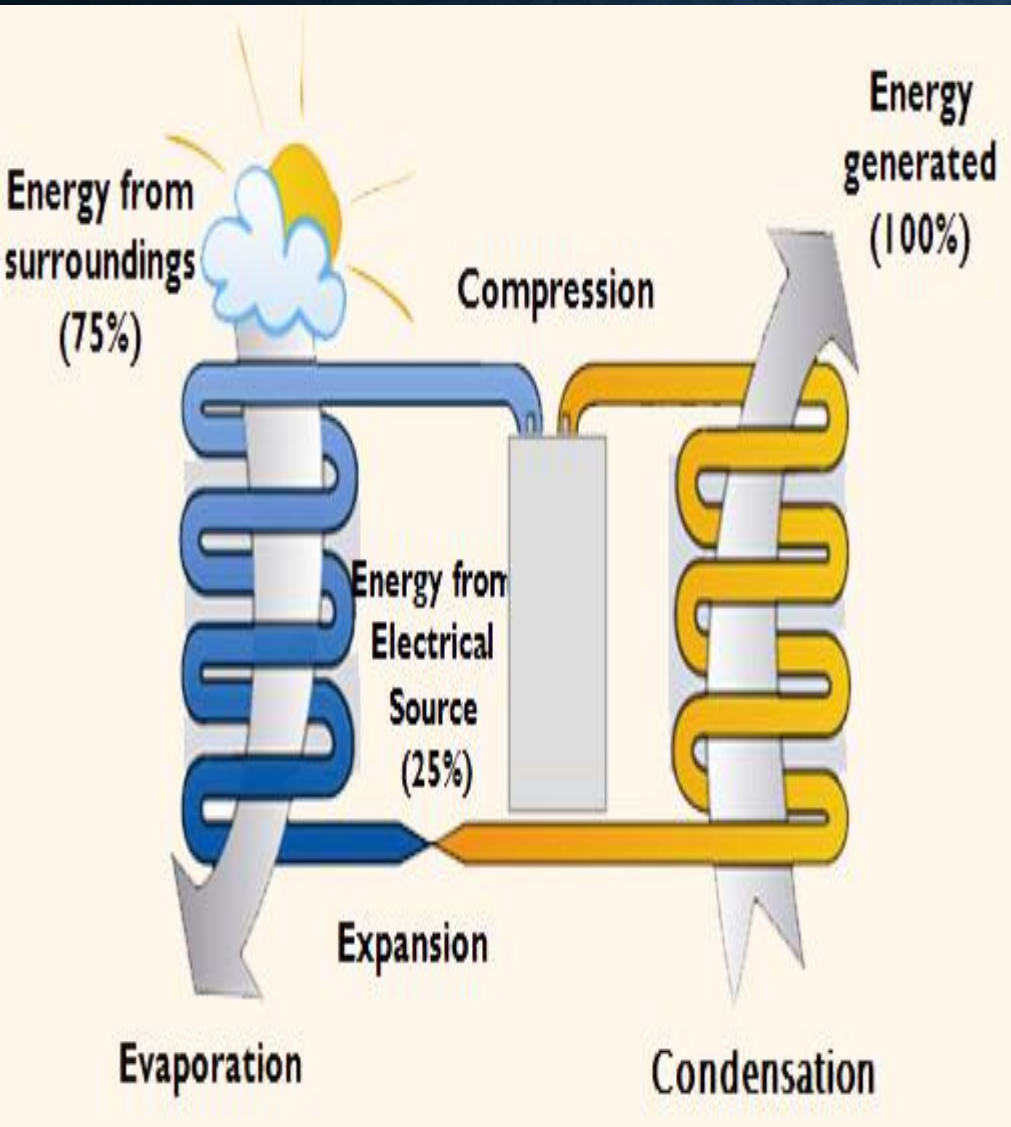
Equipped with intelligent controller with LCD display

Models from 90 Litres /Hr to 5000 Litres /Hr hot water generation.

Tremendous savings about 60% compared to running electric/diesel fired Boilers.



Application : Industries / Resorts / Hostels / Hospitals / Swimming Pools / Residential ..etc.,
Equipped with high quality, efficient compressor & evaporator
All weather operation. No matter in rainy, snowy or cloudy days
It can be hybrid with the existing mode of heating system and thus eliminates the burden of extra works and cost.



HOW DOES HEAT PUMP WORKS

- Heat from Ambient Air is absorbed by evaporator coils containing refrigerant at low pressure and low temperature.
- Due to heat absorption the refrigerant boils & vaporizes.
- After passing through compressor, the refrigerant attains high temperature & high pressure and enters into condenser with heat exchanger.
- While condensing the refrigerant transfers heat to the water in the Heat Exchanger and thus loses its temperature.
- The refrigerant further loses its pressure & temperature while passing through expansion valve and enters evaporator chamber. Thus the cycle repeats.
- The COP (Coefficient of Performance) is between 3.5 to 4 which means that, it will produce 3.5 to 4 units of heat energy by consuming 1 units of electricity.

Advantages

- Requires less area for installation.
- 24 Hours hot water availability.
- High pressure / low pressure protection.
- Equipped with fully automatic and intelligent Micro processor controller and needs no human attendance once commissioned.
- Durability : long lifespan with low maintenance.
- Operates in all weather conditions.
- Antifreeze protection.



Solar Hybrid Hot Water Heating System



Description	Single Phase
1.Capacity	1 KVA to 50 KVA
2.Input Voltage	190-270V / 170-270V
3.Output Voltage	220/230/240V(Settable)
4.Nature Of Cooling	Air-cooled/Oil cooled
5.Output Voltage Regulation	±1%
6.Efficeincy	≥98%
7.Input Frequency	50Hz,±3Hz
8.Effect of Load Power Factor	Nil on output voltage
9.Speed Of Correction	30v/Sec
10.Servo Motor Drive/Type	Ac Synchronous stepper motor & opto coupler based traic drive
11.Display Type	LCD
12.Displayed Parameter	Input/output Voltages,HZ,amps
13.Protections	Under Voltage/Over Voltage cutoff,Overload and short circuit protection
14.Type & Control Design	Micro Controlled (DSP) based with O/P Sensing feedback system
15.Operating Temperature	0-50 degree Celsius
16.Manual By Pass Facility	Through change over switch above 5kva
17.Front Panel	Enter, Up/Down key
18.Distortion of waveform	Nil(Same as Input)
19.Effect of Load PF	Nil(on output voltage)
20.Nature of winding	Copper Variances
21.Enclosure	CRCA mild steel
22.Standard of Stabilizer	As per I.S. 9815
23.Oil standard	As per I.S 335



Automatic/Manual Water Softener

This is in reference to the discussion we had regarding fitting water treatment plant to remove hardness present in water. We are pleased to submit there with the scheme for setting up a Softener based on the requirement.

HARD WATER PROBLEMS

It can cause “scale” to form on the inside of pipes, Water heaters, washing Machine sand soon. The calcium and magnesium precipitate out of the water and stick to things. The scale doesn’t conduct heat well and it also reduces the flow through pipes. Eventually, pipes can become completely clogged. It reacts with soap to form a sticky scum, and also reduces the soap’s ability to lather since most of us like to wash with soap, hard water makes bath or shower less productive.

With are sin quantity of 150liters and the output between regeneration is 15000ltr. The Pentair Softener is a Manual/Auto operated, and this ion exchange unit designed especially for domestic use. It is simple to operate, inexpensive to maintain and is widely used in the domestic sector. The softener comprises MS-Pressure vessel containing a bed of Ion exchange resin, are generating system and control valves. A strongly acidic Ion exchange resin in sodium for misused to exchange sodium ions for the hardness forming calcium and magnesium ions. The valves are Automatically operated.



ALL Brands UPS AVAILABLE

Luminous Cruze 3.5KVA Inverter with RC 18000 Battery (4 Batteries)

Battery feature: low antimony alloy used - very low maintenance robust tubular plates provide many years of service excellent overcharge tolerance (accepts very deep discharge-suitable for long power cuts) tubular plate battery ideal for longer power cut areas warranty- 18+18 months capacity - 150 ah

Inverter feature: high over load handling capacity installation and maintenance friendly advanced battery management which enhances battery life up to 70% intelligent battery charging mechanism



Power Saving Grundfos Submersible/Booster Pump



Solar Powered DC Supply 9000V Fencing





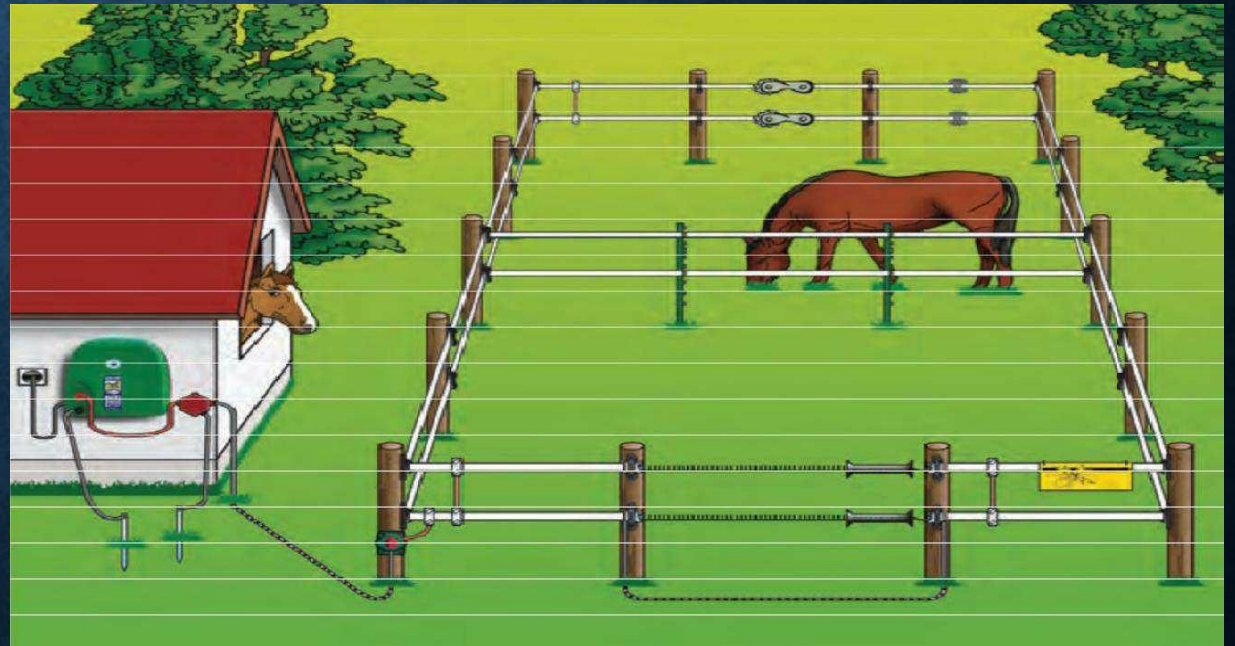
SOLAR FENCING SYSTEM

Solar fence system enables the control of animals by giving them a short, sharp but safe Shock, which is sufficiently memorable that they never forget it. Solar fence has the capacity to Power long distances of multi wire fences. This has promoted the use of electric fencing on to large properties and enabled the control of all animals, including wild ones.

Solar fencing need not have physical strength because it seldom comes under pressure but it must be well designed and constructed to absorb the impact of animals.

WHY GO FOR SOLAR POWER FENCING?

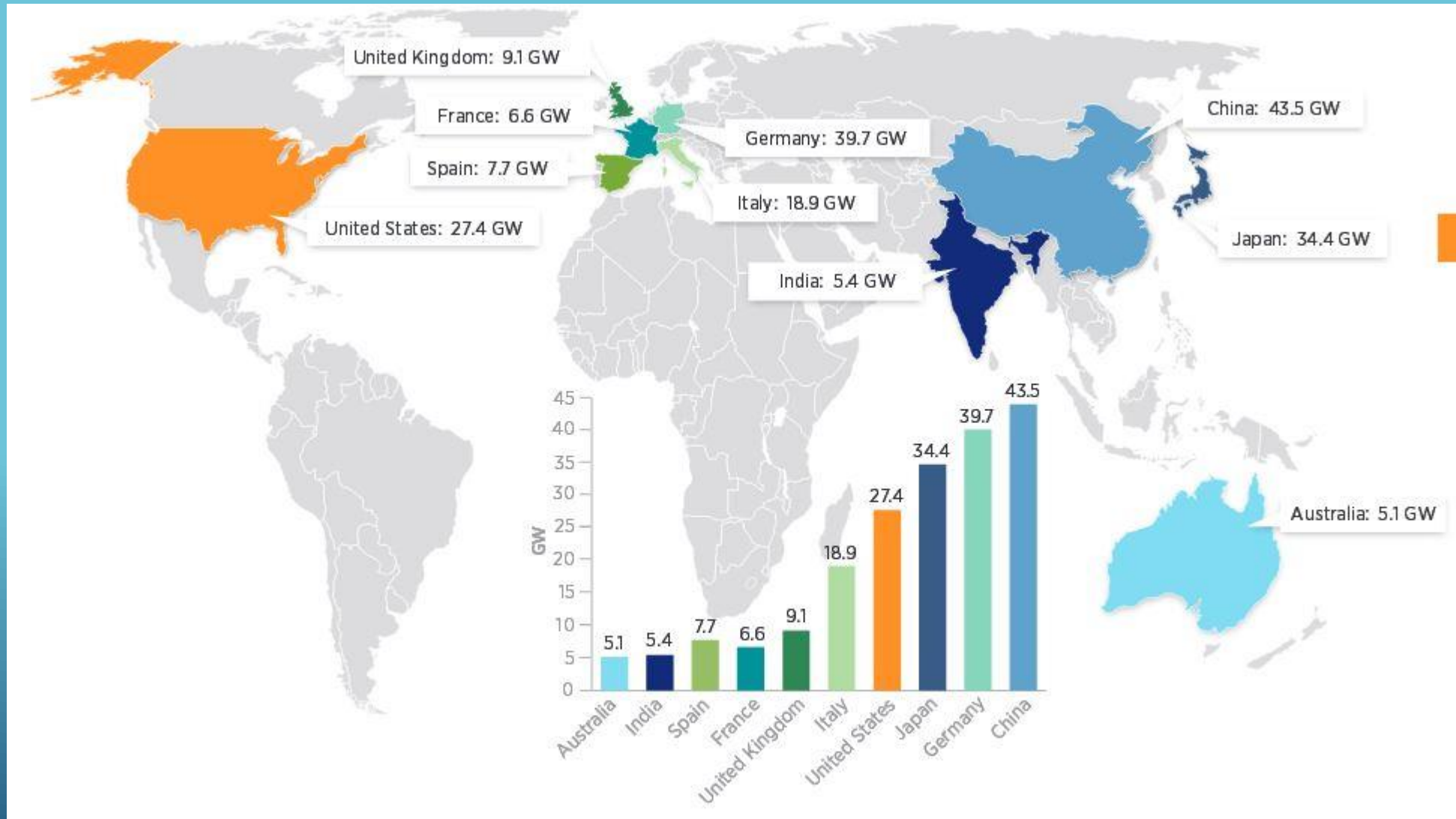
1. Keep animals, including wild and vermin, away.
1. Growing, rationing of crops and pastures can be
1. Improved during slow growth periods.
1. Separate various types and classes of animals.
1. Fence off trees, rivers, eroding areas and roads.



Solar Water Pumping System



Top Countries for Installed PV Capacity





For your interest in green energy

Twilight RENEWABLE ENERGY

**#203, 1ST Main, 2nd Cross,
Mallathahalli, Gnana Bharathi (PO),**

Bangalore-056

Contact : +91-8548975492

+91-9663295820