



**GS INTERNATIONAL**

**Manufacturers that deals with  
the Fabrication and Installation of  
complete Cattle & Poultry  
Fish Feed Plants and its  
avarious components.**





**GS INTERNATIONAL**

**Welcome to the GS International Company. GS International Company is the one the leading manufacturers that deals with the fabrication and installation of complete cattle& Poultry, Fish feed plants and its various components. In year 1990, Gurcharan Singh has started this firm. From that time, we are running this business and serving our customers in India and foreign countries. Our firm policy is to earn our customers faith and confidence by providing them best quality machines and services. We are working with modern techniques starting from drawing to installation of full plant with the help of our mechanical engineers, we first generate 2D layout of the plant according to the space available to get an fare idea for the installation of complete plant and then make changes according to the situation. Today, G S International Company has in the position to become a major player in the field of animal feed supplements and machines.**



**GS INTERNATIONAL**



**Our Products**





G S INTERNATIONAL

# Our Products







GS INTERNATIONAL



## **PRESS MUD PELLET MACHINE**



## **ROTARY DRUM DRYING MACHINE**



## **FLASH DRYER**





GS INTERNATIONAL

## **CATTLE AND POULTRY FEED PLANT**

A cattle feed plant produces huge volume of cattle feed using a variety of raw materials in the form of powder. The material mixed uniformly followed by a process of adding essential minerals and vitamins. The feed is packed in bags and sacks.



### **BLENDER MIXER**

<b>Power Source</b>	<b>: Electricity</b>
<b>Product Type</b>	<b>: Blender Mixer</b>
<b>Usage/Applications</b>	<b>: Industrial</b>
<b>Supply Ability</b>	<b>: 10 Per Year</b>
<b>Delivery Time</b>	<b>: 1-2 Months</b>

## **POULTRY CRUMBLER MACHINES**

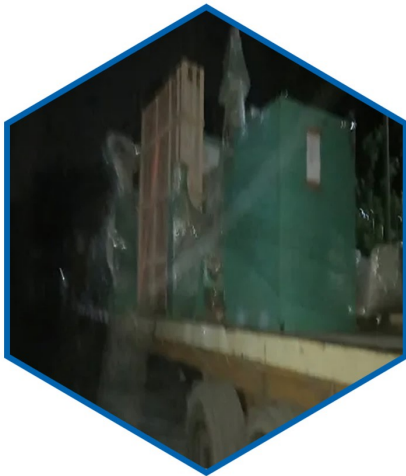
<b>Power Source</b>	<b>: Electricity</b>
<b>Product Type</b>	<b>: Poultry crumbler machine</b>
<b>Usage/Applications</b>	<b>: Industrial</b>
<b>Supply Ability</b>	<b>: 10 Per Year</b>
<b>Delivery Time</b>	<b>: 1-2 Months</b>







GS INTERNATIONAL



## **EXPORT POULTRY FEED MACHINE LOADING CONTAINER**

<b>Power Source</b>	<b>: Electricity</b>
<b>Product Type</b>	<b>: Poultry Feed Plant</b>
<b>Usage/Applications</b>	<b>: Industrial</b>
<b>Supply Ability</b>	<b>: 10 Per Year</b>
<b>Delivery Time</b>	<b>: 1-2 Months</b>



## **HAMMER MACHINE POULTRY FEED**

<b>Supply Ability</b>	<b>: 15 Per Year</b>
<b>Delivery Time</b>	<b>: 30-45 Days</b>





GS INTERNATIONAL



## **POULTRY MASH FEED MACHINE PLANT**

<b>Product Type</b>	<b>: Poultry Feed Plant</b>
<b>Usage/Applications</b>	<b>: Poultry Feed Making</b>
<b>Supply Ability</b>	<b>: 10 Per Year</b>
<b>Delivery Time</b>	<b>: 30-45 Days</b>

## **POULTRY CRUMBLER MACHINE**

<b>Power Source</b>	<b>: Electricity</b>
<b>Product Type</b>	<b>: Poultry crumbler machine</b>
<b>Usage/Applications</b>	<b>: Industrial</b>
<b>Supply Ability</b>	<b>: 10 Per Year</b>
<b>Delivery Time</b>	<b>: 1-2 Months</b>







**GS INTERNATIONAL**

## **POULTRY FEED MACHINE**

<b>Power Source</b>	<b>: Electricity</b>
<b>Product Type</b>	<b>: Poultry Feed Machine</b>
<b>Usage/Applications</b>	<b>: Industrial</b>
<b>Supply Ability</b>	<b>: 10 Per Year</b>
<b>Delivery Time</b>	<b>: 1-2 Months</b>



## **POULTRY FEED MASH PLANT**

<b>Supply Ability</b>	<b>: 15 Per Year</b>
<b>Delivery Time</b>	<b>: 30-45 Days</b>





GS INTERNATIONAL

## POULTRY AND CATTLE MASH PLANT

<b>Power Source</b>	<b>: Electricity</b>
<b>Product Type</b>	<b>: Poultry And Cattle Mash Plant</b>
<b>Usage/Applications</b>	<b>: Industrial</b>
<b>Supply Ability</b>	<b>: 10 Per Year</b>
<b>Delivery Time</b>	<b>: 1-2 Months</b>



## CATTLE FEED GRINDER MACHINE WITH MOTOR

<b>Product Type</b>	<b>: Cattle feed grinder machine with motore</b>
<b>Power Source</b>	<b>: Electricity</b>
<b>Usage</b>	<b>: Industrial</b>
<b>Supply Ability</b>	<b>: 10 Per Year</b>
<b>Delivery Time</b>	<b>: 1-2 Months</b>







**GS INTERNATIONAL**

## **POULTRY FEED PLANT**

<b>Power Source</b>	<b>: Electricity</b>
<b>Product Type</b>	<b>: Poultry feed plant</b>
<b>Usage/Applications</b>	<b>: Industrial</b>
<b>Supply Ability</b>	<b>: 10 Per Year</b>
<b>Delivery Time</b>	<b>: 1-2 Months</b>
<b>Production Capacity</b>	<b>: 5 T/hr</b>



## **POULTRY FEED PLANT EXPORT MACHINE**

<b>Supply Ability</b>	<b>: 10 Per Year</b>
<b>Delivery Time</b>	<b>: 1-2 Months</b>
<b>Usage</b>	<b>: Industrial</b>
<b>Product Type</b>	<b>: Poultry feed plant export machine</b>

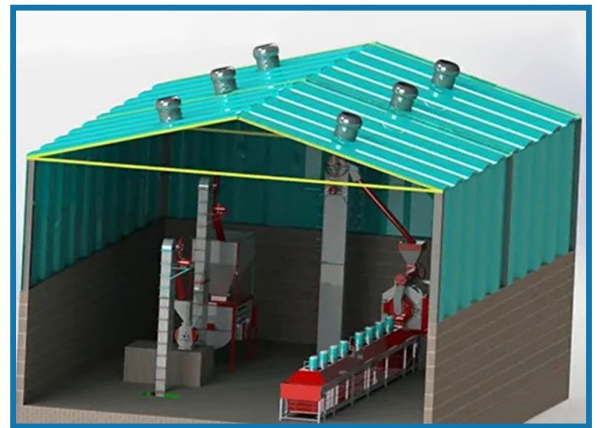




**GS INTERNATIONAL**

## **CATTLE FEED PLANT MACHINE**

**Automatic Grade : Semi Automatic**  
**Drive Type : Electric**  
**Delivery Time : 1 Week**  
**Supply Ability : 50 Per Week**  
**Type : Cattle Feed Plant**  
**Material : Mild Steel**



## **CATTLE AND POULTRY FEED PLANT COMBO**

**Supply Ability : 10 Per Year**  
**Product Type : Cattle and poultry  
feed plant combo**  
**Delivery Time : 1-2 Months**  
**Usage : Industrial**  
**Power Source : Electricity**







**GS INTERNATIONAL**



## **AUTOMATIC POULTRY FEED PLANT**

<b>Automatic Grade</b>	<b>: Automatic</b>	<b>Type</b>	<b>: Automatic Poultry</b>
<b>Computerized</b>	<b>: No</b>		<b>Feed plant</b>
<b>Drive Type</b>	<b>: Electric</b>	<b>Control System</b>	<b>: Human Machine</b>
<b>Delivery Time</b>	<b>: 1 Week</b>		<b>Interface</b>
<b>Supply Ability</b>	<b>: 1 Per Week</b>		

## **VERTICAL CATTLE FEED PLANT**

<b>Supply Ability</b>	<b>: 10 Per Year</b>
<b>Type</b>	<b>: Vertical Cattle Feed Plant</b>
<b>Delivery Time</b>	<b>: 1-2 Months</b>
<b>Automatic Grade</b>	<b>: Semi-Automatic</b>
<b>Material</b>	<b>: Mild Steel</b>
<b>Drive Type</b>	<b>: Electric</b>





**GS INTERNATIONAL**



## **BLENDER MIXER**

<b>Supply Ability</b>	<b>: 10 Per Year</b>
<b>Delivery Time</b>	<b>: 1-2 Months</b>
<b>Usage/Applications</b>	<b>: Industrial</b>
<b>Product Type</b>	<b>: Other, Blender Mixer</b>
<b>Power Source</b>	<b>: Electricity</b>



## **MEDICINE MIXTURE POULTRY FEED**

<b>Supply Ability</b>	<b>: 10 Per Year</b>
<b>Delivery Time</b>	<b>: 1-2 Months</b>
<b>Usage/Applications</b>	<b>: Industrial</b>
<b>Product Type</b>	<b>: Medicine mixture poultry feed</b>
<b>Power Source</b>	<b>: Electricity</b>





**GS INTERNATIONAL**



## **MASH FEED PLANT**

**Supply Ability : 10 Per Year**  
**Delivery Time : 30 - 45 Days**



## **EXPORT POULTRY FEED MACHINE**

**Supply Ability : 10 Per Year**  
**Delivery Time : 1-2 Months**  
**Product Type : Export poultry feed machine**  
**Usage/Applications : Industrial**



**GS INTERNATIONAL**

## **MIXER AND HOPPER**

<b>Supply Ability</b>	<b>: 10 Per Year</b>
<b>Delivery Time</b>	<b>: 1-2 Months</b>
<b>Usage/Applications</b>	<b>: Industrial</b>
<b>Product Type</b>	<b>: Mixer and hopper</b>
<b>Power Source</b>	<b>: Electricity</b>



## **POULTRY FEED PLANT COMPLETE MACHINERY**

<b>Supply Ability</b>	<b>: 10 Per Year</b>
<b>Delivery Time</b>	<b>: 1-2 Months</b>
<b>Product Type</b>	<b>: Poultry feed plant complete machinery</b>
<b>Usage/Applications</b>	<b>: Industrial</b>
<b>Power Source</b>	<b>: Electricity</b>







**GS INTERNATIONAL**

## **CATTLE AND POULTRY FEED MASH PLANT**

**Color** : White & Yellow  
**Automatic Grade** : Automatic  
**Drive Type** : Electric  
**Delivery Time** : 1 Month  
**Supply Ability** : 1 Per Month  
**Type** : Mash Feed Plant  
**Warranty** : 1 Year  
**Control System** : PLC Control  
**Computerized** : No  
**Voltage** : 220-240 Volt (v)



## **CATTLE FEED PLANT 2 TPH**

**Color** : White & Green  
**Automatic Grade** : Automatic  
**Drive Type** : Electric  
**Delivery Time** : 1 Month  
**Supply Ability** : 1 Per Month  
**Type** : Cattle Feed Plant  
**Voltage** : 220-240 Volt (v)  
**Control System** : PLC Control  
**Material** : Mild Steel  
**Warranty** : 1 Year





**GS INTERNATIONAL**

## **CATTLE POULTRY COMBO PLANT**

**Color** : Yellow  
**Automatic Grade** : Automatic  
**Drive Type** : Electric  
**Delivery Time** : 1 Month  
**Supply Ability** : 1 Per Month  
**Type** : Cattle Poultry Combo  
**Material** : Mild Steel  
**Control System** : PLC Control  
**Computerized** : No  
**Voltage** : 220-240 Volt (v)



## **POULTRY FEED PLANT 5 TPH**

**Color** : Yellow & Green  
**Automatic Grade** : Automatic  
**Drive Type** : Electric  
**Delivery Time** : 1 Month  
**Supply Ability** : 1 Per Month  
**Warranty** : 1 Year  
**Material** : Mild Steel  
**Control System** : PLC Control  
**Computerized** : No  
**Voltage** : 220-240 Volt (v)







GS INTERNATIONAL

## **CHAIN CONVEYOR**

**We are actively engaged in rendering a wide array of Chain Conveyor. It is used for moving products down an assembly line. In addition to this, provided conveyor is manufactured under the supervision of adroit experts to give a smooth and reliable performance. It is featured for its excellent function, easy handling and affordable market rates. Chain Conveyor is used to transport heavy unit loads like industrial containers etc. It allows products to move down and up safely.**





GS INTERNATIONAL

## Pallet Mill Machine

### CATTLE FEED PLANT EXPORT MACHINERY



Delivery Time	: 1-2 Months
Supply Ability	: 10 Per Year
Type	: Cattle Feed Plant
Automatic Grade	: Semi-Automatic
Drive Type	: Electric
Material	: Mild Steel

Operating Type	: Automatic
Power Source	: Electricity
Color	: Green
Product Type	: Pallet machine
Surface Treatment	: Painted
Warranty	: 1 Year
Technology	: CNC
Usage/Applications	: Industrial
Supply Ability	: 1 Per Month
Delivery Time	: 1 Months

## PALLET MACHINE



Supply Ability	: 10 Per Year
Delivery Time	: 1-2 Months
Power Source	: Electricity
Product Type	: Pallet Machine
Usage/Applications	: Industrial

## PALLET MILL MACHINE





GS INTERNATIONAL

## POULTRY FEED MACHINE

Large poultry farms and production companies demand poultry feed machine that is used to produce feed for poultry, necessary for growth and maintenance of good health and wellbeing.

### CRUMBLER MACHINES



Control System	: Human Machine Interface
Drive Type	: Electric
Material	: Metal
Type	: Crumbler Machine
Automatic Grade	: Automatic
Delivery Time	: 1-8 Days
Supply Ability	: 1 Per Day

## MASH PLANT CATTLE FEED MACHINE

Supply Ability	: 1 Per Day
Delivery Time	: 1- 8 Days



## AUTOMATIC POULTRY FEED MAKING MACHINE



Material	: Steel
Feature	: Highly efficient
Technology	: Automatic
Supply Ability	: 100 Per Day
Delivery Time	: 1-8 Days



**GS INTERNATIONAL**

## **PULVERIZER MACHINE**

We are acclaimed in rendering a wide array of Pulverizer Machine to our clients. This machine is a mechanical device for the grinding of many different types of small materials. In addition to this, provided machine is used to pulverize coal for combustion. It is inserted with a powerful motor to control its high speed movement. Pulverizer Machine is used for grinding of dry, herbs, coffee, wet spices. It doesn't need any extra maintenance while performing on regular basis.

## **PULVERIZER MACHINE**

### **Price And Quantity**

**Minimum Order Quantity : Any Order Unit**

### **Trade Information**

**Payment Terms : Cash Advance (CA)**

**Main Domestic Market : All India**







GS INTERNATIONAL

## **DOUBAL DOOR HAMMER MILL**

Doubal Door Hammer Mill is acclaimed in the market for its weather resistant, fire retardant and cost effective. This mill is easy to operate with low operational cost. It is efficient grinding applications. Apart from this, provided mill is requiring changes of screens hammers as well as liners. Doubal Door Hammer Mill is made with a high quality of tools to improve the durability and performance. It is delivered in a quick span of time.

## **DOUBAL DOOR HAMMER MILL**

### **Product Details:**

**Product Type** : Doubal Door Hammer Mill  
**Material** : Cast Iron

### **Product Details:**

**Minimum Order Quantity** : 1 Plant

### **Product Specifications:**

**Material** : Cast Iron  
**Product Type** : Doubal Door Hammer Mill

### **Trade Information:**

**Payment Terms** : Cash Advance (CA)  
**Supply Ability** : 10 Plant Per Year  
**Delivery Time** : 1-2 Months  
**Main Domestic Market** : All India





GS INTERNATIONAL

## **GRINDER MACHINERY**

A number of industries demand a grinder machine with rotary feeder to grind material in different forms. The kinds of material that can be processed in these machines are wood, textile, rubber and more.



### **GRINDER MACHINE**

<b>Material</b>	<b>: Cast Iron</b>
<b>Product Type</b>	<b>: Grinder Machine</b>
<b>Supply Ability</b>	<b>: 10 Per Year</b>
<b>Delivery Time</b>	<b>: 1-2 Months</b>



### **GRINDER MACHINE WITH ROTARY FEEDER**





GS INTERNATIONAL

## **BAG PACKING MACHINE**

### **Product Details:**

<b>Type</b>	<b>: Bag packing machine</b>
<b>Material</b>	<b>: Stainless Steel</b>
<b>Feature</b>	<b>: Heavy Duty Machine Durable Highly Efficient</b>
<b>Computerized</b>	<b>: No</b>
<b>Automatic Grade</b>	<b>: Automatic</b>
<b>Control System</b>	<b>: PLC Control</b>
<b>Drive Type</b>	<b>: Electric</b>

### **Price And Quantity**

**Minimum Order Quantity : 1 Piece**

### **Product Specifications**

<b>Type</b>	<b>: Bag packing machine</b>
<b>Warranty</b>	<b>: 1 Year</b>
<b>Computerized</b>	<b>: No</b>
<b>Automatic Grade</b>	<b>: Automatic</b>
<b>Voltage</b>	<b>: 220-440 Volt (v)</b>
<b>Material</b>	<b>: Stainless Steel</b>
<b>Color</b>	<b>: Blue</b>
<b>Feature</b>	<b>: Heavy Duty Machine Durable Highly Efficient</b>
<b>Control System</b>	<b>: PLC Control</b>
<b>Drive Type</b>	<b>: Electric</b>



### **Trade Information**

<b>Supply Ability</b>	<b>: 1 Piece Per</b>
<b>MonthDelivery Time</b>	<b>: 1 Months</b>



GS INTERNATIONAL

## **VERTICAL STEAM BOILER MACHINE**

We are a trusted supplier in dealing an optimum range of Vertical Steam Boiler Machine. It is manufactured under the supervision of adroit experts and cutting edge tools. This machine is a type of fire-tube where the boiler barrel is oriented in a vertical manner. Vertical Steam Boiler Machine is applicable in industrial heating and commercials sectors. It is also useful for hot water supply. It is resistant to corrosion and heat.

## **VERTICAL STEAM BOILER MACHINE**

### **Product Details :**

**Condition** : New  
**Product Type** : Vertical Steam Boiler Machine  
**Material** : Mild Steel

### **Price And Quantity :**

**Minimum Order Quantity** : 1 Plant

### **Product Specifications :**

**Condition** : New  
**Material** : Mild Steel  
**Product Type** : Vertical Steam Boiler Machine

### **Trade Information :**

**Supply Ability** : 10 Plant Per Year  
**Delivery Time** : 1-2 Months





**+91-9464970075**  
**+91-9888531657**



**D-94, Focal Point, Khanna**  
**141401, Punjab, India**



**Gsinternational25@gmail.com**



**GS INTERNATIONAL**

