

HOW TO ORDER



Our aim is to make ordering as quick, easy and convenient as possible. Our products are available via a comprehensive network of stockists throughout the UK, Ireland and the rest of the world.

Our Distributors hold stock of fast-moving items. If they do not have the specific item that you require, they can order it from us and we will deliver it promptly.

Finding your local Stockist is quick and easy, either visit www.sealey.co.uk or call us on the number shown below.



+91 9380647428

+91 8073843541



info@vandita-technovations.in



www.vandita-technovations.in

Our call centre is open between 8.30am to 5.30pm Monday to Friday. Calls are immediately passed to the first available operator without any complicated routing process. Our experienced, professional and friendly advisors can provide instant stock availability, pricing and technical information.

Our authorised stockists can order direct from us via telephone, email, fax or online using our B2B (Business to Business) website. Here, you can place your order at a time that suits you and view instant stock availability and pricing.

HUGE STOCKS & FAST DESPATCH

We hold over £30million worth of stock. Modern, computer controlled warehousing enables, on average, 99.8% of our entire product range to be despatched straightaway.

Some items in our Catalogue are very heavy and extra assistance is recommended at the delivery point to help unload. Look out for this logo on products affected.



1	HAND TOOLS	14-264
2	JACKING & LIFTING	265-324
3	MOTORCYCLE TOOLS	325-353
4	BATTERY CHARGERS	354-377
5	VEHICLE SERVICE TOOLS	378-629
6	LUBRICATION	630-677
7	BODYSHOP	678-729
8	AIR POWER TOOLS	730-764
9	COMPRESSORS	765-796
10	WELDING & CUTTING	797-819
11	ELECTRIC POWER TOOLS	820-857
12	POWER TOOL ACCESSORIES	858-912
13	LIGHTING & POWER	913-953
14	STORAGE & WORKSTATIONS	954-1073
15	HEATING & COOLING	1074-1095
16	JANITORIAL, MATERIAL HANDLING & LEISURE	1096-1176
17	MACHINE SHOP	1177-1236
18	SAFETY PRODUCTS	1237-1264
19	CONSUMABLES	1265-1331
INDEX - MODEL NO.		1332-1362
INDEX - DESCRIPTIVE		1363-1370

LUBRICATION

SECTION 6

back to
SECTION LIST



AdBlue Pumps & Accessories
646 - 647

Barrel Bunds
668 - 669

Diesel Transfer Pumps
658 - 659

Drain Pans & Drip Trays
643 - 645

Drum Handling Equipment
670 - 674

Fuel Containers
666 - 667

Fuel Transfer Pumps
665

Funnels & Measuring Jugs
660 - 664

Grease Equipment & Accessories
631 - 637

Oil & Fluid Drainers
638 - 642

Oil & Fluid Transfer Pumps
646 - 659

Oil Dispensing Systems
654 - 655

Oil Suction Syringes
652

Parts Cleaning Tanks
675 - 677

Portable Dispensing Tanks
656 - 657

Spill Control
653



A One-Way Fill Mini Pistol Type Grease Gun
Model No. AK444

Mini one-way manual fill. Die-cast pump head with twist type air-bleed. Can be used as pistol or straight type grease gun. Supplied with a 4" straight steel delivery tube and push-on hydraulic 4-jaw coupling.

Capacity:	120cm ³
Delivery Pressure:	3500psi
Delivery per Stroke:	0.4cm ³
Optional 300mm Flexible Delivery Hose:	GGHE300



B Bulk Fill Mini Lever Type Grease Gun
Model No. AK451

Mini lever type bulk fill grease gun. Manufactured with a die-cast aluminium pump head, twist type air-bleed and black powder coated finish. Supplied with 150mm steel delivery tube and push-on hydraulic 4-jaw coupling.

Capacity:	120cm ³
Delivery Pressure:	6000psi
Delivery per Stroke:	0.55cm ³
Optional 300mm Flexible Delivery Hose:	GGHE300



C Mini Grease Gun
Model No. AK442

Mini push action hand greaser. Ideal for limited access areas or where smaller amounts of grease are required. Supplied with rigid extension tube and delivery nozzle.

Capacity:	125cm ³
Delivery Pressure:	1000psi
Delivery per Stroke:	0.9cm ³
Length:	270mm



D 100g Mini Grease Applicator
Model No. AK51

Mini grease applicator supplied with 100g lithium grease cartridge. Ideal for use in hard-to-reach areas such as engine bays and door hinges. Supplied with accurate dispensing nozzle for precision greasing.

G Replacement Grease Cartridge:	AK51C
--	-------



E Quick Release 3-Way Fill Pistol Type Grease Gun
Model No. AK481

Pistol style grease gun with contoured handle. Highly durable die-cast aluminium alloy pump head with air-bleed valve. Fitted with an innovative quick release mechanism to speed up the refill process. Features 3-way fill with cartridge, bulk and manual capability. Supplied with a rigid delivery tube and push-on hydraulic 4-jaw coupling. Accepts standard 400g cartridges.

Capacity:	400cm ³
Delivery Pressure:	4000psi
Delivery per Stroke:	0.71cm ³
Optional 300mm Flexible Delivery Hose:	GGHE300



F 3-Way Fill Pistol Type Grease Gun
Model No. AK446

Die-cast pump head with air-bleed valve. 3-Way fill with cartridge, bulk or manual capability. Supplied with rigid delivery tube and push-on hydraulic 4-jaw coupling. Accepts standard 400g cartridges.

Capacity:	500cm ³
Delivery Pressure:	4500psi
Delivery per Stroke:	1.25cm ³
Optional 300mm Flexible Delivery Hose:	GGHE300



G Push Type Mini Grease Gun
Model No. AK55

Used to lubricate hammer mechanisms in impact wrenches. Die-cast aluminium head with two threaded pockets to hold spare needle nozzles. Includes three nozzle sizes, 0.7mm, 1mm and 1.4mm to ensure precise placement of lube. 3oz Cartridge capacity. Easy one-handed operation.



H 400g EP2 Lithium Grease Cartridge
Model No. SEE BELOW

Multipurpose EP2 grease cartridge suitable for use with all plunger type grease guns. Lithium grease, ideal for a wide range of applications.

Model No:	Pack Qty:
SGC1	1
SGC12	12



I 400g EP2 Lithium Complex Grease Cartridge
Model No. SCS106

High quality EP2 lithium complex grease cartridge. Suitable for applications involving extreme pressure or changes in temperature.

Size:	400g
--------------	------



A 3-Way Fill
Side Lever Grease Gun
Model No. AK445

3-Way fill with cartridge, bulk or manual capability. Supplied with rigid delivery tube and push-on hydraulic 4-jaw coupling. Contoured pump handle. Accepts standard 400g cartridges.

Capacity:	500cm ³
Delivery Pressure:	7000psi
Delivery per Stroke:	1.2cm ³
Optional 300mm Flexible Delivery Hose:	GGHE300



B 3-Way Fill
Side Lever Grease Gun
Model No. AK44

Die-cast pump head with air-bleed valve. 3-Way fill with cartridge, bulk or manual capability. Supplied with rigid delivery tube and push-on hydraulic 4-jaw coupling. Contoured pump handle. Accepts standard 400g cartridges.

Capacity:	500cm ³
Delivery Pressure:	10000psi
Delivery per Stroke:	1.2cm ³
Optional 300mm Flexible Delivery Hose:	GGHE300



C 3-Way Fill
Side Lever Grease Gun
Model No. AK443

Die-cast pump head. 3-Way fill with cartridge, bulk or manual capability. Supplied with rigid delivery tube and push-on hydraulic 4-jaw coupling. Contoured pump handle. Accepts standard 400g cartridges.

Capacity:	500cm ³
Delivery Pressure:	8000psi
Delivery per Stroke:	1.2cm ³
Optional 300mm Flexible Delivery Hose:	GGHE300



D 2-Way Fill Heavy-Duty
Adjustable Flow Grease Gun
Model No. AK49

Highly durable die-cast aluminium alloy pump head. Features dual piston design ideal for a variety of applications. 2-Way fill with cartridge or manual capability. Fitted with adjustable pressure switch on lever allowing user to select between low-pressure/high-volume or high pressure/low-volume, depending on the particular application. Supplied with rigid delivery tube and push-on hydraulic 4-jaw coupling. Rubber gripped grease tube and handle for easy grip. Accepts standard 400g cartridges.

Capacity:	400cm ³
Delivery Pressure:	10000psi
Delivery per Stroke:	2.14cm ³
Optional 300mm Flexible Delivery Hose:	GGHE300



E 3-Way Fill
Heavy-Duty
Twin Piston Grease Gun
Model No. AK4402

Highly durable cast iron pump head, features dual piston design for high volume performance. 3-Way fill with cartridge, bulk or manual capability. Supplied with rigid delivery tube and push-on hydraulic 4-jaw coupling. Rubber gripped grease tube and handle for easy grip. Features variable stroke for controlled grease volume. Half stroke gives low pressure and low volume, full stroke provides high pressure and high volume delivery. Accepts standard 400g cartridges.

Capacity:	500cm ³
Delivery Pressure:	4000psi
Delivery per Stroke:	2.14cm ³
Optional 300mm Flexible Delivery Hose:	GGHE300



F 3-Way Fill
2-Way Operating
Heavy-Duty Grease Gun
Model No. AK48

Highly durable die-cast aluminium alloy pump head. Features 3-way fill with cartridge, bulk or manual capability. Fitted with 2-way operating extendable handle; pistol type, ideal for use in confined spaces and lever type, providing high pressure and volume. Supplied with rigid delivery tube, push-on hydraulic 4-jaw coupling and 300mm flexible delivery tube. Rubber gripped grease tube and handle for easy grip. Features variable stroke for controlled grease volume; half stroke gives low-pressure/low-volume, full stroke provides high pressure/high-volume delivery. Accepts standard 400g cartridges.

Capacity:	400cm ³
Delivery Pressure:	6000psi
Delivery per Stroke:	0.71cm ³



G Quick Release 3-Way Fill
Side Lever Grease Gun
Model No. AK4404

Highly durable die-cast aluminium alloy pump head with air-bleed valve. Fitted with an innovative quick release mechanism to speed up the re-fill process. Features 3-way fill with cartridge, bulk and manual capability. Supplied with a rigid delivery tube, push-on hydraulic 4-jaw coupling and contoured rubber pump handle. Accepts standard 400g cartridges.

Capacity:	400cm ³
Delivery Pressure:	7000psi
Delivery per Stroke:	0.71cm ³
Optional 300mm Flexible Delivery Hose:	GGHE300





A Double Lever Grease Gun
Model No. AK4403

Robust, double arm grease gun with aluminium die-cast head. For use with screw-type grease cartridges, using vacuum suction to ensure full utilization of grease cartridge, as well as eliminating priming issues associated with conventional grease guns. Features a protective cap for hose storage preventing contamination. 1/8"BSPT Thread and supplied with adaptor to fit most screw-type cartridges on the market. Use with Model No's SCS107 & SCS108. Zinc plated lever handles and rubber ergonomic grips. Fitted with minimal wearing parts to ensure prolonged life and supplied with 300mm(12") delivery hose and 4-jaw coupler.

Delivery Pressure:	7500psi
Delivery per Stroke:	0.8cm ³



B - C 400g Screw-Type EP2 Lithium Grease Cartridge
Model No. SEE BELOW

Screw-type multipurpose EP2 Lithium grease cartridges suitable for use with Model No's AK4403, AK52 & AK53 Grease Guns. Lithium grease ideal for a wide range of lubrication applications. Cartridge screws directly into grease gun head making it quicker and cleaner than standard cartridges.

Model No:	SCS107	SCS108
Qty:	1	12



D - E Screw-Type Grease Guns
Model No. SEE BELOW

Featuring screw-type connection to be used with Model No. SCS107 400g Screw-Type Grease Cartridge. Uses vacuum suction to ensure full utilization of grease cartridge as well as eliminating priming issues associated with conventional grease guns. Manufactured using high grade die-cast steel and supplied with flexible extension tube and coupler.

Model No:	AK53	AK52
Type:	Pistol Style	Lever Style
Delivery Pressure:	5000psi	10000psi
Delivery per Stroke:	0.7cm ³	0.9cm ³
Optional 300mm Flexible Delivery Tube:	GGHE300	GGHE300



F 12pc Grease Gun Adaptor Kit
Model No. AK4482

All-in-one set includes couplers, nozzles, adaptors and flexible hose. For use with all brands of manual grease guns. Ideal for automotive, agricultural, industrial and marine use. Supplied in storage case.

Contents: 300mm Flexible Hose with Spring, Needle Tip Adaptor, Grease Injection Needle, Grease Needle Nozzle, 90° Connector, 90° Slotted Connector, Rubber Tipped Nozzle, 1/8NPT Female/Female Connector, Standard Grease Coupler, Heavy-Duty Grease Coupler, 360° Coupler, 100mm Grease Gun Needle Nozzle Adaptor with Small & Large Quick Connectors



G 150m Blue Embossed 2-Ply Paper Roll - Pack of 6
Model No. BLU150

For full specification, see page 1324.



H Hand Wipes Bucket - Pack of 150
Model No. SCW3

For full specification, see page 1325.

**A Air Operated Pistol Type Grease Gun****Model No. SA40**

Die-cast head and body with chromed steel grease tube. Includes rigid delivery tube and 4-jaw coupler. Trigger operated single pulse gun with 3-way fill and air-bleed valve. Accepts 400g grease cartridges, bulk or manual fill.

Operating Pressure:	30-150psi
Delivery Pressure:	1200-6000psi
Inlet Size:	1/4" BSP
Optional 300mm Flexible Delivery Tube:	GGHE300

B Air Operated Continuous Flow Pistol Type Grease Gun**Model No. SA401**

Die-cast head and body with chromed steel grease tube. Includes rigid delivery tube and 4-jaw coupler. Trigger operated continuous flow gun with 3-way fill and air-bleed valve. Accepts 400g grease cartridges, bulk or manual fill.

Operating Pressure:	60-150psi
Delivery Pressure:	1200-5000psi
Inlet Size:	1/4" BSP
Optional 300mm Flexible Delivery Tube:	GGHE300

**C - D Cordless Grease Guns****Model No. SEE BELOW**

High power, professional, cordless grease guns. Ideal for in-field lubrication where power and speed are required. Suitable for 400g cartridges, manual or bulk filling. Features LCD battery condition indicator, air bleed and heavy-duty aluminium pressure head. Supplied with battery and mains charger in storage case.

	C	D
Model No:	CPG12V	CPG18V
Battery:	12V 2Ah Li-ion	18V 2Ah Li-ion
Pressure:	6000psi	8000psi
Flow Rate:	80g/min	100g/min
Hose Length:	680mm	700mm
Replacement Battery:	CPG12VBP	CPG18VBP
In-Car Power Adaptor:	CPG12V2-ICA	



Note: Kit only supplied with one canister.

E Manual/Air Grease Gun Kit**Model No. AK45KIT**

Features continuous flow air grease gun and lever type manual grease gun. Supplied with heavy-duty grease canister with viewing windows to check grease level. Air grease gun features 360° rotating head to help access hard-to-reach greasing points. Kit can be used with both bulk fill and cartridge grease and is ideal for site work where an air supply is not always available. Supplied with both rigid and flexible spouts.

Air Feed Operating Pressure:	60-150psi
Air Feed Delivery Pressure:	2400-6000psi
Inlet Size:	1/4" BSP
Manual Feed Delivery Pressure:	7000psi
Manual Delivery Per Stroke:	0.8cm³



Model No's CPG12V & CPG18V are supplied in storage case.

**F 18V 2Ah Lithium-ion Power Tool Battery for CPG18V****Model No. CPG18VBP**

18V 2Ah Lithium-ion battery pack for Model No. CPG18V.



12.5kg

**HEAVY
DUTY**

(Grease bucket
not included)

**A 12.5kg Heavy-Duty Bucket Greaser
with Follower Plate**
Model No. **AK45X**

Zinc die-cast pump head with pressed steel pump and carry handle. Suitable for 12.5kg grease buckets. Supplied with follower plate to prevent cavitation and ensure smooth flow of grease. Suitable for bulk packing bushings and bearings where requirement is for grease volume and not grease pressure. Includes rigid extensions and 4-jaw coupler.

Delivery Pressure:	2880psi
Delivery per Stroke:	3.8cm ³
Hose Length:	1.5m



12.5kg

**EXTRA
HEAVY
DUTY**

(Grease bucket
not included)

**B 12.5kg Extra-Heavy-Duty Bucket Greaser
with Follower Plate**
Model No. **AK455**

Solid steel pump and carry handle. Supplied with follower plate to prevent cavitation and ensure smooth flow of grease. Suitable for repetitive filling of high pressure low volume grease. Suitable for 12.5kg grease buckets. Includes rigid extension and 4-jaw coupler.

Delivery Pressure:	3500-6000psi
Delivery per Stroke:	1.5cm ³
Hose Length:	1.2m



12.5kg

**High
Volume**

**EXTRA
HEAVY
DUTY**

(Grease bucket
not included)

**C 12.5kg Extra-Heavy-Duty
Chassis Lube Filler Pump**
Model No. **AK456**

Zinc die-cast pump head with solid steel pump. High-volume, low-pressure output for filling auto chassis lubrication reservoirs. Central lube coupling supplied with spare plug-in adaptor.

Delivery Pressure:	900psi
Delivery per Stroke:	33cm ³
Hose Length:	1.5m



D - E Air Grease Kit Replacement Parts
Model No. **SEE BELOW**

Model No:	Description:
D AK453X.V3-06	Grease Control Valve with Z-Swivel
E AK453X.V3-08	Z-Swivel Connector

F - G Air Operated Grease Pumps
Model No. **SEE BELOW**

Fitted with high efficiency 50:1 air motor. Workshop tested reliability. Supplied with safety regulator to prevent over pressurisation of pump unit. Fitted with a follower plate to prevent pump unit cavitation and ensure a smooth flow of grease. Includes SAE100R2AT rated grease hose, z-swivel, control valve and bucket trolley.

	F	G
Model No:	AK452X	AK453X
Capacity:	12.5kg	50kg
Maximum Air Pressure:	150psi	150psi
Recommended Air Pressure:	115psi	115psi
Delivery Pressure:	5000psi	5000psi
Grease Delivery:	1100g/min	1100g/min
Air Consumption:	6cfm	6cfm



12.5kg

AIR Operated

(Grease bucket
not included)



50kg

AIR Operated

(Grease bucket
not included)

AUp to
8000psi

A Quick Connect Grease Coupler Model No. AK45

Manufactured with heat treated steel designed to withstand high pressures without deformation. Fitted with 1/8"BSPT female thread which enables this coupler to be used with multiple pieces of grease equipment. Ingenious design enables this coupler to firmly latch onto the grease fitting enabling hands-free operation compared to standard grease couplers, meaning less wasted grease around the fitting.

Maximum Pressure:	8000psi
Inlet Thread:	1/8"BSPT

**B**

B Needle Nose Grease Dispenser Model No. AK447

For use with all brands of manual grease gun (not for use with power greasers). Dispenses a fine bead of grease. Long nozzle provides access for hard-to-reach areas. Ideal for lubricating constant velocity joints.

Length:	170mm
----------------	-------

C

C 4-Jaw Heavy-Duty Hydraulic Connectors Model No. SEE BELOW

4-Jaw heavy-duty hydraulic connectors with 1/8"BSPT thread.

Model No:	Thread Size:	Pack Qty:
GGE1	1/8"BSPT	1
GGE5	1/8"BSPT	5

D

D 115pc Grease Nipple Assortment - Metric Model No. AB008GN

Contents (Approximate Quantity):

Straight;	M6 x 1mm (x10), M8 x 1mm (x10), M8 x 1.25mm (x10), M10 x 1mm (x10)
45° Angle;	M6 x 1mm (x10), M8 x 1mm (x5), M8 x 1.25mm (x10), M10 x 1mm (x10)
90° Angle;	M6 x 1mm (x10), M8 x 1mm (x10), M8 x 1.25mm (x10), M10 x 1mm (x10)

E

E 130pc Grease Nipple Assortment - Metric, BSP, UNF Model No. AB009GN

Contents (Approximate Quantity):

Straight Metric;	M6 x 1mm (x22), M8 x 1mm (x10), M10 x 1mm (x10)
Straight Imperial;	1/4"UNF (x10), 1/4"UNF (x10), 1/8"BSPT (x10)
45° Angle Metric;	M6 x 1mm (x10), M8 x 1mm (x10), M10 x 1mm (x10)
45° Angle Imperial;	1/4"UNF (x10), 1/4"BSPT (x8), 1/8"BSPT Gas (x10)

F

IMP

MM

F Straight Grease Nipples - Packs of 25 Model No. SEE BELOW

Straight grease nipples with Imperial/Metric threads.

Model No:	Thread Size:	Thread Type:	Pack Qty:
GNI16	1/4"BSPT	Imperial	25
GNI17	1/4"UNF	Imperial	25
GNI18	1/8"BSPT	Imperial	25
GNI19	10 x 1mm	Metric	25
GNI20	6 x 1mm	Metric	25
GNI21	8 x 1mm	Metric	25
GNI22	8 x 1.25mm	Metric	25

G

IMP

MM

G 45° Grease Nipples - Packs of 25 Model No. SEE BELOW

Angled grease nipples with Imperial/Metric threads.

Model No:	Thread Size:	Thread Type:	Pack Qty:
GNI10	1/4"UNF	Imperial	25
GNI11	1/8"BSPT	Imperial	25
GNI12	1/4"BSPT	Imperial	25
GNI13	10 x 1mm	Metric	25
GNI14	8 x 1mm	Metric	25
GNI15	8 x 1.25mm	Metric	25
GNI16	6 x 1mm	Metric	25
GNI17	8 x 1.25mm	Metric	25

H

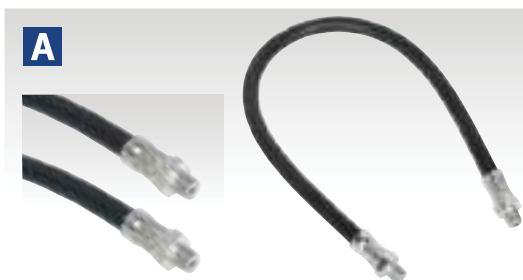
IMP

MM

H 90° Grease Nipples - Packs of 25 Model No. SEE BELOW

Angled grease nipples with Imperial/Metric threads.

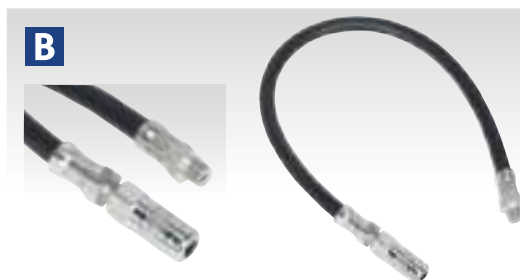
Model No:	Thread Size:	Thread Type:	Pack Qty:
GNI13	1/4"BSPT	Imperial	25
GNI14	1/4"UNF	Imperial	25
GNI15	1/8"BSPT	Imperial	25
GNI16	10 x 1mm	Metric	25
GNI17	6 x 1mm	Metric	25
GNI18	8 x 1mm	Metric	25
GNI19	8 x 1.25mm	Metric	25



A Flexible Rubber Delivery Hoses 1/8\"BSP
Model No. [SEE BELOW](#)

Flexible rubber hoses for manual grease guns. Suitable for use with air operated grease guns within pressure range of 3000 to 4000psi.

Model No:	Length:	Thread Size:
GGH300	300mm	1/8\"BSP
GGH450	450mm	1/8\"BSP



B Flexible Rubber Grease Gun Delivery Hoses with 4-Jaw Connector
Model No. [SEE BELOW](#)

Flexible rubber hoses for manual grease guns. Supplied with 4-jaw grease gun end. Suitable for use with air operated grease guns within pressure range of 3000 to 4000psi.

Model No:	Length:	Thread Size:
GGHE300	300mm	1/8\"BSP
GGHE450	450mm	1/8\"BSP



C Flexible Rubber Delivery Hoses with 4-Jaw Connector & Quick Release Coupling
Model No. [SEE BELOW](#)

Flexible rubber snap-on extension with end hose. Supplied with 4-jaw grease gun end. Suitable for use with air operated grease guns within pressure range of 3000 to 4000psi.

Model No:	Length:	Thread Size:
GGSF300	300mm	1/8\"BSP
GGSF450	450mm	1/8\"BSP



D 500g Copper Grease Tin
Model No. [SCS109](#)

Anti-seize copper grease, protects against rust, oxidation and other corrosion.

Size:	500g
-------	------



E 500g Red Rubber Grease Tin
Model No. [SCS110](#)

Lubricating red rubber grease, ideal for use on brake assemblies.

Size:	500g
-------	------



F 500g Clear Silicone Grease Tin
Model No. [SCS102](#)

Clear silicone grease for use on UPVC push-fit soil and waste drainage and insulation of electrical terminals.

Size:	500g
-------	------



G 400g Screw-Type Lithium EP2 Grease Cartridge
Model No. [SEE BELOW](#)

Screw-type multipurpose Lithium EP2 grease cartridge suitable for use with Model No's AK4403, AK52 & AK53 Grease Guns. Lithium grease ideal for a wide range of lubrication applications. Cartridge screws directly into grease gun head making it quicker and cleaner than standard cartridges.

Size:	400g
Thread Size:	M33 x 2.5mm
Model No:	Pack Qty:
SCS107	1
SCS108	12



H 400g EP2 Lithium Grease Cartridge
Model No. [SEE BELOW](#)

Multipurpose EP2 grease cartridge suitable for use with all plunger type grease guns. Lithium grease, ideal for a wide range of applications.

Model No:	Pack Qty:
SGC1	1
SGC12	12



I 400g EP2 Lithium Complex Grease Cartridge
Model No. [SCS106](#)

High quality EP2 lithium complex grease cartridge. Suitable for applications involving extreme pressure or changes in temperature.

Size:	400g
-------	------

A 6.5L Manual Vacuum Oil & Fluid Extractor Model No. S01169

6.5L Capacity device constructed from composite materials and suitable for the extraction of all types of engine, transmission and lubricating oils from cars, motorcycles, marine engines, stationary engines and industrial machinery. Also suitable for low viscosity fluids such as water. Supplied with Ø4, Ø6 and Ø8mm suction probes and Ø10mm x 1m extension tube. To remove oil from a car engine, simply push the probe down the dipstick hole and pump the handle on the top of the unit. Probes can be stored in the holder when not in use. Can also be used for draining fish tanks, basins and sinks.

Capacity:	6.5L
Suction Probes:	Ø4 x 1000, Ø6 x 1000, Ø8 x 1000mm
Extension Tube:	Ø10 x 1000mm



C 9L Manual Vacuum Oil & Fluid Extractor Model No. TP6901

9L Capacity device constructed from composite materials. Uses manual pump to generate vacuum. Suitable for the extraction of all types of engine, transmission and lubricating oils from cars, motorcycles, marine engines, stationary engines and industrial machinery. Also suitable for low viscosity fluids such as water. Supplied with Ø6 and Ø10mm suction probes and brake/clutch bleeding hose. Uses probes to extract engine oil through the dipstick tube.

Capacity:	9L
Suction Probes:	Ø6 x 1100, Ø10 x 1100mm
Extension Tube:	Ø8 x 1100mm

E 9L Manual/Air Vacuum Oil & Fluid Extractor Model No. S01168

9L Capacity device constructed from composite materials. Uses manual pump or compressed air supply to generate vacuum. Suitable for the extraction of all types of engine, transmission and lubricating oil from cars, motorcycles, marine engines, stationary engines and industrial machinery. Also suitable for low viscosity fluids such as water. Supplied with Ø4, Ø6, Ø8 x 1000mm suction probes, Ø10 x 1000mm extension tube and 1200mm brake bleed tube. Uses probes to extract engine oil through the dipstick tube.

Capacity:	9L
Suction Probes:	Ø4 x 1000mm, Ø6 x 1000mm, Ø8 x 1000mm
Extension Tube:	Ø10 x 1000mm
Brake Bleed Tube:	Ø10 x 1200mm



B 6.5L Manual Vacuum Oil & Fluid Extractor Model No. TP69

6.5L Capacity device constructed from composite materials and suitable for the extraction of all types of engine, transmission and lubricating oils from cars, motorcycles, marine engines, stationary engines and industrial machinery. Also suitable for low viscosity fluids such as water. Supplied with Ø5.8 and Ø6.7mm sprung steel lined suction probes and a Ø9.8mm x 1m extension tube. Uses probes to drain engine oil through the dipstick hole, and also features an internal float valve for automatic cut-off when unit has reached maximum capacity. Probes can be stored in the holder when not in use. Can also be used for draining fish tanks, basins and sinks. Unit can be tipped 90° for easier emptying.

Capacity:	6.5L
Suction Probes:	Ø5.8 x 850, Ø6.7 x 850mm
Extension Tube:	Ø9.8 x 1000mm

D 9L Manual Vacuum Oil & Fluid Extractor Model No. S01167

9L Capacity device constructed from composite materials. Uses manual pump to generate vacuum. Suitable for the extraction of all types of engine, transmission and lubricating oil from cars, motorcycles, marine engines, stationary engines and industrial machinery. Also suitable for low viscosity fluids such as water. Supplied with Ø4, Ø6, Ø8 and Ø10 x 1000mm suction probes and Ø4 x 600mm brass extension tube. Uses probes to extract engine oil through the dipstick tube.

Capacity:	9L
Suction Probes:	Ø4 x 1000mm, Ø6 x 1000mm, Ø8 x 1000mm, Ø10 x 1000mm
Extension Tube:	Brass Ø4 x 600mm

F 9L Manual/Air Vacuum Oil & Fluid Extractor Model No. TP6904

9L Capacity device constructed from composite materials. Uses manual pump or compressed air supply to generate vacuum. Suitable for the extraction of all types of engine, transmission and lubricating oils from cars, motorcycles, marine engines, stationary engines and industrial machinery. Also suitable for low viscosity fluids such as water. Supplied with Ø6 and Ø10mm suction probes and brake/clutch bleeding hose. Uses probes to extract engine oil through the dipstick tube.

Capacity:	9L
Suction Probes:	Ø6 x 1100, Ø10 x 1100mm
Extension Tube:	Ø8 x 1100mm
Air Supply:	90psi(5cfm)



Fluid Pumps

See our full range of Fluid Pumps on pages 646 to 651.



A - B Manual Vacuum Oil & Fluid Extractors with Discharge Model No. SEE RIGHT

Vacuum oil and fluid extractors constructed from composite materials and suitable for extraction of all types of engine, transmission and lubricating oils from cars, motorcycles, marine engines, stationary engines and industrial machinery. Features a controlled discharge function for emptying the unit. Also suitable for low viscosity fluids such as water. Supplied with Ø5.8, Ø6.7mm suction probes and a 1m extension tube. Uses probes to drain engine oil through the dipstick hole. Also suitable for draining fish tanks, basins and sinks.

A

6L

Manual Pump

Vacuum Discharge



B

18L

Manual Pump

Vacuum Discharge



A 6L Manual Vacuum Oil & Fluid Extractor with Discharge Model No. TP6905

Capacity:	6L
Suction Probes:	Ø5.8 x 870, Ø6.7 x 870mm
Extension Tube:	Ø9.8 x 1010mm

B 18L Manual Vacuum Oil & Fluid Extractor with Discharge Model No. TP6906

Capacity:	18L
Suction Probes:	Ø5.8 x 870, Ø6.7 x 870mm
Extension Tube:	Ø9.8 x 1010mm

C

5.5L

Manual Pump



C 5.5L Manual Vacuum Oil & Fluid Extractor Model No. TP696

5.5L Capacity device constructed from composite materials and suitable for the extraction of engine oils from cars, motorcycles, marine engines, stationary engines and industrial machinery. Also suitable for low viscosity fluids such as water. Supplied with 2.1m suction probe, easy-pour spout and cover cap. Use probe to remove engine oil through the dipstick tube.

Capacity:	5.5L
Suction Probe:	2100mm

D

NEW

Manual Pump

18L



D 18L Manual Vacuum Oil & Fluid Extractor Model No. TP6908

18L Capacity device constructed from composite materials. Uses manual pump to generate vacuum. Suitable for the extraction of all types of engine, transmission and lubricating oil from cars, motorcycles, marine engines, stationary engines and industrial machinery. Also suitable for low viscosity fluids such as water. Supplied with Ø5.8 and Ø6.7mm suction probes and Ø9.8mm extension tube. Uses probes to extract engine oil through the dipstick tube. Unit can be tipped past 90° for easier emptying. Fitted with three castor wheels enabling easy manoeuvrability when the unit is full.

Capacity:	18L
Suction Probes:	Ø5.8 x 870, Ø6.7 x 870mm
Extension Tube:	Ø9.8 x 1010mm

E

230V

12L

Manual Discharge



E 12L Mobile Oil Extractor Model No. AK466D

Mobile oil drainer designed to extract oil via the dipstick tube. 12L Capacity tank allows easy collection and safe disposal of waste oil. Supplied with two 650mm long flexible probes in 5mm and 8mm diameters. Two 800mm rigid brass probes with 6mm and 8mm diameters and a VW Golf probe. Suitable for Mercedes.

Capacity:	12L
Supply:	230V
Motor Power:	500W

Jugs & Funnels



For our full range of Jugs & Funnels, see pages 660 - 664.

A 36L Mobile Oil Drainer Manual Discharge Model No. AK36D

Polyethylene reservoir, 36L capacity, mounted on four castors for mobility. Drain pan, with filter, on height adjustable down tube. Hand grips for manual emptying.

Capacity:	36L
Minimum Height to Pan:	760mm
Maximum Height to Pan:	1600mm
Gravity Feed:	✓
Suction Probe:	✗
Gravity Discharge:	✗
Air Discharge:	✗
Pump Discharge:	✗

B 80L Mobile Oil Drainer Gravity Discharge Model No. AK80D

Polyethylene reservoir, 80L capacity, mounted on four castors for mobility. Drain pan, with filter, on height adjustable down tube. Use rotary pump or gravity drain tap for emptying.

Capacity:	80L
Minimum Height to Pan:	940mm
Maximum Height to Pan:	1800mm
Gravity Feed:	✓
Suction Probe:	✗
Gravity Discharge:	✓
Air Discharge:	✗
Pump Discharge:	✗

C 75L Pump Away Mobile Oil Drainer Model No. AK450DX

75L Reservoir and telescopic funnel fitted with grid filter. Fitted with female dry-fit coupling for connection to Model No. AK450DP Pump Away Station. Includes full drum indicator.

Capacity:	75L
Minimum Height to Pan:	890mm
Maximum Height to Pan:	1620mm
Gravity Feed:	✓
Suction Probe:	✗
Gravity Discharge:	✗
Air Discharge:	✓
Pump Discharge:	✗

D Air Powered Pump Away Station Model No. AK450DP

Air operated 1:1 oil pump, suitable for use with Model No. AK450DX oil drain unit. Supplied with a wall mounting bracket, 2m flexible hose with dry-fit male and female quick couplings to attach it to the drain unit. 2m Flexible air supply hose with filter, lubricator and regulator assembly is also included. The pump can be plumbed into a run of pipework to a waste oil storage point sited out of the workshop.

Minimum/Maximum Air Pressure:	30/120psi
Air Consumption:	8.8cfm
Oil Delivery @ 90psi:	60L/min



E Spill Control Kits

See page 653 for full specification.



IMPORTANT

Model No. AK450DX cannot be used unless a pump away station is purchased. One pump unit can only be used to empty one drainer at a time, although the time taken to empty the reservoir is short. It is usual for operators to purchase one pump away station and several oil drainers. Model No. AK450DP is supplied with its own filter, regulator and lubricator to ensure trouble-free operation.

AIR DISCHARGE

The drainer uses a blanket of air to squeeze the oil out of the reservoir. These units are not suitable for connection to a closed system and are not covered by regulations requiring regular pressure testing.

PROBE SUCTION

These units are supplied with a variety of suction probes which can be used to extract warm oil from the sump through the dipstick tube.



AIR DISCHARGE

Model No. AK450DX is fitted with a Dry Fit Coupling. In order to discharge the drainers they must be connected to a pump station which is sold separately. See Model No. AK450DP.



A 35L Air Discharge Mobile Oil Drainer with Probes

Model No. **AK456DX**

Steel fabricated 35L reservoir. Height-adjustable steel drain pan, fitted with grid filter. Features gravity feed reservoir with air discharge hose. Includes quick release oil dipstick probes, powered by venturi suction pump. Fitted with heavy-duty wheels and castors for easy mobility.



B 65L Air Discharge Waste Mobile Oil Drainer

Model No. **AK451DX**

Steel fabricated 65L reservoir and telescopic steel drain pan fitted with grid filter. Air discharge drain with hose. Fitted with reservoir oil level indicator tube.



C 80L Cantilever Air Discharge Mobile Oil Drainer with Probes

Model No. **AK462DX**

Steel fabricated 80L reservoir with suction probes and air discharge. Unit features cantilever oil drain pan which is suitable for use either under a lift or on the forecourt. Drain pan utilises vacuum suction when in the down position and is fitted with a bogey wheel for easy manoeuvring. Fitted with oil level indicator tube and supplied with Mercedes adaptor plus a selection of probes.



D 90L Air Discharge Mobile Oil Drainer with Probes

Model No. **AK459DX**

Steel fabricated 90L reservoir. Height-adjustable steel drain pan, fitted with grid filter. Gravity feed reservoir with air discharge hose. Includes quick release oil dipstick probes, plus adaptors for BMW and VW, powered by venturi suction pump. Fitted with reservoir oil level indicator tube. Heavy-duty wheels and castors for easy mobility.



E 110L Air Discharge Mobile Oil Drainer

Model No. **AK458DX**

Steel fabricated 110L reservoir. Height-adjustable steel drain pan, fitted with filter, and gravity feed reservoir with air discharge hose. Fitted with reservoir oil level indicator tube. Heavy-duty wheels and castors for easy mobility.



CANTILEVER OIL DRAINER

In lowered position, the AK462DX pan extends 2.2m, making it suitable for forecourt use, and utilises suction evacuation of drain pan.

Model No:	Capacity:	Min. Height to Pan:	Max. Height to Pan:	Gravity Feed:	Suction Probe:	Gravity Discharge:	Air Discharge:
A AK456DX	35L	935mm	1420mm	✓	✓	✗	✓
B AK451DX	65L	1070mm	1590mm	✓	✗	✗	✓
C AK462DX	80L	150mm	1600mm	✓	✓	✗	✓
D AK459DX	90L	1300mm	1750mm	✓	✓	✗	✓
E AK458DX	110L	1250mm	1830mm	✓	✗	✗	✓

A - C 64L Low Level Oil Drainers
Model No. SEE BELOW

Low level drainers suitable for use on the forecourt and workshop floor. Steel and high-impact polypropylene fabricated units with a capacity of 64L. Model No. AK467D fitted with gravity drain tap for manual discharge. Model Numbers AK467DXP and AK468DXP fitted with rotary pump and hose for faster discharge. Fully portable with two castors, two fixed wheels and handle for manoeuvring around the workshop.



	A	B	C
Model No:	AK467D	AK467DXP	AK468DXP
Capacity:	64L	64L	64L
Maximum Height to Pan:	285mm	285mm	250mm
Gravity Feed:	✓	✓	✓
Suction Probe:	✗	✗	✗
Gravity Discharge:	✓	✓	✓
Air Discharge:	✗	✗	✗
Pump Discharge:	✗	✓	✓



D Oil Filter/Bottle Drain Pan
Model No. DRP2030

Designed to sit onto 20/30L containers, for the safe drainage of oil from used filters and bottles. Features four location points to keep bottles in the drainage position.

Diameter:	Ø350mm
Height:	130mm



E Drum Drain Pan
Model No. DRP19

Manufactured from hard-wearing polycarbonate material preventing corrosion. Fits to top of drum for draining unused oil back into drum. Features built-in filter grid and lipped edge for easy handling.

Diameter:	Ø600mm
Height:	150mm



F Waste Oil Drain Collector
Model No. AK449D

Mobile waste oil drainer for use with 25L or other suitable containers. Telescopic drain pan with filter grid and ball valve control. Arm fully adjustable in height and depth and fitted with locking nuts for pre-determined height selection. Heavy-duty design trolley with handle, two castors and two fixed wheels.

Minimum Height to Pan:	1090mm
Maximum Height to Pan:	1740mm

Waste Oil Disposal

Waste oil is classed as a hazardous waste and therefore must be handled and disposed of according to local government guidelines.

A

NEW

5L

9L

15L

25L

100L

120L

Low Profile



A Low Profile Drip Trays
Model No. SEE BELOW

Low profile drip trays manufactured from hard-wearing recycled polypropylene. These have a broad appeal to both the classic car user and general mechanic. Purpose-made for the recovery of oil and fluids, these drip trays can be left under most vehicles due to their low profile design. These are ideal for use over prolonged periods of time, catching any drips that may occur whilst in storage or in the workshop. Model No's DRPL15, DRPL25, DRPL100 and DRPL120 are extra-long in order to cover drips from both engine and gearbox.

Model No:	NEW DRPL05	DRPL09	DRPL15	DRPL25	NEW DRPL100	NEW DRPL120
Size (W x D x H):	630 x 475 x 30mm	570 x 390 x 50mm	1000 x 400 x 50mm	1100 x 550 x 50mm	1000 x 1000 x 120mm	1200 x 1200 x 120mm
Capacity:	5L	9L	15L	25L	100L	120L

B

54L



B 54L Wheeled Oil/Fluid Drain & Recycling Container

Model No. DRP09

Ensures safe and clean collection, transportation and temporary storage of waste oil. Features heavy-duty construction with wheeled undercarriage for easier transportation of full drainer. Includes four integral oil filter drain positions. Stores flat or in upright position.

Capacity: 54L

Size (W x D x H): 915 x 660 x 240mm



C

30L



C 30L Low Profile Oil/Fluid Drainer

Model No. DRP011

Low profile design is ideal for the professional mechanic and DIY user. Ensures safe and clean collection, transportation and temporary storage of waste fluids. Four castors provide easy manoeuvrability. Includes grid to aid draining of filters and to prevent debris entering the tank.

Capacity: 30L

Size (W x D x H): 850 x 600 x 125mm



A - F Drain Pans
Model No. SEE BELOW

These drain pans have a broad appeal and are suitable for both the DIY user and professional mechanic. Purpose-made for the recovery of oil and antifreeze, these pans help keep the workshop floor free from oily residue and aid return of oil to recycling containers with minimum risk of spills or splashes. They are also suitable for parts cleaning operations with emulsifiable solvents such as Sealey Model No's AK25 and AK2501. Features include:

- ✓

Made from high-density polyethylene with UV stabiliser.
- ✓

Heavy wall construction stays rigid, even with hot oil.
- ✓

Excess capacity helps prevent overflow or spillage.
- ✓

Large handles, featured on Model No's DRP02-DRP04, are positioned to aid carrying and pouring.
- ✓

Resistant to most chemicals and solvents*.
- ✓

Will not dent or rust and are easy to clean.
- *Not suitable for spray gun cleaner.



A 4.5L Oil/Fluid Drain Pan
Model No. DRP00

Suitable for oil or coolant and large enough for a single oil change on smaller engines. Includes pouring lip, hanging hole and back shelf with protruding stub for draining oil filters.

Capacity:	4.5L
Diameter:	Ø300mm
Height:	100mm



B 6L Oil/Fluid Drain Pan
Model No. DRP14

Purpose-made for the recovery of oil and antifreeze, the pan helps to keep the workshop floor free from oily residue and aid return of oil to recycling containers with minimum risk of spills or splashes. Manufactured from polypropylene. Includes oil pouring lip making it easy to dispose of oil/fluids. Will not dent or rust and is easy to clean.

Capacity:	6L
Diameter:	Ø340mm
Height:	90mm



C 8L Oil/Fluid Drain Pan
Model No. DRP01

Large enough for a single oil change. Includes pouring lip, hanging hole and back shelf with protruding stub for draining oil filters.

Capacity:	8L
Diameter:	Ø365mm
Height:	100mm



DRP02, DRP03 & DRP04 feature spill-proof lip to aid carrying and pouring.



DRP02, DRP03 & DRP04 have an enclosed pouring spout to reduce spills and splashes.



DRP02, DRP03 & DRP04 feature large handles for left or right handed use.



All drain pans are made from impact resistant high-density material.



DRP19 fits to top of drum for draining unused oil back into drum. See page 642.



D 7.6L Oil/Fluid Drain Pan
Model No. DRP02

Features anti-splash lip that contains fluid when carrying or pouring. Large handles and enclosed pouring spout makes easy work of returning oil/fluid to recycling container.

Capacity:	7.6L
Diameter:	Ø390mm
Height:	120mm



E 17L Oil/Fluid Drain Pan
Model No. DRP03

Suitable for multiple oil changes. Features anti-splash lip that contains fluid when carrying or pouring. Large handles and enclosed pouring spout makes easy work of returning oil/fluid to recycling container.

Capacity:	17L
Diameter:	Ø460mm
Height:	150mm



F 17L Antifreeze/Fluid Drain Pan
Model No. DRP04

Colour-coded version of Model No. DRP03 helps keep different fluids isolated and reduces cross contamination.

Capacity:	17L
Diameter:	Ø460mm
Height:	150mm



A Oil/Fluid Drain & Recycle Containers
Model No. [SEE BELOW](#)

Purpose-made for the recovery of oil and antifreeze, these pans help keep the workshop floor free from oily residue and aid return of oil to recycling containers with minimum risk of spills or splashes. Made from high-density Polyethylene with UV stabiliser. Heavy wall construction stays rigid, even with hot oil. Excess capacity helps prevent overflow or spillage. Resistant to most chemicals and solvents. Will not dent or rust and are easy to clean. Includes drain vent to aid smooth flow of oil.

Model No:	DRP06	DRP07
Capacity:	5L	10L
Size (W x D x H):	440 x 290 x 135mm	570 x 320 x 125mm



B 16L Oil/Fluid Drain & Recycle Container
Model No. [DRP05](#)

Convenient for the safe, clean collection and temporary storage and carriage of waste oil. Integral oil filter drain position. Suitable for multiple oil changes. Includes drain vent to aid smooth flow of oil.

Capacity:	16L
Diameter:	Ø460mm
Height:	180mm



C 12L Plastic Drain Pan
Model No. [DRPH12](#)

Lightweight drain pan made of hard-wearing polypropylene. Purpose-made for the recovery of oil and fluids. Ideal for cleaning and storing vehicle components or used to catch any drips that may occur over a long period of time whilst in storage or in the workshop.

Capacity:	12L
Size (W x D x H):	450 x 350 x 90mm



D Metal Drain Pans
Model No. [SEE BELOW](#)

Not only suitable for oil changes, these zinc plated pans are ideal for cleaning and storing vehicle components. May also be used as drip trays under vehicles.

Model No:	DRPM1	DRPM2	DRPM3	DRPM4
Capacity:	9L	12L	16L	20L
Overall Size (W x D x H):	432 x 331 x 89mm	489 x 371 x 91mm	432 x 331 x 143mm	489 x 371 x 153mm





A AdBlue® Lift Action Pump
Model No. TP6806

Heavy-duty polypropylene construction lift pump. Manufactured with polyethylene parts suitable for transferring AdBlue®. Fitted with 2"Mauser and 2"BSP adaptor for use with 205L drums. Supplied with 1.36m discharge hose. Delivers approximately 250ml per stroke.



B AdBlue® Heavy-Duty Rotary Pump
Model No. TP57

Polypropylene rotary pump, specially fitted with Bakelite vanes for transferring AdBlue® as well as acids, alkalis, oils and other fluids of similar viscosity. Supplied with 1300mm polyethylene extension hose. Features 2"BSP connector suitable for use on 205L drums. Delivers approximately 0.35L/revolution.



C AdBlue® Heavy-Duty Lever Action Pump
Model No. TP6607

Self-priming lever pump fitted with anti-drip nozzle, 2"BSP connector and dip tube to suit 100 or 205L drums. Added filter in pump to prevent any unwanted large particles getting into fluid system. Specially constructed with Viton® seals for transferring AdBlue®. 1" x 2000mm Hose for hands-free applications. Approximately 330ml per stroke discharge.



D AdBlue® Lever Action Pump
Model No. TP6809

Lever action pump specifically for use with AdBlue®. The dip tube extends from 350mm to 980mm to fit 100L to 205L drums or barrels, or 1000L IBC tank. Specially constructed with Viton® seals for transferring AdBlue®. 1.6m Delivery hose for hands-free applications. Approximately 500ml per stroke discharge. Can also be used with water, antifreeze, windshield washer fluid or mild detergents.



E - F AdBlue® Filling Funnels
Model No. SEE BELOW

Specially designed AdBlue® funnels screw directly onto filler neck alleviating risk of spills. Units are fitted with a manual internal valve which, when opened, allows fluid to pass through. Features a large capacity of 1.1L and fitted with a click close lid to keep dirt and debris out when not in use. Available in both straight and angled configurations depending on position of AdBlue® filler neck on vehicle.

Model No:	Spout Type:
E ADB07A	Angled
F ADB07S	Straight



G AdBlue® Digital Flow Meter
Model No. ADB02

Robust rubber housing with integral digital electronic metering. Easy-to-read large, 4-digit, 28mm high LCD display calibrated in litres. Features flow rate indication. 1"x1"BSP Male/Female fittings. Suitable for use with AdBlue®. Powered by 2 x AAA batteries (supplied). IP55 Rated protection.

Flow Rate:	7-120L/min
Maximum Working Pressure:	145psi



H - I AdBlue® Elbow Connectors
Model No. SEE BELOW

Elbow connectors for use with Adblue® delivery systems. Made from Polypropylene with Viton® seals.

Model No:	Connection:
H ADB10EC	1"BSP Both Ends
I ADB10EHC	1"BSP Thread and 3/4" Barb



J AdBlue® IBC Connector SEC
Model No. ADB01

This IBC connector works by screwing the valve open/closed without generating any angular pressure on the IBC connection point. Once connected, the SEC valve ensures that the AdBlue® is not contaminated by the surrounding environment of the IBC tank. Suitable for use with all Sealey AdBlue® pumps.



A AdBlue® 12V Portable Transfer Pump
Model No. TP9912

Electric 12V membrane pump specifically designed for the distribution of AdBlue®. Self-priming unit provides a flow rate of up to 40L/min. Supplied with 4m hose, manual delivery nozzle and 2m cables with battery clamps.

Voltage:	12V
Speed:	2800rpm
Current:	18A
Power:	260W
Duty Cycle:	30min/hr
Flow Rate:	40L/min



C 1.5L AdBlue® Retriever
Model No. CV557

Purposely designed for the extraction of AdBlue® from a commercial vehicle reservoir tank. Extracts up to 1.5L, saving time and money when compared to other methods.

Capacity:	1.5L
Tube Length:	432mm



D AdBlue® Manual Delivery Nozzle
Model No. ADB03

Polypropylene constructed body and spout for durability. Designed for use with AdBlue®. Supplied with removable 3/4\"/>

Inlet Size:	3/4\"/>
-------------	---------



Model No's TP9912 and TP99230 are wall mountable for easy positioning around garage/workshop.



E AdBlue® Automatic Delivery Nozzle
Model No. ADB04

Heavy-duty automatic AdBlue® nozzle manufactured from robust aluminium. Fitted with micro-touch valve for instant shut-off when tank is full. Fitted with 3/4\"/>

Inlet Size:	3/4\"/>
-------------	---------



B AdBlue® 230V Portable Transfer Pump
Model No. TP99230

Electric 230V membrane pump specifically designed for the distribution of AdBlue®. Self-priming unit provides a flow rate of up to 40L/min. Supplied with 4m hose, manual delivery nozzle and 3-pin plug.

Voltage:	230V
Speed:	2900rpm
Current:	2A
Power:	370W
Duty Cycle:	Continuous
Flow Rate:	40L/min



Model No. ADB06 is fitted with a built-in flow meter to accurately fill tanks.



F AdBlue® Professional Automatic Delivery Nozzle with Digital Meter
Model No. ADB06

Lightweight yet durable nozzle developed to meet the International Standards of AdBlue® dispensing. Incorporates an ADB02 digital flow meter, which allows the user to view the delivery readings at the vehicle. Manufactured using AdBlue® compliant materials and fitted with 3/4\"/>

Inlet Size:	3/4\"/>
-------------	---------



A High Flow Heavy-Duty Rotary Pump for 205L Drum
Model No. TP6807

Heavy-duty cast steel body suitable for use with low viscosity products such as oils, diesel, antifreeze and other non-corrosive fluids. Supplied with 2" BSP adaptor and 3pc dip tube suitable for use on 205L drums. Delivers approximately 1L/revolution, emptying a 205L drum in three minutes.



B Rotary Pump for 205L Drum
Model No. TP55

Cast steel body with machined bore and rotor. Suitable for oils, antifreeze, degreasants and other non-corrosive fluids. Supplied with 2" BSP adaptor and suitable for use on 205L drums. Delivers approximately 0.2L/revolution.



C Rotary Pump for 205L Drum
Model No. TP54

Cast steel body, suitable for oils, antifreeze, degreasants and other non-corrosive fluids. Supplied with 2" BSP adaptor and is suitable for use on 205L drums. Delivers approximately 0.3L/revolution.



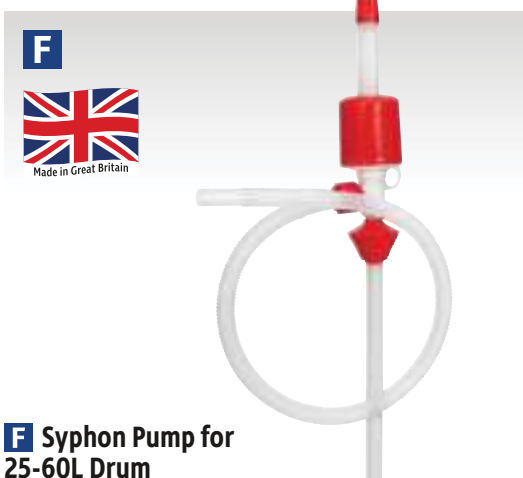
D Syphon Pump for 60-205L Drum
Model No. TP78

Composite pump with self-priming feature. Suitable for oils and non-aggressive chemicals. For use on 60-205L drums. Delivers approximately 17L/min.



E High Flow Syphon Pump for 205L Drum
Model No. TP781

Easy-to-use polyethylene pump with self-priming feature. Equipped with vent cap to stop discharge and flexible corrugated discharge tube. Suitable for oils and non-aggressive chemicals. For use on 205L drums. Delivers approximately 21L/min.



F Syphon Pump for 25-60L Drum
Model No. TP77

Composite pump with self-priming feature. Suitable for oils and non-aggressive chemicals. For use on 25-60L drums. Delivers approximately 8L/min.



G 1L Multipurpose Mini Pump
Model No TP6804

Multipurpose pump perfect for topping up difficult to access points on motor vehicles, lawnmowers, chainsaws and other jobs around the workshop and home. One litre capacity suitable for all engine oils, transmission fluids, brake fluids and general purpose cleaners.



See **E** for optional non-drip nozzle.

A Lever Pump Model No. TP68

Steel barrelled, self-priming, lever pump. Supplied with 2" BSP adaptor and dip tube suitable for 25 to 205L drums. Suitable for oils, antifreeze, degreasants and other non-corrosive fluids. Delivers approximately 300ml per stroke.



D Lever Action Pump Model No. TP6803

Polypropylene lever pump with steel rod and dip tube, suitable for use with oils, antifreeze, degreasants and other non-corrosive fluids. Features polyoxymethylene handle to prevent aggressive fluids melting the handle. Fitted with 360° outlet nozzle. Suitable for 205L drums. Delivers approximately 300ml per stroke.



HEAVY DUTY



G Self-Priming Heavy-Duty Lever Action Pump Model No. TP66

Self-priming lever pump fitted with anti-drip nozzle, 2" BSP connector and dip tube to suit 100 or 205L drums. Suitable for oils, antifreeze, paraffin and other non-corrosive fluids. Approximately 330ml per stroke discharge. Optional 1200mm dip tube Model No. TP66/ACC.



500ml per stroke

HIGH FLOW

HEAVY DUTY

B Heavy-Duty High Flow Lever Pump Model No. TP6801

Steel barrelled, self-priming, lever pump. Supplied with 2" BSP adaptor and dip tube suitable for 50 to 205L drums. Suitable for oils, antifreeze, degreasants and other non-corrosive fluids. High flow unit delivers approximately 500ml per stroke. Supplied with two delivery nozzles, one standard swan neck and one acute angle with filter for removing impurities from fluids.



E Non-Drip Nozzle for TP68 Model No. TP68NDN

Optional accessory non-drip nozzle for use with Model No. TP68. Can be closed to prevent dripping of liquid when finished. Fitted with protective cover to safeguard from debris.



H Battery Operated Jerry Can Pump Model No. TP80

Easily transfers fluid from 5, 10 and 20L jerry cans. Compatible for use with diesel and water. Hook storage design allows pump to attach onto fuel can and features a height-adjustable control to accommodate different sized containers. Fitted with auto-stop feature to prevent overfilling. Operated by an electric motor powered by 2 x AA batteries (not included). Not suitable for use with petrol or kerosene.

Hose Length:	700mm
Flow Rate:	9L/min
Battery:	2 x AA (not included)



HEAVY DUTY

C Heavy-Duty Swivel Handle Lever Pump Model No. TP6802

Heavy-duty steel barrelled, self-priming, lever pump. Supplied with 2" BSP adaptor and dip tube suitable for 25 to 205L drums. Fitted with non-drip spout and swivel handle. Suitable for oils, antifreeze, degreasants and other non-corrosive fluids. Delivers approximately 400ml per stroke.



AIR Operated



F Air Operated Transfer Pump Model No. TP90

Polypropylene body with acetal piston and nitrile seals. Self-priming unit with anti-drip shut-off valve. Body is fitted with a 2" BSP adaptor and 915mm dip tube suitable to fit 205L drums. Compatible with most fluids capable of being stored in plastic or metal drums. Not suitable for aggressive chemicals. A compatibility chart is provided.

Delivery:	15L/min
Operating Pressure:	30-100psi
Air Consumption:	4.4cfm
Optional Extension Hose Kit:	TP90HK





A Self-Priming Lift Action Pump
Model No. **TP6805**

Heavy-duty steel barrelled, self-priming, lift pump. Supplied with adjustable 2" BSP adaptor and dip tube suitable for 25 to 205L drums. Suitable for oils, antifreeze, degreasants and other non-corrosive fluids. Delivers approximately 0.5L per full stroke.



D 205L Lift Action Drum Pump with Measure Kit
Model No. **TP6808**

Made from high quality polypropylene and LDPE plastic, pump has a broad chemical resistance, including mild solvents. Acid resistant, caustic resistant, and resistant to chlorine based chemicals. Pumps soaps, cleaning chemicals, sanitisers, antifreeze, AdBlue®, battery acid and more. Supplied with adjustable 2" BSP adaptor and dip tube suitable for 205L drums. Features lift action operation which pumps on the way up as well as the down push, enabling a larger delivery per stroke. Supplied with a lock on measuring bottle for effective pumping with no leaks or spillages. Pump also features a locking strap to prevent accidental operation whilst not in use.



Model No. SOLV/SFU supplied fitted with Universal Adaptor Model No. SOLV/SFX.



B Self-Priming Heavy-Duty Displacement Pump
Model No. **TP88**

Self-priming, pistonless, displacement pump fitted with non-drip nozzle and 2" BSP adaptor and dip tube. Suitable for oils, antifreeze, degreasants and other non-corrosive fluids. Fitted with nitrile seals. Approximately 250ml delivery per stroke. Accessory kit allows use on most containers and drums from 25-205L.

Optional Accessory Kit: **TP88/ACC**



E-H Solvent Safety Funnels
Model No. **SEE BELOW**

Fitted with hinged lid to comply with solvent handling regulations. Multiple fixing options available, including universal adaptor Model No. SOLV/SFX for drums with integral, pull-out pouring spout.

Model No:	Description:	Fitting:
E SOLV/SF	Safety Funnel	2" Female
F SOLV/SFU	Safety Funnel with Universal Adaptor	n/a
G SOLV/SFX	Universal Adaptor	n/a
H SOLV/SFA	Adaptor	2" Male



C Self-Priming Piston Pump
Model No. **TP89**

Self-priming, piston pump fitted with anti-drip nozzle and 2" BSP adaptor and dip tube. Suitable for oils, antifreeze, degreasants and other non-corrosive fluids. Unit will deliver 200ml per stroke but by using the two sleeves supplied, delivery can be limited to 40, 80 or 140ml per stroke. Will fit most containers and drums from 25-205L.



I Thinner Pumps
Model No. **SEE BELOW**

Manufactured from nylon and polypropylene with PTFE seals and features a stainless steel plunger rod. Ready-to-go self-priming pump makes these units quick and easy-to-use. Suitable for use with cellulose thinners, antifreeze, AdBlue®, brake cleaner, detergents, mild acids and gun wash. Universal adaptor (Model No. TP99/1) is available for drums fitted with a plastic pouring spout, see **J**.

Model No:	Drum Suitability:	Delivery:
TP99	25L	400ml/stroke
TP99/205	205L	400ml/stroke
Universal Drum Closure Adaptor (Optional):		TP99/1

J Universal Drum Closure Adaptor
Model No. **TP99/1**

Allows fitting of Model No. TP99 and similar thinners pumps to drums that are fitted with a pouring spout.

A

14L



A 14L Oil Dispensing Unit
Model No. TP16

Self-priming lever pump manufactured from galvanized steel, with a 14L reservoir. Features carry handle for ease of manoeuvrability and foot plate for stability while in use. 1.8m Delivery hose with angled spout. Drip opening/spout storage within bucket cover for tidy storage when not in use. Suitable for oils up to SAE 40 viscosity.

Capacity: 14L

B

20L



B 20L Mobile Gear Oil Dispensing Unit
Model No. TP17

Steel construction self-priming lever pump. Fitted with heavy-duty wheels and gripped handle for ease of manoeuvrability. Features a 20L reservoir, 1.9m delivery hose and flow control tap with angled spout. Spout holder within bucket cover for tidy storage when not in use. Suitable for gear oil and fluids with similar viscosity.

Capacity: 20L

C

10.5L



C 10.5L Gear Oil Dispensing Unit
Model No. TP70

Fabricated steel container with powder coated finish and spring-cap lid. Rotary type pump with clear, plastic tube delivers and retrieves oils and fluids. Fitted with rigid extension and hanging peg. Suitable for gear oil and fluids with similar viscosity.

Capacity: 10.5L



D

E

Model No. TP67DT



F



D Gear Oil Pump
Model No. TP67

Model No. TP67/X

Self-priming pump with polypropylene body. Suitable for pumping gear oil or other products with a similar viscosity. Includes 1.5m of hose and universal adaptor.

Note: If the container you have will not accept direct mounting of Model No. TP67, order **E** Model No. TP67DT Trolley and **F** Model No. TP67/X Top Plate. The pump fixes to the top plate which in turn mounts onto the trolley and avoids the need to connect the pump directly to the container.

G

5L



G 5L Transmission Oil Filling System
Model No. VS70096

Pump operated oil dispensing unit. Ideal for filling manual transmissions and differentials. Supplied with 100° hooked metal and flexible adaptors. Features a fluid shut-off valve to prevent accidental spillage. Includes pressure gauge.

Capacity: 5L
Maximum Pressure: 15psi(1bar)
Hose Length: 1.5m

H

7L



H 7L Transmission & Engine Oil Filling System
Model No. VS7009

Manually operated oil dispensing unit manufactured from composite materials. Large visual measurement will identify amount dispensed. Supplied with a range of five automatic transmission fluid adaptors. Delivers approximately 70ml per stroke. Features a fluid control valve and adaptor stowage to minimise oil leakage when not in use.

Capacity: 7L
Hose Length: 1.5m



A 350ml Oil Inspection Syringe
Model No. VS407

Multipurpose syringe with Viton® seal, ideal for the transfer of oils/fluids to and from vehicle components such as gearboxes and differentials. Translucent body allows easy inspection of oils and fluids.

Fluid Compatibility: AdBlue®, Antifreeze, Brake Fluid, Diesel, Oil, Water

Capacity: 350ml



B 500ml Oil Suction Syringe
Model No. AK47

Single action plastic bodied suction tube with T-bar type plunger. Ideal for use on vehicles and machinery for removing oil from gearboxes and differentials. Supplied with 300mm transparent flexible suction hose with Ø10mm bore.

Capacity: 500ml



C 550ml Oil Suction Syringe
Model No. AK54

Single action plastic bodied suction tube with T-bar type plunger. Ideal for use on vehicles and machinery for removing oil from gearboxes and differentials. Translucent body allows easy inspection of oils and fluids. Supplied with 300mm transparent flexible suction hose with Ø10mm bore.

Capacity: 550ml



D 500ml Oil Suction Syringe - Metal Body
Model No. AK46

Painted cast steel suction tube with T-Bar type plunger. Particularly useful for removal of oil from gearboxes and differentials. Supplied with 300mm flexible suction hose.

Capacity: 500ml



E 200ml Oil & Brake Fluid Inspection Syringe
Model No. VS404

Multipurpose syringe with Viton® seal, ideal for the transfer of oils/fluids to and from vehicle components such as brake master cylinders, oil filter housings, power steering reservoirs, differentials and gearboxes. Translucent body allows easy inspection of oils and fluids.

Capacity: 200ml



F 1.5L Oil Inspection Syringe
Model No. VS405

Multipurpose syringe with Viton® seal, ideal for the transfer of oils/fluids to and from vehicle components such as brake master cylinders, oil filter housings, power steering reservoirs, differentials and gearboxes. Translucent body allows easy inspection of contents.

Capacity: 1.5L



G 3pc Fluid Transfer Syringe Set
Model No. VS408

Three multipurpose syringes with Viton® seals, ideal for the transfer of oils/fluids to and from vehicle components such as gearboxes and differentials. Set contains two suction syringes with collection bottles and a traditional suction/pump syringe with fluid shut-off valve. Translucent bodies allow easy inspection of oils and fluids. Accessories include a wall mounting board with colour-coded brackets and syringe clips to distinguish fluid usage.

Fluid Compatibility: AdBlue®, Antifreeze, Brake Fluid, Diesel, Oil, Water

Collection Bottle Capacity: 1L

Syringe Capacity: 350ml

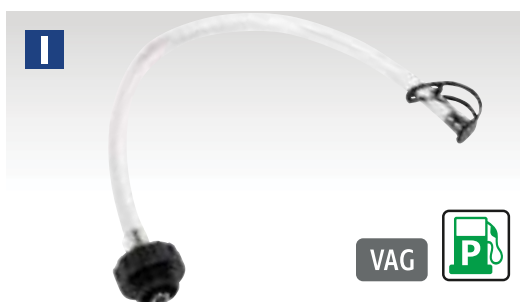


H 550ml Fluid Transfer/Inspection Syringe
Model No. VS558

Capacity: 550ml

Multipurpose syringe with Viton® seals, ideal for the transfer of oils/fluids to and from vehicle components such as gearboxes and differentials. Translucent body allows easy inspection of contents. Dual feature allowing fluid to be extracted on pull stroke and expelled on push stroke, for fluent transfer of fluid.

Fluid Compatibility: AdBlue®, Antifreeze, Brake Fluid, Diesel, Oil, Water



I Oil Filter Drain Tube - VAG FSi
Model No. VS7010

Designed to attach to the oil filter housing on VAG FSi petrol engines. Allows the filter housing to be drained before removal, preventing spillage. Use in conjunction with a suitable oil drainer.

Tube Length: 500mm



J Oil Filter Drain Tube & Bottle - VAG FSi
Model No. VS7110

Designed to attach to the oil filter housing on VAG FSi petrol engines. Allows the filter housing to be drained before removal, preventing spillage. Features a control valve fitted to the bottle and hanging chain.

Capacity: 1L



A 500ml Metal Oil Can with Flexible Spout
Model No. TP05

Metal can with flexible spout and thumb operated lever action.

Capacity: 500ml



B 1000ml Metal Oil Can with Flexible Spout
Model No. TP1000

Metal can with flexible spout and thumb operated lever action.

Capacity: 1000ml



C 180ml Oil Can
Model No. TP04

Metal can with flexible spout for directional control. Trigger operated action for high pressure oil spray.

Capacity: 180ml



D Spill Absorbent Pads - Pack of 100
Model No. SAP01

Fast acting, high retention spill absorbent pads ideal for absorbing a variety of fluids including oil, fuel, coolants, solvents and water. Manufactured from 100% high grade polypropylene with a double weight cover stock on one side for maximum absorbency and resistance. Each pad absorbs up to 1L of fluid.

Size: 500 x 400mm

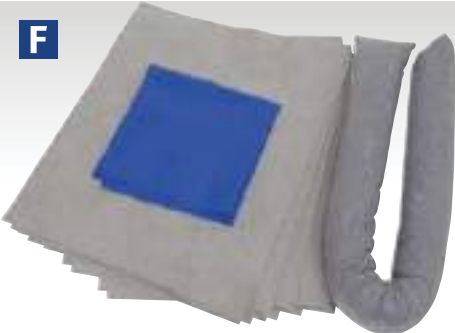


E Spill Absorbent Socks - Pack of 10
Model No. SAS10

High retention spill absorbent socks ideal for absorbing a variety of fluids including oil, fuel, coolants, solvents and water. These specially designed absorbent socks can be used as barriers during a spill and are ideal for stopping initial spills from spreading, retaining their strength even when wet. Can be placed easily around the bottom of machines or into gaps and runners to absorb and catch leaks. Manufactured with extra thick skin for improved absorbency. Each sock absorbs up to 5L of fluid.

Size: 80mm x 1.2m

Pack Quantity: 10



F - H Spill Control Kits
Model No. SEE BELOW

Absorbs up to 15L



Absorbs up to 30L



Absorbs up to 50L

These spill kits have been designed to be a highly mobile solution when responding to spills and leaks as well as assisting companies in complying with current pollution prevention guidelines and other regulations. Suitable for use with oil, petrol, diesel, coolants, mild solvents, water and other spills. A full list of absorbent applications is provided in each kit. Supplied in a resealable storage bag with a range of high quality absorbents, including high-grade polypropylene pads that can absorb up to 1L of fluid and featuring a double weight cover stock for maximum absorbency. Also supplied with 1.2m absorbent socks specially designed to absorb up to 5L of fluid and create barriers to keep spills from spreading.

Model No:	Capacity:	Contents:	Sizes:
F SCK15	15L	Pad (x10), Sock (x1), Disposal Bag with Ties (x1)	Pad; 500 x 400mm, Sock; 80mm x 1.2m
G SCK30	30L	Pad (x15), Sock (x3), Disposal Bag with Ties (x1)	Pad; 500 x 400mm, Sock; 80mm x 1.2m
H SCK50	50L	Pad (x25), Sock (x5), Disposal Bag with Ties (x1)	Pad; 500 x 400mm, Sock; 80mm x 1.2m



A Air Operated Oil Dispensing Pump Station
Model No. AK4560D

Air operated 3:1 double acting pump for barrels or tanks with 2"BSP fittings. Pump is supplied with air management system and connected to a 940mm rigid suction probe with non-return valve. Features hose for attachment to digital oil meter (Model No. AK4565D supplied) or to optional retractable hose reel (Model No. AK4567D see page 655). Suitable for use with engine, hydraulic, synthetic, gear and transmission oils up to SAE150.

Pump Ratio:	3:1
Maximum Flow Rate:	12L/min
Maximum Viscosity:	SAE150
Maximum Output Pressure:	350psi
Maximum Air Pressure:	115psi
Recommended Air Pressure:	70psi
Outlet Size:	1/2"BSP



B Air Operated Oil Dispensing System
Model No. AK4563D

Mobile oil dispensing unit with air operated 3:1 double acting pump for gear oil with 2"BSP fittings. Pump is supplied with air management system and connected to a 730mm rigid suction probe with non-return valve. Features 4m hose and digital oil meter (Model No. AK4565D supplied). Also suitable for use with engine, hydraulic, synthetic, gear and transmission oils up to SAE150 in containers up to 50kg.

Pump Ratio:	3:1
Maximum Flow Rate:	12L/min
Maximum Viscosity:	SAE150
Maximum Output Pressure:	350psi
Maximum Air Pressure:	115psi
Recommended Air Pressure:	70psi
Outlet Size:	1/2"BSP
Maximum Trolley Capacity:	50kg



C Air Operated Oil Dispensing System
Model No. AK4561D

Mobile oil dispensing unit with air operated 3:1 double acting pump for barrel or tanks with 2"BSP fittings. Pump is supplied with air management system and connected to a 940mm rigid suction probe with non-return valve. Features trolley, 4m hose and digital oil meter (Model No. AK4565D supplied). Suitable for use with 205L drums and with engine, hydraulic, synthetic, gear and transmission oils up to SAE150.

Pump Ratio:	3:1
Maximum Flow Rate:	12L/min
Maximum Viscosity:	SAE150
Maximum Output Pressure:	350psi
Maximum Air Pressure:	115psi
Recommended Air Pressure:	70psi
Outlet Size:	1/2"BSP
Maximum Trolley Capacity:	220kg

D Air Operated Oil Dispensing System with
10m Retractable Hose Reel
Model No. AK4562D

Mobile oil dispensing unit with air operated 3:1 double acting pump for barrels or tanks with 2"BSP fittings. Pump is supplied with air management system connected to a 940mm rigid suction probe with non-return valve. Features trolley, 10m retractable hose reel (Model No. AK4567D supplied) and digital oil meter (Model No. AK4565D supplied). Suitable for use with 205L drums and engine, hydraulic, synthetic, gear and transmission oils up to SAE150.

Pump Ratio:	3:1
Maximum Flow Rate:	12L/min
Maximum Viscosity:	SAE150
Maximum Output Pressure:	350psi
Maximum Air Pressure:	115psi
Recommended Air Pressure:	70psi
Outlet Size:	1/2"BSP
Maximum Trolley Capacity:	220kg



Offers a high degree of protection against a variety of chemicals. See page 1247 for full details.





A 10m Retractable Oil Hose Reel
Model No. AK4567D

For use with Model No. AK4560D or any pump station. Heavy-duty steel and powder coat finish for corrosion resistance. Four roller fairlead allows smooth running of hose whatever the angle of hose or mounting position of reel. Multi-position ratchet lock with fully enclosed spring. Includes 1.5m connection hose for connecting reel to pump.

Hose Length:	10m
Hose Inlet/Outlet:	1/2"BSP
Maximum Pressure:	2000psi
Hose Size (ID):	Ø1/2"



B Oil Hose End Gun with Digital Meter
Model No. AK4565D

Robust oil dispensing gun incorporating digital meter, manual shut-off and tough rubber protection guard. Fitted with flexible extension and non-drip nozzle. Easy-to-read 5-digit LCD display with resettable individual or cumulative totals.

Please note that this gun is not approved for the resale of oil.

Maximum Flow Rate:	35L/min
Accuracy:	±0.5%
Inlet Size:	1/2"BSP



C Oil Hose End Gun
Model No. AK4564D

Robust oil dispensing gun incorporating manual shut off. Fitted with rigid extension, handle lock and non-drip nozzle.

Please note that this gun is not approved for the resale of oil.

Maximum Flow Rate:	35L/min
Inlet Size:	1/2"BSP



D 12V Oil Transfer Pump
Model No. TP9312

Robust and compact portable pump ideal for extracting engine oil or diesel. Powered from a 12V battery. Supplied with a 1.2m suction hose, 2m discharge hose and a 1.7m battery cable with clips. Not suitable for use with Petrol.



E Emergency Fuel Transfer Pump
Model No. EC96

Syphon action drainer with starter bulb and one-way valve.

Length:	2m
----------------	----



F Emergency Fuel Transfer Pump
Model No. EC97

Easy-to-use compact syphon pump with self-priming feature, suitable for low viscosity oils and non-aggressive chemicals.

Length:	1.7m
----------------	------



G 53L Gravity Fed Mobile Dispensing Tank
Model No. DT53

Manufactured from high-density polyethylene. 53L Capacity suitable for the distribution of Diesel, Oil and Water. Fitted with two roller wheels, hose holder and vent valve. Gravity fed system features a 3m delivery hose and manual dispensing nozzle. Ideal for refilling on site equipment used in locations such as agricultural, boatyards and marinas. Not suitable for petrol.

Maximum Flow Rate:	8L/min
Weight:	8.25kg



Diesel

53L

Gravity Feed



A - C 55L Portable Dispensing Tanks
Model No. SEE RIGHT

Manufactured from hard-wearing and durable polyethylene. 55L Capacity suitable for the distribution of diesel, oil, AdBlue®, water and antifreeze. Available in three configurations and colours, Model No. DT55RCOMBO1 (Red) is supplied with Model No. TP55 Oil Rotary Pump, DT55BCOMBO1 (Blue) is supplied with Model No. TP6607 AdBlue® Lever Pump and DT55GCOMBO1 (Grey) is supplied with Model No. TP96 12V Diesel Pump Kit. Units are fitted with two roller wheels, hose holder and vent caps. Each tank features a 2" BSP thread and four point screw fittings enabling other pumps to be fitted as required.

Model No:	Application:	Colour:
A DT55RCOMBO1	Oil	Red
B DT55BCOMBO1	AdBlue®	Blue
C DT55GCOMBO1	Diesel	Grey



D 100L Portable AdBlue® Tank 12V
Model No. ADB100T

Manufactured from HDPE for the safe transportation and dispensing of AdBlue® when supplying on site equipment. Supplied with a 12V electric pump, 4m electric cable and clamps, security valve and a 4m delivery hose with automatic fuel nozzle. Can be safely secured and transported on an ATV, pick-up truck or van, using grooves for tie down straps. Not suitable for petrol or diesel.

Capacity:	100L
Power:	180W
Voltage:	12V
Current:	15A
Flow Rate:	20L/min
Size (W x D x H):	900 x 500 x 480mm



E 100L Portable Diesel Tank 12V
Model No. D100T

Manufactured from HDPE for the safe transportation and dispensing of diesel fuel when supplying on site equipment. Complies to ADR 1.1.3.1.C for exemption from requirements of ADR regulations. Supplied with a 12V electric pump, 4m electric cable and clamps, security valve and a 4m delivery hose with fuel nozzle. Can be safely secured and transported on an ATV, pick-up truck or van, using grooves for tie down straps. Not suitable for petrol.

Capacity:	100L
Power:	180W
Voltage:	12V
Current:	15A
Flow Rate:	20L/min
Size (W x D x H):	900 x 500 x 480mm


A - B Portable Diesel Tanks 12V

 Model No. **SEE BELOW**

Manufactured from HDPE for the safe transportation and dispensing of diesel fuel when refilling on site equipment. Complies to ADR 1.1.3.1.C for exemption from requirements of ADR regulations. Supplied with a 12V electric pump, 4m electric cable and clamps, and a 4m delivery hose with automatic fuel nozzle. Can be safely secured and transported on a pick-up truck or van, using grooves for tie down straps and six handles for positioning. Supplied with lockable cover. Not suitable for petrol.

	A	B
Model No:	D200T	D400T
Capacity:	200L	400L
Power:	180W	180W
Voltage:	12V	12V
Current:	15A	15A
Flow Rate:	20L/min	20L/min
Size (W x D x H):	1100 x 800 x 470mm	1100 x 800 x 720mm


C 200L Portable AdBlue® Tank 12V

 Model No. **ADB200T**

Manufactured from HDPE for the safe transportation and dispensing of AdBlue® when refilling on site equipment. Supplied with a 12V electric pump, 4m electric cable and clamps, and a 4m delivery hose with automatic fuel nozzle. Can be safely secured and transported on an ATV, pick-up truck or van, using grooves for tie down straps and six handles for positioning. Not suitable for petrol or diesel.

Capacity:	200L
Power:	180W
Voltage:	12V
Current:	15A
Flow Rate:	20L/min
Size (W x D x H):	1100 x 800 x 470mm


D 400L/50L Portable Combi Fuel Tank 12V

 Model No. **D440T**

Manufactured from hard-wearing and durable polyethylene. Main 400L capacity tank suitable for diesel, supplied with a 12V, 40L/min pump kit and automatic shut-off nozzle. A removable 50L tank for AdBlue®, supplied with a 12V, 17L/min pump kit and manual nozzle. Includes 2 x 4m delivery hoses, 2 x dispenser nozzle holders, 2 x 4m of cable and clamps to connect to a battery. Covered by a lockable lid.

Capacity:	Diesel 400L/AdBlue® 50L
Current:	Diesel Pump: 15A, AdBlue Pump: 6A
Flow Rate:	Diesel: 40L/min, AdBlue®: 17L/min
Power:	Diesel: 180W, AdBlue®: 120W
Size (W x D x H):	1150 x 800 x 860mm

A

12V

230V



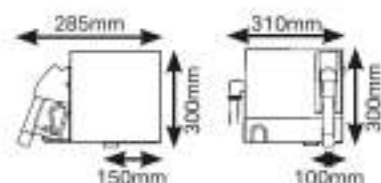
A 205L 12V & 230V Electric Drum Pump Model No. TP6818

Electric drum mounted pump designed for pumping diesel, AdBlue®, antifreeze, detergents, water and light oils up to a viscosity of 100cst. Fitted with built-in fuse for protection, with a silenced motor keeping noise to a minimum. Telescopic suction tube features a stainless steel filter at the base of the tube, preventing foreign matter from entering the motor. Pump housing features a convenient holder for storing the dispensing nozzle. Includes 230V mains adaptor and 12V battery clips allowing user to operate unit with whichever supply is available. Supplied with a 2" BSP adaptor, 2m hose and manual dispensing nozzle with spout.

Voltage:	12/230V
Current:	3A
Power:	16.8W
Duty Cycle:	30min/hr
Flow Rate:	16L/min
Fuse:	5A

B

230V



B Wall Mounting Diesel/Fluid Transfer System with Meter Model No. TP955

Self-priming, rotary vane pump with bypass valve. Direct drive 230V motor fitted with overload protector. Volumetric, rotating disc, resettable meter with large 3-digit display. Supplied with Model No. TP109 Automatic Delivery Nozzle and 4m of reinforced 3/4" hose. Unit is suitable for wall, tank or pedestal installation. Flow rate 58L/min.

Voltage:	230V
Speed:	2900rpm
Current:	3A
Power:	350W
Flow Rate:	58L/min
Pressure:	29psi(2bar)
Protection:	IP55

C

12V

24V



C Portable Diesel/Fluid Transfer Pumps Model No. SEE BELOW

Electric transfer pump kit with battery clips, available in 12 or 24V versions. Pumps housed in a die-cast aluminium casing. Suitable for filling diesel vehicles in the field. Self-priming units deliver up to 46L a minute of fluid. Supplied with 4m of hose and manual delivery nozzle. Includes on/off switch, carry handle, four hose clamps, three hose tails, mounting plate, PTFE tape and suction hose filter. Features in-line fuse with two replacement fuses supplied.

Model No:	TP96	TP9624
Voltage:	12V	24V
Speed:	2600rpm	2600rpm
Current:	18A	11A
Power:	190W	220W
Duty Cycle:	30min/hr	30min/hr
Flow Rate:	46L/min	46L/min

D

12V

24V



High Flow

D High Volume Diesel & Fluid Transfer Pumps Model No. SEE BELOW

Electric 12 or 24V pump kit with battery clips. High flow pump units with bypass valve, suitable for filling diesel vehicles in the field. Cast iron pump body with anti-corrosion finish. Includes on/off switch, delivery hose with manual delivery nozzle and filter.

Model No:	TP98	TP9824
Voltage:	12V	24V
Speed:	2000rpm	2000rpm
Current:	35A	18A
Power:	240W	240W
Duty Cycle:	30min/hr	30min/hr
Flow Rate:	85L/min	85L/min



A Automatic Shut-Off Delivery Nozzle
Model No. TP109

Robust, die-cast, aluminium body with rubberised protective cover. Suitable for use with diesel and unleaded petrol dispensed using a pumped system. Automatic, micro-touch valve for instant shut-off when tank is full. Supplied with 3-stage trigger lock. Suitable as replacement nozzle for Model No. TP955 Diesel/Fluid Transfer System. Not suitable for gravity dispensing.

Maximum Flow Rate:	60L/min
Nozzle Outside Diameter:	Ø21mm
Inlet Size:	1" BSP



B Manual Dispenser Nozzle
Model No. TP108

Die-cast aluminium body and trigger assembly. Delivery nozzle suitable for use with diesel and leaded petrol. Supplied with swivel connector. Suitable as replacement nozzle for Model No's TP9624 and TP963 Diesel/Fluid Transfer Pumps.

Maximum Flow Rate:	75L/min
Nozzle Outside Diameter:	Ø25mm
Inlet Size:	1" BSP



D Gravity Dispensing Kit
Model No. TP963

3m Delivery hose with 1" male brass connectors. Supplied with 1" male and female lockable, brass, angle valve and Model No. TP108 delivery nozzle.



F Diesel & Fluid Flow Meter
Model No. TP956

Volumetric nutating disc meter with 3-digit resettable batch display and 6-digit cumulative total display. Unique filter and flange assembly allows meter to be positioned in four configurations.

Flow Rate:	20-120L/min
------------	-------------



G Digital Diesel & Fluid Flow Meter
Model No. TP101

Robust rubber housing with integral digital electronic metering. Easy-to-read large, 4-digit, 28mm high LCD display calibrated in litres, quarts, pints and gallons. Features flow rate indication. 1" x 1" BSP Male/Female fittings. Powered by 2 x AAA batteries (supplied). IP65 Rated protection.

Flow Rate:	7-120L/min
------------	------------



C Transfer Pump Filter
Model No. TPF01

High flow fuel filter with 10 micron fuel filter element. Ideal for filtering out unwanted contaminants from fuel including small particles of rust, scale, grit and dirt. Can be installed on both mobile and stationary fuel pump systems. Features 1" BSP inlet and outlet threads. Fitted with brass drain cock for releasing unwanted contaminants.

Replacement Filter Element:	TPF01.F
-----------------------------	---------



E Low Voltage Submersible Transfer Pumps
Model No. SEE BELOW

Robust and compact portable pumps for use with diesel, non-aggressive chemicals and clean or dirty water. Suitable for re-fuelling/fluid transfer of plant, agricultural and marine equipment on site. The pump is supplied with a 3m outlet hose and stainless steel nozzle plus a 4m battery cable with clips. Will fit through a Ø54mm aperture to allow emptying of containers. End cap can be unscrewed for periodic cleaning of the filter.

Model No:	TP94	TP9424
Voltage:	12V	24V
Current:	4.5A	3.5A
Duty Cycle:	15min/hr	15min/hr
Flow Rate:	16.5L/min	15L/min





A 1L 2-Stroke Petrol/Fuel Mixing Bottle
Model No. **JMIX01**

1L Mixing bottle for accurately mixing fuel and oil ratios for 2-stroke engines. Markings at 25:1, 32:1, 40:1 and 50:1, enabling the user to easily identify the correct mixture for their engine.

Capacity:	1L
Ratio:	25:1, 32:1, 40:1, 50:1



B 500ml Mixture Measuring Jug
Model No. **JM500**

Translucent measuring jug with 500ml capacity. Easy-to-read scale in litres, millilitres and mixture percentage levels. Accurate to $\pm 1\%$.

Capacity:	0.5L
-----------	------



C Measuring Jugs
Model No. **SEE BELOW**

Opaque, low density polythene measuring jugs with easy-to-read scales for accurate measurement ($\pm 1\%$).

Model No:	Capacity:
J1E	1L
J5E	5L



D Measuring Jugs
Model No. **SEE BELOW**

Heavy-duty ergonomic design with easy-to-read scale and large base for added stability. Manufactured from hard-wearing polyethylene, resistant to oil, fuel and most acids. Fixed straight spout. Scale for indication purposes only.

Model No:	Capacity:
J1RS	1.5L
J5RS	5L



E Translucent Measuring Jugs
Model No. **SEE BELOW**

A range of five translucent polypropylene measuring jugs with easy-to-read scales for accurate measurement ($\pm 1\%$).

Model No:	Capacity:
JT0250	0.25L
JT0500	0.5L
JT1000	1L
JT2000	2L
JT5000	5L



F - G Measuring Jugs with Rigid Spout
Model No. **SEE BELOW**

Robust and stable ergonomic design. Manufactured from hard-wearing polyethylene, resistant to oil, fuel and most acids. Fixed straight spout. Scales on these jugs are for indication purposes only.

Model No:	Capacity:
F J1	1L
G J5	5L



H - J Oil Containers with Lid & Flexible Spout
Model No. **SEE BELOW**

Polyethylene jugs resistant to oil and similar viscosity fluids. Removable flexible spout. Screw cap and lid enables jug to be used as a container, to ensure safer handling of liquid, preventing spillages. Scales on these jugs are for indication purposes only.

Model No:	Capacity:
H JDL1	1L
I JDL2	2L
J JDL5	5L



K - L Measuring Jugs with Flexible Spout
Model No. **SEE BELOW**

Robust and stable ergonomic design. Manufactured from hard-wearing polyethylene which is resistant to oil, fuel and most acids. Removable flexible spout. Scales on these jugs are for indication purposes only.

Model No:	Capacity:
K J2F	2L
L J5F	5L



A - E Oil Containers with Lid & Flexible Spout
Model No. SEE BELOW

Polyethylene jugs resistant to oil and similar viscosity fluids. Removable flexible spout. Screw cap and lid enables jug to be used as a container, to ensure safer handling of liquid, preventing spillages. Scales on these jugs are for indication purposes only and are not intended for 100% accuracy.

Model No:	Capacity:	Lid Colour:
A JDL5	5L	Black
B JDL5R	5L	Red
C JDL5B	5L	Blue
D JDL5G	5L	Green
E JDL5L	5L	Lime

A - E 5L Oil Containers with Lid & Flexible Spouts - Set of 5
Model No. JDL5SET

Package includes:

Model No:	Description:
JDL5	5L Oil Container with Black Lid & Flexible Spout
JDL5R	5L Oil Container with Red Lid & Flexible Spout
JDL5B	5L Oil Container with Blue Lid & Flexible Spout
JDL5G	5L Oil Container with Green Lid & Flexible Spout
JDL5L	5L Oil Container with Lime Lid & Flexible Spout



F - G Metal Measuring Jugs with Flexible Spout
Model No. SEE BELOW

Wide mouthed tin-plated jugs with flexible metal spout. Handle for safe and easy pouring.

Model No:	Capacity:
F JM1F	1L
G JM2F	2L



H 5L Measuring Jug with Flexible Spout
Model No. VS563

Transparent measuring jug with removable flexible spout. Wide base for extra stability.

Capacity:	5L
-----------	----



I 5L Measuring Jug
Model No. VS562

Transparent measuring jug with wide base for extra stability.

Capacity:	5L
-----------	----

J Engine Oil Funnel - BMW, Mercedes, Toyota/Lexus, VAG
Model No. VS7100

Fastens and seals into the engine filler. Hands-free operation with no mess or spills.

Applications:	BMW, Mercedes, Toyota/Lexus, VAG
---------------	----------------------------------

K 4pc Engine Oil Funnel - BMW, Fiat, Ford, Mazda, Mercedes, Toyota/Lexus, VAG
Model No. VS7101

Fastens and seals into the engine filler with four manufacturer specific adaptors. Covering a large proportion of modern vehicles including the VAG range, Fiat 500 0.9L MultiAir and Fiesta 1.0L EcoBoost. Hands-free operation with no mess or spills. See instructions on Sealey website for complete list of vehicle applications.

Adaptor 1:	Ø37 x 3mm Pitch, Threaded
Adaptor 2:	Bayonet, 9mm Lugs
Adaptor 3:	Ø33.5mm, Twist Fitting
Adaptor 4:	Ø33 x 3.5mm Pitch, Threaded





A - D Metal Funnels with Filter
Model No. [SEE BELOW](#)

Manufactured from tin-plate with polyethylene spout. Removable brass filter. High rim acts as splash guard. Handle for safe and easy pouring. Suitable for industrial and workshop use. Model No's FM16F & FM20F feature fixed and flexible spouts.

Model No:	Spout Type:	Diameter:
A FM16	Fixed	Ø160mm
B FM20	Fixed	Ø200mm
C FM16F	Flexible/ Fixed	Ø160mm
D FM20F	Flexible/ Fixed	Ø200mm



E - F Funnels with Filter & Closing Lid
Model No. [SEE BELOW](#)

Heavy-duty polyethylene funnels resistant to oil, fuel and some acids. Model No. F99240 supplied with 2"BSP drum adaptor for direct fitting to 205L drum. Features contoured body for easy handling, dust cover and flexible spout. Fitted with integral wire mesh filter to keep contaminants out. Manufactured with splash-proof curved funnel opening.

Model No:	2"BSP Fitting:	Diameter:
E F99200	✗	Ø200mm
F F99240	✓	Ø240mm



G Ø240mm Funnel with Closing Lid
Model No. [F99/220](#)

Polyethylene funnel resistant to oil, fuel and some acids. Features integral mesh filter, flexible spout and contoured handles for easy handling.

Diameter:	Ø240mm
-----------	--------



H Ø160mm Valved Funnel with Flexible Spout & Filter
Model No. [VFF1](#)

Heavy-duty polyethylene funnel resistant to oil, fuel and some acids. Features lockable valve nozzle and integral wire mesh filter to keep contaminants out. Supplied with flexible spout with end cap. Fitted with handle for safe and easy pouring.

Diameter:	Ø160mm
-----------	--------



I Ø160mm Funnel with Flexible Spout & Filter
Model No. [F6](#)

Polyethylene funnel resistant to oil, fuel and some acids. Features a removable flexible spout and side handle. Supplied with internal mesh filter.

Diameter:	Ø160mm
-----------	--------



J Ø160mm Funnel with Fixed Offset Spout & Filter
Model No. [F16](#)

Polyethylene funnel resistant to oil, fuel and some acids. Fitted with offset rigid spout. Ideal for vehicles with smaller diameter unleaded filler necks. Fitted with handle and removable brass filter.

Diameter:	Ø160mm
-----------	--------



K Ø160mm Funnel with Flexible Spout & Filter
Model No. [F16F](#)

Polyethylene funnel resistant to oil, fuel and some acids. Removable 2-step flexible spout. Ideal for vehicles with smaller diameter unleaded filler necks. Fitted with handle and removable brass filter.

Diameter:	Ø160mm
-----------	--------



L Ø200mm Funnel with Flexible Spout & Filter
Model No. [F2F](#)

Polyethylene funnel resistant to oil, fuel and some acids. Removable 2-step flexible spout. Grip tab with integral hanging eye. Ideal for vehicles with smaller diameter unleaded filler necks. Fitted with handle and removable brass filter.

Diameter:	Ø200mm
-----------	--------



A-B Economy Fixed Spout Funnels
Model No. **SEE BELOW**

Polyethylene funnels suitable for changing oil, antifreeze and windscreen wash. Rigid straight spout with ventilation tube. Grip tab with integral hanging eye. This economy range is available in two sizes. Not suitable for acetone, gun wash, thinners or petrol.

Model No:	Diameter:
A F1E	Ø115mm
B F2E	Ø190mm



C 4pc Economy Fixed Spout Funnel Set
Model No. **F94**

Polyethylene funnel set suitable for many fluids including oil, antifreeze and windscreen wash. Set comprises Ø77mm, Ø96mm, Ø113mm and Ø138mm funnels with hanging tabs. Not suitable for acetone, gun wash, thinners or petrol.

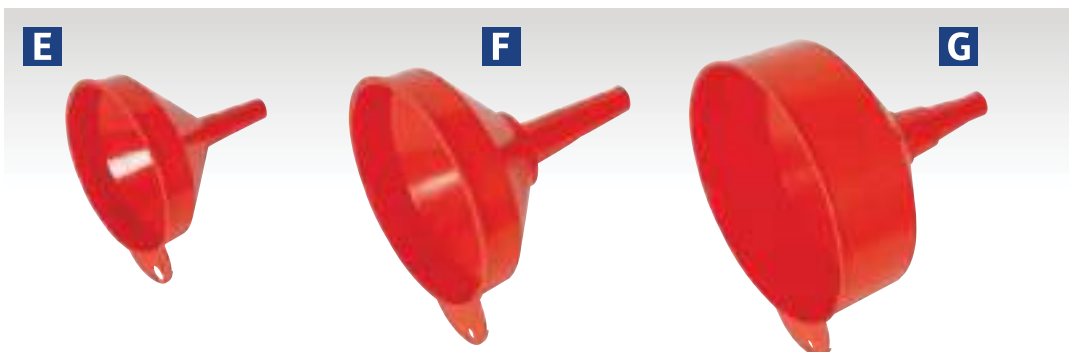
Diameters:	Ø77, 96, 113, 138mm
-------------------	---------------------



D 3pc Fixed Spout Funnel Set
Model No. **F98**

Polyethylene funnel set suitable for many fluids including detergents, pesticides, diesel and petrol. Set comprises Ø75mm, Ø150mm and Ø250mm funnels with hanging tabs. Not suitable for acetone, gun wash or thinners.

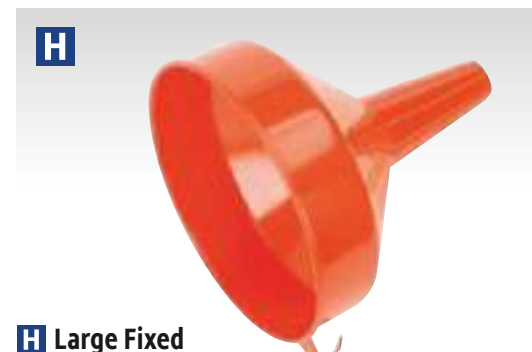
Diameters:	Ø75, 150, 250mm
-------------------	-----------------



E-G Fixed Spout Funnels
Model No. **SEE BELOW**

Polyethylene funnels resistant to oil, fuel and some acids. Rigid straight spout with ventilation tube. Grip tab with integral hanging eye. Model No's F2 and F3 include filter.

Model No:	Diameter:
E F1	Ø120mm
F F2	Ø200mm
G F3	Ø250mm



H Large Fixed Spout Funnels
Model No. **SEE BELOW**

Polyethylene funnels resistant to oil, fuel and some acids. Features a rigid straight spout and an integral side hook for hanging.

Model No:	Diameter:
F4	Ø185mm
F5	Ø250mm



I 2pc Universal Oil Funnel
Model No. **UOF2**

Specially designed funnel with a clamp that allows the user to pour using both hands and that can adjust to different pipe widths. With a transparent, lower chamber to watch the flow of fluid. Funnel diameter Ø124mm. Will fit pipes 22mm to 72mm wide.

Diameter:	Ø124mm
------------------	--------



J Oil Funnel
Model No. **OIL1F**

Square design and tapered spout fits into most engine filling holes. Manufactured from durable polypropylene material. Rectangular aperture (180 x 100 x 145mm) to accommodate up-ended containers.



K Tractor Funnel with Water Separating Filter
Model No. **OIL/TF**

Heavy-duty funnel manufactured from high-density polyethylene. 255 x 165mm Aperture to accommodate up-ended containers. Supplied with water separating filter. Tapered spout with venting ribs.



A **NEW**

A 10pc Funnel Combo
Model No. F10COMBO
You may also refer to the individual Model No's for full specification.

- Contents:**
F94 - 4pc Economy Fixed Spout Funnel Set
F12S - Clip-On Funnel with Spout (x2)
OIL1F - Oil Funnel
F6 - Ø160mm Flexible Spout Funnel with Filter
VFF1 - Ø160mm Flexible Spout Valved Funnel with Filter
F99200 - Ø200mm Funnel with Closing Lid



B

B Clip-On Funnels with Spout
Model No. SEE BELOW

Suitable for use with detergent, antifreeze, coolants, oil, petrol and diesel. Funnel clips on bottle necks of most bottles to prevent spills using a Ø25-60mm diameter opening. Supplied with 170mm flexible hose.

Model:	F12S	F12
Diameter:	Ø25-60mm	Ø25-60mm
Quantity	Single	Display Box of 12



NEW
2L

C 2L Measuring Funnel with Lid and Base
Model No. MF2/BC

A jug and funnel built into one. Graduations that can be used for transferring a measured quantity of fluid without any spills or splashes. Simple press of a lever dispenses liquid through a built-in metal sieve to ensure contaminant free transfer. Replace funnel back into base in between use, no need to pour unwanted liquids back into original storage container. Recommended for use with oils and other similar viscosity liquids. Do not use with water based media.

Capacity: 2L



D-F Water Containers
Model No. SEE BELOW

Plastic water containers with screw cap and inner sealing plug. Model No's WC20 and WC30 feature spout and provision for air vent for smooth pouring.

	D	E	F
Model No:	WC10	WC20	WC30
Capacity:	10L	20L	30L



G-I Fluid Containers with Tap
Model No. SEE BELOW

Professional quality fluid containers. Manufactured from heavy-duty thick walled polyethylene making these containers highly resilient to general wear. Features ergonomically designed body and handle for added stability and control. Fitted with screw cap and swivel tap for easy fluid control.

	G	H	I
Model No:	WC10T	WC20T	WC35T
Capacity:	10L	20L	35L



A Ø1/2" ID Hose Jiggle Syphon
Model No. EC94

Syphon type drainer with jiggle action. Simply move hose up and down in vertical position to start flow. Supplied with a Ø1/2" ID 1.75m petrol hose.

Length: 1.75m



B Ø3/4" ID Hose Jiggle Syphon
Model No. EC9434

Syphon type drainer with jiggle action. Simply move hose up and down in vertical position to start flow. Supplied with a Ø3/4" ID 2m long petrol hose.

Length: 2m



C Ø22mm x 3.14m Syphon Pump
Model No. VS565

Long reach syphon for efficient transfer of fluids. Suitable for low viscosity oils and non-aggressive chemicals. Ø22mm hose for increased flow rate.

Length: 3.14m



D Emergency Fuel Transfer Pump
Model No. EC96

Syphon action drainer with starter bulb and one-way valve.

Length: 2m



E Emergency Fuel Transfer Pump
Model No. EC97

Easy-to-use compact syphon pump with self-priming feature, suitable for low viscosity oils and non-aggressive chemicals.

Length: 1.7m



F Fluid Transfer Pump
Model No. TP501

Brass constructed pump suitable for syphoning a variety of fluids including oils, coolants, transmission fluid, diesel and antifreeze. Fitted with removable neoprene end caps. Supplied with 1m x 6mm intake hose and 600mm x 12mm discharge hose. Ideal for draining gearboxes and differentials. Delivers approximately 100ml per stroke.



G Multipurpose Syphon & Pump Kit
Model No. TP50

Composite pump assembly suitable for the syphoning of fluids including diesel, petrol, oil, detergents and pesticides. Not suitable for use with aggressive detergents and solvents. Supplied with two 1.3m transfer hoses and a 1.2m narrow bore hose for performing oil extraction through the dipstick tube. The pump may also be used on inflatables such as footballs and tyres - a 400mm hose and various clip-on connectors are supplied for this purpose.



TP50 is suitable for syphoning petrol and diesel.



STORAGE OF FUEL
Note that most local authorities permit the in-use storage of limited quantities of fuels without holding a storage licence. Check with your local authority for more details.



H Double Diaphragm Fuel Transfer Pump
Model No. TP6918

Self-priming high performance double diaphragm lever pump. Heavy-duty die-cast aluminium pump head with stainless steel pistons and fuel resistant nitrile rubber diaphragm. 2" BSP Connector and telescopic dip tube to suit 50 to 205L drums. Approximately 800ml per full stroke discharge. Supplied with 8ft anti-static discharge hose and delivery nozzle with holder. Suitable for various oils, petrol, diesel, antifreeze, paraffin and other non-corrosive fluids.



A - C 3L Stackable Fuel Cans with Flexible Spout
Model No. [SEE BELOW](#)

Plastic fuel cans with safety screw lock cap and flexible spout. Stackable design to save space. Colour-coded for easy identification of contents. Black - Diesel, Green - Unleaded Fuel, Red - Lead Replacement Fuel.

	A	B	C
Model No:	JC3B	JC3G	JC3R
Colour:	Black	Green	Red
Capacity:	3L	3L	3L



D - I 5L & 10L Fuel Cans with Flexible Spout
Model No. [SEE BELOW](#)

EN and UN approved plastic fuel cans with safety screw lock cap and flexible pouring spout. Colour-coded for easy identification of content. Red - Lead Replacement Fuel, Green - Unleaded Fuel, Black - Diesel.

	D	E	F	G	H	I
Model No:	JC5B	JC10PB	JC5G	JC10PG	JC5R	JC10PR
Colour:	Black	Black	Green	Green	Red	Red
Capacity:	5L	10L	5L	10L	5L	10L



J - K Jerry Can Adaptors
Model No. [SEE BELOW](#)

Jerry can adaptors suitable for converting standard jerry cans into portable fuel tanks for generators, engines and other equipment. Features breather holes and bayonet style fittings to attach onto all Sealey metal jerry cans. Ideal for testing/running engines on alternative fuel sources. JCA2 features secondary return hose fitting. Suitable for Ø8mm hose (not included).

Model No:	Adaptor Type:
J JCA1	Single Tube
K JCA2	Double Tube



L Vehicle Brackets for Jerry Cans
Model No. [SEE BELOW](#)

Lockable vehicle mounting brackets with anti-vibration mounts for Sealey metal 10L and 20L jerry cans. Ideal for a variety of vehicles including agricultural, 4x4 and commercial. Padlock not included.

Model No:	Jerry Cans Suitability:
JC10VB	10L
JC20VB	20L

A - I 5, 10 & 20L Jerry Cans
Model No. SEE BELOW

Manufactured from 0.9mm pickled steel sheet with fuel resistant lining. Available in 5L, 10L and 20L capacities. Colour-coded for easy identification of content. Red - Lead Replacement Fuel, Green - Unleaded Fuel, Black - Diesel. Includes unique wide channel breather for smoother pouring. Leak-proof bayonet closure allows storage of the can in any position. The bayonet is additionally secured with a locking pin to prevent accidental opening. Lined inner tank to prevent rusting from petrol, diesel, oil, water or alcohol. Manufactured and tested to comply with UN Dangerous Goods and DIN standards.



A - C Jerry Cans - Red
Model No. SEE BELOW

	A	B	C
Model No:	JC5MR	JC10	JC20
Capacity:	5L	10L	20L
Spout (Optional):	JC20/S	JC20/S	JC20/S



J Pouring Spouts
Model No. SEE BELOW

Detachable pouring spouts for JC5M, JC10 and JC20 Series Jerry Cans.

Model No:	Colour:
JC20/S	Red
JC20G/S	Green
JC20B/S	Black



D - F Jerry Cans - Green
Model No. SEE BELOW

	D	E	F
Model No:	JC5MG	JC10G	JC20G
Capacity:	5L	10L	20L
Spout (Optional):	JC20G/S	JC20G/S	JC20G/S



K Flexible Pouring Spouts
Model No. SEE BELOW

Detachable flexible pouring spouts for JC5M, JC10 and JC20 series Jerry Cans.

Model No:	Type:
JC20D/S	Diesel
JC20P/S	Petrol



G - I Jerry Cans - Black
Model No. SEE BELOW

	G	H	I
Model No:	JC5MB	JC10B	JC20B
Capacity:	5L	10L	20L
Spout (Optional):	JC20B/S	JC20B/S	JC20B/S



L 5L & 10L Metal Jerry Can Smart Spout
Model No. JCSS

Detachable smart spout for Model No's. JC5MG, JC5MB, JC5MR, JC10G, JC10B, JC10R Jerry Cans. Suitable for filling a vast range of small engines. Automatic stop feature ensures no overspill occurs.



M Jerry Can Seal
Model No. JCS01

Universal seal suitable for standard 5, 10 and 20L Jerry Cans.

Barrel Bunds

Anyone storing oil in containers greater than 200L are affected by the Control of Pollution (Oil Storage) Regulations 2001. Any tank, container or drum must be banded. The bund must have a capacity of no less than 110% of the largest or 25% of their total aggregate storage capacity, whichever is the greater. All Sealey Barrel Bunds comply with these regulations.

A - B Polyethylene Barrel Bunds

Model No. SEE BELOW

Manufactured from polyethylene, making the bunds ideal for storing aggressive chemicals. Corrosion resistant, will not rust or leak and are maintenance-free. Lightweight for easy transportation and positioning, yet still strong and durable.

Model No:	Dimensions (W x D x H):	Drum Capacity:
A DRP12	1220 x 820 x 330mm	2 x 205L
B DRP13	1280 x 1280 x 275mm	4 x 205L



C - D Steel Barrel Bunds

Model No. SEE BELOW

Manufactured from heavy-duty 3.5mm steel. Removable galvanized steel grid platform. Bund can be accessed and moved from all four sides.

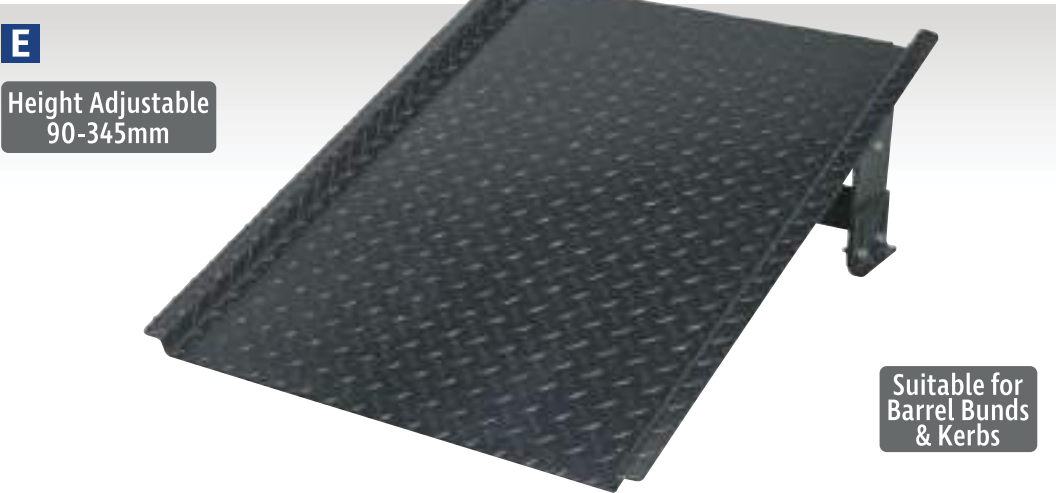
Model No:	Dimensions (W x D x H):	Drum Capacity:
C DRP10	1340 x 800 x 335mm	2 x 205L
D DRP11	1200 x 1200 x 275mm	4 x 205L

E Adjustable Height Ramp for Barrel Bunds & Kerbs

Model No. DRP15

Adjustable ramp enables easy drum handling over kerbs and onto barrel bunds. Made from heavy-duty steel with tread plate to help prevent slipping whilst moving drum. Height adjustment allows ramp to fit barrel bunds from 275 to 345mm high. Adjustable kerb attachment allows easy-access up and down kerbs from 90 to 140mm high.

Length:	965mm
Ramp Width:	750mm
Overall Width:	830mm
Barrel Bund Height Adjustment:	275-345mm
Kerb Height Adjustment:	90-140mm



Suitable for Barrel Bunds & Kerbs

A - B Polyethylene Barrel Bunds
Model No. SEE BELOW

Manufactured from high-density polyethylene, making the bunds ideal for storing aggressive chemicals. Lightweight construction for easy transportation and positioning, yet still strong and durable. Features 250L spill tray, compatible with most forklifts and pallet trucks.

Model No:	Dimensions (W x D x H):	Drum Capacity:
A DRP17	1300 x 750 x 440mm	2 x 205L
B DRP18	1380 x 1290 x 280mm	4 x 205L

C IBC Bund 1490 x 2000 x 765mm
Model No. DRP24

Heavy-duty polyethylene IBC bund designed to catch and prevent spillages. Constructed with raised dispensing area with 10L sump. Features polyethylene centre support providing added strength and stability to load. Manufactured with 1100L spill tray to comply with storage regulations. Suitable for storage of 1 x IBC container. Can be easily moved by forklifts and pallet trucks.

Dimensions (W x D x H):	1490 x 2000 x 765mm
Drum Capacity:	1 x IBC



D 2 Drum Work Floor 1600 x 800 x 150mm
Model No. DRP20

Heavy-duty polyethylene work floor suitable for storing two 205L drums. Features 120L spill tray under removable platform to catch and prevent oil and chemical spillages. Suitable for short term storage of 205L drums. Designed for creating a dispensing area or for static containment of spills. Manufactured with slip resistant surface and lightweight construction allowing easy transportation and positioning. Ramp available to access work floor, order Model No. DRP21.

Dimensions (W x D x H):	1600 x 800 x 150mm
Drum Capacity:	2 x 205L

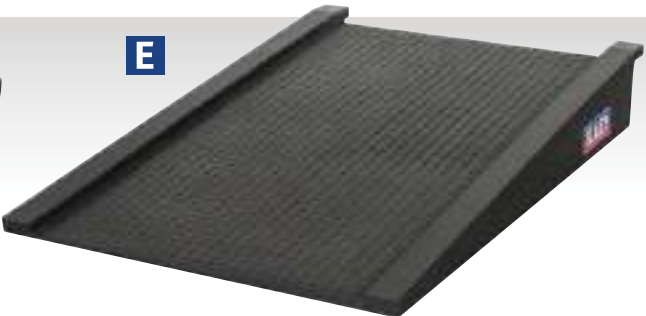
E Work Floor Ramp
Model No. DRP21

Heavy-duty polyethylene ramp compatible with Model No. DRP20. Fitted with locating pins which slot into DRP20 work floor for added stability when manoeuvring drum. Manufactured with non-slip resistant texture. Features user friendly gradient for easy loading.

Dimensions (W x D x H):	810 x 1290 x 180mm
--------------------------------	--------------------



This product is manufactured to order and due to the size, is delivered direct from our factory to all areas within the UK mainland. Please allow at least 15 working days for delivery and provide the full address, postcode, contact and telephone number for the place of delivery. Please be aware that additional carriage charges may apply for some areas of Devon/Cornwall, Scotland, Wales and other areas due to remoteness of location; this may extend delivery times. Deliveries to Northern Ireland, Republic of Ireland, Isle of Man, Isle of Wight, Jersey, Guernsey and other offshore islands have to be individually priced on application and are outside of our normal carriage paid terms.





A 2 Drum Storage Racking
Model No. **DRP34**

Manufactured from heavy-duty steel. Stores two 205L drums in a horizontal position.

Dimensions (W x D x H): 1145 x 760 x 325mm



Model No. **DRP34** can be stacked to a maximum of 2 levels.



B Dispensing/Storage Drum Rack Unit
Model No. **DRP22**

High-density polyethylene construction, suitable for storing 2 x 205L drums. Moulded with gradual decline and recesses to secure drum. Horizontal storage of drums provides access to dispense contents into smaller containers. Fitted with 450L spill tray ideal for catching and preventing spillages. Can be easily moved by forklifts and pallet trucks.

Dimensions (W x D x H): 1375 x 1350 x 635mm
Drum Capacity: 2 x 205L



C-F Spill Trays
Model No. **SEE BELOW**

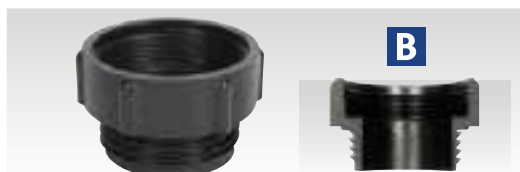
Manufactured from high-density polyethylene, making these spill trays ideal for catching and preventing oil and chemical spillages. Lightweight for easy transportation and positioning, yet still strong and durable. Spill trays available with or without platform.

Model No:	Dimensions (W x D x H):	Spill Capacity:	Drum Capacity:
C DRP30*	800 x 400 x 165mm	30L	2 x 25L
D DRP31	800 x 400 x 165mm	30L	2 x 25L
E DRP32*	1000 x 600 x 175mm	60L	4 x 25L
F DRP33	1000 x 600 x 175mm	60L	6 x 25L

*Note Model No's **DRP30** & **DRP32** are without platforms.



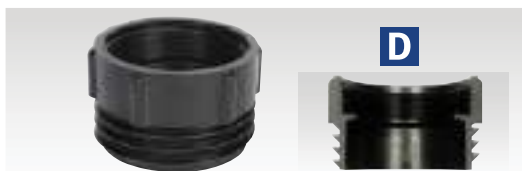
A 69mm Multi-Neck Drum Adaptor
Model No. TPA01



B 56mm Trisure Drum Adaptor
Model No. TPA02



C 64mm US Buttress Drum Adaptor
Model No. TPA03



D 69mm Mauser Drum Adaptor
Model No. TPA04



E 58mm Berg Drum Adaptor
Model No. TPA05



F 61mm Metal Box Drum Adaptor
Model No. TPA06



G 61mm DIN 61/31 Drum Adaptor
Model No. TPA07



H 55mm DIN 51 Drum Adaptor
Model No. TPA08



I 71mm DIN 71 Drum Adaptor
Model No. TPA09

A - J Drum Adaptors
Model No. SEE BELOW

Choose from our extensive range of high quality polypropylene drum adaptors. Manufactured to fit all popular makes of drum closures. All adaptors are fitted with standard 2"BSP thread.

	A	B	C	D	E	F	G	H	I	J
Model No:	TPA01	TPA02	TPA03	TPA04	TPA05	TPA06	TPA07	TPA08	TPA09	TPA10
Thread A Ø:	2"BSP	2"BSP	2"BSP	2"BSP	2"BSP	2"BSP	2"BSP	2"BSP	2"BSP	2"BSP
Thread B Major Ø:	69mm	56mm	64mm	69mm	58mm	61mm	61mm	55mm	71mm	51mm
Thread B Minor Ø:	50mm	51mm	57mm	62mm	55mm	57mm	55mm	51mm	66mm	46mm
Thread B Pitch:	-	4.5mm	5mm	6mm	3.5mm	5mm	6mm	5mm	6mm	4mm



J 51mm DIN 46 Drum Adaptor
Model No. TPA10



K 2"BSP Drum Tap
Model No. TP125

Polyethylene drum tap with 2"BSP thread, fitted with EPT gasket. Features padlock hole, hanging hook for buckets and port for installing a sight glass. Large bore drains drums quickly and easily.



L 3/4"BSP Drum Tap
Model No. TP126

Polythene constructed drum tap with 3/4"BSP thread.



M 3/4"BSP Lockable Drum Tap
Model No. TP12

Polythene constructed tap with 3/4"BSP thread and neoprene washer.



N 1/2" & 3/4"BSP Drum Tap
Model No. TP124

Brass body and nickel plated drum tap with hose tail outlet suitable for use with extension hoses. Fitted with 1/2"BSP thread and supplied with 3/4"BSP adaptor. Needs only half turn of handle to open or close tap.



O 3/4"BSP Zinc Die-Cast Lockable Drum Tap
Model No. TP128

Zinc die-cast, push-pull tap with locking facility to prevent unauthorised access to drum contents. Nitrile seals, suitable for most liquids normally stored in plastic and steel drums. 3/4"BSP Thread.



P 3/4"BSP Auto-Release Lockable Drum Tap
Model No. TP123

Self-closing safety drum tap with brass plated alloy body. Features built-in flame arrestor for dispensing flammable or non-flammable liquids. Steel handle can be padlocked closed. Fitted with 3/4"BSP thread.



A Aluminium Drum Wrench

Model No. TP130

Manufactured from hardened and tempered cast aluminium for increased strength. Designed to fit most 2" BSP and 3/4" BSP drum plugs.

Length: 270mm

B Drum Wrench

Model No. TP122

Universal wrench suitable for opening a variety of drums. Made from a tough composite material.

C IBC Pump Mounting Bracket

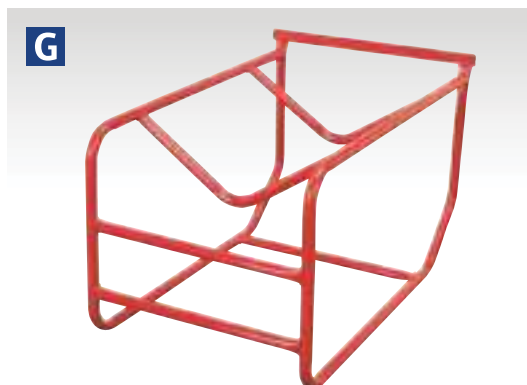
Model No. ADB08

Hanging bracket and fixings to attach Sealey 12V and 230V fluid transfer pumps to 1000L intermediate bulk containers. Supplied with a delivery nozzle holder that can also act as a drip tray to catch any accidental spills. Can be used with most brands of fluid transfer pumps.

D Drum Pump Mounting Bracket

Model No. ADB09

Bracket and fixings to attach Sealey 12V and 230V fluid transfer pumps to 205L barrels. Supplied with a delivery nozzle holder that can also act as a drip tray to catch any accidental spills. Can be used with most brands of fluid transfer pumps.



G 205L Drum Stillage

Model No. TP11

Allows safe storage of 205L drums in the horizontal position for quick dispensing of contents. Radiused frame helps up-end drums.

H Mobile 205L Drum Stillage

Model No. TP112

Allows safe storage of 205L drums in the horizontal position for quick dispensing of contents. Radiused frame helps up-end drums. Highly manoeuvrable on two heavy-duty rubber tyres and two castors. Fitted with rubber hand grip.



E Drum Level Indicator

Model No. TP129

Easy and cost effective method of determining level of fluid in a 205L drum. Fitted with a 3/4" BSP thread which screws directly onto the smaller hole on 205L drums, leaving the 2" BSP thread free for installing pumps. Indicator face is marked from 0-210 litres. Unit is fitted with a water filled polyethylene float allowing the indicator to be used with a variety of fluids. Note: TP129 is not a precise measuring device, unit is for indication purposes only.



F Mobile 205L Drum Handler

Model No. DH02

Ideal for manoeuvring, relocating and draining fully loaded drums. Lever handle raises drum in stages with fingertip operated locks. Adjustable for reach/leverage and clamp height. Clips on both sides hold drum secure in vertical or horizontal positions. Drum can be manually adjusted and held at any angle or, if contents need mixing, can be turned end-over-end. Fitted with two smooth-rolling, heavy-duty wheels and one castor with brake. Suitable for 205L drums.





A 205L Hydraulic Drum Truck
Model No. DH01

Less manual effort required as hydraulic ram clamps drum, then raises it off the ground for simple manoeuvring and relocation. Cradle is fitted with two smooth-rolling, heavy-duty wheels and one castor with brake. Suitable for 205L drums.

Lifting Height:	300mm
Width:	780mm
Drum Size:	205L
Weight:	37.3kg



D Drum & Barrel Trolley
Model No. TP13

Rigid steel construction suitable for safe movement and storage of steel and plastic barrels. Cradle fitted with two, smooth-rolling, heavy-duty, Ø150mm wheels and one Ø75mm castor. 2-Position handle locks upright or at 45° and features tools for five different drum caps and a metal drum tilting attachment.



B 205L Drum Dolly
Model No. TP205

Transport drums quickly and safely on four large metal castors. Wheel positioning ensures even weight distribution enabling easier manoeuvrability. Suitable for use with 205L drums.

Maximum Inner Diameter:	Ø605mm
Optional Handle:	TP205H



C 205L Drum Handling Trolley
Model No. ST30

Tubular steel construction with solid rubber tyres. Simple-to-use, slip the loading lip under the drum and rock the drum over. The curve of the frame allows the drum to roll the trolley onto its wheels ready for transit. Drum can be secured using chain supplied. Fitted with rubber hand grips. Heavier loads may require 2-person operation. Designed for use with drums that are at most half full.

Size (W x D x H):	680 x 560 x 1360mm
-------------------	--------------------



E 205L Drum Trolley/Stillage
Model No. ST35

Heavy-duty tubular steel construction drum trolley. Ideal for moving full 205L drums easily and safely. Features spring loaded mechanism ensuring stability and control whilst under load. Fitted with four wheels for moving easily over uneven surfaces. Features bracing strap to ensure load is secure. Unit can lay flat to enable use as a stillage.

Size (W x D x H):	550 x 560 x 1600mm
-------------------	--------------------

A



Hydraulic



B

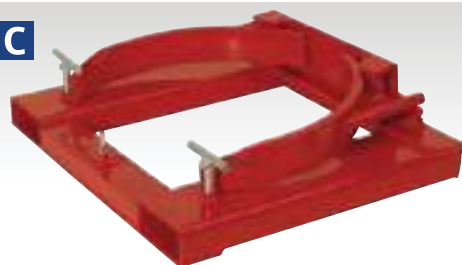


**B Gator Grip Forklift
205L Drum Grab - 400kg Capacity
Model No. DG06**

Manufactured from heavy-duty steel. Fitted with automatic grip lock to ensure maximum grip is maintained over rough terrain. Features suspension system to ensure safety. Suitable for use with 205L steel drums. Unit attaches to most forklifts and is secured using two heavy-duty fixing bolts.

Capacity:	400kg
Drum Size:	205L
Fork Opening:	560mm
Overall Size (W x D x H):	710 x 660 x 730mm
Weight:	60kg

C



**C 205L Drum Clamp for Forklift
350kg Capacity
Model No. DG02**

Simple mechanical feature allows drums to be picked up, relocated and released without leaving the driving position. Secures tightly to forklift arms using hand screws. Heavy-duty steel construction. Suitable for use with 205L drums.

Capacity:	350kg
Fork Opening:	623mm
Drum Size:	205L
Weight:	55kg



C

D



**D 205L Drum Grab - 350kg Capacity
Model No. DG01**

Lifts open or closed, loaded, steel drums with the aid of an overhead hoist. Keeps drum in vertical position reducing spillage. Heavy-duty steel construction. Suitable for use with 205L drums.

Capacity:	350kg
Drum Size:	205L
Weight:	9kg

E



**E 205L Drum Tongs - 500kg Capacity
Model No. DG05**

Manufactured from heavy-duty steel with welded gripping hooks. Suitable for lifting 205L horizontal steel drums with an overhead hoist. Drum release tongs allow the hooks to slot into place and locate under the drum rims. Hooks automatically engage when lifting and disengage once the load is set down. Fitted with semi-automatic release lever.

Capacity:	500kg
Drum Size:	205L
Weight:	7.6kg

F



**F 205L Drum Grab - 500kg Capacity
Model No. DG04**

Manufactured from heavy-duty steel with welded gripping hooks. Suitable for lifting 205L vertical steel drums with an overhead hoist. Hooks fit under the lip of the drum to provide a secure and stable lift.

Capacity:	500kg
Drum Size:	205L
Weight:	5kg

G



**G 3-Leg 205L Drum Grab - 350kg Capacity
Model No. DG03**

Manufactured from heavy-duty steel. Features three gripping hooks to provide maximum security and control when lifting. Suitable for lifting 205L vertical plastic and steel drums. Compatible for use with an overhead hoist.

Capacity:	350kg
Drum Size:	205L
Weight:	4.5kg



A - C Ultrasonic Cleaning Tanks
Model No. **SEE BELOW**

Designed for the professional with the hobbyist in mind. Ultrasonic cleaners that achieve great results on delicate items such as watch parts, PCB boards and electrical components, as well as mechanical items such as carburettors, spark plugs and injectors. The Degas function purifies the liquid in the tank to speed up the cleaning process. Using ultrasonic wave vibration, the intense cleaning action of the microscopic bubbles can penetrate the most inaccessible parts to remove dirt and grime. Achieve a pristine condition without any damage or wear to item. Made from durable stainless steel and fitted with a drain tap for easy emptying and mesh basket to keep smaller components together. Features soft cleaning mode enabling you to clean more fragile items.

	A	B	C
Model No:	SCT03	SCT09	SCT27
Minimum Working Capacity:	2L	5L	14L
Maximum Working Capacity:	3L	9L	27L
Supply:	230V	230V	230V
Motor Power:	100W	200W	500W
Overall Dimensions (W x D x H):	270 x 170 x 240mm	330 x 270 x 310mm	500 x 330 x 360mm
Weight:	3.6kg	8.56kg	16kg



D 15L Bench/Portable Parts Cleaning Tank
Model No. **SM21**

One-piece tank with triple baked finish and fully sealed magnetic drive pump unit with replaceable impeller. Smaller capacity tank is suitable for benchtop mounting. Recirculated fluid is filtered before entering the pump and is directed over the workpiece with a flexible metal delivery nozzle. Includes removable shelf.

Overall Height:	225mm
Tank Height:	210mm
Tank Depth:	290mm
Tank Width:	395mm
Pump Output/hr:	90L
Motor Power:	26W
Supply:	230V
Weight:	7kg
Minimum Working Capacity:	7L
Maximum Working Capacity:	15L



E 16L Mobile Parts Cleaning Tank with Brush
Model No. **SM22**

Blow-moulded parts cleaning tank with brush. Lightweight and mobile unit suitable for benchtop mounting. Fluid recirculated through filter and directed onto workpiece through long reach hose and brush. For use with soluble cleaning agents only.

Overall Dimensions (H x W x D):	250 x 606 x 460mm
Internal Dimensions (H x W x D):	75 x 520 x 350mm
Pump Output/hr:	1000L
Motor Power:	16W
Supply:	230V
Weight:	5.1kg
Minimum Working Capacity:	7.5L
Maximum Working Capacity:	16L



F Parts Cleaning Brush with Hose
Model No. **SM201**

Fits onto the flexible spout of Sealey parts cleaning tanks (except Model No. SM21). To use with Model No. SM40 order Model No. SM201/A (see **H**).

G Parts Cleaning Brush
Model No. **BAPC/1**

Double end cleaning brush with solvent resistant bristles.

Length: 300mm



I Magnetic Stainless Steel Parts Strainer
Model No. **SMS011**

Magnetic stainless steel parts strainer, a great solution for storing nuts, bolts, parts and tools whilst in the process of cleaning. Corrosion free, lightweight design with magnetic base. Ideal for use with most parts cleaning systems.

Diameter: Ø270mm



A 50L Workshop Parts Cleaning Tank
Model No. SM19

Heavy-duty one-piece tank. Fully sealed electric motor with magnetic drive pump unit. Lid features self-latching fusible link which automatically snaps lid shut in the event of a fire. Includes removable shelf and small parts basket. Flexible metal nozzle directs solvent over work. Supplied with workshop stand with integral storage shelf.

Overall Height:	880mm
Tank Height:	260mm
Tank Width:	540mm
Tank Length:	810mm
Pump Output/hr:	200L
Motor Power:	15W
Supply:	230V
Weight:	23.3kg
Maximum Working Capacity:	50L
Minimum Working Capacity:	40L

D 50L Air Operated Mobile Parts Cleaning Tank with 65L Reservoir
Model No. SM224

Steel fabricated 65L reservoir and 50L one-piece tank. Mobile unit with two castors and two fixed wheels, can easily be taken to work area. Air operated unit can be charged and used remotely without air supply for a limited period. Includes brush for cleaning workpiece and air blow gun for fast drying. Reservoir fitted with fluid level indicator and drain tap. Supplied with removable shelf and tray. Lid fitted with fusible link which automatically snaps lid shut in the event of a fire.

Overall Height:	1040mm
Tank Height:	180mm
Tank Depth:	485mm
Tank Width:	775mm
Pump Output/hr:	140L
Supply:	Air
Operating Pressure:	40-60psi
Air Consumption:	6cfm
Air Inlet:	1/4"BSP
Weight:	39.6kg
Maximum Working Capacity:	50L
Minimum Working Capacity:	n/a



B 50L Mobile Parts Cleaning Tank
Model No. SM28

Heavy-duty one-piece tank. Fully sealed electric motor with magnetic drive pump unit. Lid features self-latching fusible link which automatically snaps lid shut in the event of a fire. Includes removable shelf and small parts basket. Flexible metal nozzle directs solvent over work. Stand fitted with four Ø100mm castors for easy manoeuvrability, two of which are lockable.

Overall Height:	898mm
Tank Height:	260mm
Tank Width:	540mm
Tank Length:	810mm
Pump Output/hr:	200L
Motor Power:	25W
Supply:	230V
Weight:	26kg
Maximum Working Capacity:	50L
Minimum Working Capacity:	40L



C 50L Workshop Parts Cleaning Tank with Turbo Feature
Model No. SM20

Heavy-duty one piece steel tank. Triple baked enamel finish and fitted with fully sealed, magnetic drive pump unit. Fluid recirculated through replaceable filter element and directed onto workpiece through flexible metal delivery nozzle. Turbo agitation, bubbles air through fluid to reduce soaking time and requires workshop air supply in addition to 230V electrical supply. Can be used without turbo agitation if desired. Lid of tank fitted with fusible link hinge which automatically snaps lid shut in the event of a fire. Supplied with removable shelf and parts basket.

Overall Height:	880mm
Tank Height:	260mm
Tank Width:	540mm
Tank Length:	810mm
Pump Output/hr:	200L
Motor Power:	25W
Supply:	230V
Weight:	23.62kg
Maximum Working Capacity:	50L
Minimum Working Capacity:	40L





A 80L Parts Cleaning Tank
Model No. SM40

One-piece tank construction with triple baked enamel finish and fitted with fully sealed, magnetic drive pump unit. Fluid recirculated through replaceable filter element and directed onto workpiece through flexible metal delivery nozzle. Large capacity tank is suitable for cleaning larger engine components with up to 80L maximum working capacity. Lid of tank fitted with fusible link which automatically snaps lid shut in the event of a fire. Supplied with removable shelf and parts basket.

Overall Height:	890mm
Tank Height:	270mm
Tank Width:	520mm
Tank Length:	1090mm
Pump Output/hr:	200L
Motor Power:	25W
Supply:	230V
Weight:	42kg
Maximum Working Capacity:	80L
Minimum Working Capacity:	57L



B 136L Extra Deep Parts Cleaning Tank
Model No. SM40D

Heavy-duty one-piece steel tank. Extra deep tank is suitable for soaking and cleaning awkwardly shaped components. Fitted with fully sealed, magnetic drive pump unit. Lid of tank fitted with fusible link which automatically snaps lid shut in the event of a fire. Supplied with removable shelf and parts basket.

Overall Height:	1030mm
Tank Height:	400mm
Tank Depth:	560mm
Tank Width:	900mm
Pump Output/hr:	300-480L
Motor Power:	15W
Supply:	230V
Weight:	43kg
Maximum Working Capacity:	136L
Minimum Working Capacity:	91L



C 55L Air Operated Parts Cleaning Tank
Model No. SM22

Heavy-duty welded steel tank. Fitted with fully sealed and air operated pump unit. Considered safe for use in hazardous environments due to the absence of electricity. Lid of tank fitted with fusible link which automatically snaps lid shut in the event of a fire. Supplied with removable shelf and parts basket.

Overall Height:	890mm
Tank Height:	270mm
Tank Depth:	520mm
Tank Width:	750mm
Pump Output/hr:	205L
Supply:	Air
Operating Pressure:	90psi
Air Consumption:	6cfm
Air Inlet:	1/4"BSP
Weight:	31kg
Maximum Working Capacity:	55L
Minimum Working Capacity:	48L



D 85L Air Operated Parts Cleaning Tank
Model No. SM223

Heavy-duty one-piece steel tank. Fitted with fully sealed and air operated pump unit. Turbo agitation, bubbles air through fluid to reduce soaking time and requires workshop air supply. Extra-large capacity tank is suitable for cleaning larger engine components. Includes air blow gun for fast drying of workpiece. Lid of tank fitted with fusible link which automatically snaps lid shut in the event of a fire. Supplied with removable shelf and parts basket.

Overall Height:	890mm
Tank Height:	265mm
Tank Depth:	510mm
Tank Width:	1070mm
Pump Output/hr:	300L
Supply:	Air
Operating Pressure:	65-125psi
Air Consumption:	8-10cfm
Air Inlet:	1/4"BSP
Weight:	41kg
Maximum Working Capacity:	85L
Minimum Working Capacity:	55L



For our full range of safety equipment, see pages 1237 - 1264.



For our full range of Degreasing Solvent, see page 1326.