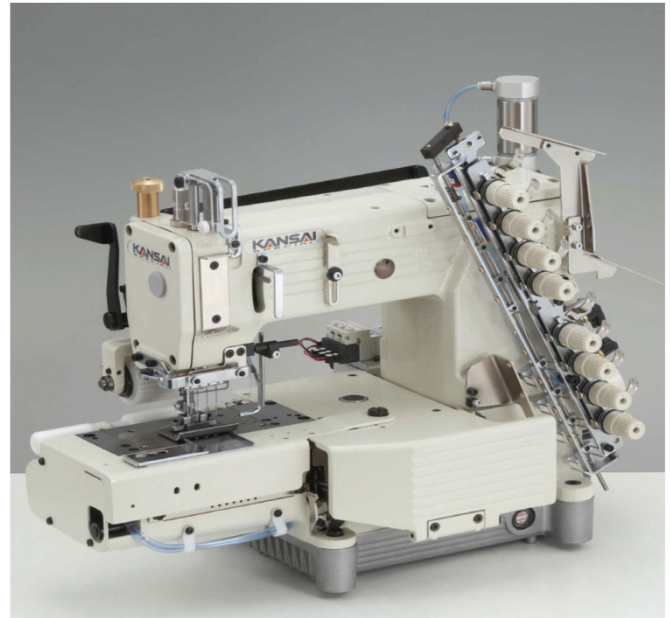
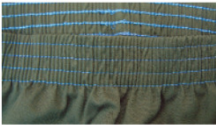




Multi needle machine

FX-4404P/UTC/DM

4 needle, cylinder bed,
double chain stitch machine
For attaching pre-closed elastic with
pneumatic thread trimmer.



UTC(Automatic Thread Cutter)system

Increase in productivity up to 160%

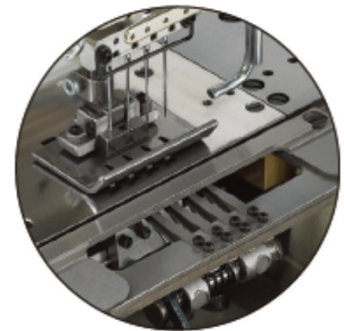
- Reducing working hours of operators
- Less thread wastage(Save approx.10cm per needle)

Saving labor cost

- No helper needed for trimming thread

Reducing the troubles

- Automatic needle positioning and foot lift
- Less needle breakage and thread snaps



Direct Drive Motor



Controls the needle and presser foot with the pedal

Fast and consistent quality

- One shot positioning
- Highly accurate positioning $\pm 3^\circ$
- Low noise, low vibration, low power consumption
- Touch panel for multi-positioning mode and easy adjustments

Model Name	Application	Material	Needle	No. of threads	Needle gauge (inch)	Needle bar stroke	Stitch length	Diff.Feed ratio	Presser foot lift	Maximum Speed
FX-4404P/UTC/DM	Sports Wear Trunks etc.	light to medium	DV x 57 14	8	1,3/4, 1-1/8, 1-1/4, 1-1/2	34.5mm	7~17stitch/inch	N/A	8mm	4500

Morimoto Mfg. Co., Ltd.

180, Suna, Shijohnawate-City, Osaka 575-0001, Japan
Tel: (81)72-877-1221 Fax: (81)72-878-9649 URL: www.kansai-special.com