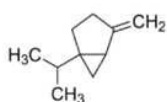




Essential Oil

Together We Work For Full Fill Your Needs.

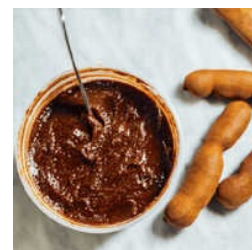
Agarwood Oil, Alpha Humulene, Benzoin Absolute, Benzoin Crystal, Benzoin Resin, Benzoin Resinoid 50-BB, Benzoin Sugar, Benzyl Isoeugenol, Beta Caryophyllene, Betel Leaf Oil, Black Pepper, Black Tea Extract, Botanical Chemical, Botanical Rag, Caryophyllene Acetate, etc.



NATURAL SABINENE



NATURAL TAMARIND EXTRACT



TAMARIND EXTRACT

About Us

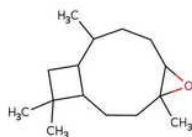
Van Aroma, which was established in 2006, has advanced to take the top spot in Indonesian Aroma Molecules, Botanical Extracts and Essential Oils market. Our transparency with clients and vendors is a strength and differentiator for us. High-quality ingredients are produced at the source thanks to our vertical integration of raw material supply with sites throughout Indonesia. Our initial facility was established in Padang, West Sumatra. It was here that Botanical Extract, Benzoin Sugar, Benzoin Absolute, Alpha Humulene, Benzyl Isoeugenol, Beta-Caryophyllene, Citronellol Natural, Essential Oil, and other products were first standardised. At the time of our founding, the two products we offered were Nutmeg Oil and Patchouli Oil. We swiftly expanded our offerings to include products from Sulawesi and Java thanks to our meticulous planning. We expanded our Jakarta factory in 2009 by adding a second facility to meet the increasing demand for our products.

This growth enabled us to concentrate on manufacturing more standardised, refined products, including the various Patchouli Oil and Clove Oil derivatives. Our infrastructure has now grown to incorporate steam distillation units, solvent extraction, reaction units, and supercritical fluid extraction, to name a few. We have also increased the size of our employees.

Key Facts

Nature of Business	Manufacturer
Primary Competitive Advantages	natural vanillin ex-clove oil,coffee extract,cocoa extract,lemongrass oil,geraniol oil,massoia bark oil,kaffir lime leaf oil,gurjun balsam,ginger oil,cajeput oil
No of Staff	195
Year of Establishment	2006
OEM Service Provided	No
Memberships	IFEAT , SEDEX , DAI
ProductRange	natural vanillin ex-clove oil,coffee extract,cocoa extract,lemongrass oil,geraniol oil,massoia bark oil,kaffir lime leaf oil,gurjun balsam,ginger oil,cajeput oil

Our Products



**Tabac Dodecane
Tobacarol**



Madura Extract



Garut Extract



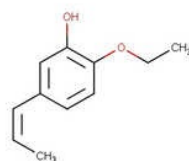
Dust Extract



Temulawak Curcuma



Botanical Rag



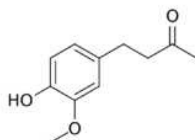
Vanitrope Chemical



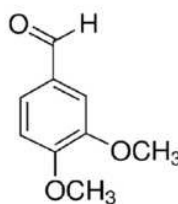
Benzoin Sugar



**Benzoin Resinoid 50-
BB**



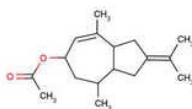
**Vanillylacetone
Zingerone**



Vanillin Chemical



Vanilla Extract



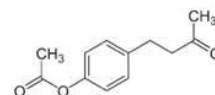
Vetiveryl Acetate



Benzoin Crystal



Black Tea Extract



Cuelure Chemical

ADDRESS



**Jalan Raya Mercedes Benz No.16
Cicadas, Cicadas, Gunung Putri,
Bogor, Jawa Barat, Jakarta,
Jakarta, Indonesia (16964).**

EMAIL



marketing@vanaroma.com

MOBILE



+62218677003

WEBSITE



vanaroma.tradeindia.com

KEY PERSONNEL
Aayush Tekriwal
(MARKETING DIRECTOR)