

About Company

We are ISO 9001-2000, certified company and our QC department conducts checks on inputs and different stages of production to ensure that quality of the final products is maintained as per the highest quality standards.

Our Legacy after Sales service is an integral part of our philosophy of Customer Service.

It is a COMMITMENT, A SENSE OF LOYALTY, NOT AN OBLIGATION

We have an ambitious expansive program and plan to add more products to our existing range in nearest future

Main Power

The experienced treatment and Engineers are parts of our Enthusiastic and dedicated team. Their rust experience cover various sector of manufacturing units & all of them are individually capable of providing solutions, taking intralives and finding out the resource you can bank of them.

Power Control Center - PCC

Power Control Centers (PCCs) normally comprise of either Breaker Panels Only or Breaker and MCC panels coupled together (9 PMCCs.) These conform to IS 8623 and IEC 439

Breaker panels can be offered either in single to two tier configurations. Busbars are designed for rating upto 3200 A and 65kA fault level for 1 sec. Higher ratings and fault levels can be offered



Breaker panels are suitable either for cable or busduct entry from top or bottom and can be coupled with either Single front or double Front MCC panels. The Breaker panels are provided with segregated compartments for safety.

Bus bars designed for upto 4000A at 50kA (rms) for 1 Sec, fault Level

Motor Control Center - MCC

The Motor Control Centers (MCC) from GE are of Modern Design with new generation features in confirmation to the requirements of Power Plants, Refineries and other Engineering & Process Industries. The MCCs confirm to US 8623 & IEC 439.

- ✦ Modular Design with Bolted assemblies on welded frame
- ✦ Panel of sheet steel for profile with internal parts Zinc Plated
- ✦ Fully Draout & Non Drawout version available in Single front
- ✦ Conforming to IP-55 Degree of Protection.



Automatic Power Factor Correction Control Panel

Capacitor Control Panels are provided for Controlling the power factor of the Complet installation. The Front of the Fully compartmentalized leader for controlling individual capacitors, where as rear side of the CCP House Capacitor in awell ventilated panel area.

- ✦ High speed Power Factor correction
- ✦ Thyristor Switching
- ✦ Maintaining Standard Reducing Electricity Consumption
- ✦ Provision of detuned Reactors in the panels for reliable operation in presence of Harmonics



Automatic Mains Failure Control Panel

AMF Control Panel is specially designed panel for standby generator. It consists of a state of the art micro controller based AMF Controller for mounting, Indicating and Controlling the mains and generator for AMF.

- ✦ Very compact designed provide with IP 55 degree protection.
- ✦ A Single unit incorporates all the AMF functions.

It monitor the mains and generator controls the supply input ,checks the status of generator and take necessary action in case of functions and display electrical parameter like Volt, Amps, Frequency, KW, KVA, P.F.etc display in a LCD display.

- ✦ Separate AC & DC wiring
- ✦ Multiple mode of operation Auto, Manual Test, By pass and Hold.



DOL, Star-Delta & ATS Control Panel

Our Manufactured Control Panel were used for operating submersible pump or other electric motors, & Specially for Rural agro electrical market

- ✦ Overload Protection
- ✦ Single Phasing Protection
- ✦ unbalance current Protection Three Phase Motor
- ✦ High/Low Voltage Protection
- ✦ Reverse Phasing Protection
- ✦ Dry run Protection
- ✦ Various Current rate setting
- ✦ Air Cooled transformer various taping 60%,70%,80% ATS.
- ✦ LED Indication.
- ✦ S/ D. & A.T.S. Control Panel MCC (2+1,1+1)



Bus Duct

Busduct designs are most important as busduct have much less volume of air dissipation compared to P.C.C. Busduct is an important link to feed power from transformer. L.T. side to the PCC in comer.

- ✦ Bus Duct upto 4000A with copper / Aluminium bus bars supported on DMC / SMC Support.
- ✦ Bus bar with Heat shrinkable Sleeves.
- ✦ Indoor/Out Door Duty, Separate Adapted Earthing at both End With Space Heaters & Earth bus.



Customer Made Control Panel

We are manufacturing Complete range of Project and Client Requirement Special Panel As Follow.

- ✦ Testing Panel
- ✦ Rotogravure / Flexo Printing Machines
- ✦ Lamination Plants
- ✦ Slitting & Rewinding Machines for Paper, Foil, Metal Etc.
- ✦ Wire Drawing Re-rolling.
- ✦ Tube Mill Plant
- ✦ Textile Processing Machines.
- ✦ Packing Machines
- ✦ Seweage Treatment Plant.



Road Construction Panel

Control Panels for Road with Push Button with Printer (Economy Range)

To get equipped with the Customer's needs, we are now introducing a new remarkable microprocessor based technology with cheaper price as per the needs of the Customer's to get familiar with the model in a deliberate way.

We provide microprocessor based control panel with the Display functions and special push buttons affixed on the panel for the User to work with ease. The model has higher production capacity as compared to the other panel's available on the market.

It works in routine as per the data entered and provides the output according to User needs. We can provide you control panel as per your exact requirement assessing your needs and its appropriate, controls and surprisingly with a very competitive price.



PLC Logic Panel

Our PLC panels are manufactures stands for programmable logic controller panels and are widely used in industrial process automation.

We make use of high quality raw material such as stainless steel and mild sheet steel in making these products; it is tested on various parameters before sending it at clients end.

it used for all kinds of industries like automobile, engineering, water treatment plant, effluent treatment plants, paper & printing industries, chemical and process plants.

Some of the area of application of our products include : Processing units Machine automation Factory automation Site supervising Pumping application It also communicates with various instruments like temperature indicating controllers, pressure indicating controllers, sensors etc.



FEATURES

Construction Feature

- Modular / Non-compartmentalised construction.
- Panel Structure with MS CRCA/SS 304/SS316.
- Single Front/Double Front Operated.
- Provision for Extensible from both sides
- Provision of Rubber gaskets to meet IP Requirement like IP 42/52/54/55/65
- Arrangement for Heat dissipation by means of Exhaust Fan / Lowers.

Pre Treatment and Painting

- Seven tank pre treatment process includes degreasing, derusting phosphating and Passivation.
- Final Paint shade as per IS or client specification.
- Synthetic Enamel / Epoxy based primer / Powder coating as per customer's requirement.

Busbar Arrangements And Cable Alleys

- Segregated Aluminium / Copper, Electrical grade Busbars/
- Main Busbar Chamber at the top or bottom.
- Separate chamber for vertical droppers.
- Busbar System design on basis of continuous current rating and fault-with stand capacity considering
- Allowable temperature rise as per IS 8623 or as per specifications.
- Busbar supports of SMC/DMC Material.
- Simple disimensioned Vertical Cable Alley for easy terminations.
- Cable entry from top or bottom. Detachable gland plate are provided for cable entry.

Assembly And Wiring

- Selection of components from approved / Reputed vendor list & as per approved drawings.
- Design of Internal layouts for optimum usage of space.
- Internal wiring with 660 / 1100 V Grade PVC coated stranded copper flexible wires.
- Crimping Lugs are used fir internal connection / Terminations.

Identifications

- Identification labels provided on each components.
- Internal wiring with ferrules at the both ends.
- Aluminium Anodise Labels are provided on each Feeder with Rating, Description & Tag No.
- Identification Labels are provided on Busbar Chamber, Cable Alley, Live Busbar etc.
- We use latest technology of label printing machines for labeling work.

Quality Assurance & Control System

- Inspection of Fabrication structure for dimensions as per approved G.A. Drawing.
- Inspection of painting / Powder Coating.
- Routine Test are conducted on each panels like :
 1. Insulation Resistance Test with 1000 V DC Megger.
 2. H.V. Test with 2.5 KV/Min Between Phases, Phase-Neutral, Ph-Earth, N-Earth
 3. High & Low Voltage Tubbing Test
 4. Function Test

INFRASTRUCTURE

Our workshop is 10000sq. ft in the industrial area highly developed. The manufacturing premises is fully designed to face any natural climate. It is having heavy ray protected roof and strong trimix R.C.C. flooring. The resurfing in better and Proper care have full equipped fabrication panel & QC Shop, our design department with professional cad system. Automation Department, fully spares stores.



Servo Tech Control System

Plot no.-58, Bileshwar Estate, Opp. G.V.M.M. Estate Nr. Sardar Patel Ring Road, Odhav, Ahmedabad. Tele: (O) 079-22901355, Fax.-079-22901356, M.-9825315375
E-mail ID : servotech2@gmail.com, servotech@live.com, Website : www.servotechpanel.in

SERVO TECH



AN ISO 9001 : 2008 COMPANY

Servo Tech brand control Panel are manufactured to international standards catering to entire low voltage spectrum. We are reputed manufactures of control panels. We are offering latest technology with distinguishing features of reliability, safety and rugged construction at an affordable price, i.e. Best Value for Money



C.P.R.I. Tested for
Short Circuit 4000A(65kA)
IP 65 and Temp. Rise

PRODUCT RANGE

ELECTRIC SYSTEM & AUTOMATION

- ✦ Power Control Center Panel
- ✦ Motor Control Center Panel
- ✦ Automatic Power Factor Correction Control Panel
- ✦ Automatic Mains Failure Control Panel
- ✦ Bus Ducts
- ✦ DOL, Star-Delta, Auto Transformer Control Panel
- ✦ Customer Made Control Panel
- ✦ AC Drive & Soft Starter Control Panels
- ✦ Logic Panel



SERVOTECH CONTROL SYSTEM

*Plot No:58,Bileshwar Estate,
Opp.G.V.M.M,EstateNr.Sardar Patel Ring Road,
Odhav,Ahmedabad-382415*

Phone. No :(079) 22901355, Tele/FAX. No: (079) 22901356.

E-mail: (1)servotech2@gmail.com(2) servotech@live.com.

Website: www.servotech.tradeindia.com,www.servotechpanel.com

AN ISO 9001 : 2008 COMPANY



*C.P.R.I. Tested For
Short Circuit
4000a(65ka) IP65 And
Temp.Rise*



INDEX

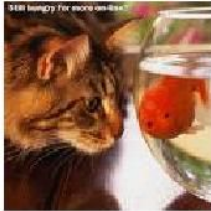
1.0 ABOUT US	03-05
1.1 OUR VISION	03
1.2 WHAT WE DO, OUR CONCEPT:	04
1.3 OUR BUSINESS STRATEGY:	05
2.0 GENERAL INFORMATION	05-06
2.1 COMPANY HISTORY & ACHIEVEMENTS	05
2.2 PRODUCT OF MANUFACTURING	06
3.0 COMPANY INFORMATION	07-09
3.1 MANUFACTURING FACILITIES	07
3.2 ORGANISATION AND PERSONNAL	07
3.3 OTHER ACTIVITIES	08
3.4 LIST OF MACHINERIES	08
3.5 LIST OF TESTING EQUIPMENT	09
3.6 FABRICATION ACTIVITY	
4.0 OUR CLIENTS (A COMBINATION OF SATISFACTION)	10-11
4.1 OUR VALUED CUSTOMER	10
4.2 LIST OF CONSULTANT	11
5.0 PRODUCT RANGE	12-14
5.1 MCC PANEL	12
5.2 PCC PANEL	12
5.3 ATS PANEL	12
5.4 APFC PANEL	13
5.5 BUS DUCT	13
5.6 D.G. SET CONTROL PANEL	13
5.7 POWER DIST. BOARD	14
5.8 LIGHTING PANEL	14
5.9 DRIVE/AUTOMATION PANEL	14
5.10 FEEDER PILLAR	14
5.11 HVAC PANEL	14
6.0 MANAGEMENT	15
7.0 OUR COMMITMENTS	15
8.0 ORGANISATION DIAGRAM	16
9.0 QUALITY POLICY	17

1. ABOUT US

Servo Tech augmented by qualified personnel experienced in large industrial projects. Servotech Control System being operating in India since 1992, providing total end - to - end solutions to its customers for Electrical Power requirements.

“Servotech Control System” specializes in the planning and execution of Various Types of Turnkey Projects. Power Plants catering to the petrochemical, power, fertilizer, cement, steel, aluminum, and other related industries and has established key solutions to deal with emergency and shutdown job.

Our Vision



‘Creating harmony between our vastly experienced and skilled technicians and the dedicated management team and unshakeable commitment to quality and time bound completion, ensure repeated successes’

1.1 What we do. Our Concept:

Together with the experience of the promoter in projects involving Government Sectors and Private industrial Sectors, Servotech Control System now looks forward to participating in the International projects to carrying out Design, Manufacturing, Installation and commissioning of Small, Medium & Large Captive Power Plant erection

Since inception of the company, we have been rendering the supply of electrical control panels, in the entire country. Currently, Servotech Control System is on a global expansion policy to expand its business horizons & is looking for strategic alliances for its turnkey based Power & Electrical Solutions (concept to commissioning) & control panels manufacturing division from unexplored markets.

Servotech Control System - a small but enterprising engineering unit, started by a team of young & again enterprising leaders - is heading towards becoming one of the leading panel board manufacturers in India – catering to all types of industries all over country.

We have implemented a complete quality control system & strictly adhere to internal quality control standards. Our dedicated & experience staff members as well as engineers monitor the entire production process & ensure that all final products meet the expectations of our most valued clients.

With a young team of well-educated, experience & dedicated professionals in the fields of design, development, manufacturing, we are confident in our ability to continue the higher growth rate of our company.

Our workstation is fully equipped with testing facilities like high voltage tests and other electric tests. We use state of the art CAD platform for entire stage of design & development.

We are also registered as approved supplier for many clients & a brief list of our most valued clients is attached here with.

Servo Tech brings to its clients an in-depth knowledge of the available products and techniques together with cost effective solutions to today’s energy conservation problems. Servo Tech has used its knowledge in Power utilization and optimise project execution cycles.

Servotech Control System provides a comprehensive range of industrial services including Designing Power requirement, Power Distribution, Energy saving and many more technological solution to the industrial house all over India.

“Servotech Control System” Engineers specializes in the planning and execution of large industrial Electrical Power Units .We provide complete turnkey solutions to all our clients' Industrial & Commercial needs.

All our services complement each other perfectly allowing Servo tech to plan, and execute them with ease. All planning, purchasing and execution can be conducted seamlessly, saving valuable time and money.

1.1 *Our Business Strategy:*

The industrial development and prosperity of every Nation depends of the amount of energy consumed and the availability of energy for further development. The increased demand will cause concern on the limited energy sources available. It is therefore necessary to make efficient utilization of whatever energy available and avoid wastage.

Team Servotech Control System is committed to deliver the best design and the right option for the selection of Electrical instrumentation and installations taking into consideration the choice of Cables, Bus Bars, Connections, Isolators, Circuit Breakers, SFU's, and all major Switchgears that directly or indirectly contribute to the safe and secure operation of any industry thus keeping the work place accident free from the Hazards and help in time and energy conservation.

With the primary goal to provide quality workmanship using the most economical means to satisfy our clients' requirements and specifications without compromising on quality Servo Tech has undertaken and successfully accomplished Industrial Power Distribution Panels, Cabling and allied services contracts through out India. It has to its credit carrying out various shut down jobs successfully executed and that too within the stipulated time period. This success can be attributed to the vast experience, knowledge and the management skills of Mr. H.D.Patel & Mr. G.R.Patel.

2. GENERAL INFORMATION

2.1 COMPANY HISTORY & ACHIEVEMENT

The company had been registered under the company's act as a partnership organization having 2 (Two) partners in the year 1992. Having started executing the work the company has achieved a valuable customer base all over Gujarat and INDIA with remarkable success and credibility of business house.

Incorporation is our achievement towards the customer satisfaction and performance of work & services provided. From last four years the company is involved in development of new technology and conventional system in providing better services and installation of the work at the clients end.

“SERVO TECH CONTROL SYSTEM Engineers” a medium size of business house is capable of executing large projects involving administration and management of multi skilled labors and professional for the project no matter the size of work and man power required for the project execution.

2.2 PRODUCT OF MANUFACTURING

We are manufacturing various types of Electrical Control Panels including the following:

- ❖ **Motor Control Center (MCC) Panel,**
- ❖ **Changeover Panel,**
- ❖ **Power Control Center Panel (PCC)**
- ❖ **Drive / Automation Control System Panel**
- ❖ **D.G. Set Control Panel,**
- ❖ **Power Distribution Board,**
- ❖ **MCB Distribution Board, Fuse Distribution Board,**
- ❖ **Auto Transformer Starter Panel (ATS)**
- ❖ **Automatic Power Factor Control Panel, (APFC)**
- ❖ **Lighting Control Panel**
- ❖ **Feeder Pillar**
- ❖ **Bus Ducts.**
- ❖ **HVAC Panel**

3. COMPANY INFORMATION

3.1 MANUFACTURING FACILITIES:

Work Location:-	Plot No. 58, Bileshwar Estate, Opp. G.V.M.M. Estate,Nr. Sardar Patel Ring Road, Odhav, Ahmedabad		
Nature of The Company:	-	Partnership Firm	
Type of Firm:	-	Manufacturers of Electrical Panel Boards	
Start of Production:	-	1/07/1992	
Our Bankers:	-	UBI	
Year of Establishment:	-	In 1992	
Our G.S.T. Tin No.	-	24075203943	
Our C.S.T. Tin No.	-	24575203943	
Our Income Tax Pan No.	-	AAQFS5060G	
No. Of Employees:	-	14 Employee in Our Organization	
Area of Factory:	-	860 Sq ft.	
Contact Person:	-	Mr. H.D.Patel, Mr. G.R.Patel,	
Design & Drafting Facilities:-	Auto 'CAD'-2006, Auto 'CAD'-2010		
Production Set Up:	-	Administrative	:-02
		Engineers	:-02
		Supervisor	:-01
		Mkt.Eng.	:-01
		Sr. Technician	:-02
		Skilled Workers	:-03
		Fitter	:-02
		Helper	:-01
		Draftsman	:-01

3.2 ORGANISATION AND PERSONNAL

Name of Firm	: - Servotech Control System
Postal Address	: - Plot No. 58, Bileshwar Estate, Opp. G.V.M.M. Estate, Near Sardar Patel Ring Road, Odhav, Ahmedabad
Telephone No	: - 079-2290 1355
Fax. no.	: - 079-2290 1356
Email ID.	: - servotech2@gmail.com

3.3 OTHER ACTIVITIES.

- ❖ Fine Electrical s Have Manufacturing & Servicing Activity of Electrical Control System.
- ❖ Maa Electricals also abive Activity in Unit.

3.4 LIST OF MACHINERIES

<u>SR.NO.</u>	<u>DESCRIPTION</u>	<u>UNIT</u>
1	Busbar bending machine Hydraulic (Manual) (Up to 150 x 12 busbar)	01
2	“Electric bench Grinder 1HP/440V/2800 RPM	01
3	¾” Capacity bench drilling machine	01
4	Air Compressor Complete with motor (2 Hp)	01
5	Electric Arc welding machine 2Hp capacity	01
6	½” Portable drill	01
7	3/8” Portable Drill	01
8	Hacksaw machine (Hydraulic)	01
9	Portable grinder machine	01
10	Busbar Cutter Machine	01
11	Blower Machine	01
12	Hot Air Gun Machine	01
13	Wire Feruling Machine	01
14	Crimping Tools	01

3.5 LIST OF TESTING EQUIPEMENT

<u>Sr. No.</u>	<u>NAME OF THE INSTRUMENTS</u>	<u>QTY.</u>
1	High Voltage Tester 5KV	01
2	1000V Magger	01
3	3Phase Dimmer (Variac)	01
4	Phase Sequence Indicator	01
5	Earth Tester	01
6	Multi Meter & Continuity Tester	02

3.6 FABRICATION ACTIVITY

Except industrial type pedestal switchboards, we use sheet folded construction in our panels. Welding is also minimized by using fasteners (bolts and nuts). This also provides unitized constructions. Further, the panel boards are fabricated from CRCA sheet having following thickness.

Frames, Load bearing members & large doors	: 2.0mm/2.5mm
Partitions & small doors	: 1.6mm
Front, back & side coves.	: 2.0mm
Gland plate	: 2.5mm
Base Channel	: 75x6 mm

Gasket of good quality is to be used on all four sides of the door to avoid atmospheric effect & restrict dust & vermin. Our panel have concealed hinges.

Our Panels are dust and vermin proof, front operated, floor mounting, free-standing compartmentalized, modular type extensible on both side, Double front operated.

4.0 OUR CLIENT- A COMBINATION OF SATISFACTION

4.1 OUR VALUED COSTMERS

<i>Sr.No:</i>	<i>Name of the Party</i>	<i>Address</i>
1.	TEXTILE INDUSTRIES:	
1.	Reliance Industries Ltd.	Ahmedabad
2.	Thakor Engineering Corporation	Ahmedabad
3.	Thakor Expert	Ahmedabad
4.	A.K.Steel Industries	Ahmedabad
5.	Microtex India Ltd.	Bangalore
6.	M.H. Mill & Industries Ltd.	Ahmedabad
7.	Aarvee Denim & Export Pvt.Ltd.	Ahmedabad
8.	Shree Mahadeo Cotton Pvt.Ltd.	Rajasthan
9.	Piramid Industries	Ahmedabad
10.	Shahin Textile	Ahmedabad
11.	Shree Prakash Textile Pvt.Ltd.	Ahmedabad
12.	Pinco Textile	Ahmedabad
2.	PHARMACEUTICALS/ FOOD INDUSTRIES:	
1.	Ophthal Remedies	Ahmedabad
2.	Padmavati Ice & Cold Storage Pvt.Ltd.	Ahmedabad
3.	Mother Dairy	Ahmedabad
3.	CHEMICAL INDUSTRIES:	
1.	Santosh Fabricators	Ahmedabad
2.	Sachin Filtech Pvt. Ltd.	Ahmedabad
3.	Rachana Lab Chemical Industries	Patan(Gujarat)
4.	Bharat Color Chemical Industries	Ahmedabad
5.	Mecochem Industries	Ahmedabad
6.	Indian Ion Exchange.Pvt.Ltd.(Naroda)	Ahmedabad
7.	Water Ion Exchange	Ahmedabad
8.	Kiridyese & chemicals Ind.Ltd.	Ahmedabad

3.6 FABRICATION ACTIVITY

Except industrial type pedestal switchboards, we use sheet folded construction in our panels. Welding is also minimized by using fasteners (bolts and nuts). This also provides unitized constructions. Further, the panel boards are fabricated from CRCA sheet having following thickness.

Frames, Load bearing members & large doors	: 2.0mm/2.5mm
Partitions & small doors	: 1.6mm
Front, back & side coves.	: 2.0mm
Gland plate	: 2.5mm
Base Channel	: 75x6 mm

Gasket of good quality is to be used on all four sides of the door to avoid atmospheric effect & restrict dust & vermin. Our panel have concealed hinges.

Our Panels are dust and vermin proof, front operated, floor mounting, free-standing compartmentalized, modular type extensible on both side, Double front operated.

4.0 OUR CLIENT- A COMBINATION OF SATISFACTION

4.1 OUR VALUED COSTMERS

<i>Sr.No:</i>	<i>Name of the Party</i>	<i>Address</i>
1.	TEXTILE INDUSTRIES:	
1.	Reliance Industries Ltd.	Ahmedabad
2.	Thakor Engineering Corporation	Ahmedabad
3.	Thakor Expert	Ahmedabad
4.	A.K.Steel Industries	Ahmedabad
5.	Microtex India Ltd.	Bangalore
6.	M.H. Mill & Industries Ltd.	Ahmedabad
7.	Aarvee Denim & Export Pvt.Ltd.	Ahmedabad
8.	Shree Mahadeo Cotton Pvt.Ltd.	Rajasthan
9.	Piramid Industries	Ahmedabad
10.	Shahin Textile	Ahmedabad
11.	Shree Prakash Textile Pvt.Ltd.	Ahmedabad
12.	Pinco Textile	Ahmedabad
2.	PHARMACEUTICALS/ FOOD INDUSTRIES:	
1.	Ophthal Remedies	Ahmedabad
2.	Padmavati Ice & Cold Storage Pvt.Ltd.	Ahmedabad
3.	Mother Dairy	Ahmedabad
3.	CHEMICAL INDUSTRIES:	
1.	Santosh Fabricators	Ahmedabad
2.	Sachin Filtech Pvt. Ltd.	Ahmedabad
3.	Rachana Lab Chemical Industries	Patan(Gujarat)
4.	Bharat Color Chemical Industries	Ahmedabad
5.	Mecochem Industries	Ahmedabad
6.	Indian Ion Exchange.Pvt.Ltd.(Naroda)	Ahmedabad
7.	Water Ion Exchange	Ahmedabad
8.	Kiridyese & chemicals Ind.Ltd.	Ahmedabad

4. TELECOM INDUSTRIES:

1. Kalyani Fibre Pvt.Ltd.	Surat (Gujarat)
2. Shivam India Plasto Pack	Ahmedabad
3. Kwaliti Tubes Industries	Surat (Gujarat)
4. Jindal Texofab Pvt.Ltd.	Ahmedabad
5. Control India	Ahmedabad
6. Maize Product	Ahmedabad
7. Shree Rang Ashish Industries	Ahmedabad
8. Mistry Fabricators	Ahmedabad
9. Satyam Industries	Ahmedabad

5. MULTIPLEX/ COMMERCIAL MALLS/ HOSPITALS/ HOTELS:

1. Emmor Foundry	Ahmedabad
2. Swastik Industries	Ahmedabad
3. Madhusudan Rolling Mill Ltd.	Ahmedabad
4. Alco Backs Pvt.Ltd.	Jodhpur (Rajasthan)
5. Sabarmati Paper Mill Pvt. Ltd.	Mehsana(Gujarat)
6. Shree Pack Well Industries	Vasad(Gujarat)
7. Padmawati Cold Storage	Ahmedabad(Gujarat)

6. ENGINEERING COMPANIES/ TURN KEY CONTRACTS:

1. Power Build Limited	V.V.Nagar (Gujarat)
2. Elecon Engineering Co.Ltd.	V.V.Nagar (Gujarat)
3. GMM Pfaudler Ltd.	Karamsad (Gujarat)
4. Larsen & Turbo Ltd. [ECC]	Gujarat
5. Larsen & Turbo Ltd. [ECC]	Rajasthan
6. Impress Engineers	Ahmedabad
7. HY-TUF Steel Pvt.Ltd.	Vadodara (Gujarat)
8. Siddharth Road Equipment	Mehsana (Gujarat)
9. Shree Maruti Enterprise	Ahmedabad
10. S.B. Corporation	Ahmedabad
11. Amrita Engineering Co.	Vitthal Udhayognagar
12. Paras Electricals	Vadodara (Gujarat)
13. Abi Fab Pvt.Ltd.	Hariyana
14. Deep Industries Ltd.	Gandhinagar
15. The Anup Engineering Ltd.	Ahmedabad
16. Thermax Ltd	Pune

7. HVAC CUSTOMERS

01. Patels Airtemp (India) Pvt.Ltd	Ahmedabad
02. Sterling Wilson	Baroda

5. PRODUCT RANGE

5.1 MCC PANEL (MOTOR CONTROL CENTRE)

- ❖ Duly wired with ACB/MCCB/SFU/DOL/STAR-DELTA/ATS Starters. Various designs provided like single/double front, fixed type, with marshaling terminations.
- ❖ Cubicle type extensible on each side.
- ❖ Require Control voltage facilities with control.
- ❖ All starters are provided with type 2 co-ordination where required.
- ❖ Separate busbar chamber for vertical droppers.
- ❖ Can be operating by remote on/off.

5.2 PCC PANEL (POWER CONTROL CENTRE)

- ❖ Main LT Panel, PCC With single, Multiple incomer, bus couplers with proper interlocking,
- ❖ Required protection, fault indications, interlocking is provided.
- ❖ Various designs are offered in PCC like top, Middle, Bottom Horizontal bus chamber, panel with aluminum/copper bus bars, top/bottom/front/rear cable termination, combinations of APFC Part with PCC.
- ❖ Required facilities like DG Incomer with AMF Functions, Cut-off of non-essential feeders at the event of failure of mains power.
- ❖ Panel with provision to connect bus duct at main incomer side.

5.3 ATS PANEL (AUTO TRANSFORMER STARTER)

- ❖ Highly Rated Transformers and contactor.
- ❖ The entire motor protection/safety device included.
- ❖ Double door /cubical type duly epoxy powder coated.
- ❖ Used for Heavy HP/Rating Motors.



MCC PANEL



PCC PANEL



ATS PANEL

5.4 APFC PANEL:

- ❖ APFC Panel with Microprocessor based relay for controlling power factor within required values.
- ❖ RTPFC Panels using Thyristor based capacitor switching.
- ❖ Fully ventilation type panel
- ❖ Easy Maintenance and easy to removable capacitor
- ❖ Used of capacitive duty contactors
- ❖ Always maintain 0.99PF.
- ❖ High-speed power factor correction.
- ❖ Provision of detuned reactors the panels for reliable operation in presence of harmonics.

5.5 BUS DUCTS

- ❖ Bus Duct with required rating, Fault Level.
- ❖ Designing of Bus Duct to achieve required Fault Level, considering temp. Rise, Thermal Rating, Stress, withstand capacity and all applicable derating factors.
- ❖ Bus Duct up to 4000A With Copper/Aluminum Busbar
- ❖ Busbar Supported on DMC/SMC Support
- ❖ Busbar with Heat Shrinkable Sleeve.
- ❖ Indoor/Out door Duty, Separate adapter at both end With Space heater & earth Bus.

5.6 D.G. SET CONTROL PANEL BOARDS

- ❖ We manufacturer and exporter of an advanced range of Electrical Control panel boards which increased centralized control & maximized safety for both the manufacturing process equipment and the workers.
- ❖ Their extensive research based designs also help us to address the most challenging power process control needs and ensuring optimum protection to the Diesel Generator Set.
- ❖ We offer electrical control panel boards, which are designed and manufactured for suitable operations. Some of the features are: *Good voltage system *Excellent wire distribution system *Short circuit withstand capacity *High degree protection
- ❖ Automatic Generator Start/Stop
- ❖ Silent Feature
- ❖ Heavy Duty Contactors Relays,
- ❖ Microprocessor Based AMF Relay
- ❖ Free Floor Standing Compact Design.



APFCR PANEL



BUS DUCT



D.G. CONTROL PANEL

5.7 POWER DISTRIBUTION PANEL

- ❖ Easy Distribution of Power Between Three Phase & Neutral
- ❖ Heavy Rating Copper/Aluminium Busbar
- ❖ Sufficient Air Space and wide Cable Alley
- ❖ Fully Isolated Phases
- ❖ We Man manufacturer of the Power Distribution Boards, we both for high tension well as the low tension power distribution.
- ❖ We use high quality switches and changeovers for these boards. These Power Distribution boards are been made in accordance to the electrical board's regulations and the client's power requirement.
- ❖ These distribution boards are used to house items such as * Motor control centers * Metering equipments *Transformers *Batteries These power distribution boards not only save installation costs but also cost of equipment storage, handling and field testing, which is the standard solution for infrastructure measures in industry and buildings.

5.8 LIGHTING CONTROL PANEL

- ❖ Easy Time operating Switch with Power Contactor
- ❖ Compact Size with Requirement of mount on out door/in door site.
- ❖ Switching with Time Delay as actual adjustable Operation
- ❖ To Saving a Energy with Infrastructure

5.9 Drive/Automation Control System Panel

- ❖ We manufactures highly advanced Automation Control System based industrial We offer automation for plastic machines, which enhance the efficiency, productivity and precision of the machines.
- ❖ Providing effective utilization of various plastic machinery,
- ❖ we also provide customized solution to our range, automation panels with automation packages like : *Programmable logic controller *Human Machine Interface *AC/DC Drives * Servo systems *Various types of sensors etc

5.10 Feeder Pillar

- ❖ Duly wired with Only for Copper/Aluminium Busbar with Sleeve & Supporter,
- ❖ Various designs provided like single/double front, fixed type, with out door Applicable.
- ❖ Junction for Termination of various Distribution Circuit.
- ❖ Application of New Developed of Industries, Infrastructure for Temperately Arrangement of Power with Protected.



POWER DIST. BOARD



LIGHTING PANEL DRIVE/ AUTO. PANEL



6.0 MANAGEMENT

Servotech Control System have a core team of professionals from various disciplines like Information Technology and associate like experts from Civil Engineering, Electrical Engineering, Mechanical Engineering, Commerce & Management etc. with expertise and vast working experience in different departments of Central & State Govt. like PWD, Railways, Irrigation, Petrochemicals and Power Projects etc.



Day to day operations of the project is handled by a team of professionals. The present management team consists of the following key personalities:

Mr. H.D.Patel **Electrical Engineer**

- ❖ Founder partner of Fine Electricals established in the year 1994 and subsequently established associate companies “SERVOTECH CONTROL SYSTEM” in the year 1992 and MAA ELECTRICALS in the year 2003
- ❖ Worked with Cummins Engine Service Network in India.
- ❖ Established Services Spares Activity in the field of Various Electrical Industries and control panels from 1982 to 1985.
- ❖ Established Servotech Control System in 1992 Engaged in services, Erection and marketing of Power distribution activity.

Mr. G.R Patel **Masters of Commerce**

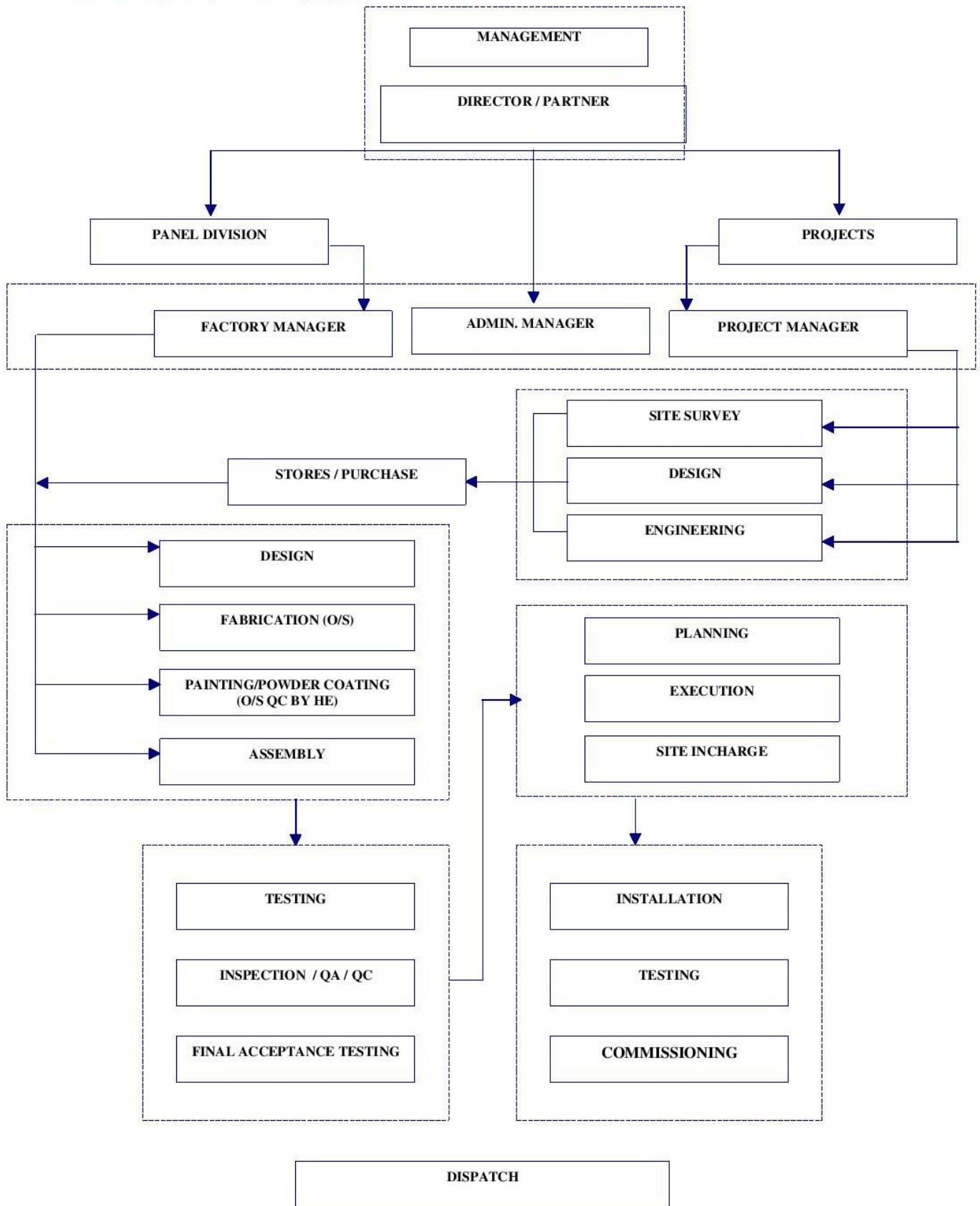
- ❖ Co-founder partner of Servotech Control System Engineers.
- ❖ Administration of Business Commerce
- ❖ Budget and Finance

7.0 OUR COMMITMENT:

QUALITY COMMITMENTS

“Servotech Control System” has a sound fiscal base, and has the financial resource to execute large contracts. The Management of the Establishment gives highest priority to Safety and Quality in all their efforts. With the effective coordination of our Supervisors in operations, we always achieved work satisfaction, which monitored closely and corrective action taken well before any activity reaches a “State Of Criticality

8. ORGANISATION DIAGRAM:-



7. QUALITY POLICY:

- At Servo Tech quality is a way of life right from design development production to delivery and after sales service.
- To achieve total customer satisfaction by providing products and services that meets or exceeds their expectations, in time at competitive prices in markets.
- This policy shall be implemented by a complete quality control system & strictly adhere to internal quality control standards.
- Achieving excellence by doing all tasks right at the first time.
- To build quality in operations to ensure zero defect products, services & they're by to achieve excellence in organizational performance.