

# **ANTENNA**



## **PATCH PANEL ANTENNA**

Gain- 9dBi

Frequency- 698-2700 Mhz



## **PATCH PANEL ANTENNA**

Gain- 12dBi

Frequency- 698-2700 Mhz



## **MIMO PATCH PANEL ANTENNA**

Gain- 9dBi

Frequency- 698-2700 Mhz



## **LPDA ANTENNA (Log Periodic Antenna)**

Gain- 9dBi

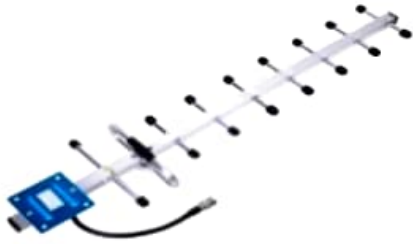
Frequency- 700-2700 Mhz



## **LPDA ANTENNA (Log Periodic Antenna)**

Gain- 12dBi

Frequency- 700-2700 Mhz



**YAGI ANTENNA**

Gain- 12dBi

Frequency- 698-2700 Mhz



**YAGI ANTENNA**

Gain- 18Dbi

Frequency- 700-2700 Mhz



**CEILING OMNI ANTENNA  
(DOME ANTENNA)**

Gain- 3/4dBi

Frequency- 698-2700 Mhz



**CEILING OMNI ANTENNA  
(DOME ANTENNA)**

Gain- 3/4dBi

Frequency- 698-2700 Mhz



**FLAT OMNI ANTENNA**

Gain- 2/3dBi

Frequency- 698-2700 Mhz



**OMNI DIRECTIONAL ANTENNA**

Gain- 12dBi

Frequency- 698-2700 Mhz



**GRID PARABOLIC ANTENNA**

Gain- 24dBi  
Frequency- 2.4 Ghz



**GRID PARABOLIC ANTENNA**

Gain- 29dBi  
Frequency- 5.8 Ghz



**MAGNETIC ANTENNA**

Gain- 3dBi  
Frequency- 800-2500 Mhz



**MAGNETIC ANTENNA**

Gain- 5dBi  
Frequency- 800-2500 Mhz



**GSM PCB ANTENNA**

Gain- 3dBi  
Frequency- 900-2000 Mhz



**GSM PCB STRIP ANTENNA**

Gain- 5dBi  
Frequency- 800-900 Mhz

**JMV INDIA**



**GSM RUBBER DUCK ANTENNA**

Gain- 2dBi

Frequency- 800-2500 Mhz



**GSM RUBBER DUCK ANTENNA**

Gain- 3dBi

Frequency- 800-2500 Mhz



**GSM RUBBER DUCK ANTENNA**

Gain- 5dBi

Frequency- 800-2500 Mhz



**GSM RUBBER DUCK ANTENNA**

Gain- 5dBi

Frequency 2.4Ghz - 5.8Ghz



**GPS ANTENNA**

Gain- 25dBi

Frequency- 1575.42 Mhz

# CONNECTOR



**N MALE CONNECTOR FOR LMR200/LMR300/LMR400  
(CRIMP TYPE)**



**N MALE CONNECTOR FOR LMR200/LMR300/LMR400  
(CLAMP TYPE)**



**N FEMALE CONNECTOR FOR LMR200/LMR300/LMR400  
(CRIMP TYPE)**



**N FEMALE CONNECTOR FOR LMR200/LMR300/LMR400  
(CLAMP TYPE)**



**SMA MALE CONNECTOR FOR LMR200/LMR300/LMR400**



**N (M) CONNECTOR FOR 1/2" FLEX AND SUPER FLEX CABLE (CLAMP)**



**N (M) RIGHT ANGLE CONNECTOR (CLAMP)**



**N (M) RIGHT ANGLE CONNECTOR (CRIMP)**



**N (M)- (F)- (F)**



**(F)- (F)- (F)**



**N (M)- N (F)- N (F)**

**T ADAPTER**



**JOINTER**

**SMA (M) to SMA (F)**

**SMA (M) to SMA (M)**

**N (F) to SMA (M)**



**N (F) to N (F)**



**RP SMA (M) to SMA (F)**



**COUPLER**



**SPLITTER**



**Y TYPE CABLE SMA (M)- SMA (F)- SMA (F)**



**10 PAIR KRONE MODULE**

# **CO-AXIAL CABLE**



**HLF200 CABLE**



**HLF300 CABLE**



**HLF400 CABLE**



**1/2" FLEXIBLE CABLE**



**1/2" SUPE FLEXIBLE CABLE**



**RG6 CABLE**



**RG58 CABLE**



**RG316 CABLE**



**3+1 CCTV CABLE**



**4+1 CCTV CABLE**





**LINE CORD LANDLINE TELEPHONE WIRE**



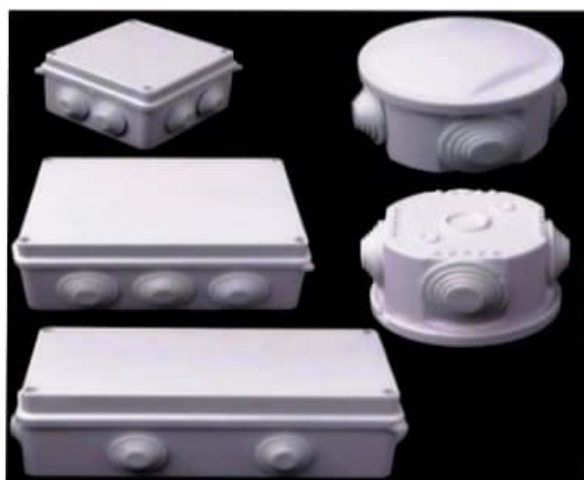
**COIL CORD LANDLINE TELEPHONE WIRE**



**CAT5 NETWORKING CABLE**



**CAT6 NETWORKING CABLE**



**PVC JUNCTION BOX**